

V&V Reference Report

L2 ASCDS Version : 8.4.5

Observation 11001 - L2 Version 2
Chandra X-Ray Center

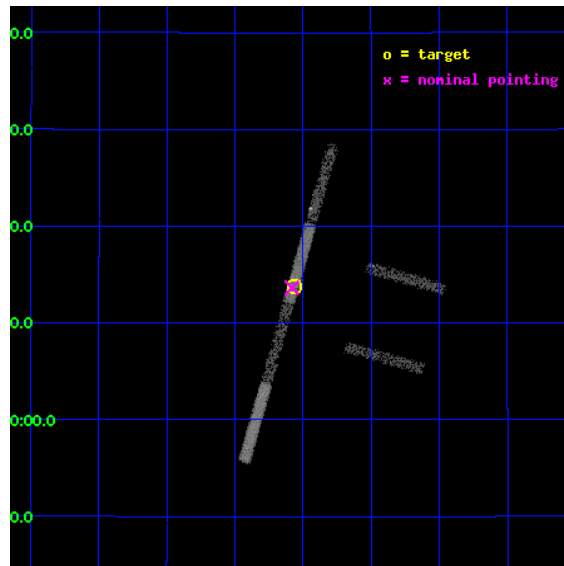
L2 Processing Date : Jun 18 2012

Contents

1	Front	2
2	OBI	3
2.1	OBI	3
2.1.1	Images	3
2.1.2	Bias	3
2.1.3	Parameters	4
2.1.4	Events	4
2.2	Compared Parameters	5
2.3	Aspect	6
2.4	Star Slots	9
2.4.1	Slot 3	9
2.4.2	Slot 4	10
2.4.3	Slot 5	11
2.4.4	Slot 6	12
2.4.5	Slot 7	13
2.5	FID Slots	14
2.5.1	Slot 0	14
2.5.2	Slot 1	15
2.5.3	Slot 2	16
A	Summary	17
A.1	Status	17
A.2	Comments	17

1 Front

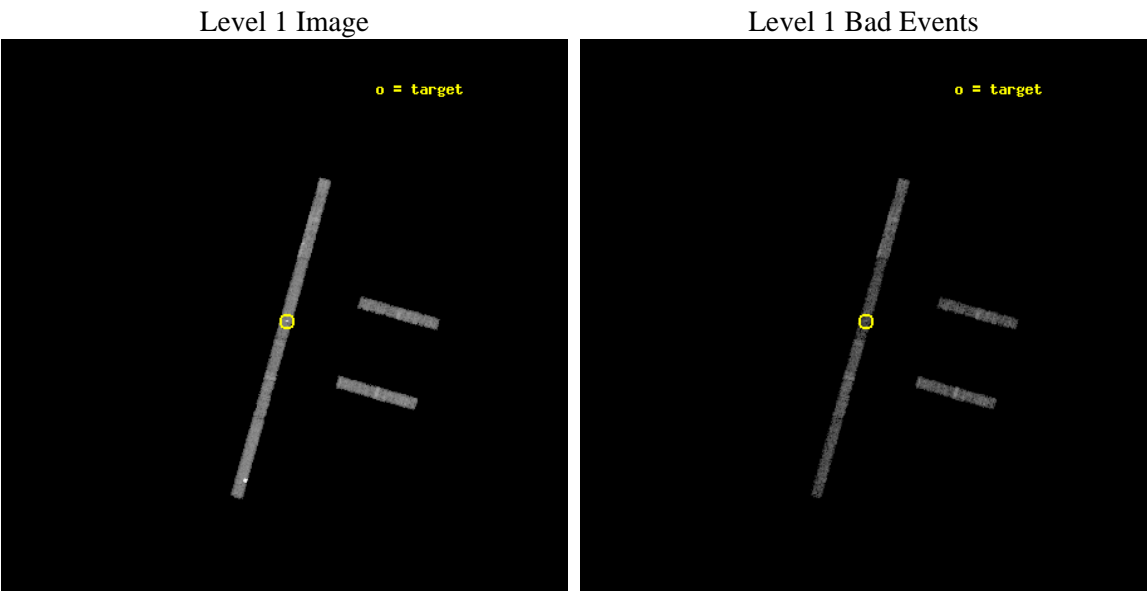
seq_num	200632	Sequence number
obs_id	11001	Observation id
title	NeII as a Tracer for X-Rays in Disks Around T Tauri Stars	Proposal
observer	Prof. Manuel Guedel	Principal investigator
object	UX Tau A	Source name
dtcycle	0	
cycle	P	events from which exps? Prim/Second/Both
ra_targ	67.516667	Observer's specified target RA [deg]
dec_targ	18.230389	Observer's specified target Dec [deg]
ra_nom	67.520434486238	Nominal RA [deg]
dec_nom	18.227208044427	Nominal Dec [deg]
roll_nom	285.79410547016	Nominal Roll [deg]
revision	2	Processing version of data
ontime	5365.4999085665	Sum of GTIs [s]
livetime	5068.349800276	Livetime [s]
ontime2	5364.7588685751	Sum of GTIs [s]
ontime3	5365.3778045774	Sum of GTIs [s]
ontime5	5365.459884584	Sum of GTIs [s]
ontime6	5365.4188445807	Sum of GTIs [s]
ontime7	5365.4999085665	Sum of GTIs [s]
ontime8	5365.3367645741	Sum of GTIs [s]
l2events	12848	Number of level 2 events



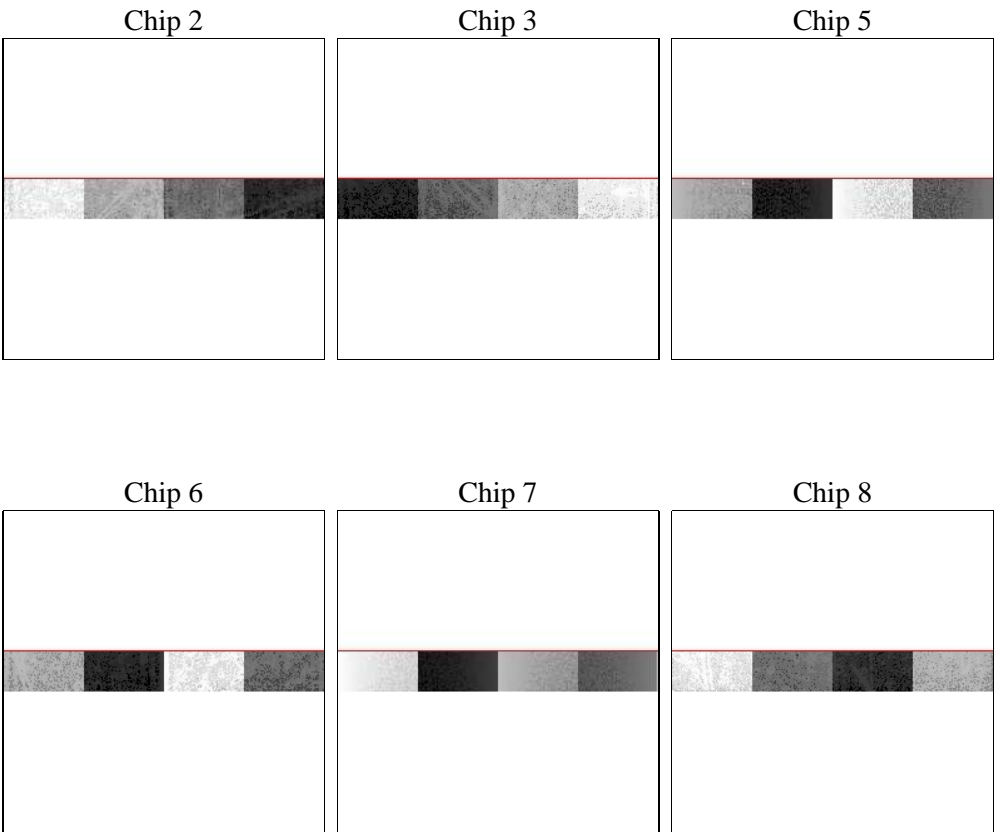
2 OBI

2.1 OBI

2.1.1 Images



2.1.2 Bias



Chip 6



Chip 7



Chip 8



2.1.3 Parameters

obi_num	0	Obi number	sched_exp_time	5300.000000	[s] Scheduled observation exposure time
ascdsver	8.4.5	Processing system revision	ontime	5365.4999085665	Sum of GTIs [s]
caldsver	4.4.10	 	ontime2	5364.7588685751	Sum of GTIs [s]
date	2012-06-18T19:17:29	Date and time of file creation	ontime3	5365.3778045774	Sum of GTIs [s]
revision	2	Processing version of data	ontime5	5365.459884584	Sum of GTIs [s]
			ontime6	5365.4188445807	Sum of GTIs [s]
			ontime7	5365.4999085665	Sum of GTIs [s]
			ontime8	5365.3367645741	Sum of GTIs [s]
			l1events	60863	Number of level 1 events

2.1.4 Events

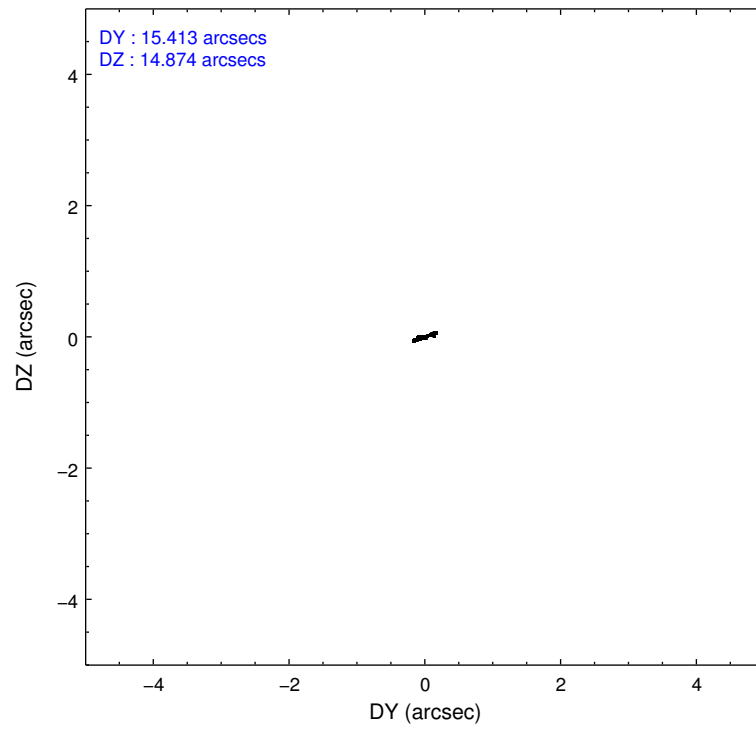
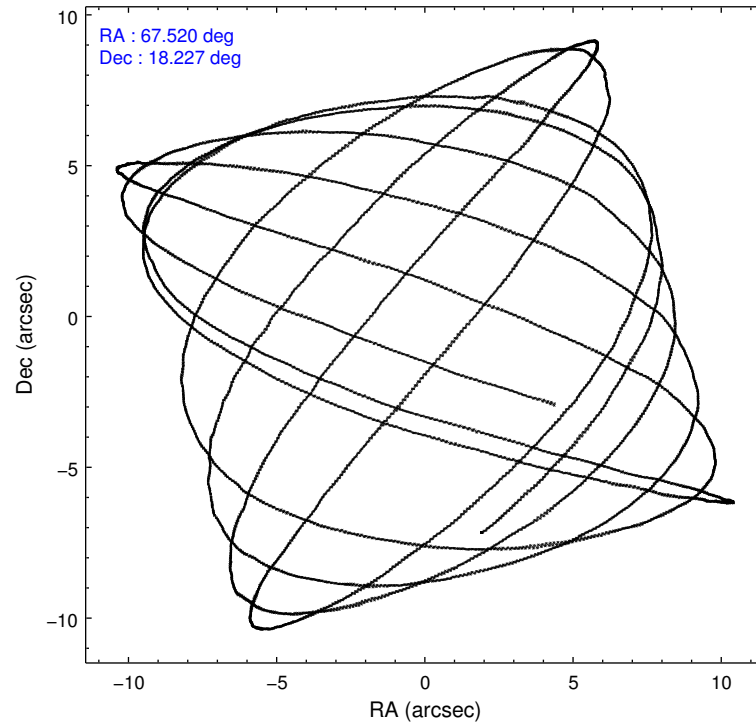
	ccd 2	ccd 3	ccd 5	ccd 6	ccd 7	ccd 8
level 1 events	8735	6967	16528	7769	9691	11173
rejected events	7893	6122	4677	6912	4238	8762
rejected %	90%	87%	28%	88%	43%	78%

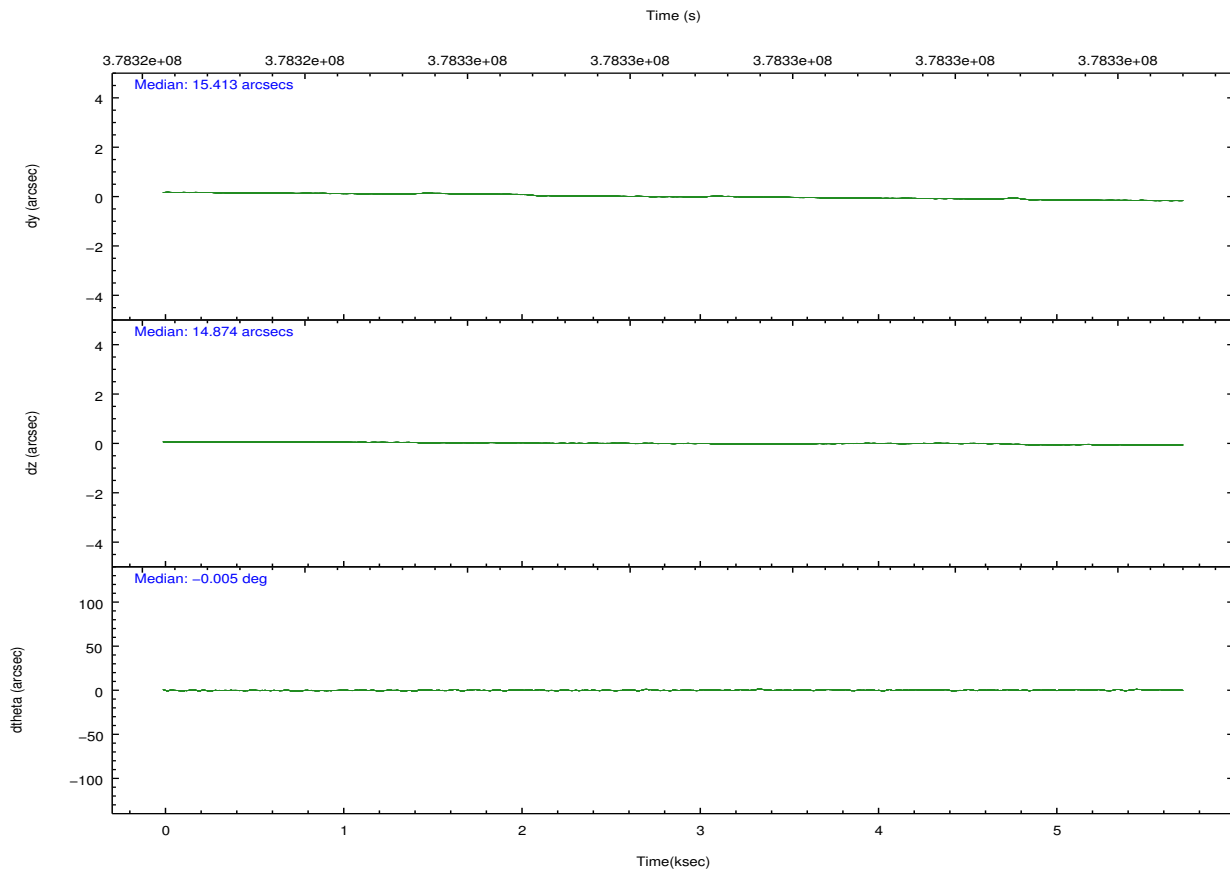
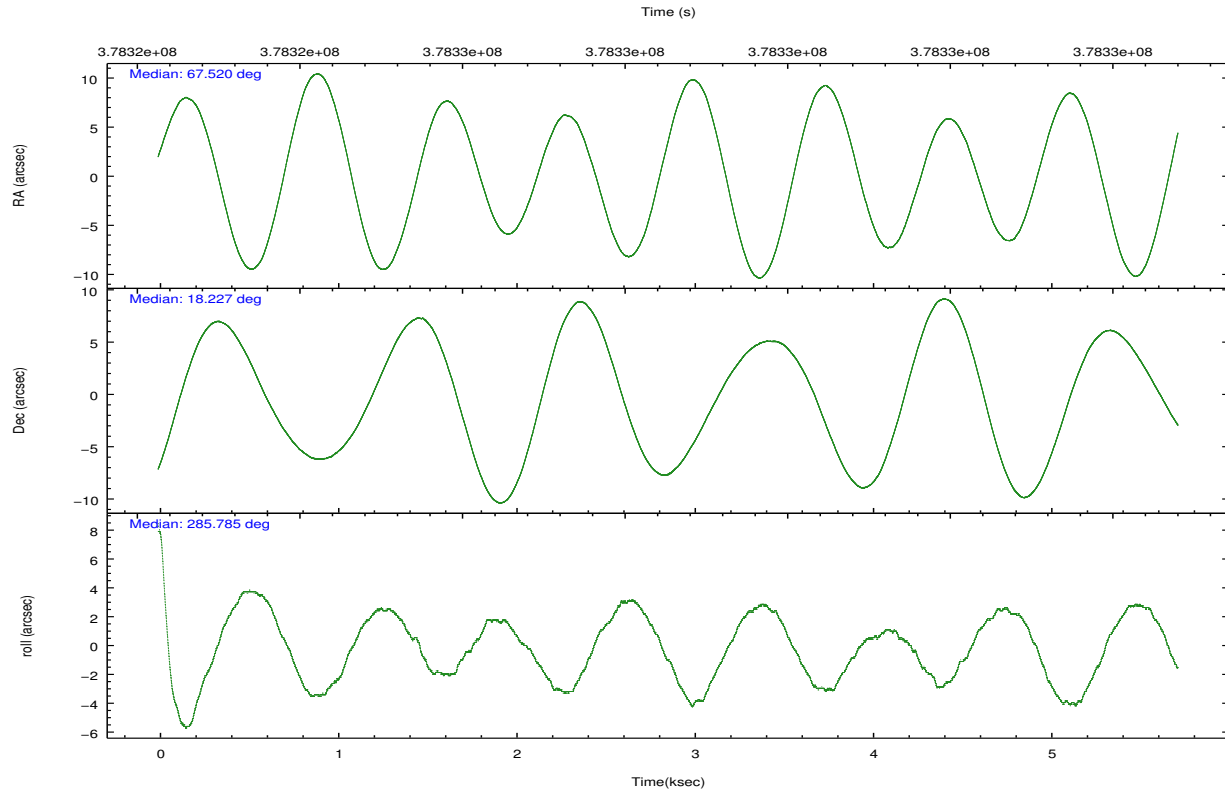
	ccd 2	ccd 3	ccd 5	ccd 6	ccd 7	ccd 8
grade 0 events	231	281	6280	229	892	646
	2%	4%	37%	2%	9%	5%
grade 1 events	5	6	75	3	16	7
	0%	0%	0%	0%	0%	0%
grade 2 events	164	146	2404	187	1224	513
	1%	2%	14%	2%	12%	4%
grade 3 events	147	144	297	141	689	293
	1%	2%	1%	1%	7%	2%
grade 4 events	153	130	523	154	627	257
	1%	1%	3%	1%	6%	2%
grade 5 events	285	265	848	265	863	396
	3%	3%	5%	3%	8%	3%
grade 6 events	147	144	2350	147	2025	702
	1%	2%	14%	1%	20%	6%
grade 7 events	7603	5851	3751	6643	3355	8359
	87%	83%	22%	85%	34%	74%

2.2 Compared Parameters

Parameter	Planned	Actual	Parameter	Planned	Actual
Instrument	ACIS	ACIS	Obspar format version number	7	7
Detector	ACIS-235678	ACIS-235678	Obspar file type	PREDICTED	ACTUAL
Grating	NONE	NONE	Obspar update status	NONE	UPDATED
Data mode	VFAINT	VFAINT	CCD I0 on	N	N
Observation mode	POINTING	POINTING	CCD I1 on	N	N
[deg] Pointing RA	67.499518	67.52043448623844	CCD I2 on	O1	Y
[deg] Pointing Dec	18.245910	18.22720804442675	CCD I3 on	O2	Y
[deg] Pointing Roll	285.644022	285.7941054701578	CCD S0 on	N	N
[mm] SIM focus pos	-0.684267	-0.6828225247311905	CCD S1 on	Y	Y
[mm] SIM defocus	0	0.001444936568705701	CCD S2 on	Y	Y
[mm] SIM translation stage pos	-190.132523	-190.1400660498719	CCD S3 on	Y	Y
[mm] SIM translation stage offset	0	0.00754346686406393	CCD S4 on	Y	Y
[s] Observation start time (MET)	378324824.184000	378323966.28063	CCD S5 on	N	N
Observation start date	2009-12-27T18:12:38	2009-12-27T17:59:26	Number of optional ACIS chips dropped	0	0
[s] Observation end time (MET)	378330124.184000	378330875.29348	On-chip summing requested	N	N
Observation end date	2009-12-27T19:40:58	2009-12-27T19:54:35	Subarray requested	CUSTOM	1/8
Read mode	TIMED	TIMED	Subarray start row	449	449
			Subarray row count	128	128
			Alternating exposures requested	N	N
			[s] Primary exposure time	0.000000	0.7

2.3 Aspect



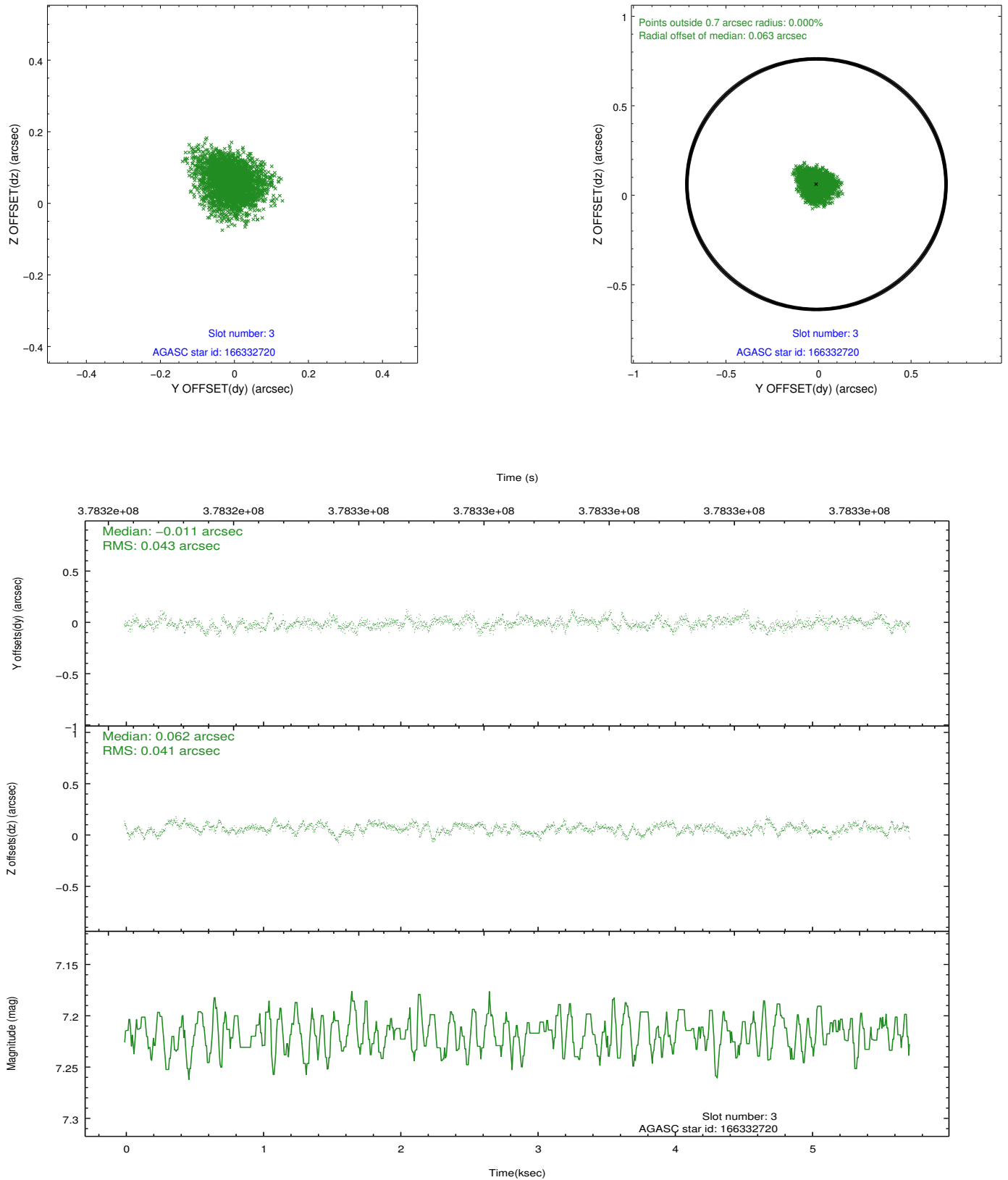


Slot Statistics

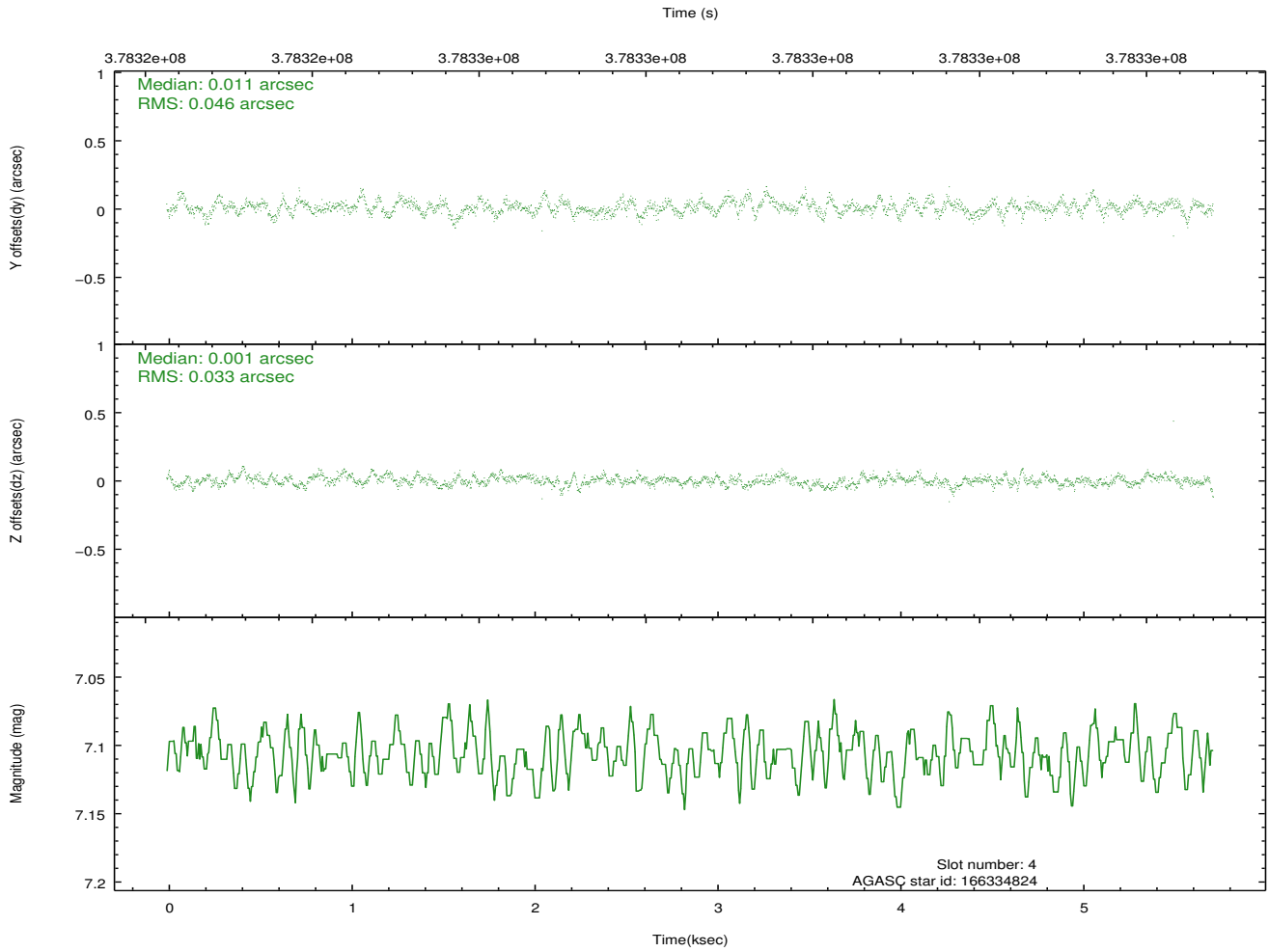
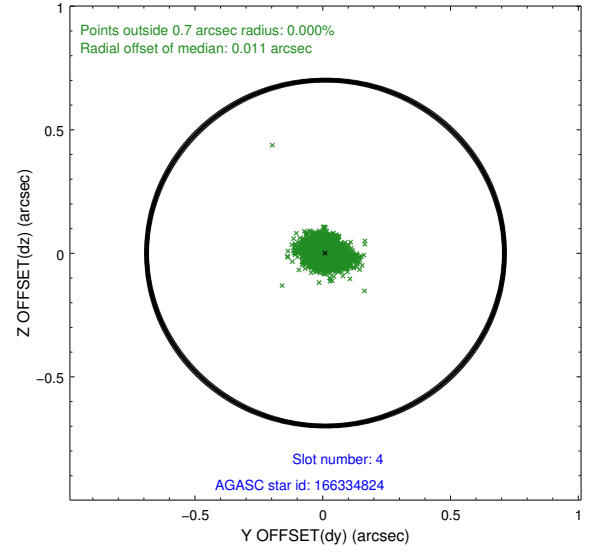
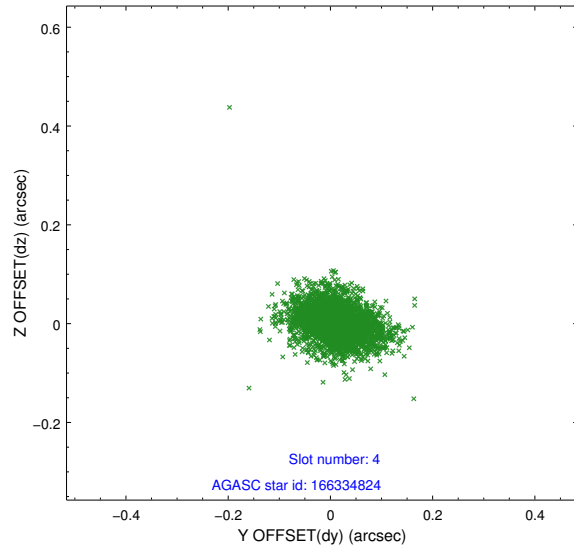
slot	status	id	mag	n_pts	med_dy	med_dz	dr1	dr2	ra	dec	mean_y	mean_z
0	FID	ACIS-S-2	6.96	1396	-0.111	-0.049	0.012	0.019	0.000000	0.000000	-768.49	-1736.31
1	FID	ACIS-S-4	7.05	1396	0.234	0.067	0.014	0.023	0.000000	0.000000	2144.63	171.24
2	FID	ACIS-S-5	7.08	1396	-0.152	-0.009	0.014	0.022	0.000000	0.000000	-1820.06	165.97
3	GUIDE	166332720	7.22	2792	-0.011	0.062	0.064	0.105	67.335629	17.544937	2279.48	-1220.93
4	GUIDE	166334824	7.11	2792	0.011	0.001	0.059	0.098	67.376458	17.863163	1215.17	-776.95
5	GUIDE	166337576	8.95	2785	-0.029	0.022	0.084	0.136	66.934197	17.739411	1231.73	-2357.65
6	GUIDE	166468240	9.05	2789	0.035	-0.050	0.078	0.125	68.167699	17.861525	1946.92	1831.99
7	GUIDE	166996584	9.14	2786	-0.006	-0.033	0.089	0.145	68.020035	18.861675	-1658.03	2306.38

2.4 Star Slots

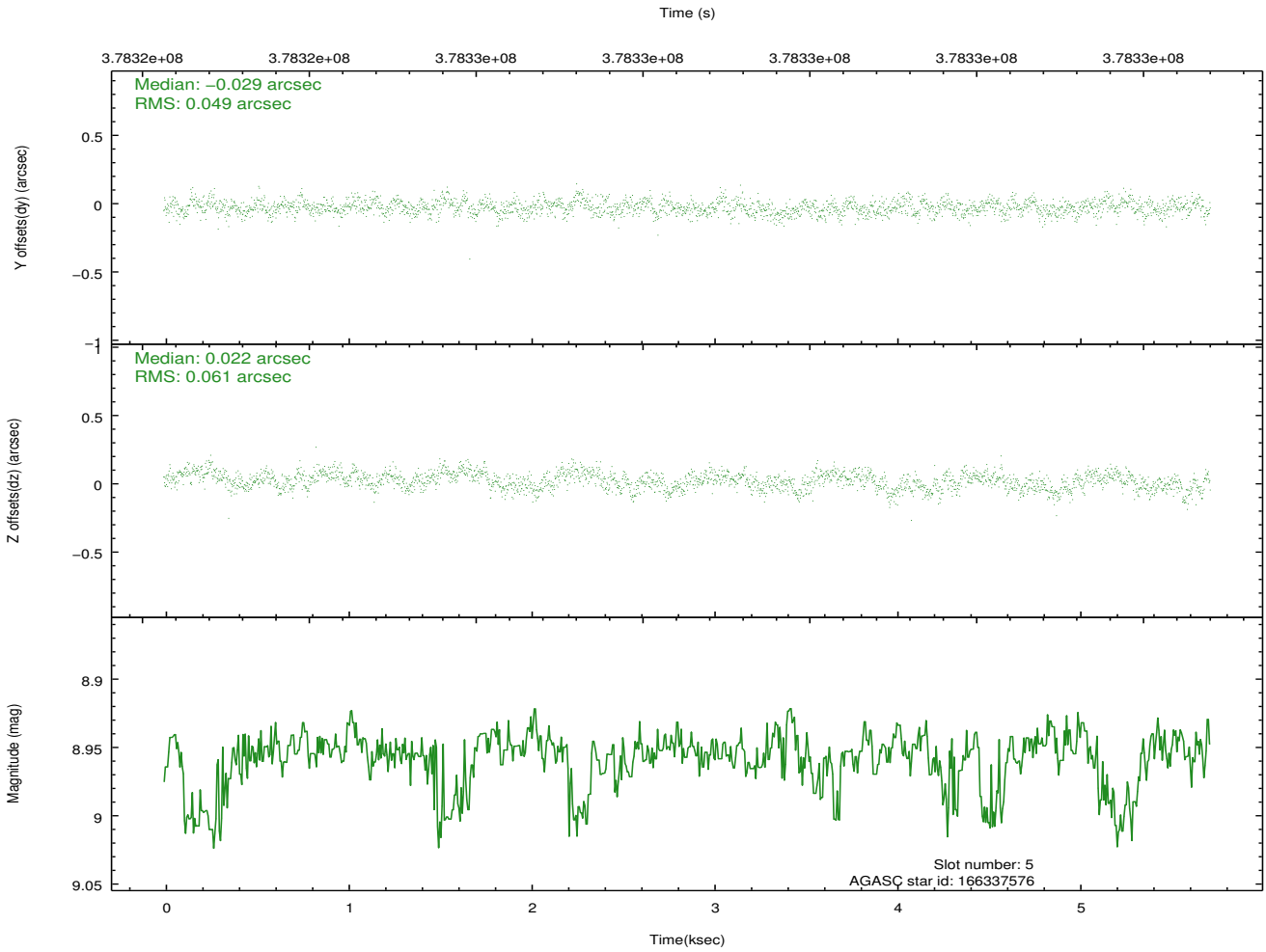
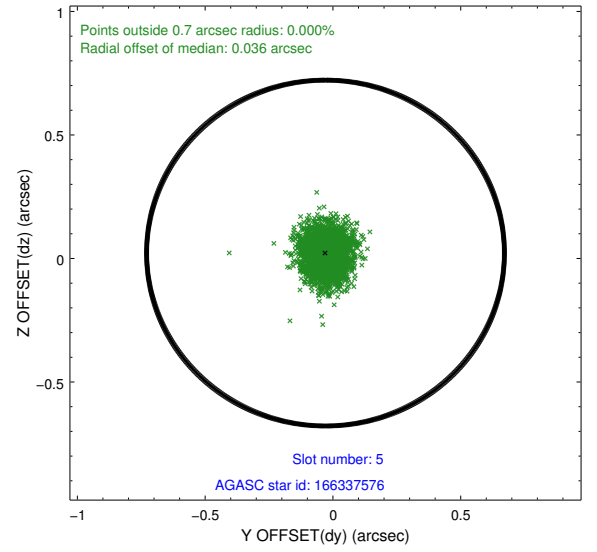
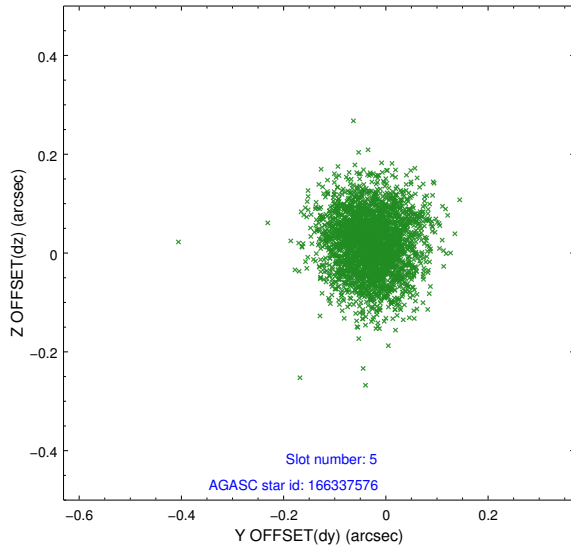
2.4.1 Slot 3



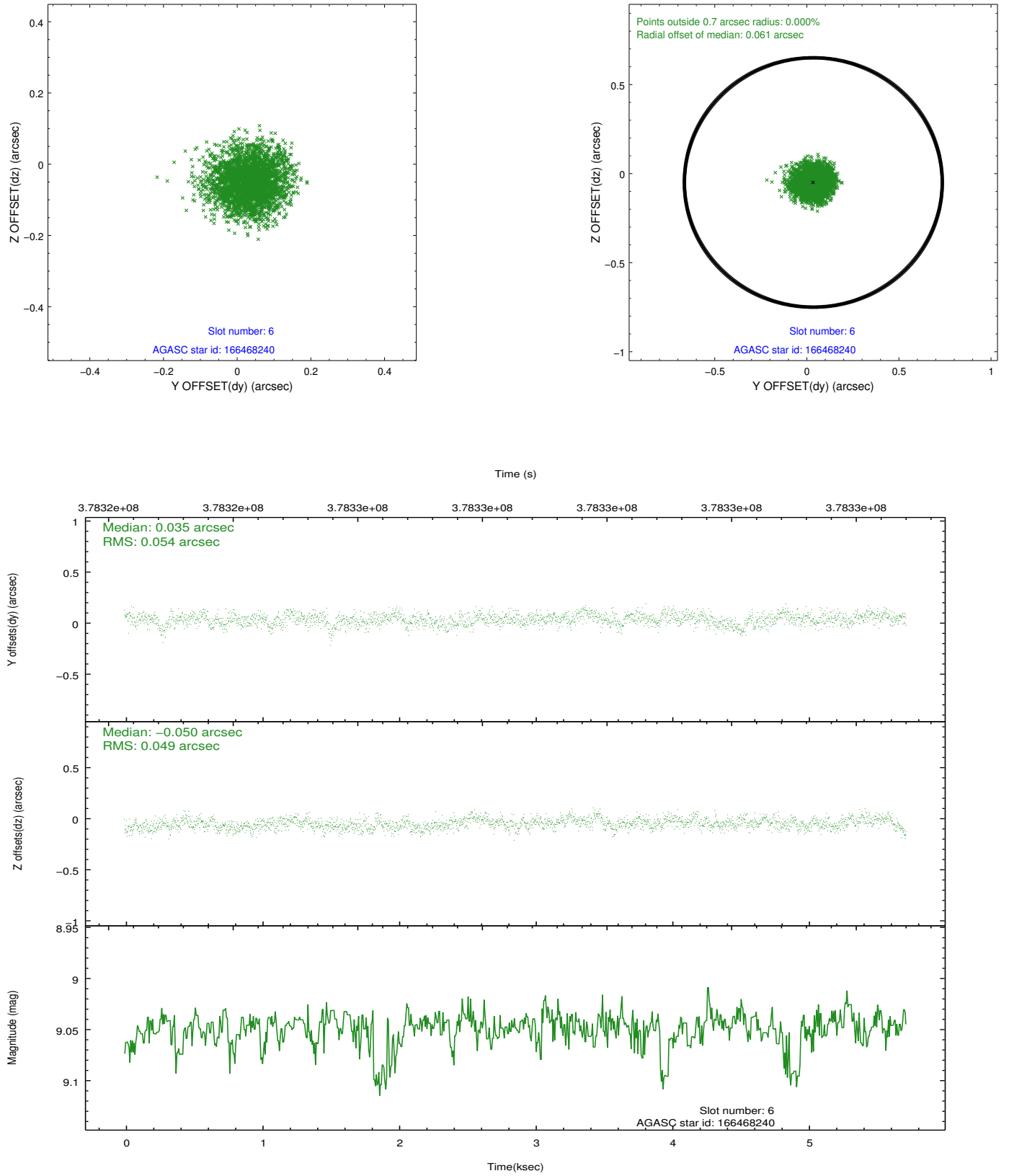
2.4.2 Slot 4



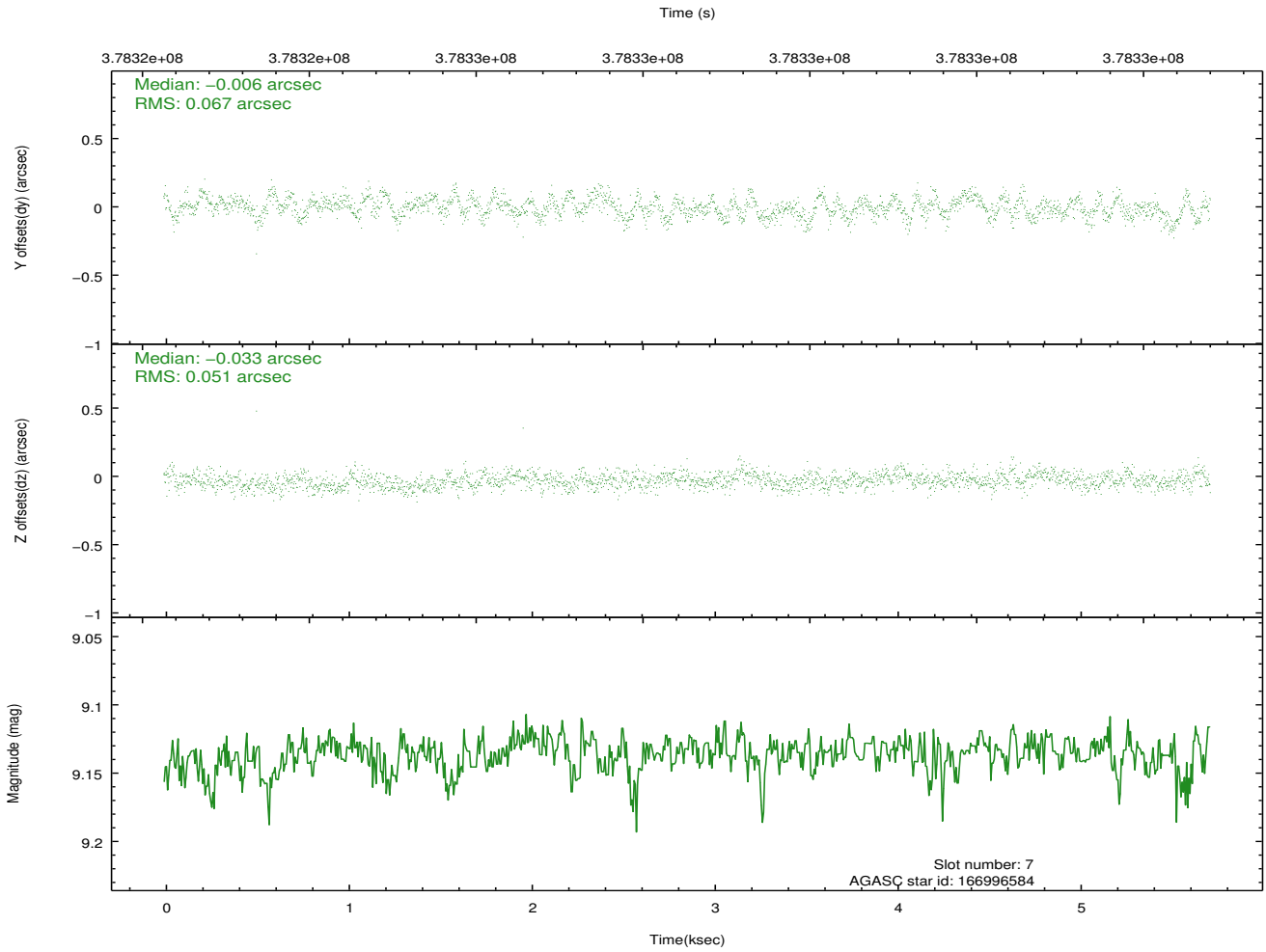
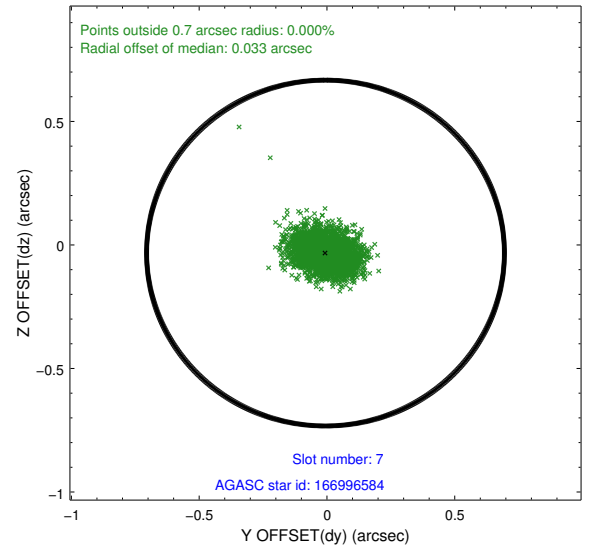
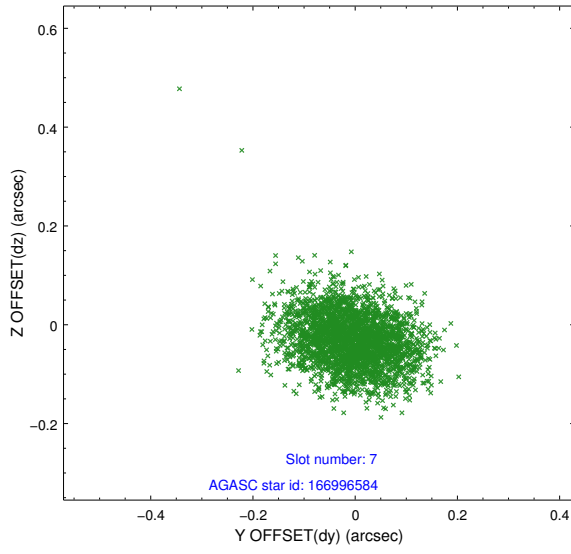
2.4.3 Slot 5



2.4.4 Slot 6

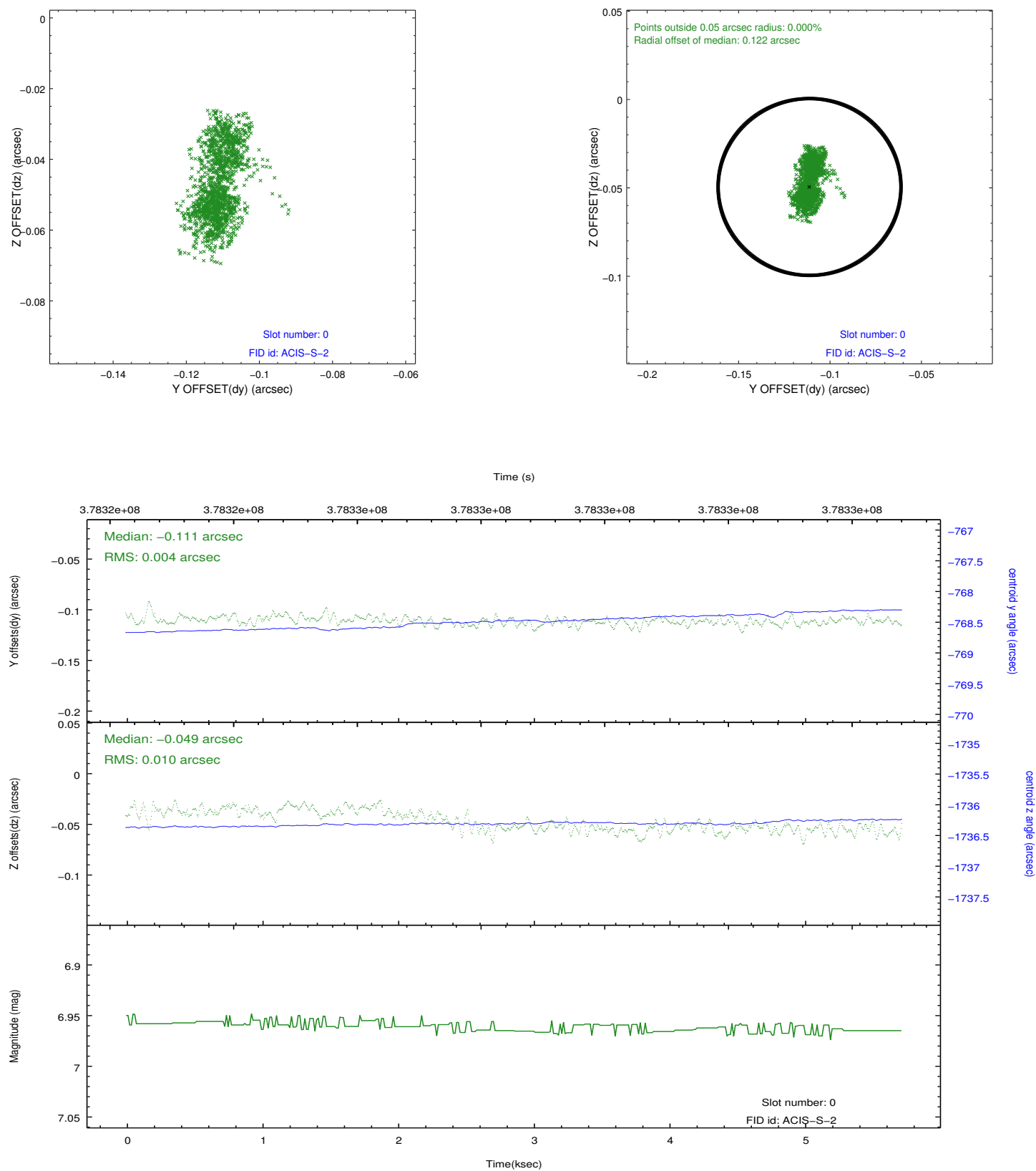


2.4.5 Slot 7

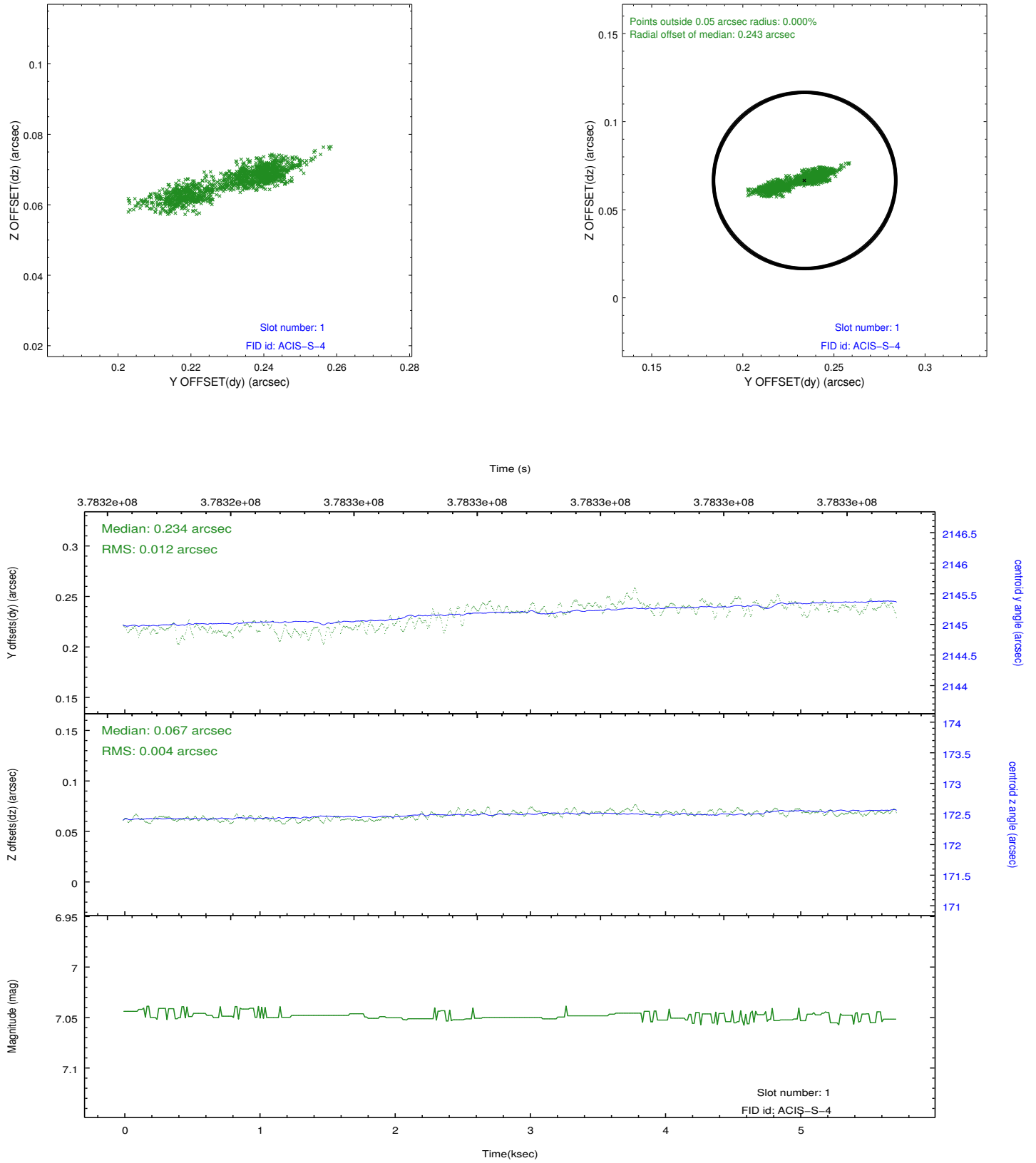


2.5 FID Slots

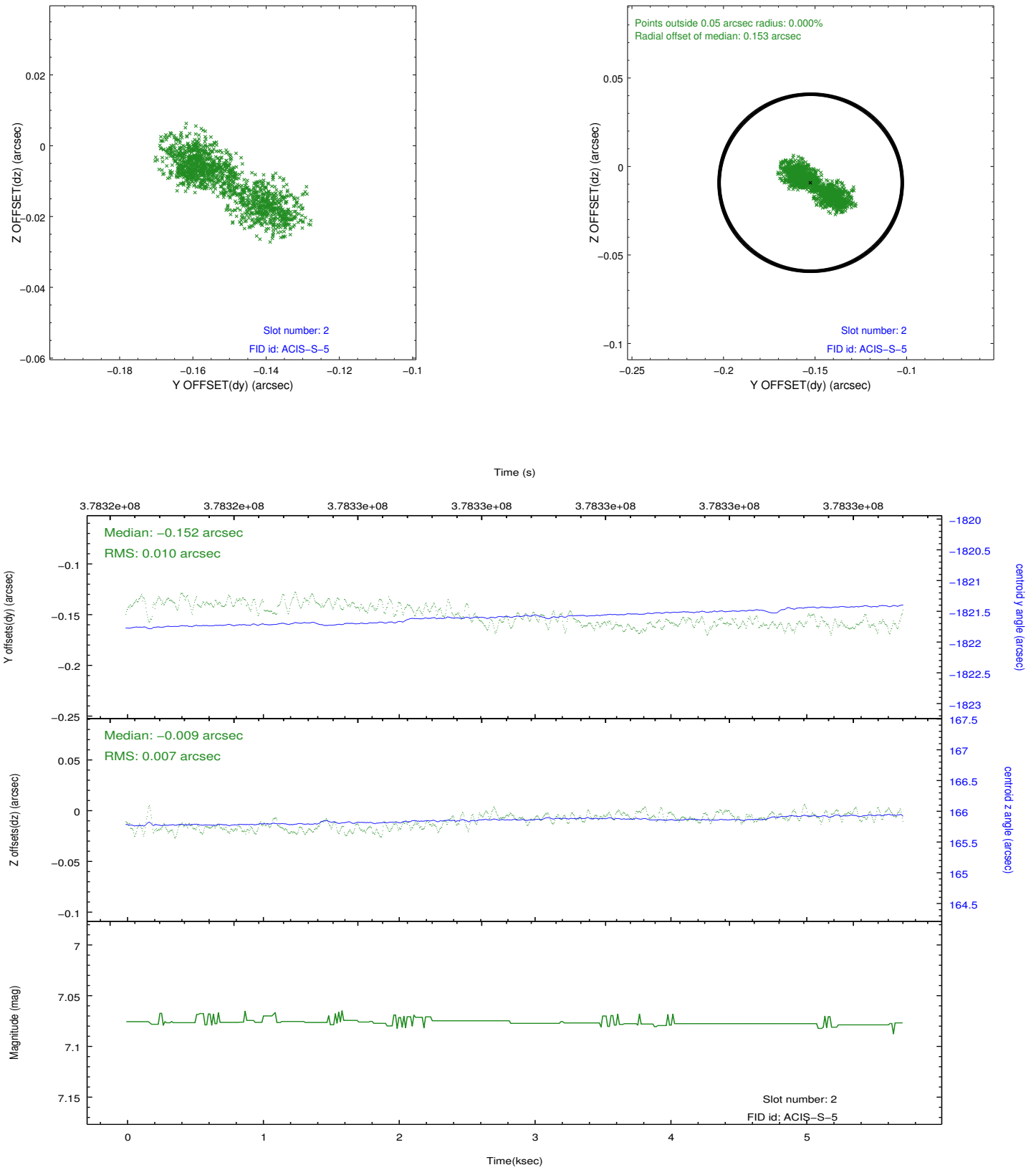
2.5.1 Slot 0



2.5.2 Slot 1



2.5.3 Slot 2



A Summary

A.1 Status

V&V Scientist	Beth Sundheim
V&V Date (YYYY-MM-DD)	2012.06.22
V&V Edition	1
V&V Disposition and Status	OK
V&V Charge Time	5.3654999085665

A.2 Comments