

V&V Reference Report

L2 ASCDS Version : 8.4.4

Observation 10891 - L2 Version 2
Chandra X-Ray Center

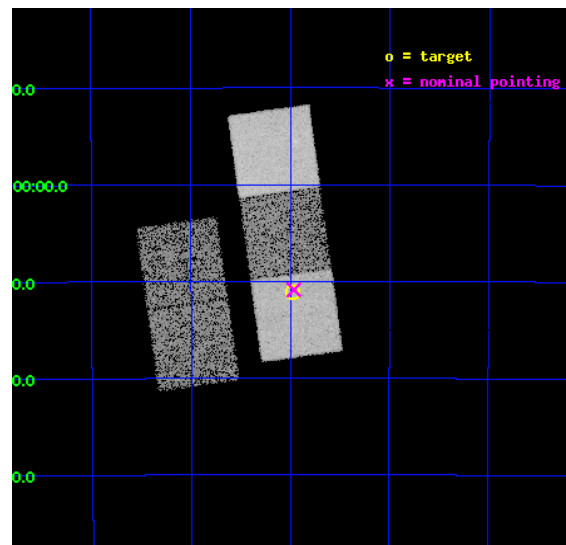
L2 Processing Date : Jun 3 2012

Contents

1	Front	2
2	OBI	3
2.1	OBI	3
2.1.1	Images	3
2.1.2	Bias	3
2.1.3	Parameters	4
2.1.4	Events	4
2.2	Compared Parameters	5
2.3	Aspect	6
2.4	Star Slots	9
2.4.1	Slot 3	9
2.4.2	Slot 4	10
2.4.3	Slot 5	11
2.4.4	Slot 6	12
2.4.5	Slot 7	13
2.5	FID Slots	14
2.5.1	Slot 0	14
2.5.2	Slot 1	15
2.5.3	Slot 2	16
A	Summary	17
A.1	Status	17
A.2	Comments	17

1 Front

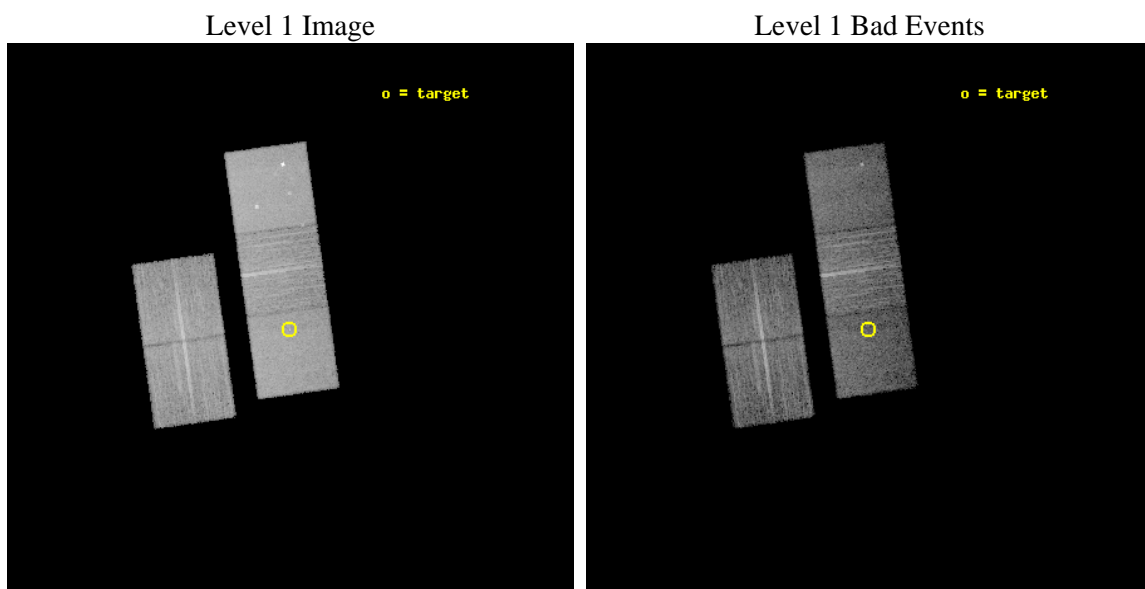
seq_num	401028	Sequence number
obs_id	10891	Observation id
title	The cooling neutron star in the super-Eddington accretor XTE J1701-462	Proposal title
observer	Dr Jeroen Homan	Principal investigator
object	XTE J1701-462	Source name
dtcycle	0	
cycle	P	events from which exps? Prim/Second/Both
ra_targ	255.24375	Observer's specified target RA [deg]
dec_targ	-46.185722	Observer's specified target Dec [deg]
ra_nom	255.24091560313	Nominal RA [deg]
dec_nom	-46.181257198097	Nominal Dec [deg]
roll_nom	82.054564666459	Nominal Roll [deg]
revision	2	Processing version of data
ontime	9138.8000702858	Sum of GTIs [s]
livetime	9019.3949194808	Livetime [s]
ontime2	9135.6590698957	Sum of GTIs [s]
ontime3	9138.8000702858	Sum of GTIs [s]
ontime5	9138.8000702858	Sum of GTIs [s]
ontime6	9138.8000702858	Sum of GTIs [s]
ontime7	9138.8000702858	Sum of GTIs [s]
l2events	111358	Number of level 2 events



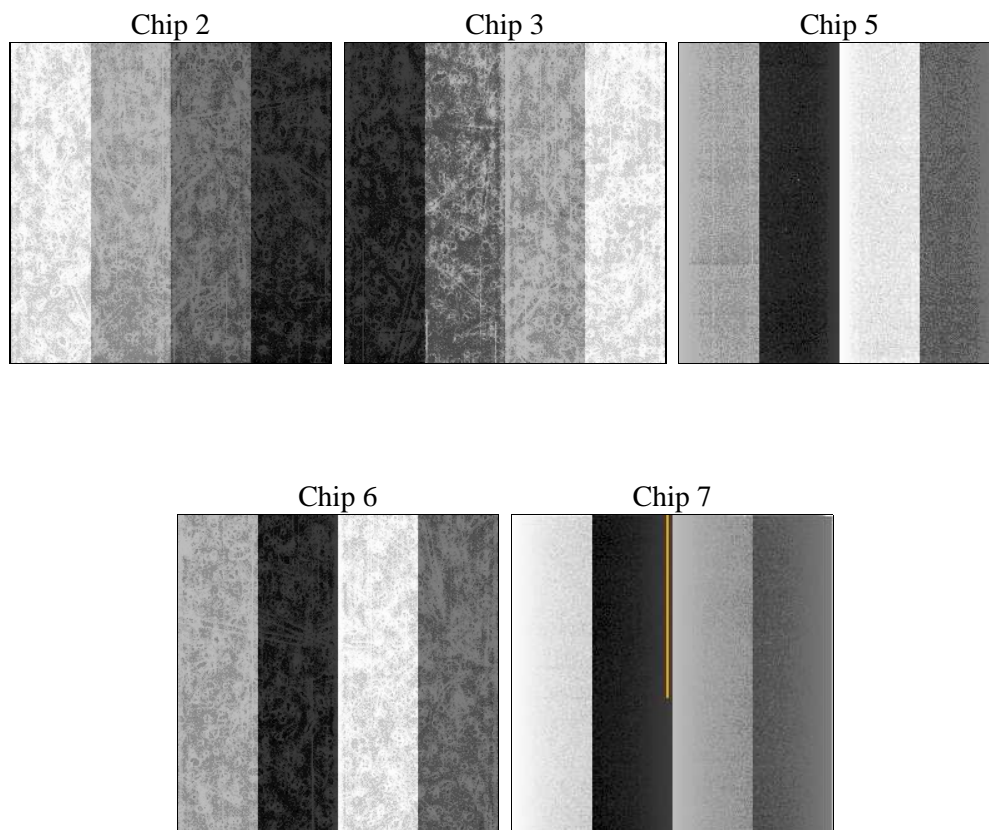
2 OBI

2.1 OBI

2.1.1 Images



2.1.2 Bias



2.1.3 Parameters

obi_num	0	Obi number	sched_exp_time	9000.000000	[s] Scheduled observation exposure time
ascdsver	8.4.4	Processing system revision	ontime	9138.8000702858	Sum of GTIs [s]
caldsver	4.4.9	 	ontime2	9135.6590698957	Sum of GTIs [s]
date	2012-06-03T05:52:39	Date and time of file creation	ontime3	9138.8000702858	Sum of GTIs [s]
revision	2	Processing version of data	ontime5	9138.8000702858	Sum of GTIs [s]
			ontime6	9138.8000702858	Sum of GTIs [s]
			ontime7	9138.8000702858	Sum of GTIs [s]
			l1events	460705	Number of level 1 events

2.1.4 Events

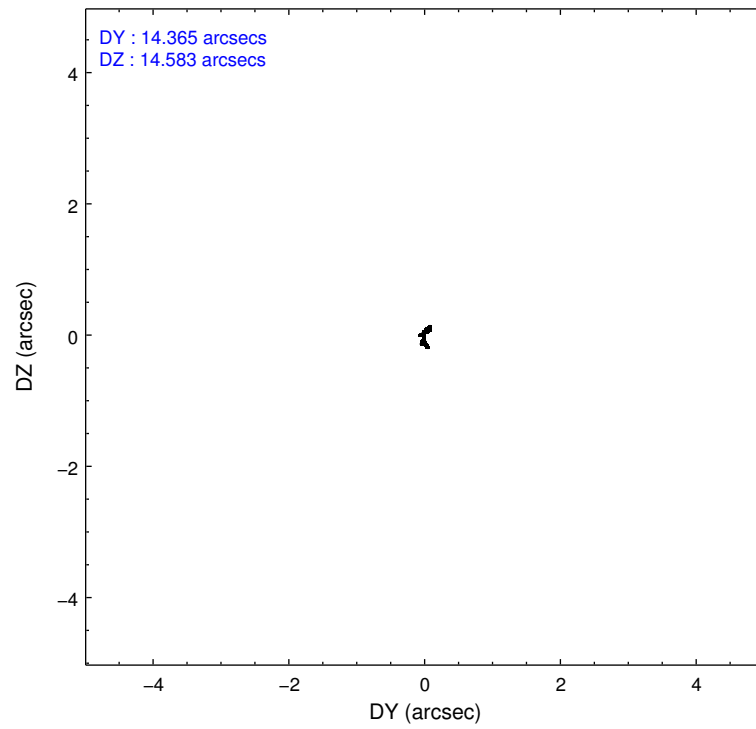
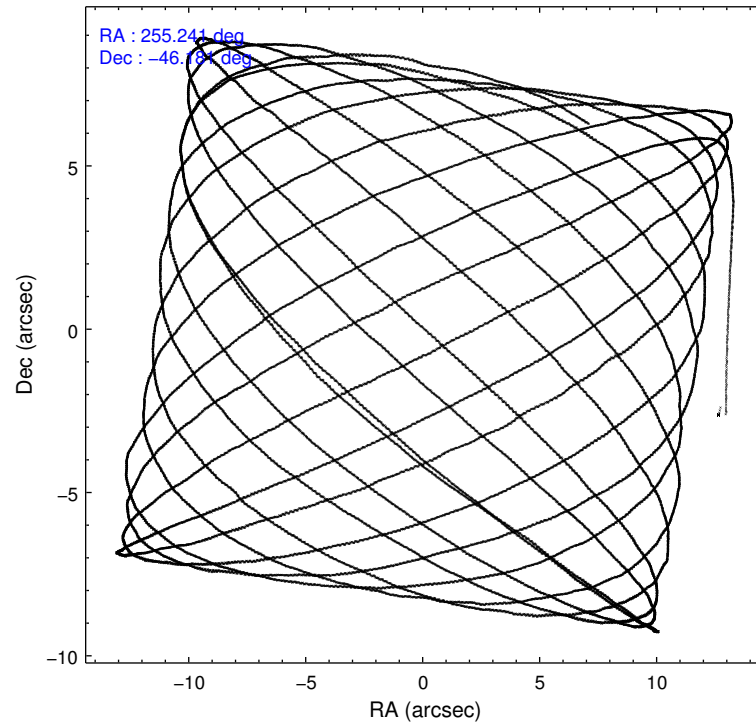
	ccd 2	ccd 3	ccd 5	ccd 6	ccd 7
level 1 events	81643	80293	119838	84321	94610
rejected events	73909	72902	63609	75798	53854
rejected %	90%	90%	53%	89%	56%

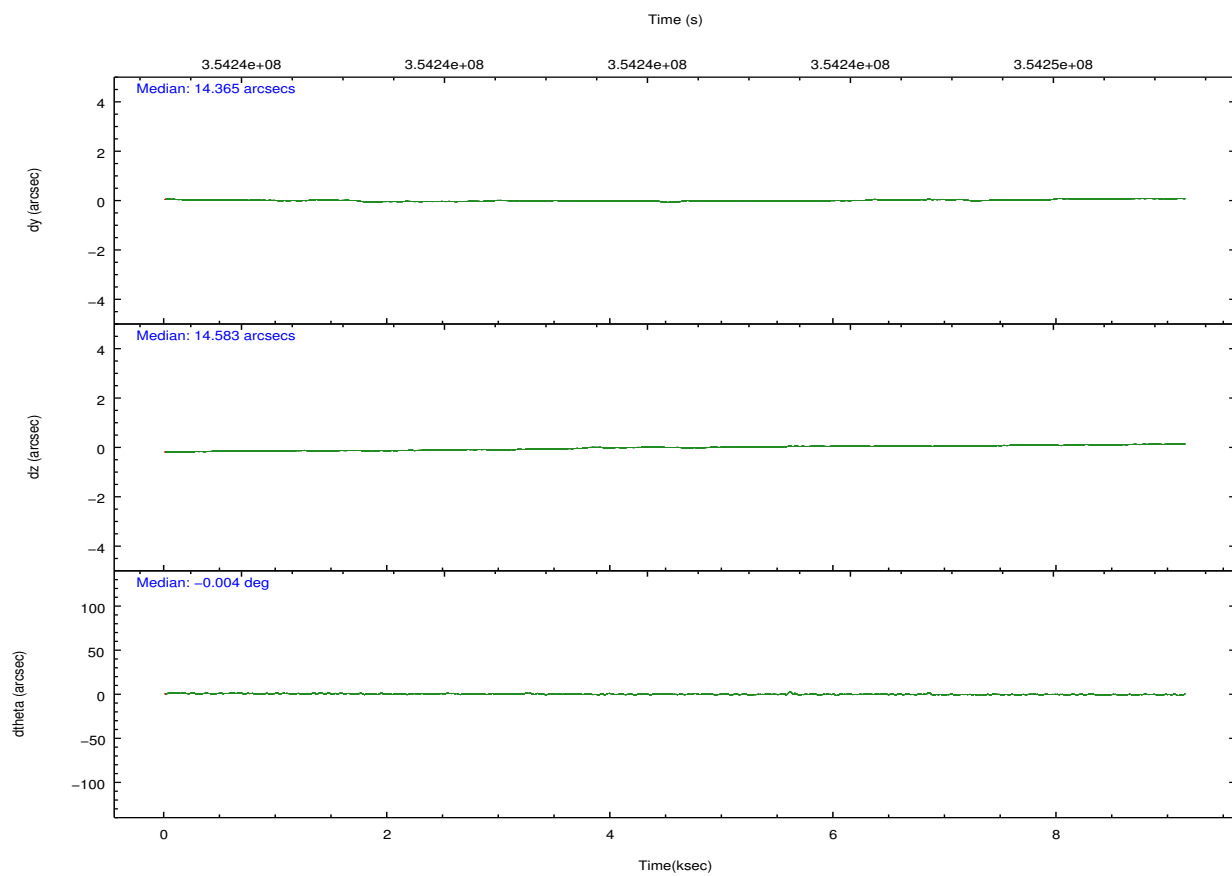
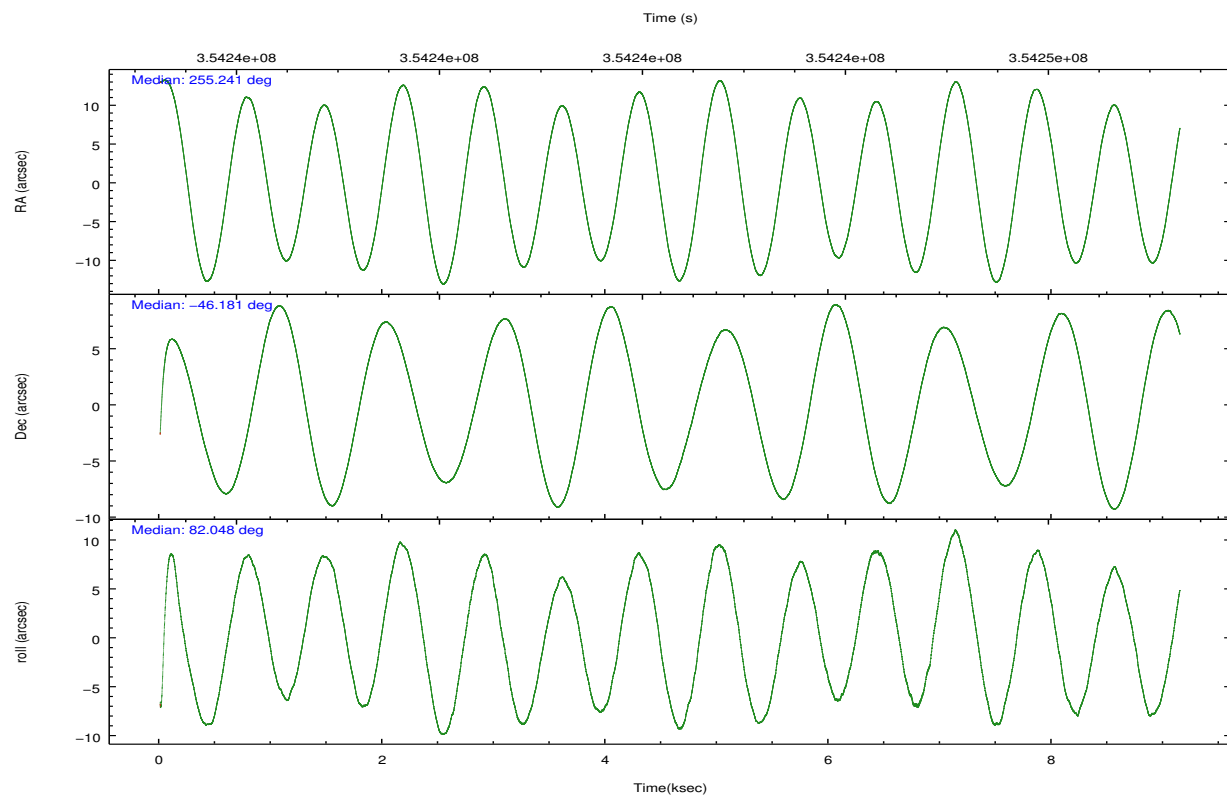
	ccd 2	ccd 3	ccd 5	ccd 6	ccd 7
grade 0 events	3030	2758	5861	3214	3962
	3%	3%	4%	3%	4%
grade 1 events	52	59	434	48	146
	0%	0%	0%	0%	0%
grade 2 events	1958	1710	18833	1986	8759
	2%	2%	15%	2%	9%
grade 3 events	908	917	2320	981	3945
	1%	1%	1%	1%	4%
grade 4 events	884	868	2207	956	3761
	1%	1%	1%	1%	3%
grade 5 events	2887	3354	9196	3377	9833
	3%	4%	7%	4%	10%
grade 6 events	1457	1617	30301	1940	22742
	1%	2%	25%	2%	24%
grade 7 events	70467	69010	50686	71819	41462
	86%	85%	42%	85%	43%

2.2 Compared Parameters

Parameter	Planned	Actual	Parameter	Planned	Actual
Instrument	ACIS	ACIS	Obspar format version number	7	7
Detector	ACIS-23567	ACIS-23567	Obspar file type	PREDICTED	ACTUAL
Grating	NONE	NONE	Obspar update status	NONE	UPDATED
Data mode	VFAINT	VFAINT	Number of optional ACIS chips dropped	0	0
Observation mode	POINTING	POINTING	On-chip summing requested	N	N
[deg] Pointing RA	255.256255	255.2409156031338	Subarray requested	NONE	NONE
[deg] Pointing Dec	-46.206484	-46.18125719809673	Alternating exposures requested	N	N
[deg] Pointing Roll	81.909033	82.05456466645859	[s] Primary exposure time	0.000000	3.1
[s] Window start time (MET)	354196866.184000	354196866.184000			
[s] Window stop time (MET)	354801666.184000	354801666.184000			
[mm] SIM focus pos	-0.684267	-0.6828225247311905			
[mm] SIM defocus	0	0.001444936568705701			
[mm] SIM translation stage pos	-190.132523	-190.1425803651734			
[mm] SIM translation stage offset	0	0.01005778216563158			
[s] Observation start time (MET)	354237853.184000	354236598.32375			
Observation start date	2009-03-23T23:23:07	2009-03-23T23:03:18			
[s] Observation end time (MET)	354246853.184000	354247535.07429			
Observation end date	2009-03-24T01:53:07	2009-03-24T02:05:35			
Read mode	TIMED	TIMED			

2.3 Aspect



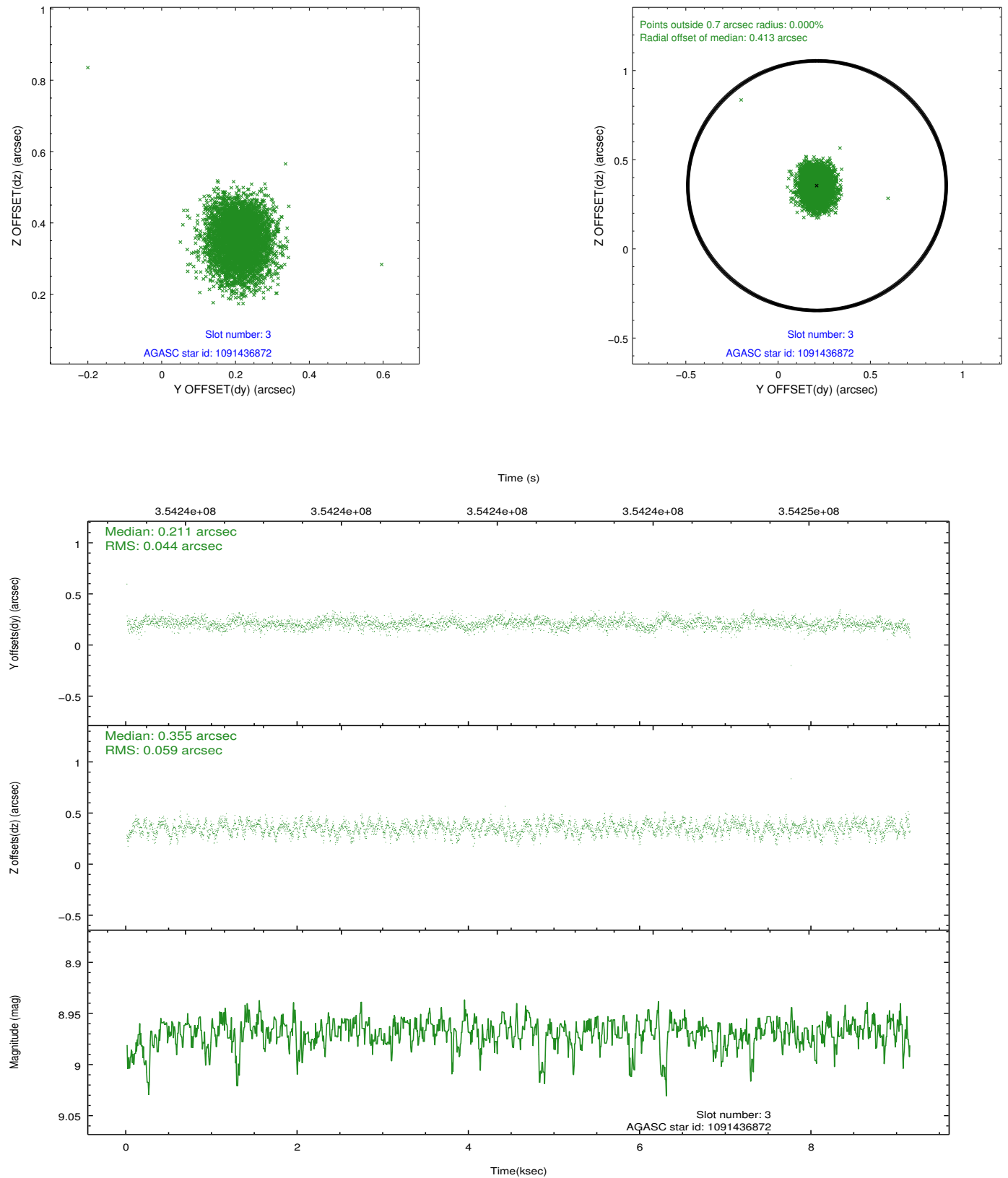


Slot Statistics

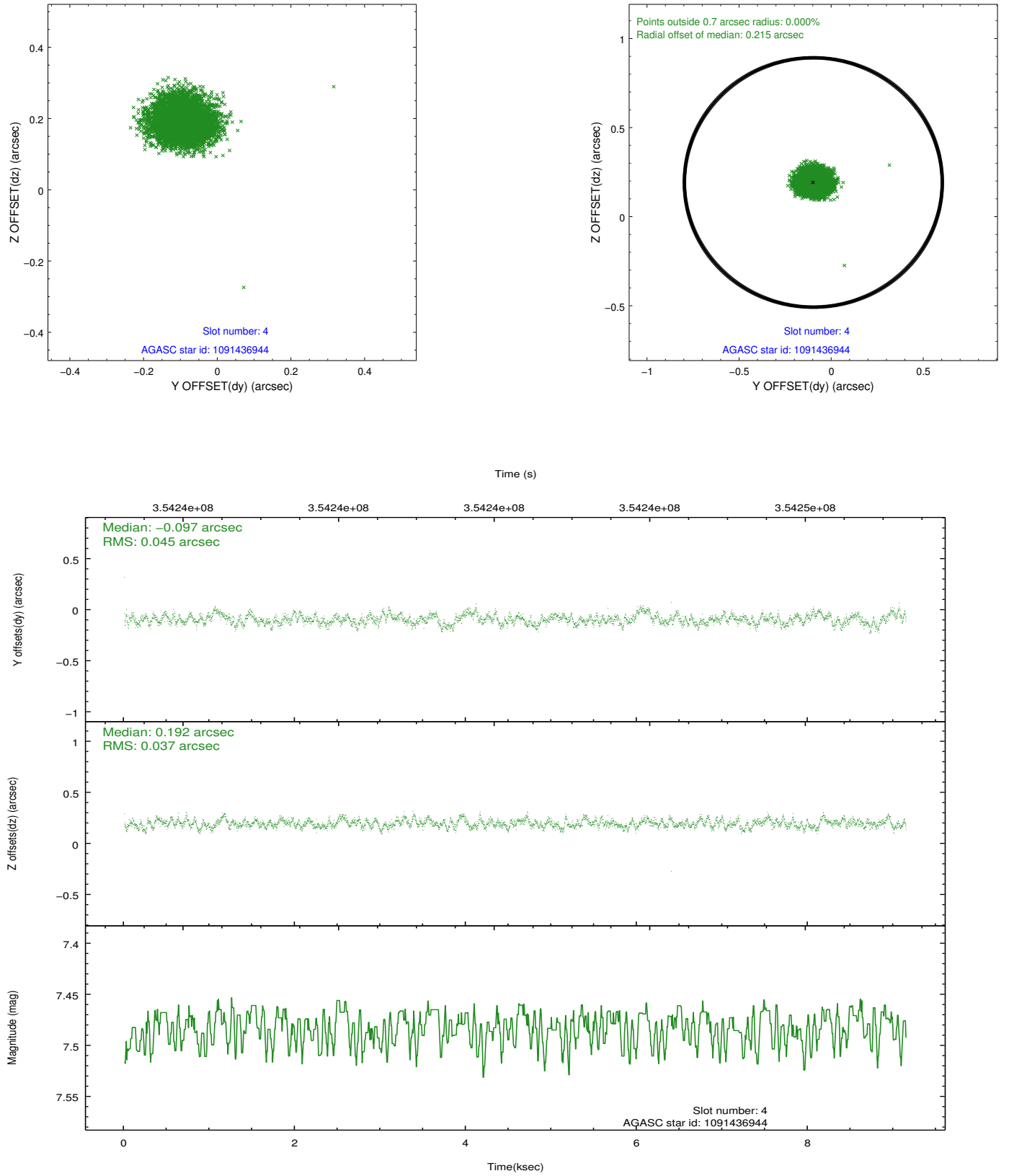
slot	status	id	mag	n_pts	med_dy	med_dz	dr1	dr2	ra	dec	mean_y	mean_z
0	FID	ACIS-S-2	6.95	2231	-0.077	-0.034	0.007	0.012	0.000000	0.000000	-767.39	-1735.92
1	FID	ACIS-S-4	7.03	2231	0.200	0.046	0.006	0.011	0.000000	0.000000	2145.88	172.04
2	FID	ACIS-S-5	7.05	2231	-0.154	-0.004	0.007	0.012	0.000000	0.000000	-1819.56	166.32
3	GUIDE	1091436872	8.97	4454	0.211	0.355	0.078	0.126	255.728542	-46.511740	-926.32	-1313.37
4	GUIDE	1091436944	7.48	4458	-0.097	0.192	0.062	0.098	255.747540	-46.187588	235.85	-1203.24
5	GUIDE	1091443112	7.91	4461	-0.206	-0.175	0.063	0.097	254.637652	-45.920353	795.57	1677.58
6	GUIDE	1091443144	8.22	4460	-0.196	-0.317	0.069	0.108	254.556494	-45.731344	1438.22	1980.84
7	GUIDE	1091440000	8.98	4454	0.291	-0.054	0.079	0.126	254.971678	-46.695128	-1841.11	448.13

2.4 Star Slots

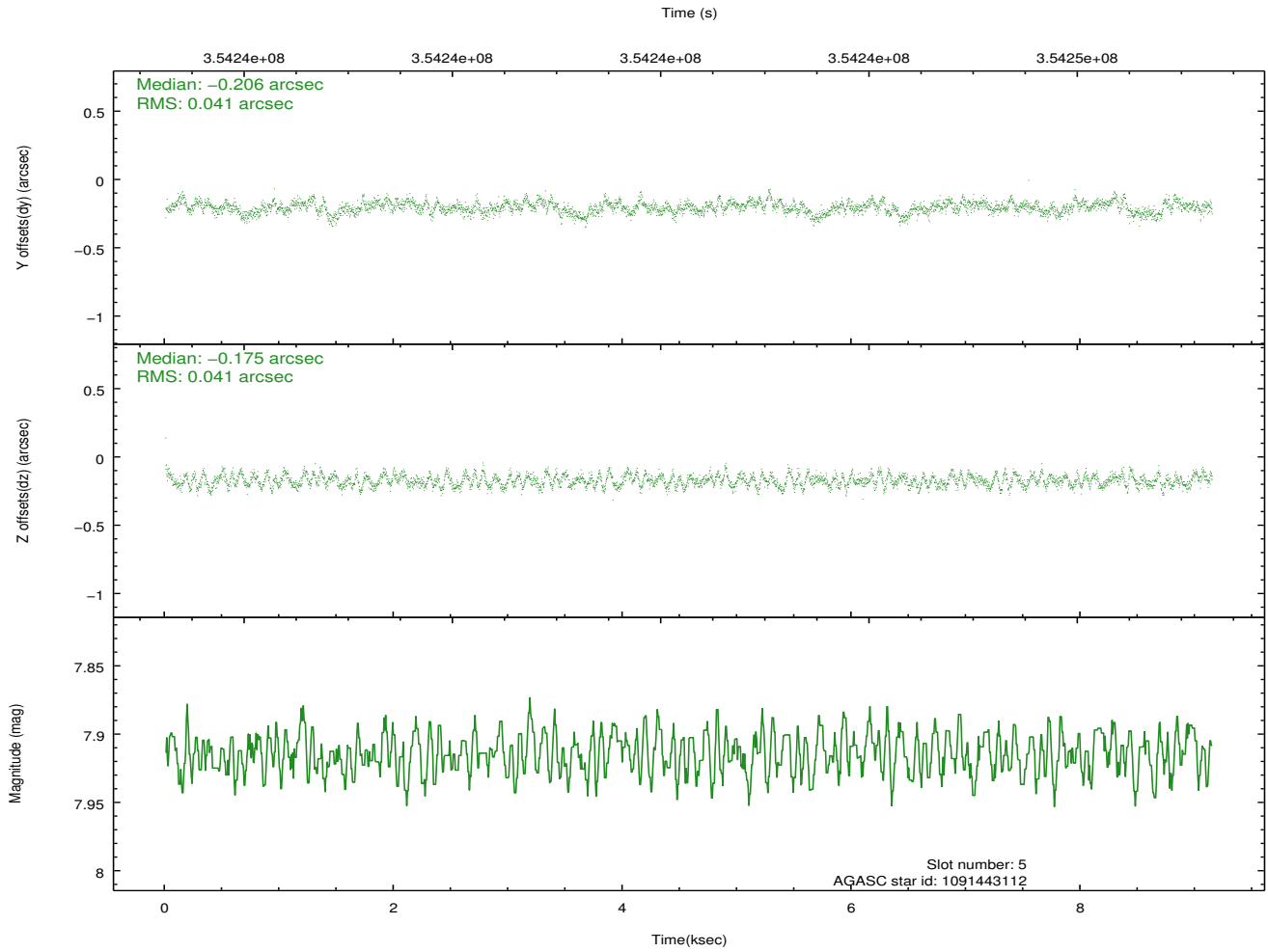
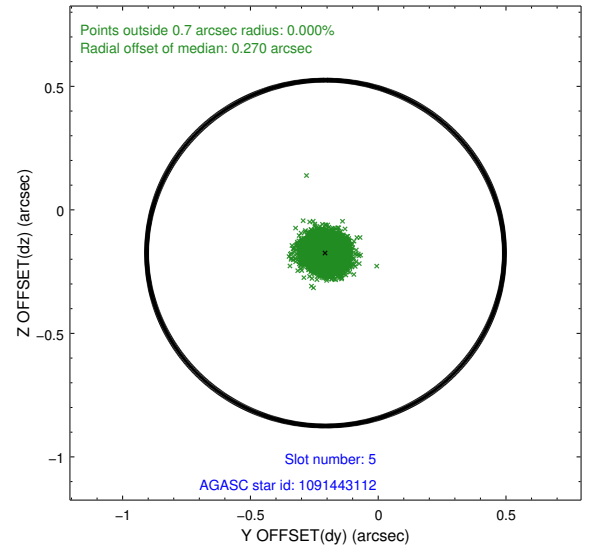
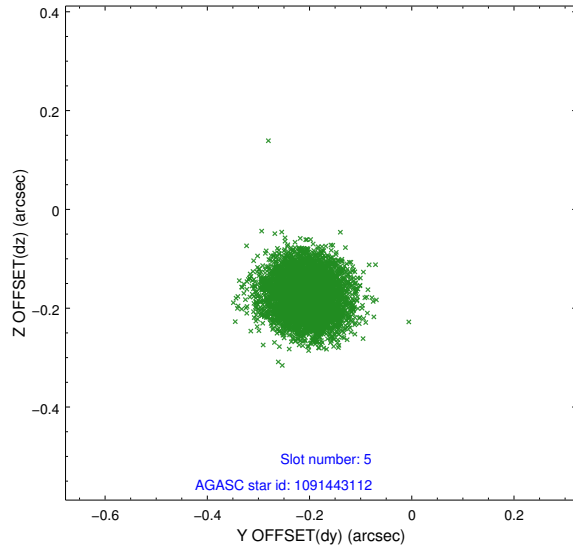
2.4.1 Slot 3



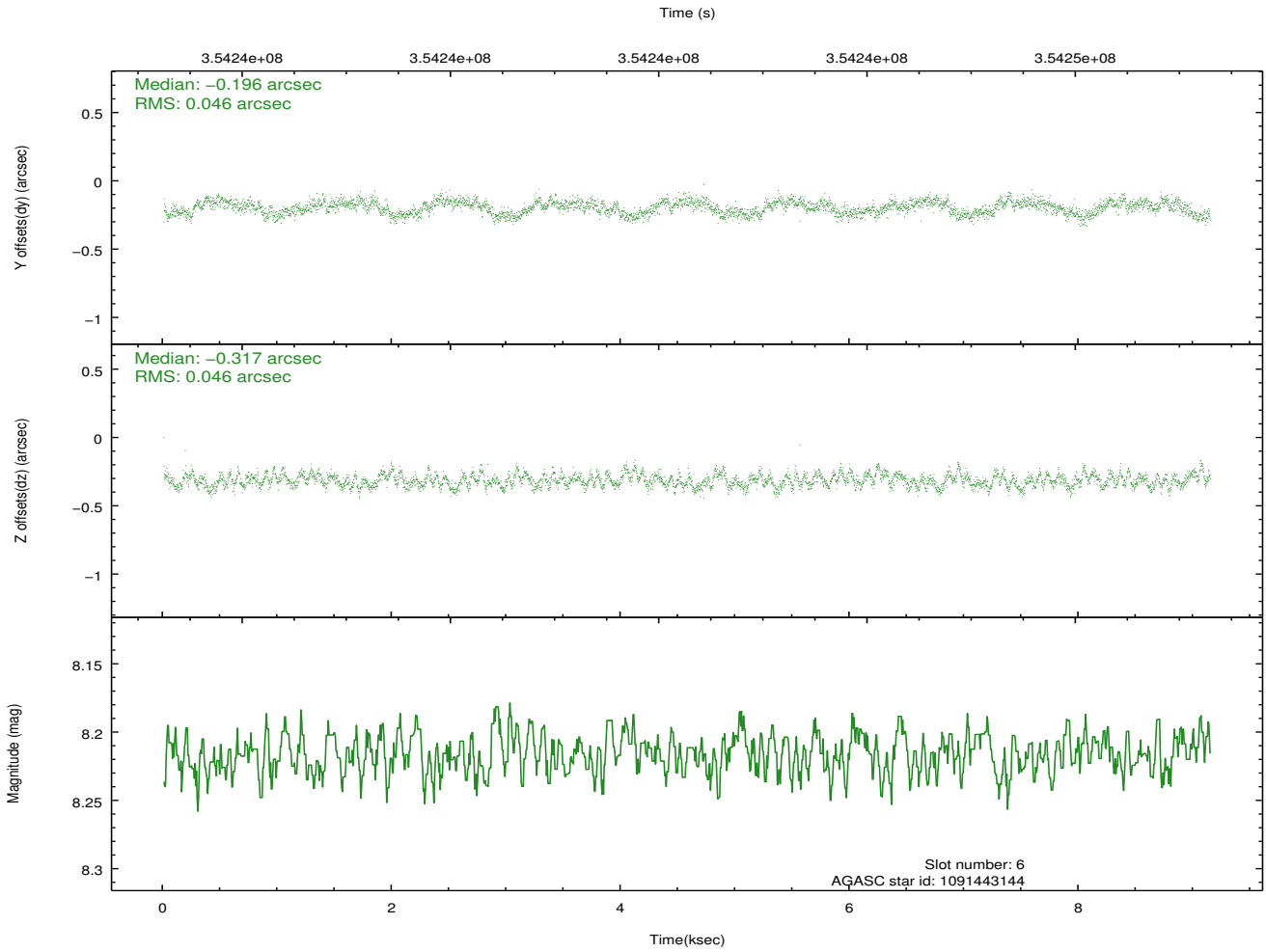
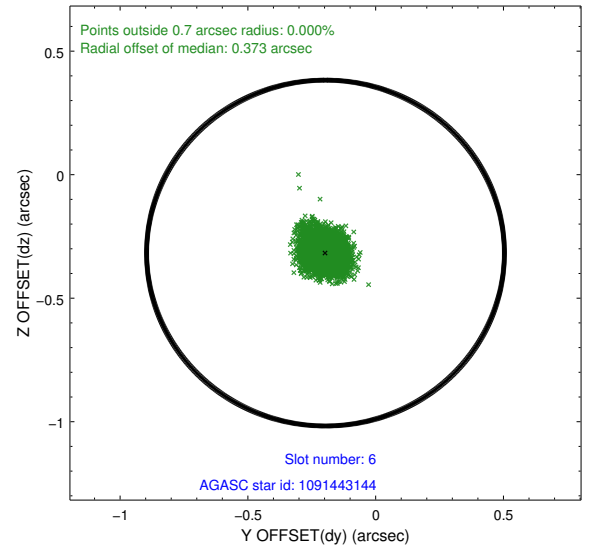
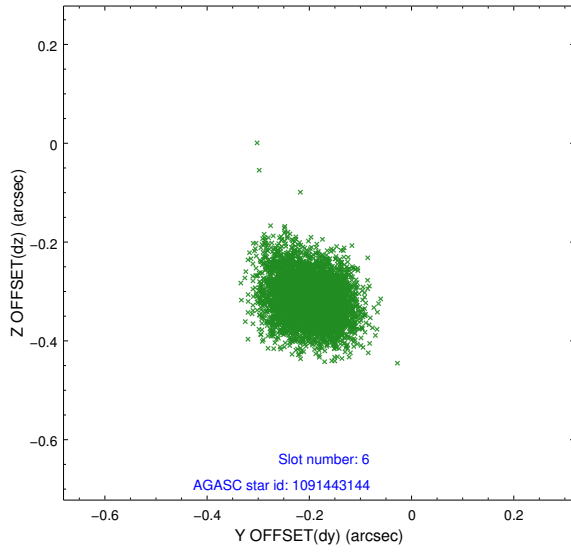
2.4.2 Slot 4



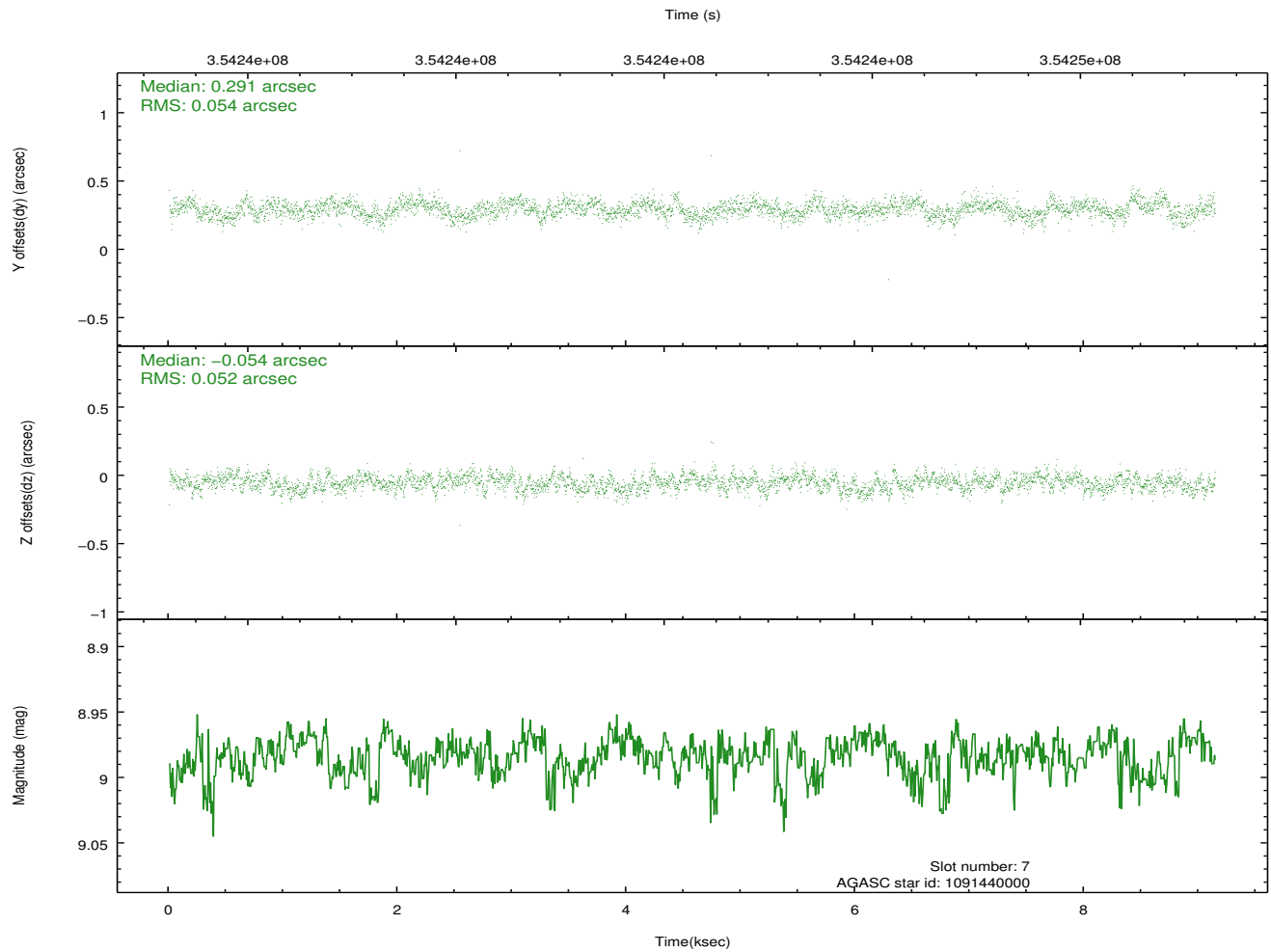
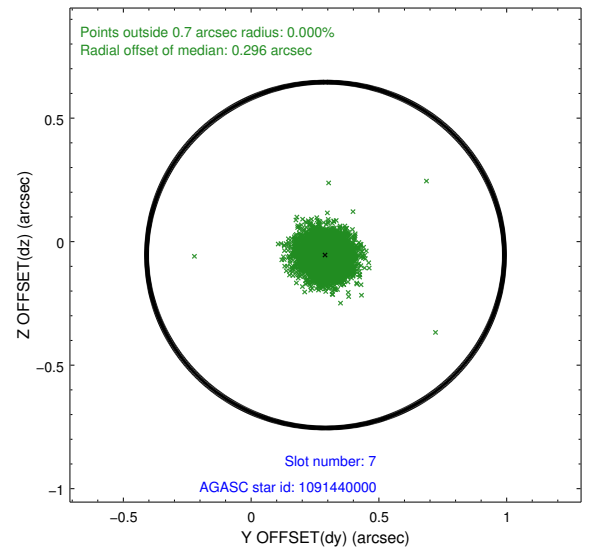
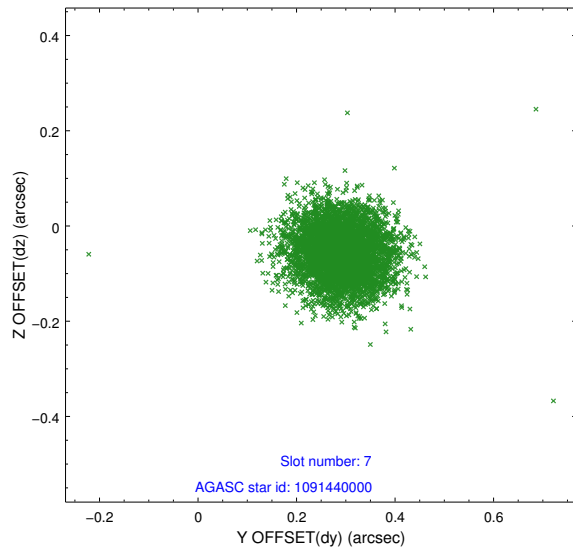
2.4.3 Slot 5



2.4.4 Slot 6

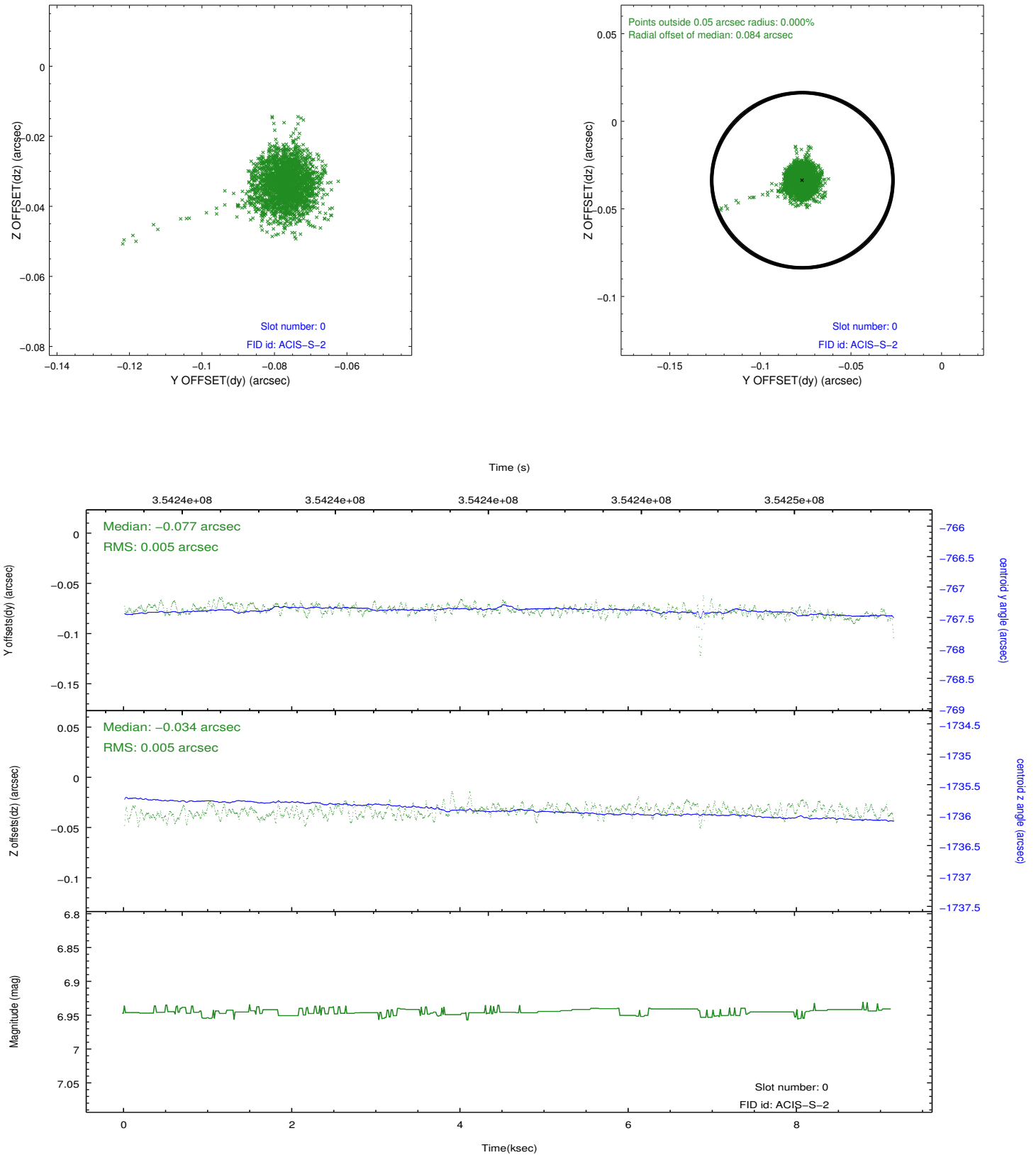


2.4.5 Slot 7

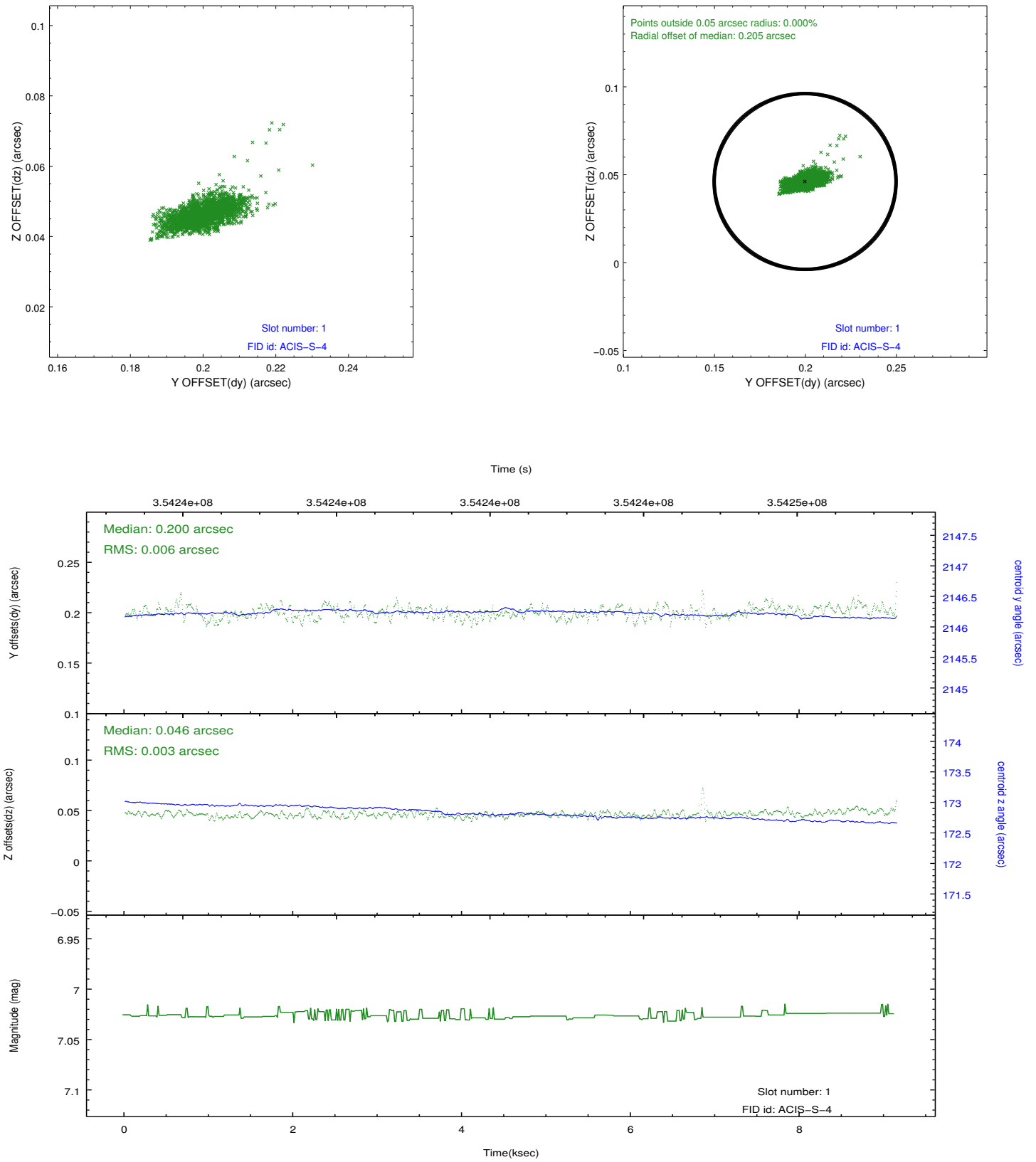


2.5 FID Slots

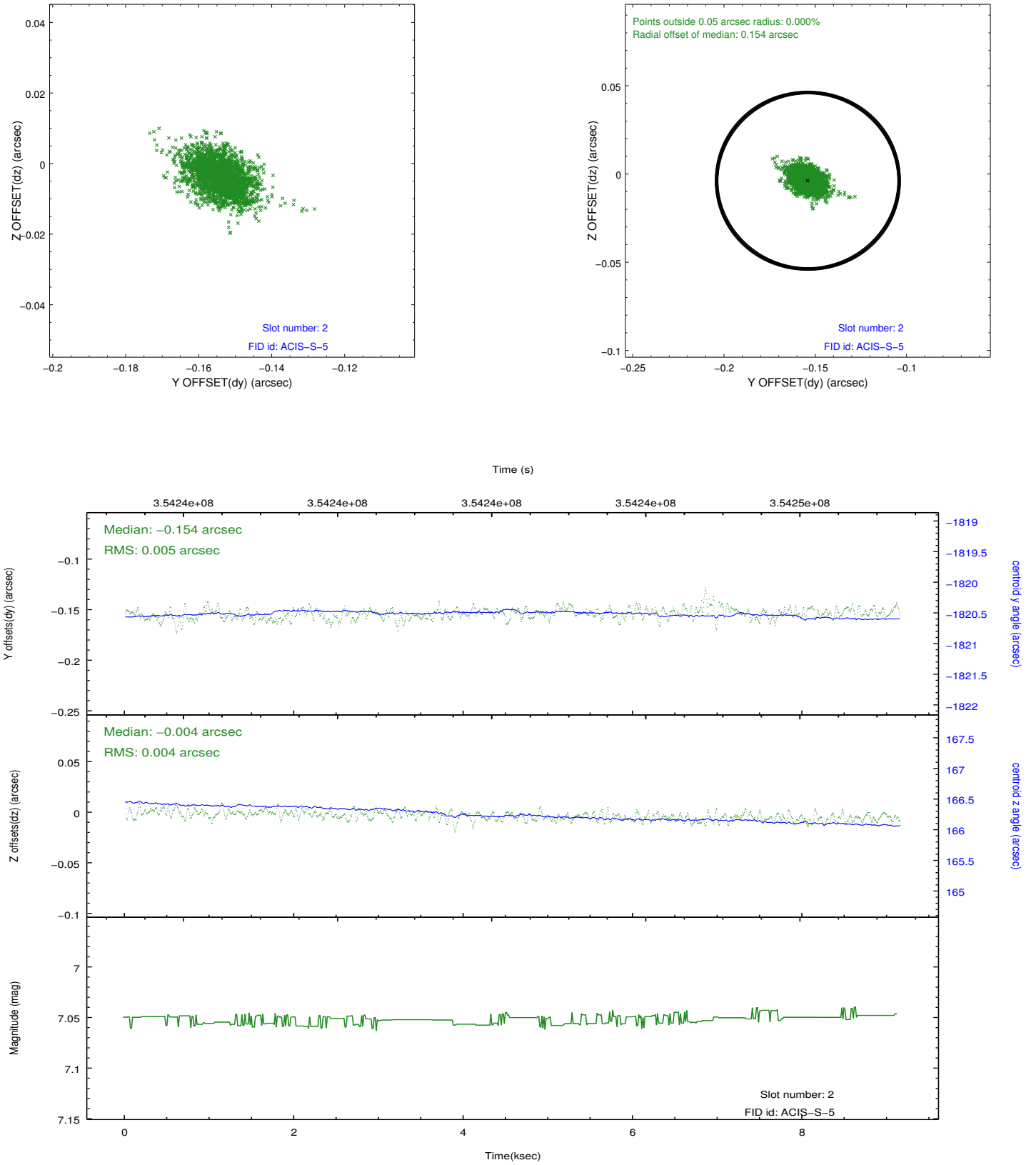
2.5.1 Slot 0



2.5.2 Slot 1



2.5.3 Slot 2



A Summary

A.1 Status

V&V Scientist	Jen Lauer
V&V Date (YYYY-MM-DD)	2012.06.07
V&V Edition	1
V&V Disposition and Status	OK
V&V Charge Time	9.13880007

A.2 Comments

Window constraint met.