

# V&V Reference Report

## L2 ASCDS Version : 8.4.4

Observation 10791 - L2 Version 2  
Chandra X-Ray Center

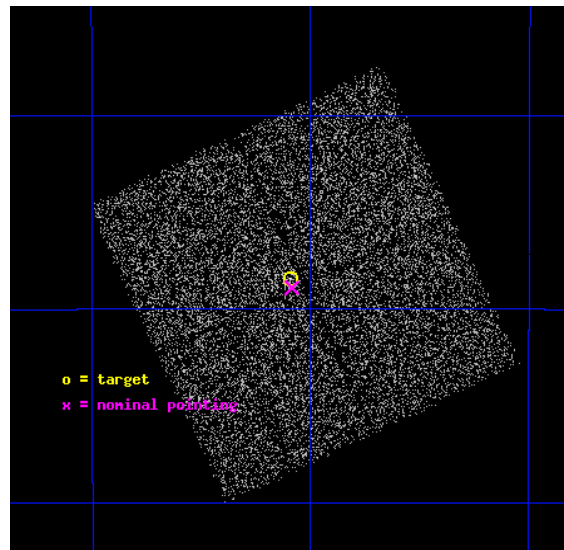
L2 Processing Date : May 22 2012

## Contents

<b>1</b>	<b>Front</b>	<b>2</b>
<b>2</b>	<b>OBI</b>	<b>3</b>
2.1	OBI . . . . .	3
2.1.1	Images . . . . .	3
2.1.2	Bias . . . . .	3
2.1.3	Parameters . . . . .	4
2.1.4	Events . . . . .	4
2.2	Compared Parameters . . . . .	5
2.3	Aspect . . . . .	6
2.4	Star Slots . . . . .	9
2.4.1	Slot 3 . . . . .	9
2.4.2	Slot 4 . . . . .	10
2.4.3	Slot 5 . . . . .	11
2.4.4	Slot 6 . . . . .	12
2.4.5	Slot 7 . . . . .	13
2.5	FID Slots . . . . .	14
2.5.1	Slot 0 . . . . .	14
2.5.2	Slot 1 . . . . .	15
2.5.3	Slot 2 . . . . .	16
<b>A</b>	<b>Summary</b>	<b>17</b>
A.1	Status . . . . .	17
A.2	Comments . . . . .	17

# 1 Front

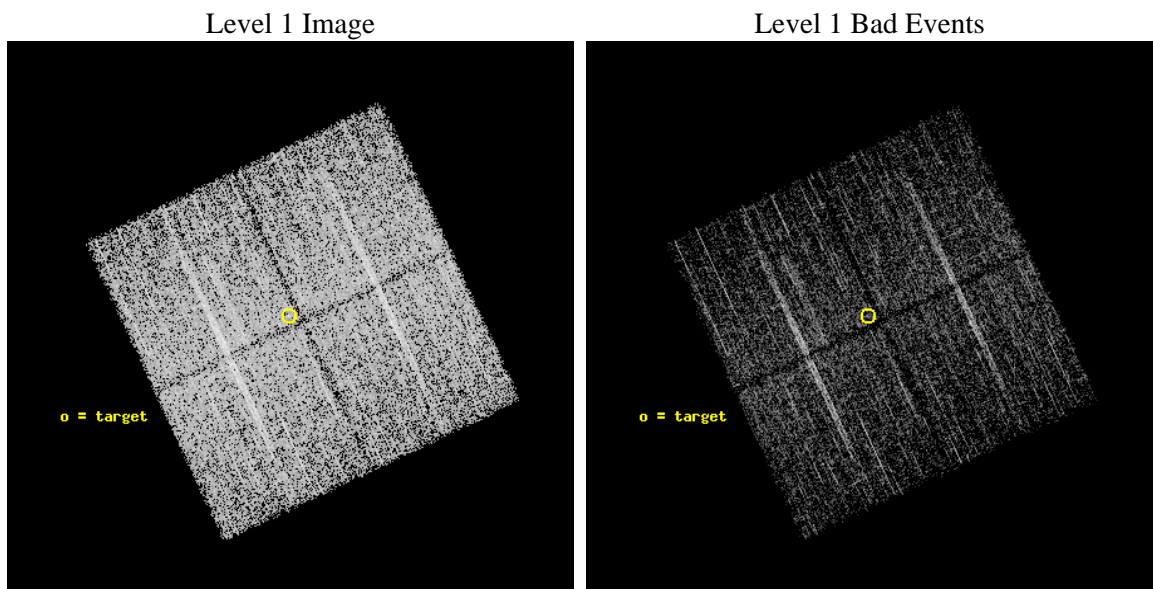
seq_num	200506	Sequence number
obs_id	10791	Observation id
title	ToO Studies with CXO of Pre-Main Sequence Stars Undergoing Optical Outbursts	Proposal title
observer	Professor David Weintraub	Principal investigator
object	EX Lupi	Source name
dtcycle	0	&#160
cycle	P	events from which exps? Prim/Second/Both
ra_targ	240.772917	Observer's specified target RA [deg]
dec_targ	-40.307	Observer's specified target Dec [deg]
ra_nom	240.77140919949	Nominal RA [deg]
dec_nom	-40.315019835937	Nominal Dec [deg]
roll_nom	244.85595426919	Nominal Roll [deg]
revision	2	Processing version of data
ontime	4113.7000316381	Sum of GTIs [s]
livetime	4059.9515122629	Livetime [s]
ontime0	4110.5590512753	Sum of GTIs [s]
ontime1	4113.7000316381	Sum of GTIs [s]
ontime2	4113.7000316381	Sum of GTIs [s]
ontime3	4113.7000316381	Sum of GTIs [s]
l2events	17623	Number of level 2 events



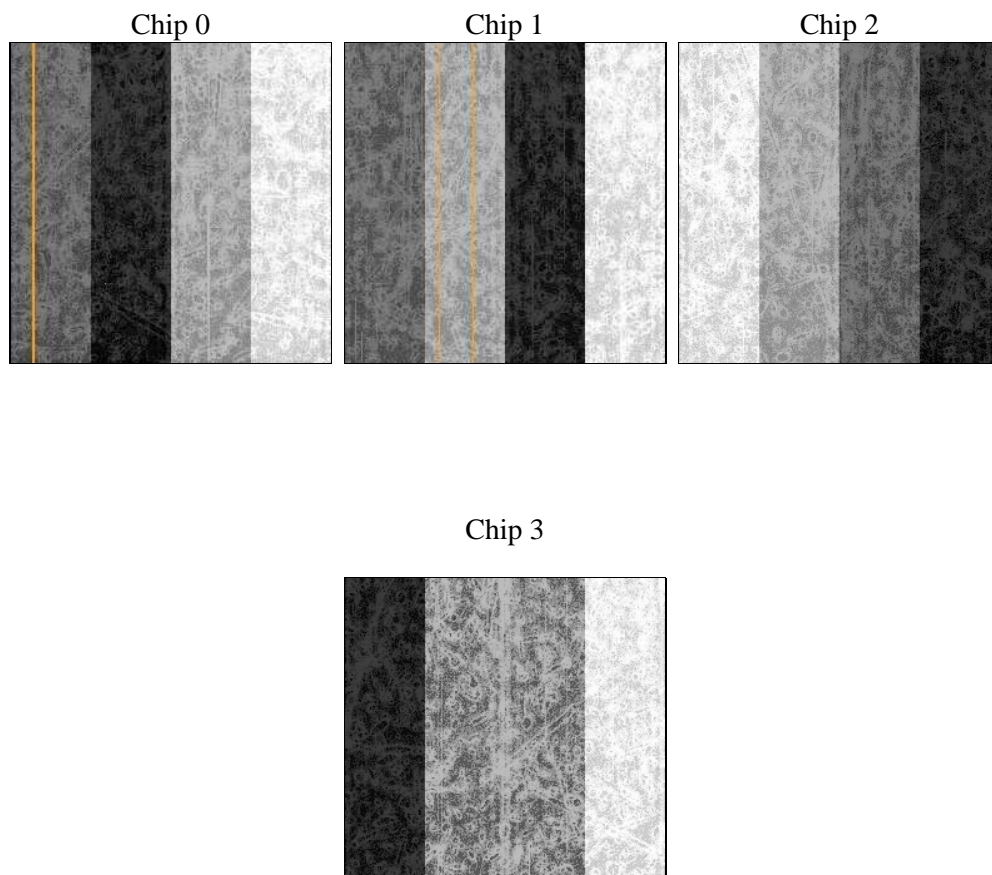
## 2 OBI

### 2.1 OBI

#### 2.1.1 Images



#### 2.1.2 Bias



### 2.1.3 Parameters

obi_num	0	Obi number	sched_exp_time	3960.357000	[s] Scheduled observation exposure time
ascdsver	8.4.4	Processing system revision	ontime	4113.7000316381	Sum of GTIs [s]
caldsver	4.4.9	&#160	ontime0	4110.5590512753	Sum of GTIs [s]
date	2012-05-22T10:27:33	Date and time of file creation	ontime1	4113.7000316381	Sum of GTIs [s]
revision	2	Processing version of data	ontime2	4113.7000316381	Sum of GTIs [s]
			ontime3	4113.7000316381	Sum of GTIs [s]
			l1events	183696	Number of level 1 events

### 2.1.4 Events

	ccd 0	ccd 1	ccd 2	ccd 3
level 1 events	44429	44484	47305	47478
rejected events	39328	39049	42311	42454
rejected %	88%	87%	89%	89%

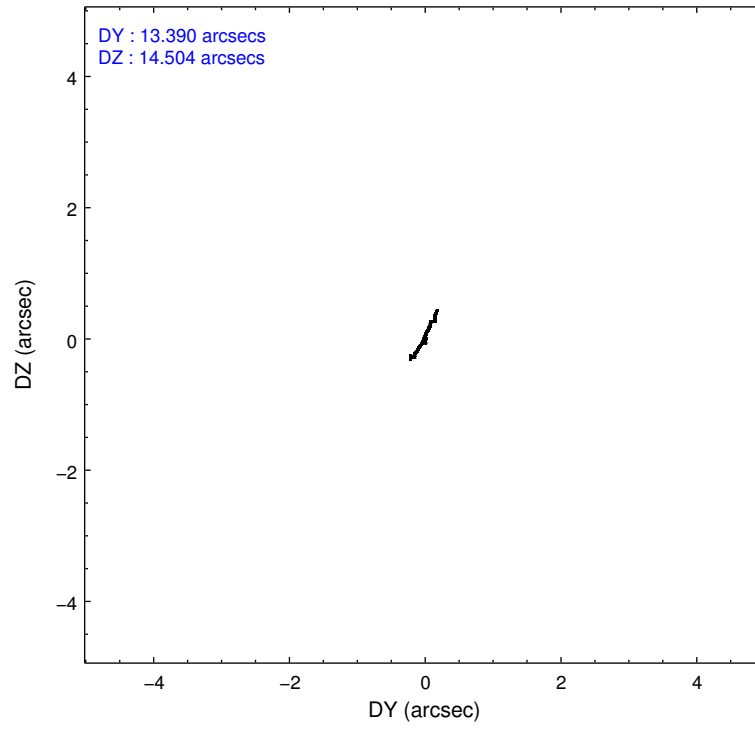
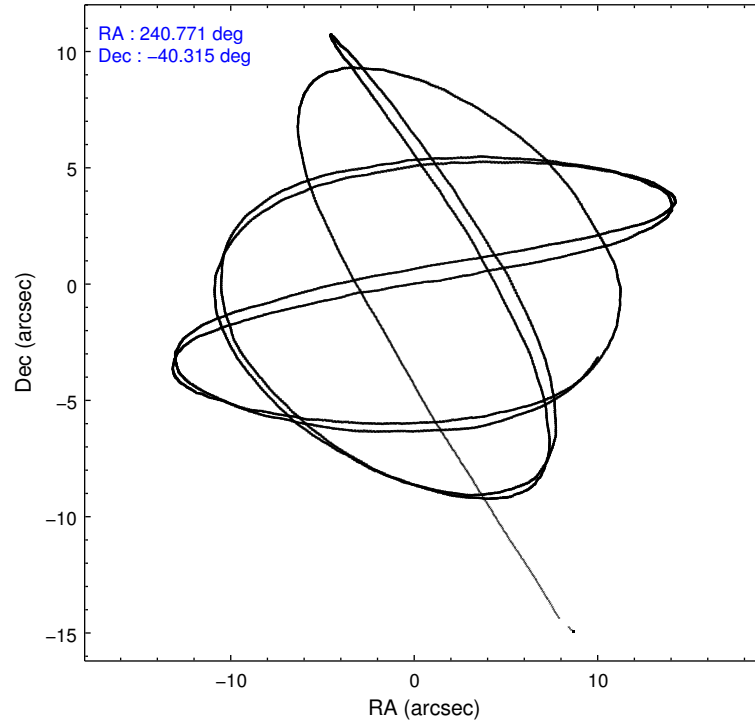
	ccd 0	ccd 1	ccd 2	ccd 3
grade 0 events	2553	2400	2590	2587
	5%	5%	5%	5%
grade 1 events	32	22	33	40
	0%	0%	0%	0%
grade 2 events	1343	1431	1271	1091
	3%	3%	2%	2%
grade 3 events	566	607	490	518
	1%	1%	1%	1%
grade 4 events	511	603	528	578
	1%	1%	1%	1%
grade 5 events	1962	2115	1781	2376
	4%	4%	3%	5%
grade 6 events	969	1220	965	1058
	2%	2%	2%	2%
grade 7 events	36493	36086	39647	39230
	82%	81%	83%	82%

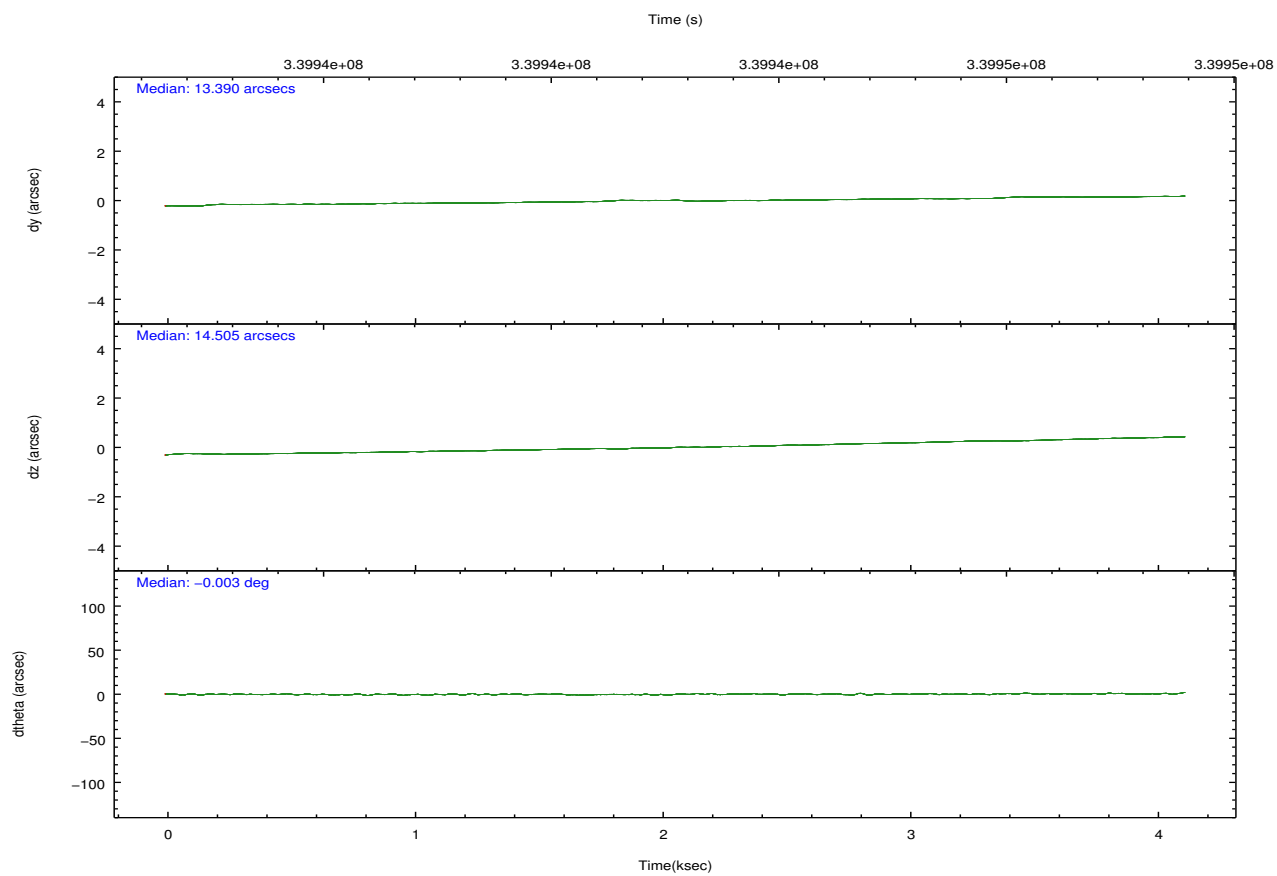
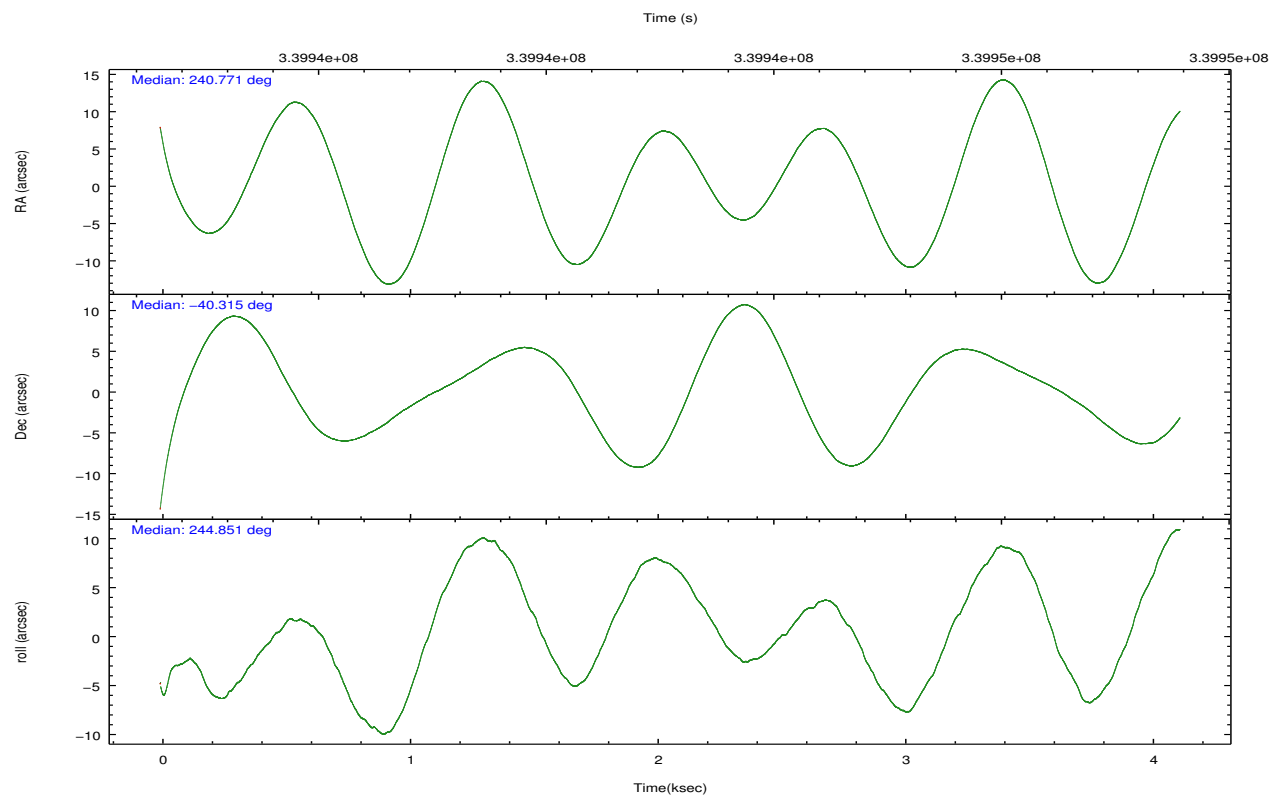


## 2.2 Compared Parameters

Parameter	Planned	Actual	Parameter	Planned	Actual
Instrument	ACIS	ACIS	Obspar format version number	7	7
Detector	ACIS-0123	ACIS-0123	Obspar file type	PREDICTED	ACTUAL
Grating	NONE	NONE	Obspar update status	NONE	UPDATED
Data mode	FAINT	FAINT	Number of optional ACIS chips dropped	0	0
Observation mode	POINTING	POINTING	On-chip summing requested	N	N
[deg] Pointing RA	240.768278	240.7714091994947	Subarray requested	NONE	NONE
[deg] Pointing Dec	-40.287620	-40.31501983593691	Alternating exposures requested	N	N
[deg] Pointing Roll	244.645296	244.8559542691934	[s] Primary exposure time	0.000000	3.1
[mm] SIM focus pos	-0.782348	-0.7809083437167272			
[mm] SIM defocus	0	0.001439871863259334			
[mm] SIM translation stage pos	-233.592463	-233.5874344608287			
[mm] SIM translation stage offset	0	-0.005018542100998502			
[s] Observation start time (MET)	339942644.184000	339941398.72906			
Observation start date	2008-10-09T12:29:39	2008-10-09T12:09:58			
[s] Observation end time (MET)	339946604.184000	339946832.76683			
Observation end date	2008-10-09T13:35:39	2008-10-09T13:40:32			
Read mode	TIMED	TIMED			

## 2.3 Aspect



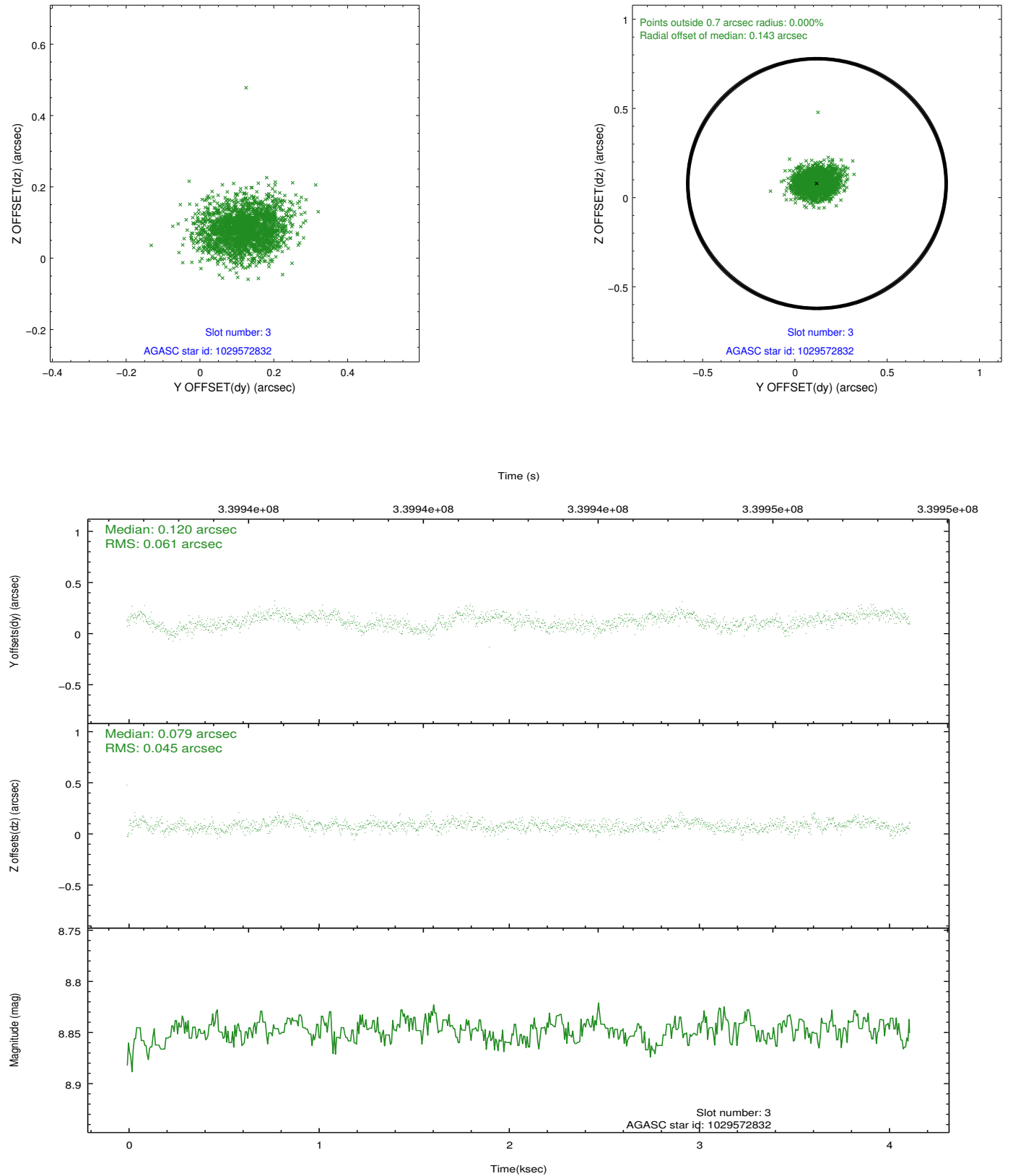


### Slot Statistics

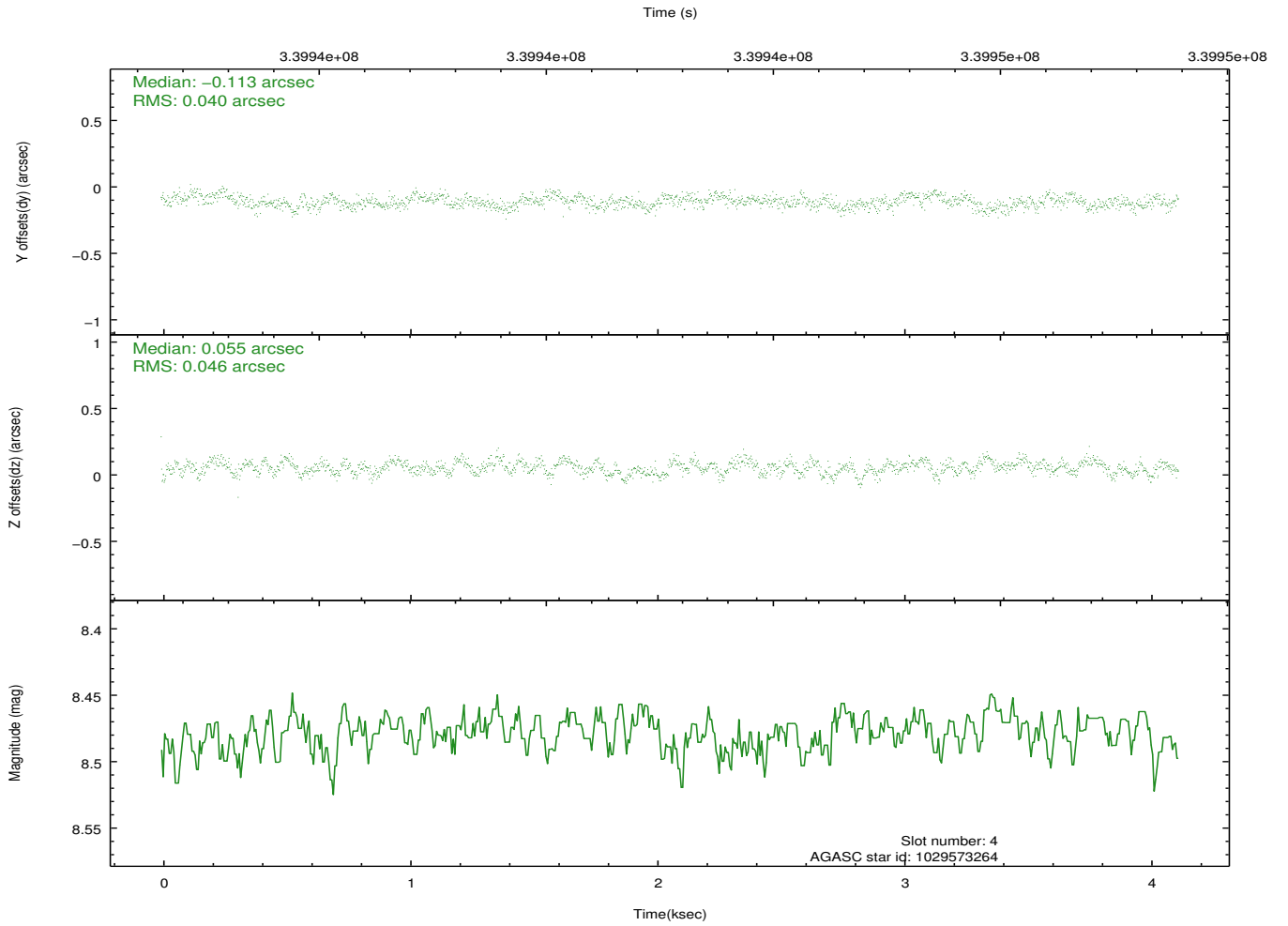
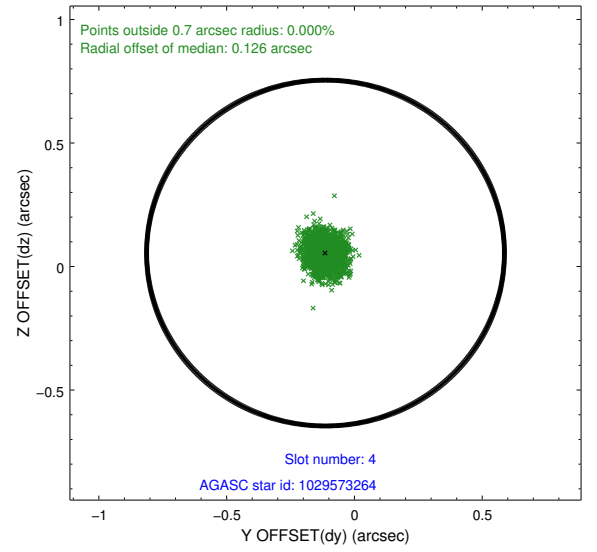
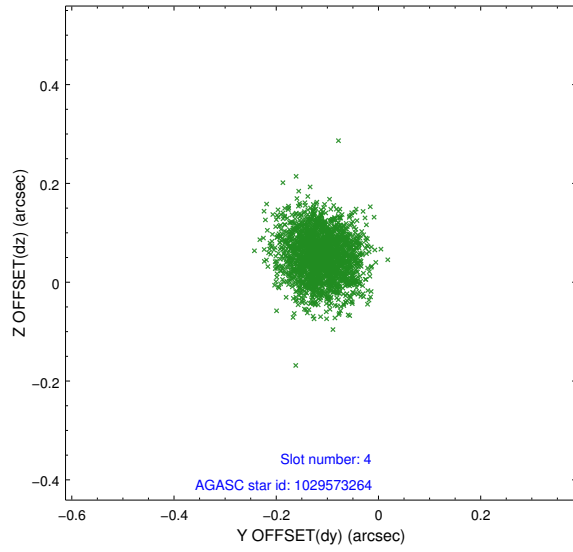
slot	status	id	mag	n_pts	med_dy	med_dz	dr1	dr2	ra	dec	mean_y	mean_z
0	FID	ACIS-I-1	7.05	1004	0.013	0.034	0.011	0.018	0.000000	0.000000	926.15	-838.07
1	FID	ACIS-I-5	7.03	1004	-0.181	0.033	0.007	0.012	0.000000	0.000000	-1821.34	1058.63
2	FID	ACIS-I-6	7.05	1004	0.077	0.004	0.010	0.016	0.000000	0.000000	390.09	1704.84
3	GUIDE	1029572832	8.85	2008	0.120	0.079	0.081	0.130	240.911636	-41.020487	2217.85	1482.21
4	GUIDE	1029573264	8.48	2009	-0.113	0.055	0.066	0.104	241.313581	-40.319539	-531.97	1404.60
5	GUIDE	1029575760	7.99	2008	0.088	-0.062	0.066	0.100	241.064770	-40.844631	1467.67	1589.81
6	GUIDE	1029578000	7.72	2009	-0.078	-0.050	0.068	0.108	241.211449	-40.737672	949.91	1788.42
7	GUIDE	1029580448	9.64	1994	-0.019	-0.015	0.131	0.203	240.622045	-39.636367	-1944.12	-1369.43

## 2.4 Star Slots

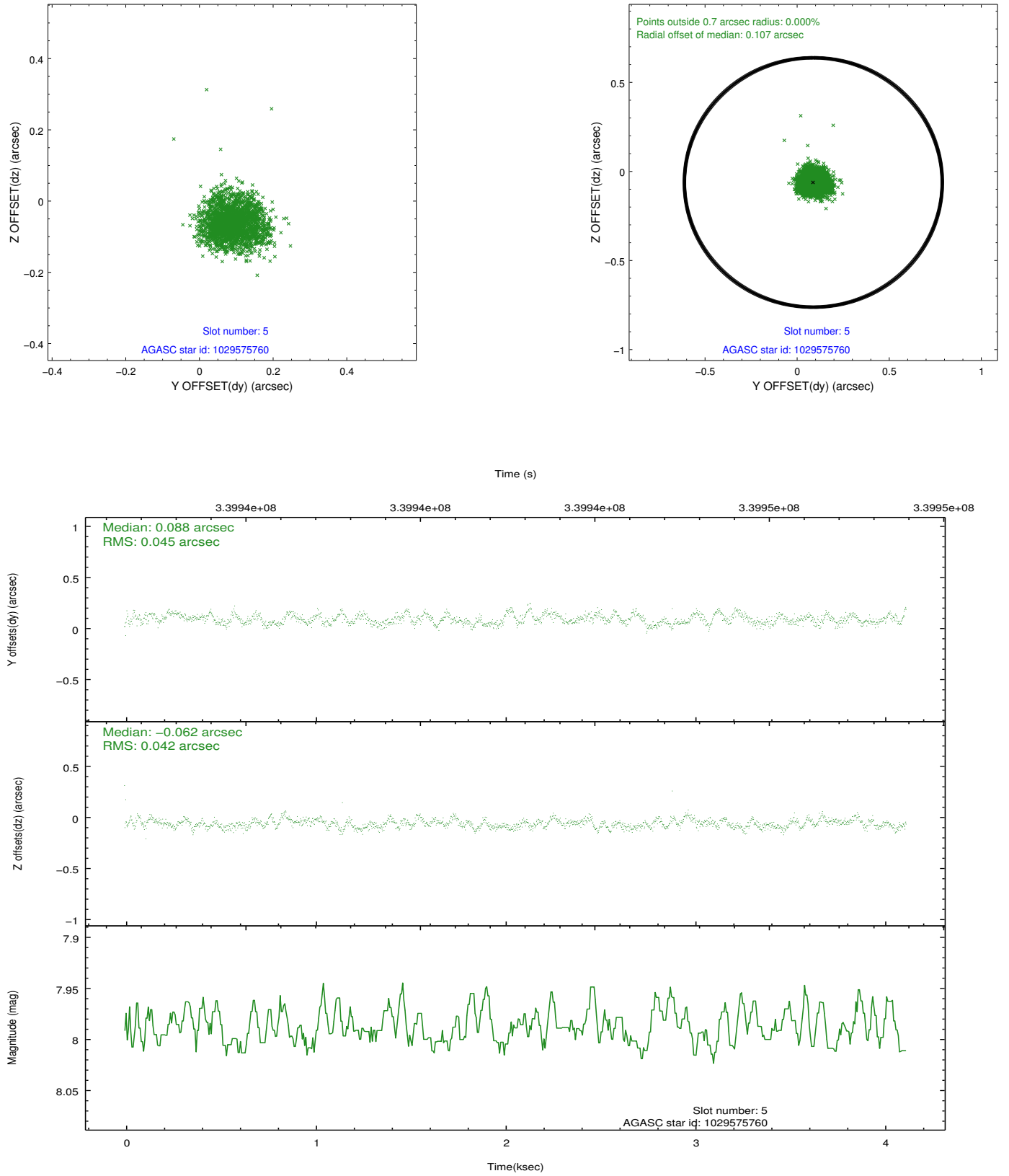
### 2.4.1 Slot 3



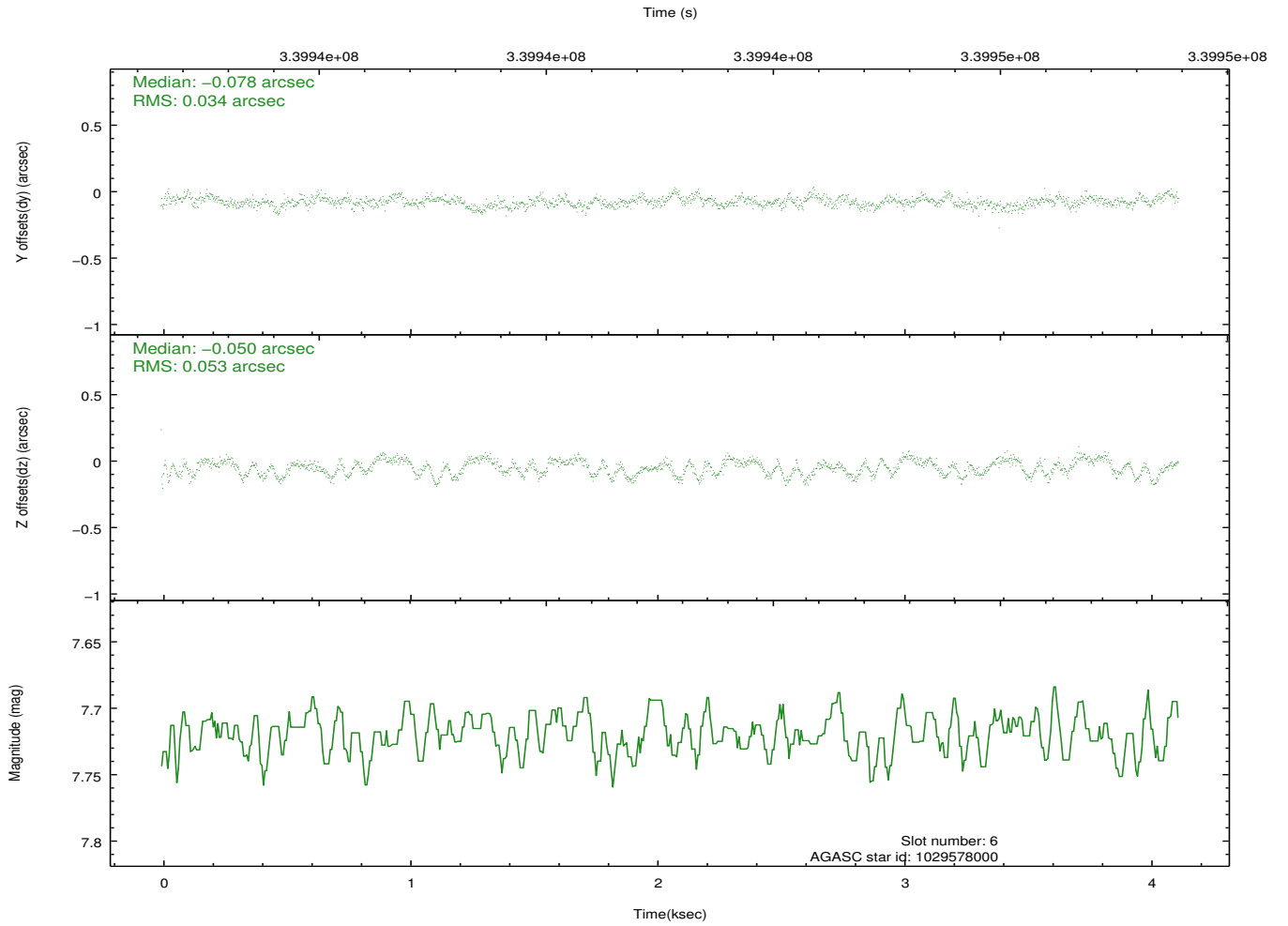
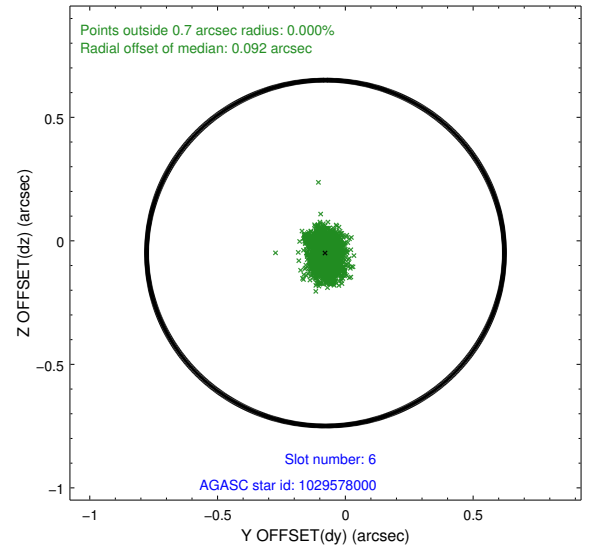
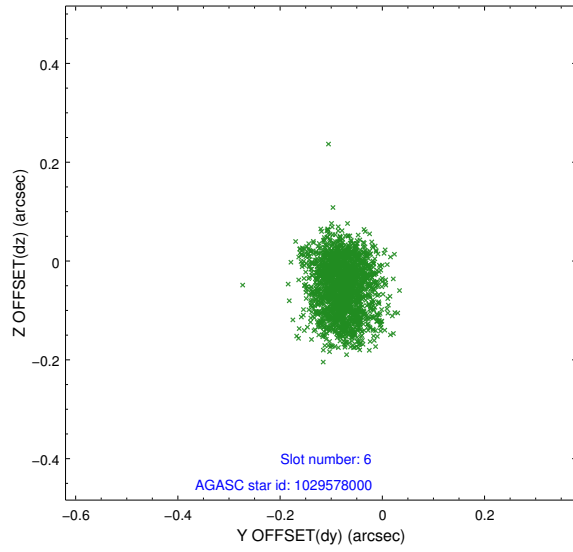
## 2.4.2 Slot 4



### 2.4.3 Slot 5

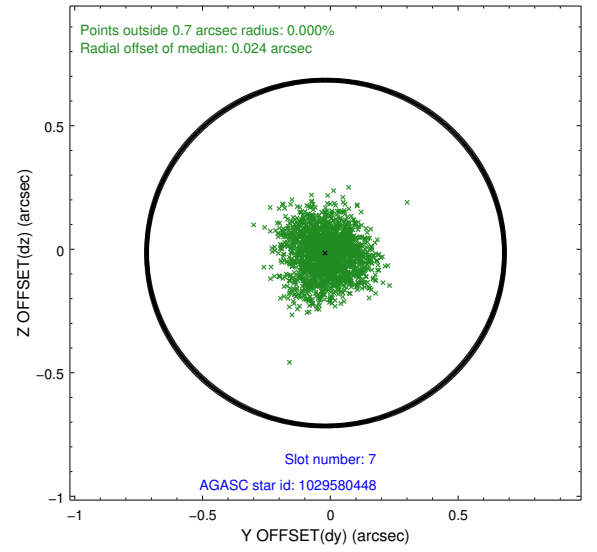
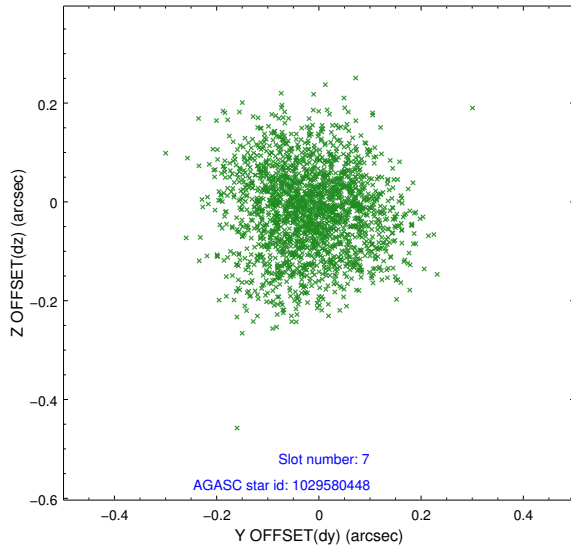


## 2.4.4 Slot 6

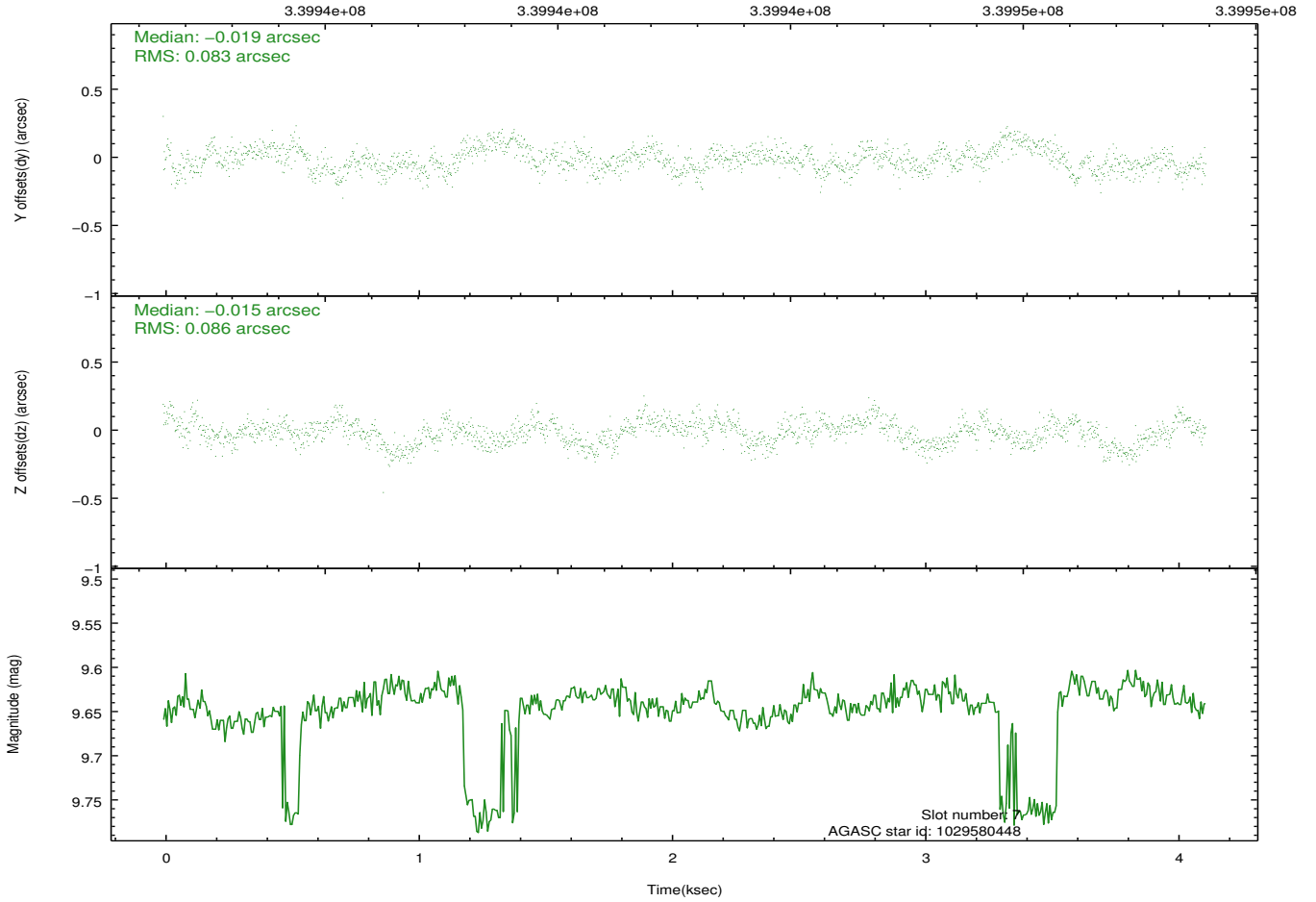




## 2.4.5 Slot 7

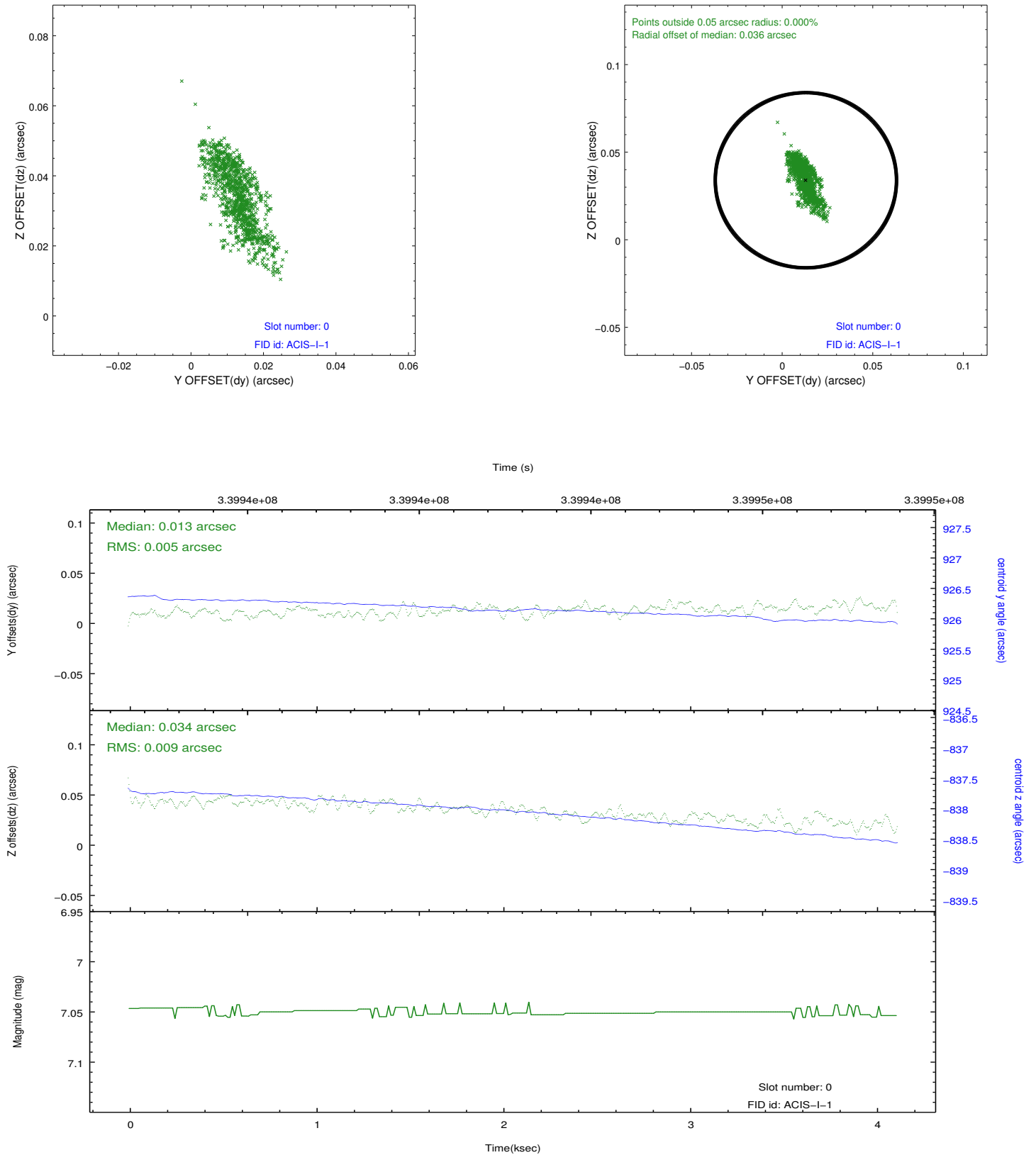


Time (s)

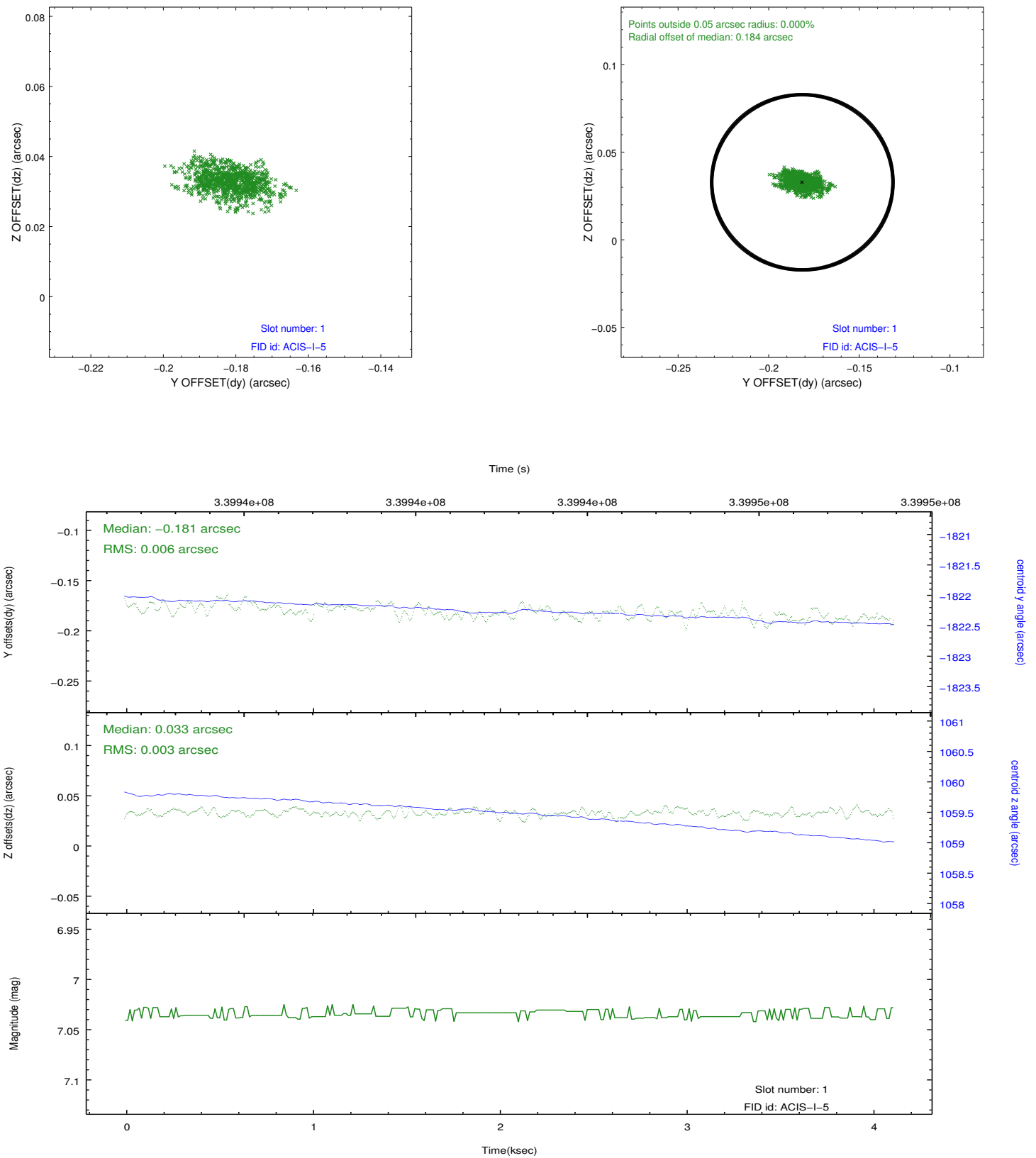


## 2.5 FID Slots

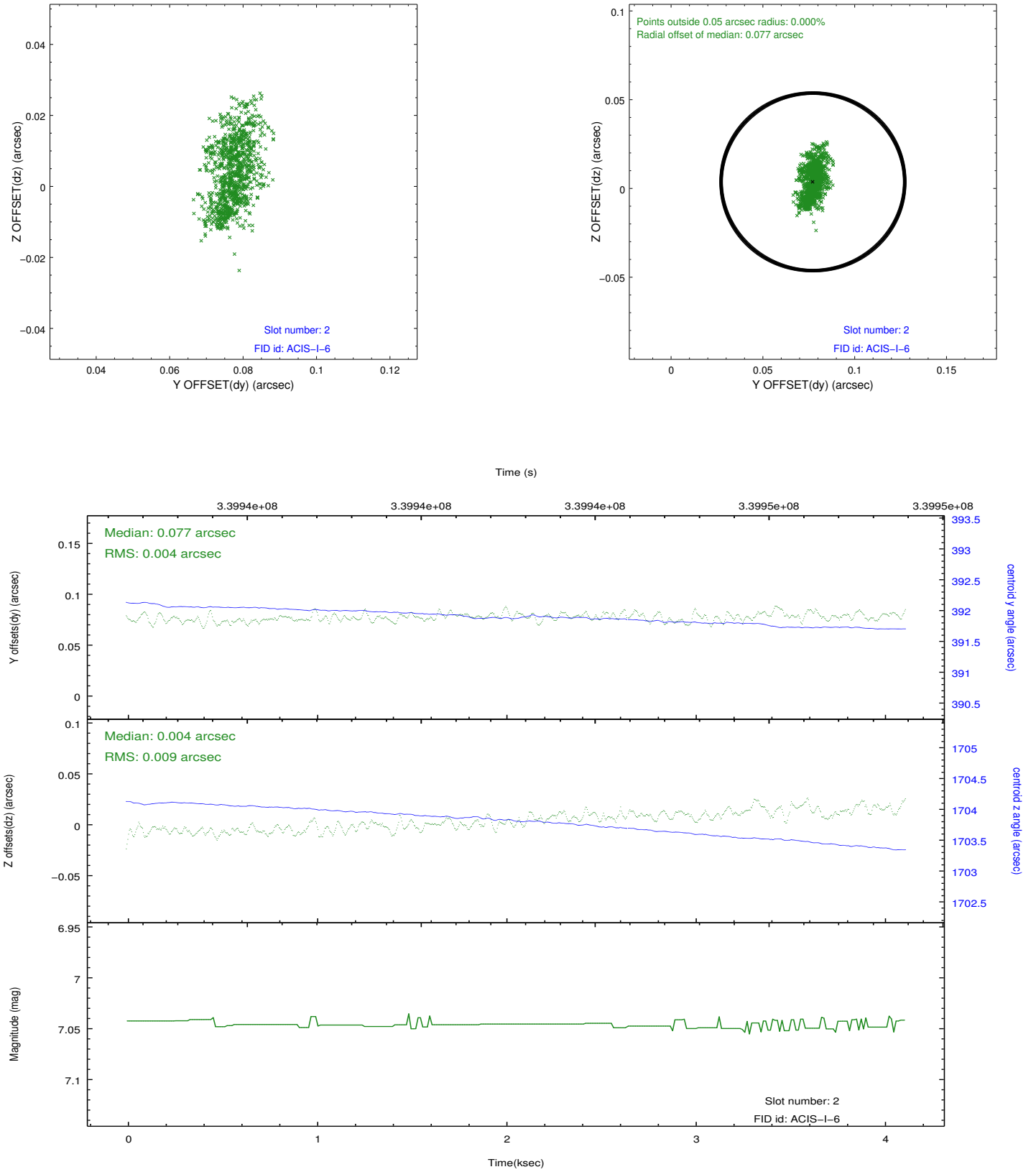
### 2.5.1 Slot 0



## 2.5.2 Slot 1



### 2.5.3 Slot 2



## A Summary

### A.1 Status

V&V Scientist	Jen Lauer
V&V Date (YYYY-MM-DD)	2012.05.30
V&V Edition	1
V&V Disposition and Status	OK
V&V Charge Time	4.11370003

### A.2 Comments

Monitor constraint met, follows obs8924 by 115 days.