

V&V Reference Report

L2 ASCDS Version : 7.6.10

Observation 950 - L2 Version 001
Chandra X-Ray Center

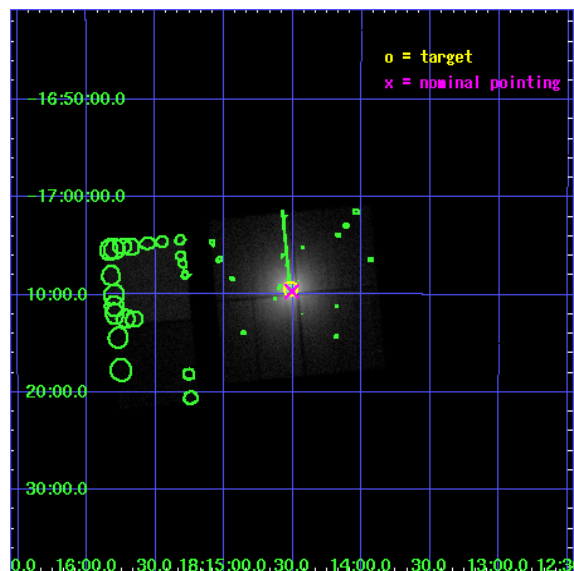
L2 Processing Date : Jun 2 2007

Contents

1	Front	2
2	OBI	3
2.1	OBI	3
2.1.1	Images	3
2.1.2	Bias	3
2.1.3	Parameters	4
2.1.4	Events	4
2.2	Compared Parameters	5
2.3	Aspect	6
2.4	Star Slots	9
2.4.1	Slot 3	9
2.4.2	Slot 4	10
2.4.3	Slot 5	11
2.4.4	Slot 6	12
2.4.5	Slot 7	13
2.5	FID Slots	14
2.5.1	Slot 0	14
2.5.2	Slot 1	15
2.5.3	Slot 2	16
3	Point Sources	17
A	Summary	18
A.1	Status	18
A.2	Comments	18

1 Front

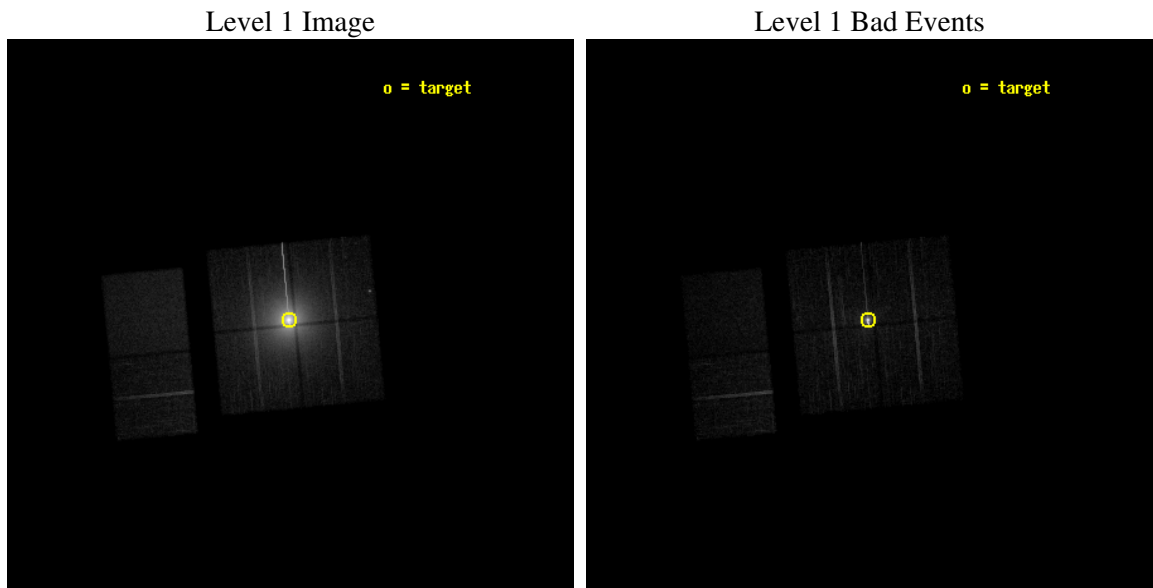
seq_num	400091
obs_id	950
title	SURVEYING X-RAY HALOS WITH AXAF: MEASURING CLOUD TOMOGRAPHY AND GRAIN COMPOSITION
observer	Dr. Randall Smith
object	GX 13+1
dtcycle	0
cycle	P
ra_targ	273.629167
dec_targ	-17.157222
ra_nom	273.6267927909
dec_nom	-17.161477350987
roll_nom	264.62041539019
revision	3
ontime	9756.8000090867
livetime	9633.253532532
ontime0	9756.8000090867
ontime1	9756.8000090867
ontime2	9753.5590388477
ontime3	9756.8000090867
ontime6	9756.8000090867
ontime7	9756.8000090867
l2events	713825



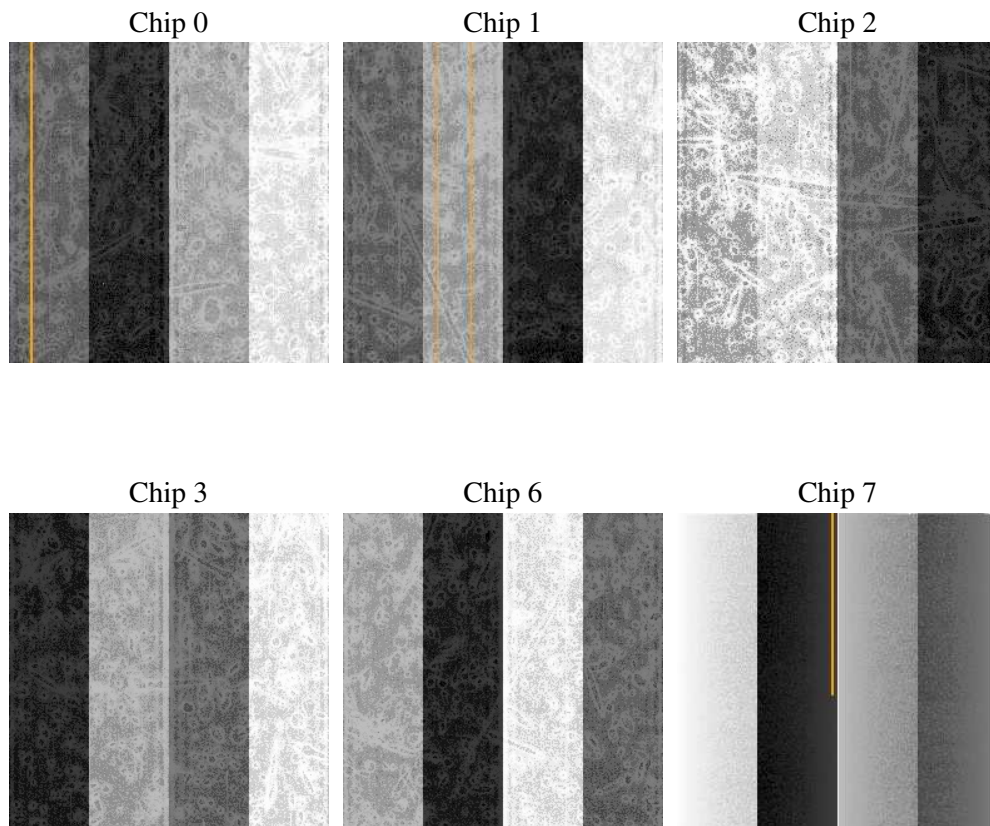
2 OBI

2.1 OBI

2.1.1 Images



2.1.2 Bias



2.1.3 Parameters

obi_num	0
ascdsver	7.6.10
caldbver	3.4.0
date	2007-06-02T04:39:18
revision	3

sched_exp_time	9800.000000
ontime	9756.8000090867
ontime0	9756.8000090867
ontime1	9756.8000090867
ontime2	9753.5590388477
ontime3	9756.8000090867
ontime6	9756.8000090867
ontime7	9756.8000090867
l1events	1087829

2.1.4 Events

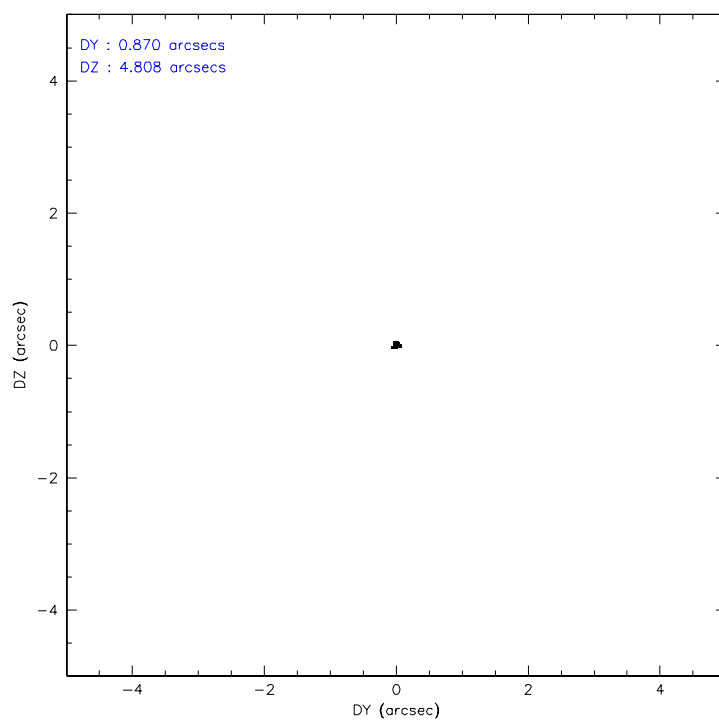
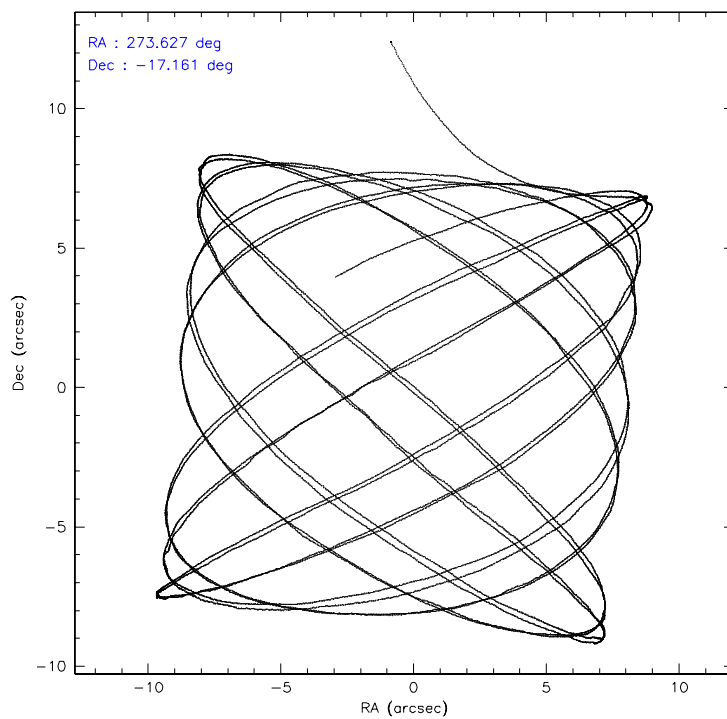
	ccd 0	ccd 1	ccd 2	ccd 3	ccd 6	ccd 7
level 1 events	110258	149289	173246	519611	59968	75457
rejected events	45573	45417	53471	105443	49954	38896
rejected %	41%	30%	30%	20%	83%	51%

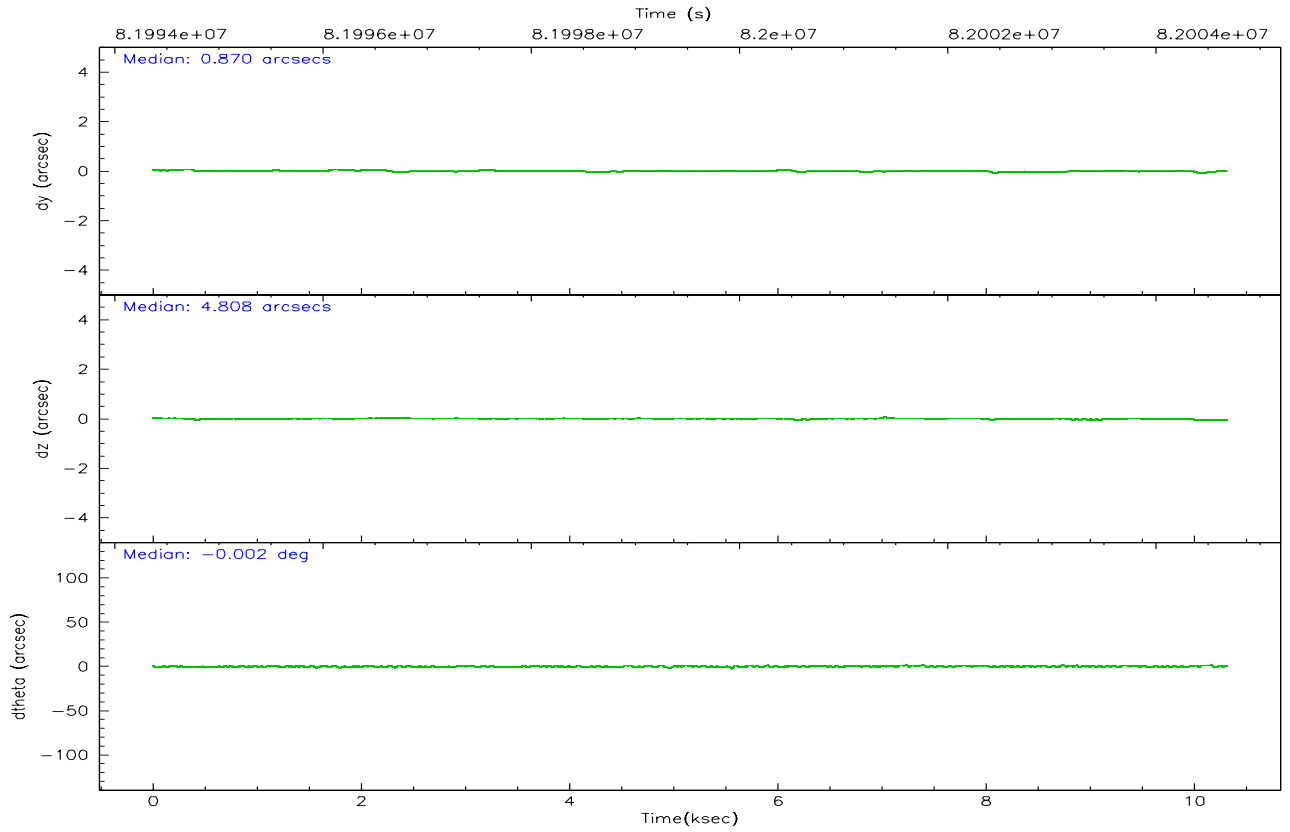
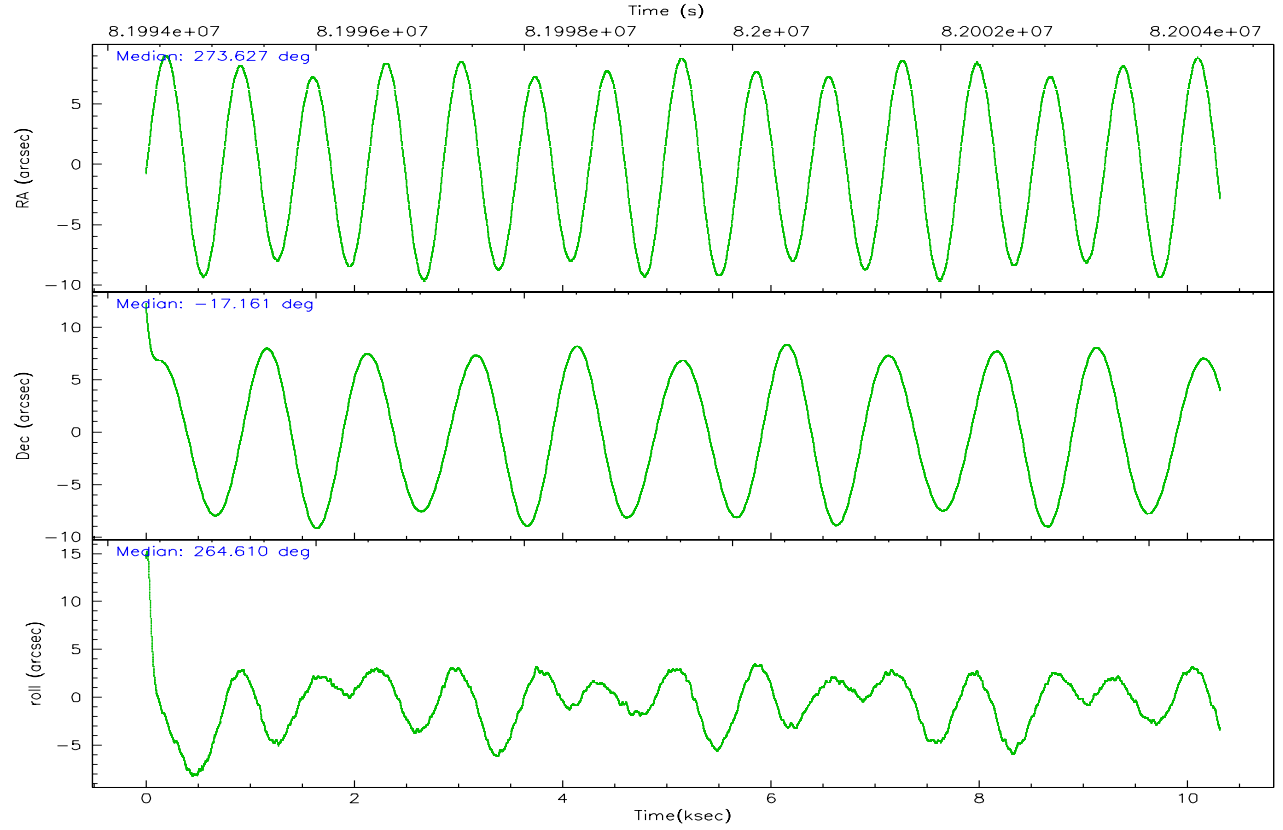
	ccd 0	ccd 1	ccd 2	ccd 3	ccd 6	ccd 7
grade 0 events	46822	75931	88912	291606	5393	4459
	42%	50%	51%	56%	8%	5%
grade 1 events	264	436	528	8294	33	67
	0%	0%	0%	1%	0%	0%
grade 2 events	8535	13502	15131	58065	1633	7482
	7%	9%	8%	11%	2%	9%
grade 3 events	2807	4672	5024	18809	810	3520
	2%	3%	2%	3%	1%	4%
grade 4 events	2913	4449	4884	19021	772	3383
	2%	2%	2%	3%	1%	4%
grade 5 events	2077	2399	2233	8812	2253	6601
	1%	1%	1%	1%	3%	8%
grade 6 events	3632	5344	5858	26960	1412	17739
	3%	3%	3%	5%	2%	23%
grade 7 events	43208	42556	50676	88044	47662	32206
	39%	28%	29%	16%	79%	42%

2.2 Compared Parameters

Parameter	Planned	Actual	Parameter	Planned	Actual
Instrument	ACIS	ACIS	Obspar format version number	6	6
Detector	ACIS-012367	ACIS-012367	Obspar file type	PREDICTED	ACTUAL
Grating	NONE	NONE	Obspar update status	NONE	UPDATED
Data mode	FAINT	FAINT	Number of optional ACIS chips dropped	0	0
Observation mode	POINTING	POINTING	On-chip summing requested	N	N
Pointing RA	273.614815	273.6267927908985	Subarray requested	NONE	NONE
Pointing Dec	-17.136452	-17.16147735098697	Alternating exposures requested	N	N
Pointing Roll	264.408171	264.6204153901855	Primary exposure time	3.200000	3.2
SIM focus pos (mm)	-0.782348	-0.7809083437167272			
SIM defocus (mm)	0	0.001439871863259334			
SIM translation stage pos (mm)	-233.592463	-233.5874344608287			
SIM translation stage offset (mm)	0	-0.005018542100998502			
Observation start time	81994884.184000	81993669.320693			
Observation start date	2000-08-07T00:20:20	2000-08-07T00:01:09			
Observation end time	82004684.184000	82005145.221121			
Observation end date	2000-08-07T03:03:40	2000-08-07T03:12:25			
Read mode	TIMED	TIMED			

2.3 Aspect



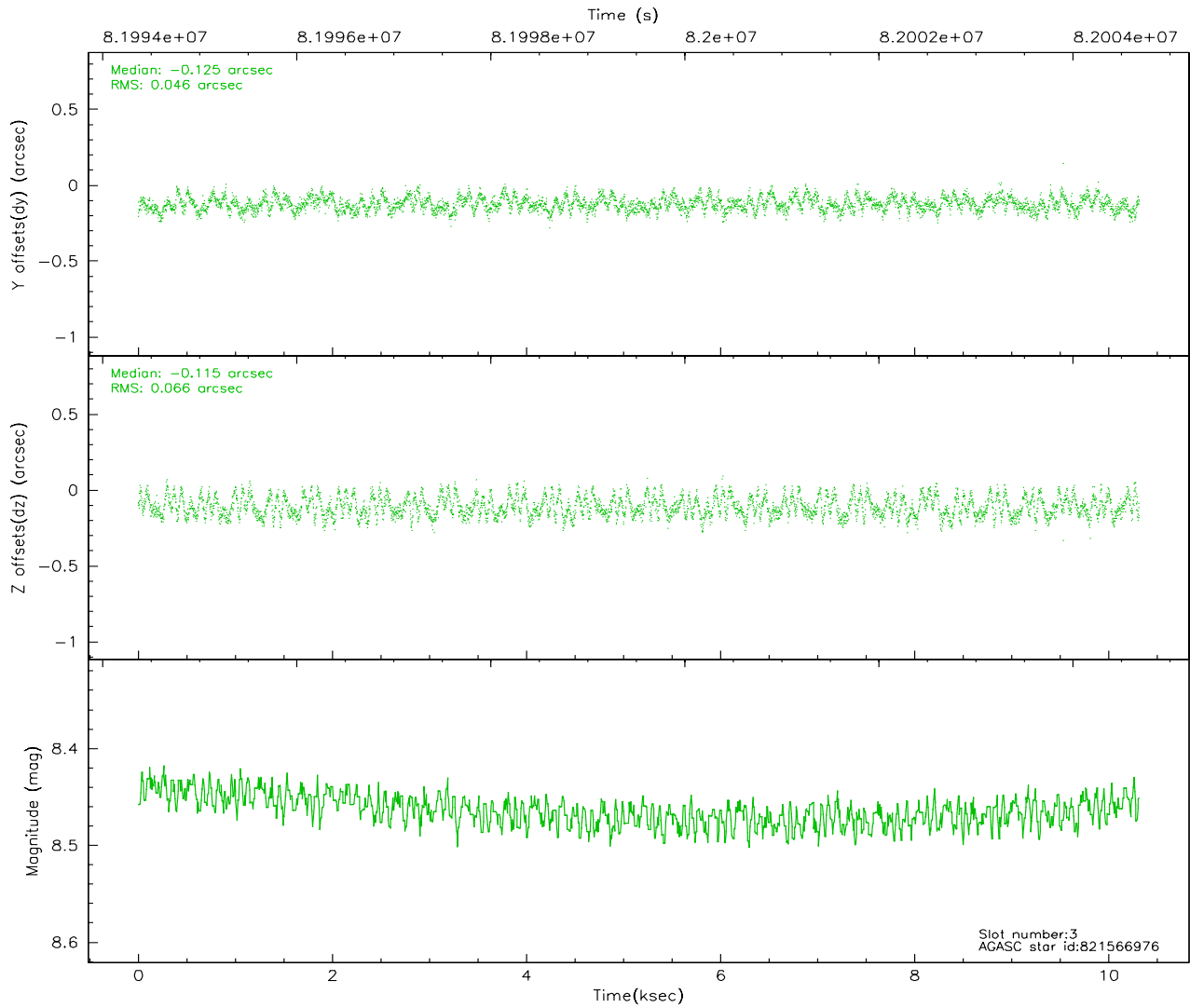
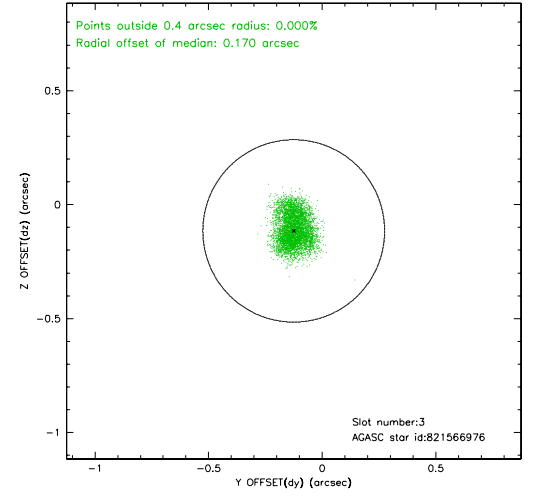
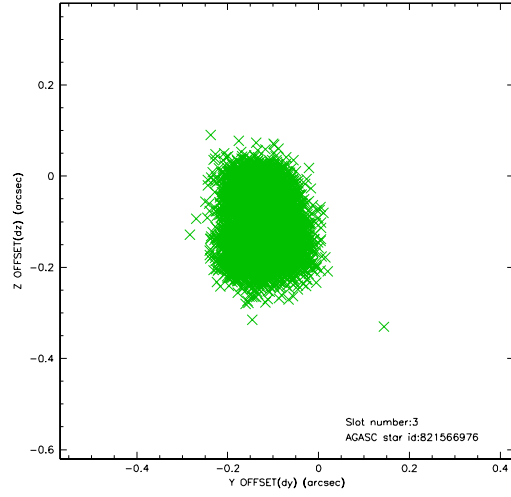


Slot Statistics

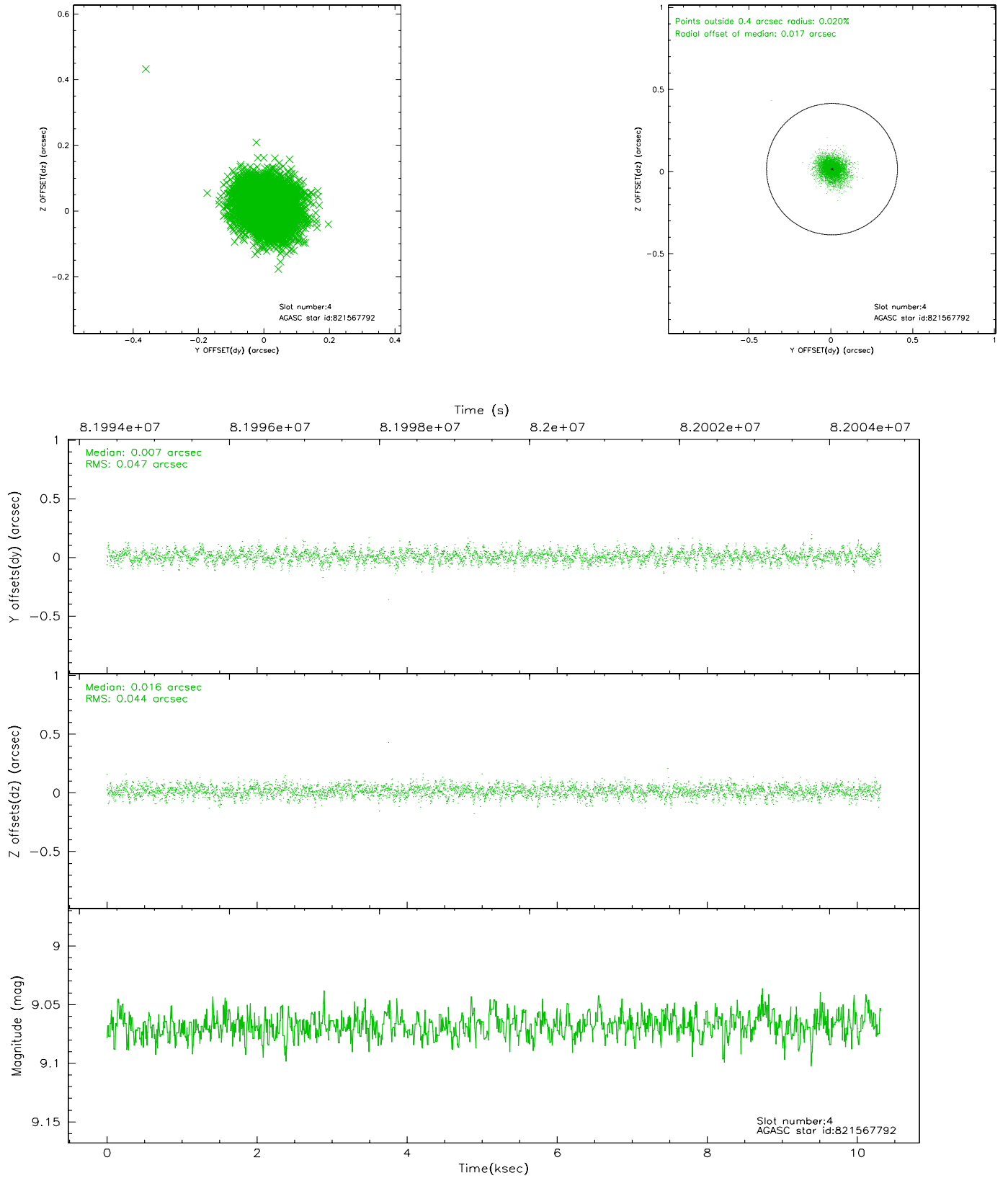
slot	status	id	mag	n_pts	med_dy	med_dz	dr1	dr2	ra	dec	mean_y	mean_z
0	FID	ACIS-I-2	7.15	2517	-0.019	0.003	0.010	0.018	0.000000	0.000000	-755.21	-834.50
1	FID	ACIS-I-4	7.19	2516	-0.074	0.020	0.006	0.011	0.000000	0.000000	2158.57	1071.43
2	FID	ACIS-I-5	7.23	2516	-0.009	0.046	0.010	0.016	0.000000	0.000000	-1808.37	1069.89
3	GUIDE	821566976	8.46	5031	-0.125	-0.115	0.088	0.134	272.948338	-16.893938	-639.44	-2369.77
4	GUIDE	821567792	9.07	5032	0.007	0.016	0.067	0.112	273.058733	-17.376535	1050.90	-1817.24
5	GUIDE	821571088	9.38	5033	0.202	-0.064	0.071	0.116	273.658262	-17.362946	798.91	227.75
6	GUIDE	821703096	9.30	5034	0.029	0.138	0.099	0.155	274.181701	-17.480385	1046.85	2058.61
7	GUIDE	821186248	9.26	5027	-0.110	0.020	0.104	0.162	274.245729	-16.758560	-1561.13	2032.45

2.4 Star Slots

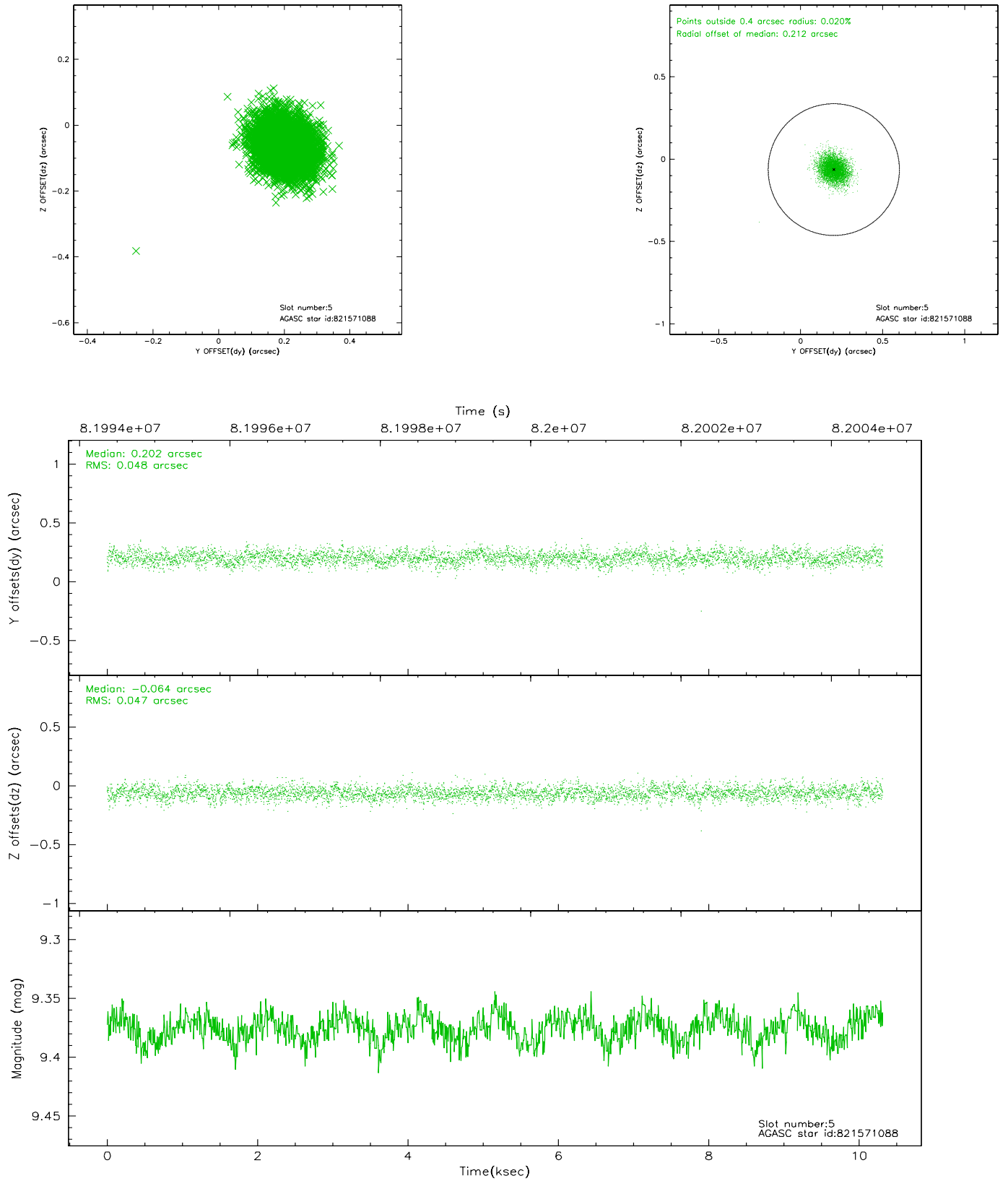
2.4.1 Slot 3



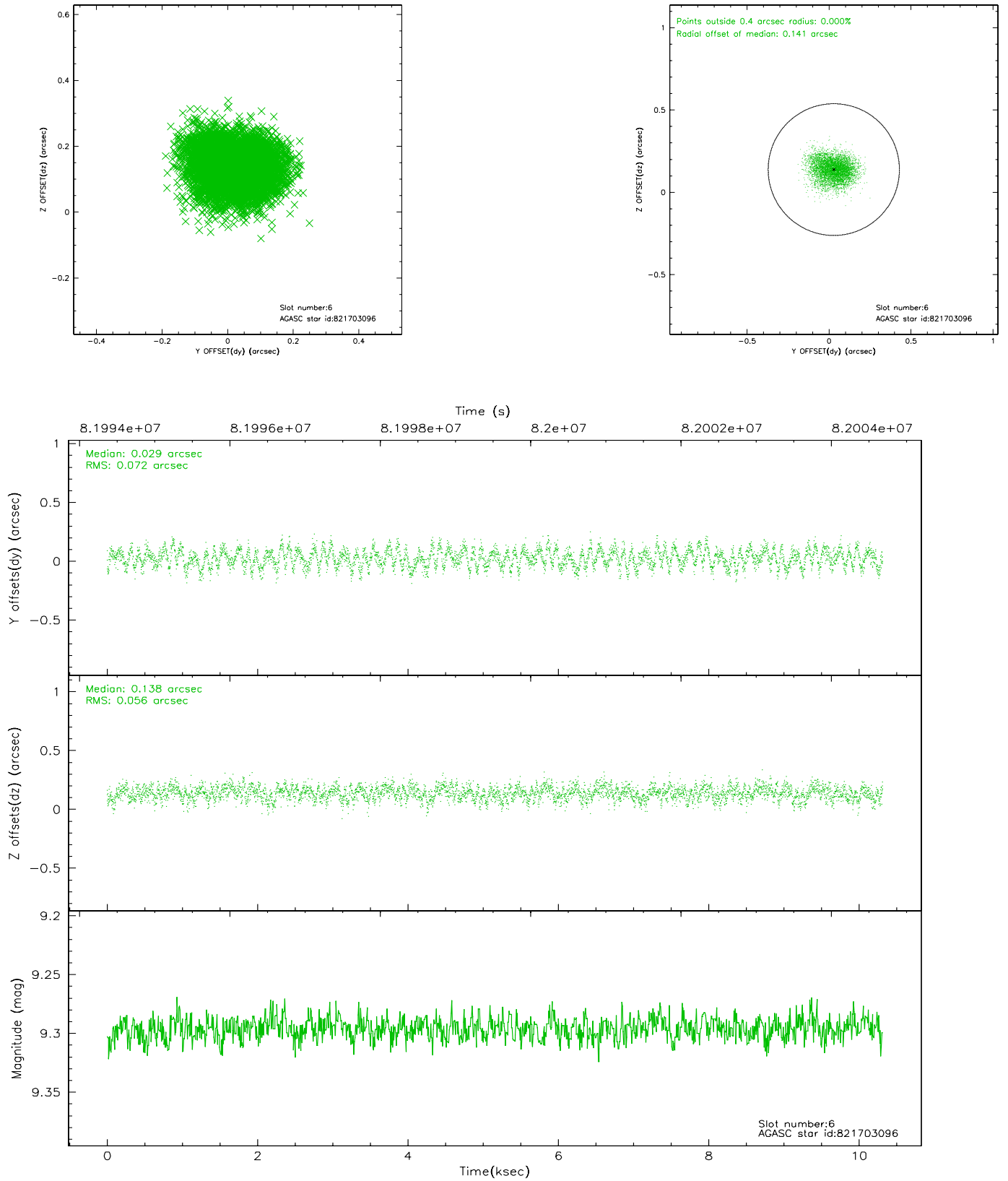
2.4.2 Slot 4



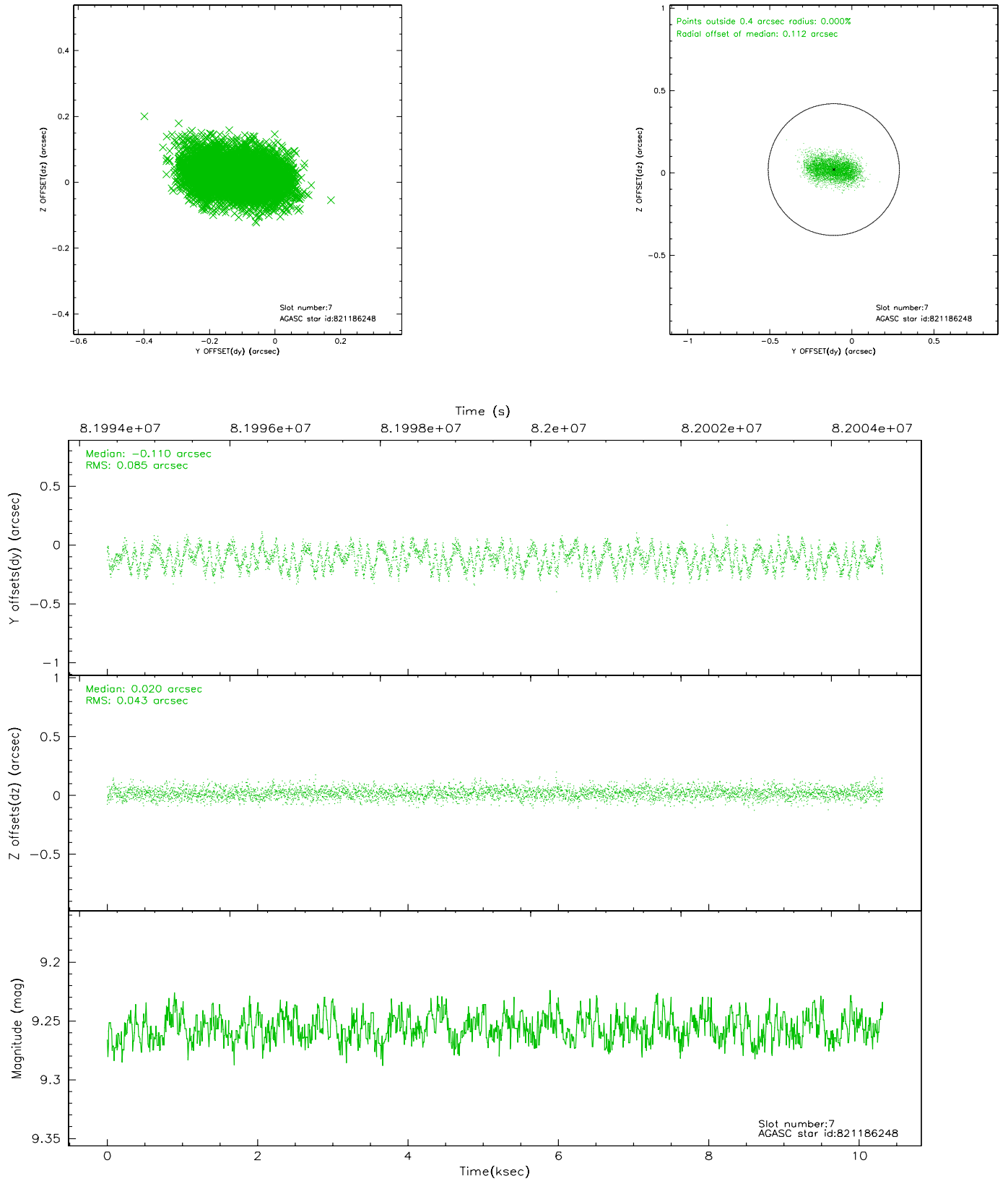
2.4.3 Slot 5



2.4.4 Slot 6

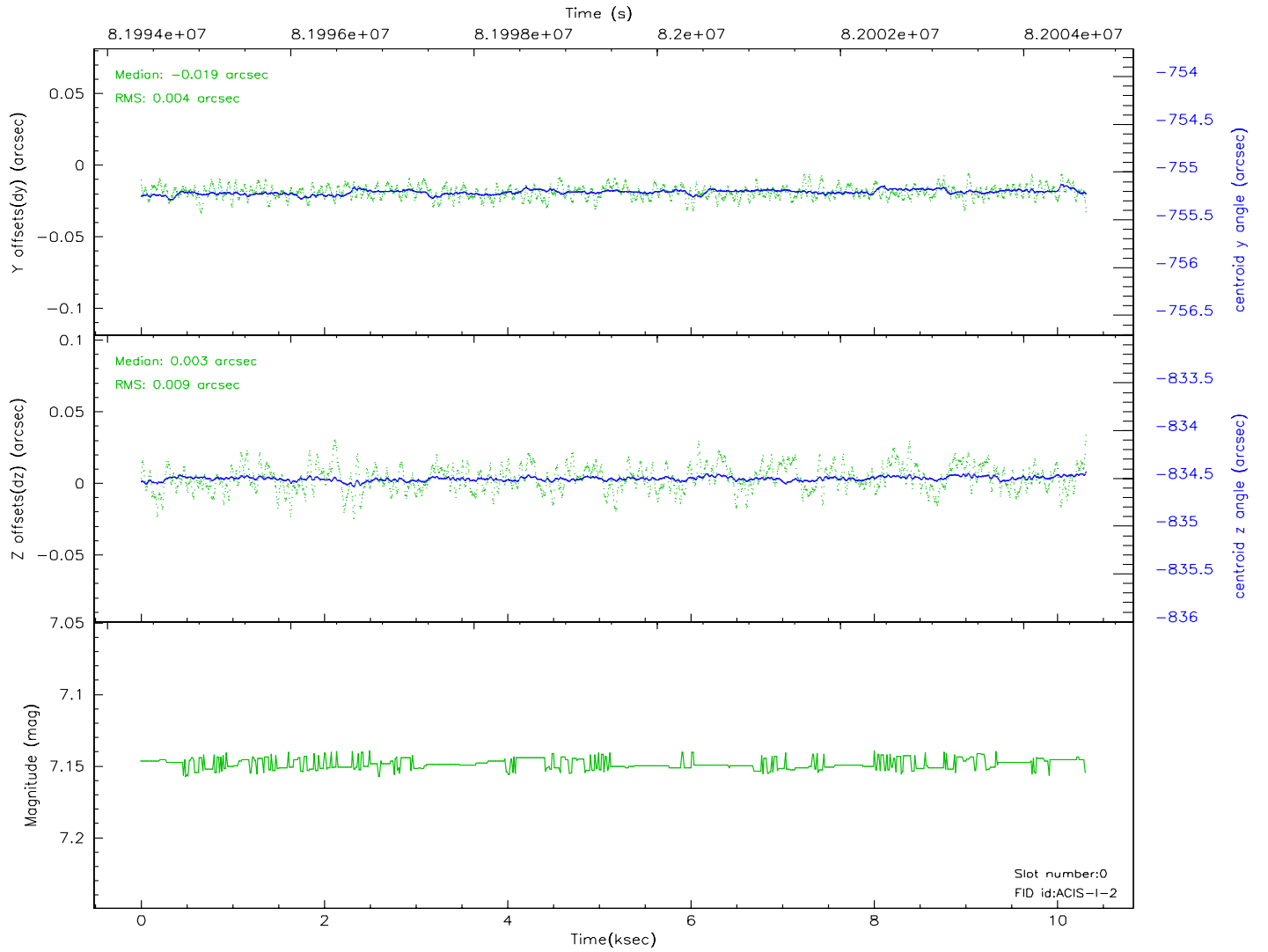
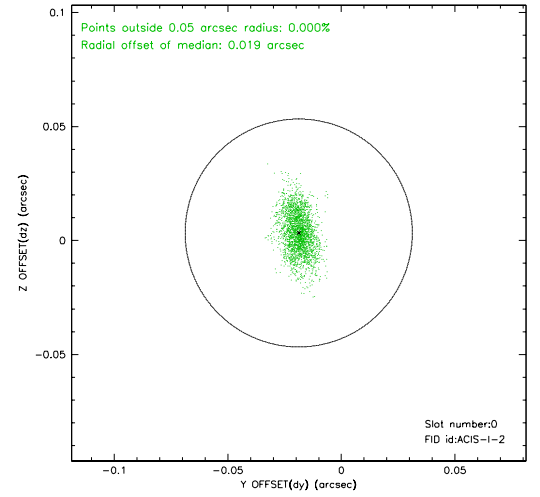
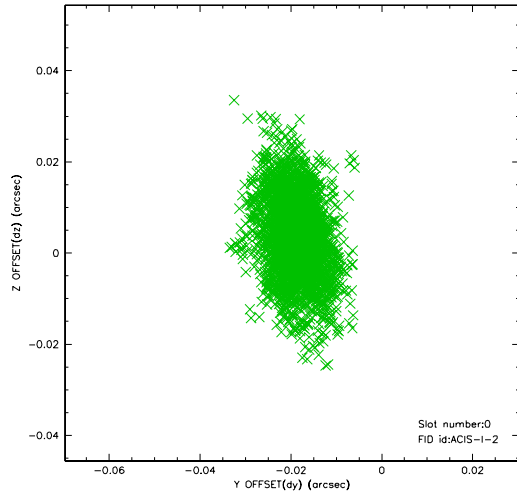


2.4.5 Slot 7

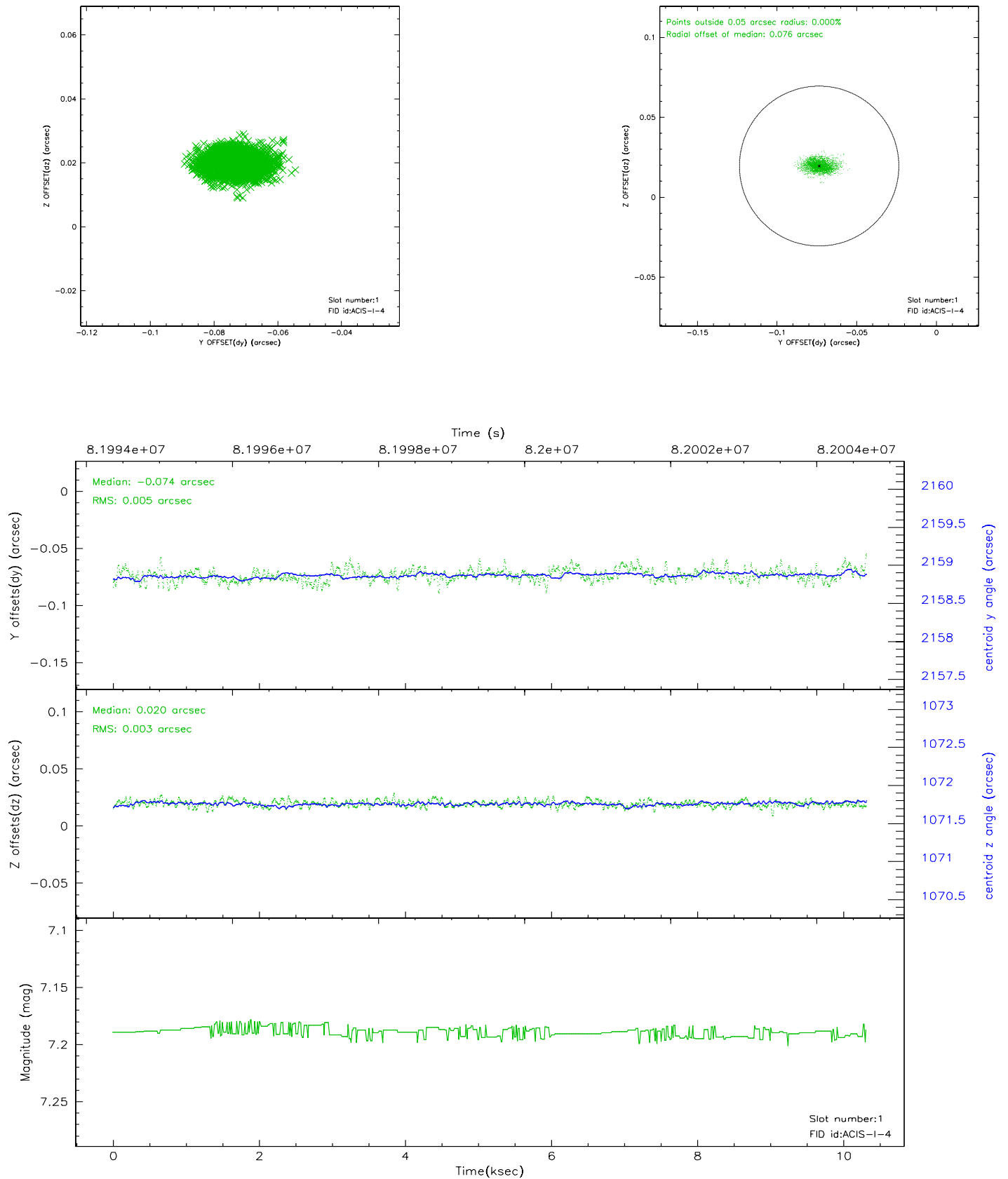


2.5 FID Slots

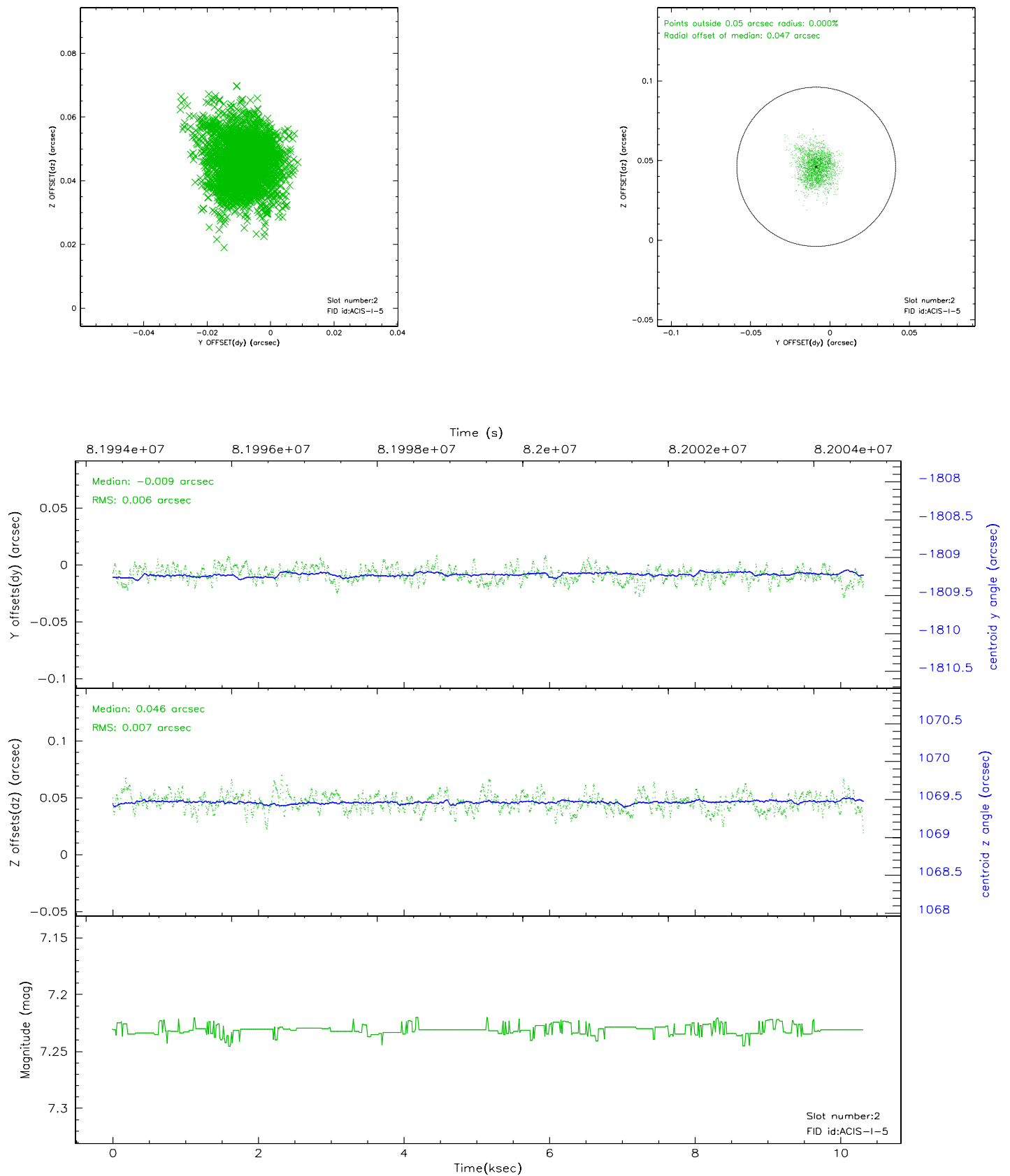
2.5.1 Slot 0



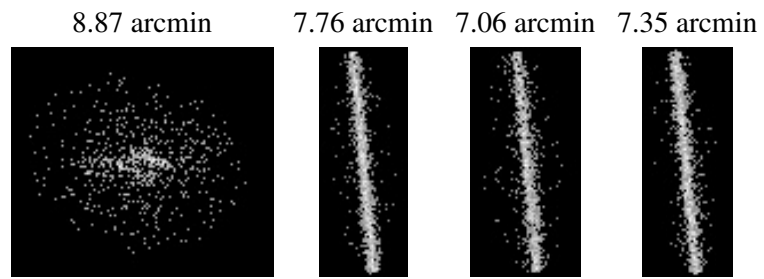
2.5.2 Slot 1



2.5.3 Slot 2



3 Point Sources



A Summary

A.1 Status

V&V Scientist	Beth Sundheim
V&V Date (YYYY-MM-DD)	2007.06.04
V&V Edition	1
V&V Disposition and Status	OK
V&V Charge Time	9.76

A.2 Comments