

V&V Reference Report

L2 ASCDS Version : 8.4.4

Observation 8620 - L2 Version 2
Chandra X-Ray Center

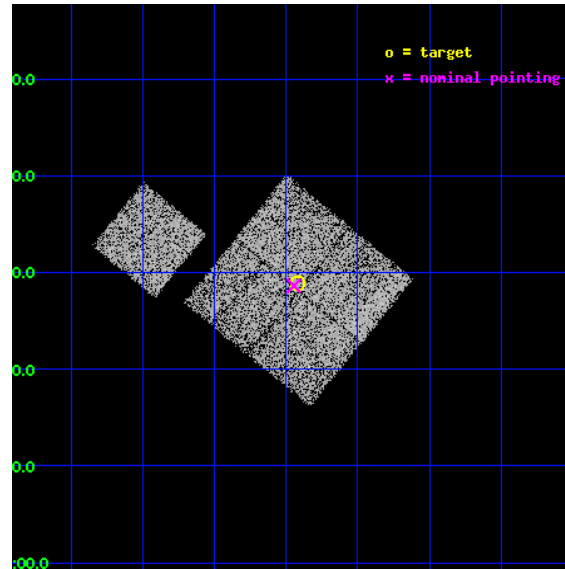
L2 Processing Date : May 5 2012

Contents

1	Front	2
2	OBI	3
2.1	OBI	3
2.1.1	Images	3
2.1.2	Bias	3
2.1.3	Parameters	4
2.1.4	Events	4
2.2	Compared Parameters	5
2.3	Aspect	6
2.4	Star Slots	9
2.4.1	Slot 3	9
2.4.2	Slot 4	10
2.4.3	Slot 5	11
2.4.4	Slot 6	12
2.4.5	Slot 7	13
2.5	FID Slots	14
2.5.1	Slot 0	14
2.5.2	Slot 1	15
2.5.3	Slot 2	16
A	Summary	17
A.1	Status	17
A.2	Comments	17

1 Front

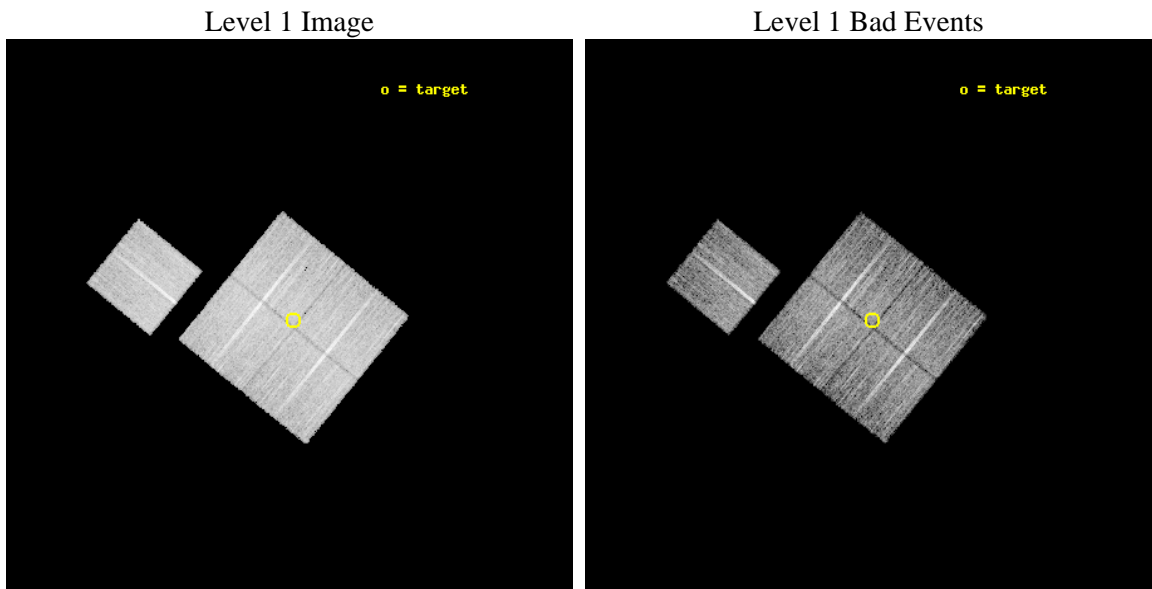
seq_num	900757	Sequence number
obs_id	8620	Observation id
title	Chandra Observations of the DEEP2 Fields	Proposal title
observer	Dr. Stephen Murray	Principal investigator
object	DEEP2 Field 4	Source name
dtcycle	0	
cycle	P	events from which exps? Prim/Second/Both
ra_targ	36.729697	Observer's specified target RA [deg]
dec_targ	0.481346	Observer's specified target Dec [deg]
ra_nom	36.736475766214	Nominal RA [deg]
dec_nom	0.47686817213649	Nominal Dec [deg]
roll_nom	309.23886045914	Nominal Roll [deg]
revision	2	Processing version of data
ontime	8771.781853497	Sum of GTIs [s]
livetime	8657.1720658892	Livetime [s]
ontime0	8768.5177630186	Sum of GTIs [s]
ontime1	8771.6997734904	Sum of GTIs [s]
ontime2	8771.7408334017	Sum of GTIs [s]
ontime3	8771.781853497	Sum of GTIs [s]
ontime6	8771.6176934838	Sum of GTIs [s]
l2events	29755	Number of level 2 events



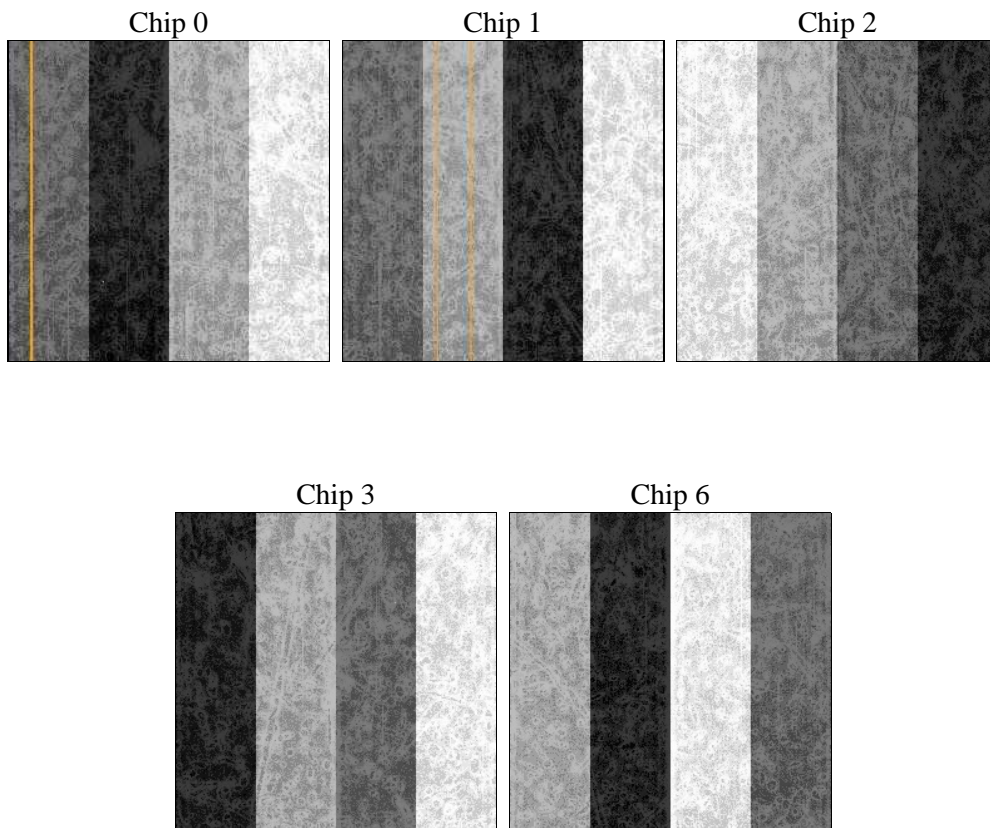
2 OBI

2.1 OBI

2.1.1 Images



2.1.2 Bias



2.1.3 Parameters

obi_num	0	Obi number	sched_exp_time	9000.000000	[s] Scheduled observation exposure time
ascdsver	8.4.4	Processing system revision	ontime	8771.781853497	Sum of GTIs [s]
caldsver	4.4.9	 	ontime0	8768.5177630186	Sum of GTIs [s]
date	2012-05-05T05:51:47	Date and time of file creation	ontime1	8771.6997734904	Sum of GTIs [s]
revision	2	Processing version of data	ontime2	8771.7408334017	Sum of GTIs [s]
			ontime3	8771.781853497	Sum of GTIs [s]
			ontime6	8771.6176934838	Sum of GTIs [s]
			l1events	350867	Number of level 1 events

2.1.4 Events

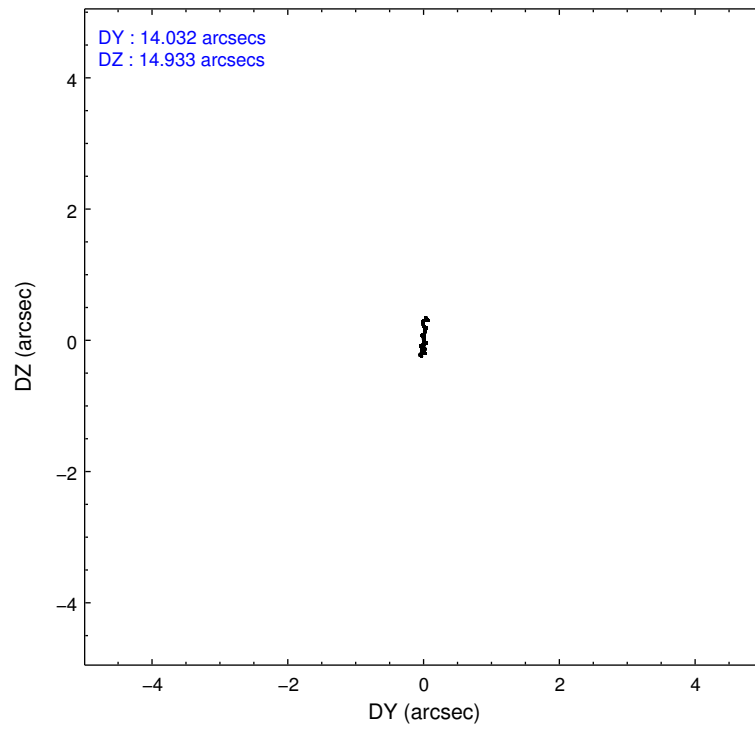
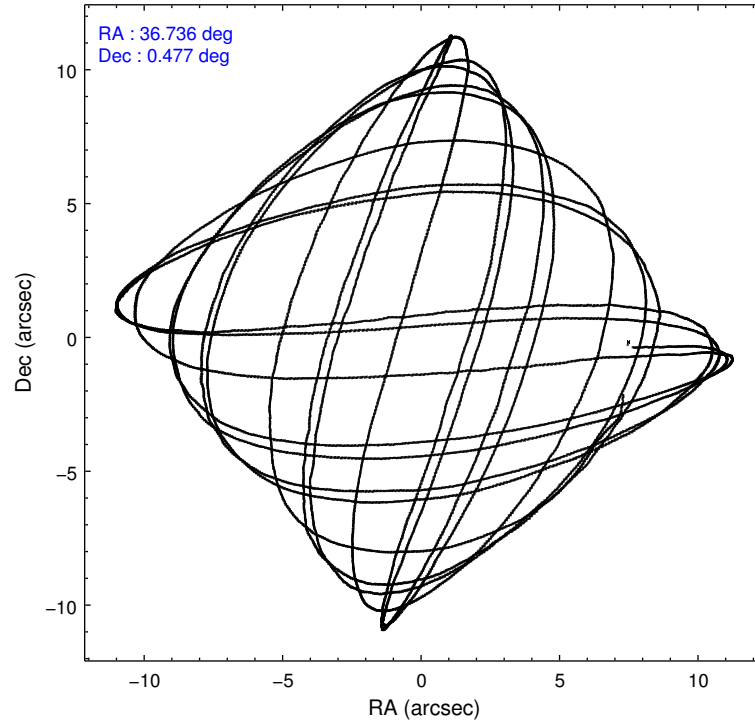
	ccd 0	ccd 1	ccd 2	ccd 3	ccd 6
level 1 events	67081	67706	75642	68494	71944
rejected events	59909	59733	68622	61913	64700
rejected %	89%	88%	90%	90%	89%

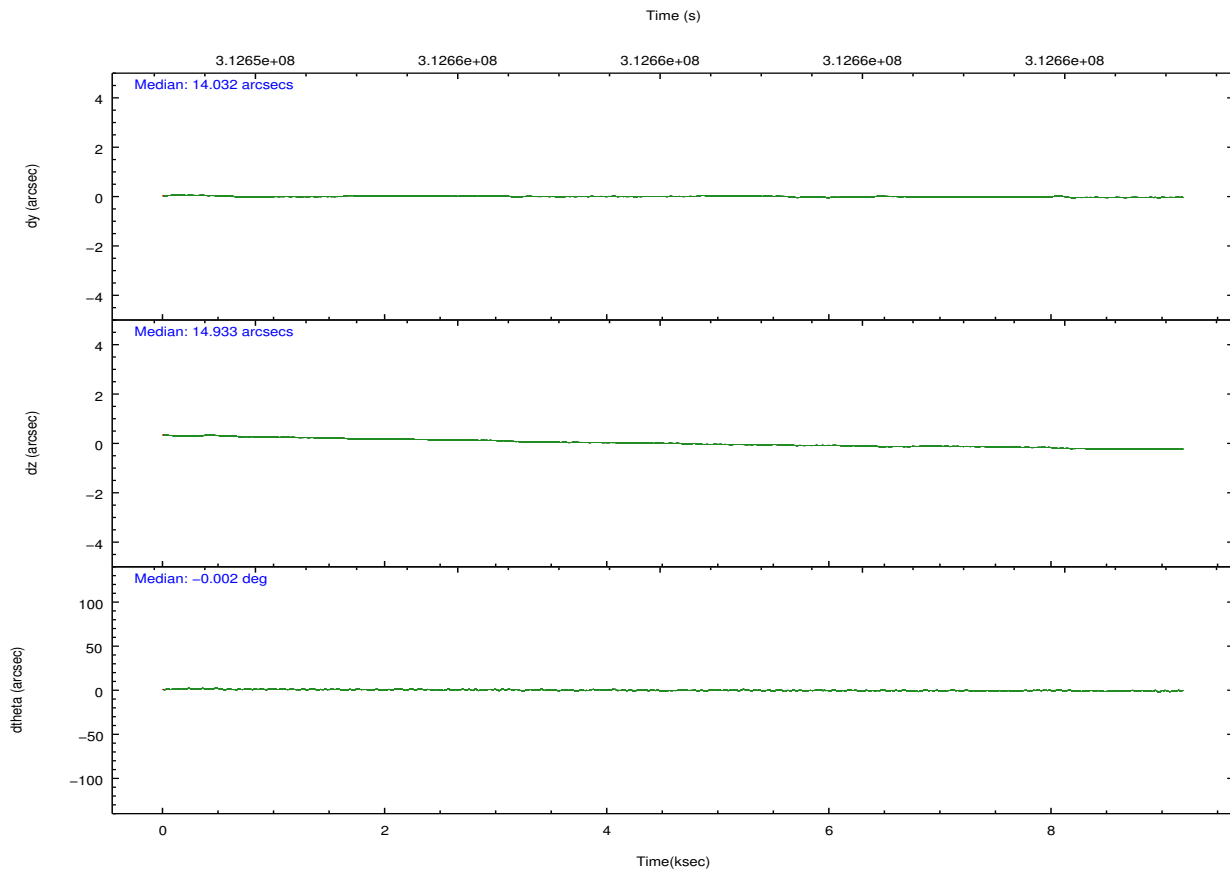
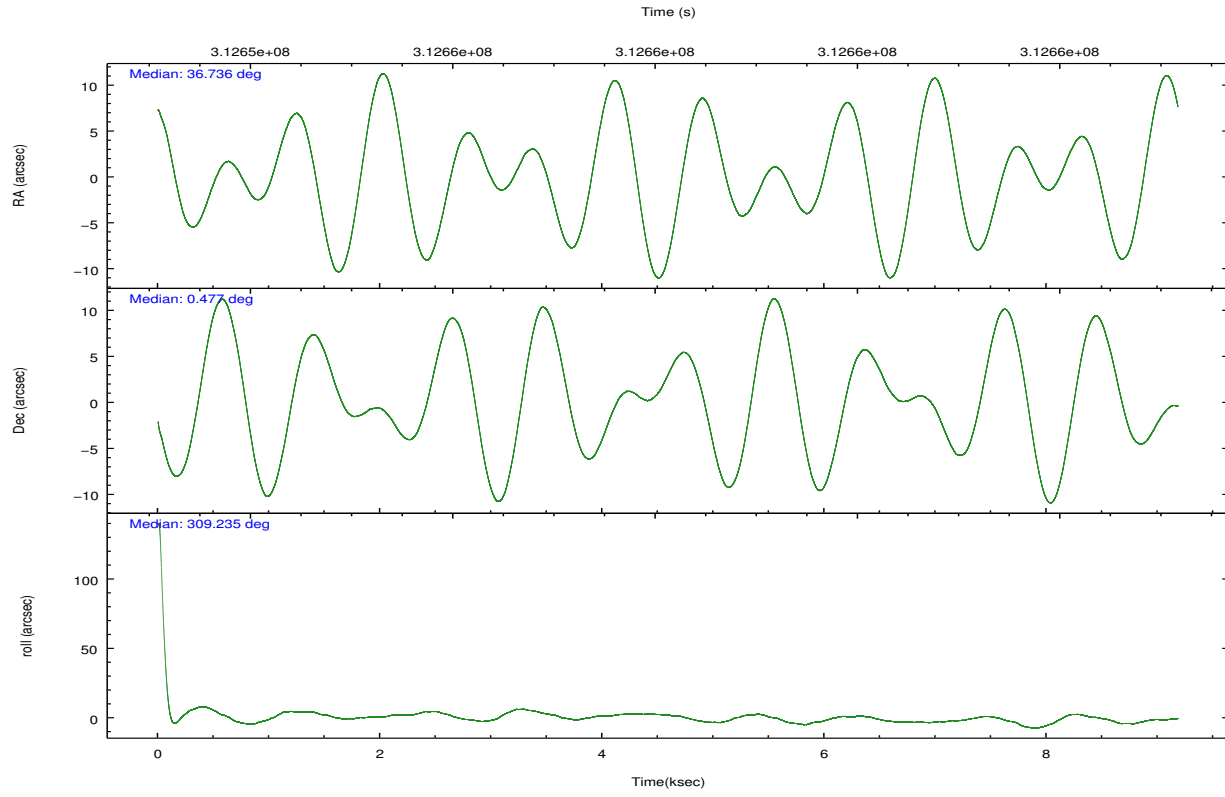
	ccd 0	ccd 1	ccd 2	ccd 3	ccd 6
grade 0 events	2476	2866	2472	2277	2474
	3%	4%	3%	3%	3%
grade 1 events	39	46	40	34	29
	0%	0%	0%	0%	0%
grade 2 events	1768	1772	1734	1391	1621
	2%	2%	2%	2%	2%
grade 3 events	723	827	744	783	785
	1%	1%	0%	1%	1%
grade 4 events	778	893	762	743	832
	1%	1%	1%	1%	1%
grade 5 events	2553	2753	2374	2875	2795
	3%	4%	3%	4%	3%
grade 6 events	1432	1618	1312	1389	1536
	2%	2%	1%	2%	2%
grade 7 events	57312	56931	66204	59002	61872
	85%	84%	87%	86%	86%

2.2 Compared Parameters

Parameter	Planned	Actual	Parameter	Planned	Actual
Instrument	ACIS	ACIS	Obspar format version number	7	7
Detector	ACIS-01236	ACIS-01236	Obspar file type	PREDICTED	ACTUAL
Grating	NONE	NONE	Obspar update status	NONE	UPDATED
Data mode	VFAINT	VFAINT	CCD I0 on	Y	Y
Observation mode	POINTING	POINTING	CCD I1 on	Y	Y
[deg] Pointing RA	36.710688	36.73647576621363	CCD I2 on	Y	Y
[deg] Pointing Dec	0.486532	0.4768681721364944	CCD I3 on	Y	Y
[deg] Pointing Roll	309.030164	309.238860459135	CCD S0 on	N	N
[mm] SIM focus pos	-0.782348	-0.7809083437167272	CCD S1 on	N	N
[mm] SIM defocus	0	0.001439871863259334	CCD S2 on	O1	Y
[mm] SIM translation stage pos	-233.592463	-233.5874344608287	CCD S3 on	N	N
[mm] SIM translation stage offset	0	-0.005018542100998502	CCD S4 on	N	N
[s] Observation start time (MET)	312653725.184000	312653349.47614	CCD S5 on	N	N
Observation start date	2007-11-28T16:14:20	2007-11-28T16:09:09	Number of optional ACIS chips dropped	0	0
[s] Observation end time (MET)	312662725.184000	312663549.25163	On-chip summing requested	N	N
Observation end date	2007-11-28T18:44:20	2007-11-28T18:59:09	Subarray requested	NONE	NONE
Read mode	TIMED	TIMED	Alternating exposures requested	N	N
			[s] Primary exposure time	0.000000	3.1

2.3 Aspect



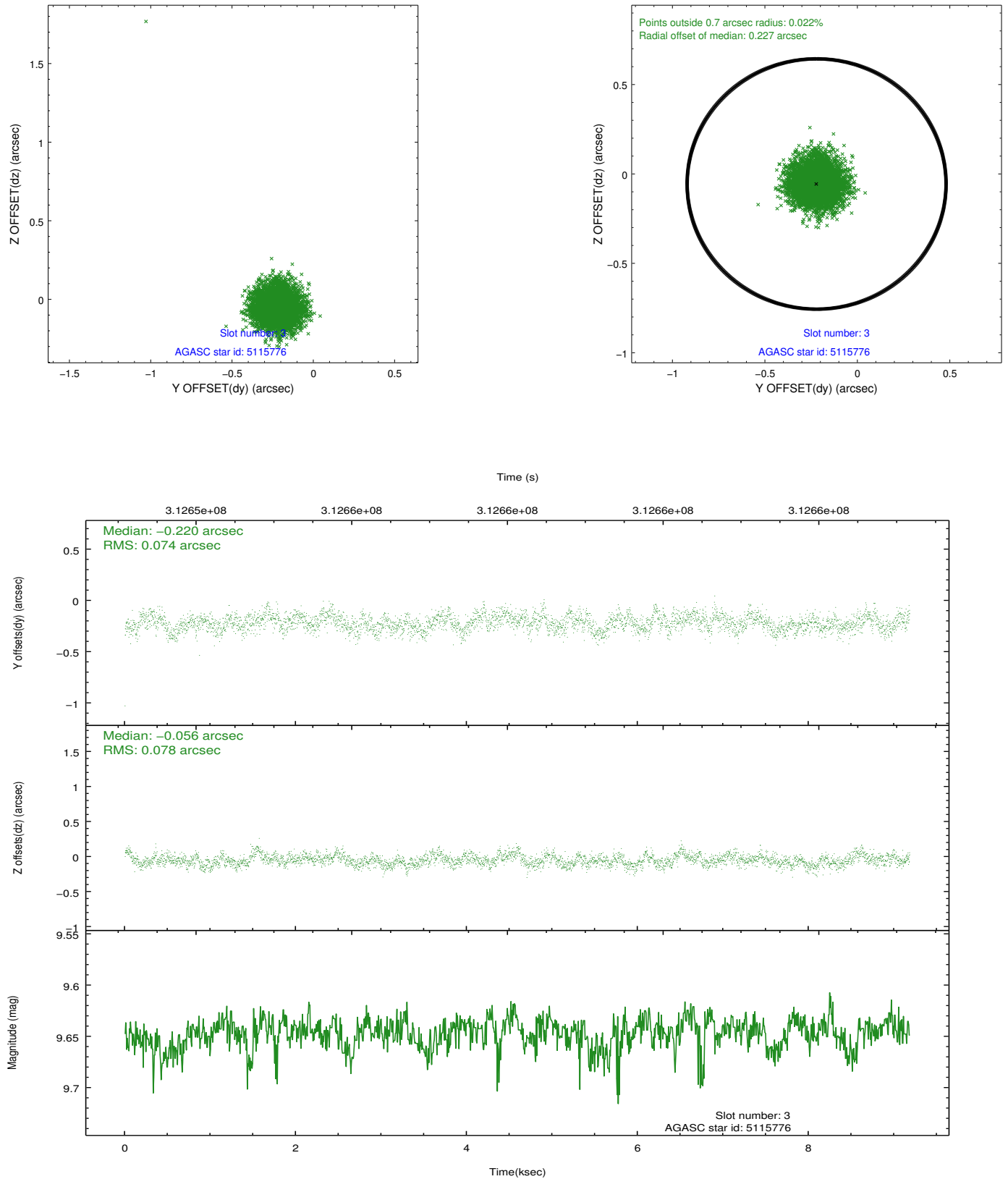


Slot Statistics

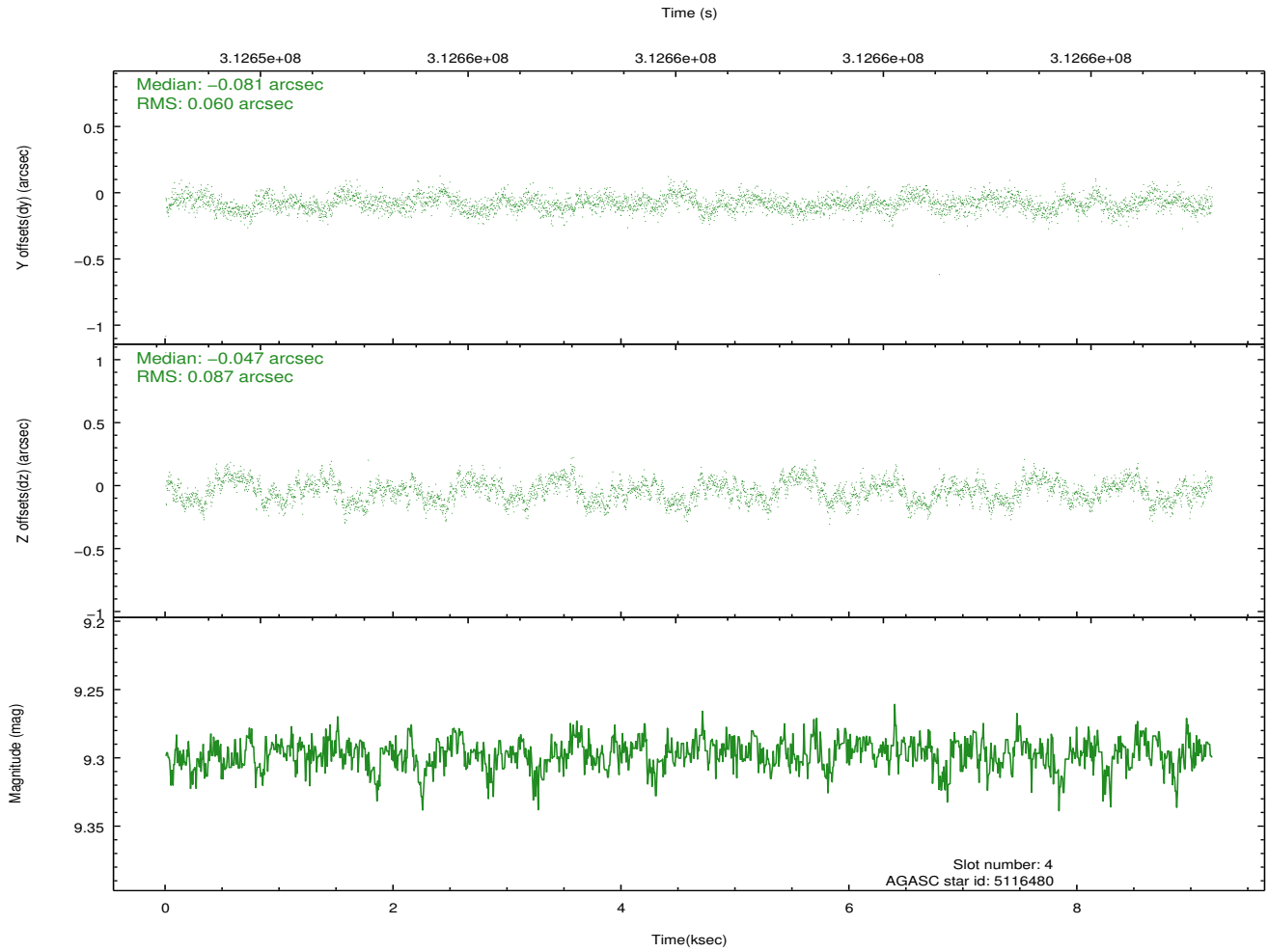
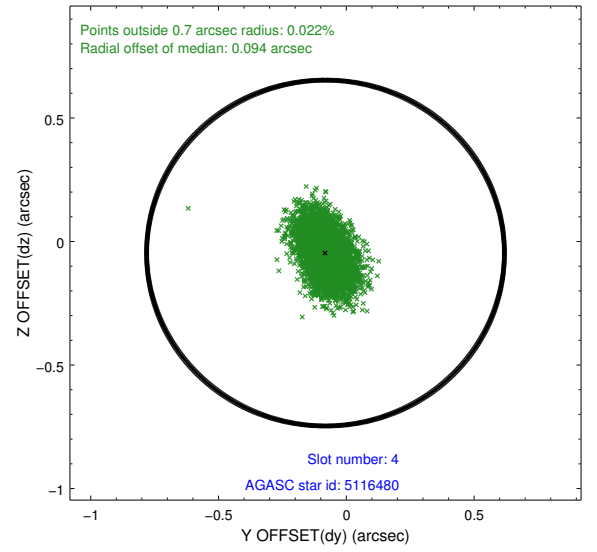
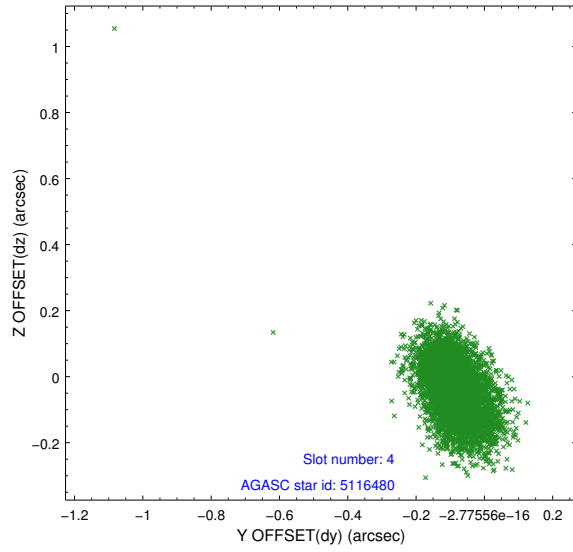
slot	status	id	mag	n_pts	med_dy	med_dz	dr1	dr2	ra	dec	mean_y	mean_z
0	FID	ACIS-I-1	7.23	2240	0.033	-0.013	0.012	0.021	0.000000	0.000000	925.49	-838.56
1	FID	ACIS-I-5	7.23	2240	-0.217	0.034	0.006	0.011	0.000000	0.000000	-1822.54	1058.68
2	FID	ACIS-I-6	7.24	2240	0.093	0.051	0.010	0.017	0.000000	0.000000	390.45	1703.87
3	GUIDE	5115776	9.65	4472	-0.220	-0.056	0.112	0.177	36.405971	0.913022	-1883.54	114.83
4	GUIDE	5116480	9.30	4477	-0.081	-0.047	0.111	0.179	36.624607	0.603451	-522.23	24.65
5	GUIDE	5119056	9.53	4459	0.081	0.032	0.143	0.223	36.799344	0.156256	1124.74	-500.56
6	GUIDE	5119688	10.10	4472	0.067	-0.050	0.197	0.318	37.358261	0.292194	2012.48	1370.43
7	GUIDE	5120248	10.14	4467	0.142	0.128	0.140	0.233	37.443007	0.415444	1859.93	1887.76

2.4 Star Slots

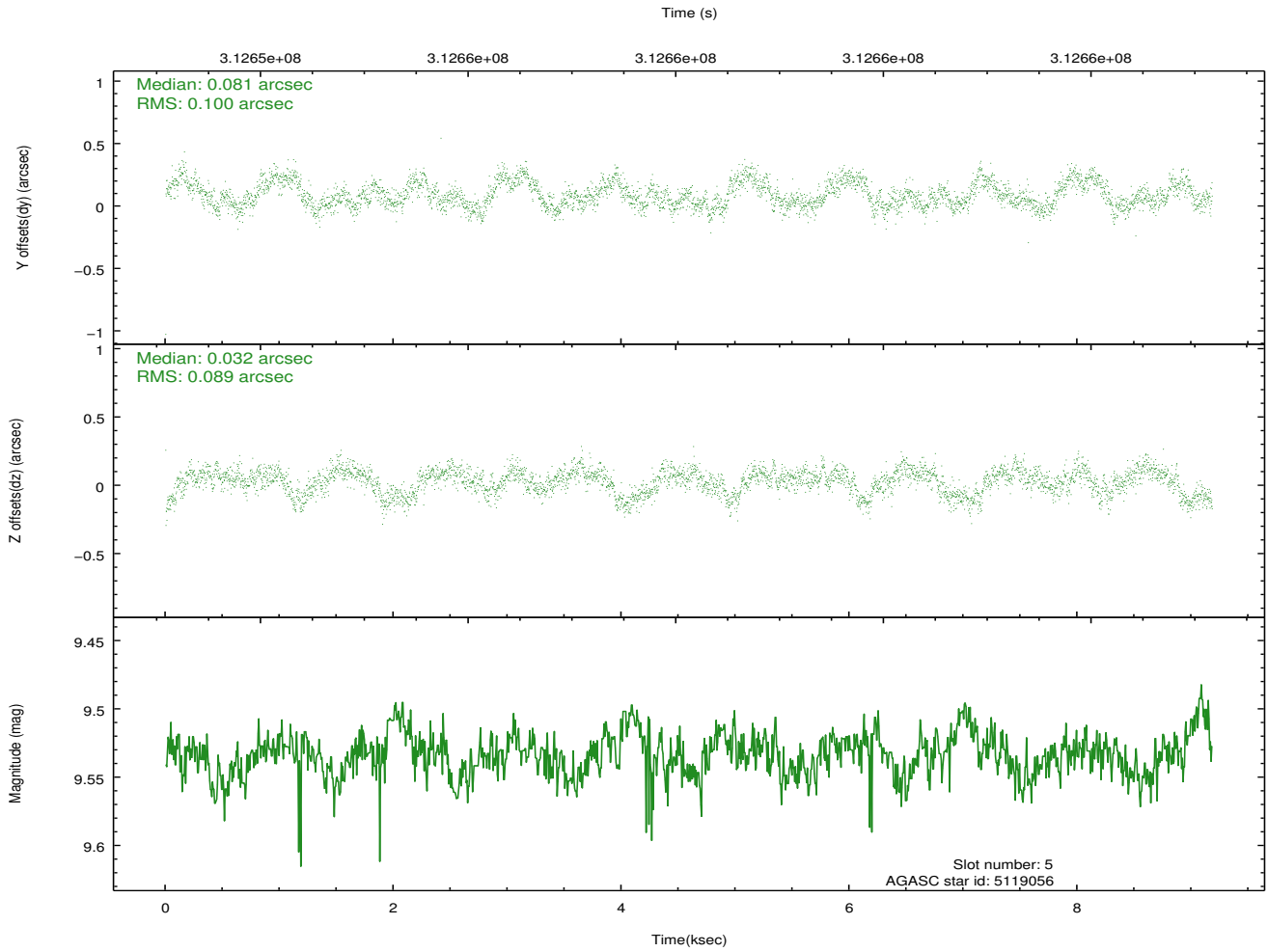
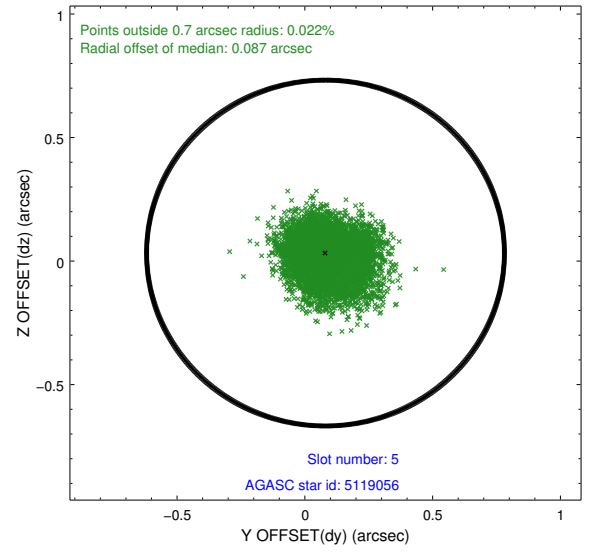
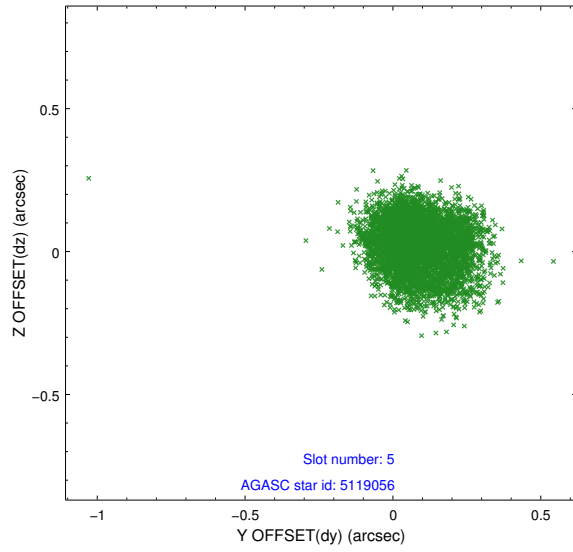
2.4.1 Slot 3



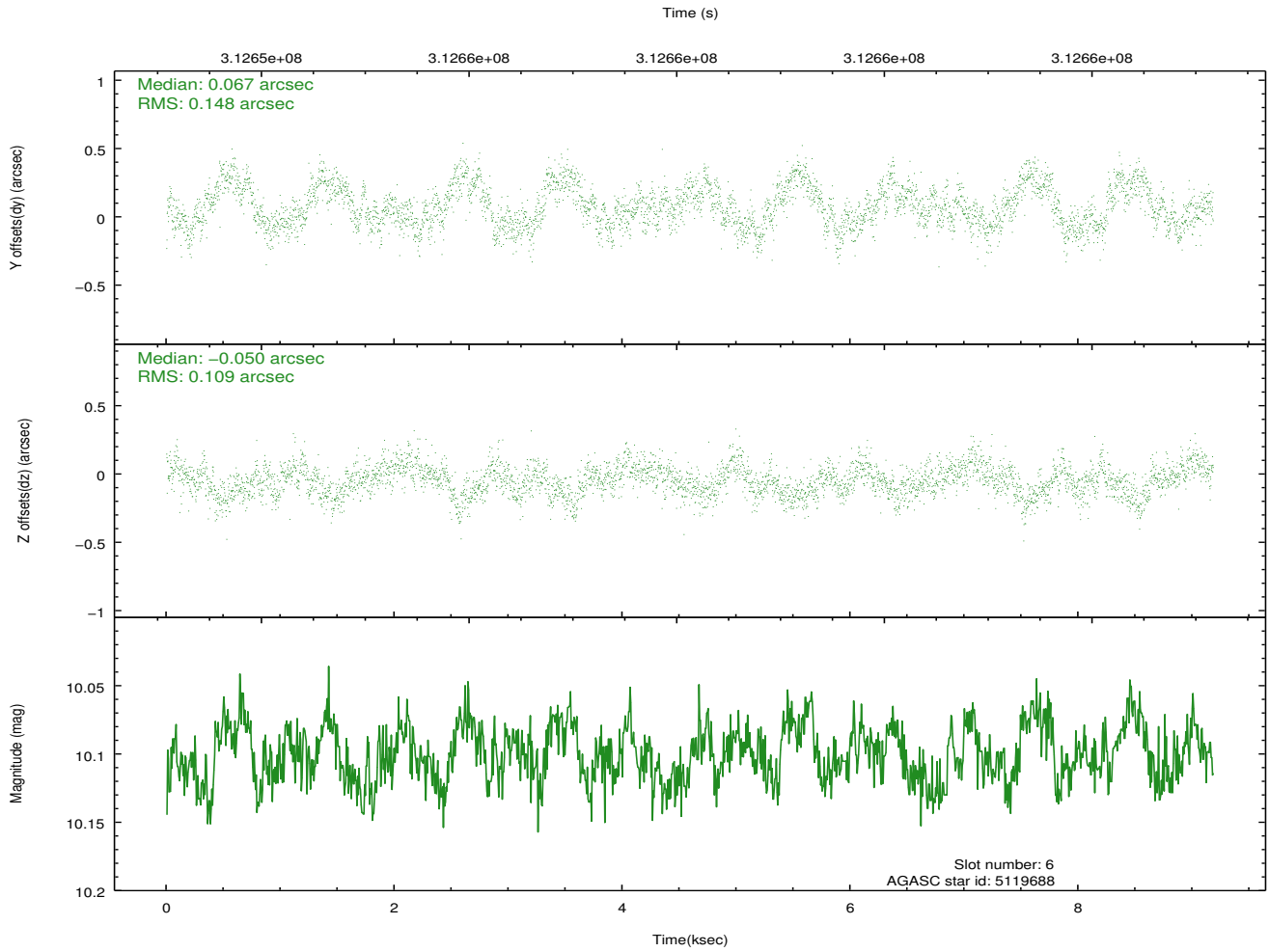
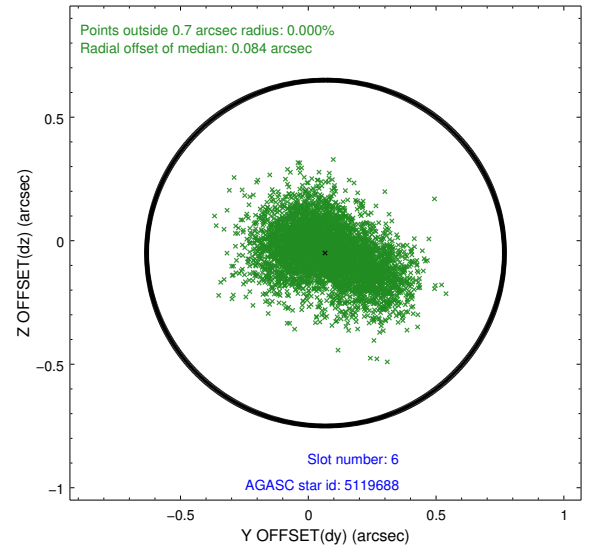
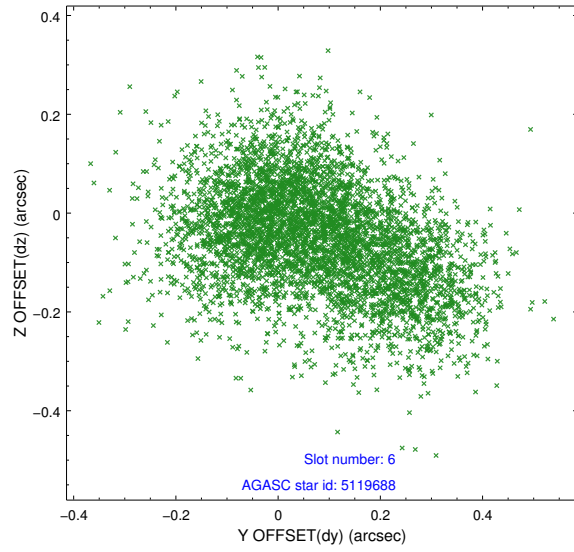
2.4.2 Slot 4



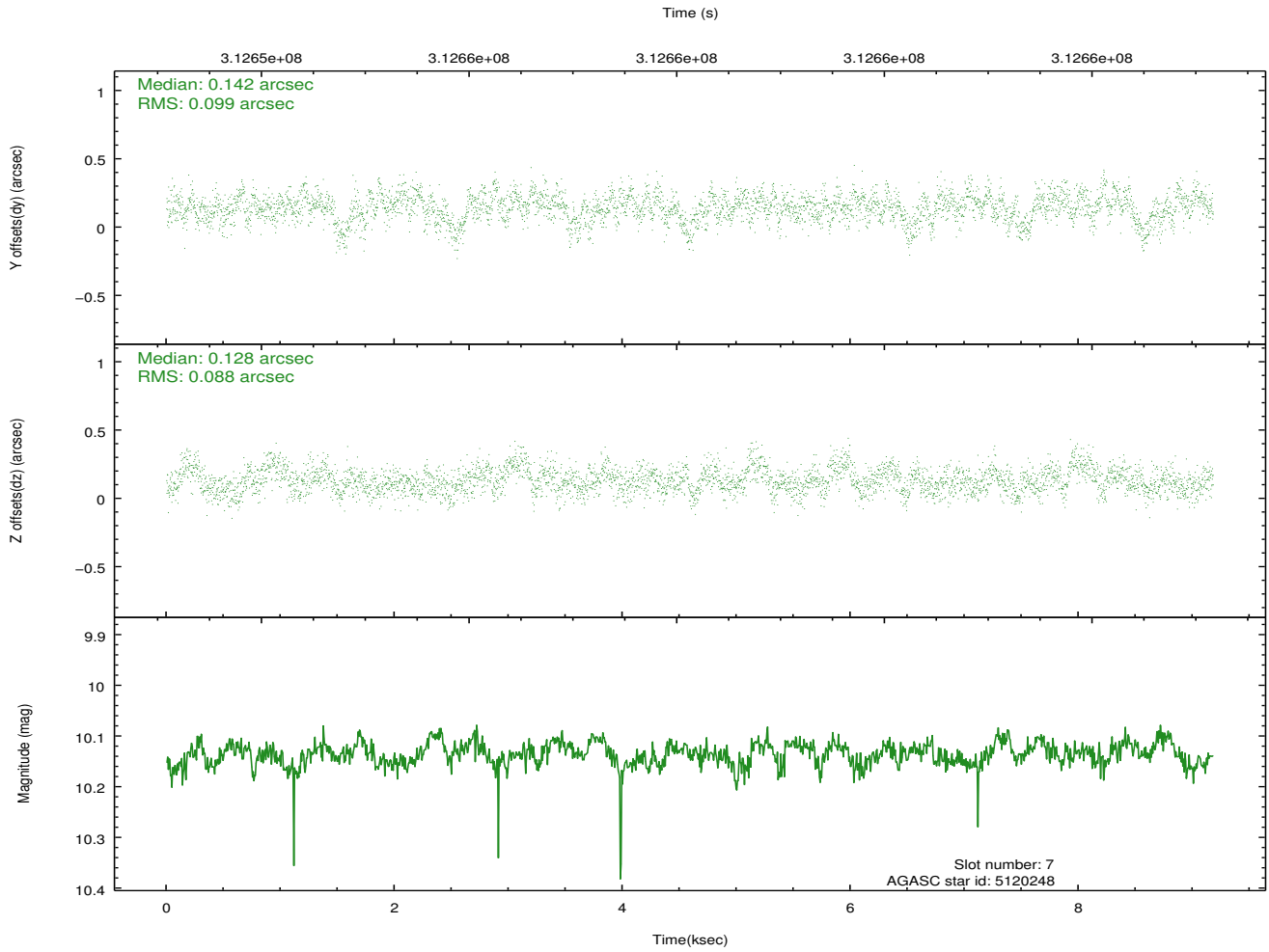
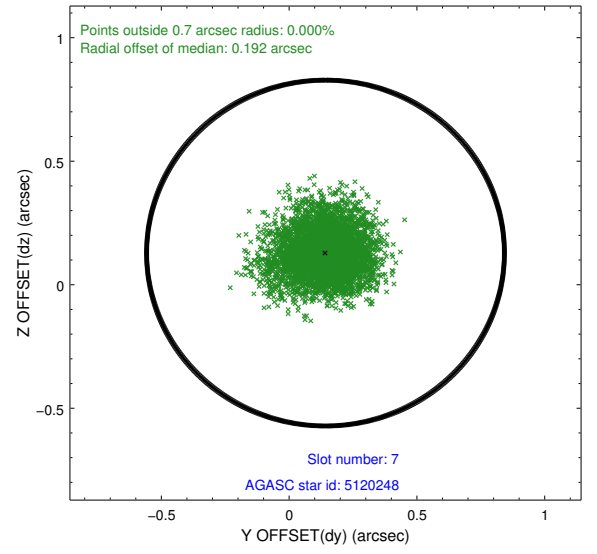
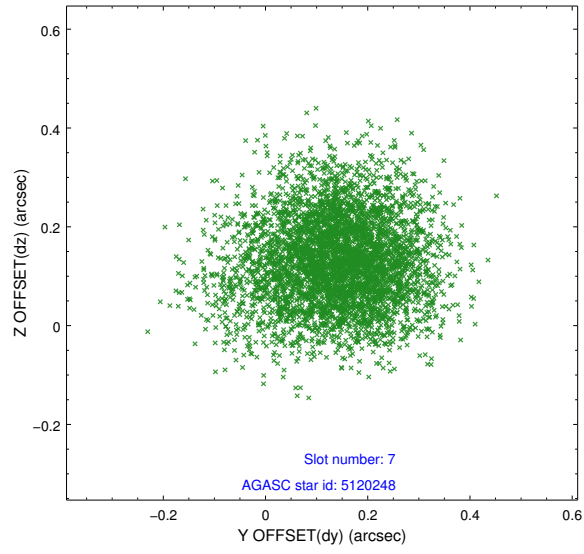
2.4.3 Slot 5



2.4.4 Slot 6

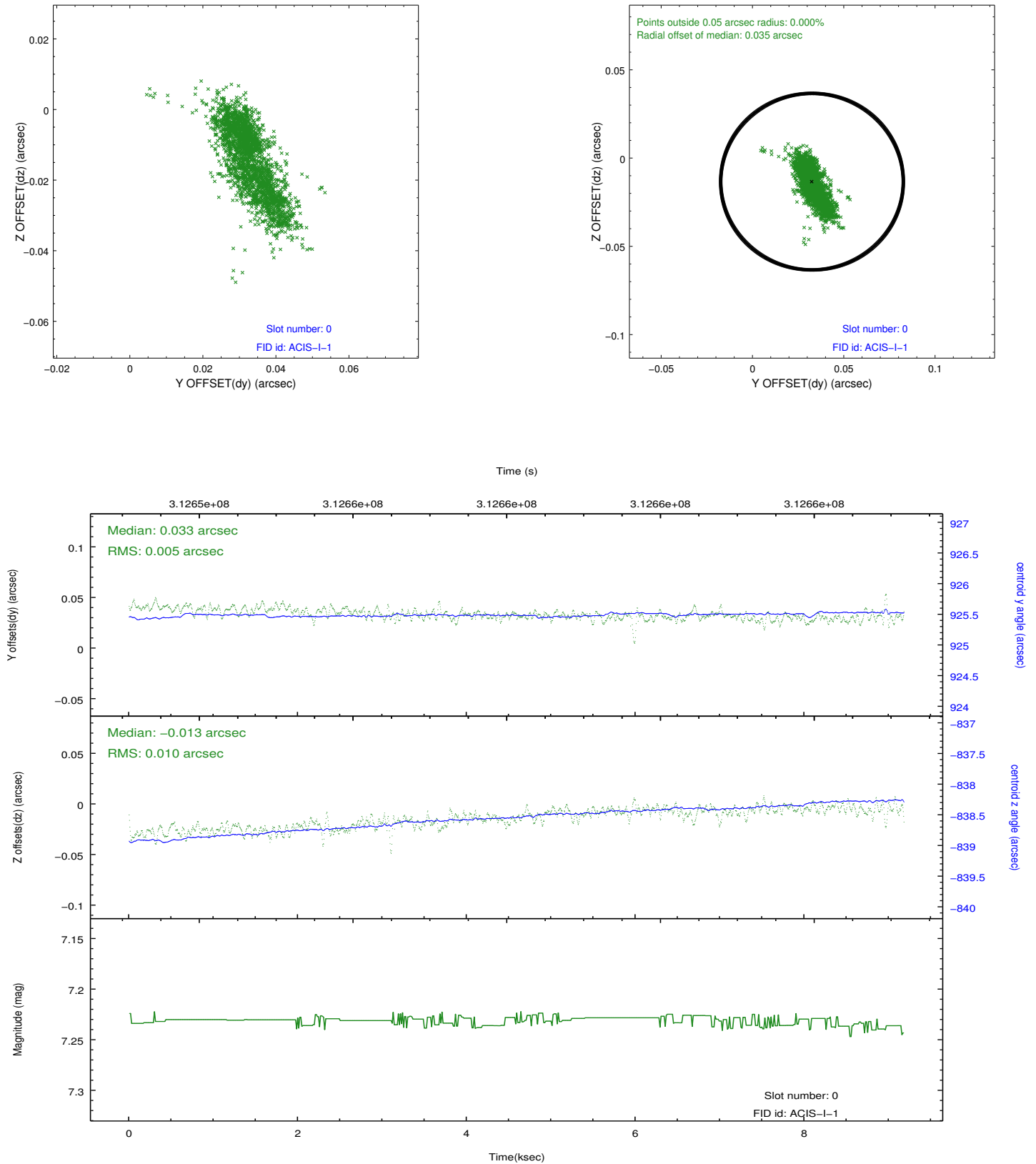


2.4.5 Slot 7

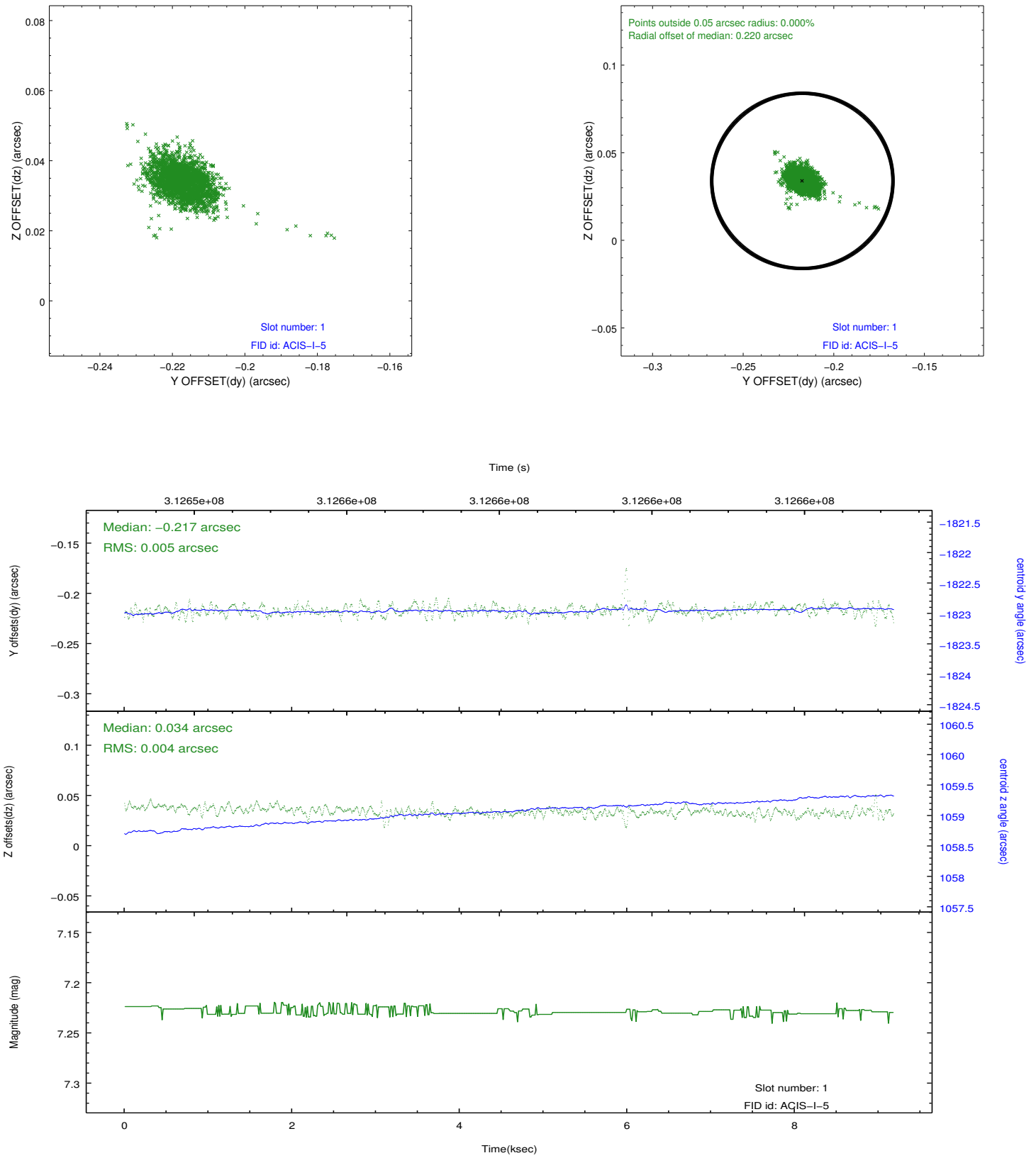


2.5 FID Slots

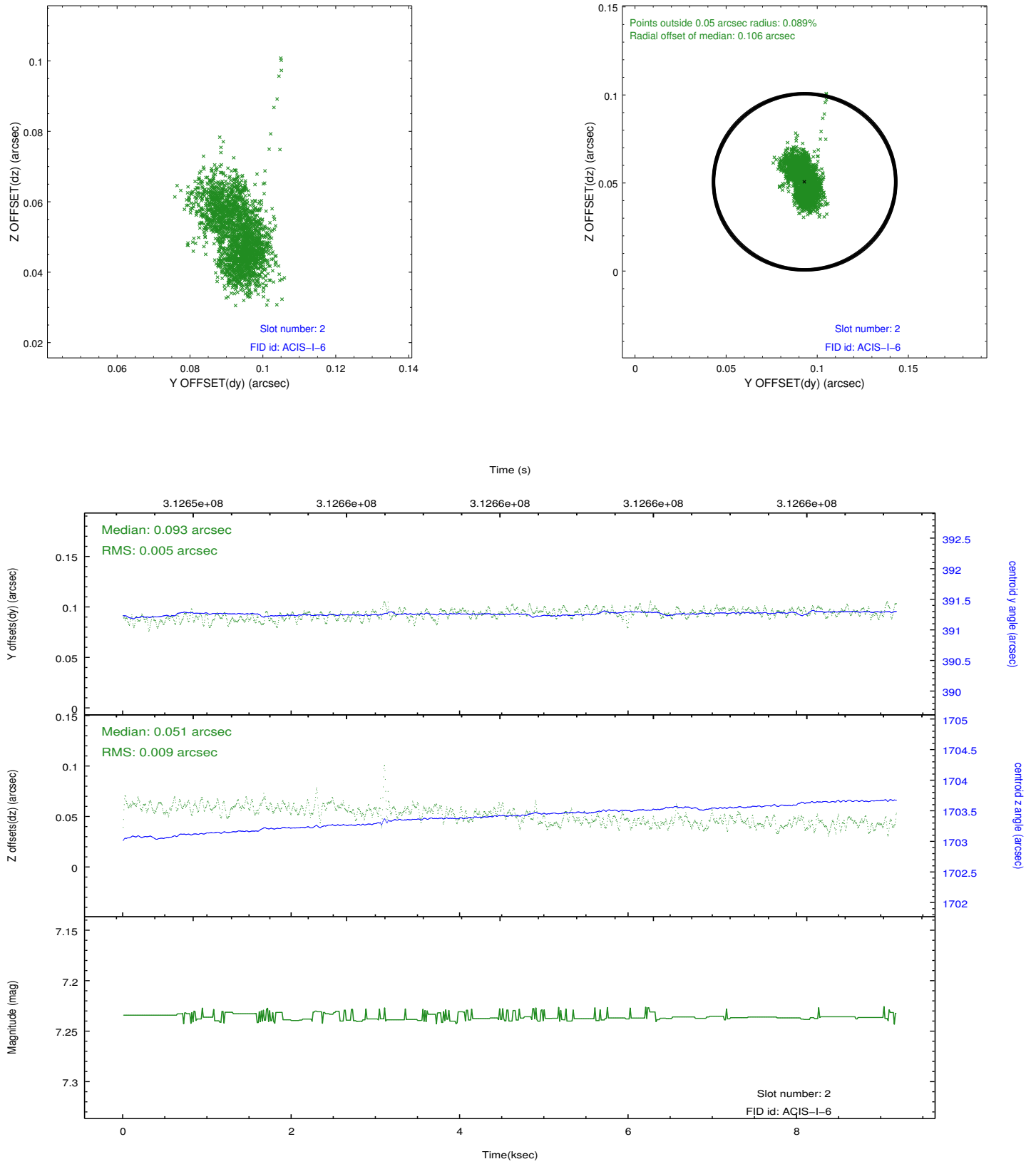
2.5.1 Slot 0



2.5.2 Slot 1



2.5.3 Slot 2



A Summary

A.1 Status

V&V Scientist	Jen Lauer
V&V Date (YYYY-MM-DD)	2012.05.07
V&V Edition	1
V&V Disposition and Status	OK
V&V Charge Time	8.77300006

A.2 Comments