

V&V Reference Report

L2 ASCDS Version : 8.4.3.1

Observation 8500 - L2 Version 3
Chandra X-Ray Center

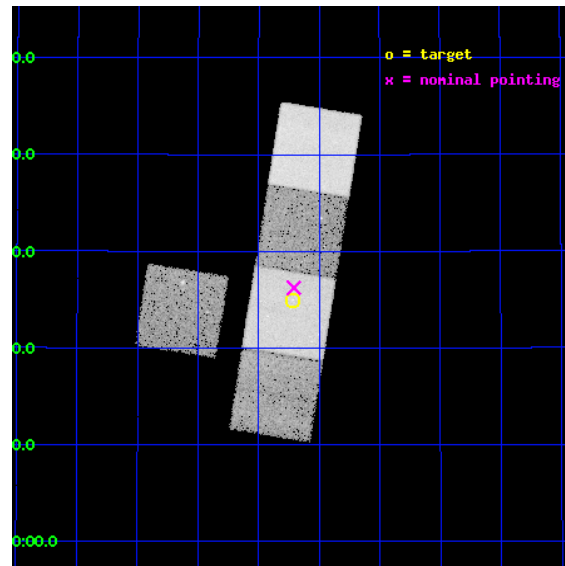
L2 Processing Date : Apr 16 2012

Contents

1	Front	2
2	OBI	3
2.1	OBI	3
2.1.1	Images	3
2.1.2	Bias	3
2.1.3	Parameters	4
2.1.4	Events	4
2.2	Compared Parameters	5
2.3	Aspect	6
2.4	Star Slots	9
2.4.1	Slot 3	9
2.4.2	Slot 4	10
2.4.3	Slot 5	11
2.4.4	Slot 6	12
2.4.5	Slot 7	13
2.5	FID Slots	14
2.5.1	Slot 0	14
2.5.2	Slot 1	15
2.5.3	Slot 2	16
A	Summary	17
A.1	Status	17
A.2	Comments	17

1 Front

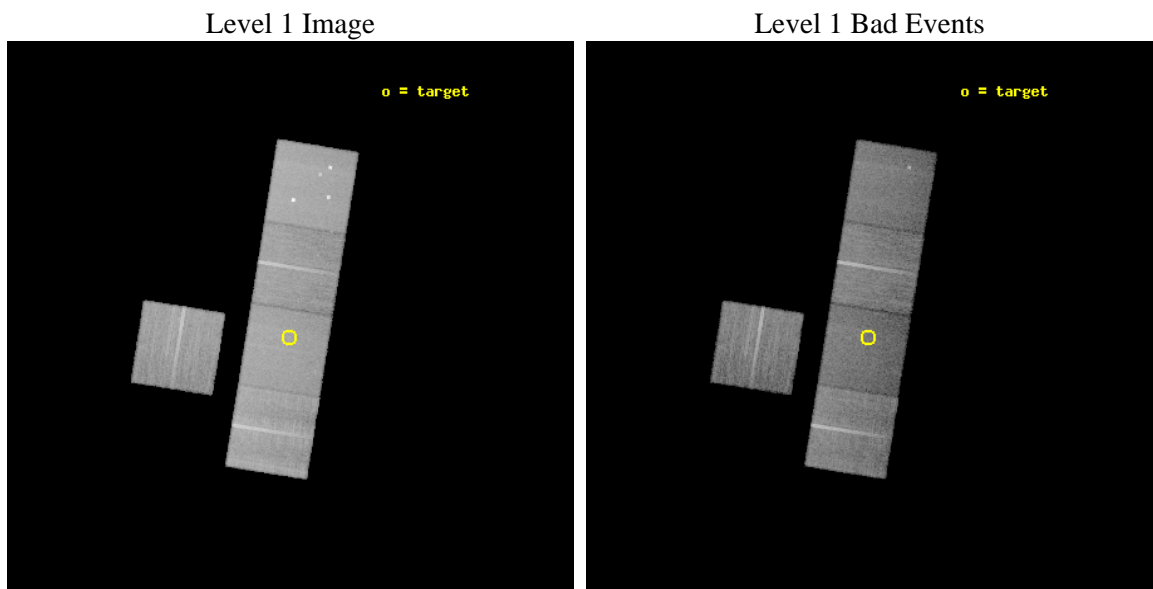
seq_num	800635	Sequence number
obs_id	8500	Observation id
title	AGN Heating of Clusters and Restarting Radio Galaxies	Proposal tit
observer	Dr Nazirah Jetha	Principal investigator
object	Abell 695	Source name
dtcycle	0	
cycle	P	events from which exps? Prim/Second/Both
ra_targ	130.304167	Observer's specified target RA [deg]
dec_targ	32.416389	Observer's specified target Dec [deg]
ra_nom	130.30220267613	Nominal RA [deg]
dec_nom	32.437174945099	Nominal Dec [deg]
roll_nom	99.157685262106	Nominal Roll [deg]
revision	3	Processing version of data
ontime	22041.000169516	Sum of GTIs [s]
livetime	21753.018275953	Livetime [s]
ontime3	22041.000169516	Sum of GTIs [s]
ontime5	22041.000169516	Sum of GTIs [s]
ontime6	22041.000169516	Sum of GTIs [s]
ontime7	22041.000169516	Sum of GTIs [s]
ontime8	22041.000169516	Sum of GTIs [s]
l2events	235540	Number of level 2 events



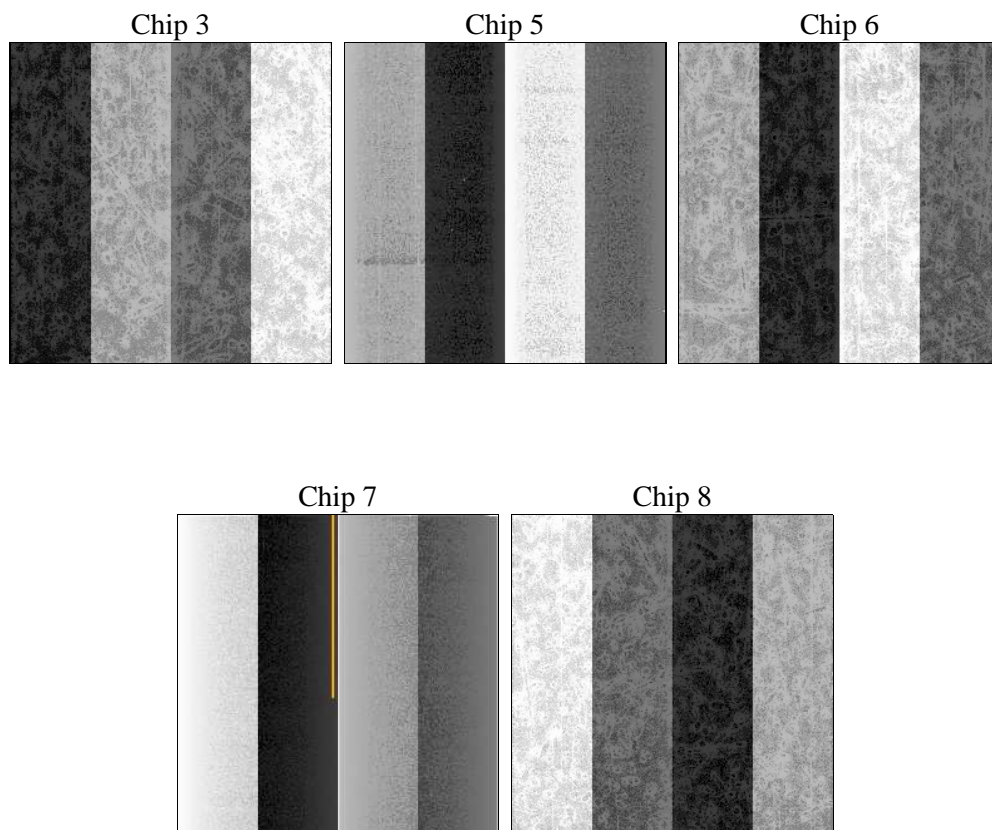
2 OBI

2.1 OBI

2.1.1 Images



2.1.2 Bias



2.1.3 Parameters

obi_num	0	Obi number	sched_exp_time	22000.000000	[s] Scheduled observation exposure time
ascdsver	8.4.3.1	Processing system revision	ontime	22041.000169516	Sum of GTIs [s]
caldsver	4.4.9	 	ontime3	22041.000169516	Sum of GTIs [s]
date	2012-04-16T06:13:57	Date and time of file creation	ontime5	22041.000169516	Sum of GTIs [s]
revision	3	Processing version of data	ontime6	22041.000169516	Sum of GTIs [s]
			ontime7	22041.000169516	Sum of GTIs [s]
			ontime8	22041.000169516	Sum of GTIs [s]
			l1events	971576	Number of level 1 events

2.1.4 Events

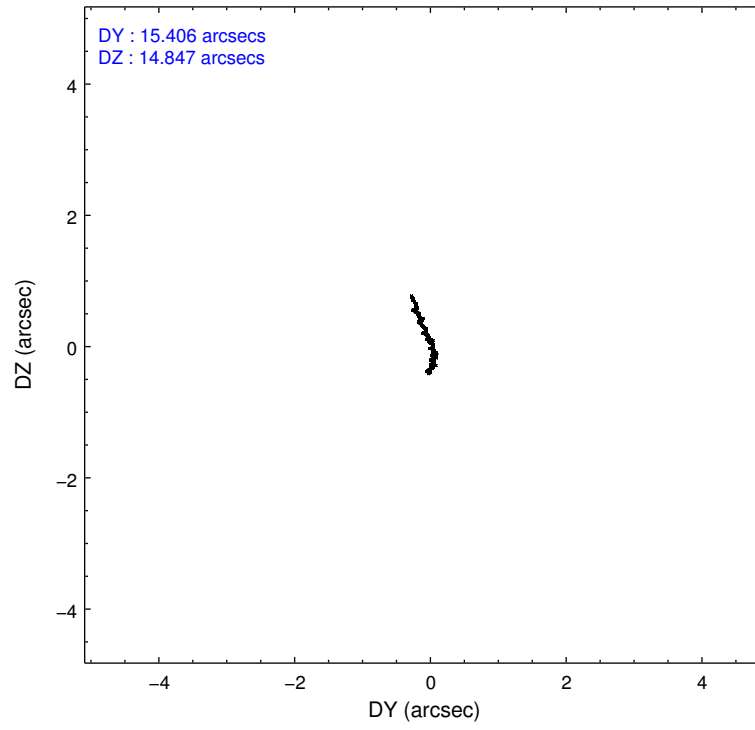
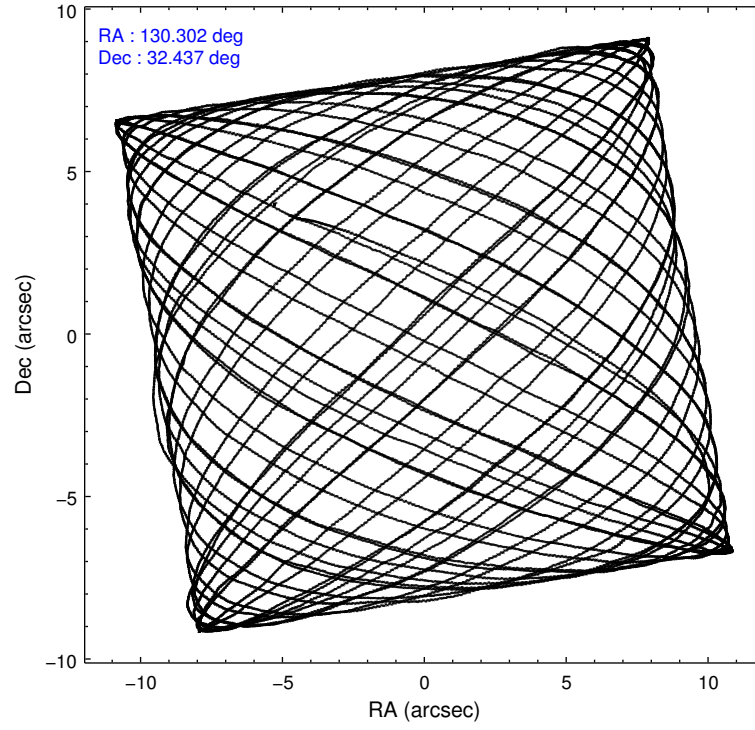
	ccd 3	ccd 5	ccd 6	ccd 7	ccd 8
level 1 events	165885	238416	168451	187693	211131
rejected events	150724	117162	150869	102223	161159
rejected %	90%	49%	89%	54%	76%

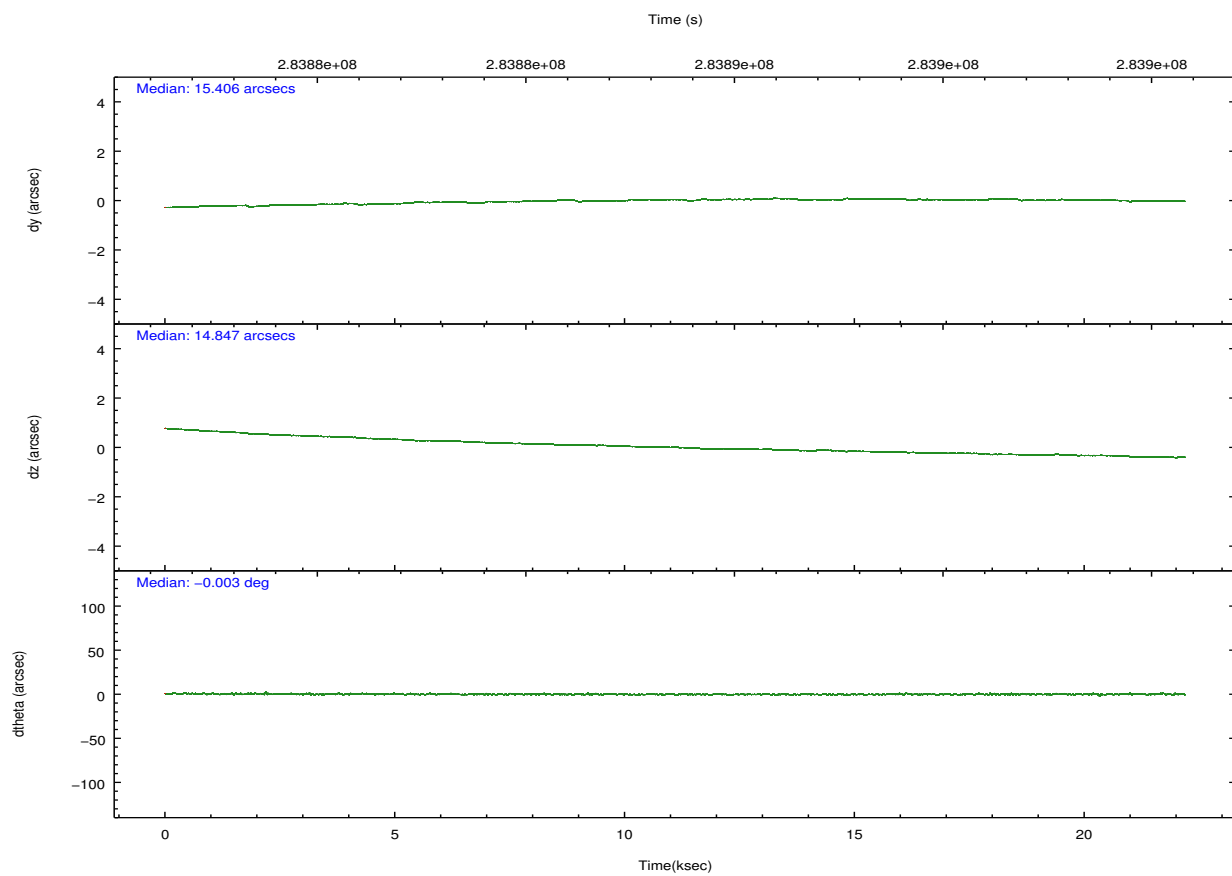
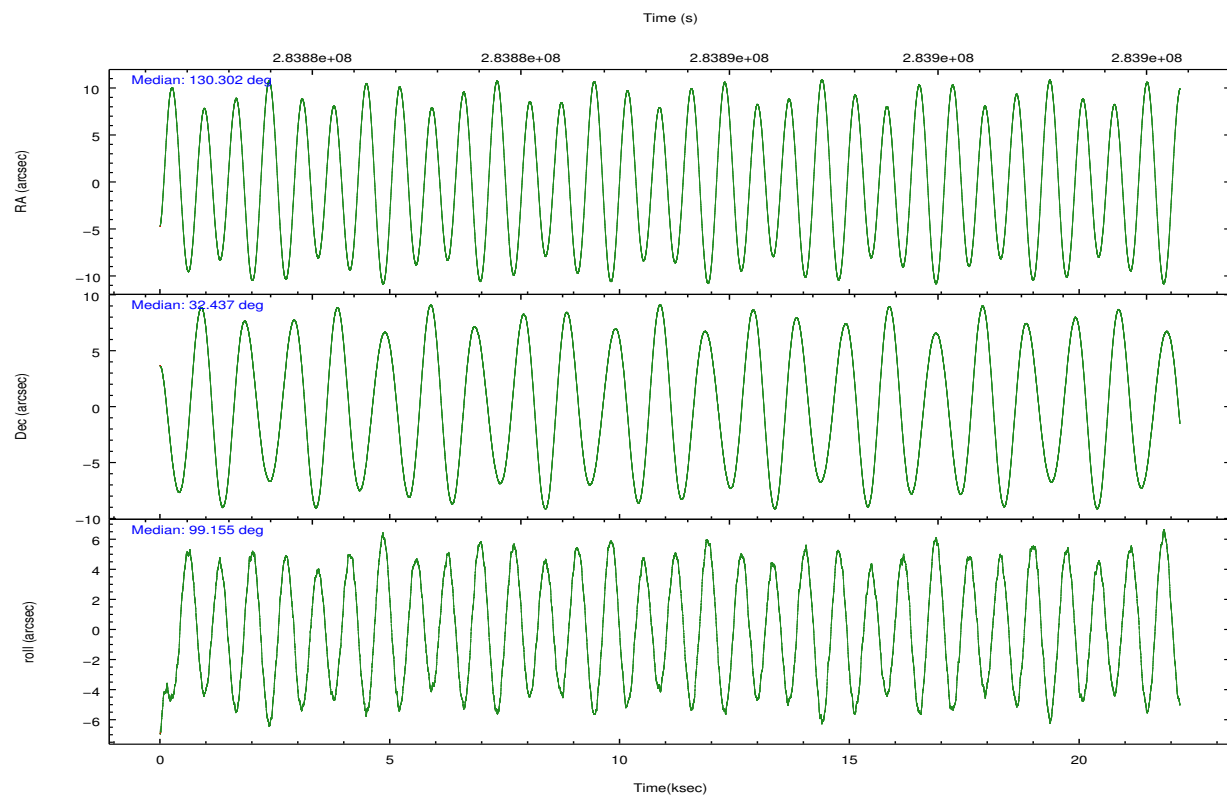
	ccd 3	ccd 5	ccd 6	ccd 7	ccd 8
grade 0 events	5386	17844	6269	7978	14829
	3%	7%	3%	4%	7%
grade 1 events	74	390	71	240	160
	0%	0%	0%	0%	0%
grade 2 events	3242	34769	3870	17308	11393
	1%	14%	2%	9%	5%
grade 3 events	1750	4847	1881	8022	5401
	1%	2%	1%	4%	2%
grade 4 events	1720	4578	1919	7724	4991
	1%	1%	1%	4%	2%
grade 5 events	6518	18182	6588	19250	9638
	3%	7%	3%	10%	4%
grade 6 events	3065	59251	3651	44469	13378
	1%	24%	2%	23%	6%
grade 7 events	144130	98555	144202	82702	151341
	86%	41%	85%	44%	71%

2.2 Compared Parameters

Parameter	Planned	Actual	Parameter	Planned	Actual
Instrument	ACIS	ACIS	Obspar format version number	7	7
Detector	ACIS-35678	ACIS-35678	Obspar file type	PREDICTED	ACTUAL
Grating	NONE	NONE	Obspar update status	NONE	UPDATED
Data mode	VFAINT	VFAINT	CCD I0 on	N	N
Observation mode	POINTING	POINTING	CCD I1 on	N	N
[deg] Pointing RA	130.322992	130.3022026761325	CCD I2 on	N	N
[deg] Pointing Dec	32.416204	32.43717494509903	CCD I3 on	O2	Y
[deg] Pointing Roll	98.989912	99.15768526210609	CCD S0 on	N	N
[mm] SIM focus pos	-0.684267	-0.6828225247311905	CCD S1 on	O1	Y
[mm] SIM defocus	0	0.001444936568705701	CCD S2 on	Y	Y
[mm] SIM translation stage pos	-190.132523	-190.1425803651734	CCD S3 on	Y	Y
[mm] SIM translation stage offset	0	0.01005778216563158	CCD S4 on	O3	Y
[s] Observation start time (MET)	283877664.184000	283876724.22441	CCD S5 on	N	N
Observation start date	2006-12-30T14:53:19	2006-12-30T14:38:44	Number of optional ACIS chips dropped	0	0
[s] Observation end time (MET)	283899664.184000	283900317.16303	On-chip summing requested	N	N
Observation end date	2006-12-30T20:59:59	2006-12-30T21:11:57	Subarray requested	NONE	NONE
Read mode	TIMED	TIMED	Alternating exposures requested	N	N
			[s] Primary exposure time	0.000000	3.1

2.3 Aspect



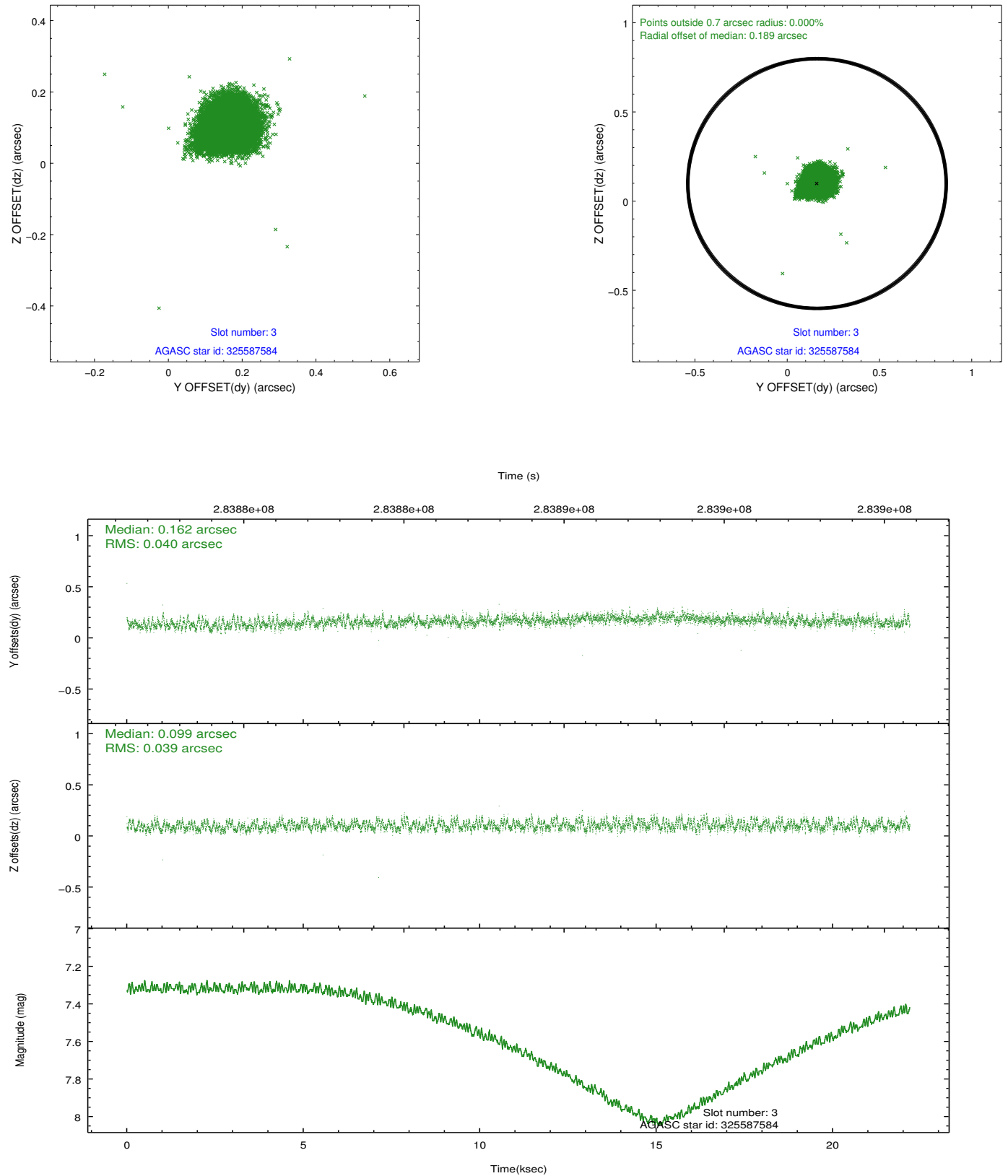


Slot Statistics

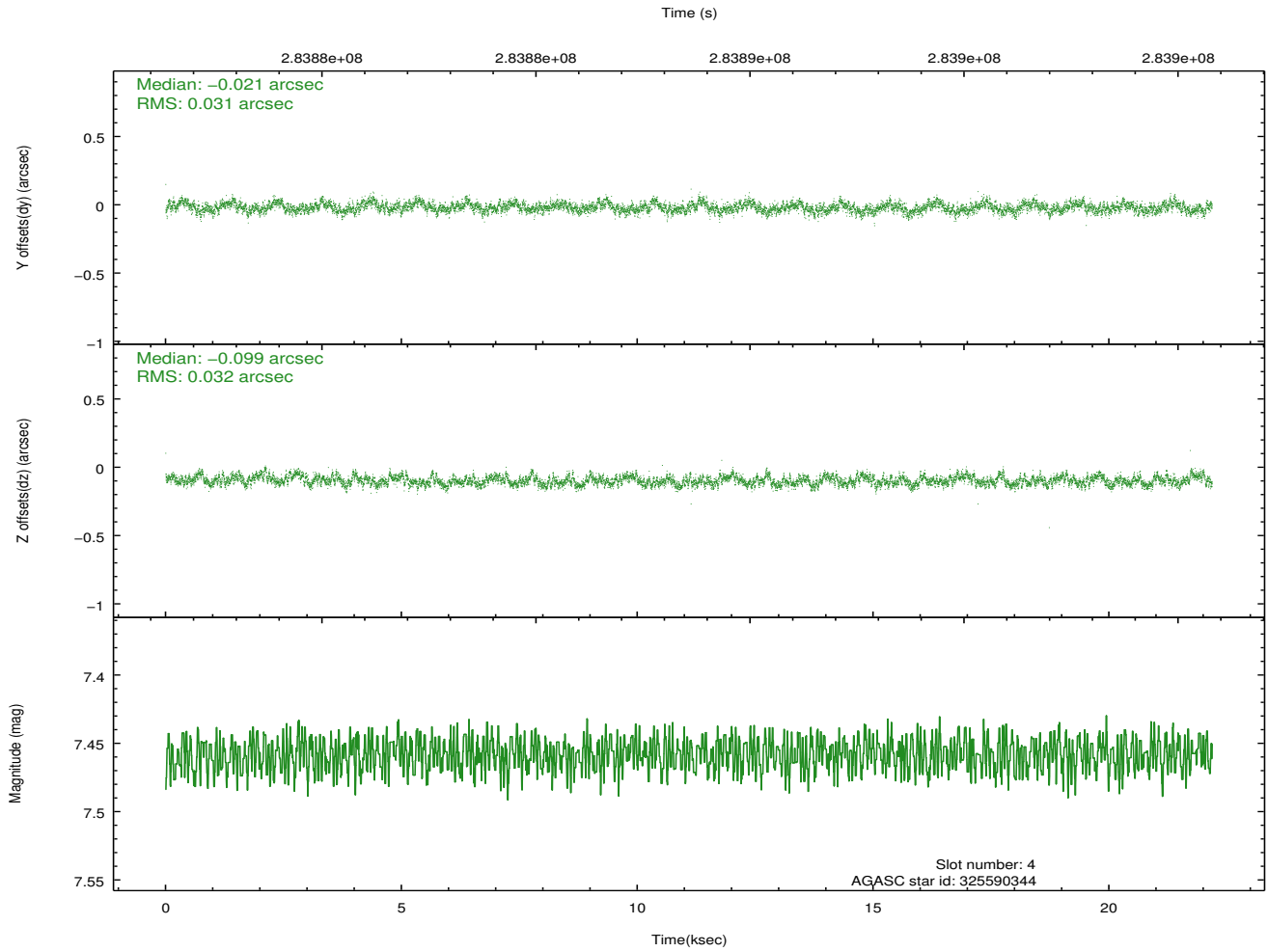
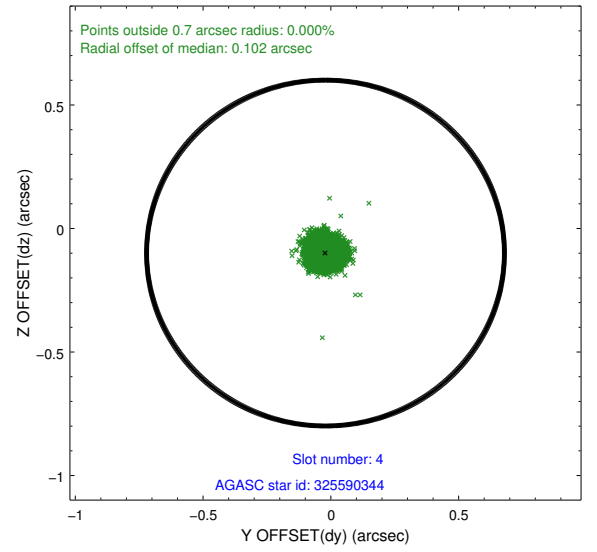
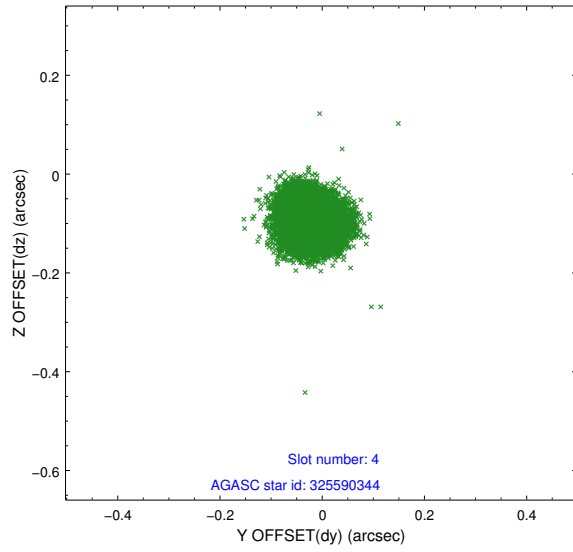
slot	status	id	mag	n_pts	med_dy	med_dz	dr1	dr2	ra	dec	mean_y	mean_z
0	FID	ACIS-S-2	7.10	5411	-0.142	-0.096	0.008	0.019	0.000000	0.000000	-768.52	-1736.31
1	FID	ACIS-S-4	7.20	5411	0.157	0.074	0.007	0.013	0.000000	0.000000	2145.02	172.14
2	FID	ACIS-S-6	7.34	5411	-0.042	0.030	0.009	0.018	0.000000	0.000000	393.80	809.70
3	GUIDE	325587584	7.52	10821	0.162	0.099	0.060	0.092	130.692552	31.862605	-2143.12	-804.64
4	GUIDE	325590344	7.46	10817	-0.021	-0.099	0.048	0.075	129.918710	32.043870	-1129.23	1427.44
5	GUIDE	325596368	7.33	10821	0.093	0.087	0.051	0.084	131.061801	32.062651	-1601.42	-2028.10
6	GUIDE	325994504	8.42	10818	0.005	-0.000	0.064	0.102	129.983689	32.659182	1026.17	878.73
7	GUIDE	325991976	7.19	10820	-0.239	-0.085	0.045	0.074	130.084629	33.009870	2224.09	376.85

2.4 Star Slots

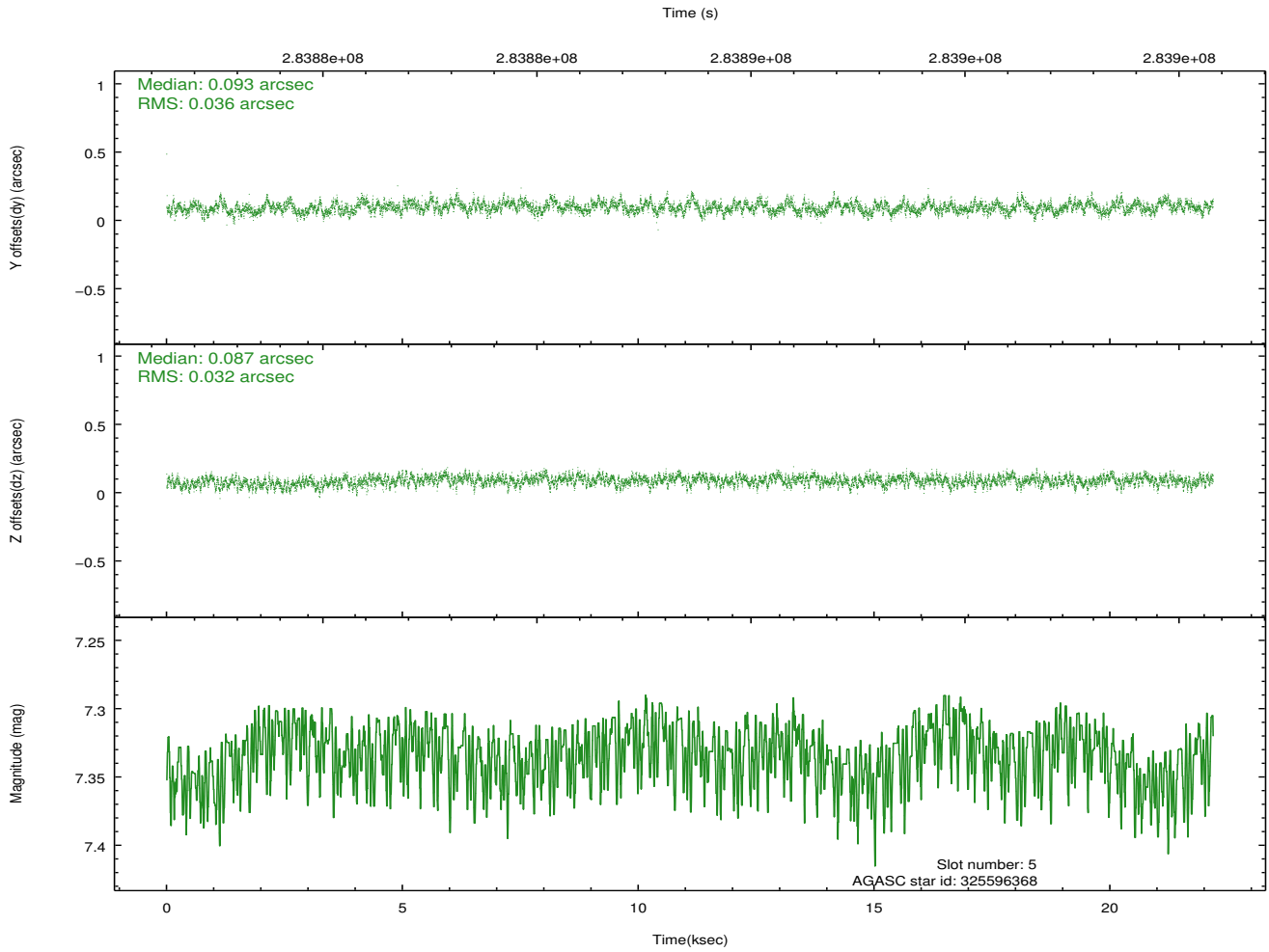
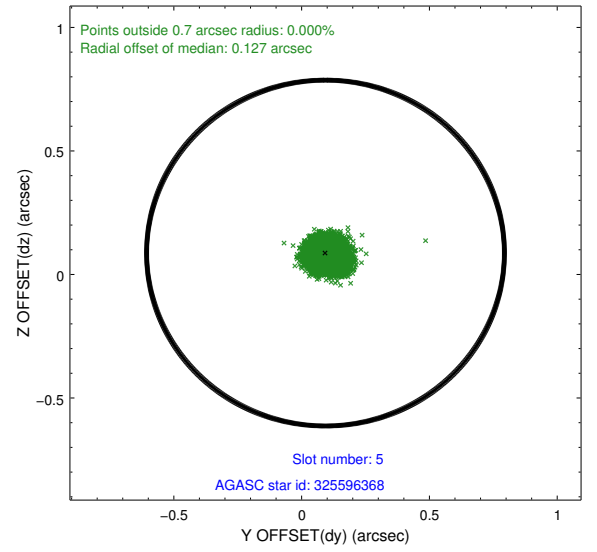
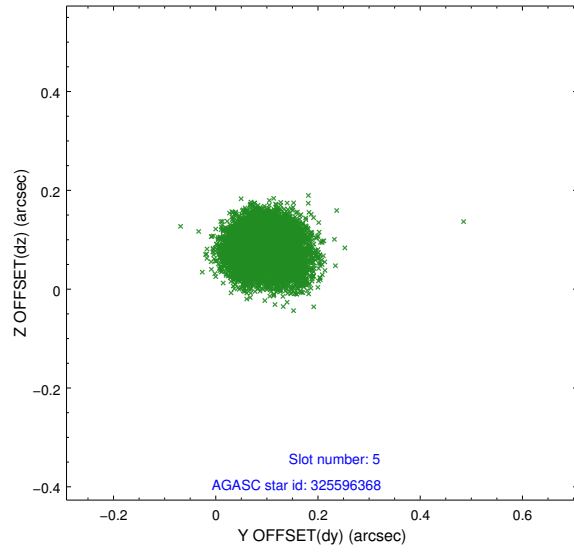
2.4.1 Slot 3



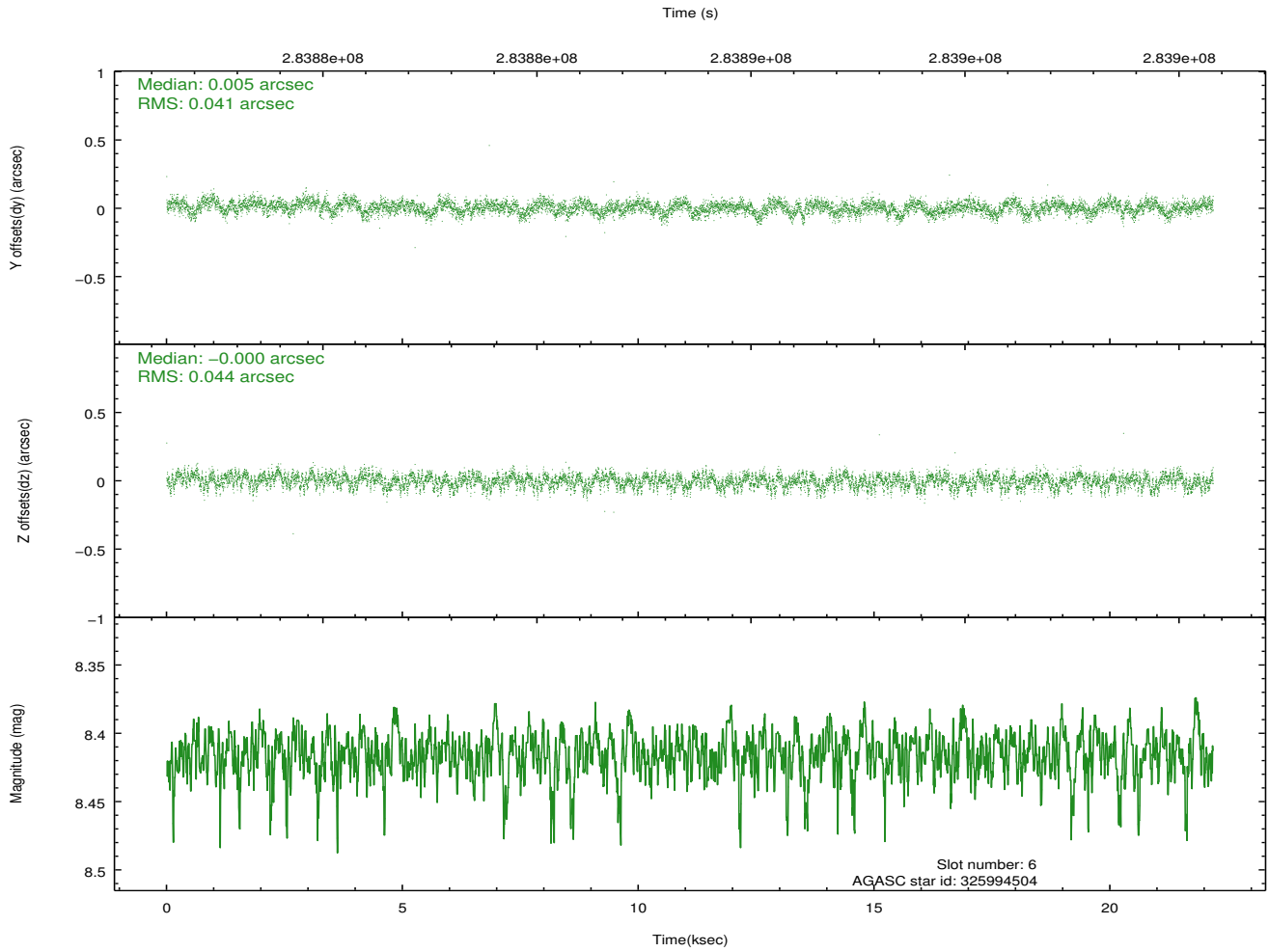
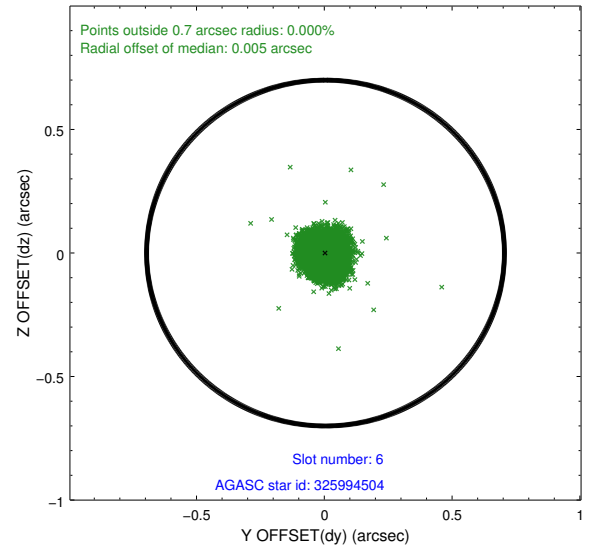
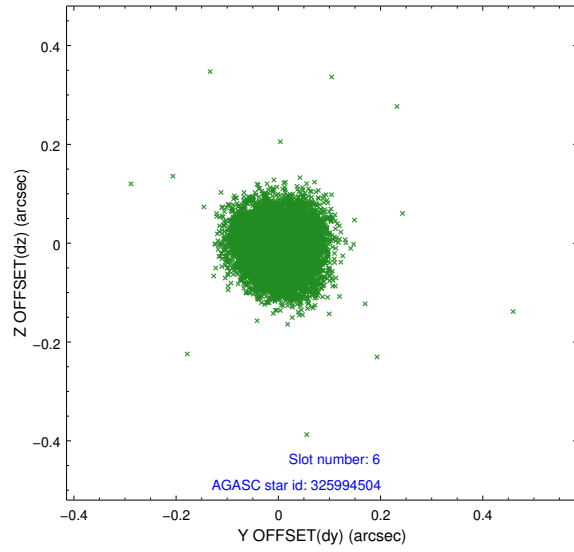
2.4.2 Slot 4



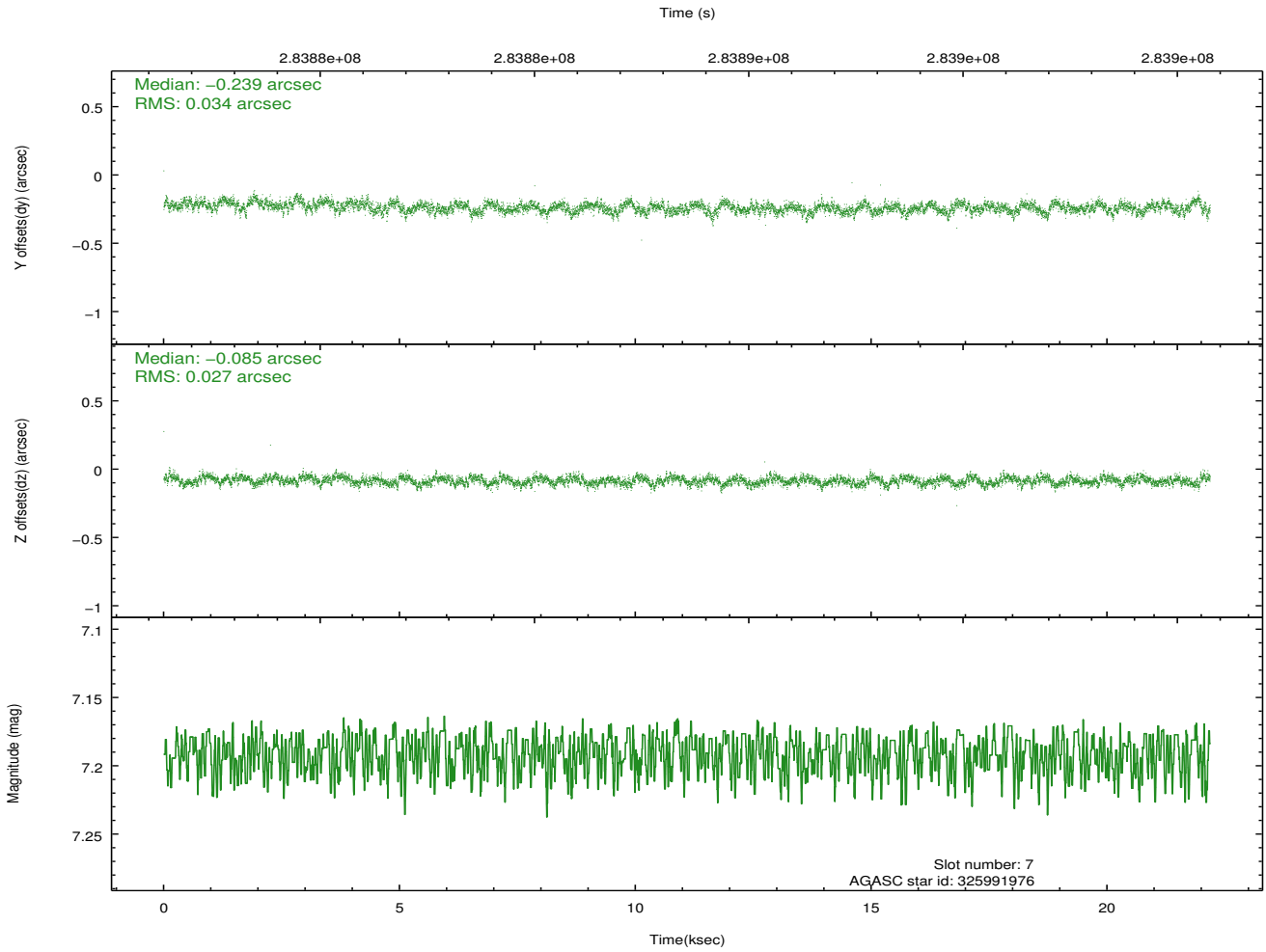
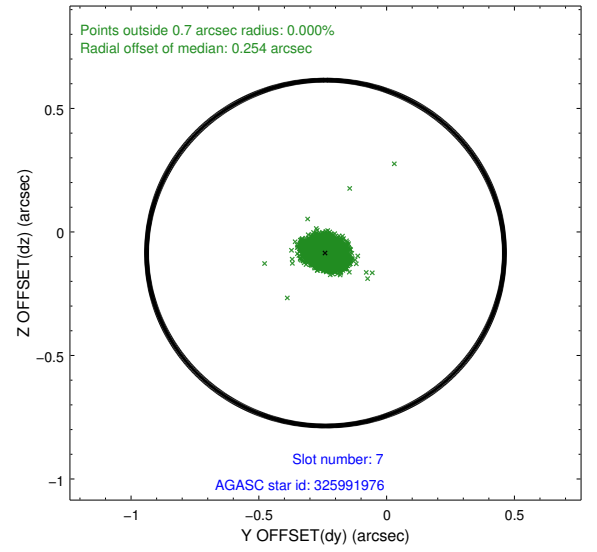
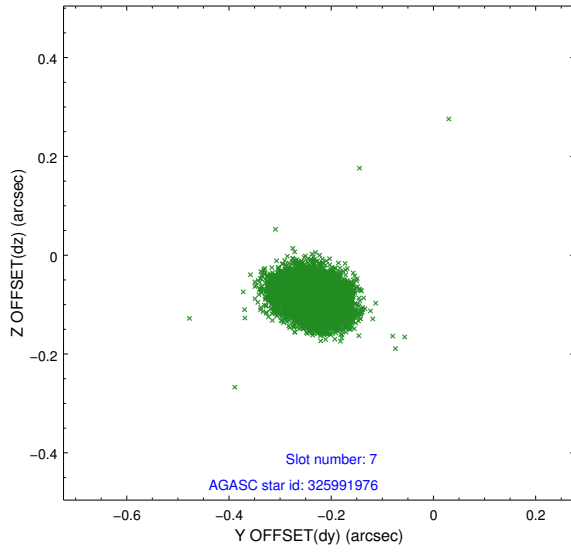
2.4.3 Slot 5



2.4.4 Slot 6

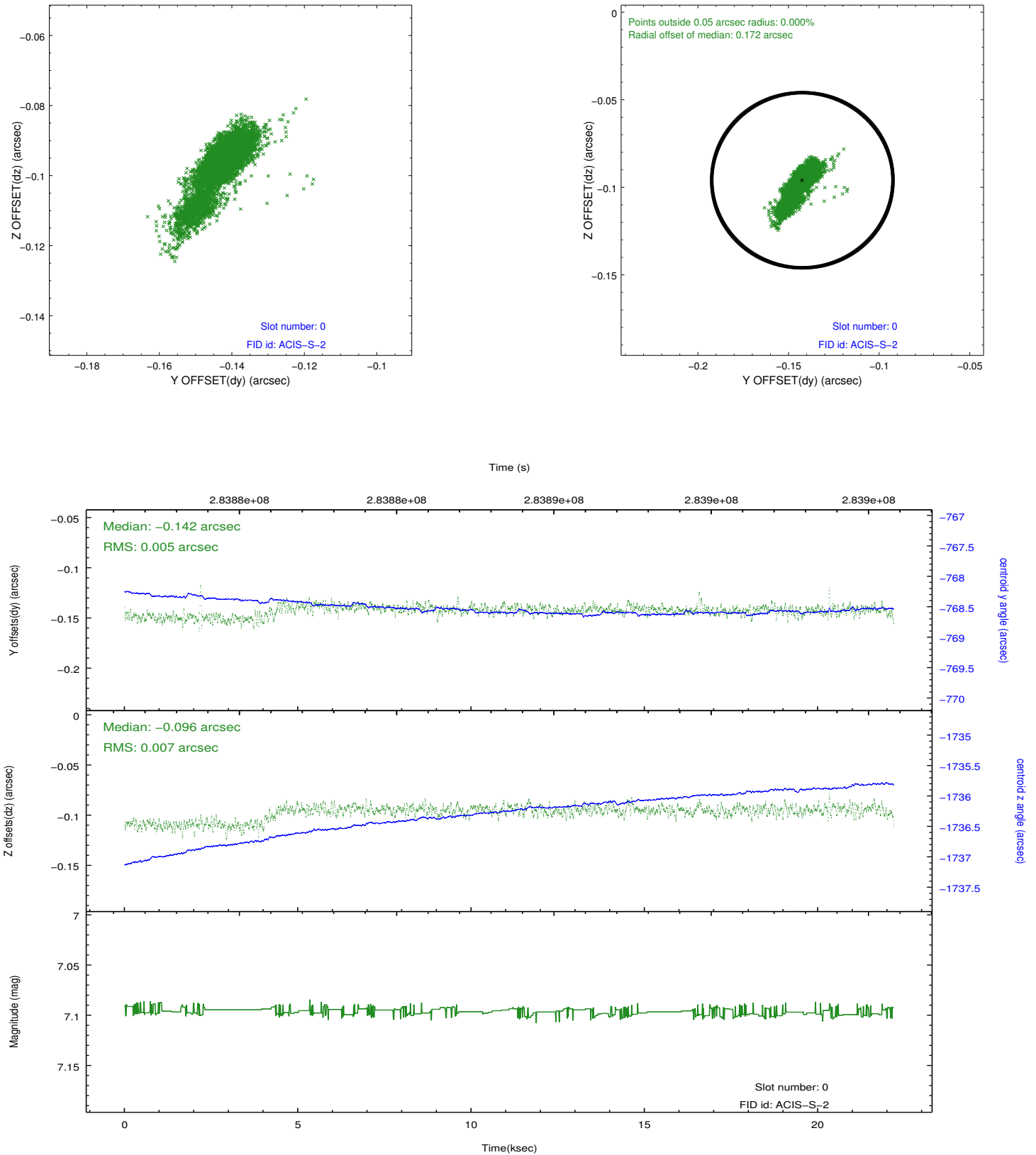


2.4.5 Slot 7

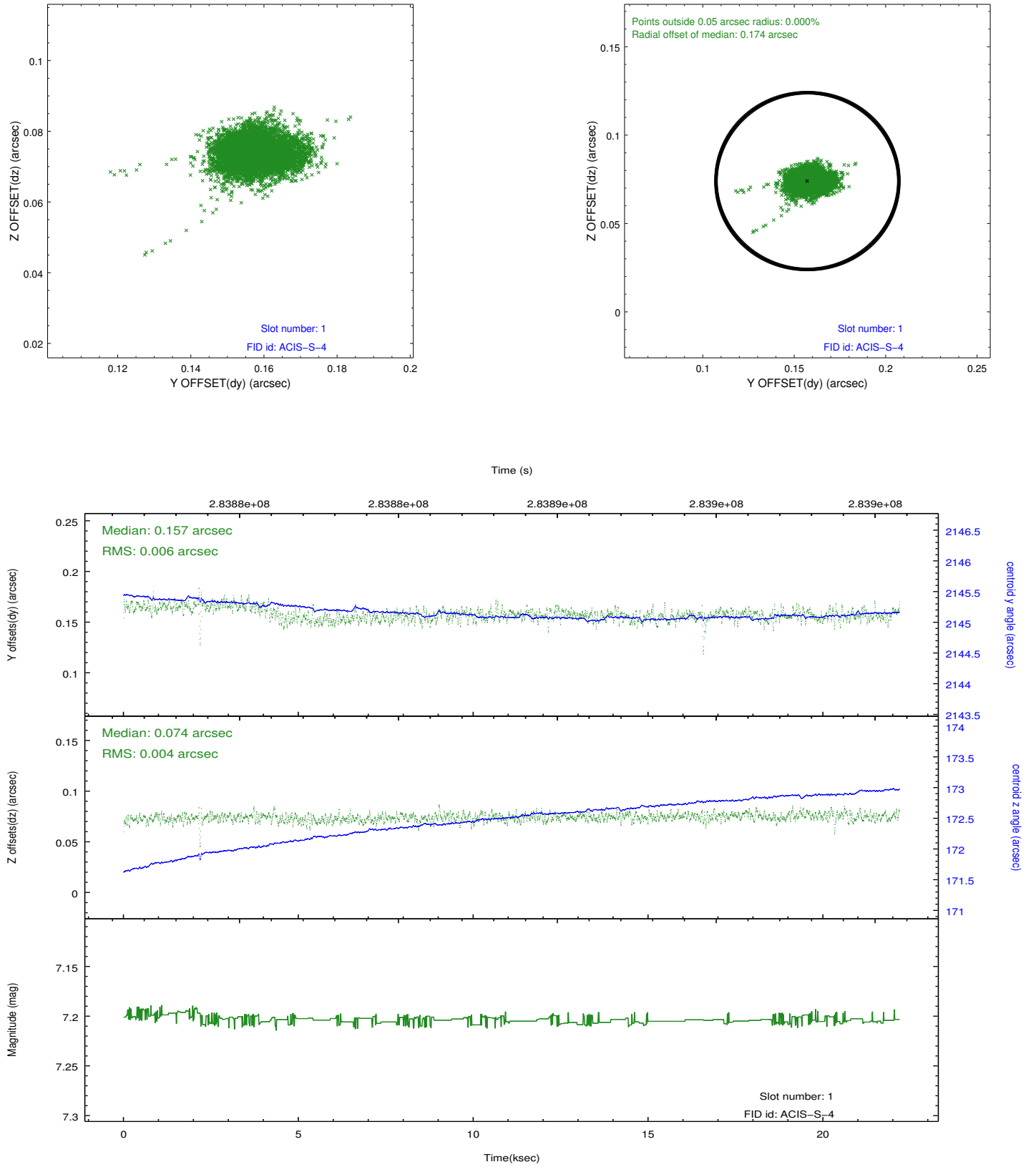


2.5 FID Slots

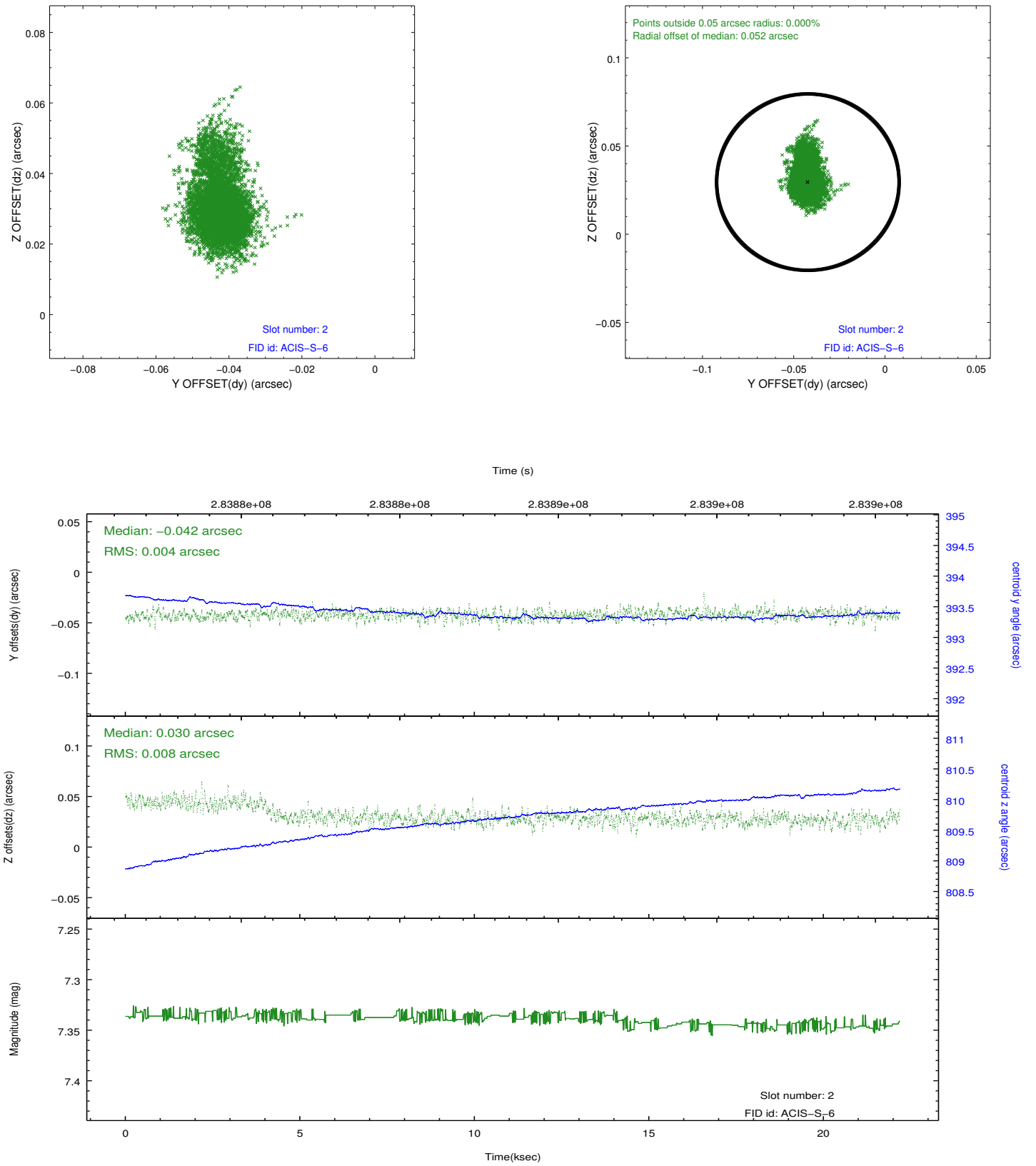
2.5.1 Slot 0



2.5.2 Slot 1



2.5.3 Slot 2



A Summary

A.1 Status

V&V Scientist	Jen Lauer
V&V Date (YYYY-MM-DD)	2012.04.18
V&V Edition	1
V&V Disposition and Status	OK
V&V Charge Time	22.0410001

A.2 Comments

Preferred roll constraint met. Roll angle of 99 degrees matches obsid 7917 which is the other part of this observation.