

V&V Reference Report

L2 ASCDS Version : 8.1.1

Observation 850 - L2 Version 4

Chandra X-Ray Center

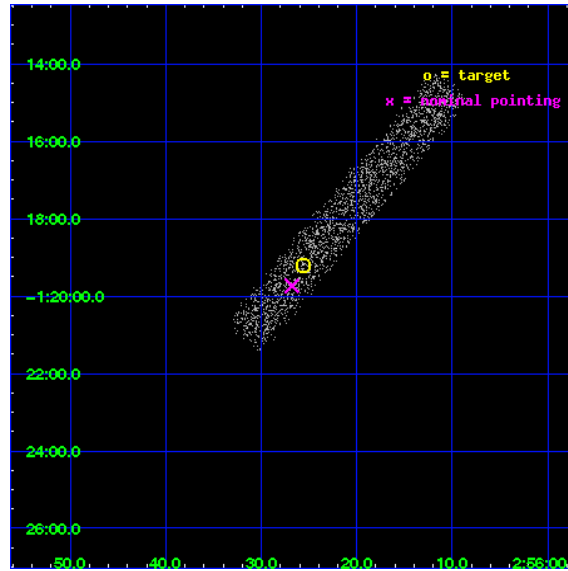
L2 Processing Date : Nov 25 2009

Contents

1	Front	2
2	OBI	3
2.1	OBI	3
2.1.1	Images	3
2.1.2	Bias	3
2.1.3	Parameters	4
2.1.4	Events	4
2.2	Compared Parameters	5
2.3	Aspect	6
2.4	Star Slots	9
2.4.1	Slot 3	9
2.4.2	Slot 4	10
2.4.3	Slot 5	11
2.4.4	Slot 6	12
2.4.5	Slot 7	13
2.5	FID Slots	14
2.5.1	Slot 0	14
2.5.2	Slot 1	15
2.5.3	Slot 2	16
3	Point Sources	17
A	Summary	18
A.1	Status	18
A.2	Comments	18

1 Front

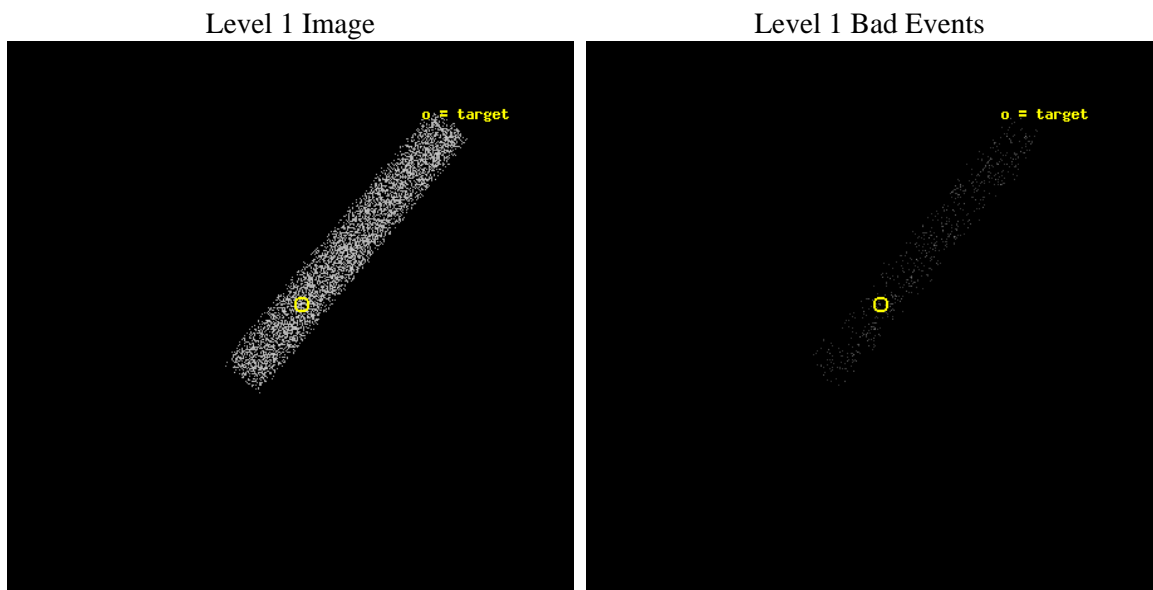
seq_num	700155	Sequence number
obs_id	850	Observation id
title	X-RAYS FROM RADIO-LOUD BROAD ABSORPTION LINE QSOS	Proposal title
observer	Prof. Michael Brotherton	Principal investigator
object	BAL 0256-0119	Source name
dtcycle	0	
cycle	P	events from which exps? Prim/Second/Both
ra_targ	44.106667	Observer's specified target RA
dec_targ	-1.319972	Observer's specified target Dec
ra_nom	44.111680834194	Nominal RA
dec_nom	-1.3289979435086	Nominal Dec
roll_nom	309.79554066526	Nominal Roll
revision	4	Processing version of data
ontime	4948.7999815568	Sum of GTIs [s]
livetime	4488.3003641909	Livetime [s]
ontime7	4948.7999815568	Sum of GTIs [s]
l2events	2505	Number of level 2 events



2 OBI

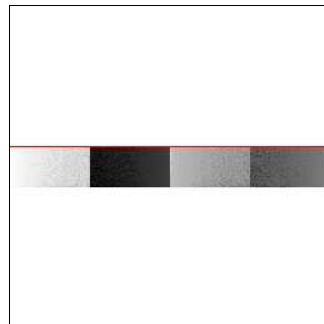
2.1 OBI

2.1.1 Images



2.1.2 Bias

Chip 7



2.1.3 Parameters

obi_num	0	Obi number	sched_exp_time	5000.000000	Scheduled observation exposure time
ascdsver	8.1.1	ASCDS version number	ontime	4948.7999815568	Sum of GTIs [s]
caldbver	4.1.4	 	ontime7	4948.7999815568	Sum of GTIs [s]
date	2009-11-25T12:40:51	Date and time of file creation	l1events	6337	Number of level 1 events
revision	3	Processing version of data			

2.1.4 Events

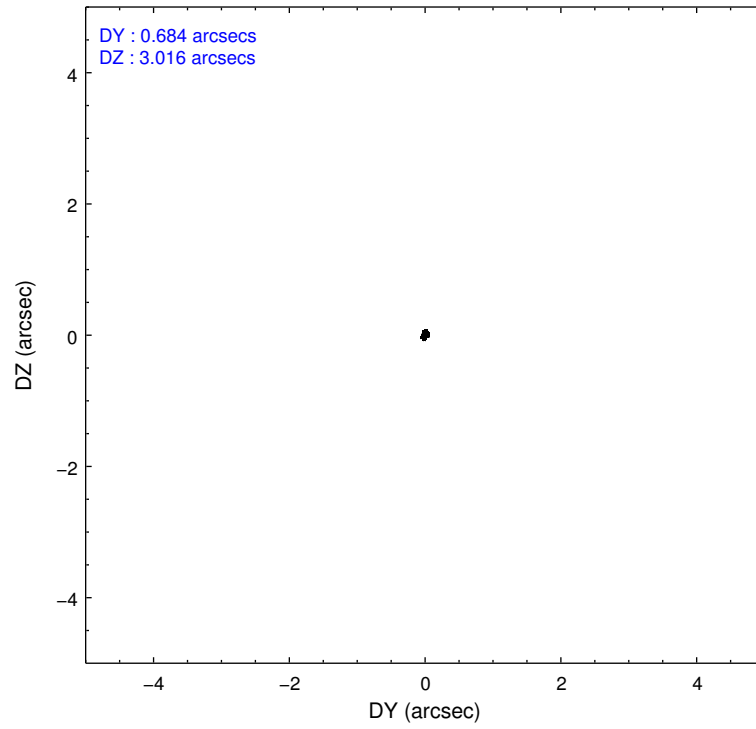
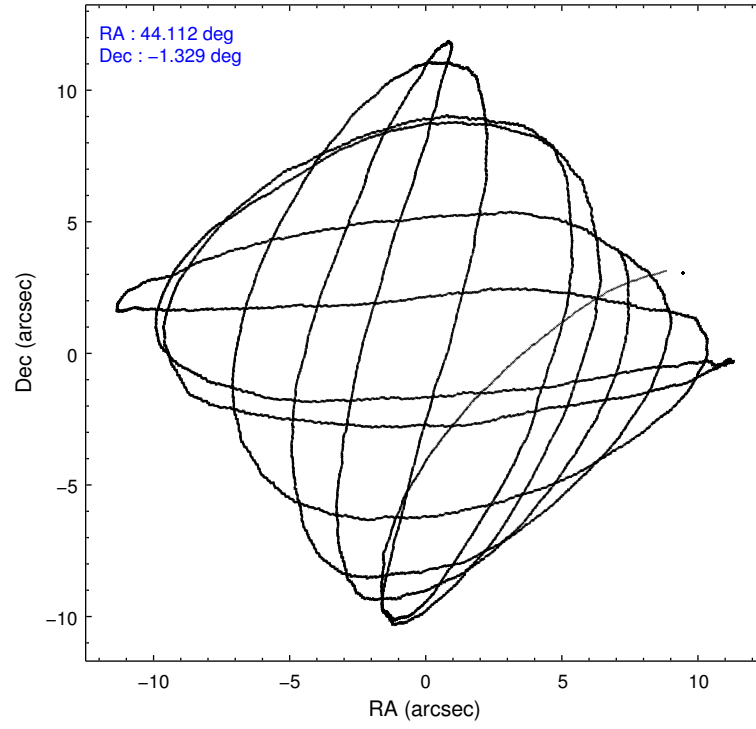
	ccd 7
level 1 events	6337
rejected events	3674
rejected %	57%

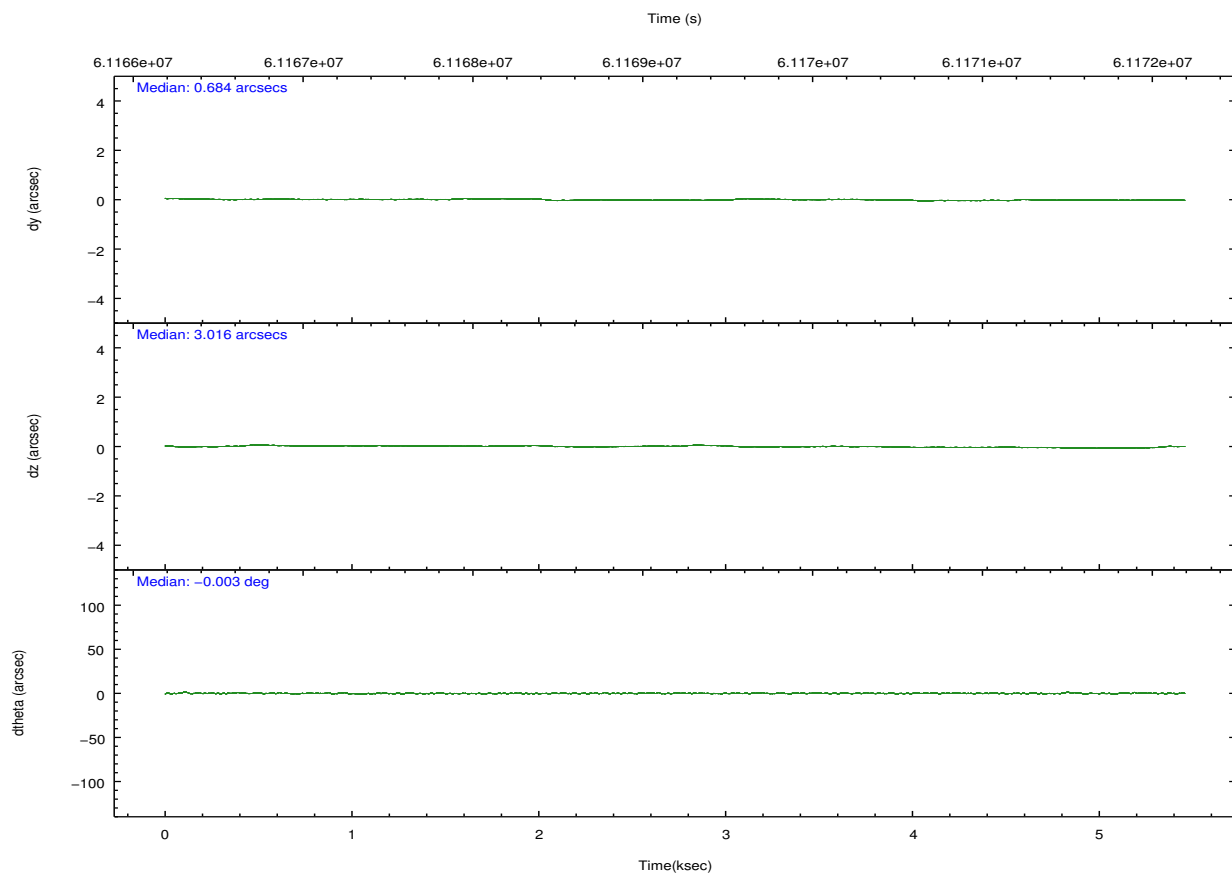
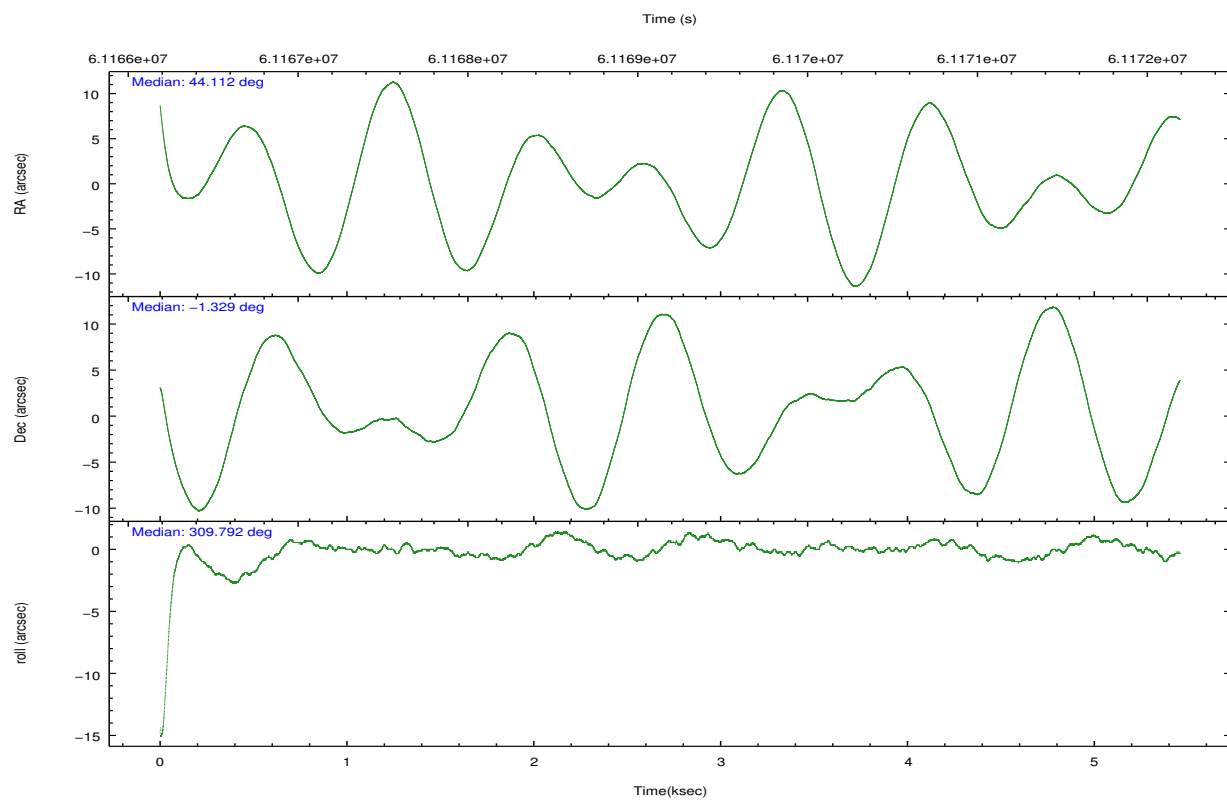
	ccd 7
grade 0 events	190
	2%
grade 1 events	3
	0%
grade 2 events	483
	7%
grade 3 events	303
	4%
grade 4 events	279
	4%
grade 5 events	345
	5%
grade 6 events	1408
	22%
grade 7 events	3326
	52%

2.2 Compared Parameters

Parameter	Planned	Actual	Parameter	Planned	Actual
Instrument	ACIS	ACIS	Obspar format version number	6	6
Detector	ACIS-7	ACIS-7	Obspar file type	PREDICTED	ACTUAL
Grating	NONE	NONE	Obspar update status	NONE	UPDATED
Data mode	FAINT	FAINT	Number of optional ACIS chips dropped	0	0
Observation mode	POINTING	POINTING	On-chip summing requested	N	N
Pointing RA	44.085773	44.11168083419424	Subarray requested	CUSTOM	1/8
Pointing Dec	-1.319313	-1.328997943508639	Subarray start row	448	448
Pointing Roll	309.638343	309.795540665256	Subarray row count	128	128
SIM focus pos (mm)	-0.684267	-0.6828225247311905	Alternating exposures requested	N	N
SIM defocus (mm)	0	0.001444936568705701	Primary exposure time	0.000000	0.4
SIM translation stage pos (mm)	-190.132523	-190.1425803651734			
SIM translation stage offset (mm)	0	0.01005778216563158			
Observation start time	61166918.184000	61165771.003845			
Observation start date	1999-12-09T22:47:34	1999-12-09T22:29:31			
Observation end time	61171918.184000	61172063.991573			
Observation end date	1999-12-10T00:10:54	1999-12-10T00:14:23			
Read mode	TIMED	TIMED			

2.3 Aspect



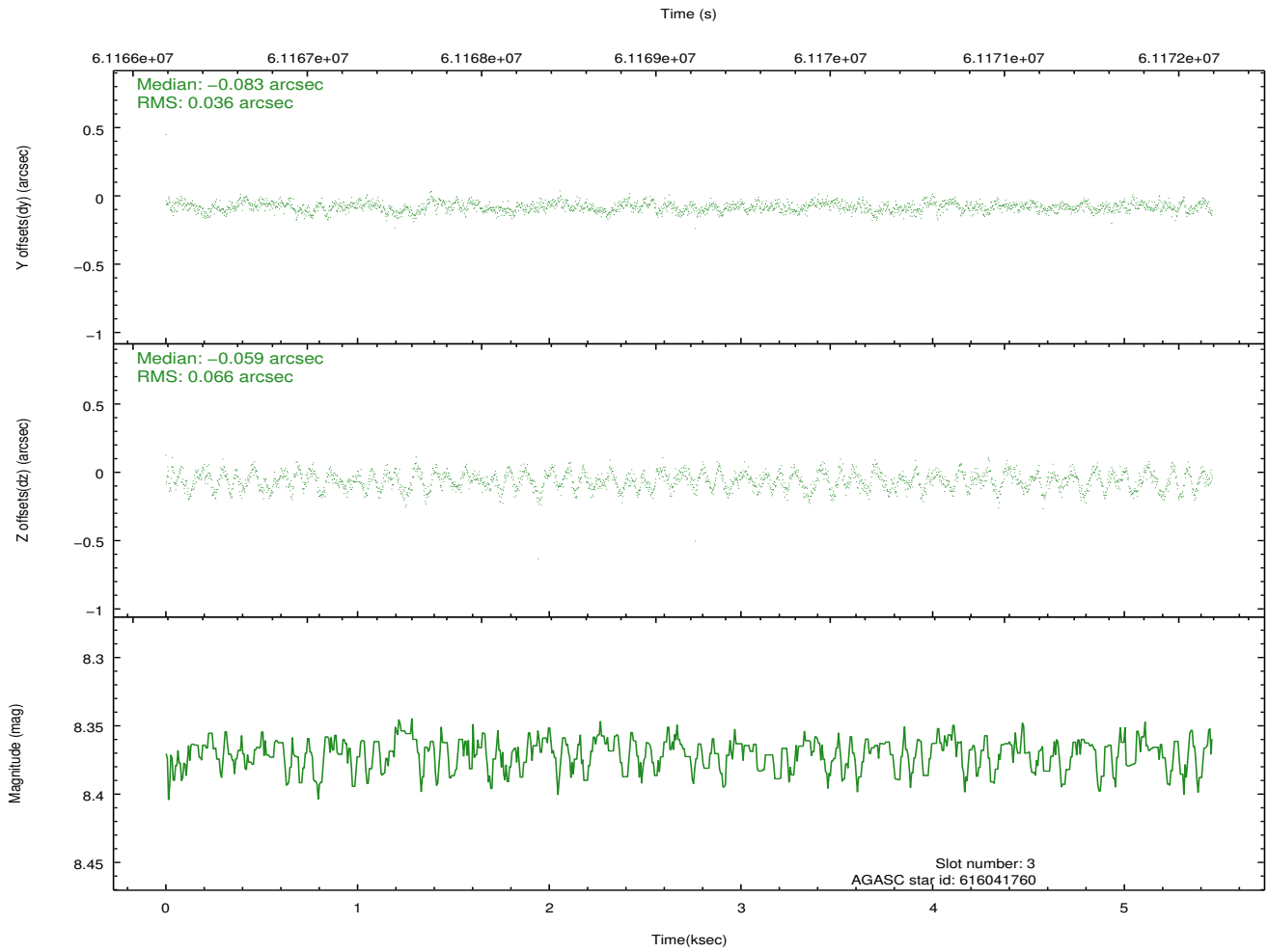
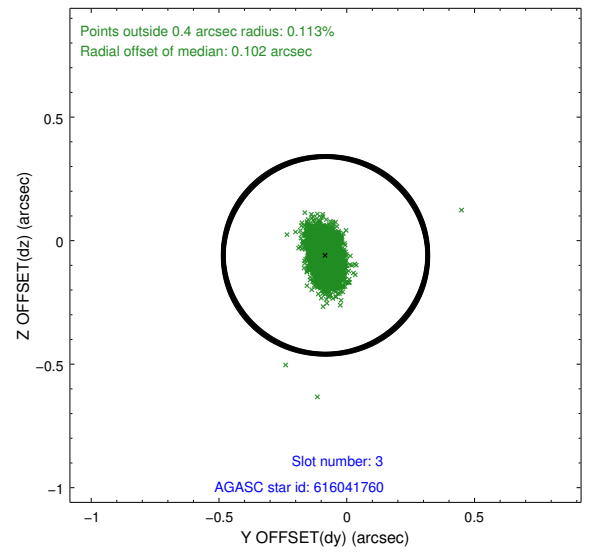
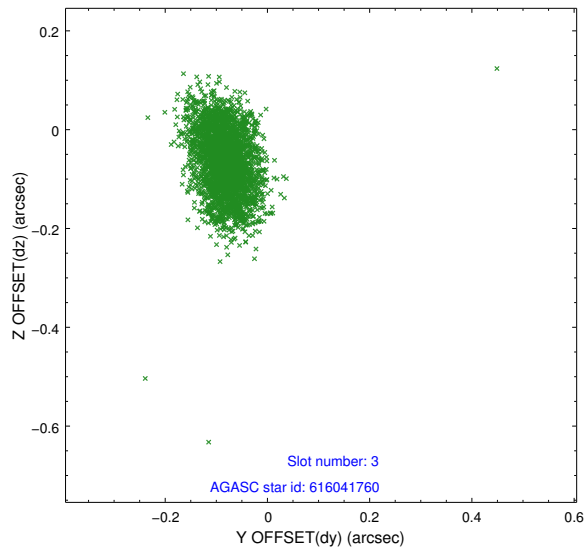


Slot Statistics

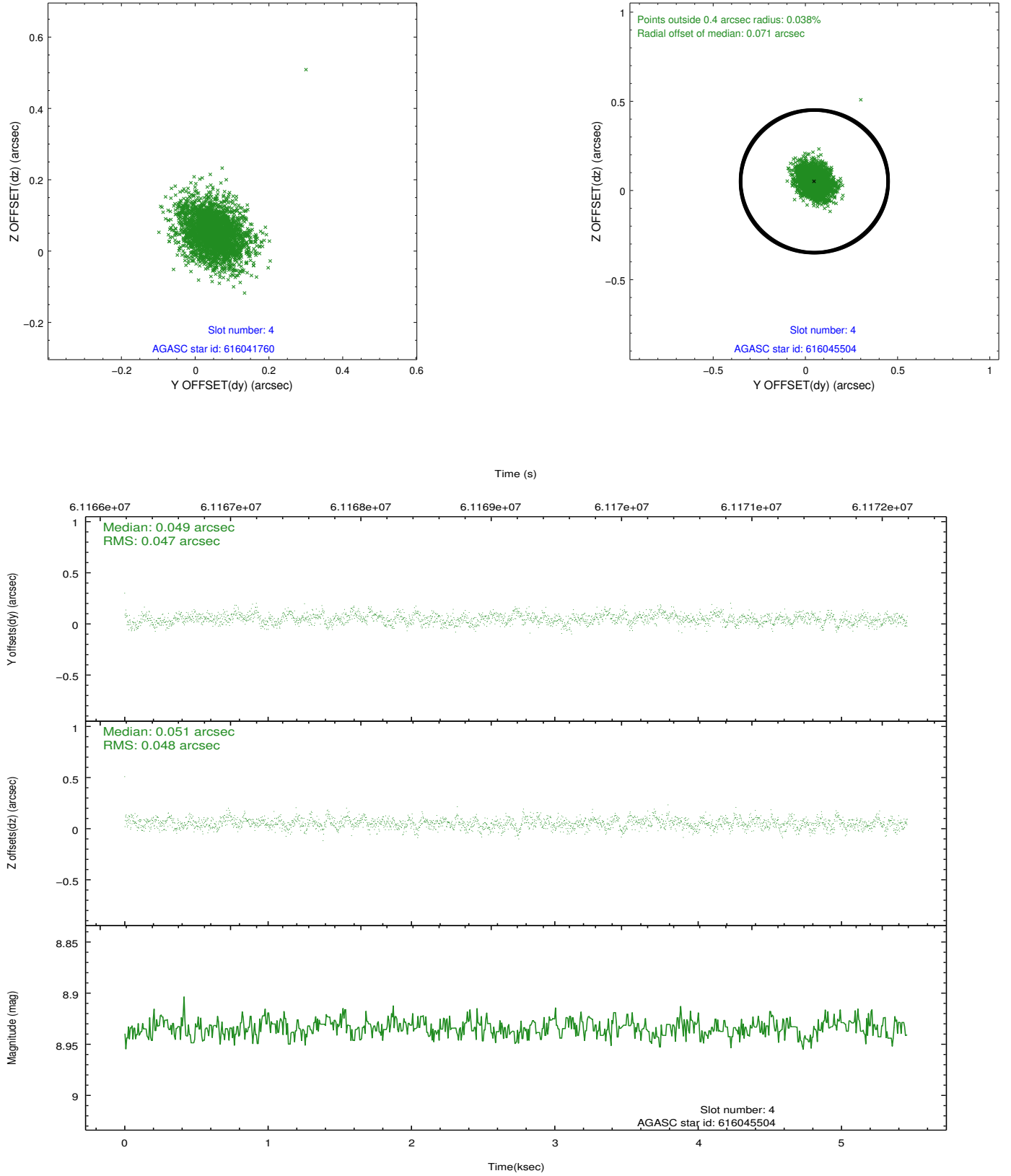
slot	status	id	mag	n_pts	med_dy	med_dz	dr1	dr2	ra	dec	mean_y	mean_z
0	FID	ACIS-S-1	7.20	2664	0.029	-0.032	0.006	0.012	0.000000	0.000000	942.72	-1719.72
1	FID	ACIS-S-5	7.25	2664	-0.044	0.026	0.006	0.010	0.000000	0.000000	-1805.99	177.54
2	FID	ACIS-S-6	7.36	2664	-0.006	0.018	0.007	0.011	0.000000	0.000000	407.85	821.92
3	GUIDE	616041760	8.37	2663	-0.083	-0.059	0.078	0.128	43.423751	-1.458435	-1133.90	-2154.40
4	GUIDE	616045504	8.93	2663	0.049	0.051	0.071	0.117	44.599726	-1.580904	1904.88	823.00
5	GUIDE	616046304	9.46	2658	0.153	0.108	0.088	0.142	44.882753	-1.403884	2065.45	2015.11
6	GUIDE	616043480	9.36	2661	-0.088	-0.039	0.085	0.139	43.925266	-0.785618	-1847.47	781.56
7	GUIDE	616039592	9.47	2660	-0.029	-0.059	0.097	0.162	43.519617	-1.479205	-856.92	-1936.01

2.4 Star Slots

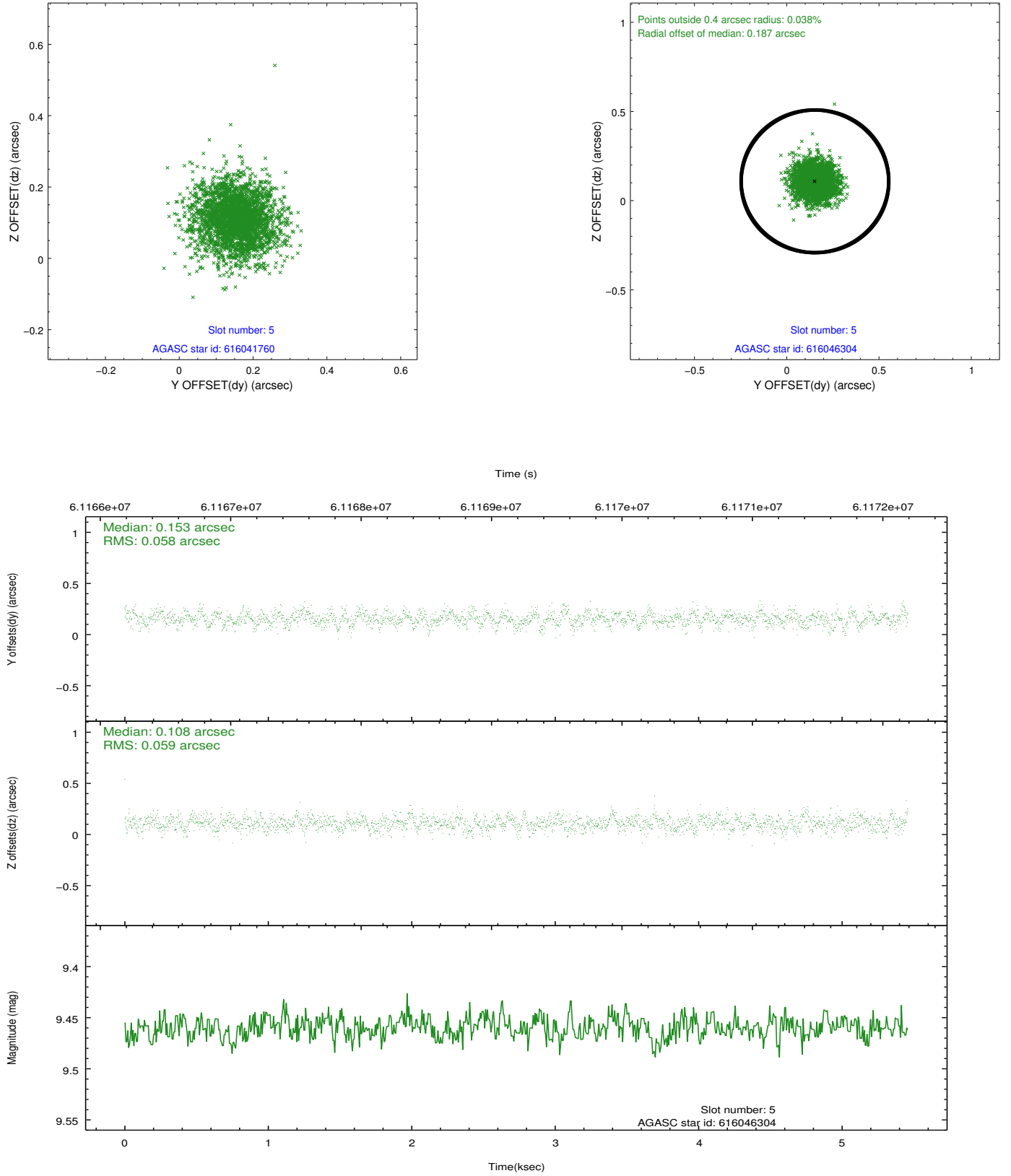
2.4.1 Slot 3



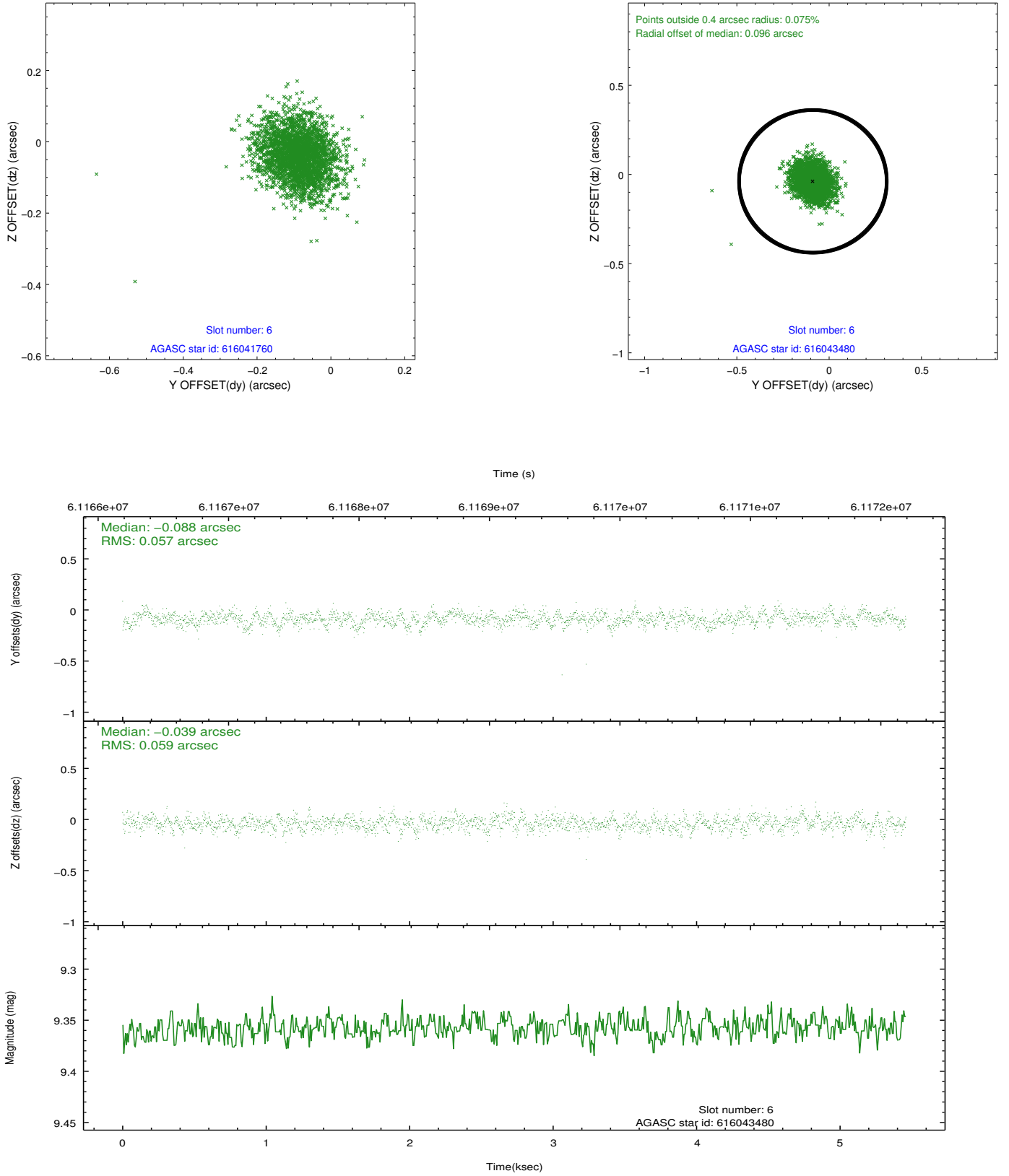
2.4.2 Slot 4



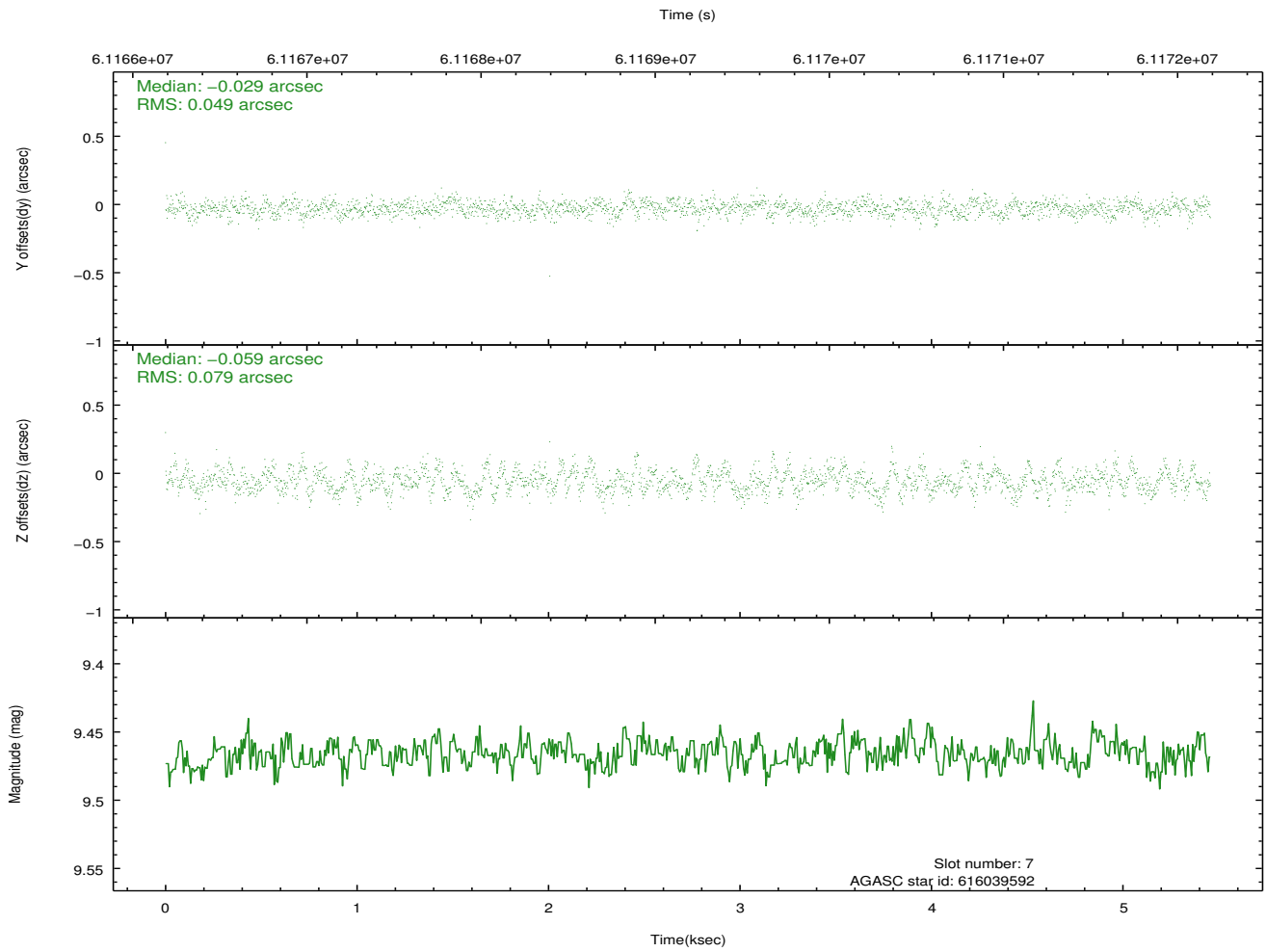
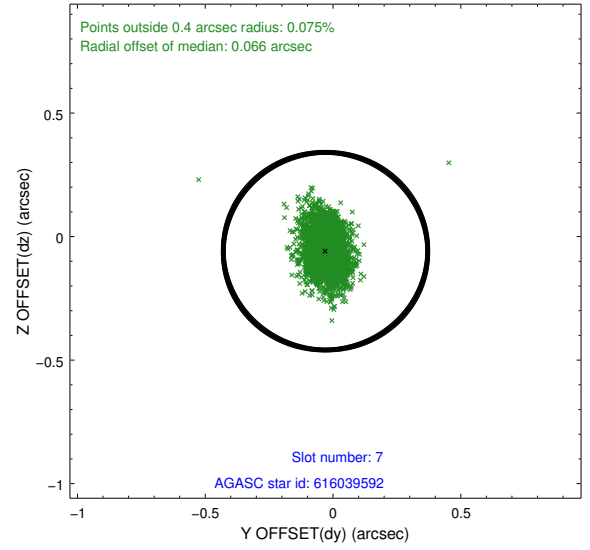
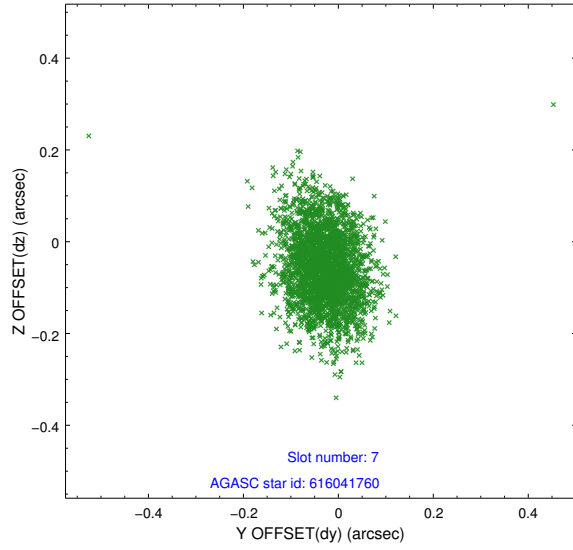
2.4.3 Slot 5



2.4.4 Slot 6

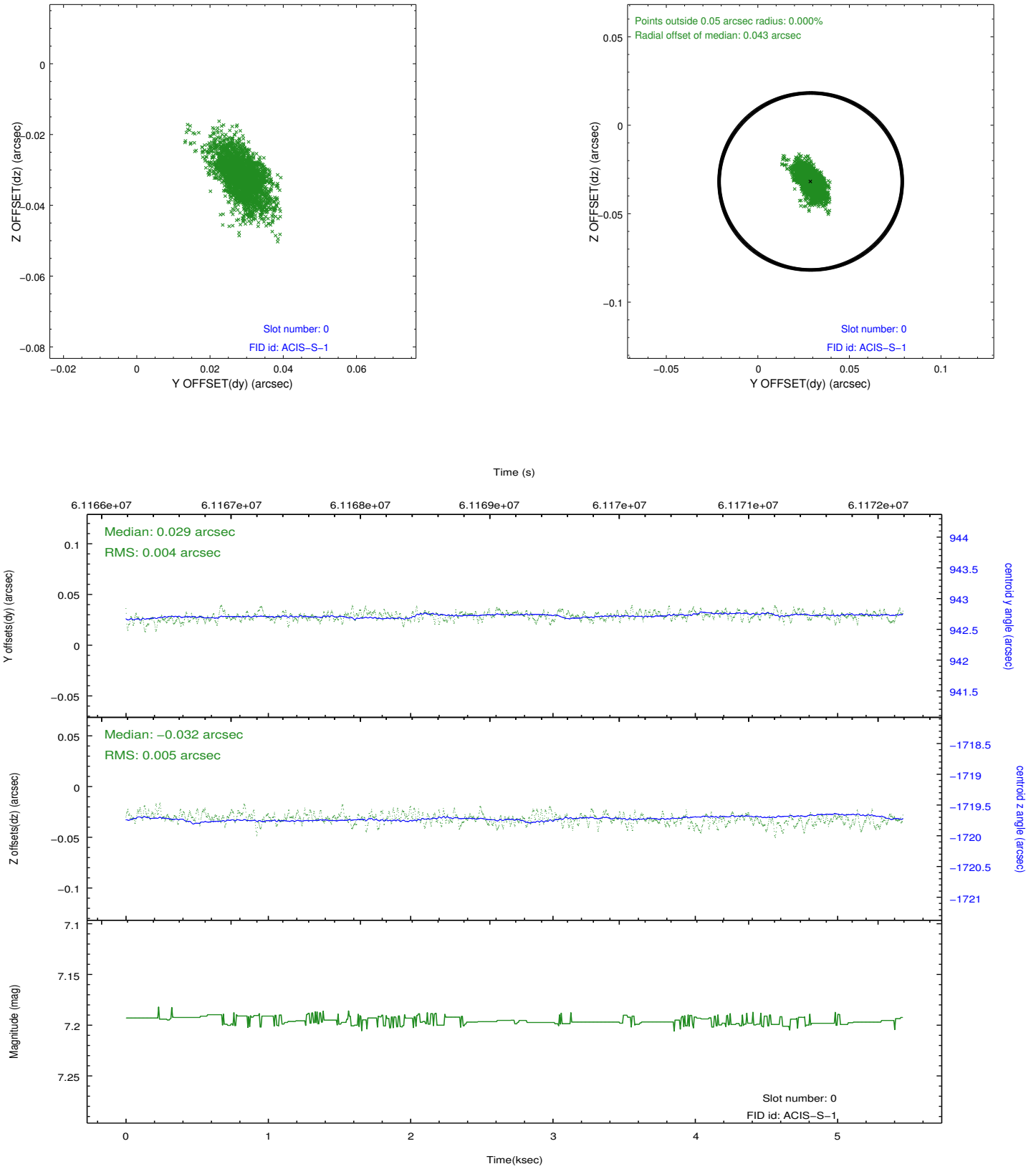


2.4.5 Slot 7

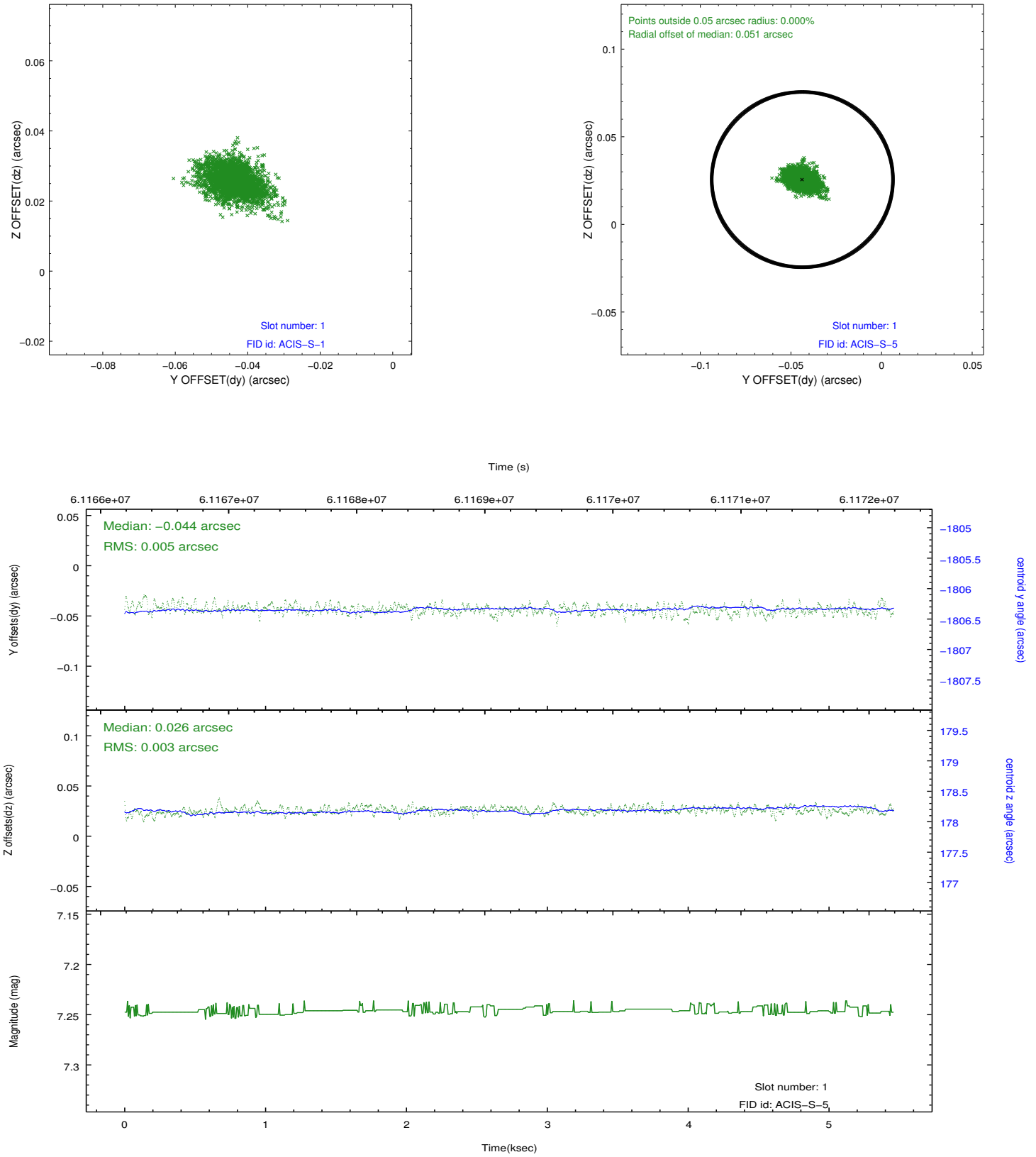


2.5 FID Slots

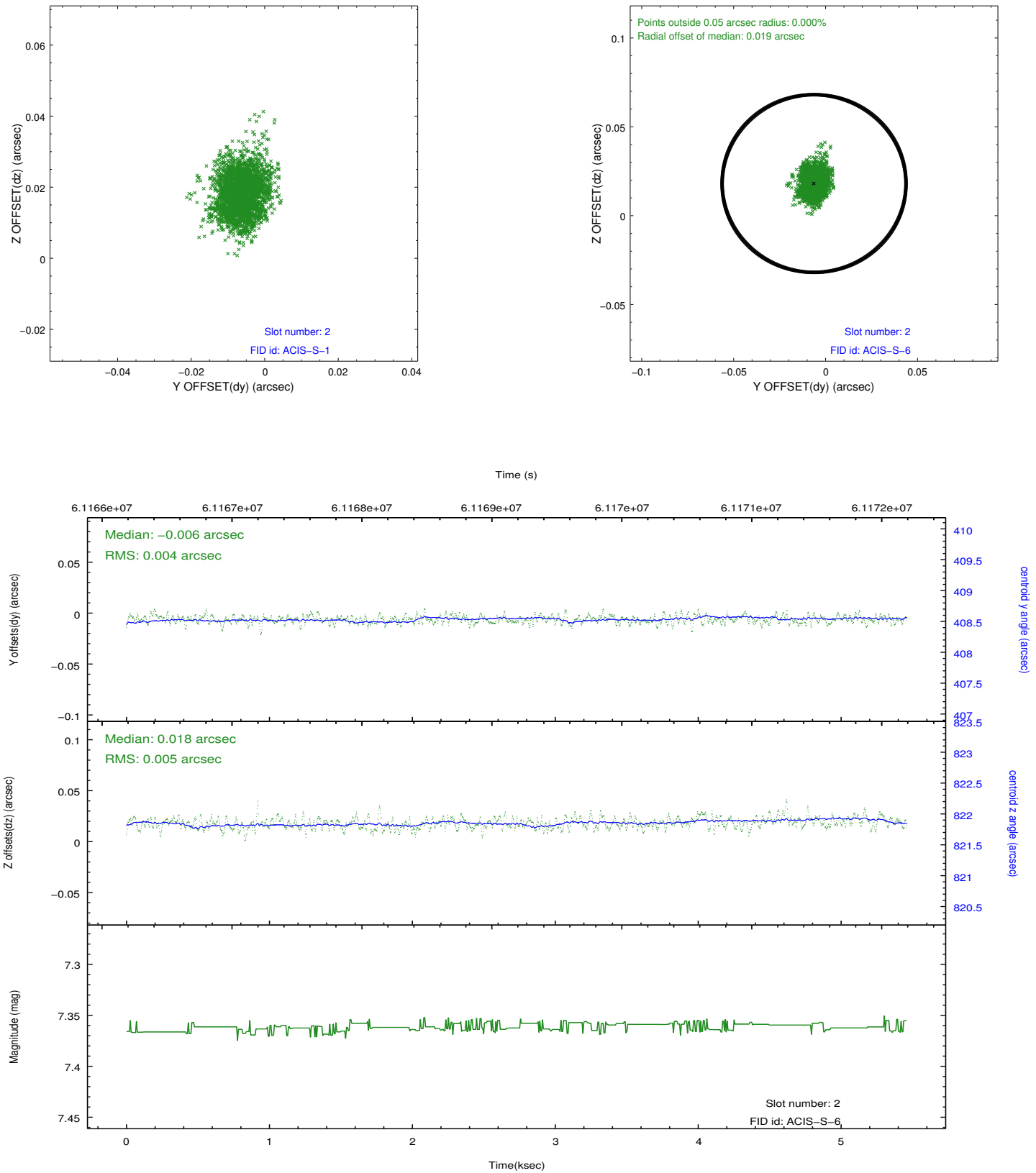
2.5.1 Slot 0



2.5.2 Slot 1



2.5.3 Slot 2



3 Point Sources

A Summary

A.1 Status

V&V Scientist	Joy Nichols
V&V Date (YYYY-MM-DD)	2010.03.05
V&V Edition	1
V&V Disposition and Status	OK
V&V Charge Time	4.913

A.2 Comments

Charge time:

Charge time for this ObsId remains at original value of 4.913 ksec, although with the current processing the charge time would have been 4.949 ksec.

=====

The focal plane temperature is approximately -110 C during this observation. This reprocessing of the data applies no CTI correction because none is available for this temperature at present.

The ACIS CTI correction has not been calibrated at this temperature, because it was early in the mission, and ACIS had not yet been lowered to the standard -119.7 C. Both front and back illuminated chips are affected. However a T_GAIN correction has been applied to the BI chips (ACIS-5 and ACIS-7) data included here.

The ACIS spectral response calibration is less accurate at these warmer temperatures than it is at -119.7 C. Users whose science objectives depend on the most accurate spectral response (ie: fitting line-rich spectra) may notice an effect. Users whose science objectives do not depend on the most accurate spectral response should not notice an effect.