

V&V Reference Report

L2 ASCDS Version : 8.4.4

Observation 7810 - L2 Version 2
Chandra X-Ray Center

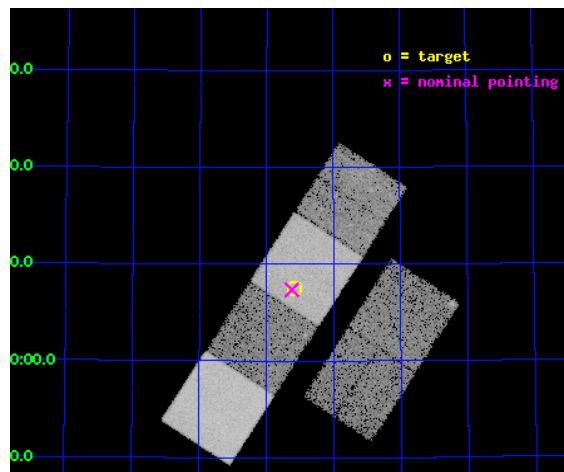
L2 Processing Date : Apr 29 2012

Contents

1	Front	2
2	OBI	3
2.1	OBI	3
2.1.1	Images	3
2.1.2	Bias	3
2.1.3	Parameters	4
2.1.4	Events	4
2.2	Compared Parameters	5
2.3	Aspect	6
2.4	Star Slots	9
2.4.1	Slot 3	9
2.4.2	Slot 4	10
2.4.3	Slot 5	11
2.4.4	Slot 6	12
2.4.5	Slot 7	13
2.5	FID Slots	14
2.5.1	Slot 0	14
2.5.2	Slot 1	15
2.5.3	Slot 2	16
A	Summary	17
A.1	Status	17
A.2	Comments	17

1 Front

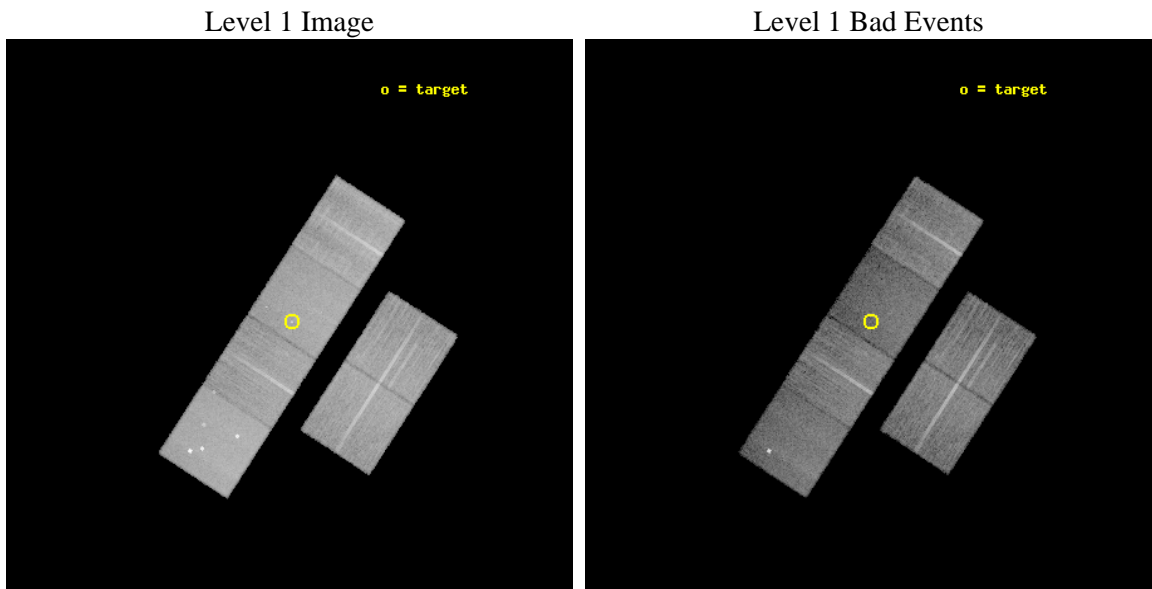
seq_num	701474	Sequence number
obs_id	7810	Observation id
title	The Chandra-RBGS Survey of a Complete Sample of Luminous Infrared Galaxies	Proposal title
observer	Professor David Sanders	Principal investigator
object	VV 250a	Source name
dtcycle	0	
cycle	P	events from which exps? Prim/Second/Both
ra_targ	198.895833	Observer's specified target RA [deg]
dec_targ	62.124667	Observer's specified target Dec [deg]
ra_nom	198.90521719454	Nominal RA [deg]
dec_nom	62.122561999236	Nominal Dec [deg]
roll_nom	302.92231286784	Nominal Roll [deg]
revision	2	Processing version of data
ontime	15042.889261484	Sum of GTIs [s]
livetime	14852.407139915	Livetime [s]
ontime2	15039.689311266	Sum of GTIs [s]
ontime3	15042.766141474	Sum of GTIs [s]
ontime5	15042.848221481	Sum of GTIs [s]
ontime6	15039.566191256	Sum of GTIs [s]
ontime7	15042.889261484	Sum of GTIs [s]
ontime8	15039.484131217	Sum of GTIs [s]
l2events	184385	Number of level 2 events



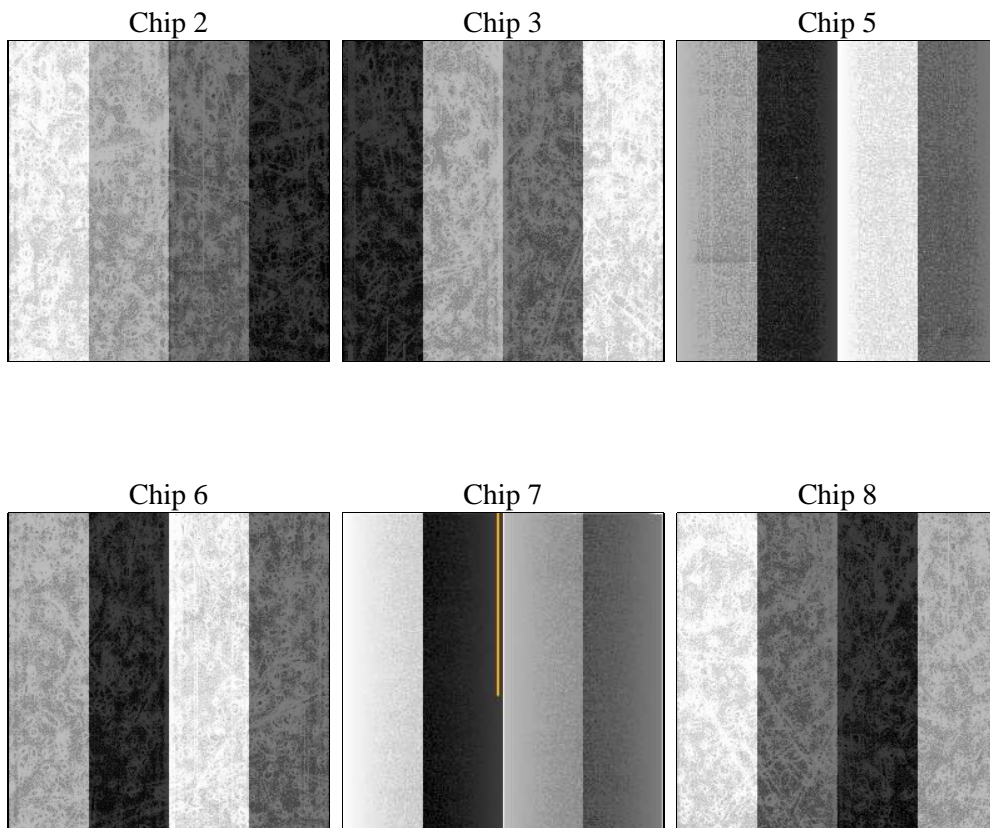
2 OBI

2.1 OBI

2.1.1 Images



2.1.2 Bias



2.1.3 Parameters

obi_num	0	Obi number	sched_exp_time	15000.000000	[s] Scheduled observation exposure time
ascdsver	8.4.4	Processing system revision	ontime	15042.889261484	Sum of GTIs [s]
caldsver	4.4.9	 	ontime2	15039.689311266	Sum of GTIs [s]
date	2012-04-30T01:25:55	Date and time of file creation	ontime3	15042.766141474	Sum of GTIs [s]
revision	2	Processing version of data	ontime5	15042.848221481	Sum of GTIs [s]
			ontime6	15039.566191256	Sum of GTIs [s]
			ontime7	15042.889261484	Sum of GTIs [s]
			ontime8	15039.484131217	Sum of GTIs [s]
			l1events	841934	Number of level 1 events

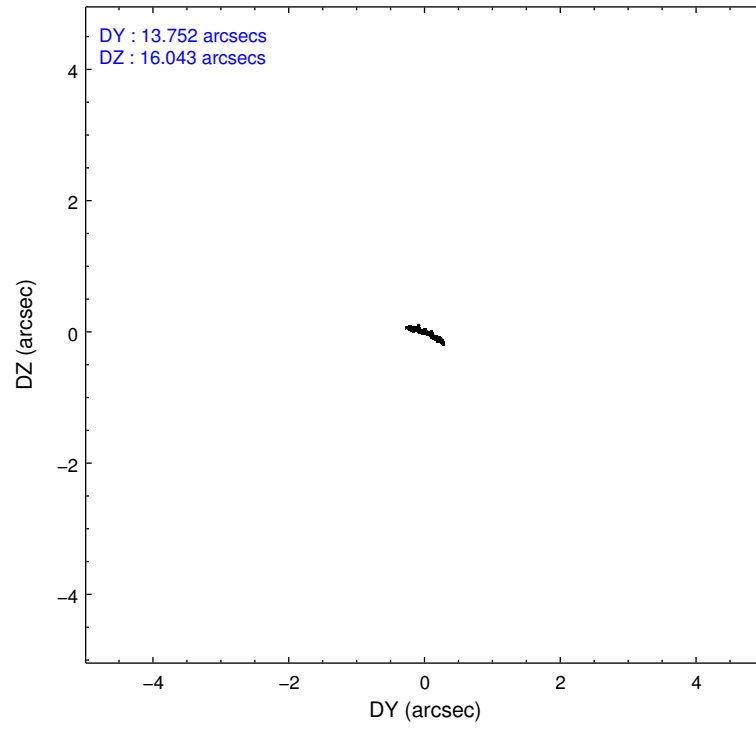
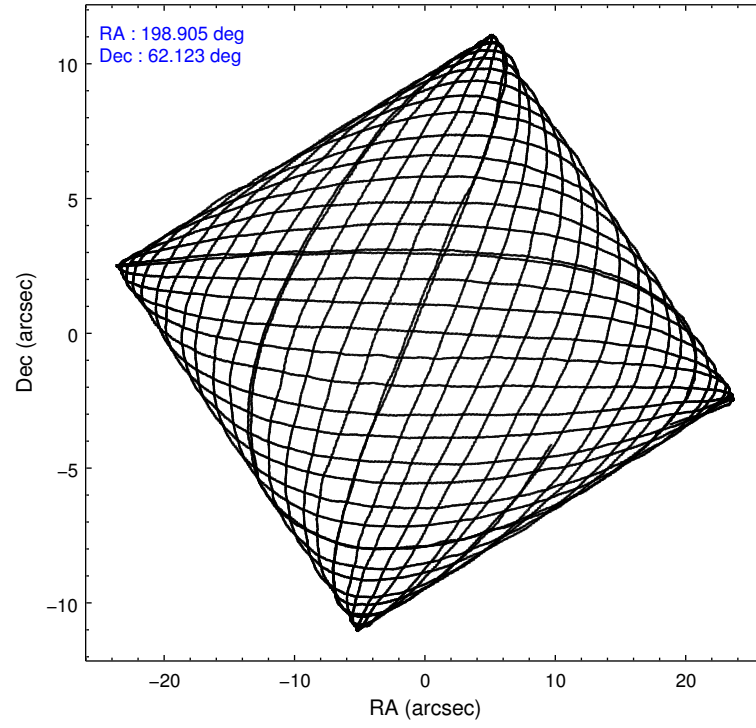
2.1.4 Events

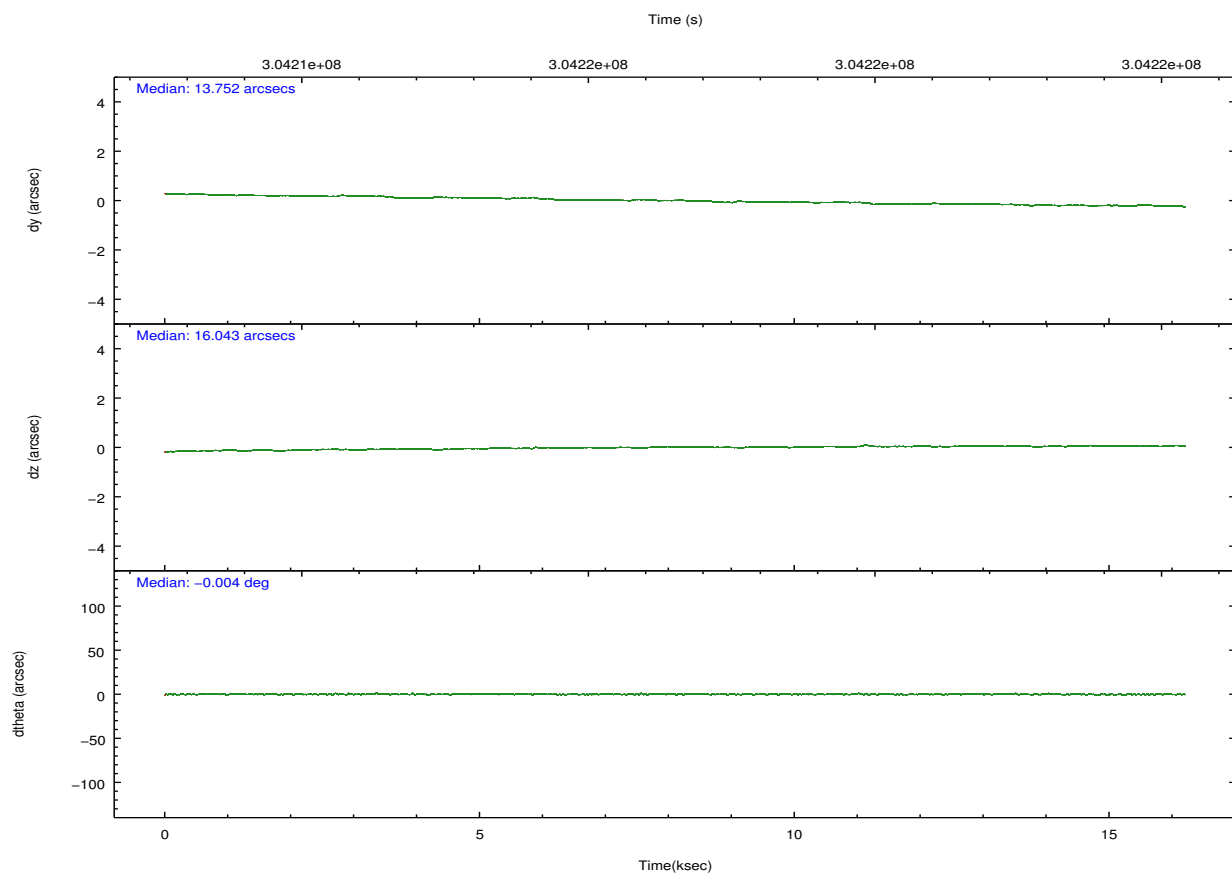
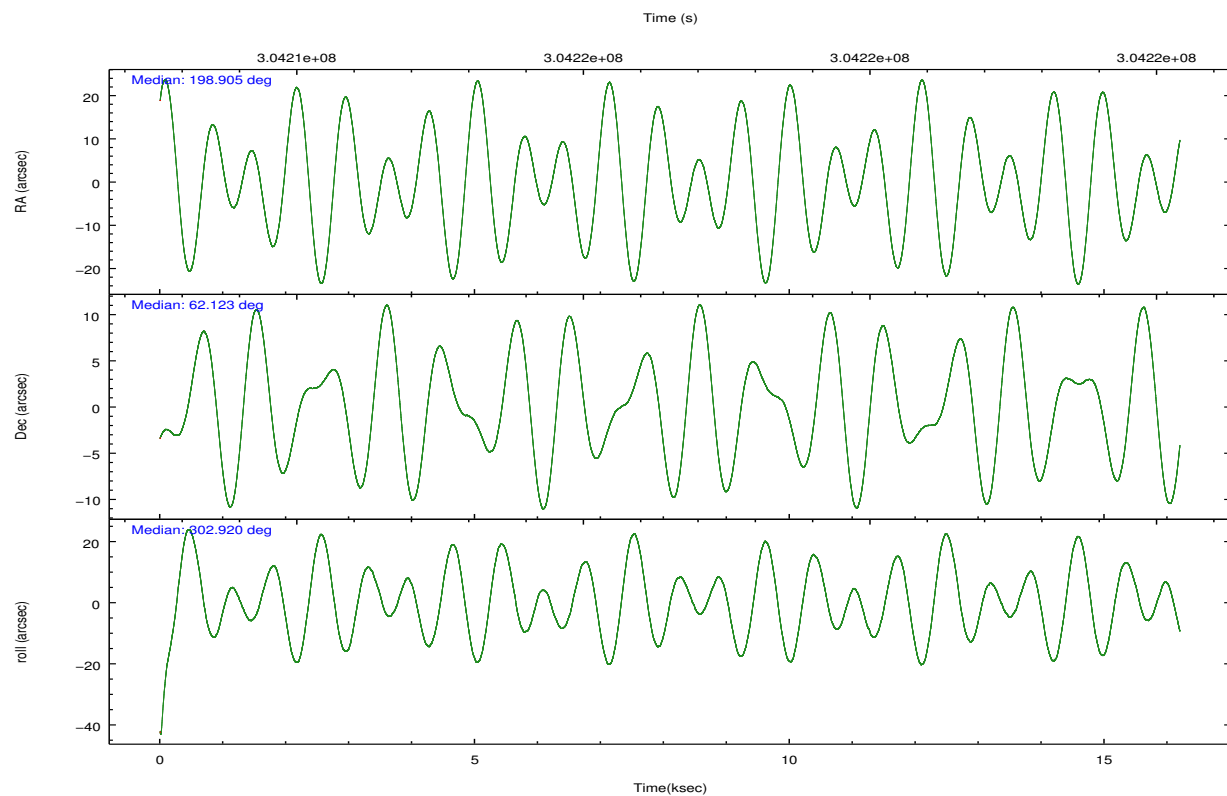
	ccd 2	ccd 3	ccd 5	ccd 6	ccd 7	ccd 8		ccd 2	ccd 3	ccd 5	ccd 6	ccd 7	ccd 8
level 1 events	129657	120184	176107	123121	136971	155894	grade 0 events	4182	3995	12647	4437	5987	12263
rejected events	117844	108981	86878	110591	74150	116876		3%	3%	7%	3%	4%	7%
rejected %	90%	90%	49%	89%	54%	74%	grade 1 events	71	77	311	63	163	145
								0%	0%	0%	0%	0%	0%
							grade 2 events	2992	2444	25827	2786	12768	8682
								2%	2%	14%	2%	9%	5%
							grade 3 events	1178	1278	3558	1392	5835	4100
								0%	1%	2%	1%	4%	2%
							grade 4 events	1267	1270	3414	1402	5880	3900
								0%	1%	1%	1%	4%	2%
							grade 5 events	4028	4916	13338	4951	14522	7139
								3%	4%	7%	4%	10%	4%
							grade 6 events	2199	2219	43811	2521	32372	10076
								1%	1%	24%	2%	23%	6%
							grade 7 events	113740	103985	73201	105569	59444	109589
								87%	86%	41%	85%	43%	70%

2.2 Compared Parameters

Parameter	Planned	Actual	Parameter	Planned	Actual
Instrument	ACIS	ACIS	Obspar format version number	7	7
Detector	ACIS-235678	ACIS-235678	Obspar file type	PREDICTED	ACTUAL
Grating	NONE	NONE	Obspar update status	NONE	UPDATED
Data mode	VFAINT	VFAINT	CCD I0 on	N	N
Observation mode	POINTING	POINTING	CCD I1 on	N	N
[deg] Pointing RA	198.852738	198.9052171945432	CCD I2 on	O1	Y
[deg] Pointing Dec	62.134688	62.12256199923586	CCD I3 on	O2	Y
[deg] Pointing Roll	302.812100	302.9223128678448	CCD S0 on	N	N
[mm] SIM focus pos	-0.684267	-0.6828225247311905	CCD S1 on	O3	Y
[mm] SIM defocus	0	0.001444936568705701	CCD S2 on	O5	Y
[mm] SIM translation stage pos	-190.132523	-190.1425803651734	CCD S3 on	Y	Y
[mm] SIM translation stage offset	0	0.01005778216563158	CCD S4 on	O4	Y
[s] Observation start time (MET)	304209622.184000	304208110.64412	CCD S5 on	N	N
Observation start date	2007-08-22T22:39:17	2007-08-22T22:15:10	Number of optional ACIS chips dropped	0	0
[s] Observation end time (MET)	304224622.184000	304225653.00746	On-chip summing requested	N	N
Observation end date	2007-08-23T02:49:17	2007-08-23T03:07:33	Subarray requested	NONE	NONE
Read mode	TIMED	TIMED	Alternating exposures requested	N	N
			[s] Primary exposure time	0.000000	3.2

2.3 Aspect



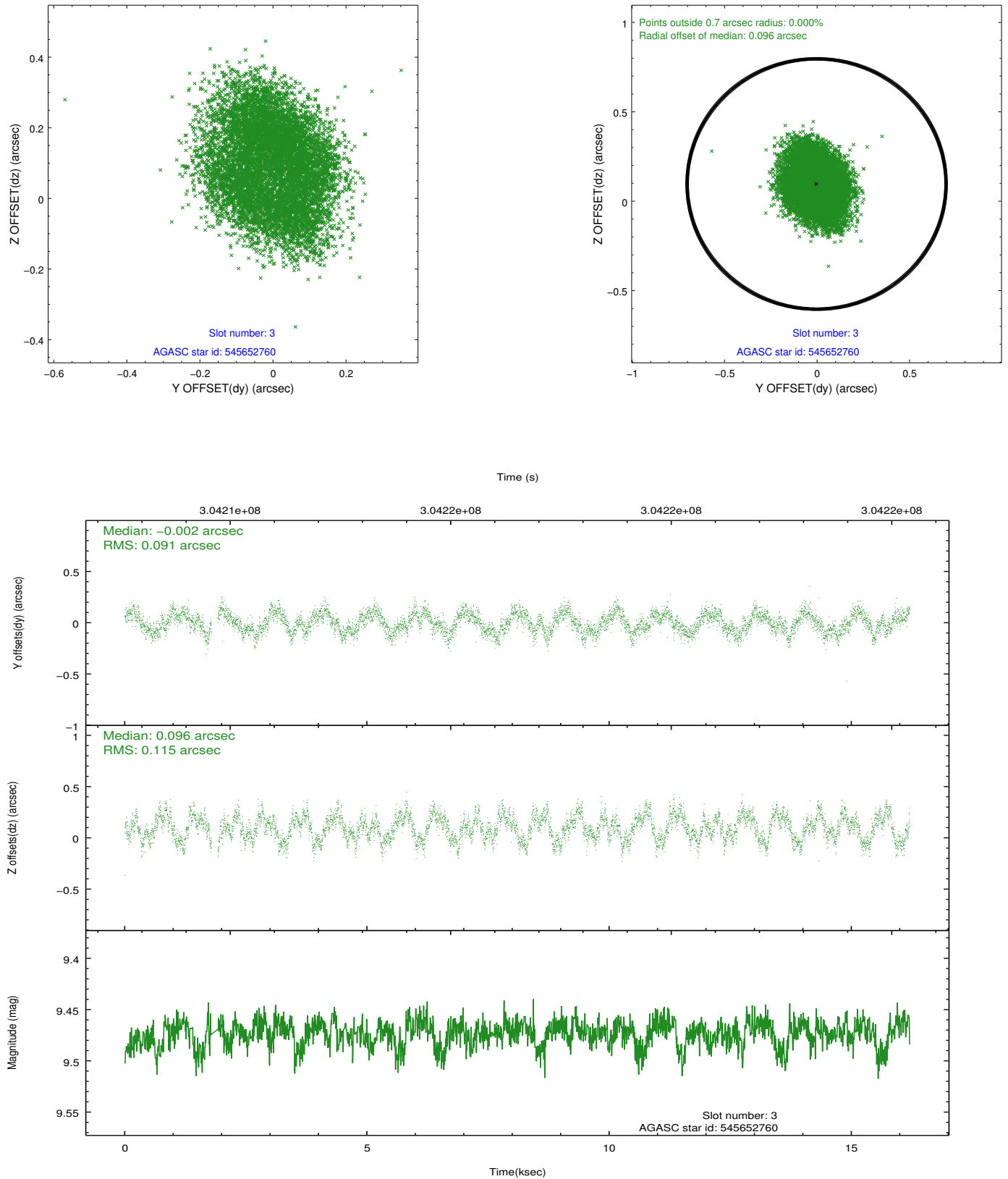


Slot Statistics

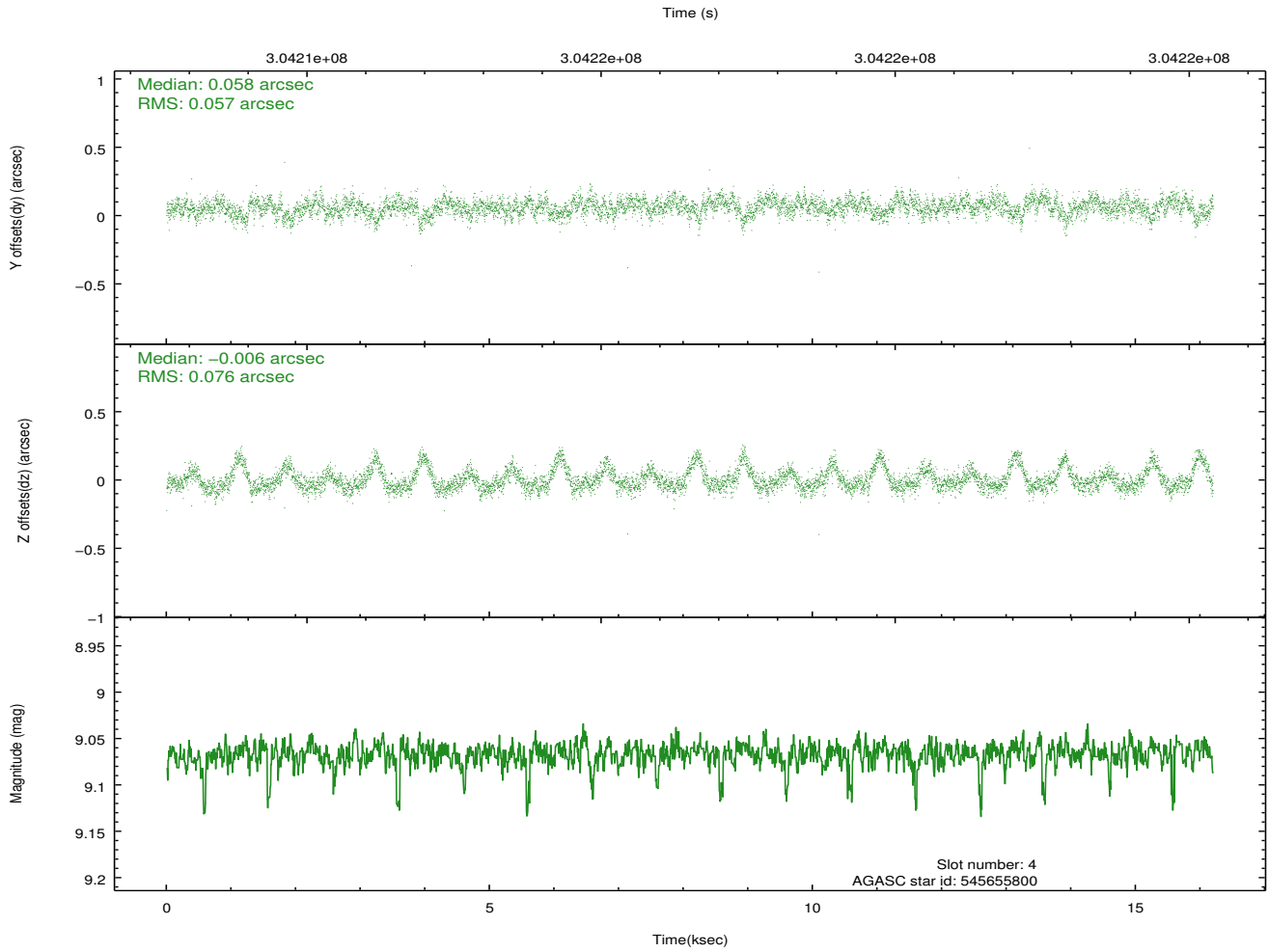
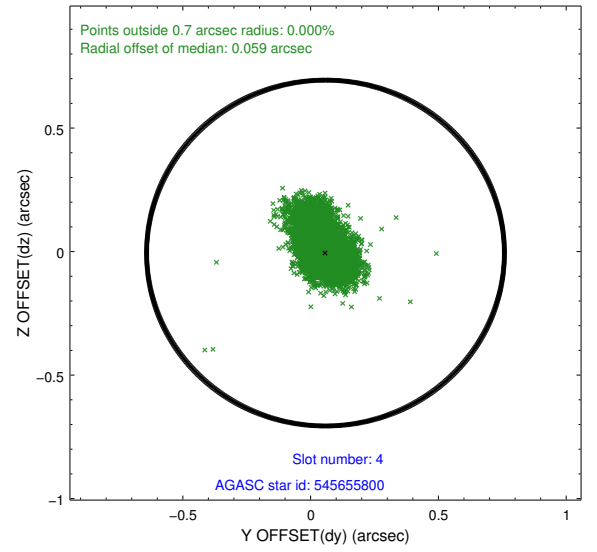
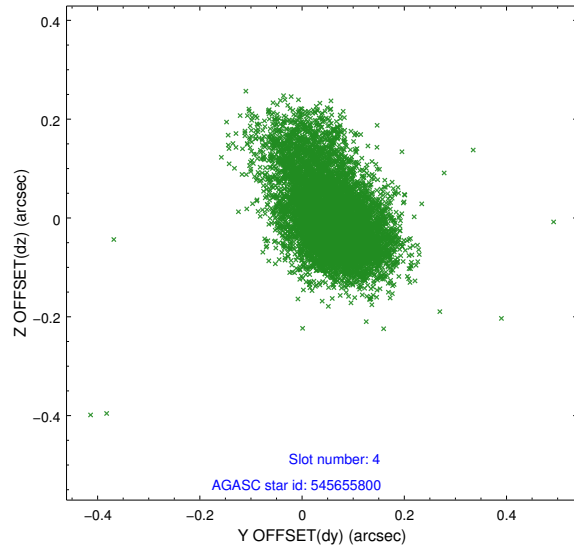
slot	status	id	mag	n_pts	med_dy	med_dz	dr1	dr2	ra	dec	mean_y	mean_z
0	FID	ACIS-S-2	7.09	3952	-0.061	-0.033	0.011	0.016	0.000000	0.000000	-766.74	-1737.42
1	FID	ACIS-S-4	7.19	3951	0.202	0.038	0.009	0.016	0.000000	0.000000	2146.67	170.87
2	FID	ACIS-S-5	7.22	3952	-0.173	0.004	0.011	0.019	0.000000	0.000000	-1819.36	164.79
3	GUIDE	545652760	9.47	7831	-0.002	0.096	0.159	0.239	199.140427	62.441625	-670.06	1002.14
4	GUIDE	545655800	9.07	7885	0.058	-0.006	0.094	0.180	199.740269	61.884582	1564.16	783.46
5	GUIDE	545659832	10.03	7886	0.041	-0.082	0.173	0.269	199.353485	61.879660	1229.09	217.86
6	GUIDE	545788632	8.85	7894	-0.171	-0.112	0.089	0.149	200.158236	62.362853	472.62	2289.23
7	GUIDE	546048344	10.22	7893	0.070	0.095	0.182	0.286	197.461578	62.517086	-2429.76	-1182.54

2.4 Star Slots

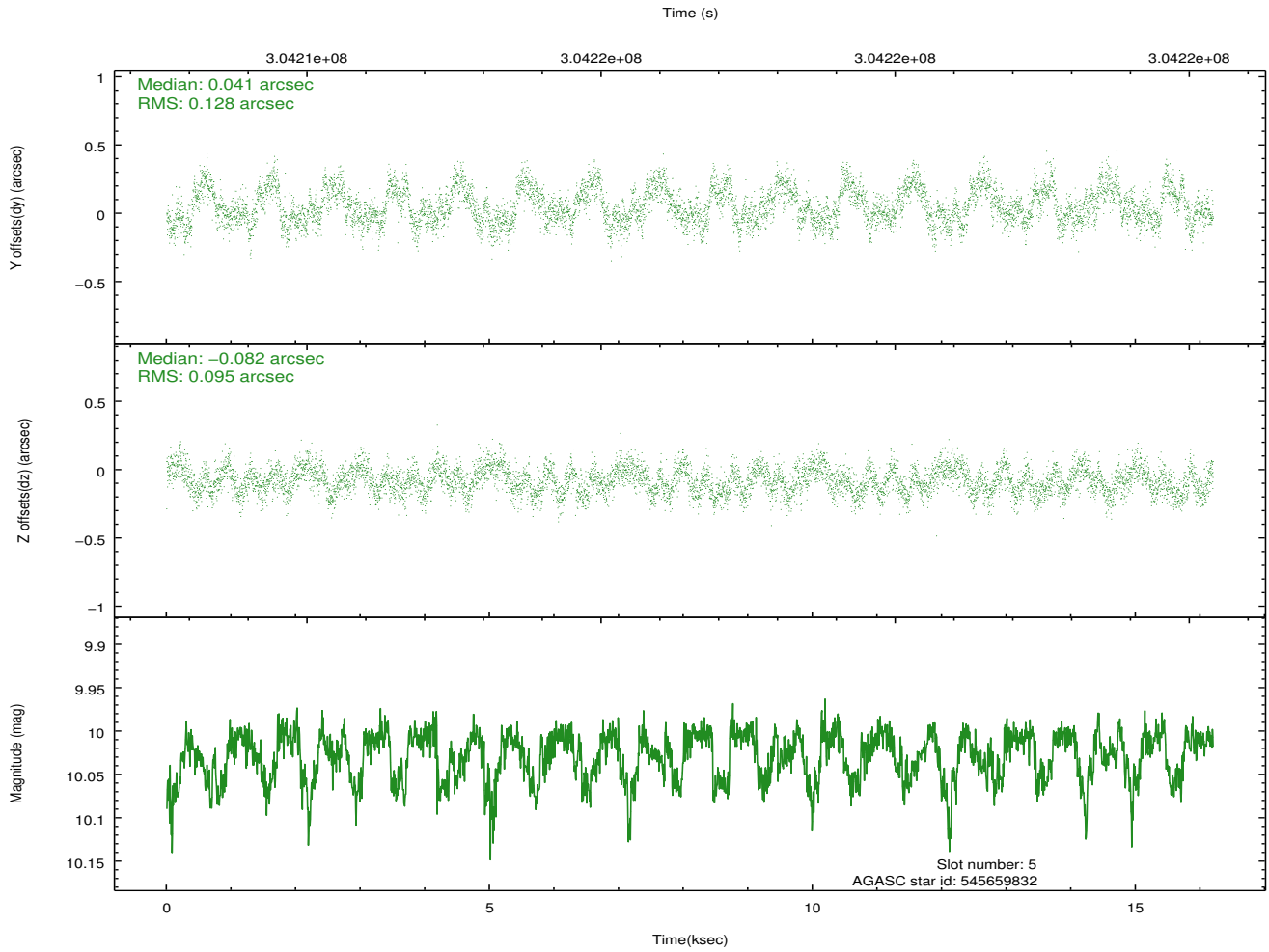
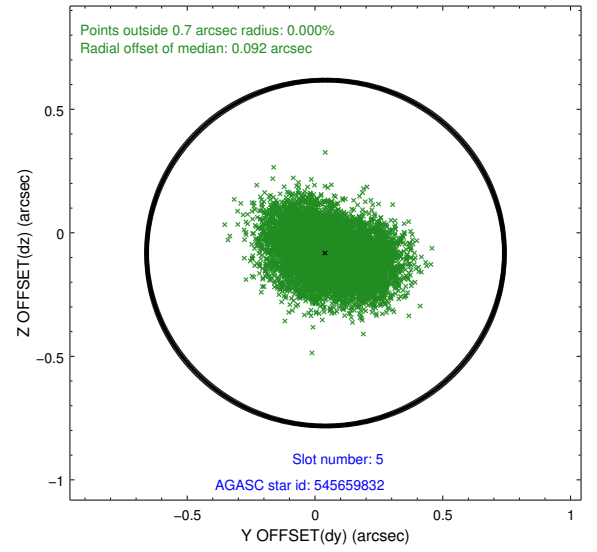
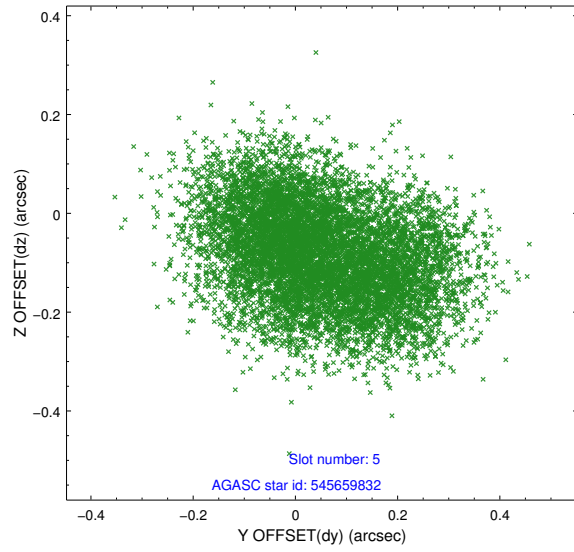
2.4.1 Slot 3



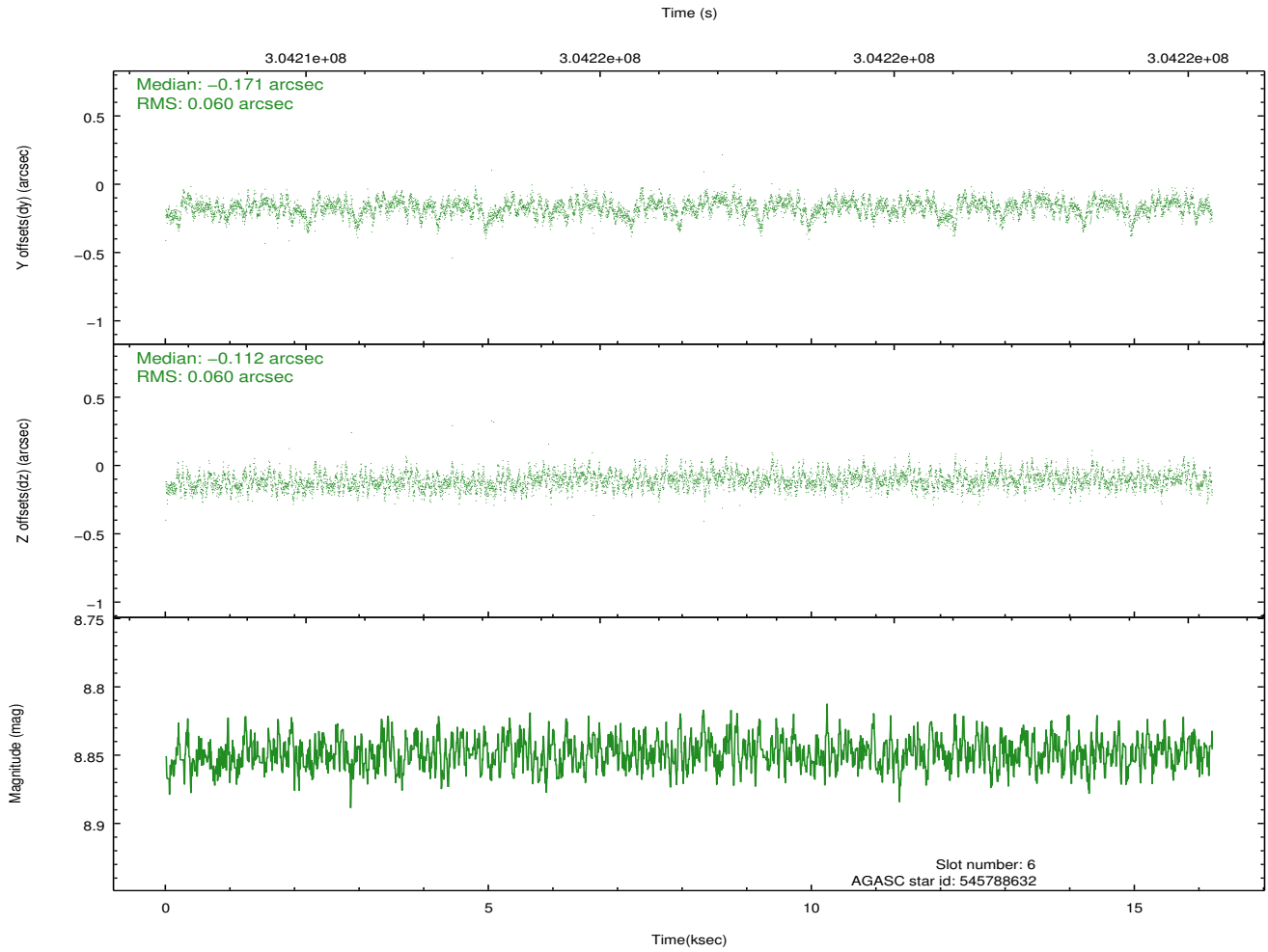
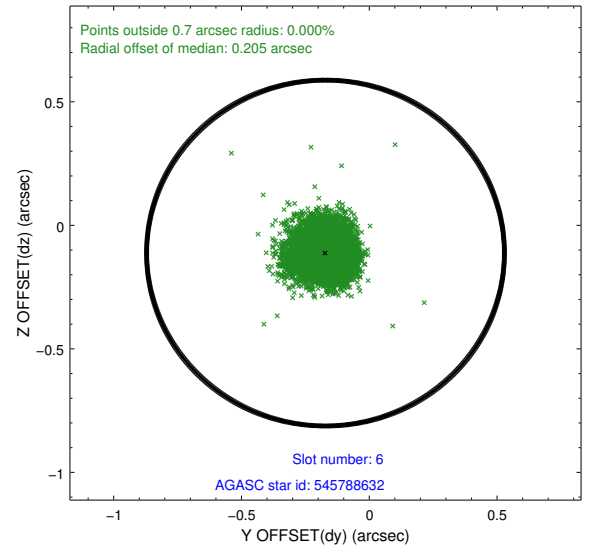
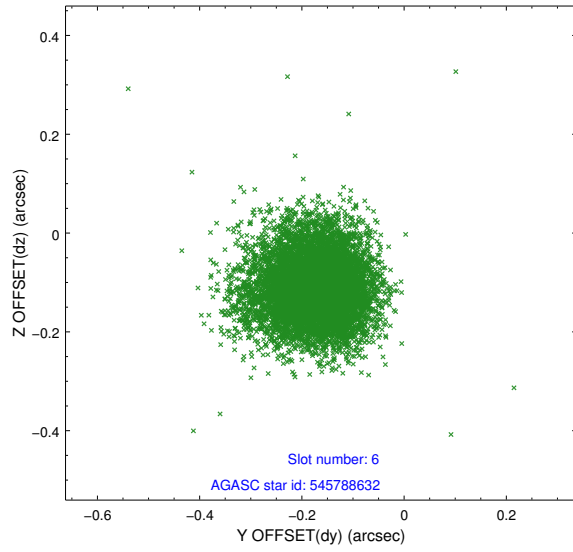
2.4.2 Slot 4



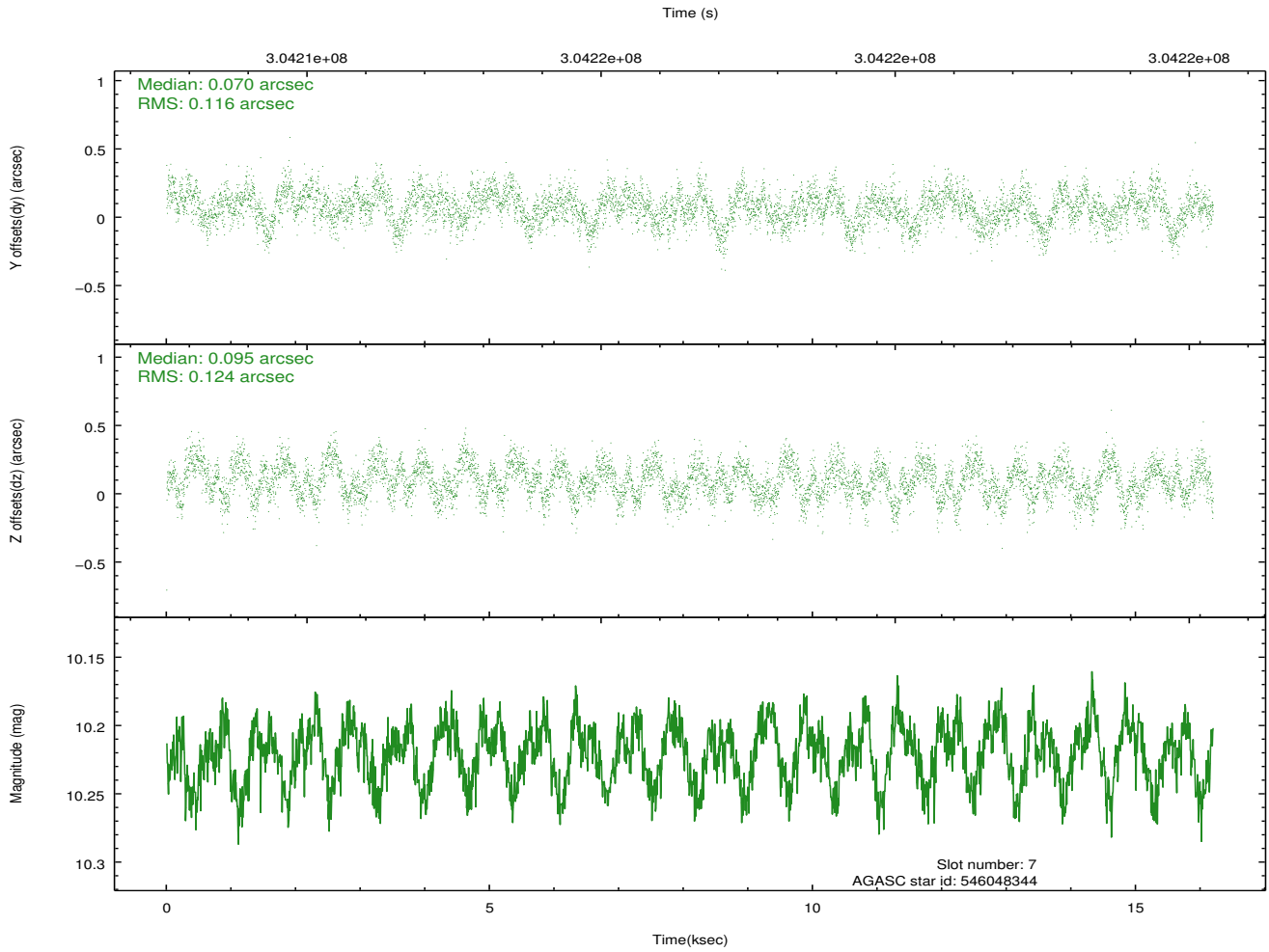
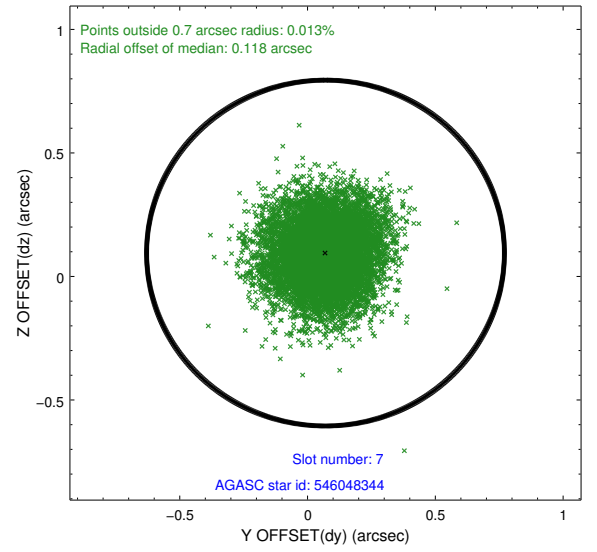
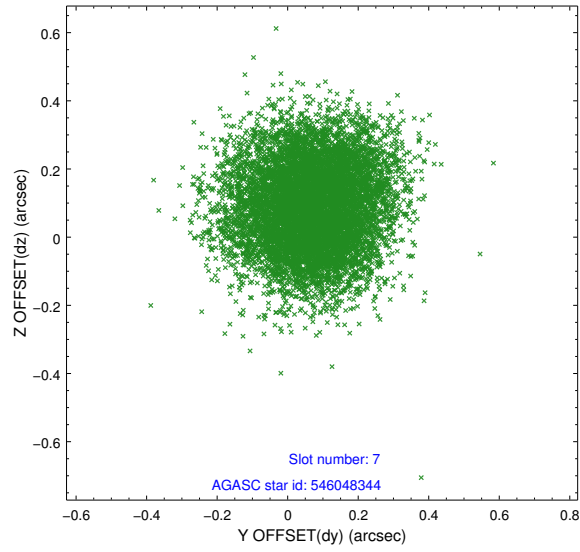
2.4.3 Slot 5



2.4.4 Slot 6

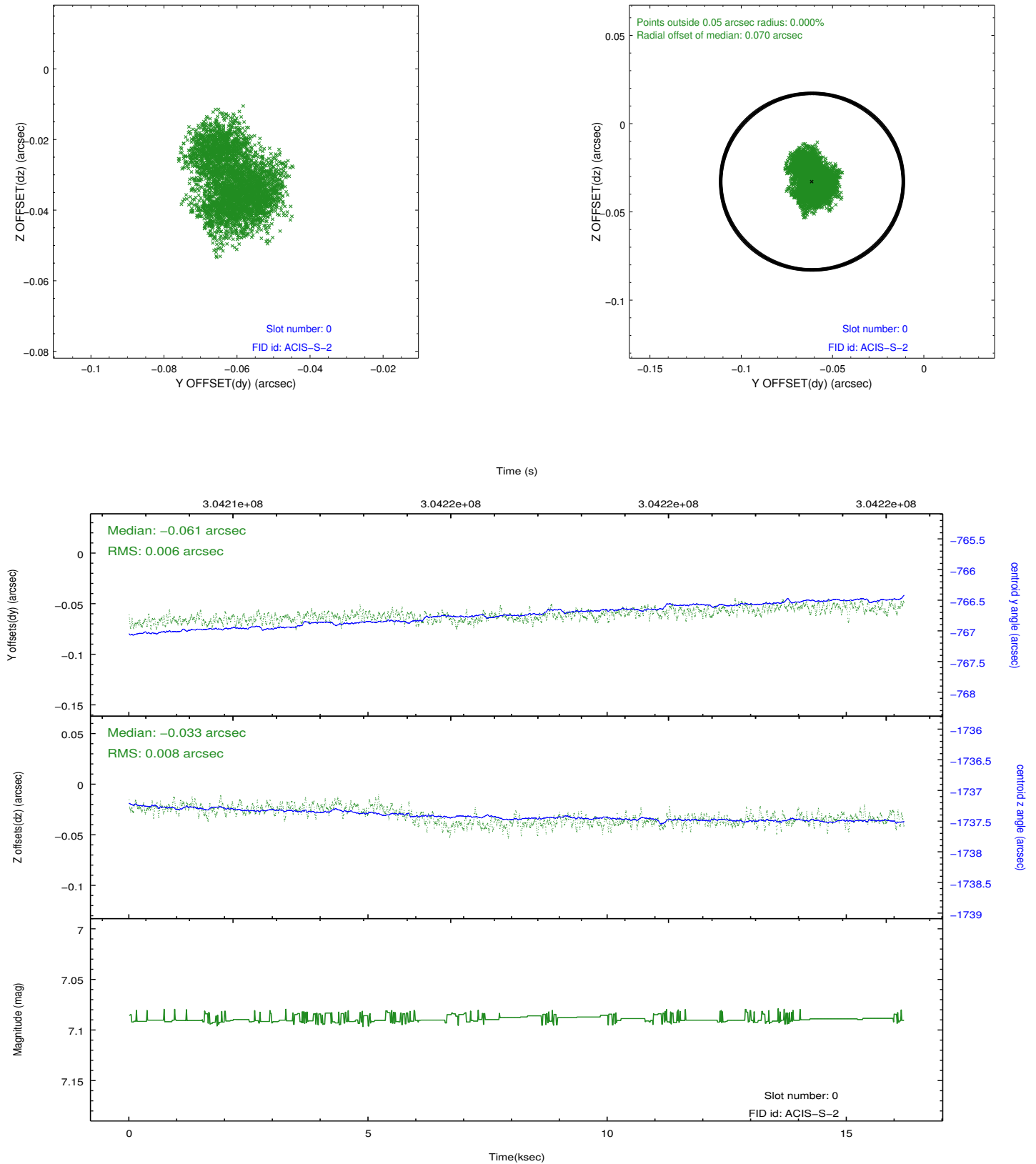


2.4.5 Slot 7

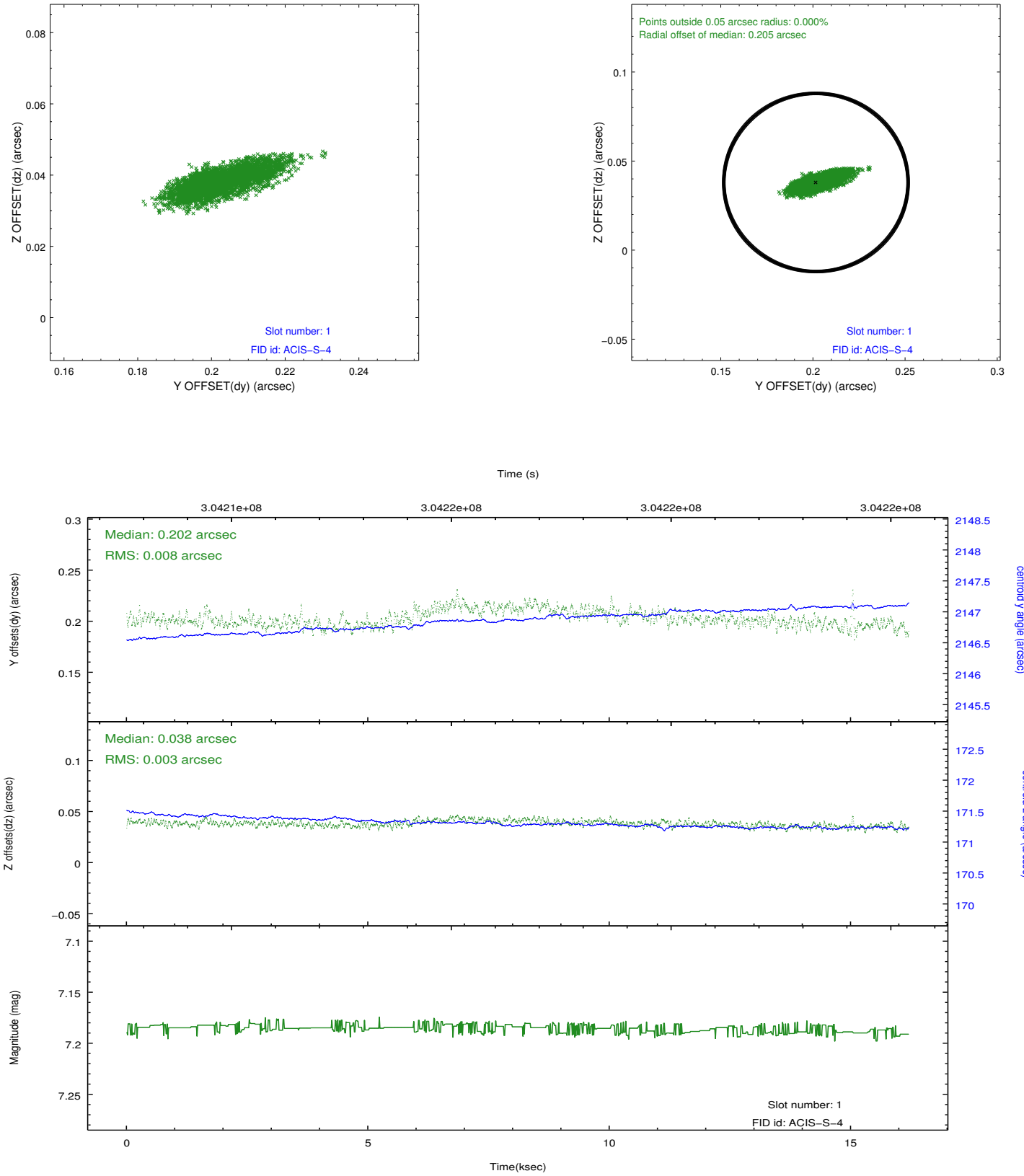


2.5 FID Slots

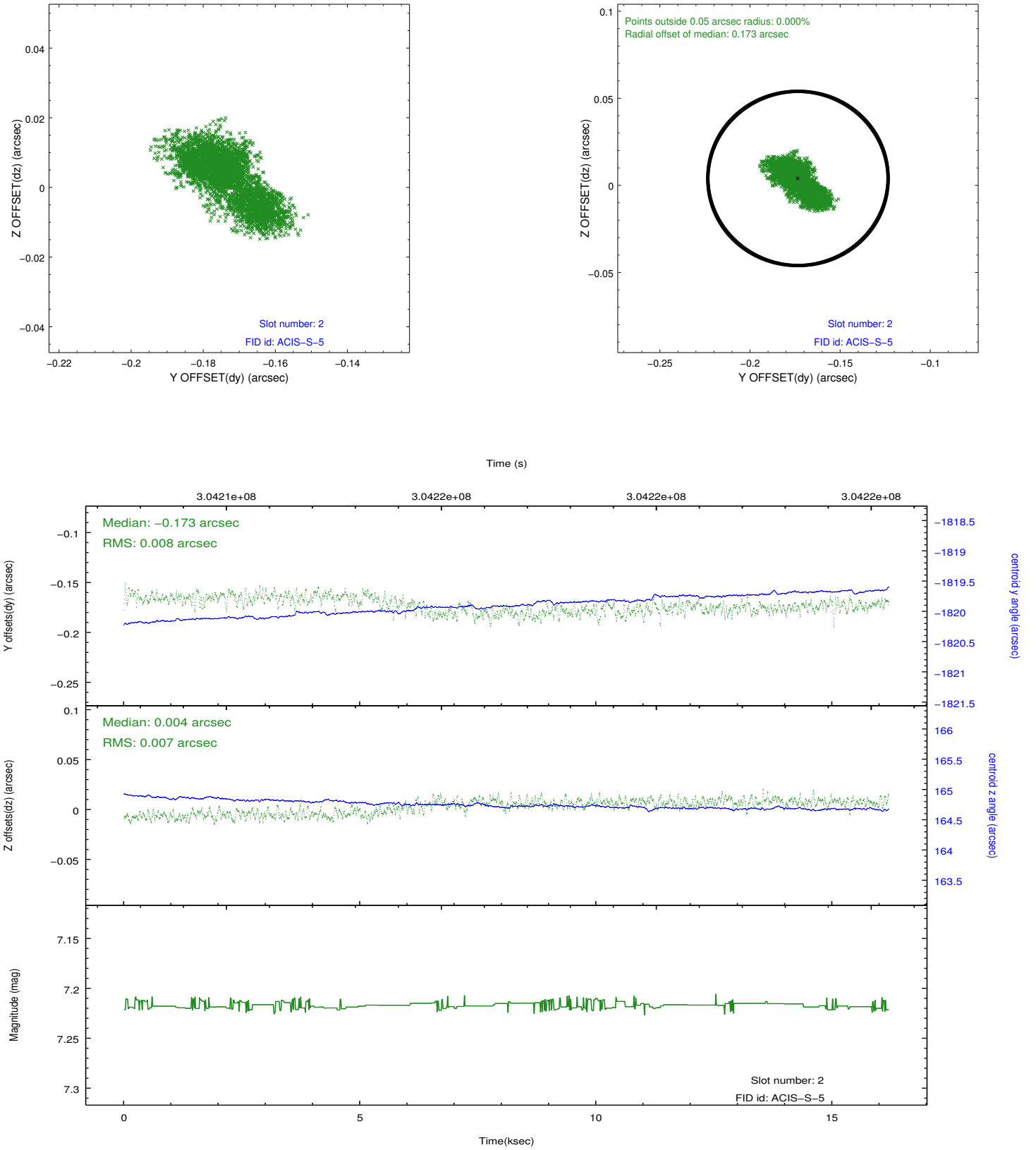
2.5.1 Slot 0



2.5.2 Slot 1



2.5.3 Slot 2



A Summary

A.1 Status

V&V Scientist	Beth Sundheim
V&V Date (YYYY-MM-DD)	2012.05.02
V&V Edition	1
V&V Disposition and Status	OK
V&V Charge Time	15.0431999

A.2 Comments