

V&V Reference Report

L2 ASCDS Version : 8.4.3.1

Observation 6990 - L2 Version 2
Chandra X-Ray Center

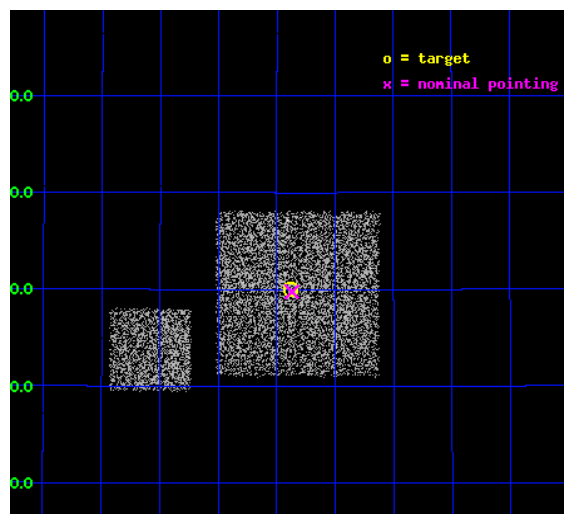
L2 Processing Date : Apr 7 2012

Contents

1	Front	2
2	OBI	3
2.1	OBI	3
2.1.1	Images	3
2.1.2	Bias	3
2.1.3	Parameters	4
2.1.4	Events	4
2.2	Compared Parameters	5
2.3	Aspect	6
2.4	Star Slots	9
2.4.1	Slot 3	9
2.4.2	Slot 4	10
2.4.3	Slot 5	11
2.4.4	Slot 6	12
2.4.5	Slot 7	13
2.5	FID Slots	14
2.5.1	Slot 0	14
2.5.2	Slot 1	15
2.5.3	Slot 2	16
A	Summary	17
A.1	Status	17
A.2	Comments	17

1 Front

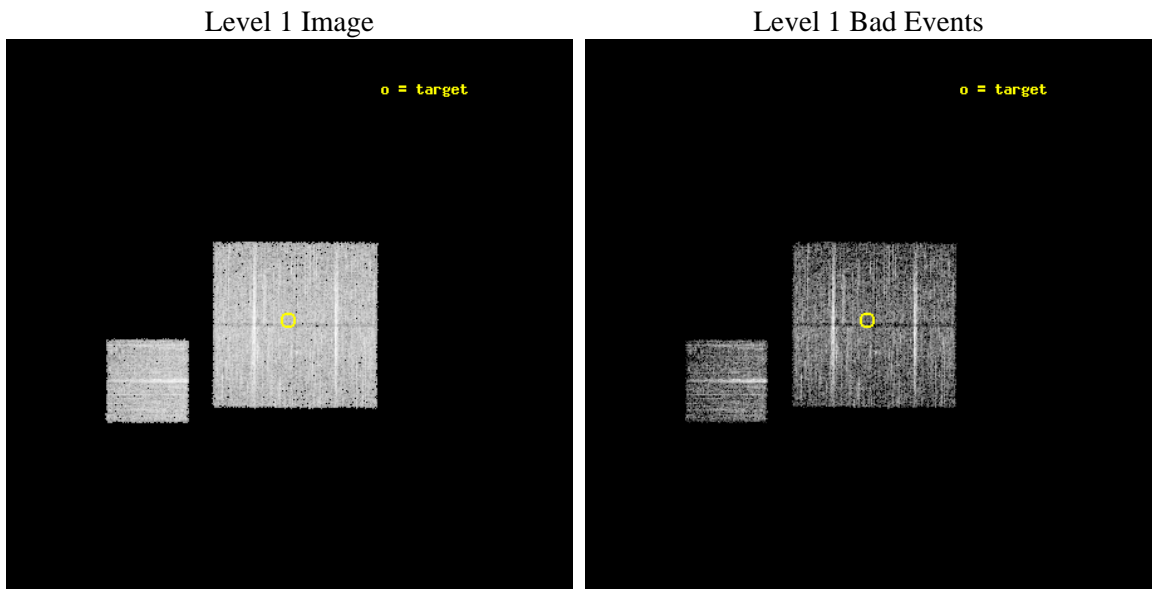
seq_num	900406	Sequence number
obs_id	6990	Observation id
title	Chandra Large Scale Survey of the NOAO Bootes Deep Field (A)	Propo
observer	Dr Stephen Murray	Principal investigator
object	Bootes2 12	Source name
dtcycle	0	
cycle	P	events from which exps? Prim/Second/Both
ra_targ	219.09493	Observer's specified target RA [deg]
dec_targ	35.500315	Observer's specified target Dec [deg]
ra_nom	219.09268082739	Nominal RA [deg]
dec_nom	35.496049379246	Nominal Dec [deg]
roll_nom	270.20999443073	Nominal Roll [deg]
revision	2	Processing version of data
ontime	4845.2590469718	Sum of GTIs [s]
livetime	4781.9521704953	Livetime [s]
ontime0	4848.4000372887	Sum of GTIs [s]
ontime1	4845.2590469718	Sum of GTIs [s]
ontime2	4848.4000372887	Sum of GTIs [s]
ontime3	4845.2590469718	Sum of GTIs [s]
ontime6	4848.4000372887	Sum of GTIs [s]
l2events	13663	Number of level 2 events



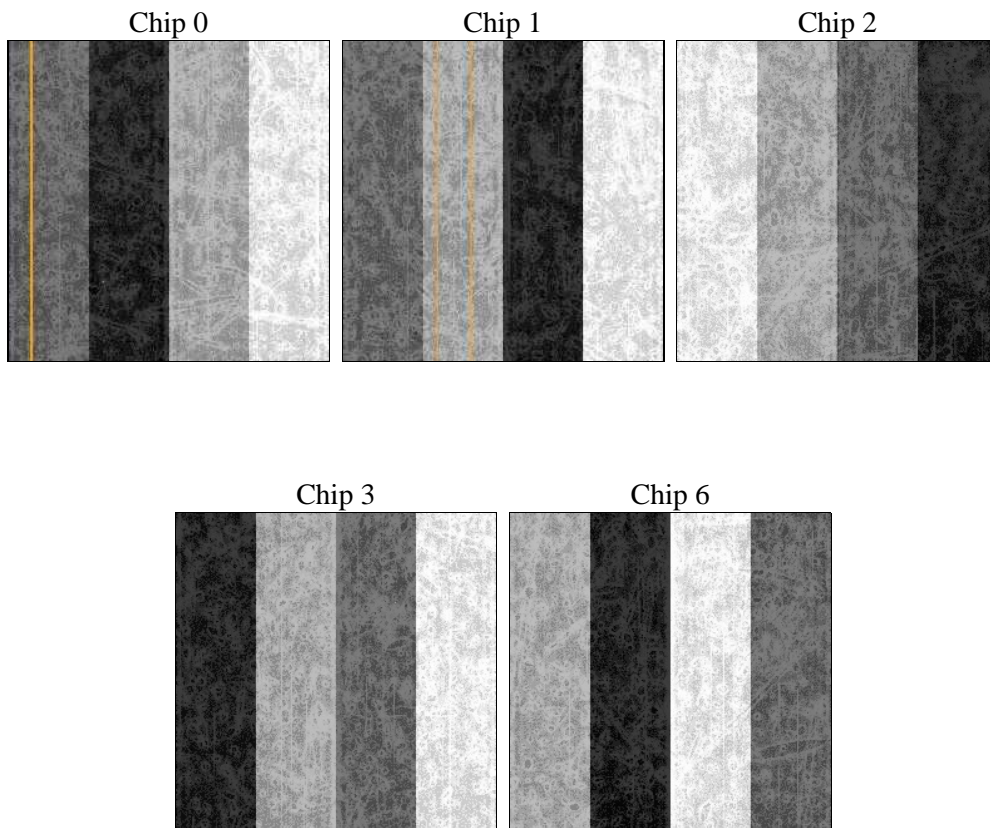
2 OBI

2.1 OBI

2.1.1 Images



2.1.2 Bias



2.1.3 Parameters

obi_num	0	Obi number	sched_exp_time	4700.000000	[s] Scheduled observation exposure time
ascdsver	8.4.3.1	Processing system revision	ontime	4845.2590469718	Sum of GTIs [s]
caldsver	4.4.9	 	ontime0	4848.4000372887	Sum of GTIs [s]
date	2012-04-07T09:03:44	Date and time of file creation	ontime1	4845.2590469718	Sum of GTIs [s]
revision	2	Processing version of data	ontime2	4848.4000372887	Sum of GTIs [s]
			ontime3	4845.2590469718	Sum of GTIs [s]
			ontime6	4848.4000372887	Sum of GTIs [s]
			l1events	182977	Number of level 1 events

2.1.4 Events

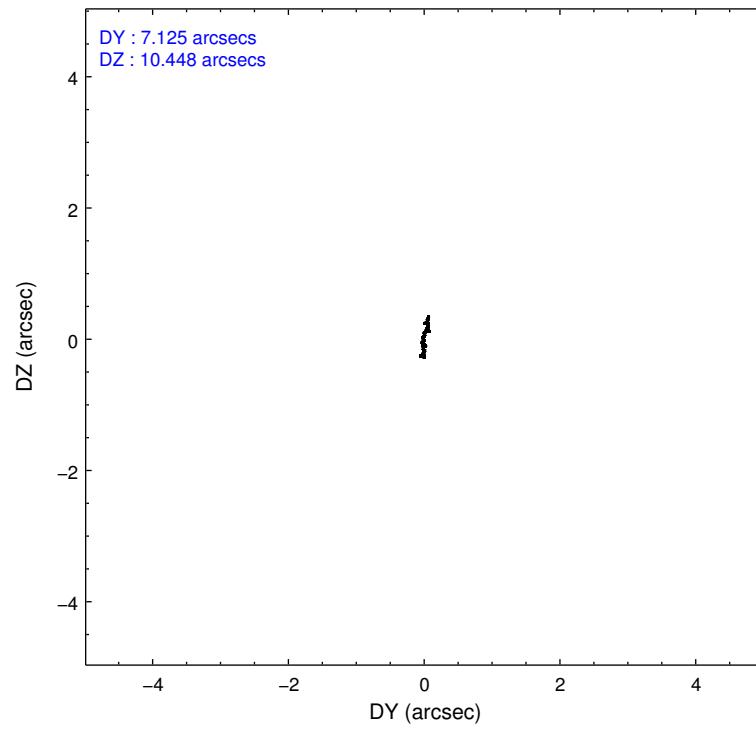
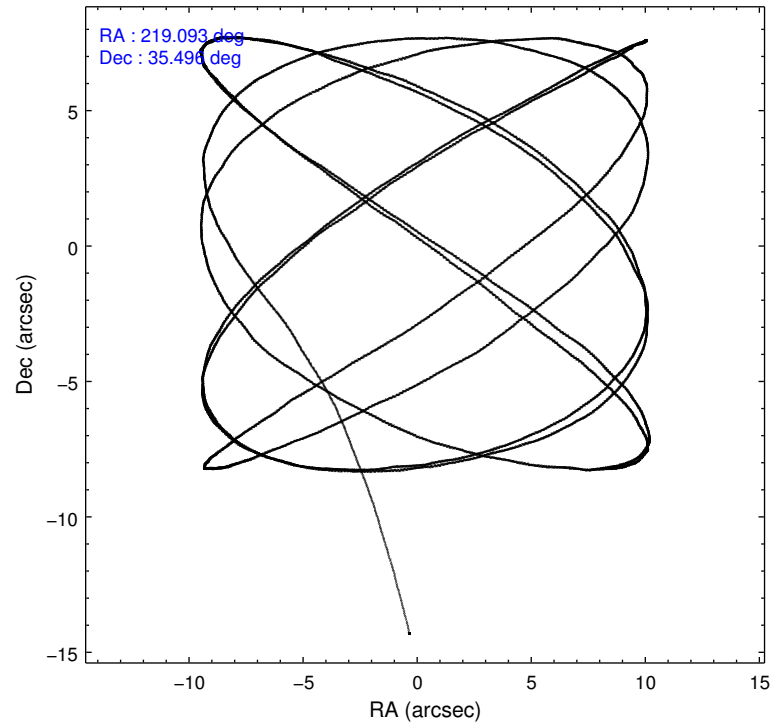
	ccd 0	ccd 1	ccd 2	ccd 3	ccd 6
level 1 events	35566	34797	39440	36655	36519
rejected events	32252	31270	36198	33376	33181
rejected %	90%	89%	91%	91%	90%

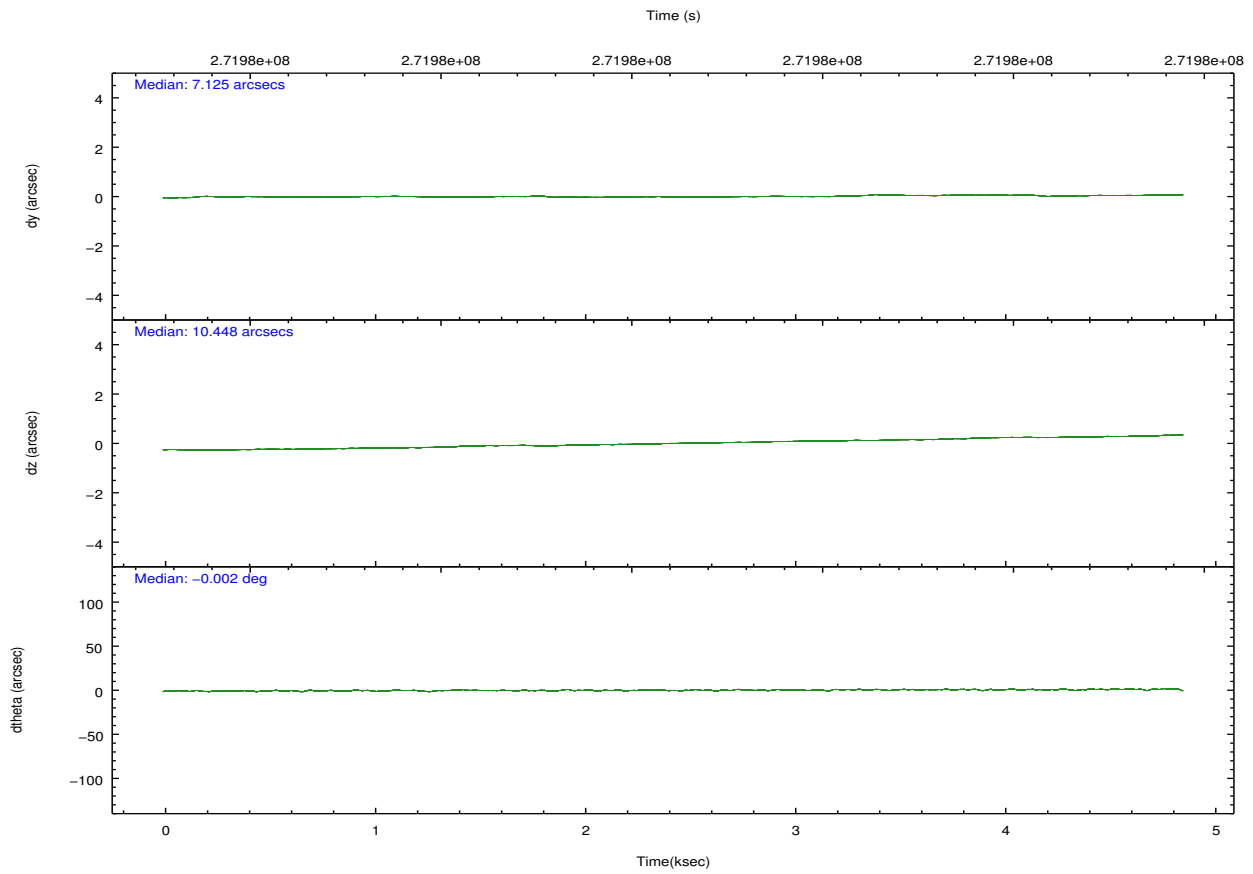
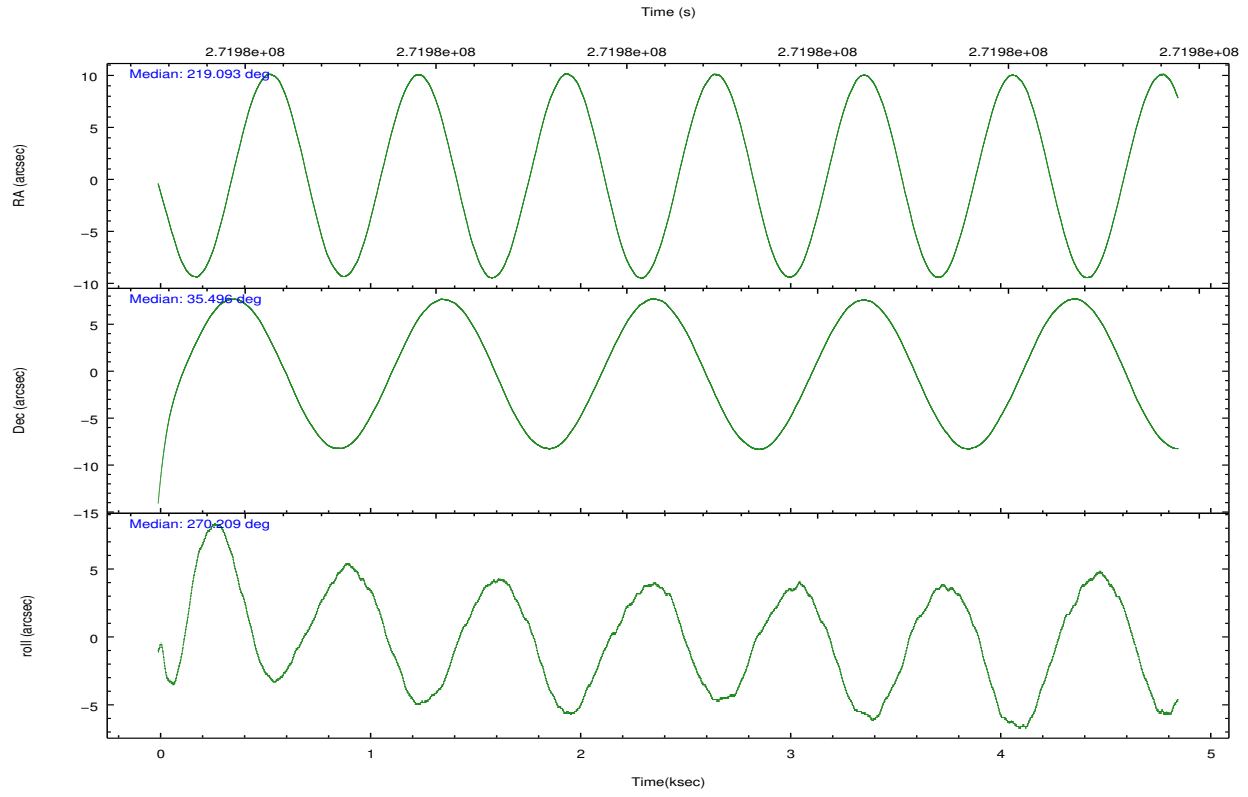
	ccd 0	ccd 1	ccd 2	ccd 3	ccd 6
grade 0 events	1297	1257	1343	1332	1301
	3%	3%	3%	3%	3%
grade 1 events	17	16	16	13	24
	0%	0%	0%	0%	0%
grade 2 events	810	802	765	750	739
	2%	2%	1%	2%	2%
grade 3 events	384	474	394	364	405
	1%	1%	0%	0%	1%
grade 4 events	372	436	388	414	394
	1%	1%	0%	1%	1%
grade 5 events	1078	1185	1037	1242	1217
	3%	3%	2%	3%	3%
grade 6 events	698	794	597	672	764
	1%	2%	1%	1%	2%
grade 7 events	30910	29833	34900	31868	31675
	86%	85%	88%	86%	86%

2.2 Compared Parameters

Parameter	Planned	Actual	Parameter	Planned	Actual
Instrument	ACIS	ACIS	Obspar format version number	7	7
Detector	ACIS-01236	ACIS-01236	Obspar file type	PREDICTED	ACTUAL
Grating	NONE	NONE	Obspar update status	NONE	UPDATED
Data mode	VFAINT	VFAINT	Number of optional ACIS chips dropped	0	0
Observation mode	POINTING	POINTING	On-chip summing requested	N	N
[deg] Pointing RA	219.075650	219.0926808273884	Subarray requested	NONE	NONE
[deg] Pointing Dec	35.519630	35.49604937924649	Alternating exposures requested	N	N
[deg] Pointing Roll	270.011177	270.2099944307315	[s] Primary exposure time	0.000000	3.1
[mm] SIM focus pos	-0.782348	-0.7809083437167272			
[mm] SIM defocus	0	0.001439871863259334			
[mm] SIM translation stage pos	-233.592463	-233.5874344608287			
[mm] SIM translation stage offset	0	-0.005018542100998502			
[s] Observation start time (MET)	271976943.184000	271975780.25074			
Observation start date	2006-08-14T21:07:58	2006-08-14T20:49:40			
[s] Observation end time (MET)	271981643.184000	271981777.52602			
Observation end date	2006-08-14T22:26:18	2006-08-14T22:29:37			
Read mode	TIMED	TIMED			

2.3 Aspect



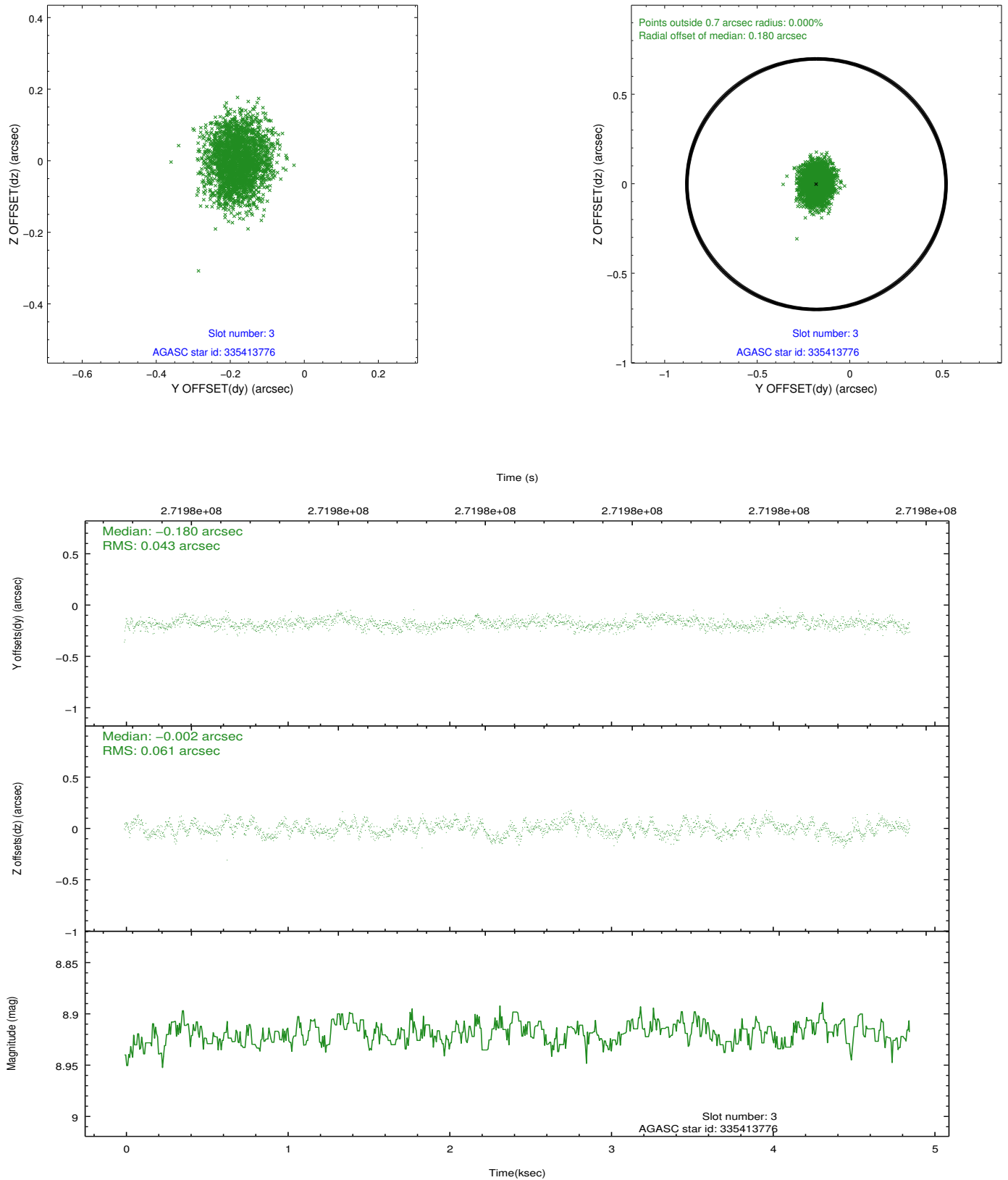


Slot Statistics

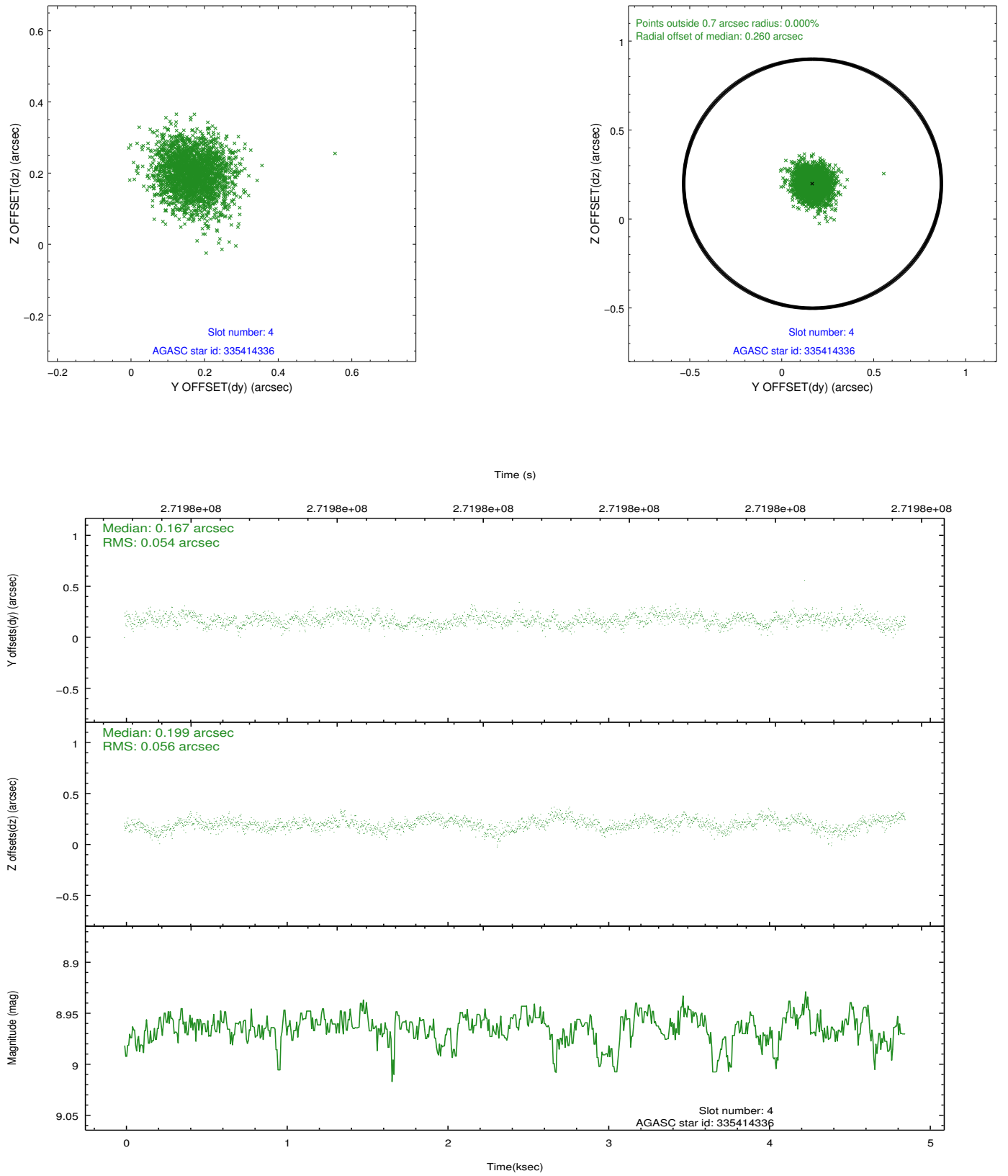
slot	status	id	mag	n_pts	med_dy	med_dz	dr1	dr2	ra	dec	mean_y	mean_z
0	FID	ACIS-I-1	7.25	1185	0.031	-0.037	0.012	0.020	0.000000	0.000000	932.57	-833.97
1	FID	ACIS-I-5	7.24	1185	-0.168	0.040	0.007	0.012	0.000000	0.000000	-1815.03	1062.97
2	FID	ACIS-I-6	7.25	1185	0.046	0.067	0.008	0.014	0.000000	0.000000	396.77	1708.92
3	GUIDE	335413776	8.92	2368	-0.180	-0.002	0.080	0.127	218.421411	36.051962	-1922.94	-1904.04
4	GUIDE	335414336	8.96	2368	0.167	0.199	0.081	0.133	218.979022	35.090910	1543.01	-285.32
5	GUIDE	335549864	7.53	2370	-0.104	-0.130	0.083	0.125	219.286726	35.929745	-1475.98	615.51
6	GUIDE	335152968	9.76	2368	0.108	0.276	0.183	0.287	219.446087	34.867883	2344.65	1094.66
7	GUIDE	335153056	10.13	2363	0.024	-0.332	0.220	0.362	219.264627	34.869152	2342.73	558.15

2.4 Star Slots

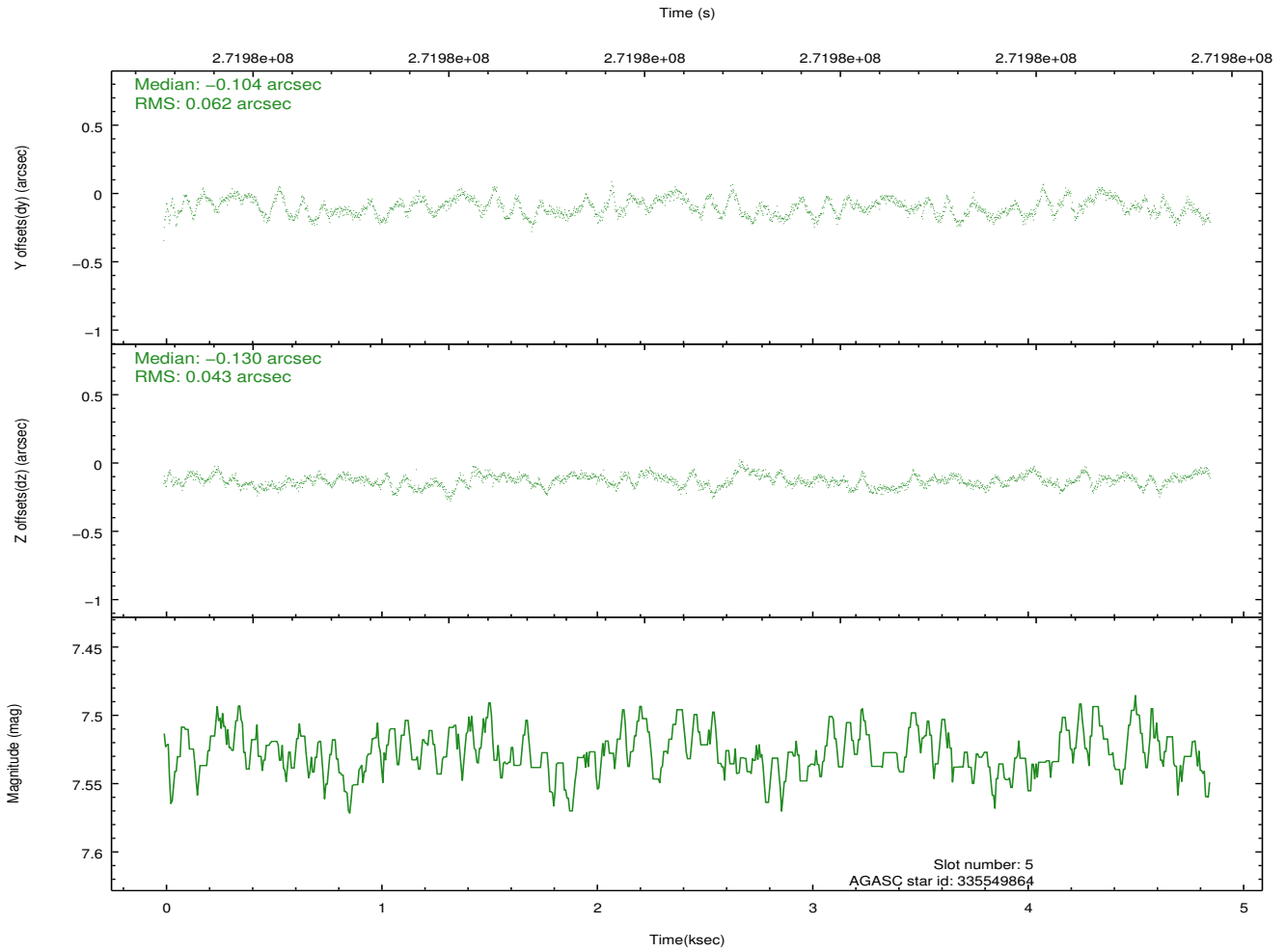
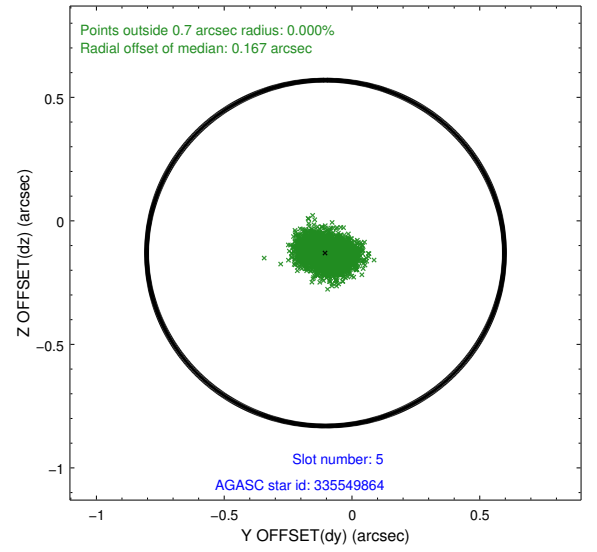
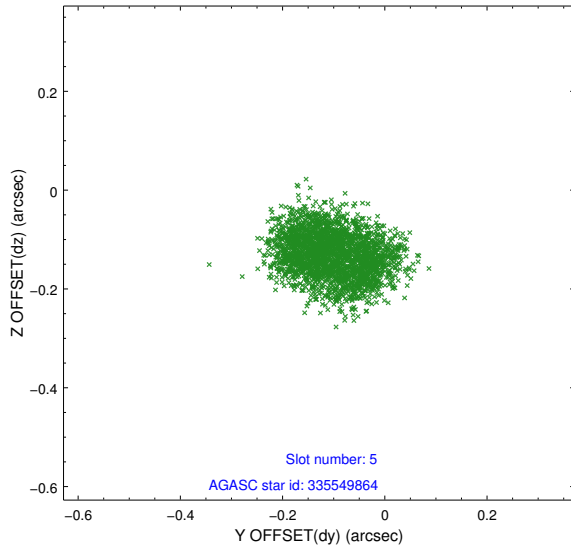
2.4.1 Slot 3



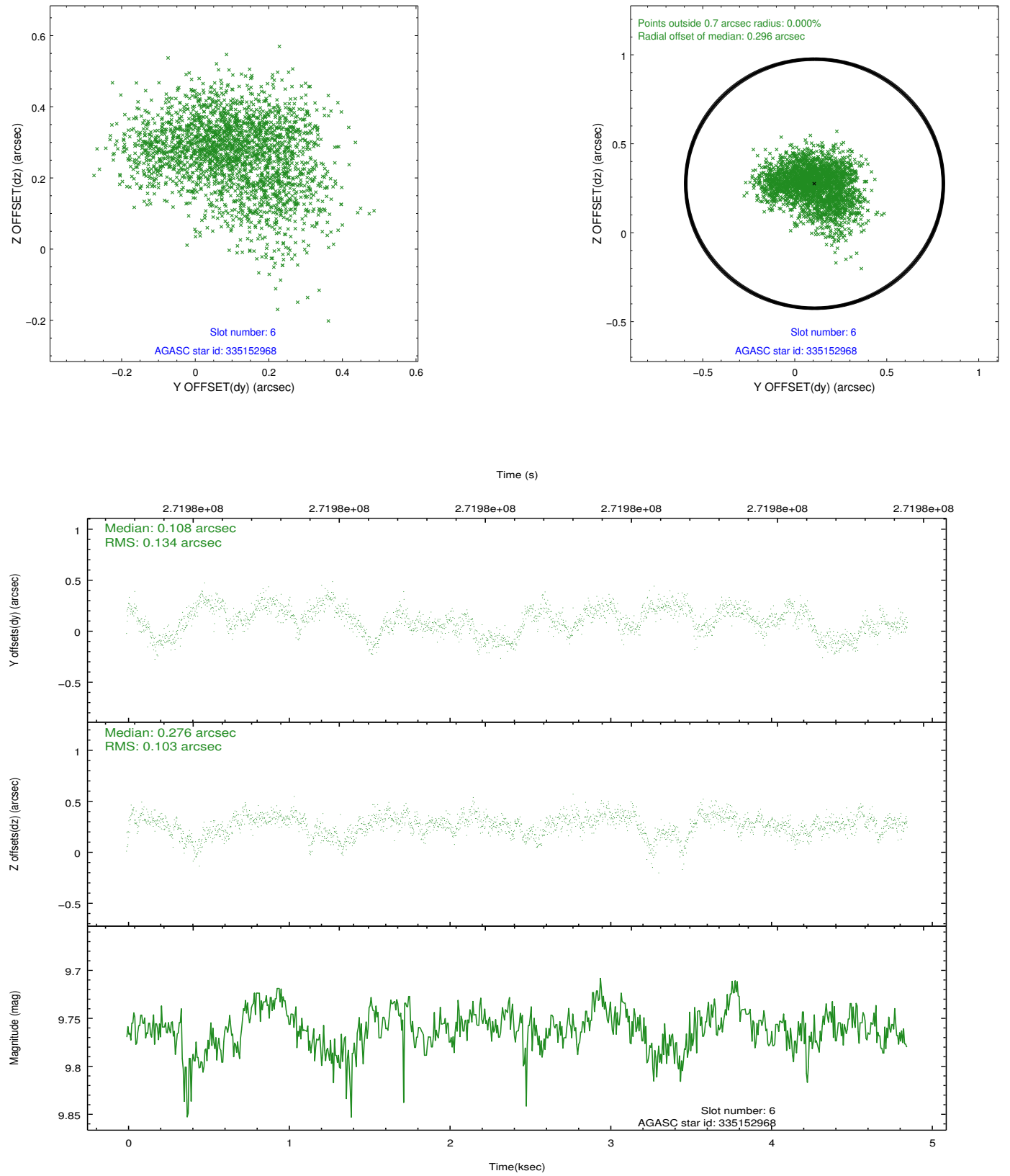
2.4.2 Slot 4



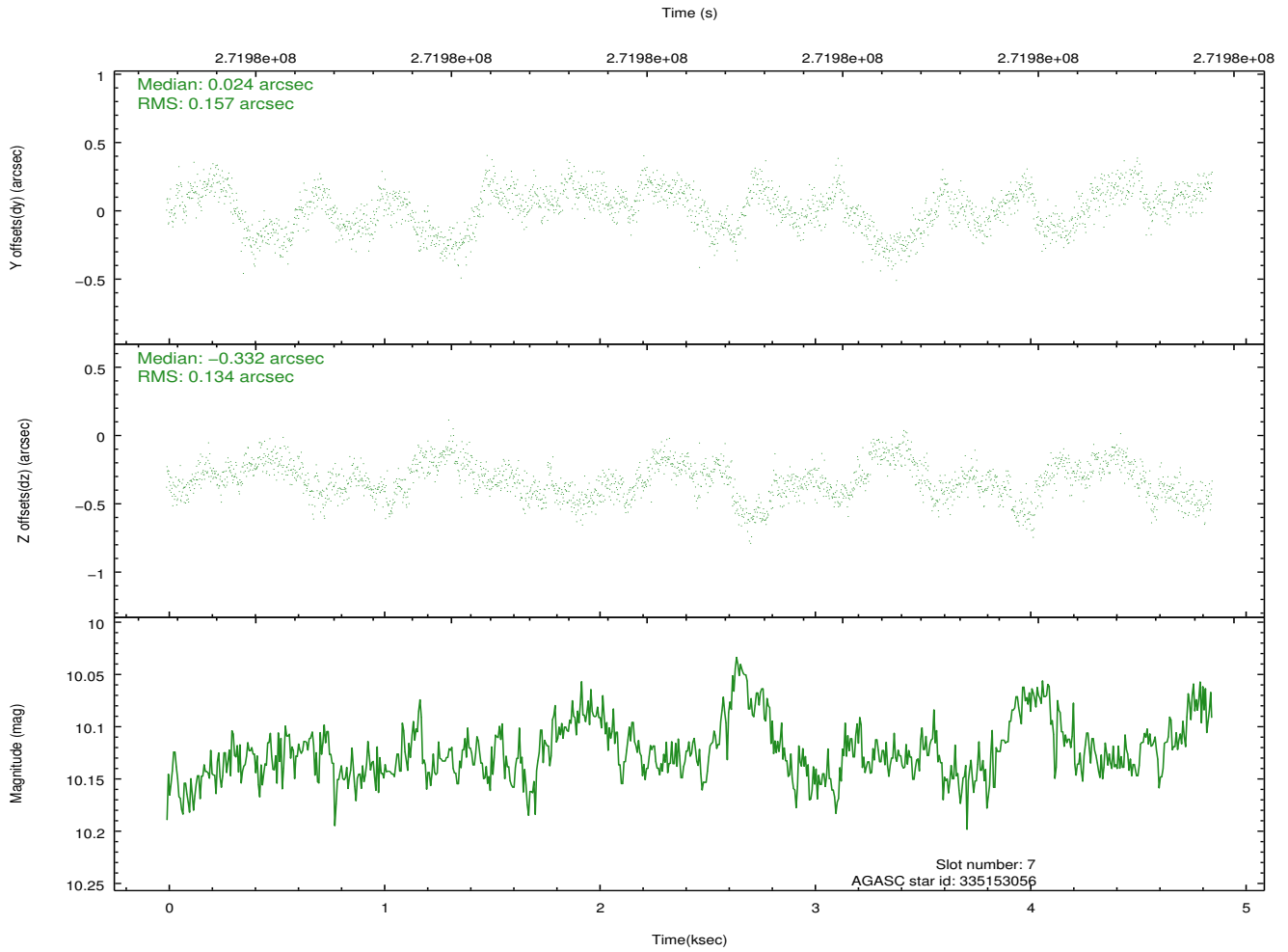
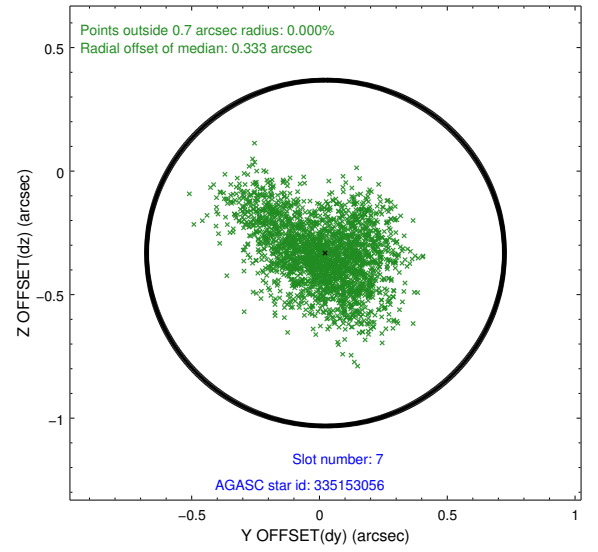
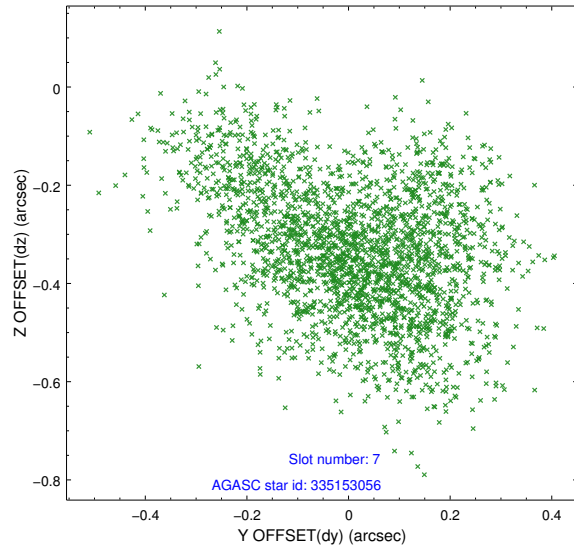
2.4.3 Slot 5



2.4.4 Slot 6

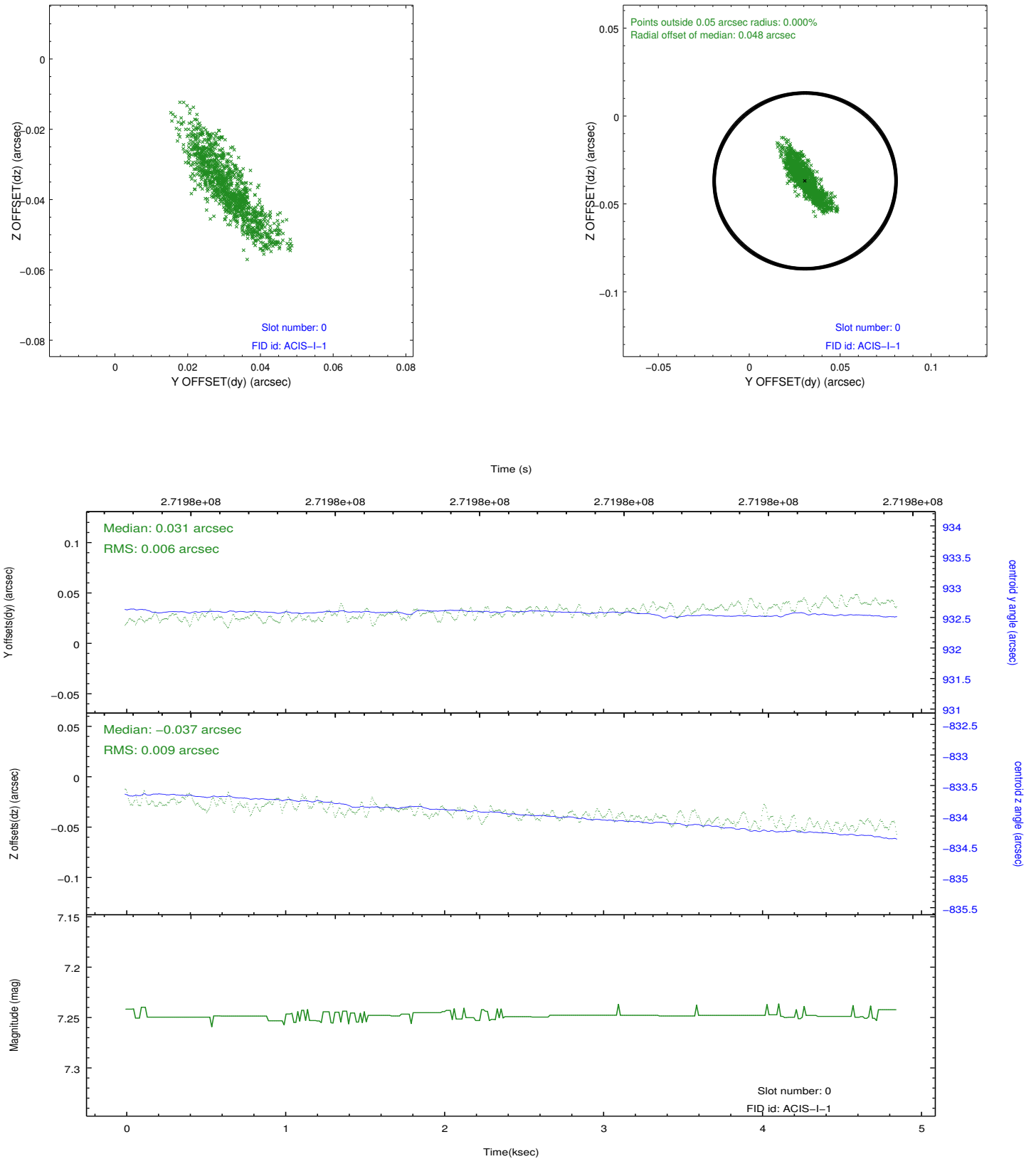


2.4.5 Slot 7

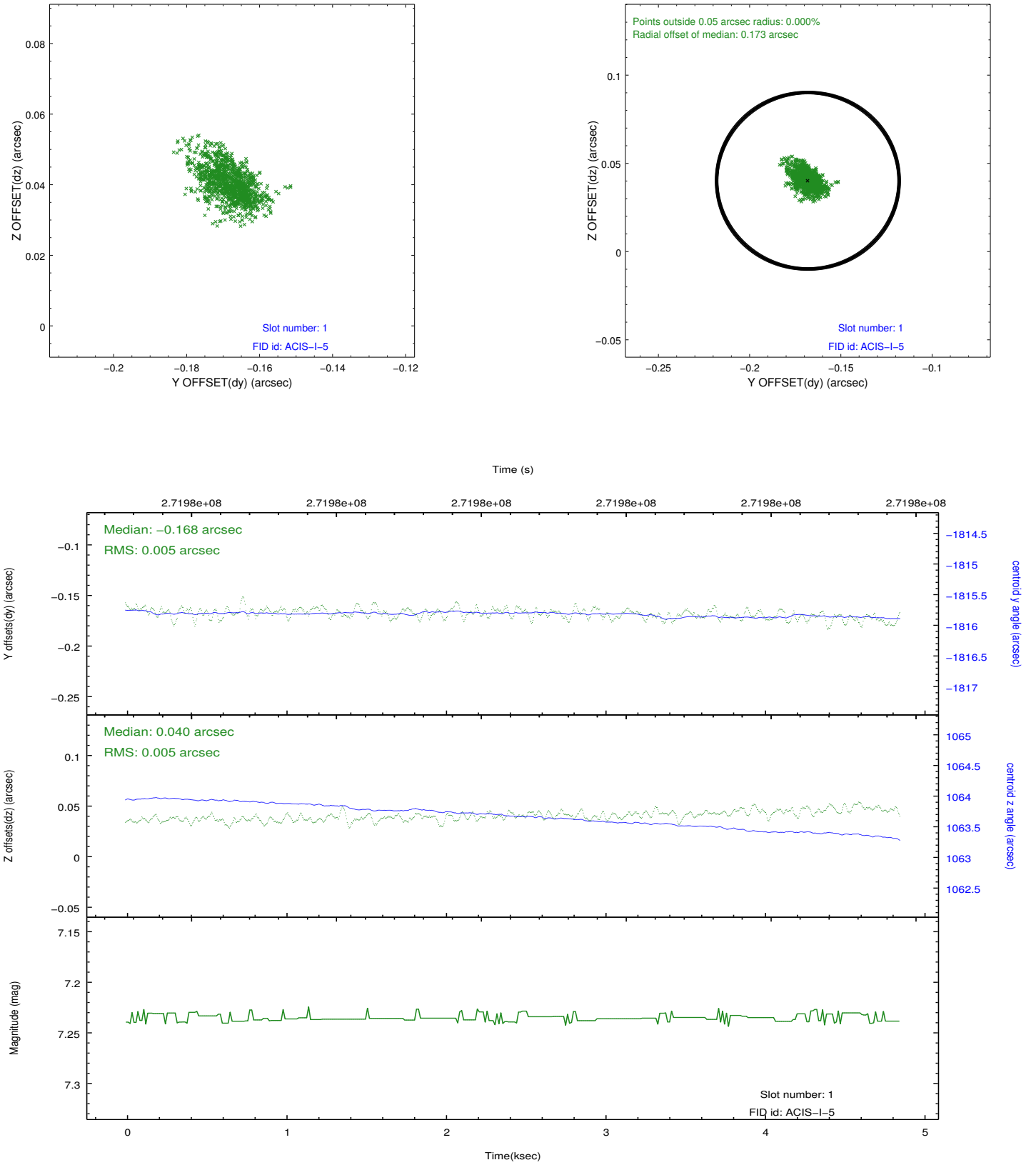


2.5 FID Slots

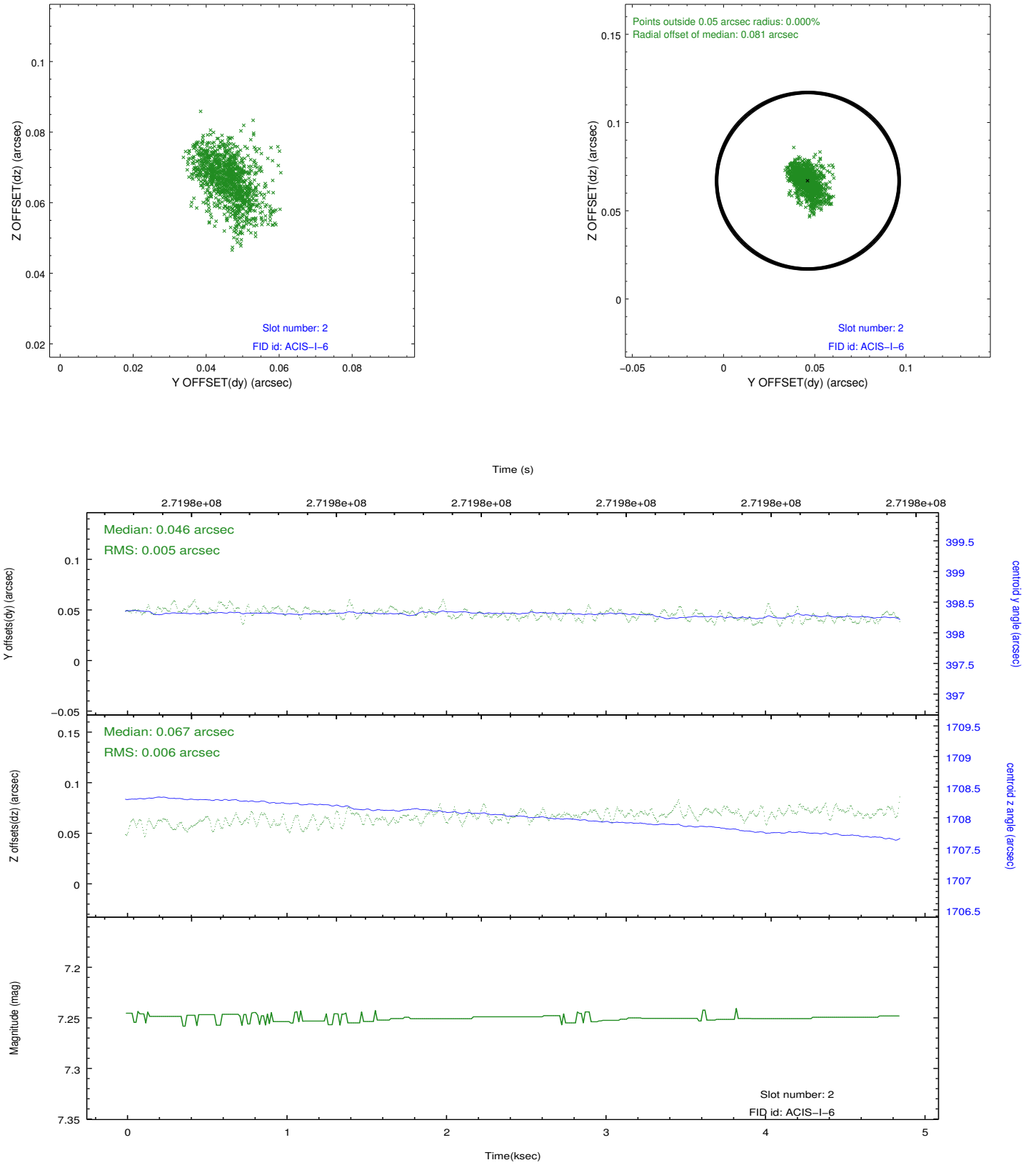
2.5.1 Slot 0



2.5.2 Slot 1



2.5.3 Slot 2



A Summary

A.1 Status

V&V Scientist	Jen Lauer
V&V Date (YYYY-MM-DD)	2012.04.08
V&V Edition	1
V&V Disposition and Status	OK
V&V Charge Time	4.84525904

A.2 Comments