

# V&V Reference Report

## L2 ASCDS Version : 8.4.3

Observation 6600 - L2 Version 4  
Chandra X-Ray Center

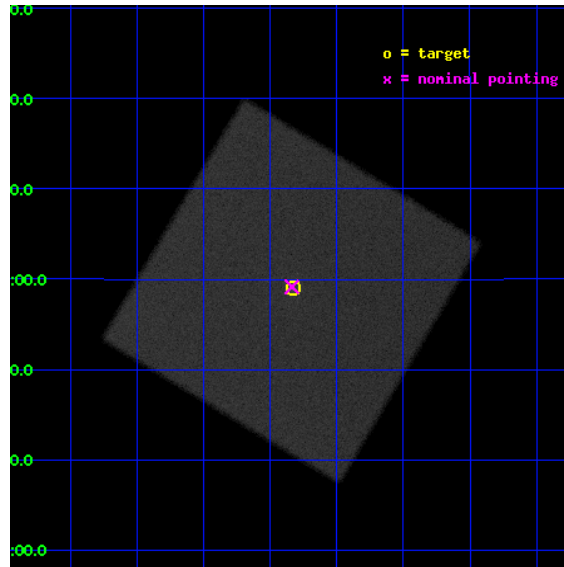
L2 Processing Date : Aug 11 2012

## Contents

<b>1</b>	<b>Front</b>	<b>2</b>
<b>2</b>	<b>OBI</b>	<b>3</b>
2.1	OBI . . . . .	3
2.1.1	Images . . . . .	3
2.1.2	Parameters . . . . .	4
2.1.3	Events . . . . .	4
2.2	Compared Parameters . . . . .	5
2.3	Aspect . . . . .	6
2.4	Star Slots . . . . .	9
2.4.1	Slot 3 . . . . .	9
2.4.2	Slot 4 . . . . .	10
2.4.3	Slot 5 . . . . .	11
2.4.4	Slot 6 . . . . .	12
2.4.5	Slot 7 . . . . .	13
2.5	FID Slots . . . . .	14
2.5.1	Slot 0 . . . . .	14
2.5.2	Slot 1 . . . . .	15
2.5.3	Slot 2 . . . . .	16
<b>A</b>	<b>Summary</b>	<b>17</b>
A.1	Status . . . . .	17
A.2	Comments . . . . .	17

# 1 Front

seq_num	400505	Sequence number
obs_id	6600	Observation id
title	Rapid variability of the arcsec scale X-ray jets of SS 433	Proposa
observer	Dr Simone Migliari	Principal investigator
object	SS 433	Source name
ra_targ	287.956667	Observer's specified target RA [deg]
dec_targ	4.982667	Observer's specified target Dec [deg]
ra_nom	287.95918823989	Nominal RA [deg]
dec_nom	4.9860317294463	Nominal Dec [deg]
roll_nom	75.900731376694	Nominal Roll [deg]
revision	4	Processing version of data
ontime	15121.569453001	[s]
livetime	14996.486632951	Ontime multiplied by DTCOR
l2events	690841	Number of level 2 events

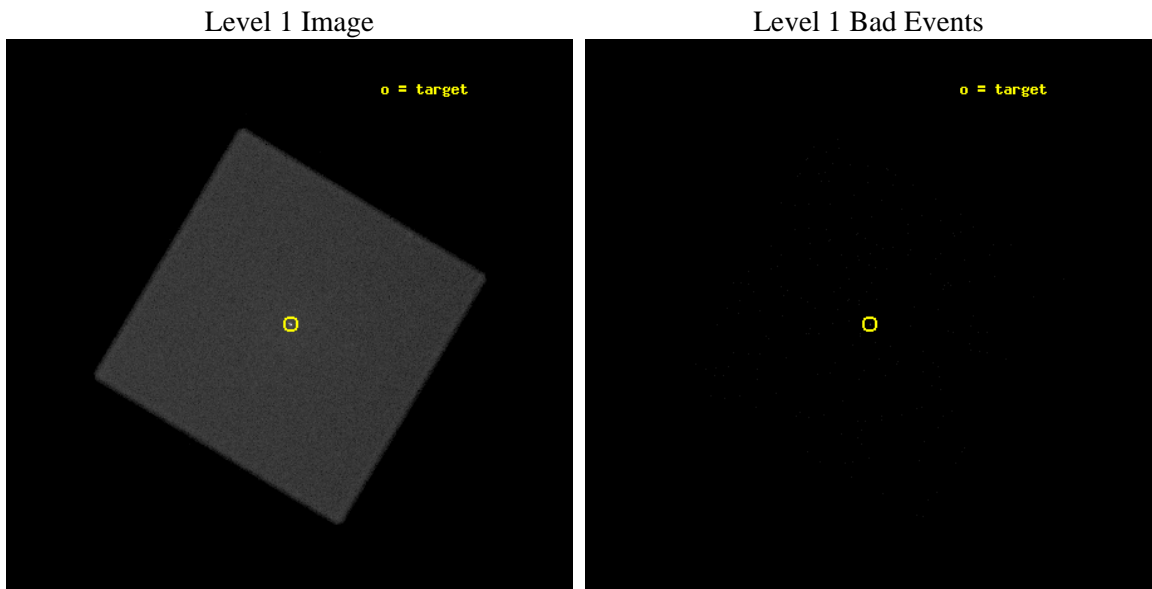




## 2 OBI

### 2.1 OBI

#### 2.1.1 Images



### 2.1.2 Parameters

obi_num	0	Obi number	sched_exp_time	15000.000000	[s] Scheduled observation exposure time
ascdsver	8.4.5	Processing system revision	ontime	15121.569453001	[s]
caldbver	4.5.1.1	&#160	l1events	1108815	Number of level 1 events
date	2012-08-11T02:03:09	Date and time of file creation			
revision	4	Processing version of data			

### 2.1.3 Events

#### Level 1 Events

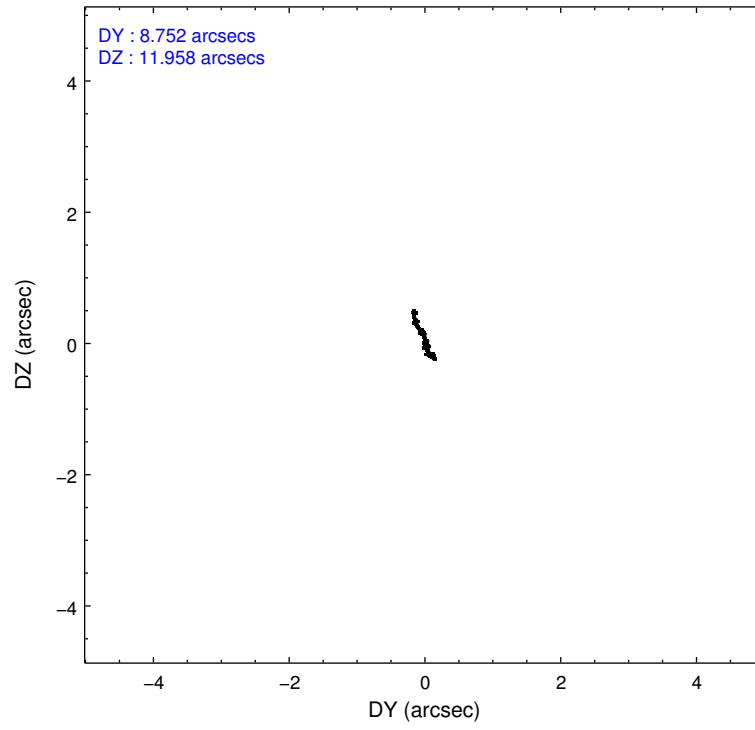
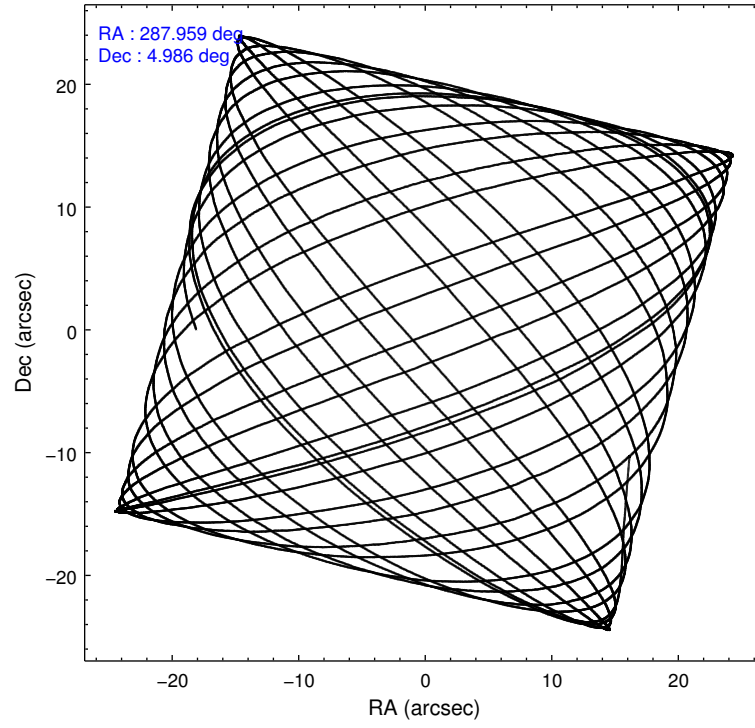
	<b>segment 0</b>
level 1 events	1108815
rejected events	85890
rejected %	7%

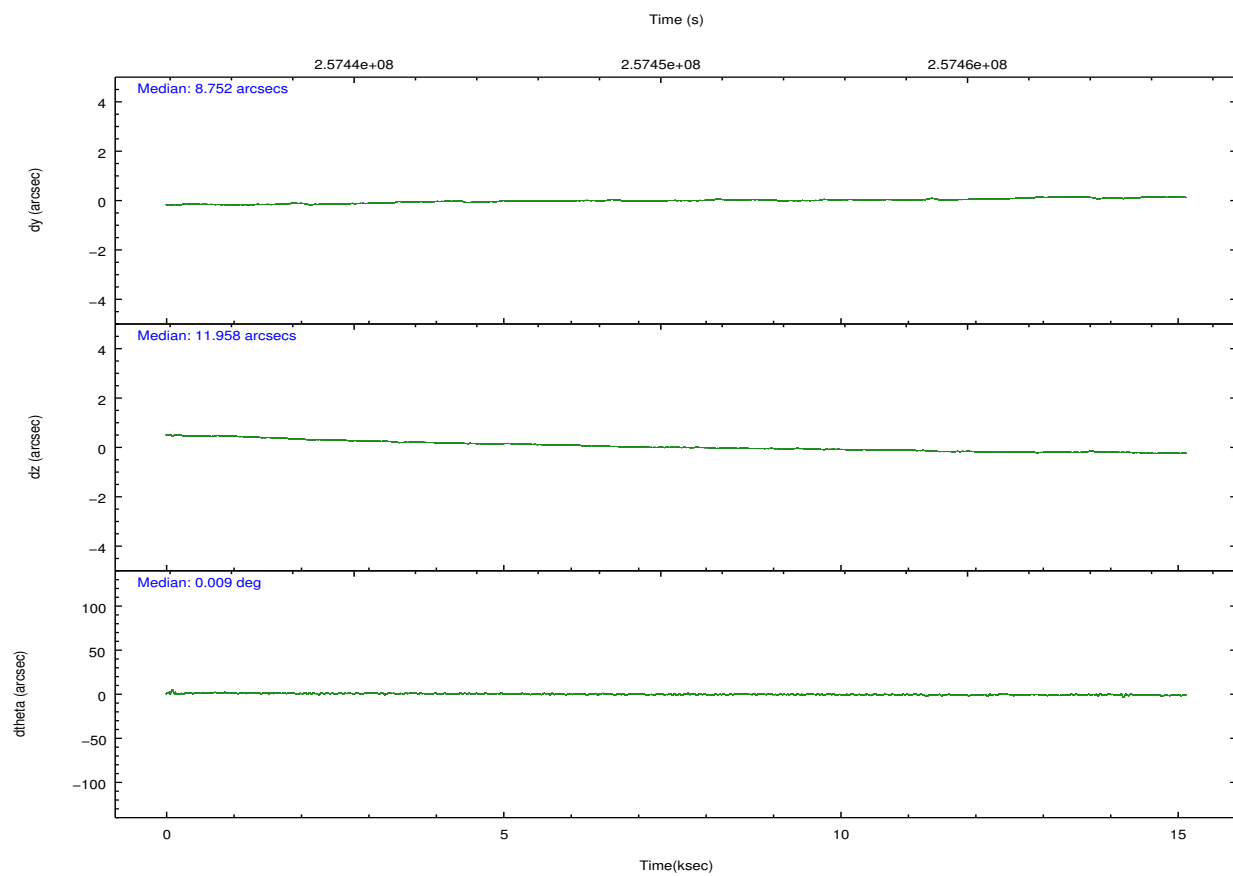
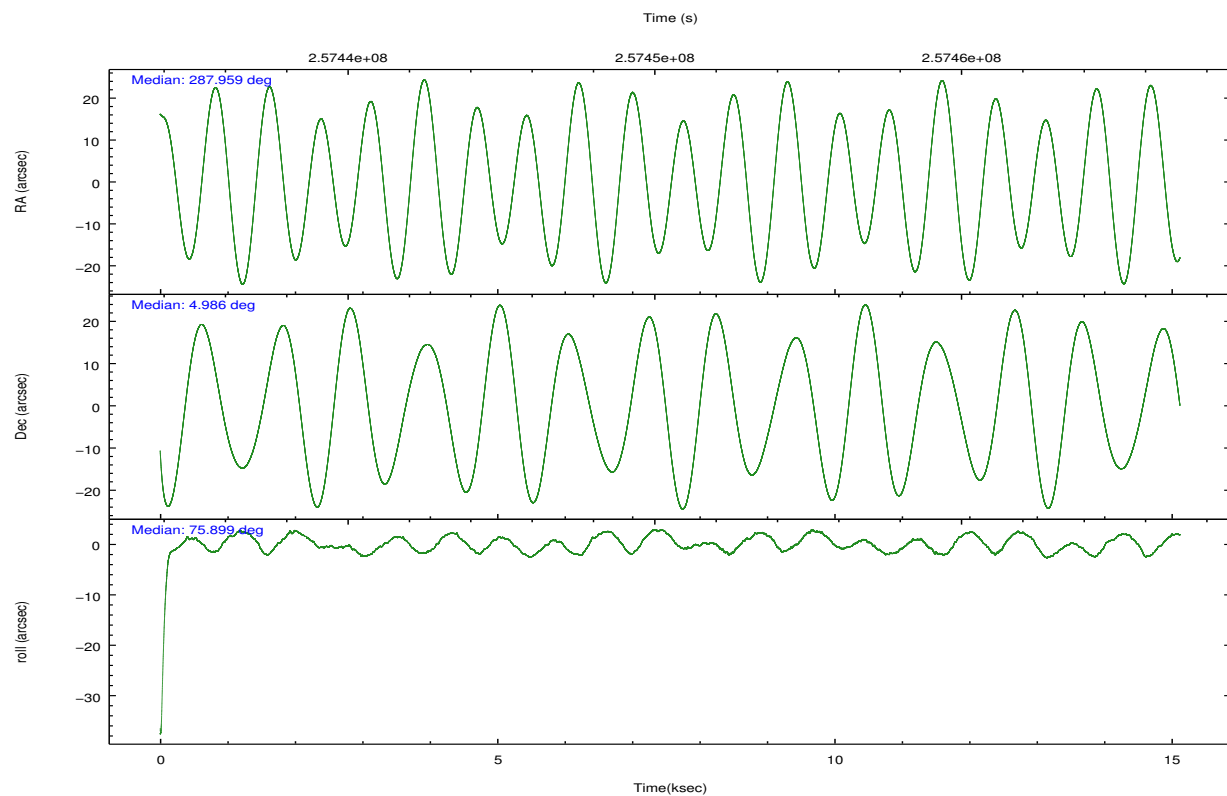
## 2.2 Compared Parameters

Parameter	Planned	Actual
Instrument	HRC	HRC
Detector	HRC-I	HRC-I
Grating	NONE	NONE
Data mode	OBSERVING	OBSERVING
Observation mode	POINTING	POINTING
[deg] Pointing RA	287.967232	287.9591882398906
[deg] Pointing Dec	4.960112	4.986031729446321
[deg] Pointing Roll	75.995557	75.90073137669381
[mm] SIM focus pos	-1.040293	-1.038866356238299
[mm] SIM defocus	0	0.001426264420575141
[mm] SIM translation stage pos	126.985494	126.9829799899862
[mm] SIM translation stage offset	0	0.002508901615314585
[s] Observation start time (MET)	257442803.184000	257441456.38452
Observation start date	2006-02-27T15:52:18	2006-02-27T15:30:56
[s] Observation end time (MET)	257457803.184000	257458909.06034
Observation end date	2006-02-27T20:02:18	2006-02-27T20:21:49

Parameter	Planned	Actual
Obspar format version number	7	7
Obspar file type	PREDICTED	ACTUAL
Obspar update status	NONE	UPDATED

## 2.3 Aspect



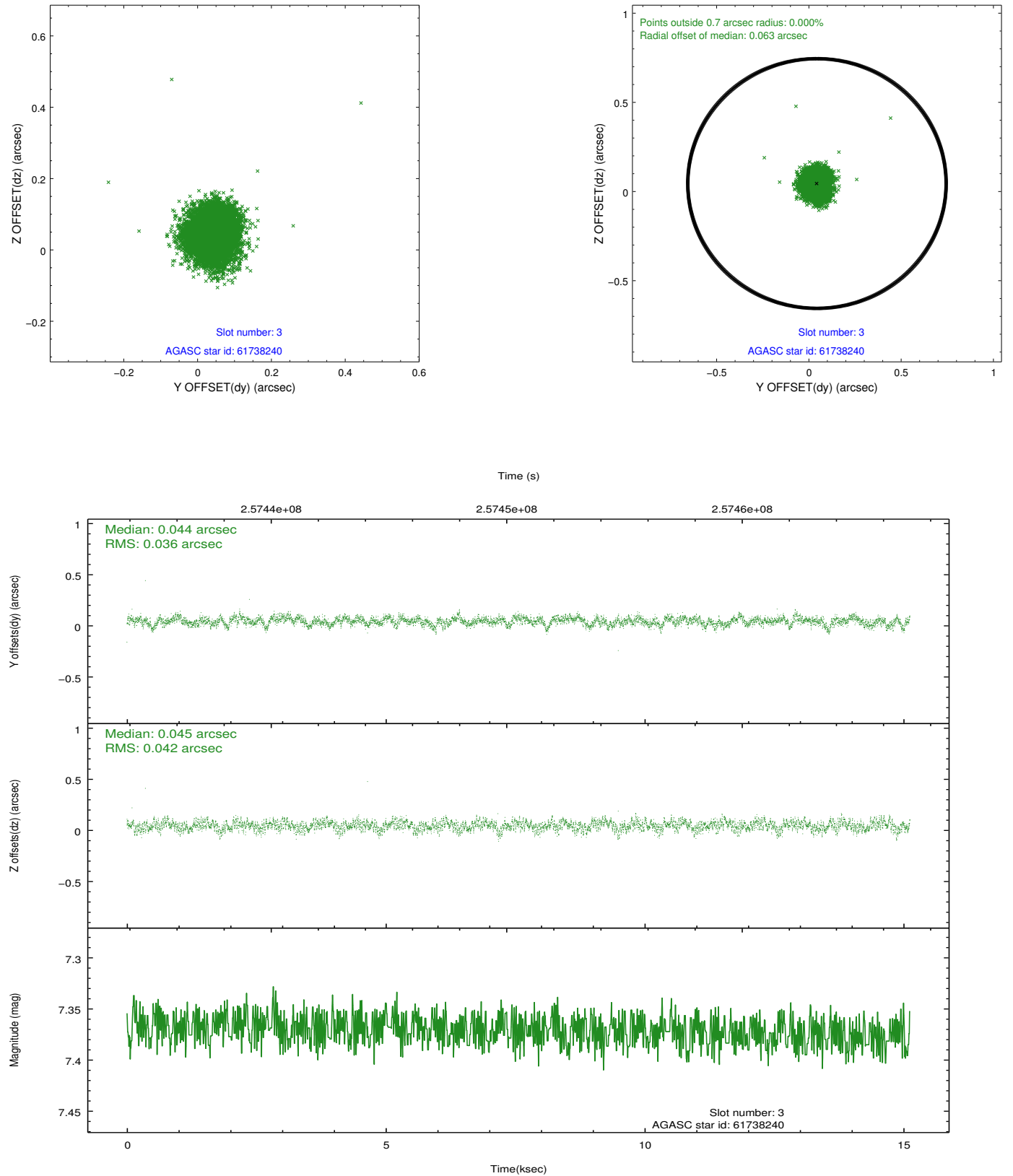


### Slot Statistics

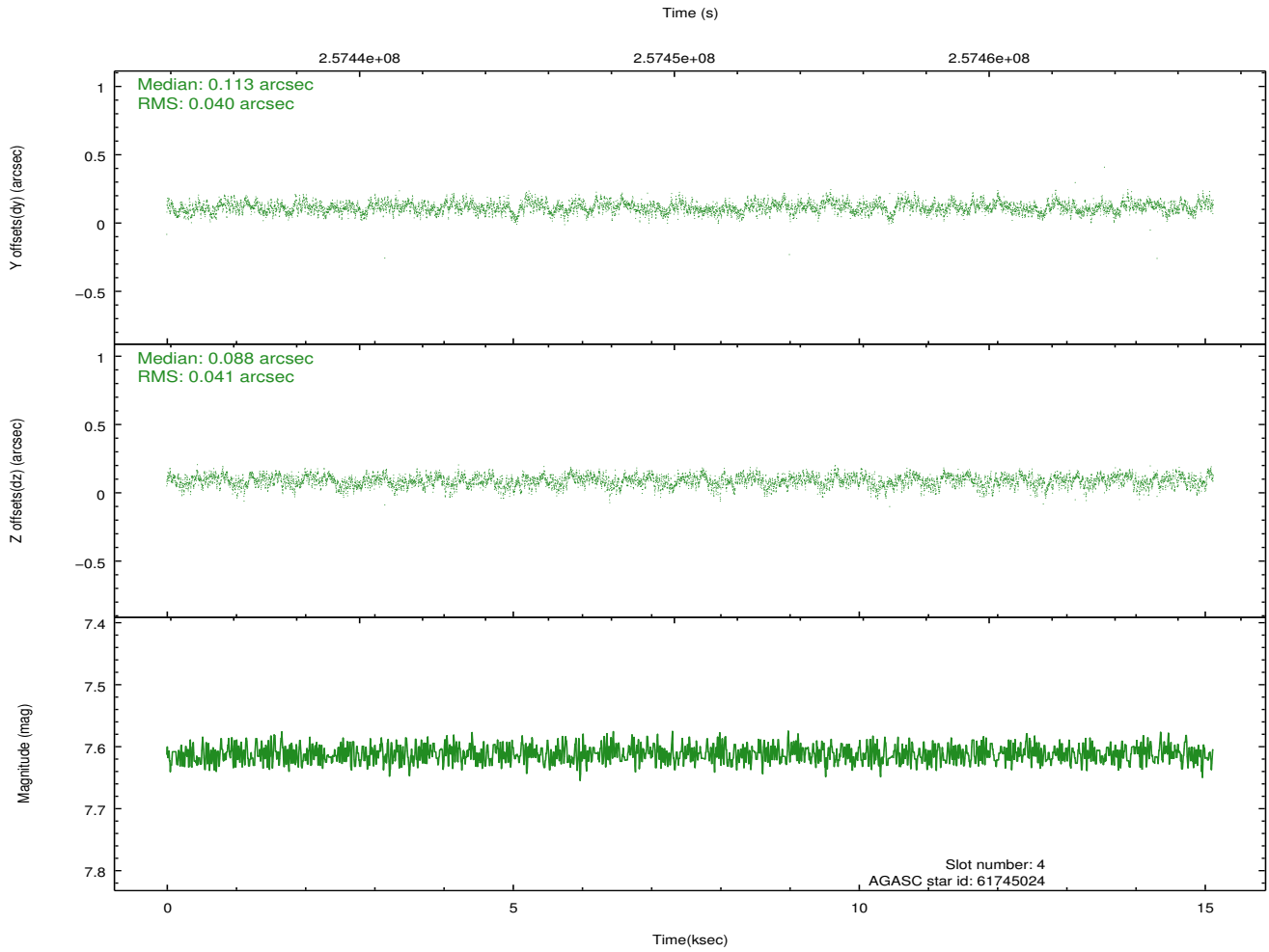
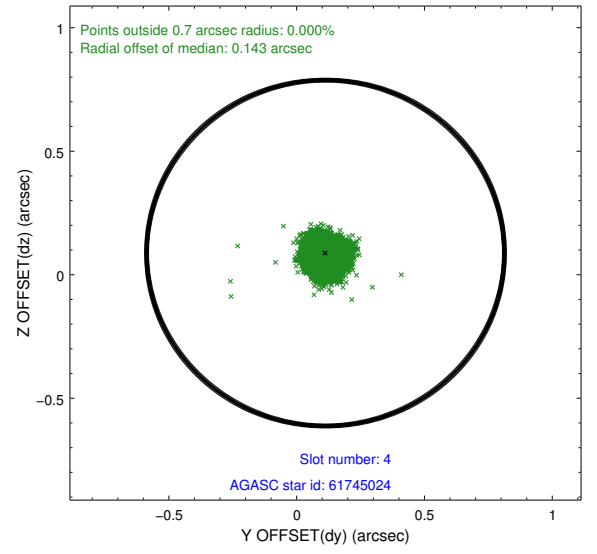
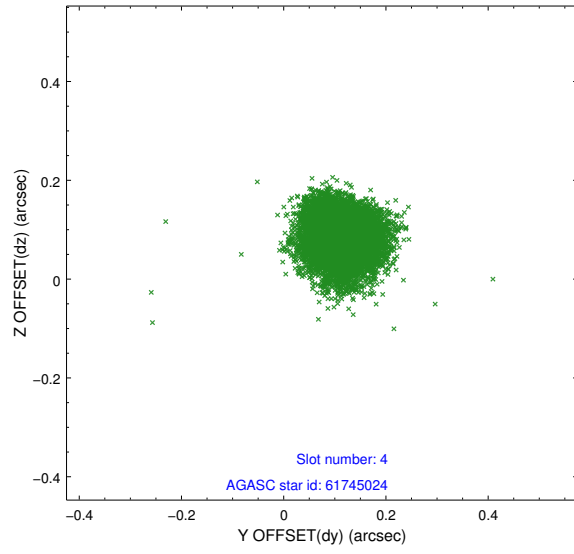
slot	status	id	mag	n_pts	med_dy	med_dz	dr1	dr2	ra	dec	mean_y	mean_z
0	FID	HRC-I-2	7.07	3687	0.120	-0.118	0.010	0.015	0.000000	0.000000	848.38	-1301.68
1	FID	HRC-I-3	7.13	3689	-0.117	0.061	0.009	0.015	0.000000	0.000000	-1192.75	1004.28
2	FID	HRC-I-4	7.07	3689	0.115	-0.031	0.007	0.012	0.000000	0.000000	1278.21	1002.41
3	GUIDE	61738240	7.37	7376	0.044	0.045	0.058	0.093	287.996556	4.354861	-2088.38	-629.33
4	GUIDE	61745024	7.61	7377	0.113	0.088	0.061	0.097	288.156168	5.297362	1342.08	-363.14
5	GUIDE	61743800	7.47	7376	-0.037	-0.216	0.072	0.113	287.776811	5.274666	933.99	936.29
6	GUIDE	61737344	7.92	7377	0.040	0.001	0.079	0.125	288.389606	4.264010	-2063.77	-2077.44
7	GUIDE	61742888	6.92	7376	-0.163	0.082	0.073	0.121	288.433450	5.515613	2345.04	-1137.00

## 2.4 Star Slots

### 2.4.1 Slot 3

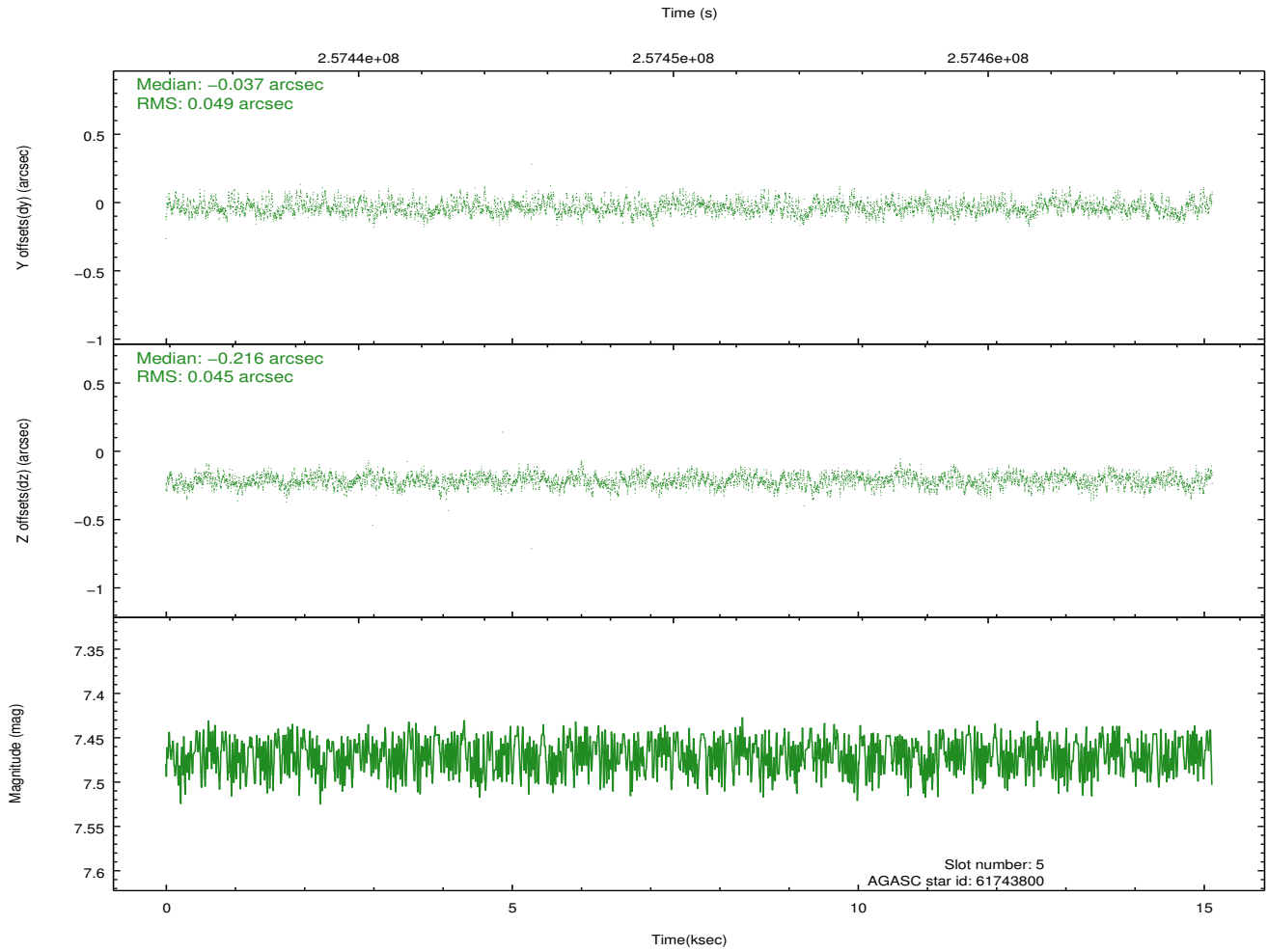
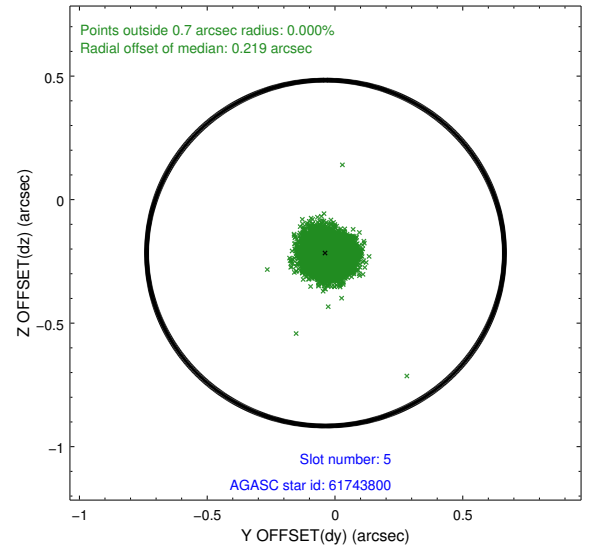
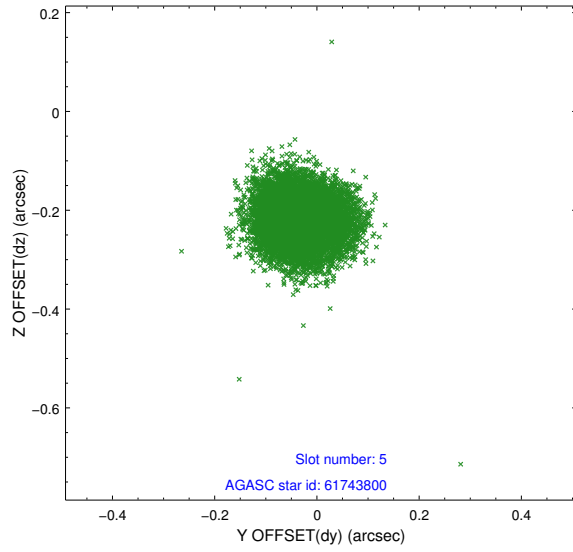


## 2.4.2 Slot 4

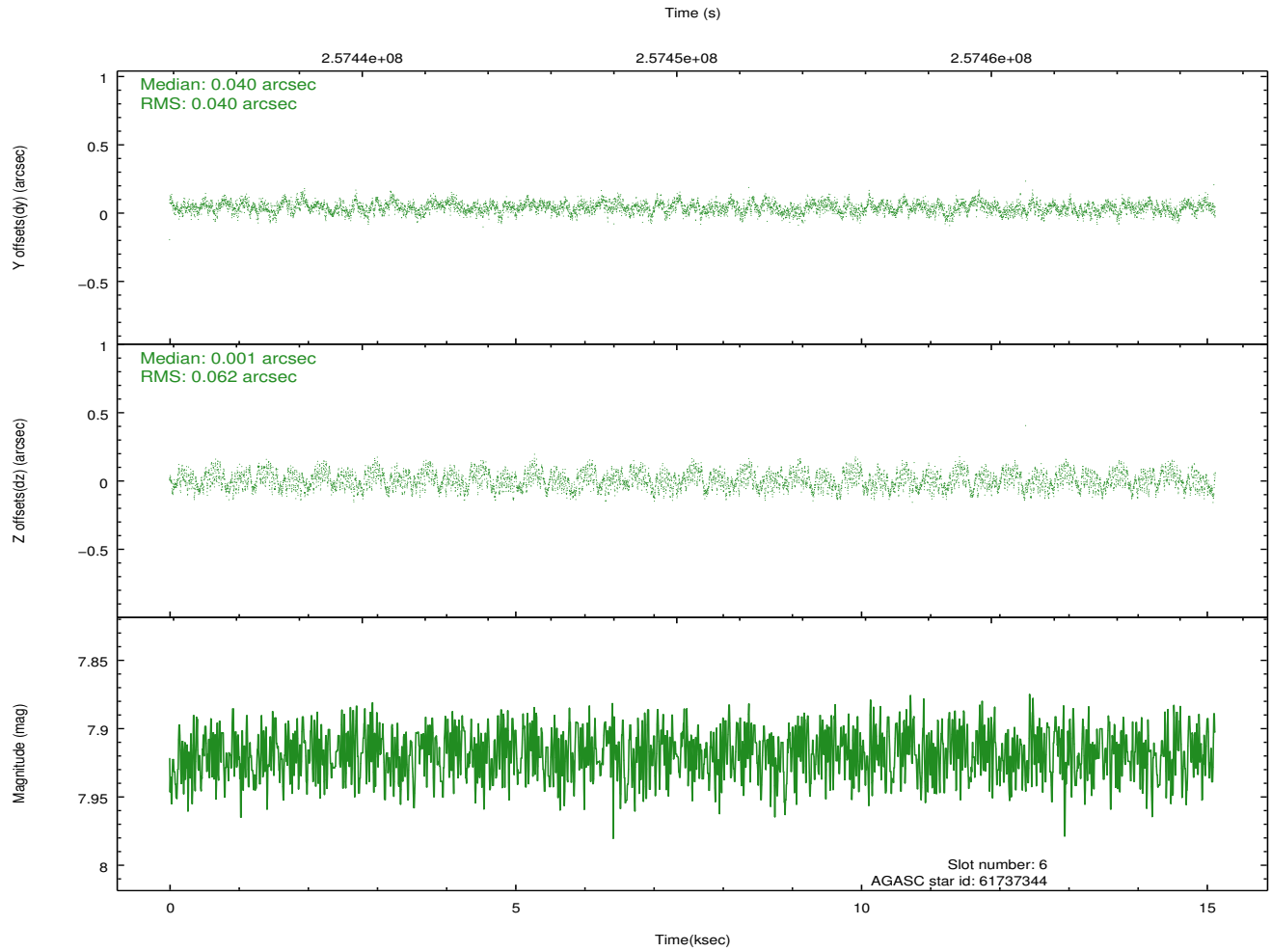
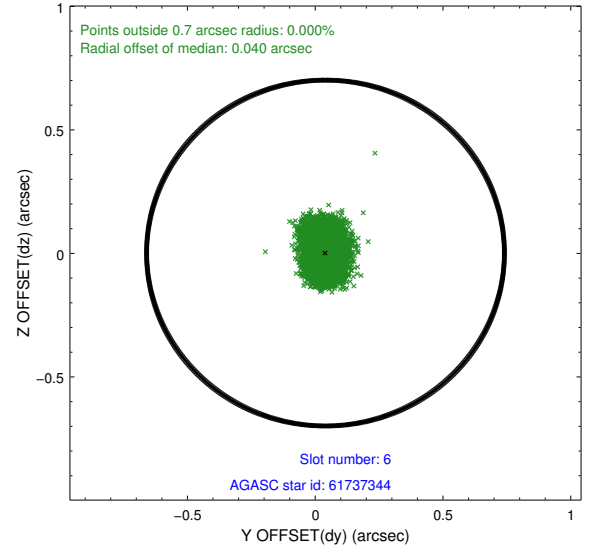
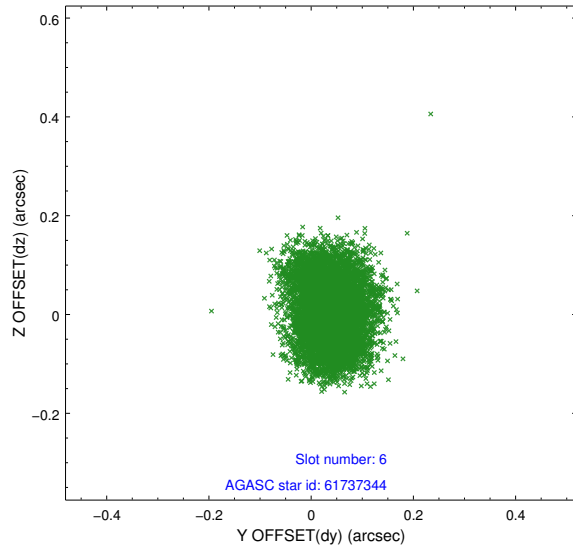




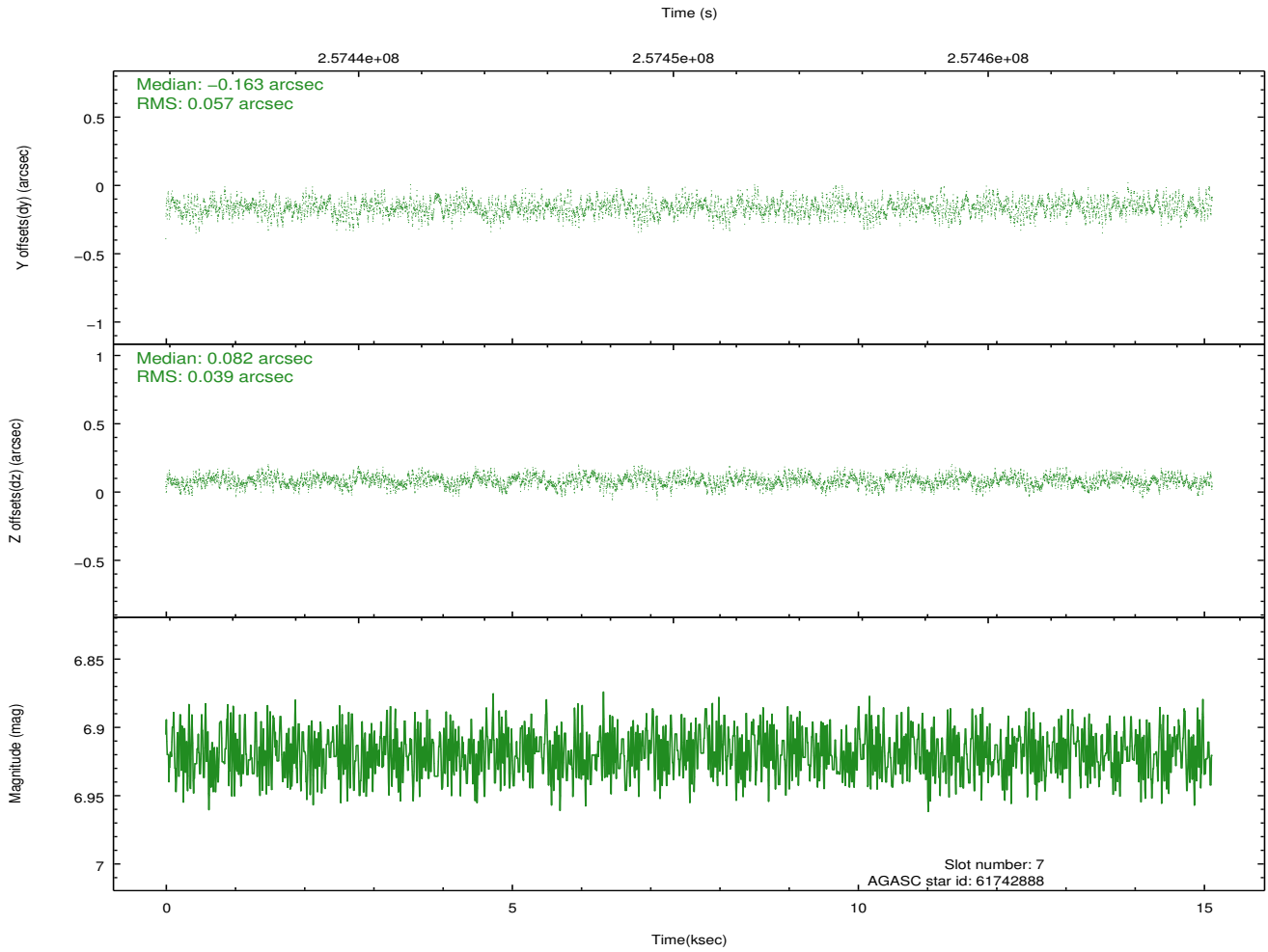
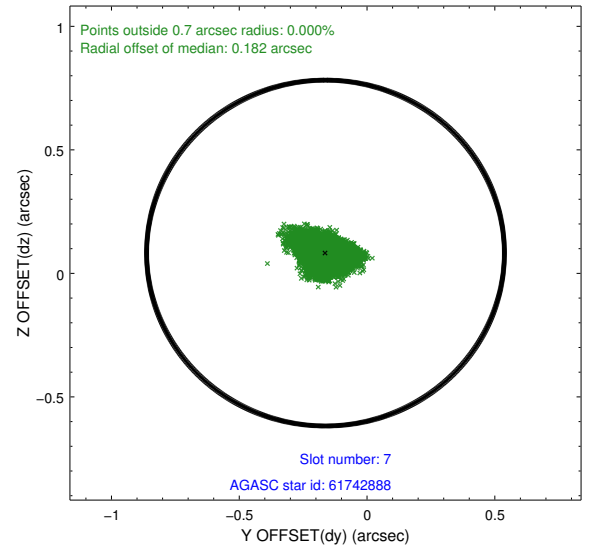
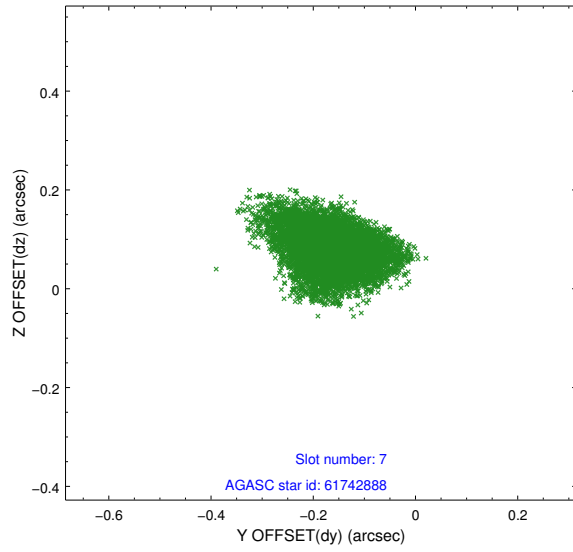
### 2.4.3 Slot 5



## 2.4.4 Slot 6

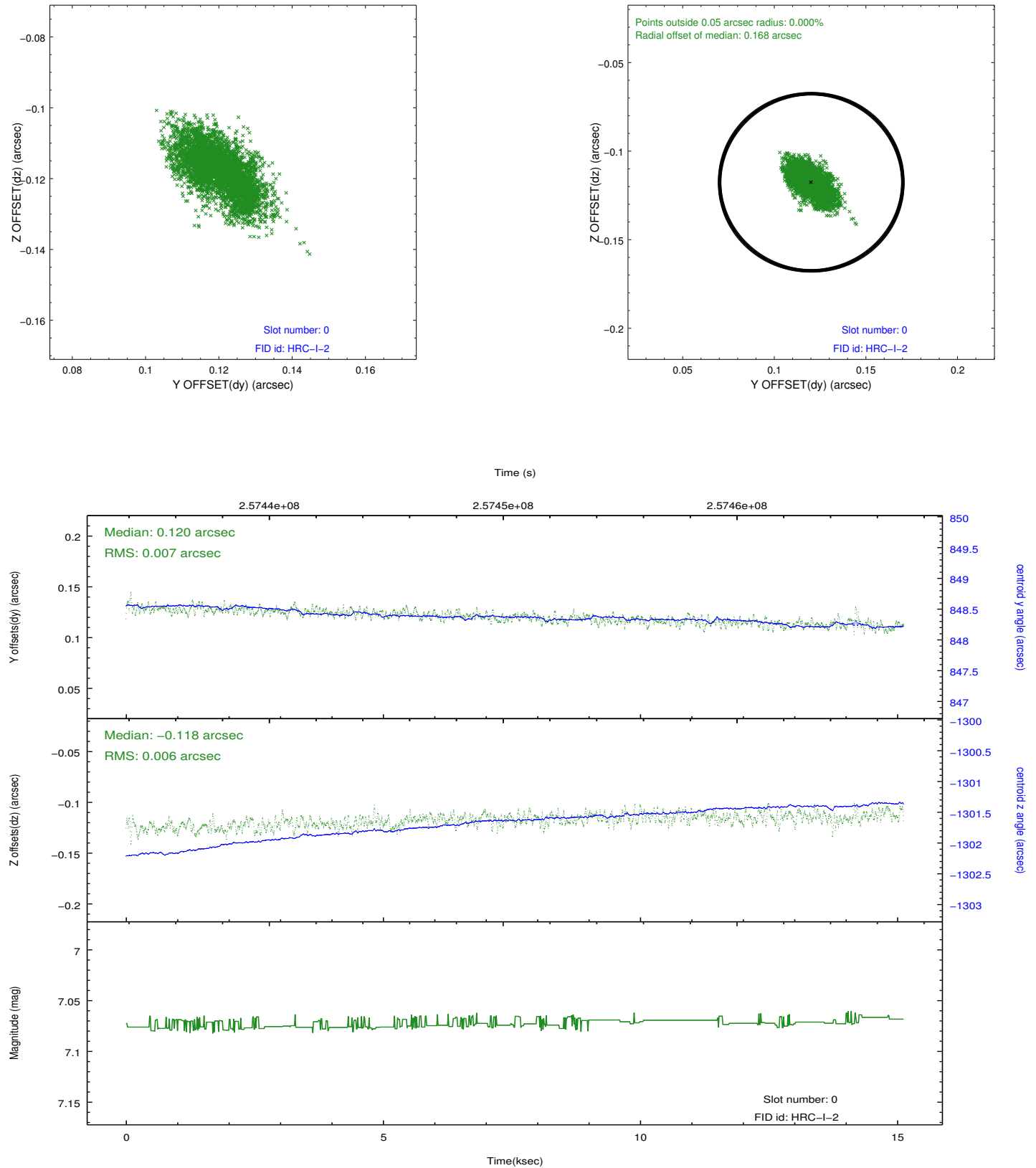


## 2.4.5 Slot 7

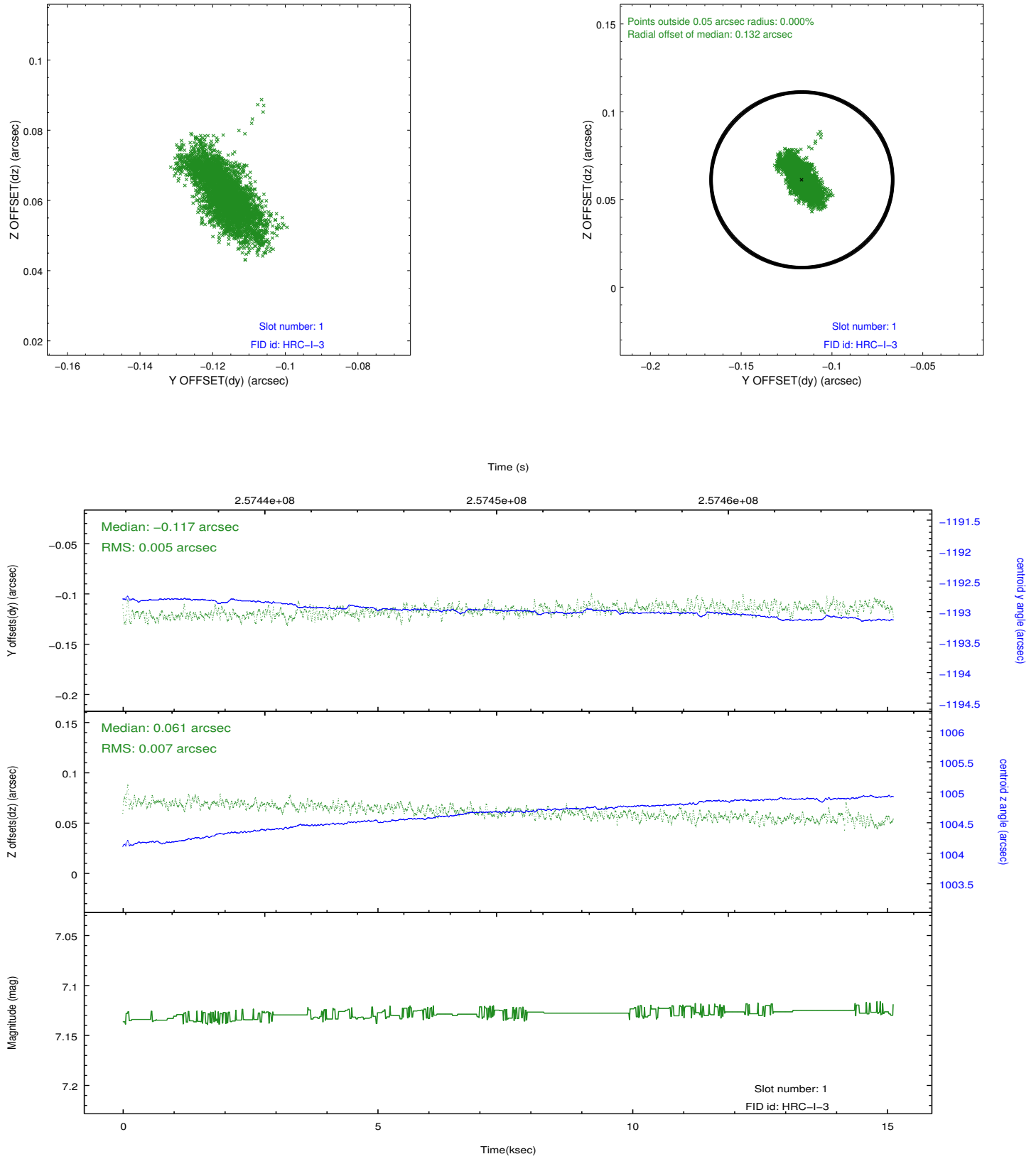


## 2.5 FID Slots

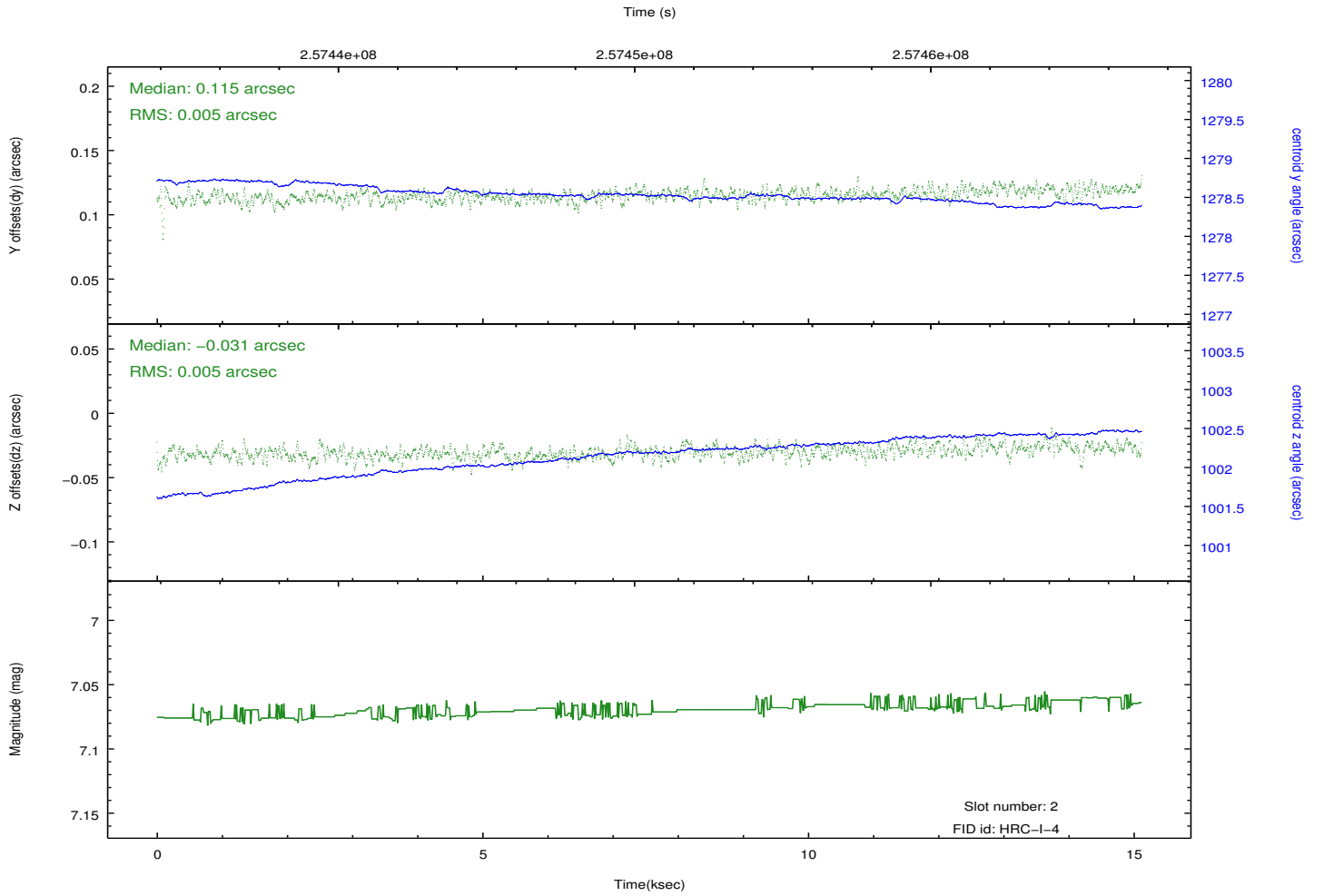
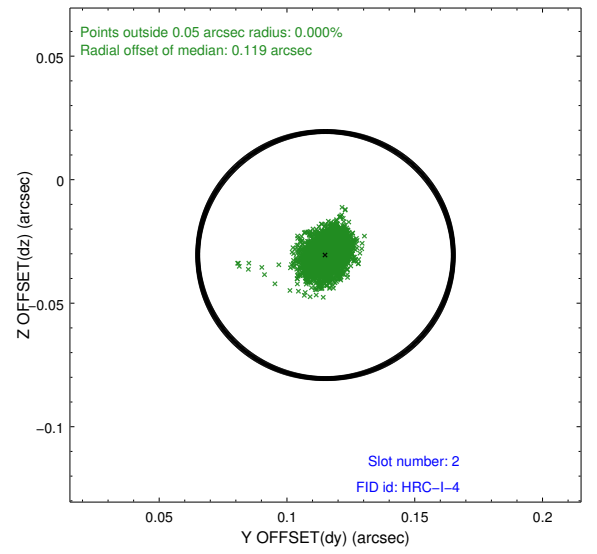
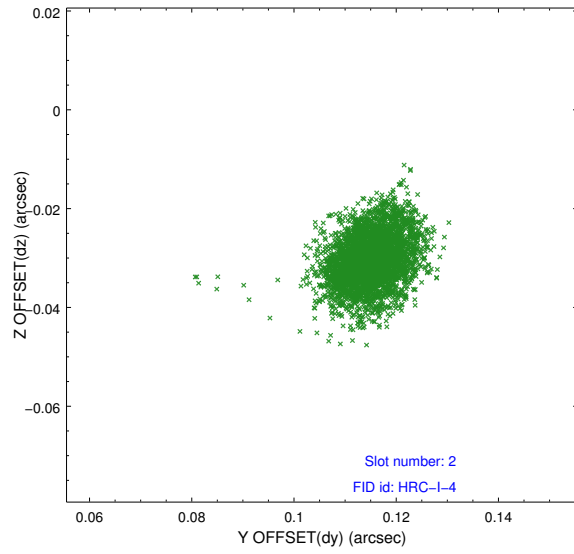
### 2.5.1 Slot 0



## 2.5.2 Slot 1



### 2.5.3 Slot 2



# A Summary

## A.1 Status

V&V Scientist	Jen Lauer
V&V Date (YYYY-MM-DD)	2012.08.13
V&V Edition	1
V&V Disposition and Status	OK
V&V Charge Time	15.1218257

## A.2 Comments

Joint proposal with NRAO. Roll constraint met. Monitoring interval is 6 days since the previous observation in the series.