

# V&V Reference Report

## L2 ASCDS Version : 8.4.3.1

Observation 6430 - L2 Version 2  
Chandra X-Ray Center

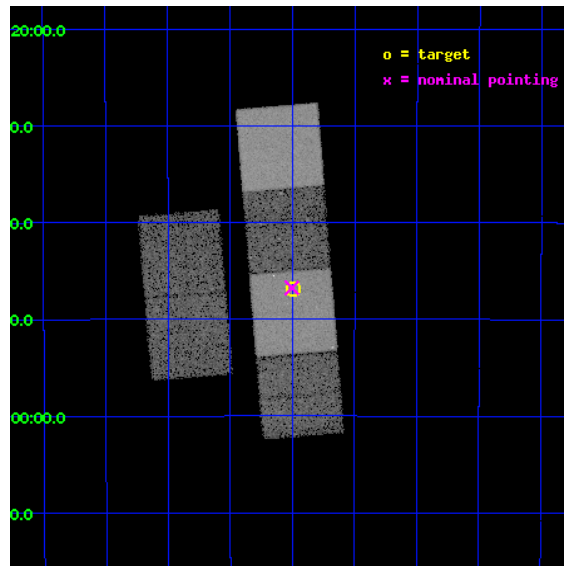
L2 Processing Date : Apr 1 2012

## Contents

<b>1</b>	<b>Front</b>	<b>2</b>
<b>2</b>	<b>OBI</b>	<b>3</b>
2.1	OBI . . . . .	3
2.1.1	Images . . . . .	3
2.1.2	Bias . . . . .	3
2.1.3	Parameters . . . . .	4
2.1.4	Events . . . . .	4
2.2	Compared Parameters . . . . .	5
2.3	Aspect . . . . .	6
2.4	Star Slots . . . . .	9
2.4.1	Slot 3 . . . . .	9
2.4.2	Slot 4 . . . . .	10
2.4.3	Slot 5 . . . . .	11
2.4.4	Slot 6 . . . . .	12
2.4.5	Slot 7 . . . . .	13
2.5	FID Slots . . . . .	14
2.5.1	Slot 0 . . . . .	14
2.5.2	Slot 1 . . . . .	15
2.5.3	Slot 2 . . . . .	16
<b>A</b>	<b>Summary</b>	<b>17</b>
A.1	Status . . . . .	17
A.2	Comments . . . . .	17

# 1 Front

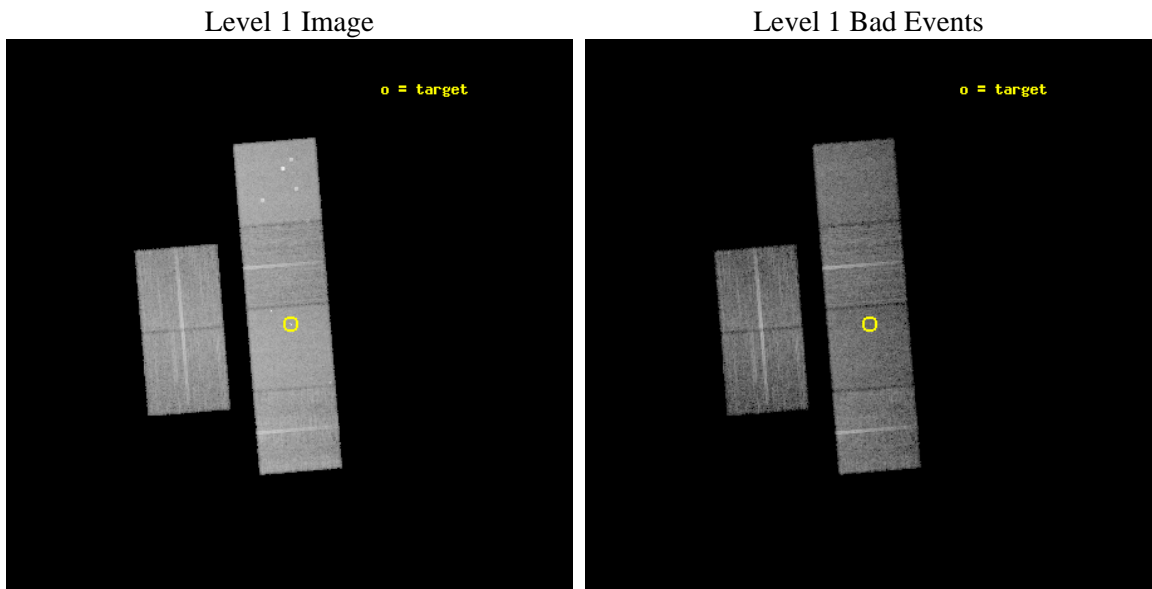
seq_num	200404	Sequence number
obs_id	6430	Observation id
title	X-Ray Activity and Winds in Young A Stars at the Epoch of Disk Clearing	Proposal title
observer	Dr. Carol Grady	Principal investigator
object	HD 169142	Source name
dtcycle	0	&#160
cycle	P	events from which exps? Prim/Second/Both
ra_targ	276.124167	Observer's specified target RA [deg]
dec_targ	-29.780389	Observer's specified target Dec [deg]
ra_nom	276.12613531828	Nominal RA [deg]
dec_nom	-29.779250276146	Nominal Dec [deg]
roll_nom	85.282532444469	Nominal Roll [deg]
revision	2	Processing version of data
ontime	10105.599962354	Sum of GTIs [s]
livetime	9977.6367707686	Livetime [s]
ontime2	10105.599962354	Sum of GTIs [s]
ontime3	10102.358982086	Sum of GTIs [s]
ontime5	10105.599962354	Sum of GTIs [s]
ontime6	10105.599962354	Sum of GTIs [s]
ontime7	10105.599962354	Sum of GTIs [s]
ontime8	10105.599962354	Sum of GTIs [s]
l2events	156137	Number of level 2 events



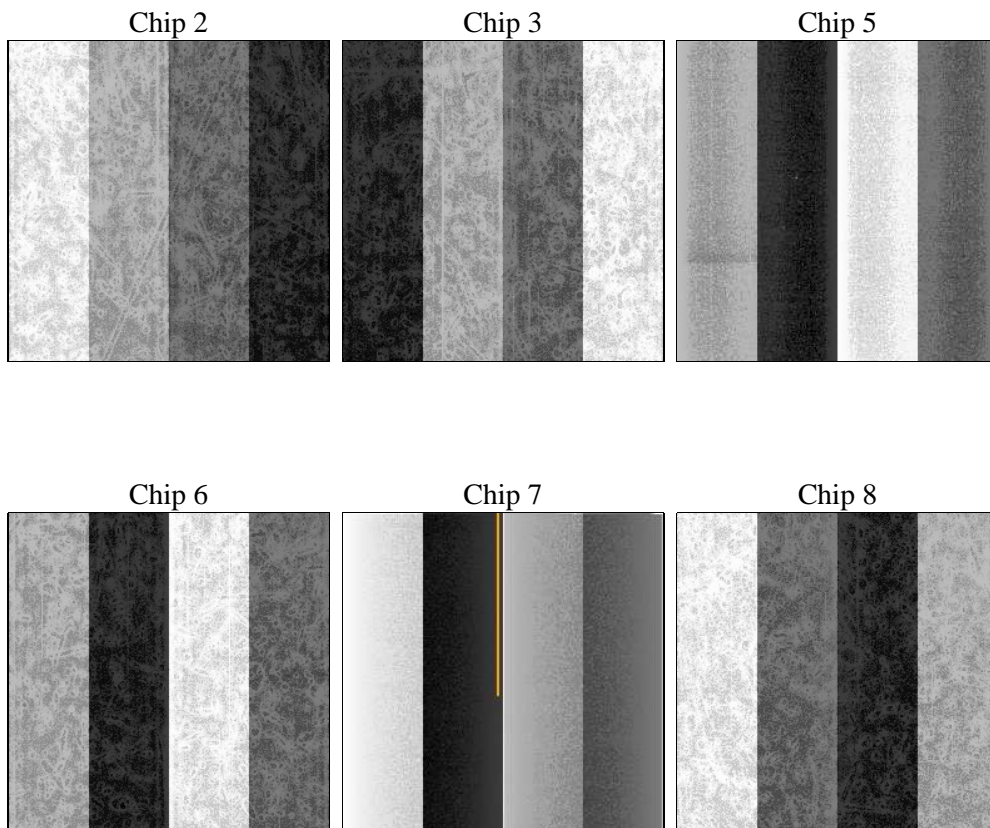
## 2 OBI

### 2.1 OBI

#### 2.1.1 Images



#### 2.1.2 Bias



### 2.1.3 Parameters

obi_num	0	Obi number	sched_exp_time	10000.000000	[s] Scheduled observation exposure time
ascdsver	8.4.3	Processing system revision	ontime	10105.599962354	Sum of GTIs [s]
caldsver	4.4.9	&#160	ontime2	10105.599962354	Sum of GTIs [s]
date	2012-04-01T04:54:12	Date and time of file creation	ontime3	10102.358982086	Sum of GTIs [s]
revision	2	Processing version of data	ontime5	10105.599962354	Sum of GTIs [s]
			ontime6	10105.599962354	Sum of GTIs [s]
			ontime7	10105.599962354	Sum of GTIs [s]
			ontime8	10105.599962354	Sum of GTIs [s]
			l1events	670858	Number of level 1 events

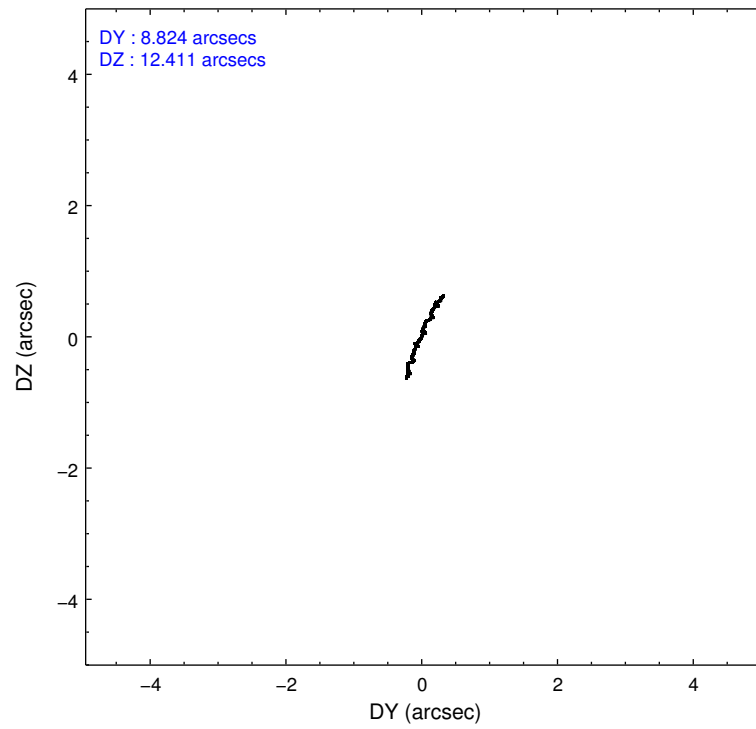
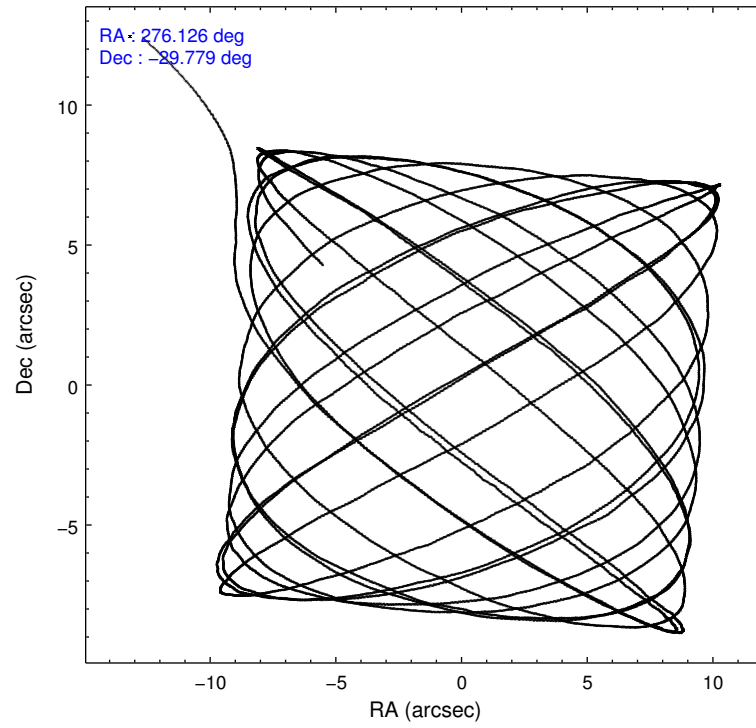
### 2.1.4 Events

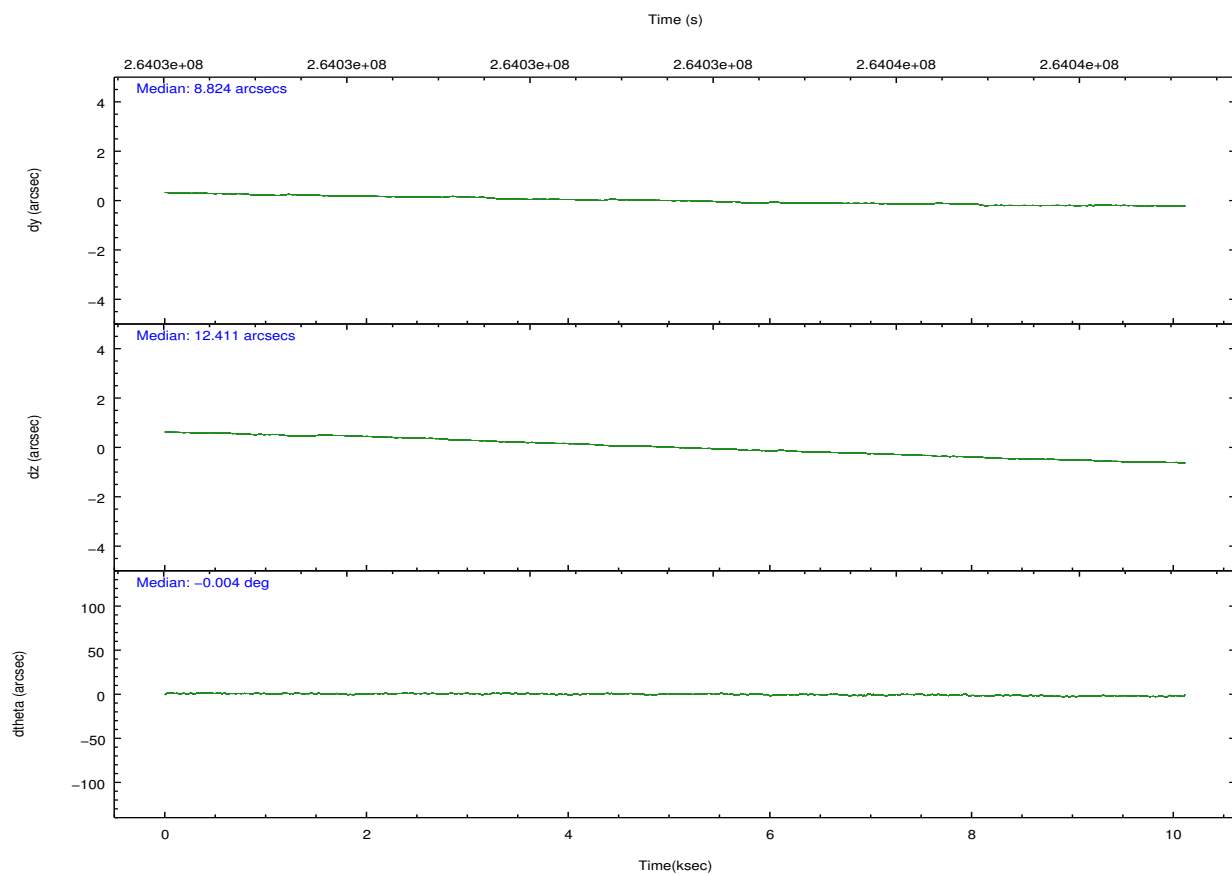
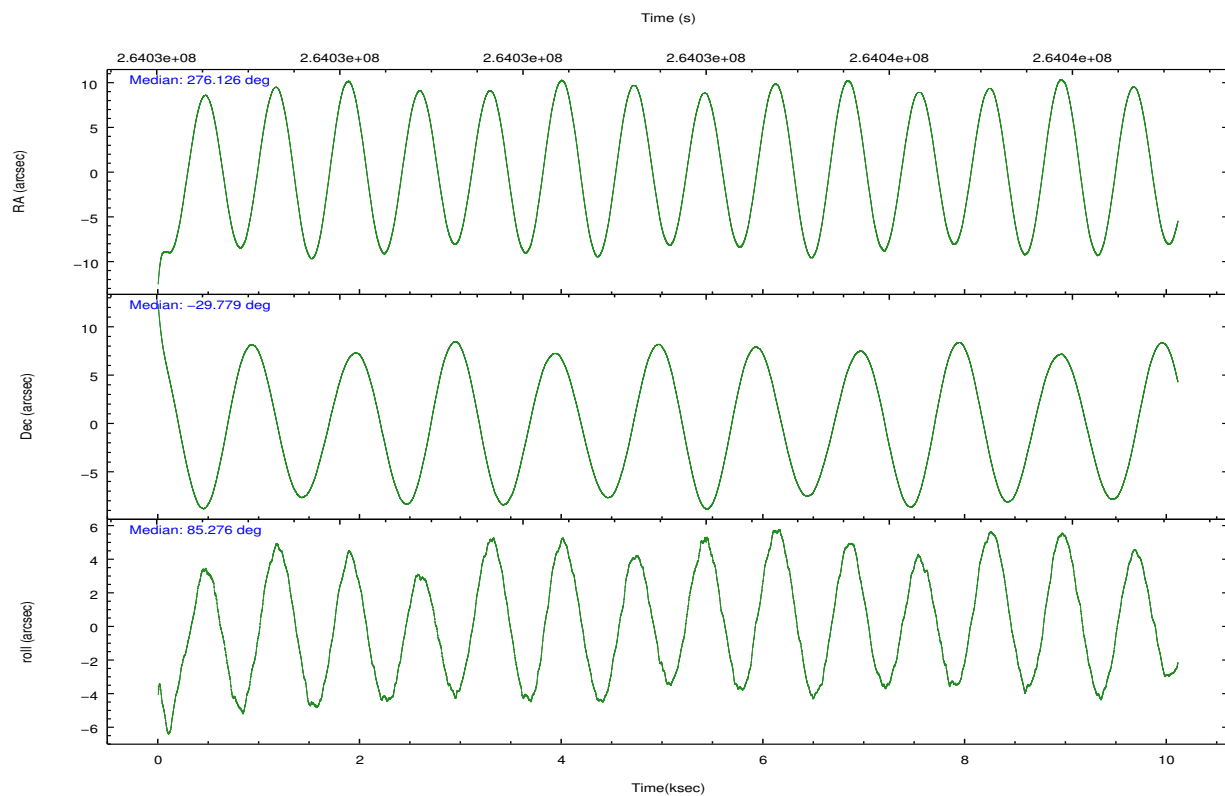
	ccd 2	ccd 3	ccd 5	ccd 6	ccd 7	ccd 8		ccd 2	ccd 3	ccd 5	ccd 6	ccd 7	ccd 8
level 1 events	96021	90148	143526	94661	130018	116484	grade 0 events	5623	5615	9983	5623	5918	9257
rejected events	84465	78756	76888	82505	75146	90499		5%	6%	6%	5%	4%	7%
rejected %	87%	87%	53%	87%	57%	77%	grade 1 events	63	71	236	59	142	87
								0%	0%	0%	0%	0%	0%
							grade 2 events	2383	2189	19553	2487	11924	5800
								2%	2%	13%	2%	9%	4%
							grade 3 events	1035	1025	2576	1118	5121	2679
								1%	1%	1%	1%	3%	2%
							grade 4 events	1028	1059	2464	1023	5045	2466
								1%	1%	1%	1%	3%	2%
							grade 5 events	3564	4259	10167	4350	11975	5804
								3%	4%	7%	4%	9%	4%
							grade 6 events	1854	1853	34056	2250	28586	6637
								1%	2%	23%	2%	21%	5%
							grade 7 events	80471	74077	64491	77751	61307	83754
								83%	82%	44%	82%	47%	71%

## 2.2 Compared Parameters

Parameter	Planned	Actual	Parameter	Planned	Actual
Instrument	ACIS	ACIS	Obspar format version number	7	7
Detector	ACIS-235678	ACIS-235678	Obspar file type	PREDICTED	ACTUAL
Grating	NONE	NONE	Obspar update status	NONE	UPDATED
Data mode	FAINT	FAINT	Number of optional ACIS chips dropped	0	0
Observation mode	POINTING	POINTING	On-chip summing requested	N	N
[deg] Pointing RA	276.139989	276.1261353182795	Subarray requested	NONE	NONE
[deg] Pointing Dec	-29.803749	-29.77925027614613	Alternating exposures requested	N	N
[deg] Pointing Roll	85.132786	85.28253244446945	[s] Primary exposure time	0.000000	3.2
[mm] SIM focus pos	-0.684267	-0.6828225247311905			
[mm] SIM defocus	0	0.001444936568705701			
[mm] SIM translation stage pos	-190.132523	-190.1400660498719			
[mm] SIM translation stage offset	0	0.00754346686406393			
[s] Observation start time (MET)	264028644.184000	264027447.61626			
Observation start date	2006-05-14T21:16:19	2006-05-14T20:57:27			
[s] Observation end time (MET)	264038644.184000	264039431.40432			
Observation end date	2006-05-15T00:02:59	2006-05-15T00:17:11			
Read mode	TIMED	TIMED			

## 2.3 Aspect



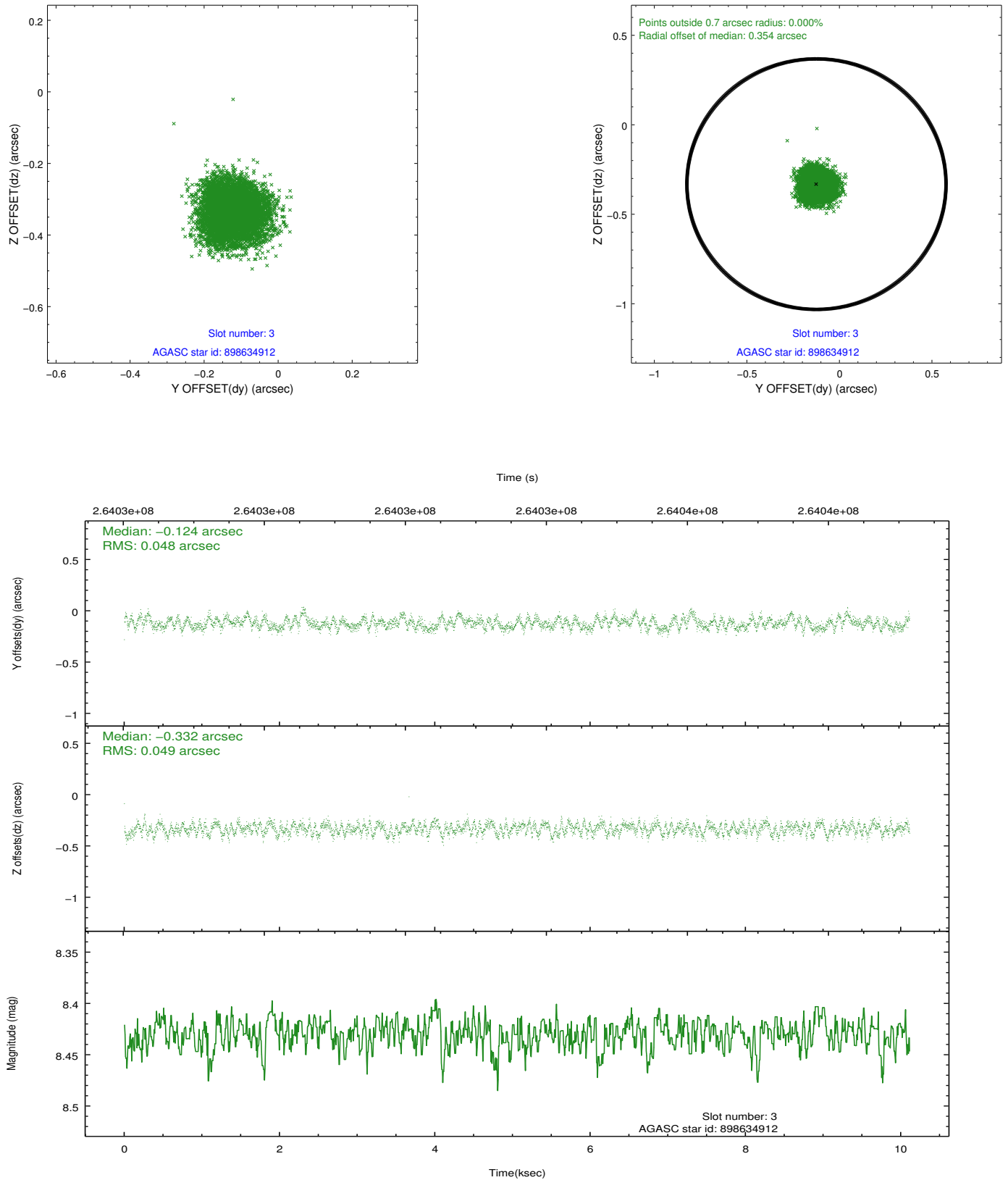


### Slot Statistics

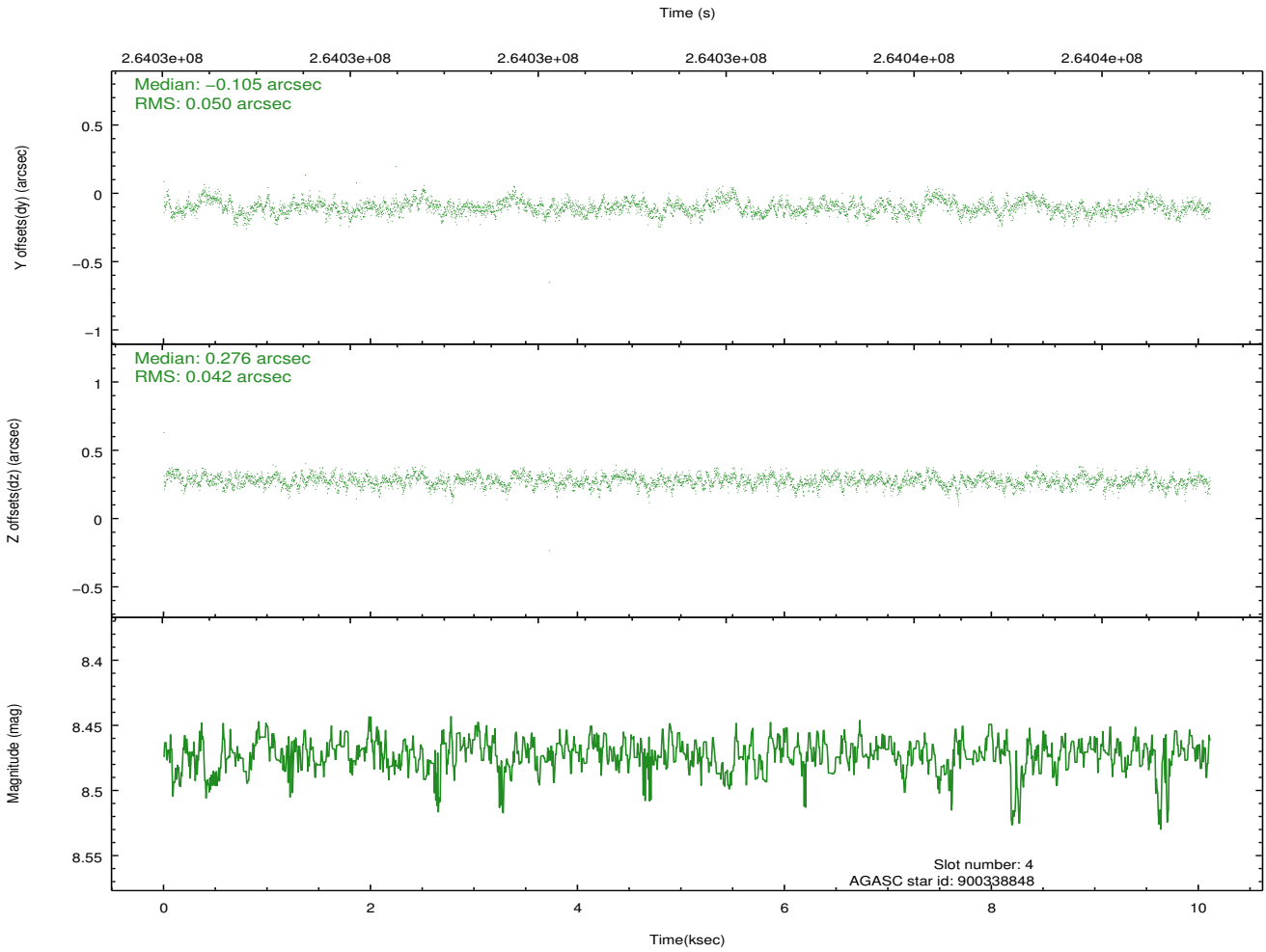
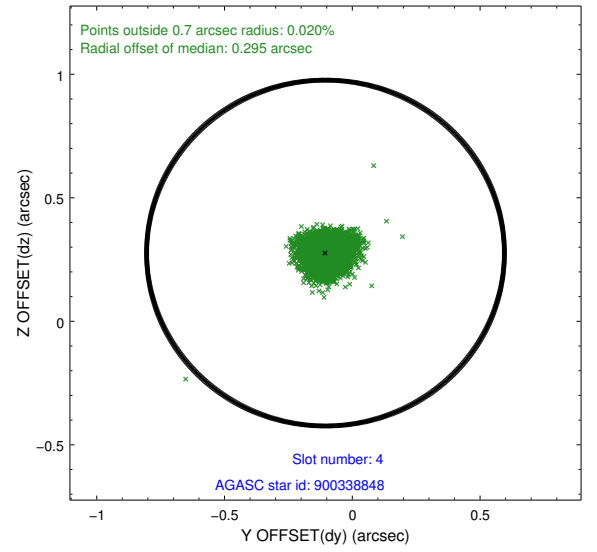
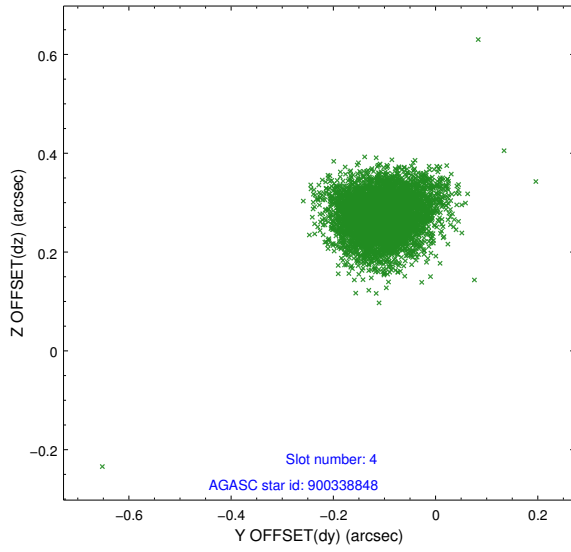
slot	status	id	mag	n_pts	med_dy	med_dz	dr1	dr2	ra	dec	mean_y	mean_z
0	FID	ACIS-S-2	7.11	2467	-0.012	-0.030	0.014	0.023	0.000000	0.000000	-761.65	-1733.75
1	FID	ACIS-S-4	7.20	2467	0.117	0.014	0.012	0.020	0.000000	0.000000	2151.53	174.22
2	FID	ACIS-S-5	7.23	2467	-0.137	0.025	0.017	0.027	0.000000	0.000000	-1813.94	168.51
3	GUIDE	898634912	8.43	4933	-0.124	-0.332	0.074	0.113	275.480072	-29.835888	-296.29	2042.59
4	GUIDE	900338848	8.47	4933	-0.105	0.276	0.069	0.113	276.772089	-29.508256	1222.74	-1882.80
5	GUIDE	969023128	8.88	4930	0.226	-0.063	0.076	0.127	275.691265	-30.140601	-1329.15	1288.17
6	GUIDE	969026168	6.91	4934	0.124	0.192	0.051	0.083	276.670048	-30.393325	-1979.19	-1820.52
7	GUIDE	898638680	9.18	4932	-0.124	-0.072	0.095	0.163	276.111546	-29.164280	2285.73	284.18

## 2.4 Star Slots

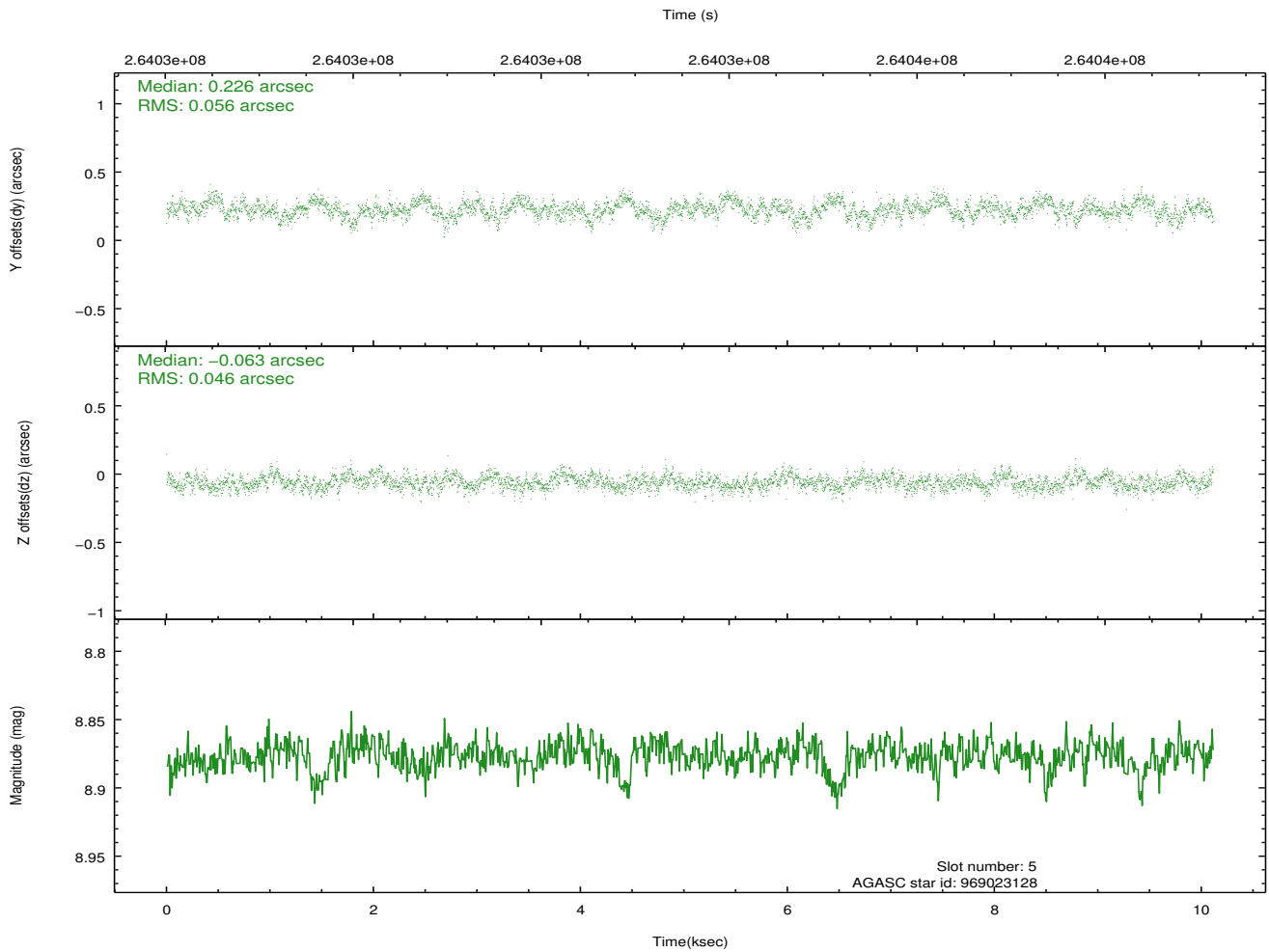
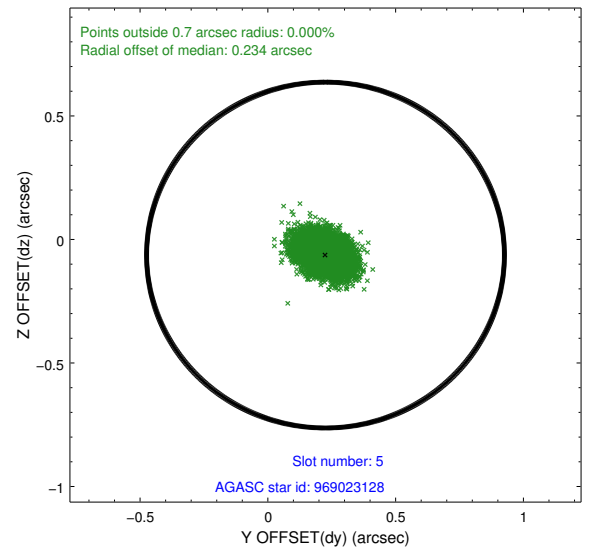
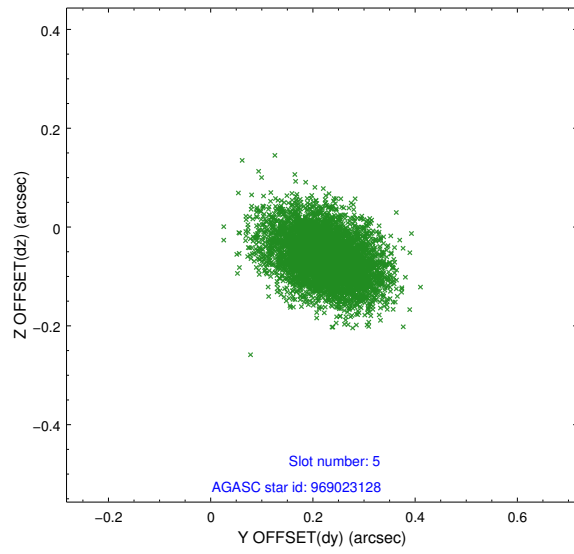
### 2.4.1 Slot 3



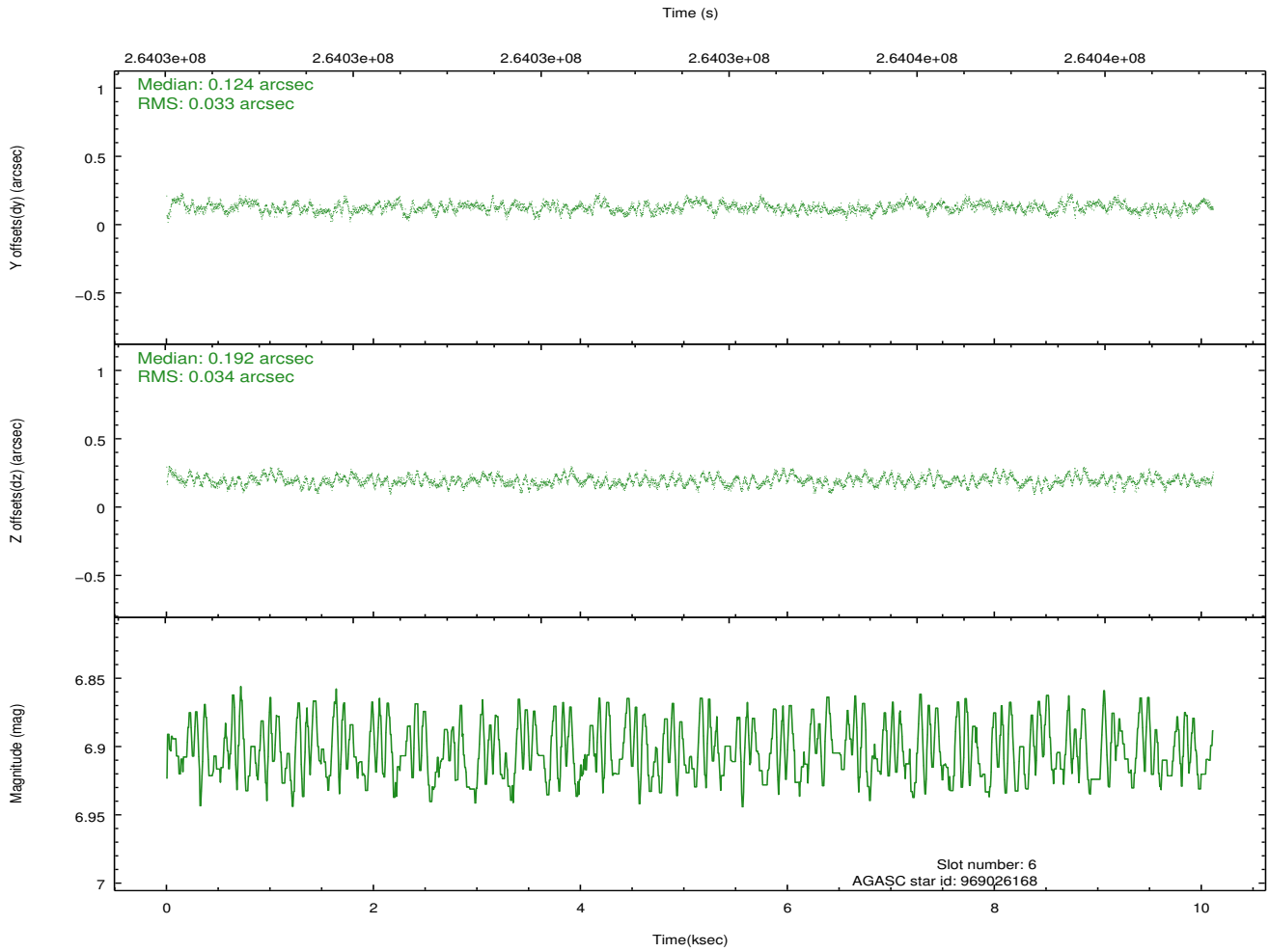
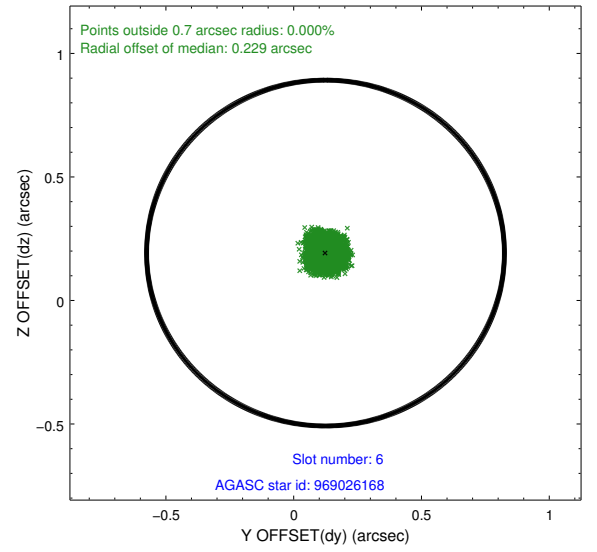
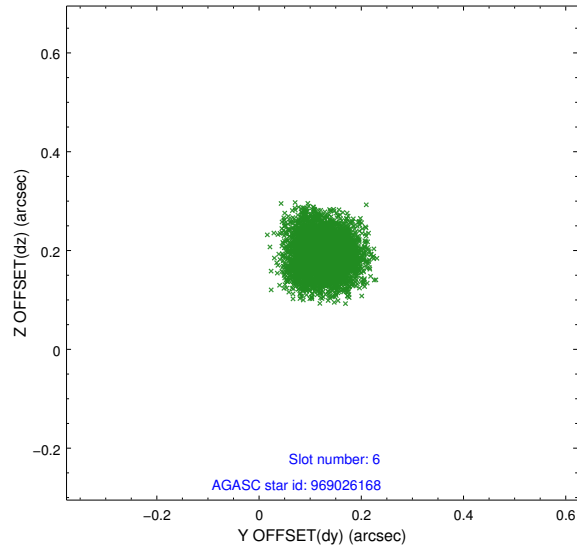
## 2.4.2 Slot 4



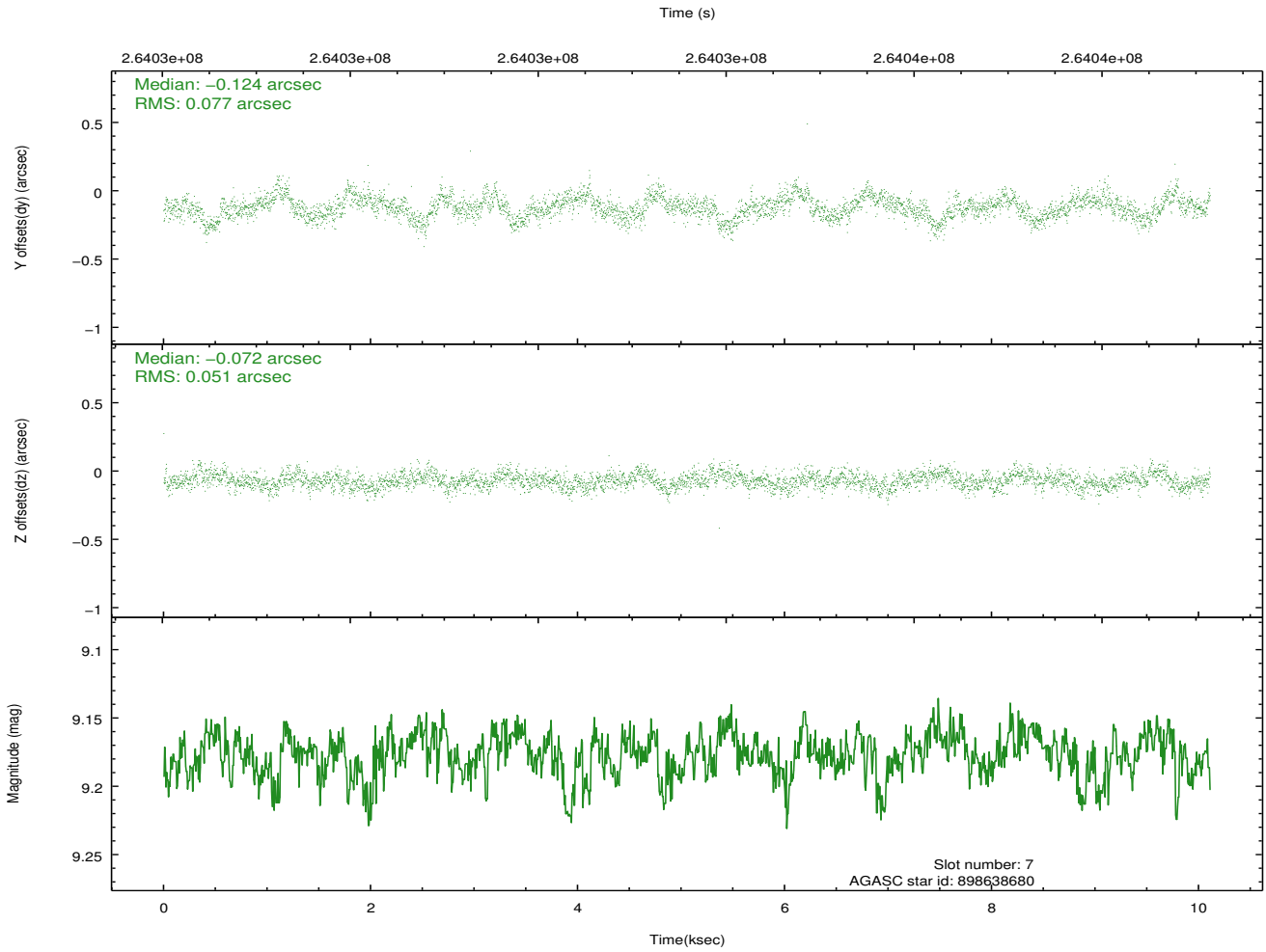
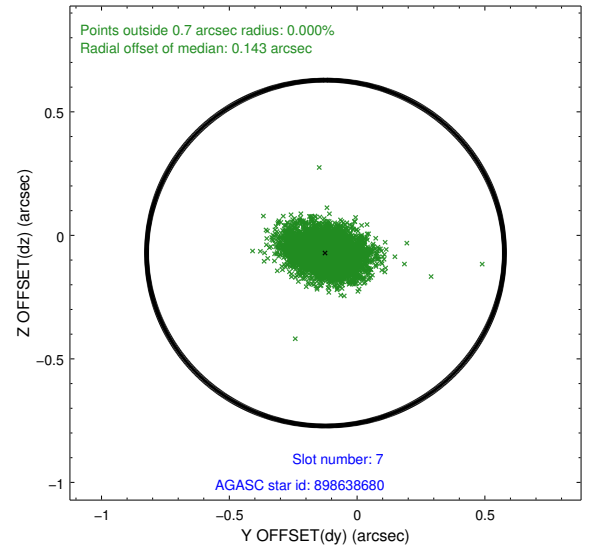
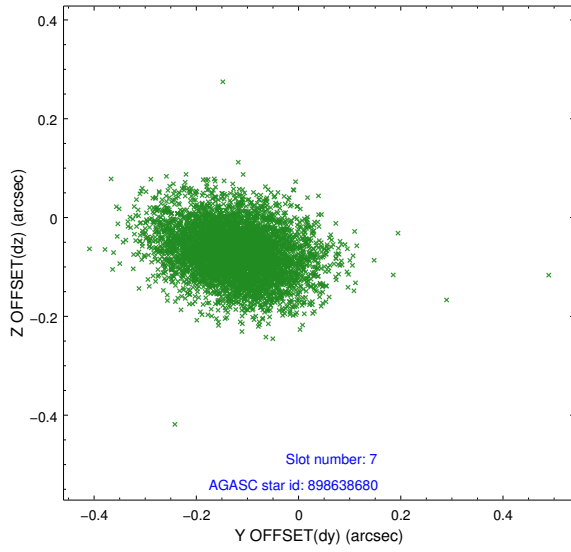
### 2.4.3 Slot 5



## 2.4.4 Slot 6

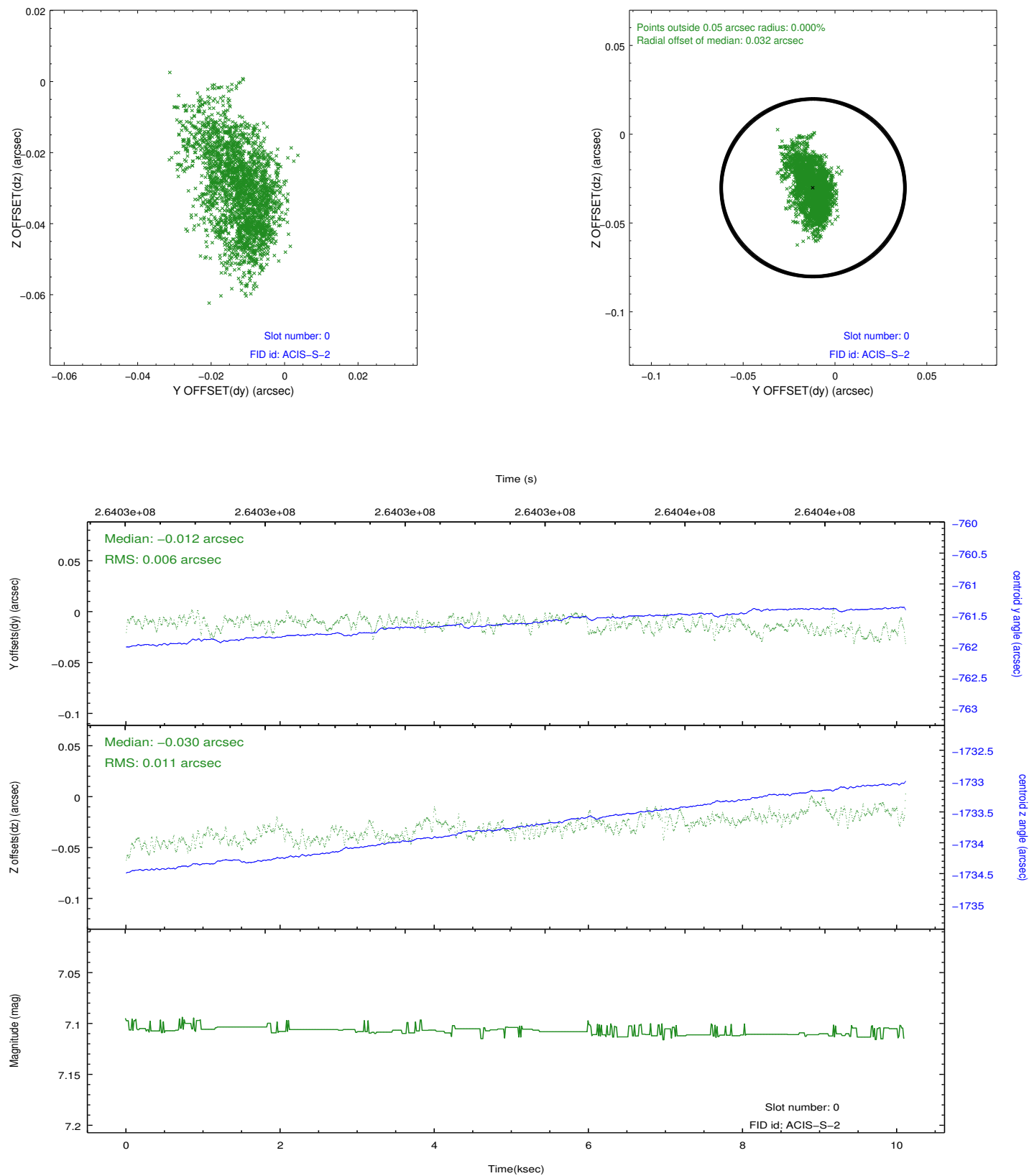


## 2.4.5 Slot 7

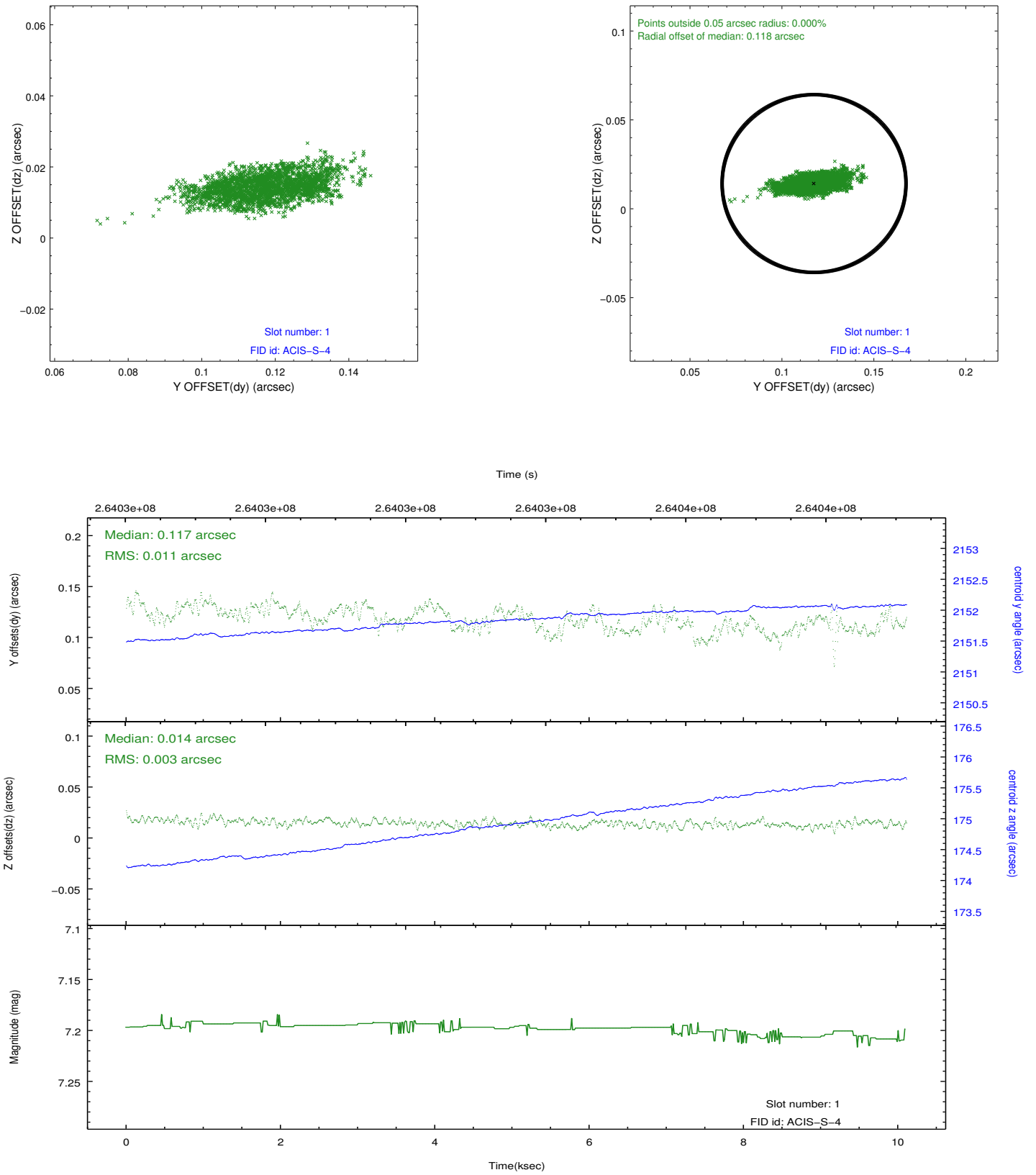


## 2.5 FID Slots

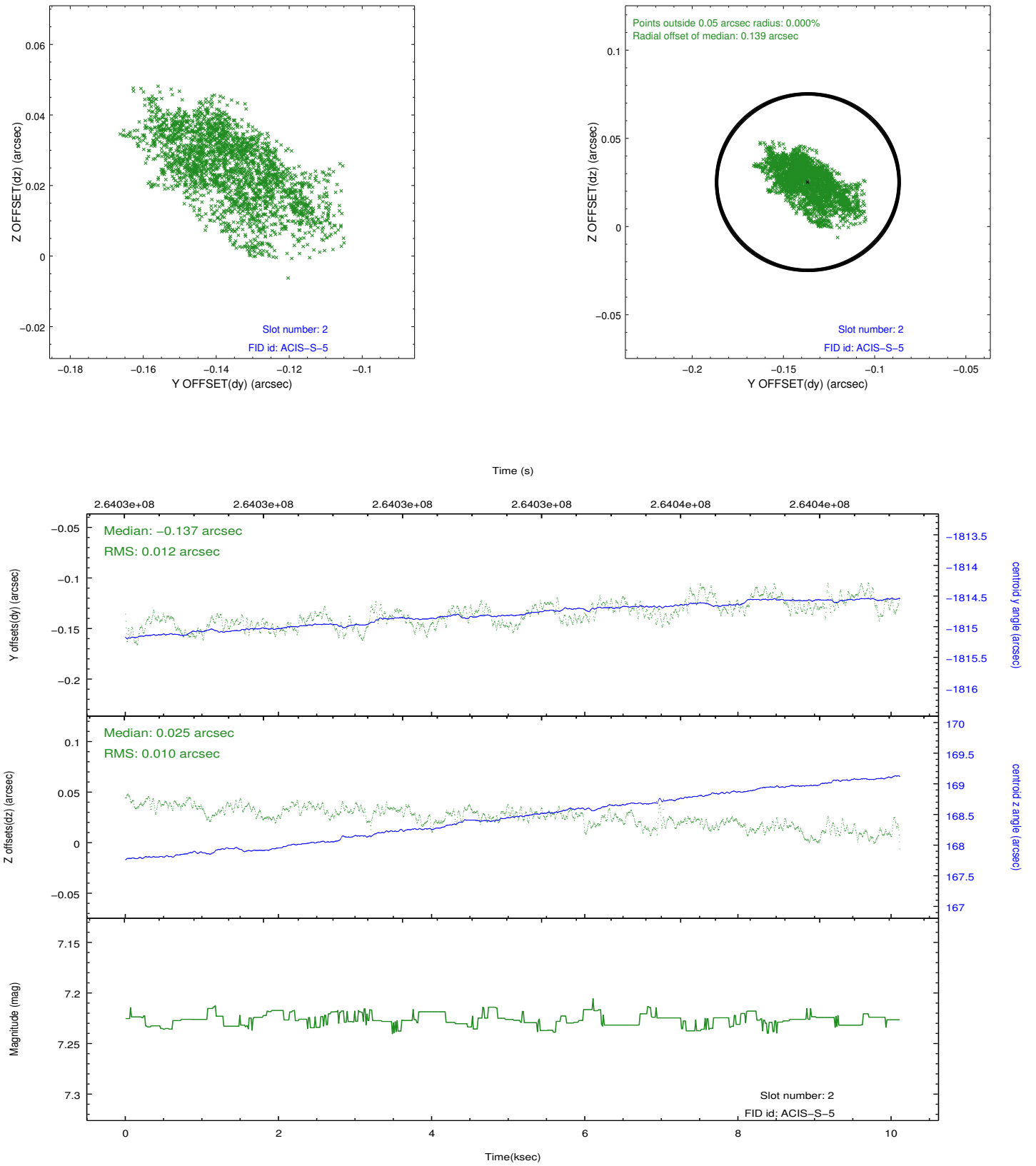
### 2.5.1 Slot 0



## 2.5.2 Slot 1



### 2.5.3 Slot 2



# A Summary

## A.1 Status

V&V Scientist	Jen Lauer
V&V Date (YYYY-MM-DD)	2012.04.03
V&V Edition	1
V&V Disposition and Status	OK
V&V Charge Time	10.1055999

## A.2 Comments

Joint Proposal: HST