

V&V Reference Report

L2 ASCDS Version : 7.6.7

Observation 6260 - L2 Version 002
Chandra X-Ray Center

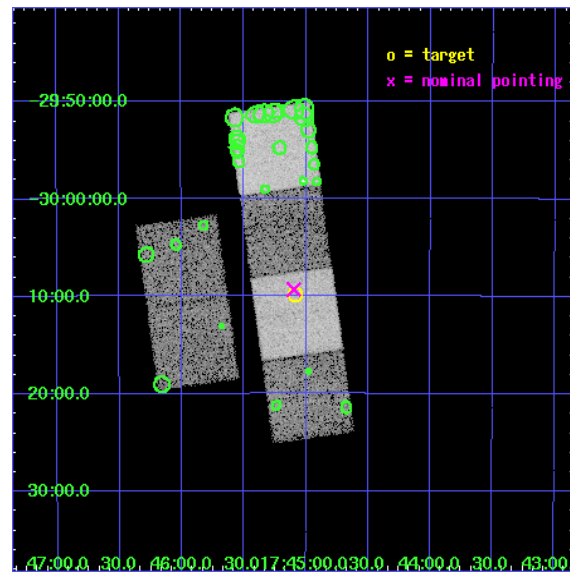
L2 Processing Date: Mar 2 2006

Contents

1	Front	2
2	OBI	3
2.1	OBI	3
2.1.1	Images	3
2.1.2	Bias	3
2.1.3	Parameters	4
2.1.4	Events	4
2.2	Compared Parameters	5
2.3	Aspect	6
2.4	Star Slots	9
2.4.1	Slot 3	9
2.4.2	Slot 4	10
2.4.3	Slot 5	11
2.4.4	Slot 6	12
2.4.5	Slot 7	13
2.5	FID Slots	14
2.5.1	Slot 0	14
2.5.2	Slot 1	15
2.5.3	Slot 2	16
3	Point Sources	17
A	Summary	18
A.1	Status	18
A.2	Comments	18

1 Front

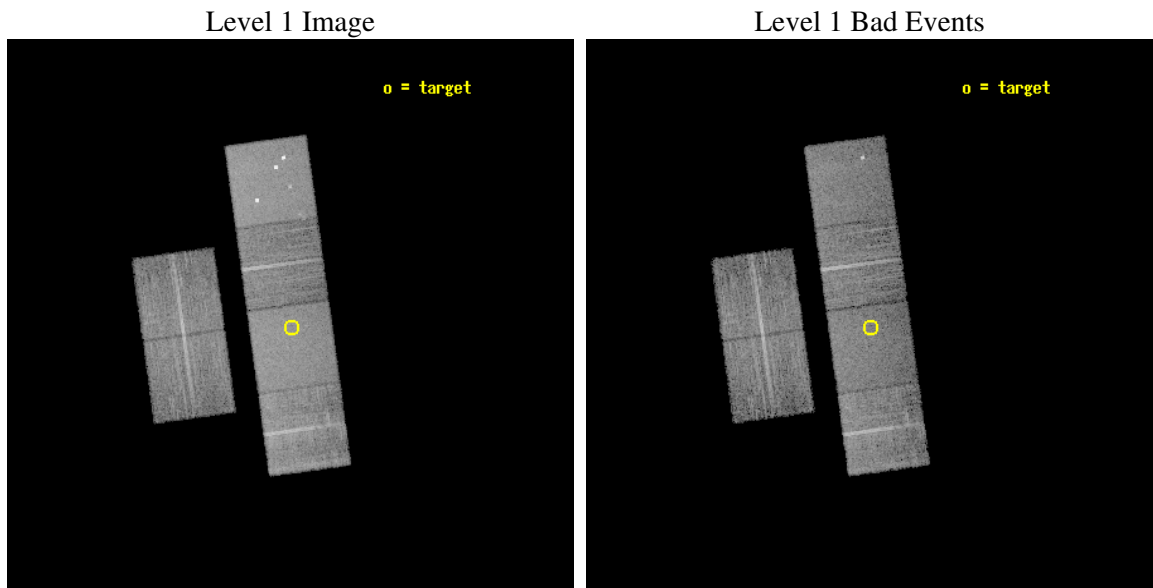
seq_num	500600
obs_id	6260
title	X-ray observation of a unique radio transient near the Galactic Center
observer	Dr Scott Hyman
object	GCRT J1745-3009
dtcycle	0
cycle	P
ra_targ	266.270833
dec_targ	-30.164444
ra_nom	266.2742056126
dec_nom	-30.155261868581
roll_nom	82.137977666328
revision	2
ontime	10140.799962223
livetime	10012.391047044
ontime2	10140.799962223
ontime3	10140.799962223
ontime5	10140.799962223
ontime6	10140.799962223
ontime7	10140.799962223
ontime8	10140.799962223
l2events	124476



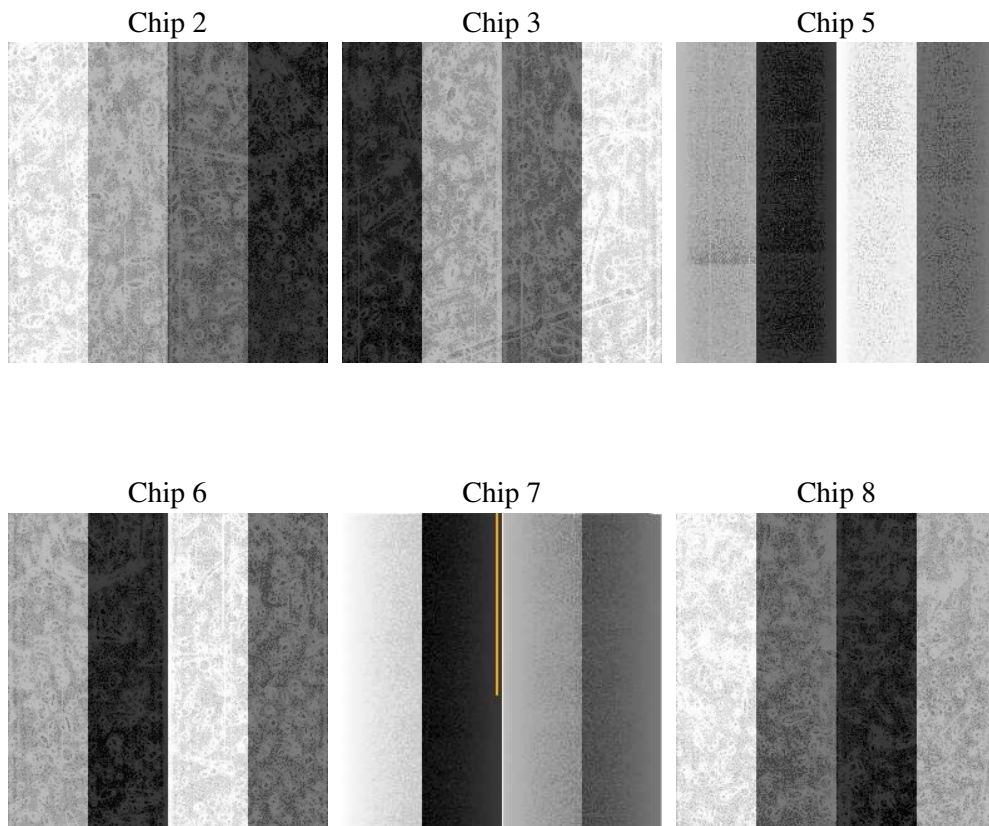
2 OBI

2.1 OBI

2.1.1 Images



2.1.2 Bias



2.1.3 Parameters

obi_num	0
ascdsver	7.6.7
caldbver	3.2.1
date	2006-03-02T10:46:18
revision	2

sched_exp_time	10000.000000
ontime	10355.015191525
ontime2	10355.015171617
ontime3	10355.015191525
ontime5	10355.015191525
ontime6	10355.015171617
ontime7	10355.015191525
ontime8	10355.015171617
l1events	568012

2.1.4 Events

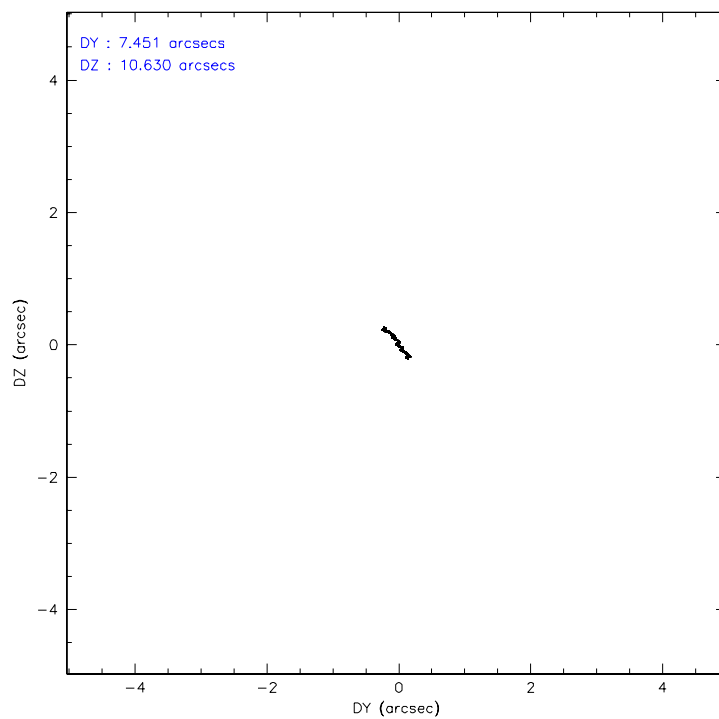
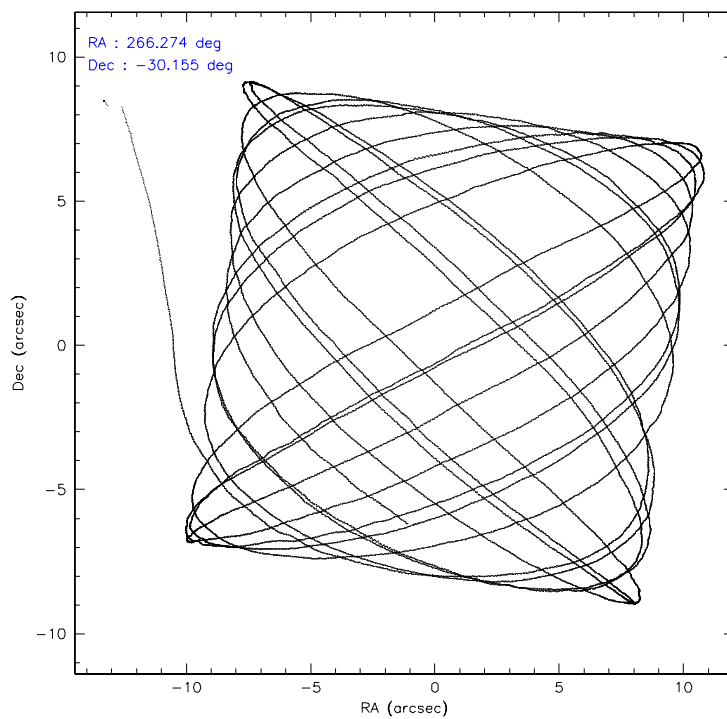
	ccd 2	ccd 3	ccd 5	ccd 6	ccd 7	ccd 8
level 1 events	80162	77122	123426	79172	105913	102217
rejected events	69828	67607	66958	69095	65591	80310
rejected %	87%	87%	54%	87%	61%	78%

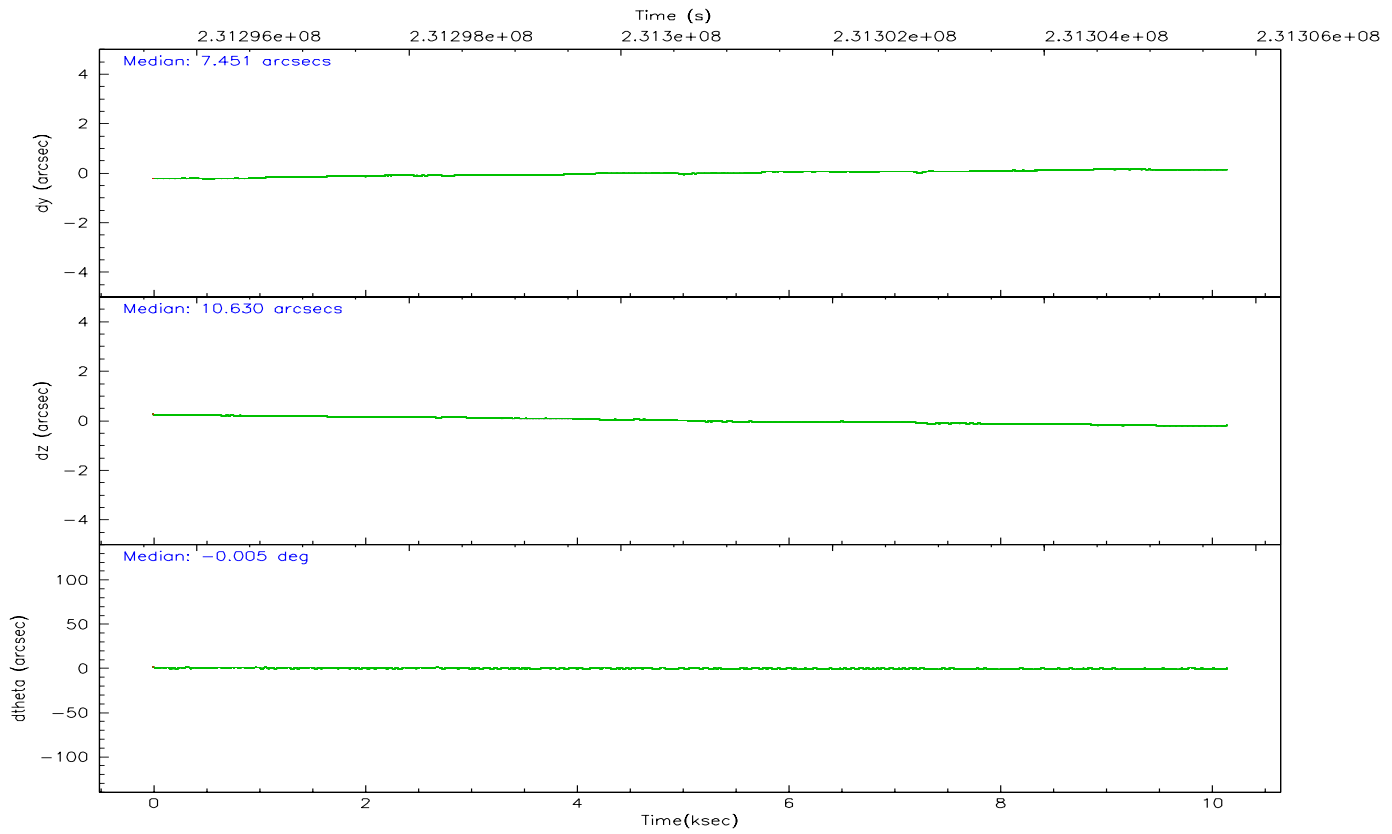
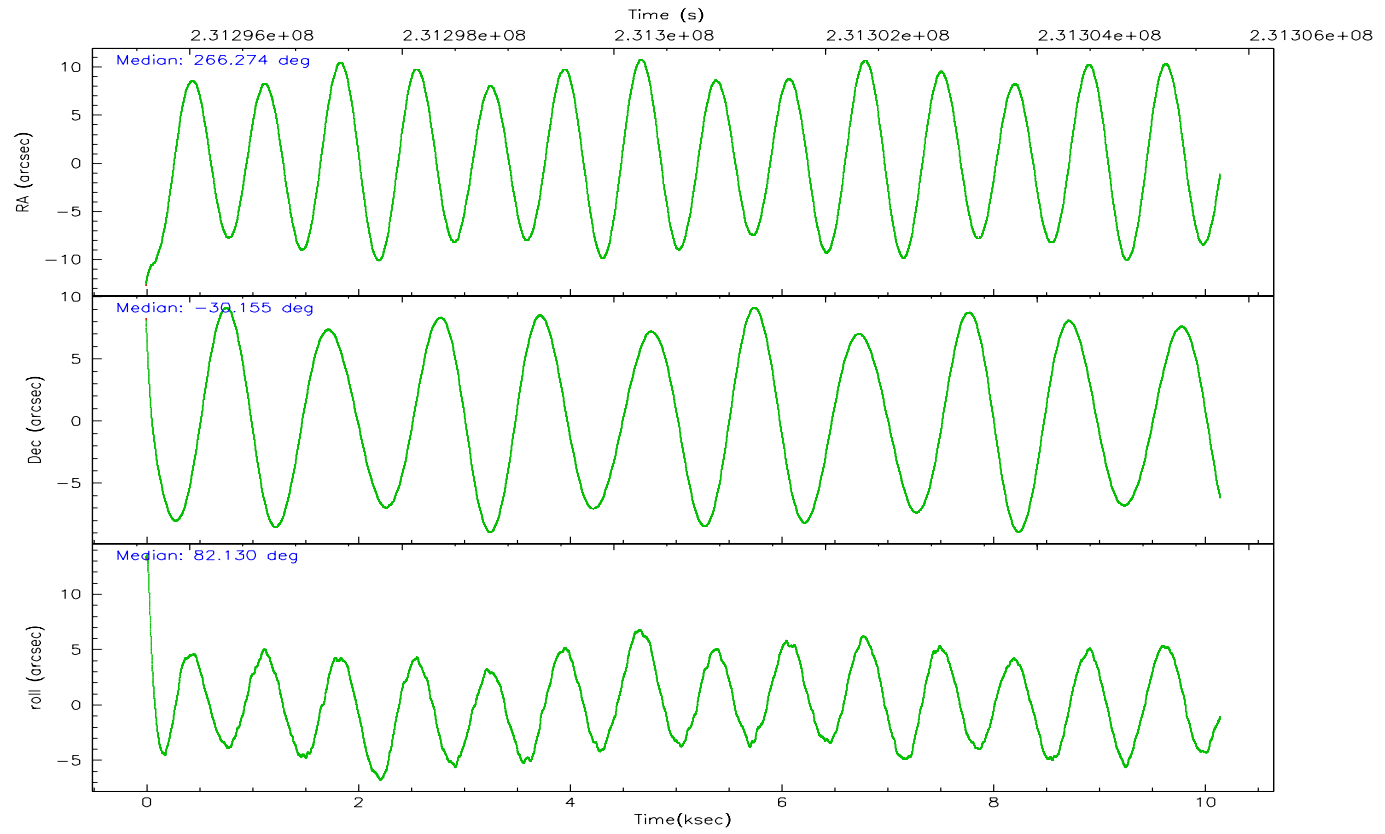
	ccd 2	ccd 3	ccd 5	ccd 6	ccd 7	ccd 8
grade 0 events	5062	4514	7473	4461	2190	7467
	6%	5%	6%	5%	2%	7%
grade 1 events	68	56	97	56	64	74
	0%	0%	0%	0%	0%	0%
grade 2 events	2074	1795	17939	2105	10201	4817
	2%	2%	14%	2%	9%	4%
grade 3 events	939	920	1228	874	2075	2317
	1%	1%	0%	1%	1%	2%
grade 4 events	905	902	1188	892	2018	2130
	1%	1%	0%	1%	1%	2%
grade 5 events	3059	3378	5980	3658	6843	4633
	3%	4%	4%	4%	6%	4%
grade 6 events	1574	1563	29816	1959	24681	5699
	1%	2%	24%	2%	23%	5%
grade 7 events	66481	63994	59705	65167	57841	75080
	82%	82%	48%	82%	54%	73%

2.2 Compared Parameters

Parameter	Planned	Actual	Parameter	Planned	Actual
Instrument	ACIS	ACIS	Obspar format version number	6	6
Detector	ACIS-235678	ACIS-235678	Obspar file type	PREDICTED	ACTUAL
Grating	NONE	NONE	Obspar update status	NONE	UPDATED
Data mode	FAINT	FAINT	On-chip summing requested	N	N
Observation mode	POINTING	POINTING	Subarray requested	NONE	NONE
Pointing RA	266.286540	266.2742056125986	Alternating exposures requested	N	N
Pointing Dec	-30.180326	-30.15526186858101	Primary exposure time	0.000000	3.2
Pointing Roll	81.987526	82.13797766632754			
SIM focus pos (mm)	-0.684267	-0.6828225247311905			
SIM defocus (mm)	0	0.001444936568705701			
SIM translation stage pos (mm)	-190.132523	-190.1400660498719			
SIM translation stage offset (mm)	0	0.00754346686406393			
Observation start time	231295726.184000	231294569.76919			
Observation start date	2005-05-01T00:47:42	2005-05-01T00:29:29			
Observation end time	231305726.184000	231307189.05726			
Observation end date	2005-05-01T03:34:22	2005-05-01T03:59:49			
Read mode	TIMED	TIMED			

2.3 Aspect



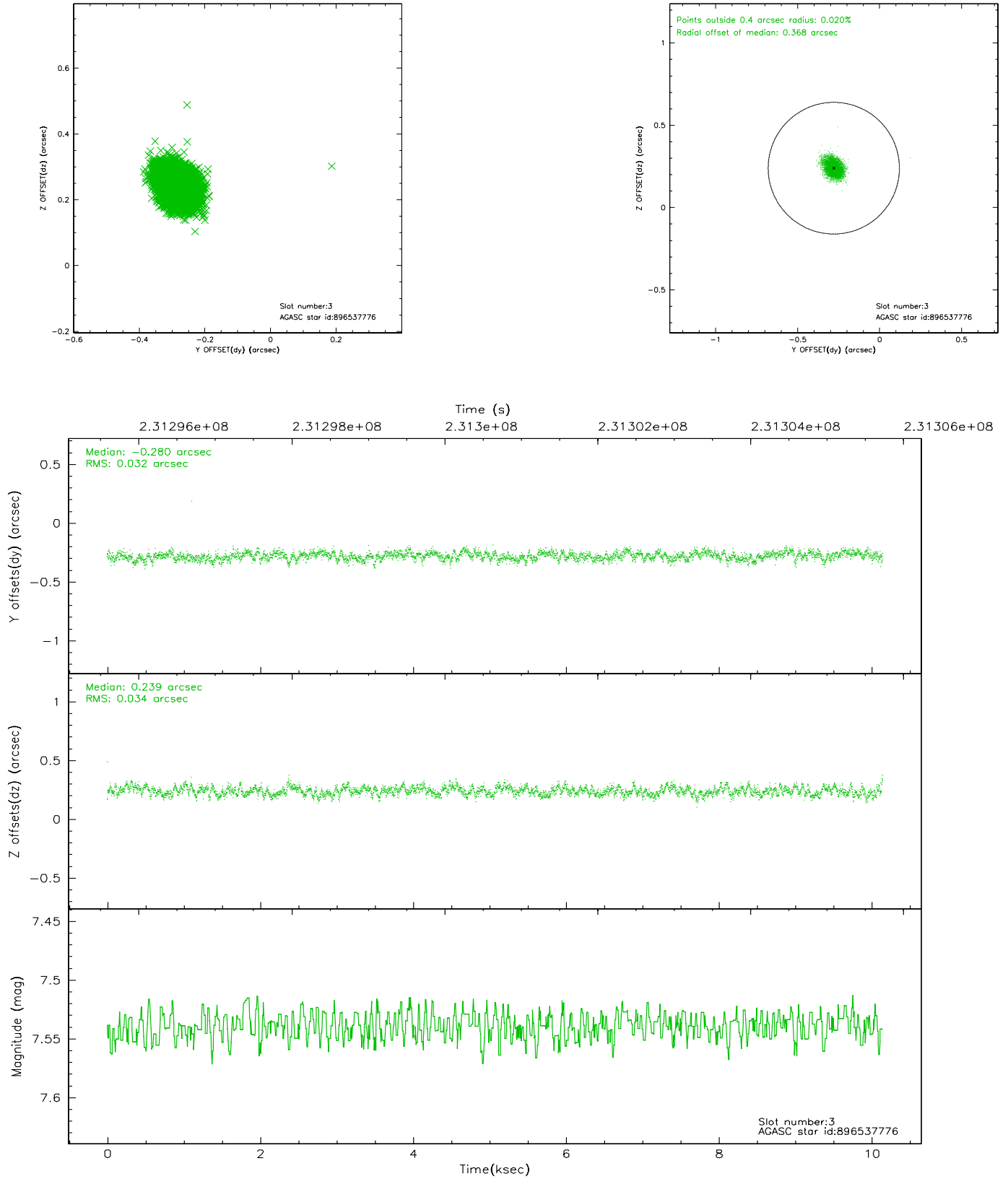


Slot Statistics

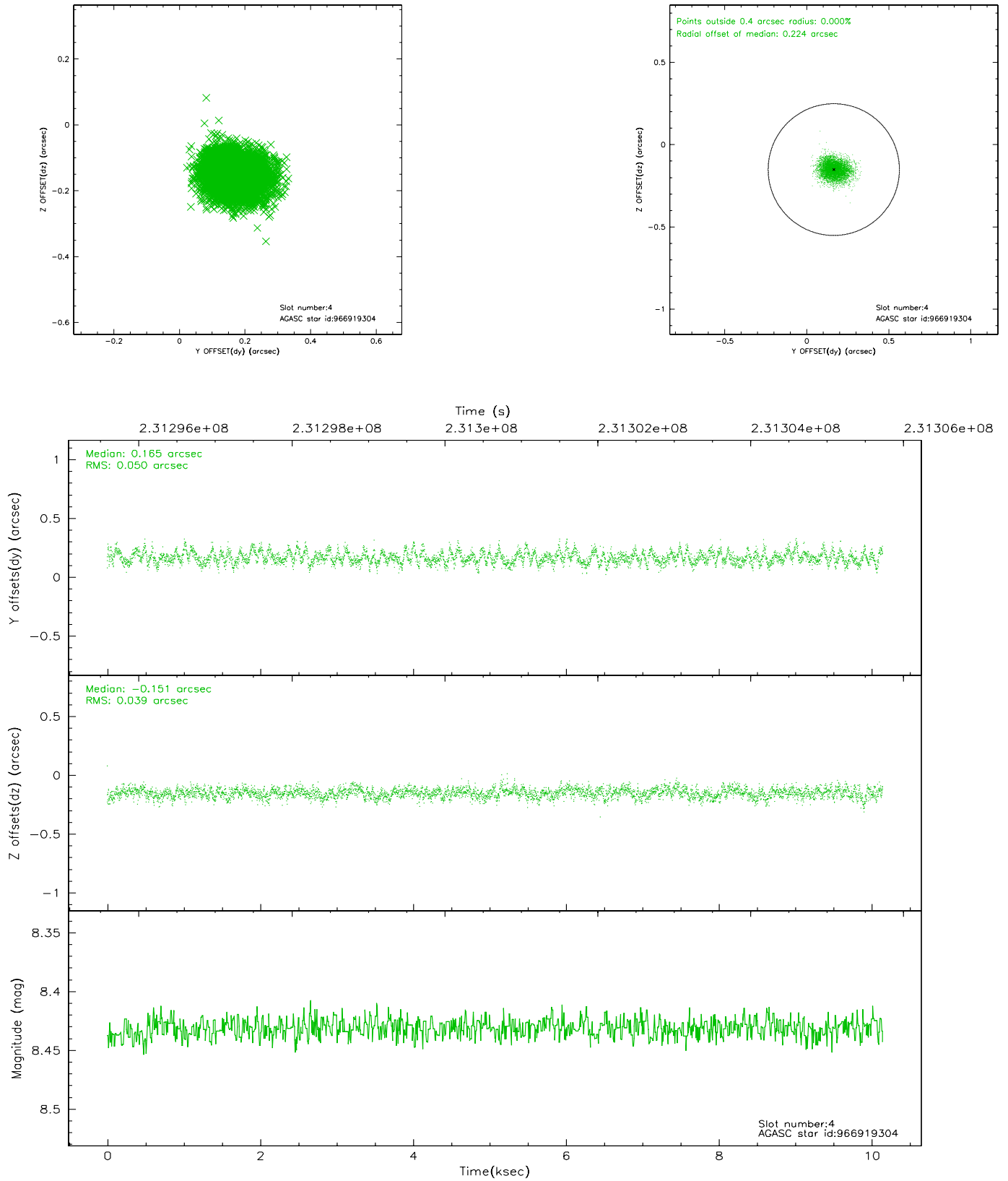
slot	status	id	mag	n_pts	med_dy	med_dz	dr1	dr2	ra	dec	mean_y	mean_z
0	FID	ACIS-S-2	7.10	2476	-0.041	-0.001	0.007	0.012	0.000000	0.000000	-760.20	-1731.93
1	FID	ACIS-S-4	7.20	2476	0.064	0.020	0.008	0.014	0.000000	0.000000	2152.90	176.10
2	FID	ACIS-S-5	7.23	2475	-0.054	-0.011	0.009	0.015	0.000000	0.000000	-1812.43	170.24
3	GUIDE	896537776	7.54	4950	-0.280	0.239	0.050	0.080	266.655684	-29.665673	1993.80	-884.90
4	GUIDE	966919304	8.43	4949	0.165	-0.151	0.067	0.109	265.660763	-30.717261	-2188.89	1647.17
5	GUIDE	966920024	8.86	4940	0.247	-0.257	0.084	0.135	265.515080	-30.492187	-1453.76	2212.15
6	GUIDE	966924920	8.08	4949	-0.040	-0.064	0.065	0.102	265.875401	-30.176961	-168.98	1268.84
7	GUIDE	966923896	8.96	4949	-0.095	0.235	0.075	0.123	267.026258	-30.213470	195.52	-2295.80

2.4 Star Slots

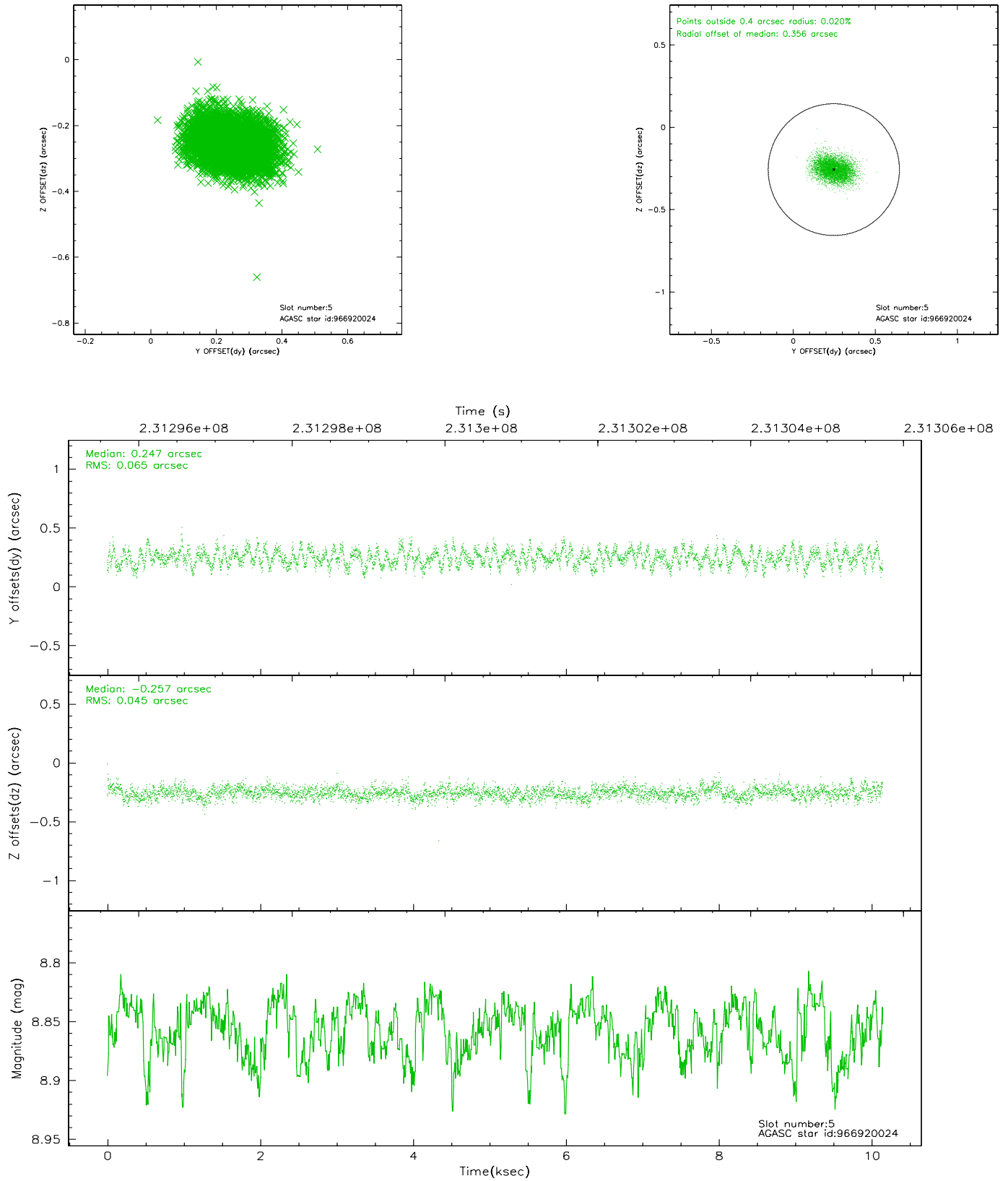
2.4.1 Slot 3



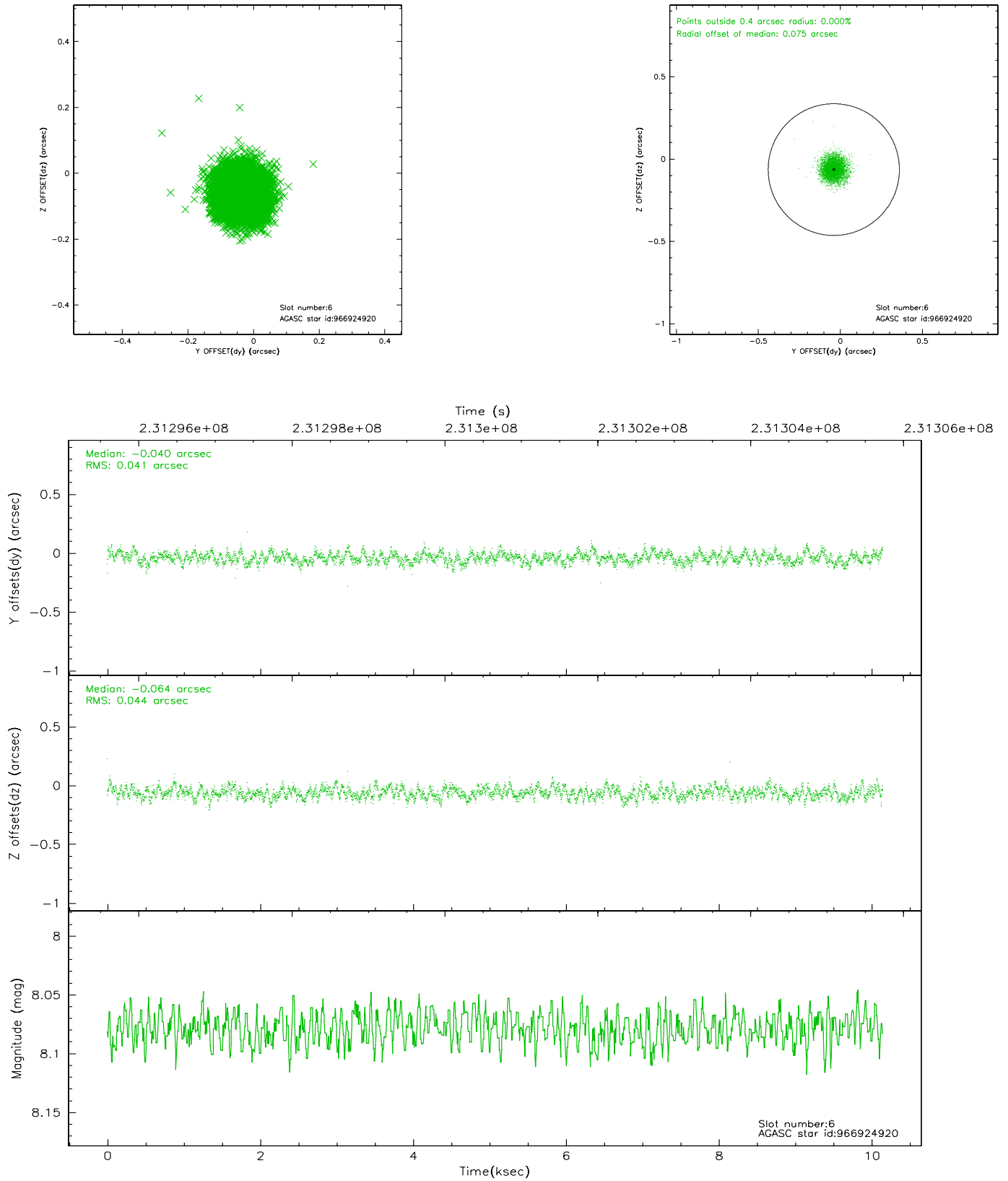
2.4.2 Slot 4



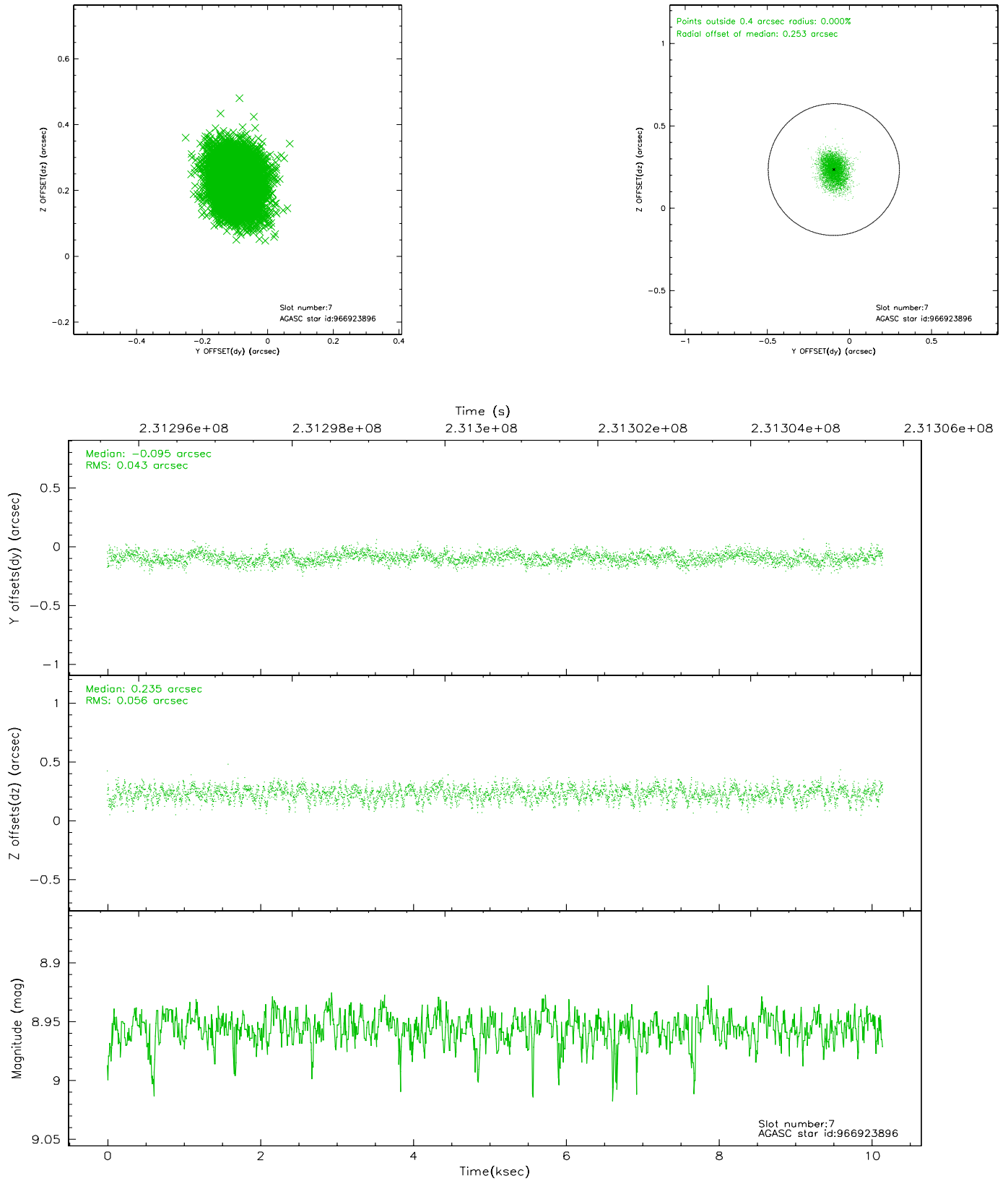
2.4.3 Slot 5



2.4.4 Slot 6

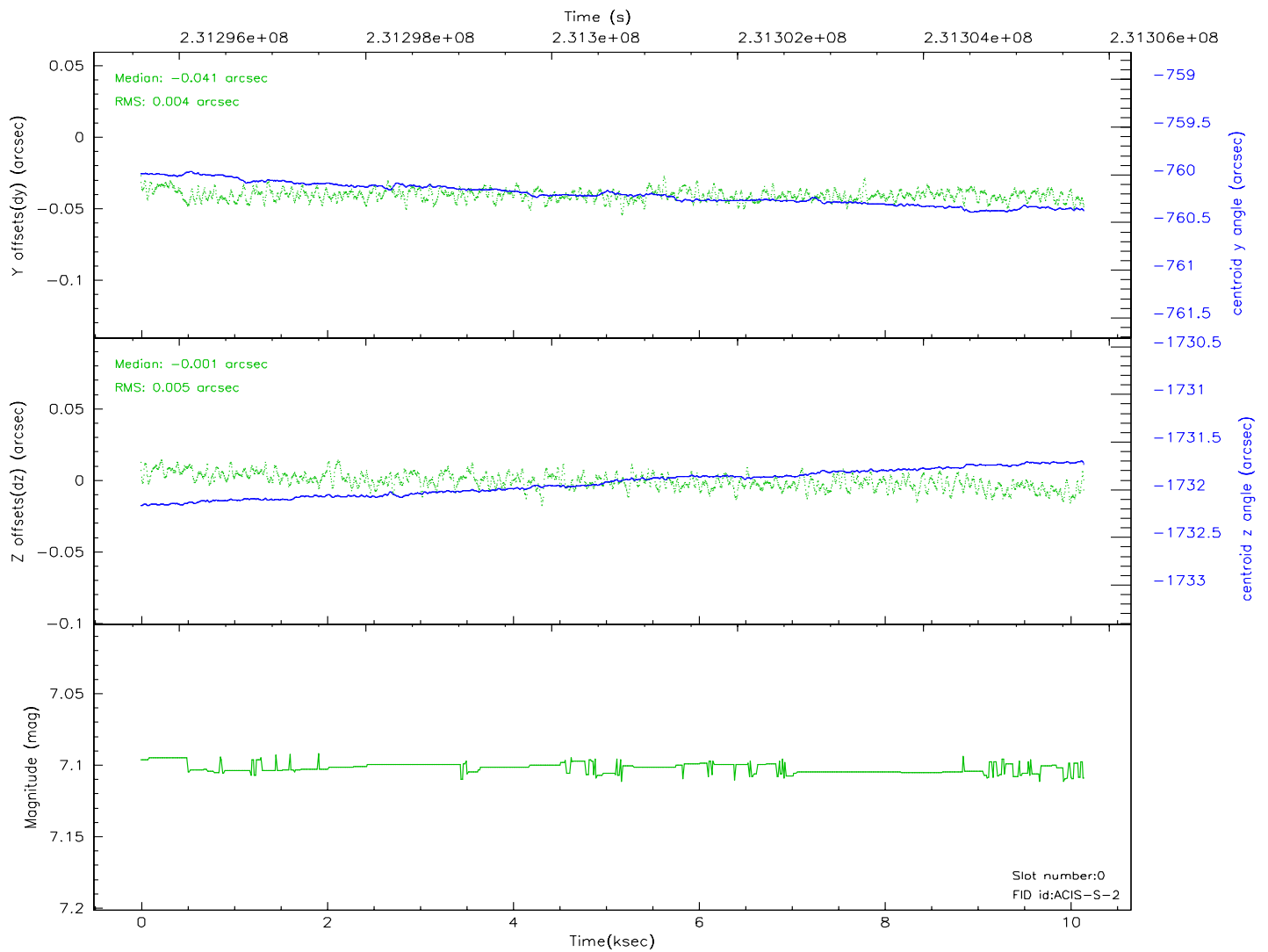
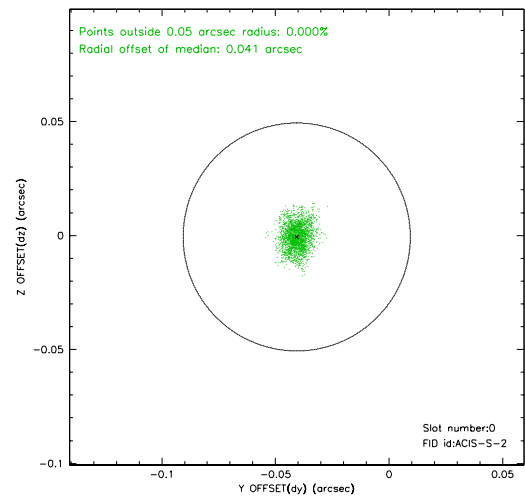
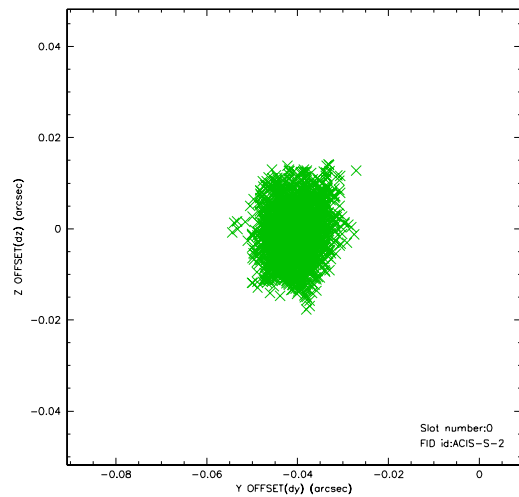


2.4.5 Slot 7

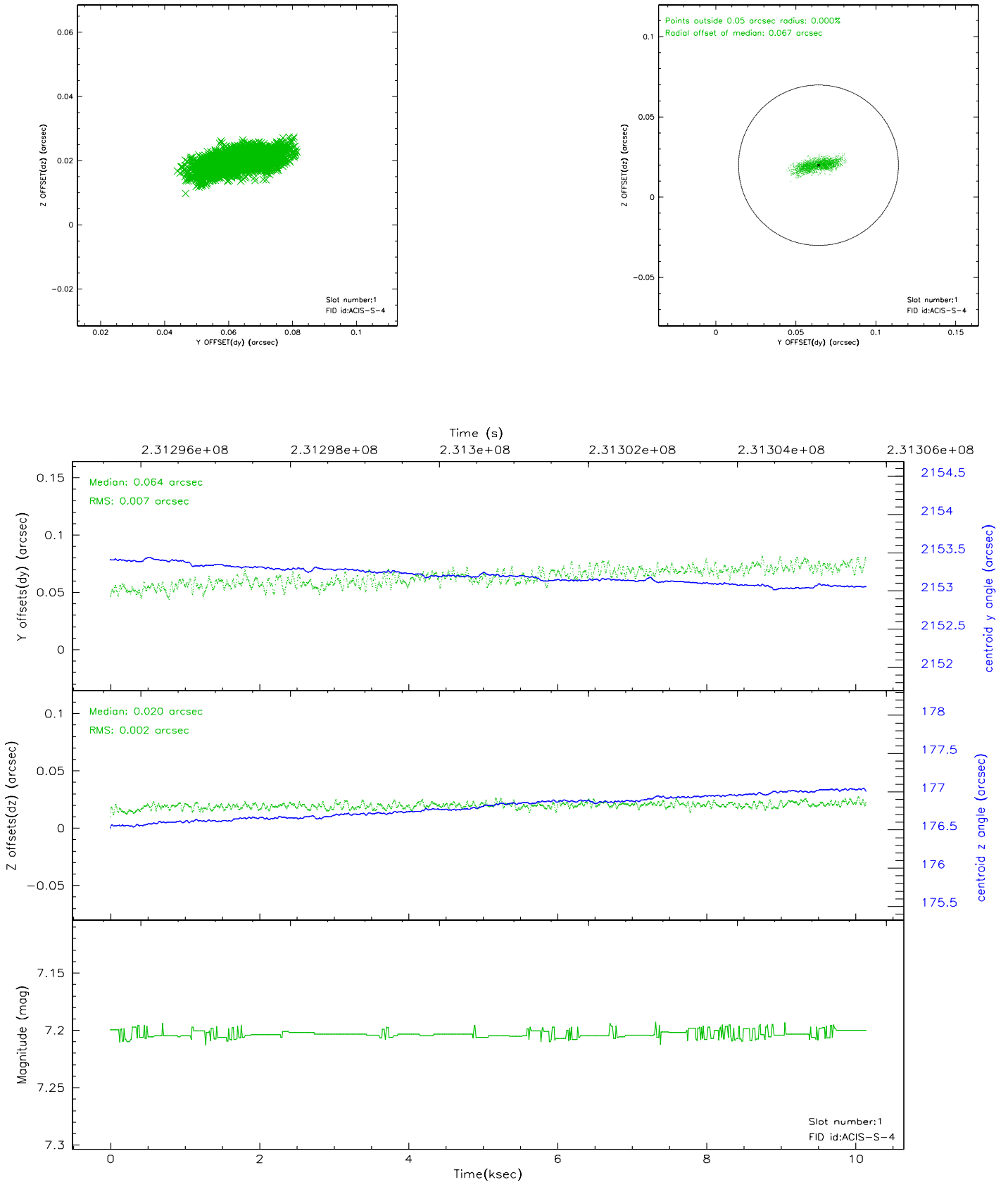


2.5 FID Slots

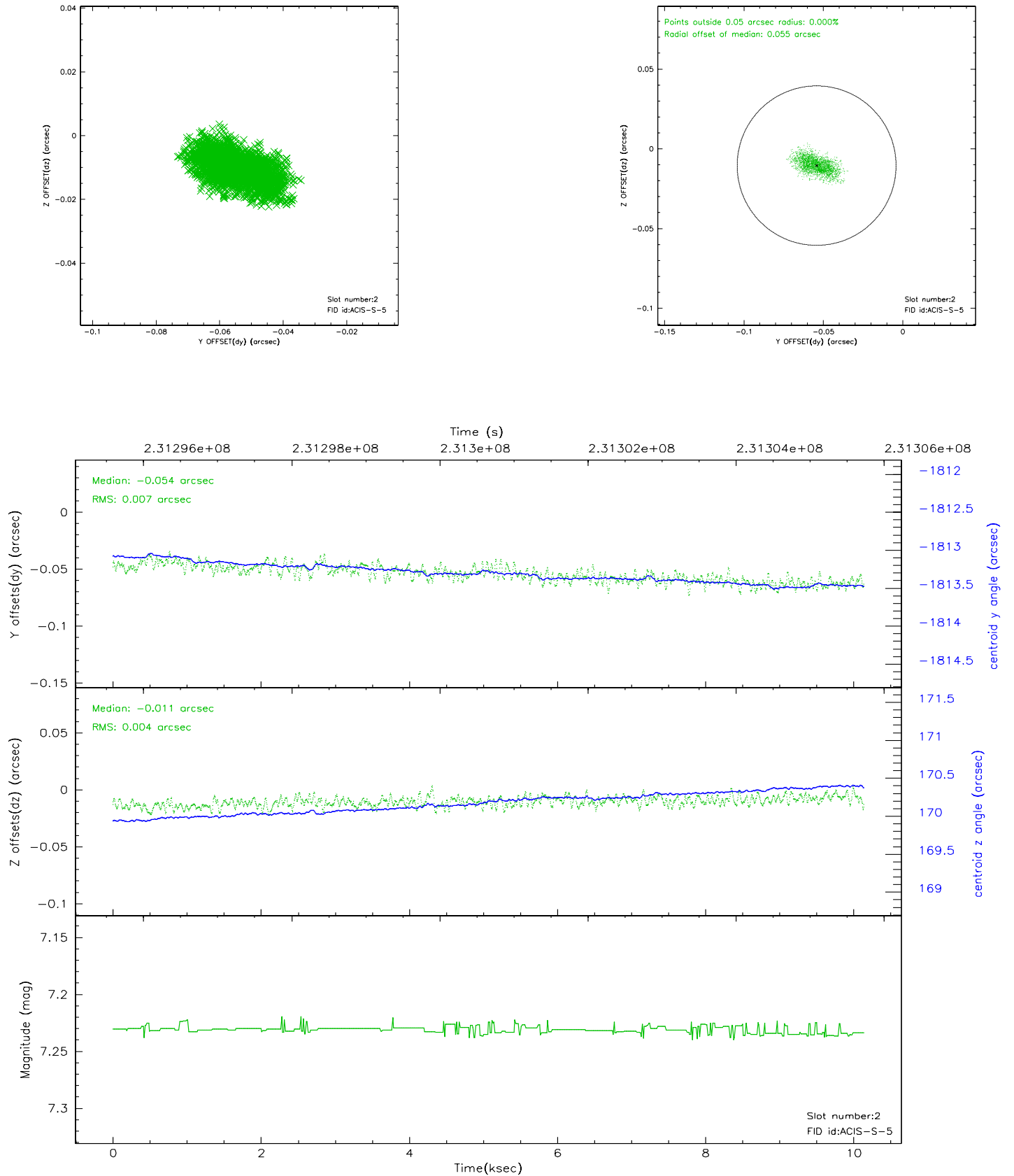
2.5.1 Slot 0



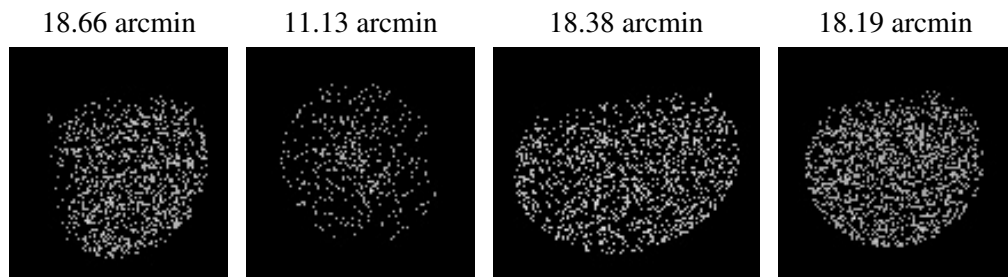
2.5.2 Slot 1



2.5.3 Slot 2



3 Point Sources



A Summary

A.1 Status

V&V Scientist	Beth Sundheim
V&V Date (YYYY-MM-DD)	2006.03.02
V&V Edition	1
V&V Disposition and Status	OK
V&V Charge Time	10.14079

A.2 Comments