

V&V Reference Report

L2 ASCDS Version : 8.1.1

Observation 62320 - L2 Version 6
Chandra X-Ray Center

L2 Processing Date : Dec 17 2010

Contents

1	Front	2
2	OBI	3
2.1	OBI	3
2.1.1	Images	3
2.1.2	Bias	3
2.1.3	Parameters	4
2.1.4	Events	4
2.2	Compared Parameters	5
2.3	Star Slots	6
2.4	FID Slots	6
A	Summary	7
A.1	Status	7
A.2	Comments	7

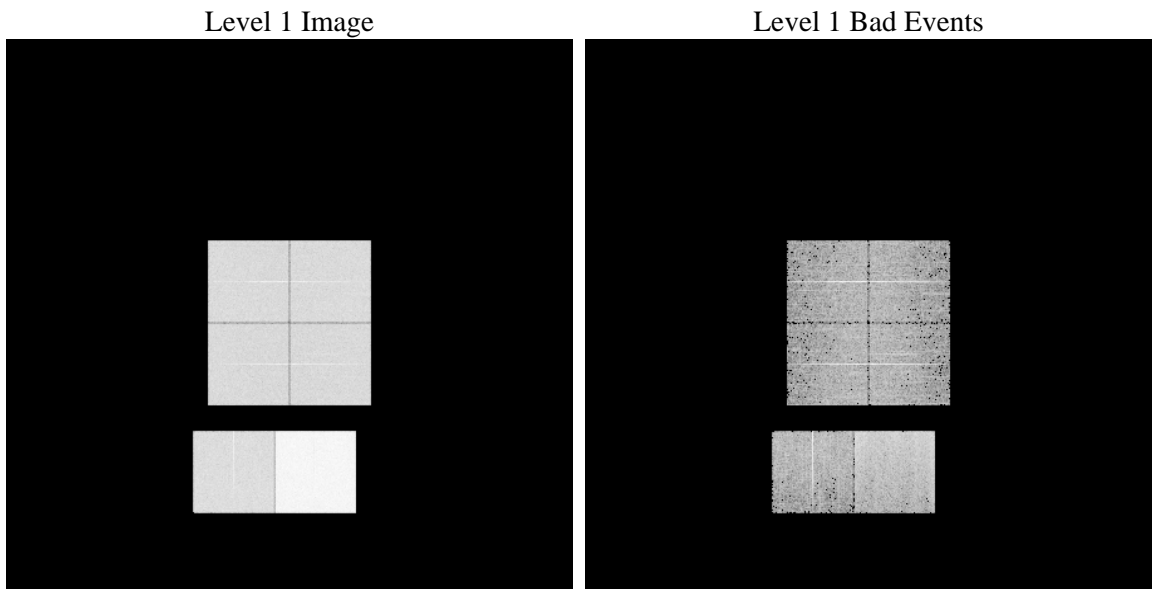
1 Front

seq_num	 	Sequence number
obs_id	62320	Observation id
title	ACIS-012367 diagnostics	Proposal title
observer	CHANDRA engineering request/realtime commanding	Principal investig
object	 	Source name
dtcycle	0	
cycle	P	events from which exps? Prim/Second/Both
ra_targ	0.0	Observer's specified target RA
dec_targ	0.0	Observer's specified target Dec
ra_nom	153.3952431035	Nominal RA
dec_nom	49.398799216845	Nominal Dec
roll_nom	64.321947411041	Nominal Roll
revision	6	Processing version of data
ontime	4953.0095983222	Sum of GTIs [s]
livetime	4890.2916084439	Livetime [s]
ontime0	1907.7440836057	Sum of GTIs [s]
ontime1	1930.472403653	Sum of GTIs [s]
ontime2	1839.764323473	Sum of GTIs [s]
ontime3	1829.8770135194	Sum of GTIs [s]
ontime6	2073.1602439284	Sum of GTIs [s]
ontime7	4953.0095983222	Sum of GTIs [s]
l2events	1311051	Number of level 2 events

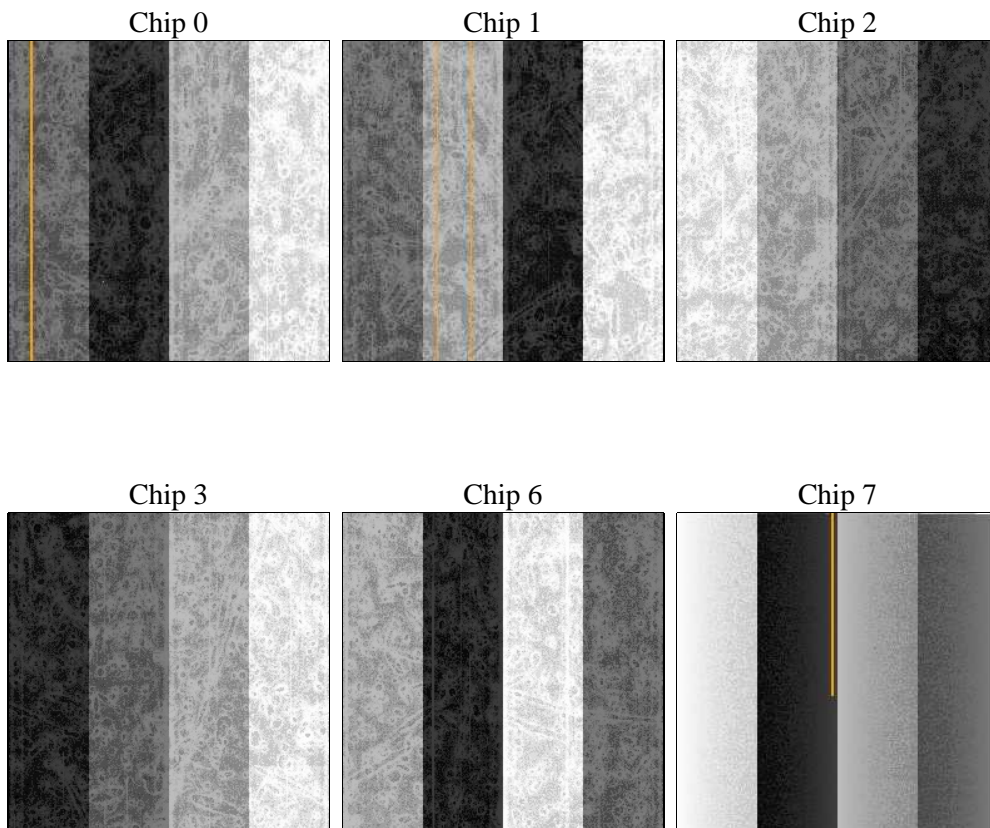
2 OBI

2.1 OBI

2.1.1 Images



2.1.2 Bias



2.1.3 Parameters

obi_num	0	Obi number	sched_exp_time	0.0	Scheduled observation exposure time
ascdsver	8.3.2.1	ASCDS version number	ontime	4953.0095983222	Sum of GTIs [s]
caldsver	4.3.1	 	ontime0	1907.7440836057	Sum of GTIs [s]
date	2010-10-20T11:19:22	Date and time of file creation	ontime1	1930.472403653	Sum of GTIs [s]
revision	3	Processing version of data	ontime2	1839.764323473	Sum of GTIs [s]
			ontime3	1829.8770135194	Sum of GTIs [s]
			ontime6	2073.1602439284	Sum of GTIs [s]
			ontime7	4953.0095983222	Sum of GTIs [s]
			l1events	1516229	Number of level 1 events

2.1.4 Events

	ccd 0	ccd 1	ccd 2	ccd 3	ccd 6	ccd 7		ccd 0	ccd 1	ccd 2	ccd 3	ccd 6	ccd 7
level 1 events	196286	197598	190281	190306	219478	522280	grade 0 events	63663	63576	51819	53906	53105	86225
rejected events	26938	26897	27927	28284	31424	50237		32%	32%	27%	28%	24%	16%
rejected %	13%	13%	14%	14%	14%	9%	grade 1 events	288	253	237	235	208	240
								0%	0%	0%	0%	0%	0%
							grade 2 events	62913	63652	70587	68703	87165	131965
								32%	32%	37%	36%	39%	25%
							grade 3 events	6786	6922	5476	5546	5402	41072
								3%	3%	2%	2%	2%	7%
							grade 4 events	6565	6712	5286	5631	5459	36893
								3%	3%	2%	2%	2%	7%
							grade 5 events	1681	1708	1669	1654	1812	7348
								0%	0%	0%	0%	0%	1%
							grade 6 events	29421	29839	29186	28236	36923	175888
								14%	15%	15%	14%	16%	33%
							grade 7 events	24969	24936	26021	26395	29404	42649
								12%	12%	13%	13%	13%	8%

2.2 Compared Parameters

Parameter	Planned	Actual	Parameter	Planned	Actual
Instrument	ACIS	ACIS	Obspar format version number	6	6
Detector	ACIS-012367	ACIS-012367	Obspar file type	PREDICTED	ACTUAL
Grating	NONE	NONE	Obspar update status	NONE	UPDATED
Data mode	FAINT	FAINT	On-chip summing requested	N	N
Observation mode	SECONDARY	SECONDARY	Subarray requested	NONE	NONE
Pointing RA	0	153.3952431035025	Alternating exposures requested	N	N
Pointing Dec	0	49.39879921684518	Primary exposure time	3.2	3.2
Pointing Roll	0.0	64.32194741104121			
SIM focus pos (mm)	-0.782348	-1.428180813131781			
SIM defocus (mm)	0	0.1051558262725154			
SIM translation stage pos (mm)	-233.592463	250.466033080201			
SIM translation stage offset (mm)	0	-0.01005468664627074			
Observation start time	58473500.012507	58473499.244029			
Observation start date	1999-11-08T18:38:20	1999-11-08T18:38:19			
Observation end time	58521221.964229	58521221.195752			
Observation end date	1999-11-09T07:53:42	1999-11-09T07:53:41			
Read mode	TIMED	TIMED			

2.3 Star Slots

2.4 FID Slots

A Summary

A.1 Status

V&V Scientist	Joy Nichols
V&V Date (YYYY-MM-DD)	2011.01.14
V&V Edition	1
V&V Disposition and Status	OK
V&V Charge Time	4.9530095983222

A.2 Comments