

# V&V Reference Report

## L2 ASCDS Version : 8.4.5

Observation 62160 - L2 Version 4  
Chandra X-Ray Center

L2 Processing Date : Aug 23 2012

## Contents

<b>1</b>	<b>Front</b>	<b>2</b>
<b>2</b>	<b>OBI</b>	<b>3</b>
2.1	OBI . . . . .	3
2.1.1	Images . . . . .	3
2.1.2	Bias . . . . .	3
2.1.3	Parameters . . . . .	4
2.1.4	Events . . . . .	4
2.2	Compared Parameters . . . . .	5
2.3	Star Slots . . . . .	6
2.4	FID Slots . . . . .	6
<b>A</b>	<b>Summary</b>	<b>7</b>
A.1	Status . . . . .	7
A.2	Comments . . . . .	7

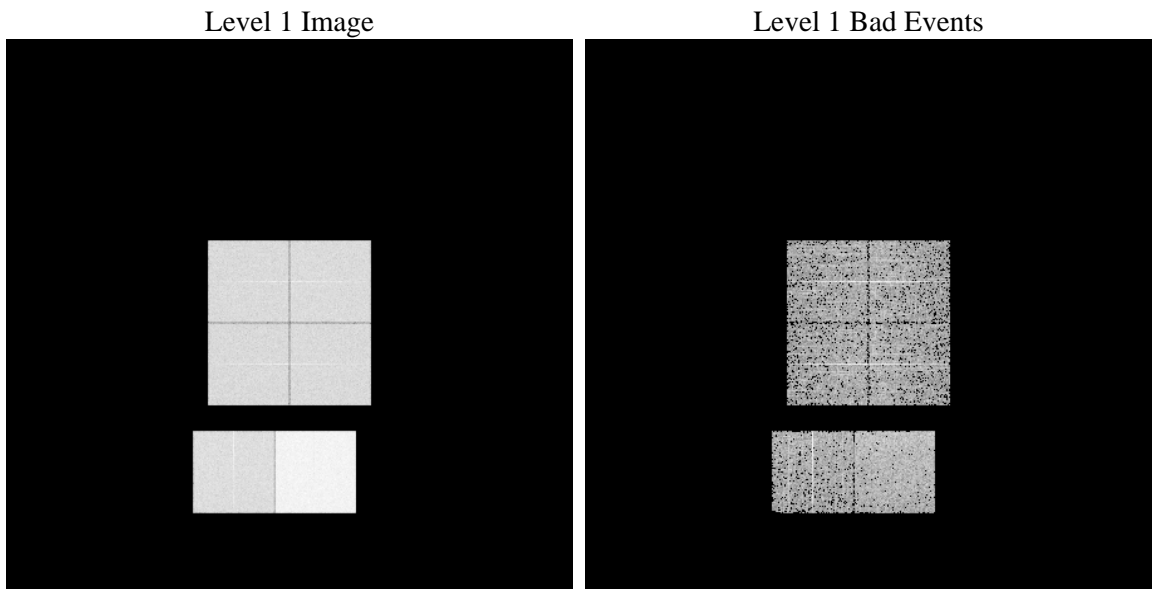
# 1 Front

seq_num	&#160	Sequence number
obs_id	62160	Observation id
title	ACIS-012367 diagnostics	Proposal title
observer	CHANDRA engineering request/realtime commanding	Principal investig
object	&#160	Source name
dtcycle	0	&#160
cycle	P	events from which exps? Prim/Second/Both
ra_targ	0.0	Observer's specified target RA [deg]
dec_targ	0.0	Observer's specified target Dec [deg]
ra_nom	119.98931499761	Nominal RA [deg]
dec_nom	54.97195841519	Nominal Dec [deg]
roll_nom	225.60645635225	Nominal Roll [deg]
revision	4	Processing version of data
ontime	3487.0131325126	Sum of GTIs [s]
livetime	3442.8584726015	Livetime [s]
ontime0	1445.5023504794	Sum of GTIs [s]
ontime1	1480.7455529273	Sum of GTIs [s]
ontime2	1383.4733430892	Sum of GTIs [s]
ontime3	1416.0477734059	Sum of GTIs [s]
ontime6	1565.420640707	Sum of GTIs [s]
ontime7	3487.0131325126	Sum of GTIs [s]
l2events	930855	Number of level 2 events

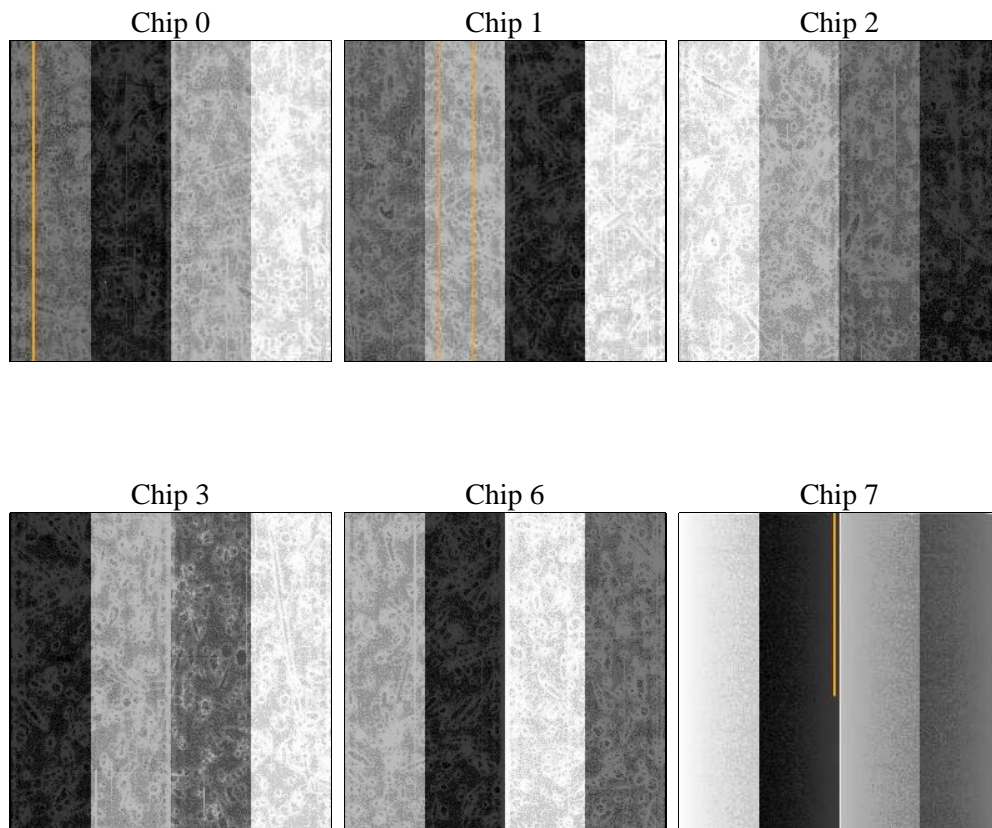
## 2 OBI

### 2.1 OBI

#### 2.1.1 Images



#### 2.1.2 Bias



### 2.1.3 Parameters

obi_num	1	Obi number	sched_exp_time	0.0	[s] Scheduled observation exposure time
ascdsver	8.4.5	Processing system revision	ontime	3487.0131325126	Sum of GTIs [s]
caldsver	4.5.1.1	&#160	ontime0	1445.5023504794	Sum of GTIs [s]
date	2012-08-23T14:04:50	Date and time of file creation	ontime1	1480.7455529273	Sum of GTIs [s]
revision	4	Processing version of data	ontime2	1383.4733430892	Sum of GTIs [s]
			ontime3	1416.0477734059	Sum of GTIs [s]
			ontime6	1565.420640707	Sum of GTIs [s]
			ontime7	3487.0131325126	Sum of GTIs [s]
			l1events	1062172	Number of level 1 events

### 2.1.4 Events

	ccd 0	ccd 1	ccd 2	ccd 3	ccd 6	ccd 7		ccd 0	ccd 1	ccd 2	ccd 3	ccd 6	ccd 7
level 1 events	140384	144302	137811	140515	159624	339536	grade 0 events	70014	71790	68907	70579	78377	82496
rejected events	13876	14285	14397	14504	15464	19914		49%	49%	50%	50%	49%	24%
rejected %	9%	9%	10%	10%	9%	5%	grade 1 events	430	460	434	412	450	248
								0%	0%	0%	0%	0%	0%
							grade 2 events	22068	22698	21585	21910	24983	71091
								15%	15%	15%	15%	15%	20%
							grade 3 events	7941	8286	7800	8080	8994	32758
								5%	5%	5%	5%	5%	9%
							grade 4 events	7991	8263	7688	8050	8888	32578
								5%	5%	5%	5%	5%	9%
							grade 5 events	1055	1038	977	1034	1148	4533
								0%	0%	0%	0%	0%	1%
							grade 6 events	18494	18980	17434	17392	22918	100699
								13%	13%	12%	12%	14%	29%
							grade 7 events	12391	12787	12986	13058	13866	15133
								8%	8%	9%	9%	8%	4%

## 2.2 Compared Parameters

Parameter	Planned	Actual
Instrument	ACIS	ACIS
Detector	ACIS-012367	ACIS-012367
Grating	NONE	NONE
Data mode	FAINT	FAINT
Observation mode	SECONDARY	SECONDARY
[deg] Pointing RA	0	119.9893149976051
[deg] Pointing Dec	0	54.97195841518995
[deg] Pointing Roll	0.0	225.6064563522492
[mm] SIM focus pos	-0.782348	-0.6828225247311905
[mm] SIM defocus	0	0.8505141146731063
[mm] SIM translation stage pos	-233.592463	250.466033080201
[mm] SIM translation stage offset	0	-0.01005468664627074
[s] Observation start time (MET)	67607703.847737	67607703.079271
Observation start date	2000-02-22T11:55:04	2000-02-22T11:55:03
[s] Observation end time (MET)	67616549.59806	67616548.829593
Observation end date	2000-02-22T14:22:30	2000-02-22T14:22:28
Read mode	TIMED	TIMED

Parameter	Planned	Actual
Obspar format version number	7	7
Obspar file type	PREDICTED	ACTUAL
Obspar update status	NONE	UPDATED
On-chip summing requested	N	N
Subarray requested	NONE	NONE
Alternating exposures requested	N	N
[s] Primary exposure time	3.2	3.2

## **2.3 Star Slots**

## **2.4 FID Slots**

## A Summary

### A.1 Status

V&V Scientist	Jen Lauer
V&V Date (YYYY-MM-DD)	2012.08.23
V&V Edition	1
V&V Disposition and Status	OK
V&V Charge Time	3.4870131325126

### A.2 Comments