

V&V Reference Report

L2 ASCDS Version : 8.4.5

Observation 620 - L2 Version 4
Chandra X-Ray Center

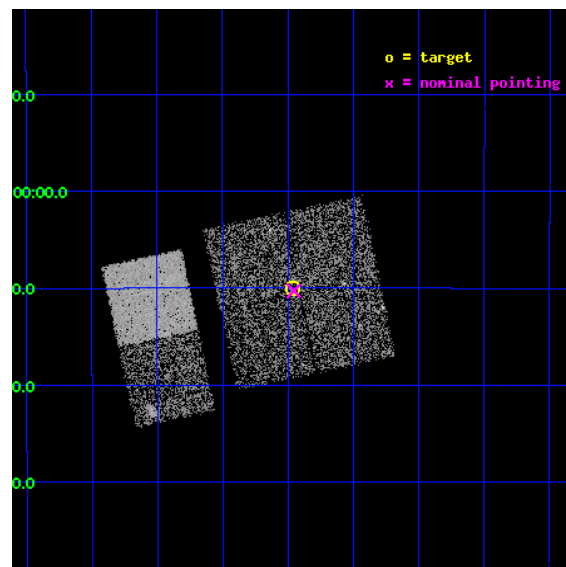
L2 Processing Date : Aug 30 2012

Contents

1	Front	2
2	OBI	3
2.1	OBI	3
2.1.1	Images	3
2.1.2	Bias	3
2.1.3	Parameters	4
2.1.4	Events	4
2.2	Compared Parameters	5
2.3	Aspect	6
2.4	Star Slots	9
2.4.1	Slot 3	9
2.4.2	Slot 4	10
2.4.3	Slot 5	11
2.4.4	Slot 6	12
2.4.5	Slot 7	13
2.5	FID Slots	14
2.5.1	Slot 0	14
2.5.2	Slot 1	15
2.5.3	Slot 2	16
A	Summary	17
A.1	Status	17
A.2	Comments	17

1 Front

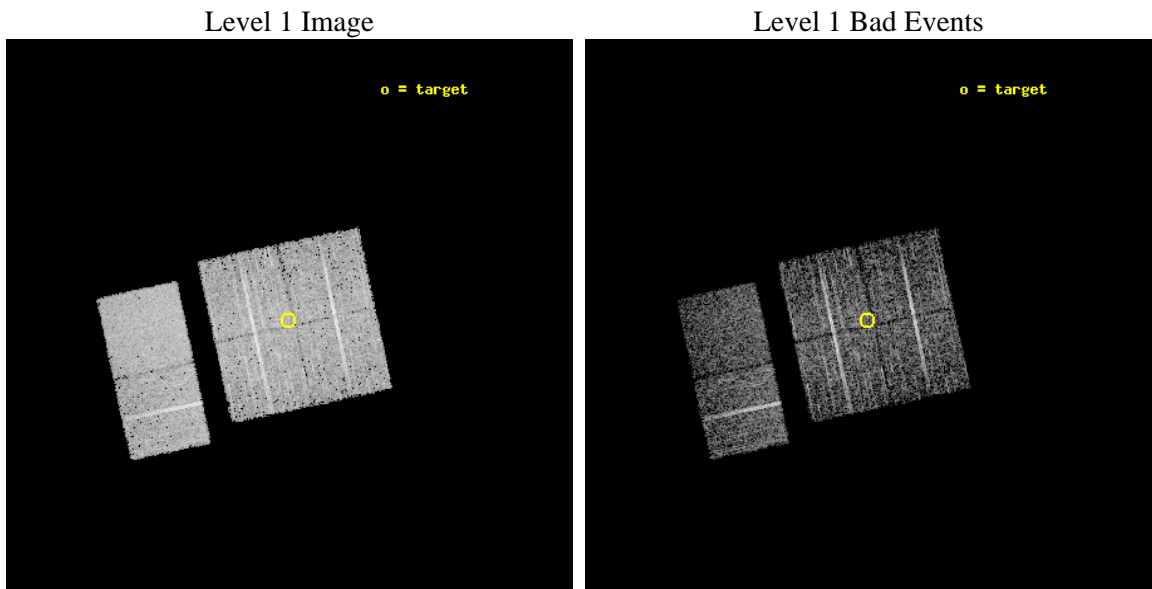
seq_num	200045	Sequence number
obs_id	620	Observation id
title	X-RAYS FROM THE RHO OPHIUCHI YOUNG STAR CLUSTER	Proposal title
observer	Dr. Thierry Montmerle	Principal investigator
object	OPHIUCHI MOSAIC #8	Source name
dtcycle	0	
cycle	P	events from which exps? Prim/Second/Both
ra_targ	246.866667	Observer's specified target RA [deg]
dec_targ	-24.1675	Observer's specified target Dec [deg]
ra_nom	246.86359933932	Nominal RA [deg]
dec_nom	-24.17151951354	Nominal Dec [deg]
roll_nom	257.9547172211	Nominal Roll [deg]
revision	4	Processing version of data
ontime	4480.0000041574	Sum of GTIs [s]
livetime	4423.2715465726	Livetime [s]
ontime0	4480.0000041574	Sum of GTIs [s]
ontime1	4480.0000041574	Sum of GTIs [s]
ontime2	4480.0000041574	Sum of GTIs [s]
ontime3	4480.0000041574	Sum of GTIs [s]
ontime6	4480.0000041574	Sum of GTIs [s]
ontime7	4480.0000041574	Sum of GTIs [s]
l2events	28271	Number of level 2 events



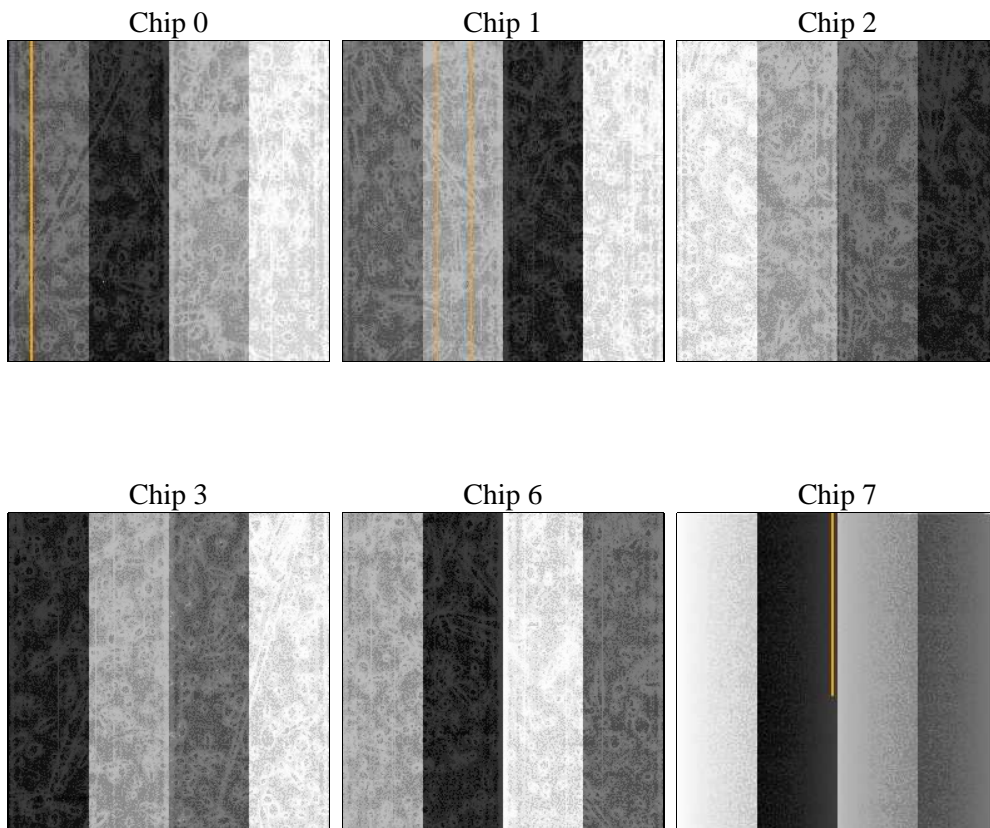
2 OBI

2.1 OBI

2.1.1 Images



2.1.2 Bias



2.1.3 Parameters

obi_num	0	Obi number	sched_exp_time	4725.000000	[s] Scheduled observation exposure time
ascdsver	8.4.5	Processing system revision	ontime	4480.0000041574	Sum of GTIs [s]
caldsver	4.5.1.1	 	ontime0	4480.0000041574	Sum of GTIs [s]
date	2012-08-30T03:35:42	Date and time of file creation	ontime1	4480.0000041574	Sum of GTIs [s]
revision	4	Processing version of data	ontime2	4480.0000041574	Sum of GTIs [s]
			ontime3	4480.0000041574	Sum of GTIs [s]
			ontime6	4480.0000041574	Sum of GTIs [s]
			ontime7	4480.0000041574	Sum of GTIs [s]
			l1events	180948	Number of level 1 events

2.1.4 Events

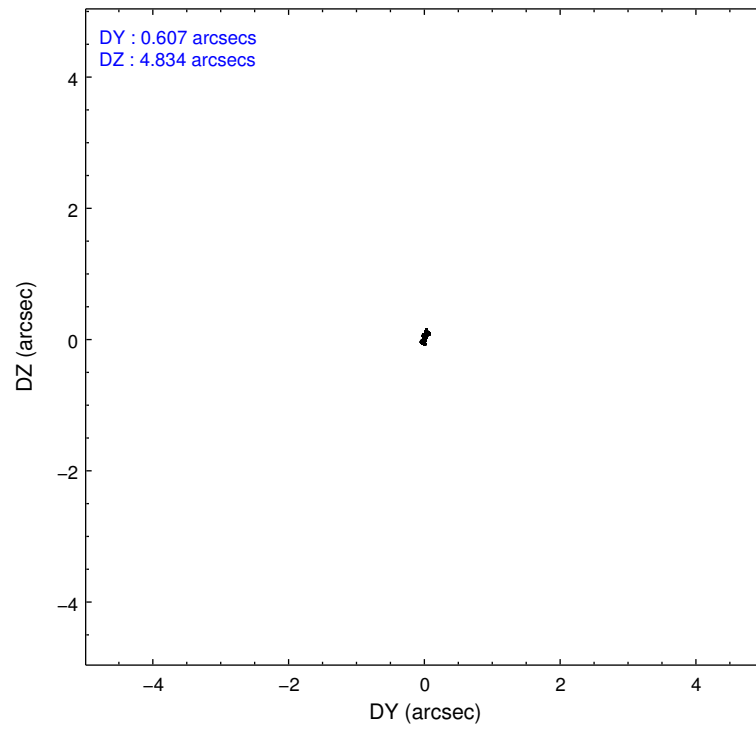
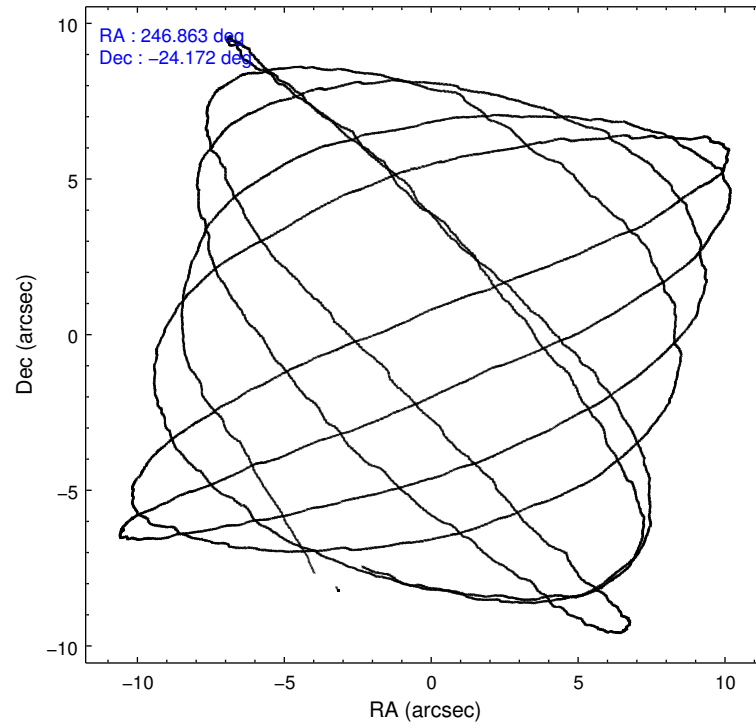
	ccd 0	ccd 1	ccd 2	ccd 3	ccd 6	ccd 7		ccd 0	ccd 1	ccd 2	ccd 3	ccd 6	ccd 7
level 1 events	27540	26974	30388	30469	30760	34817	grade 0 events	1575	1369	1161	1457	1410	1428
rejected events	24065	23642	27545	27226	27421	19964		5%	5%	3%	4%	4%	4%
rejected %	87%	87%	90%	89%	89%	57%	grade 1 events	12	12	13	10	11	43
								0%	0%	0%	0%	0%	0%
							grade 2 events	734	629	646	660	634	2848
								2%	2%	2%	2%	2%	8%
							grade 3 events	311	350	290	309	357	1396
								1%	1%	0%	1%	1%	4%
							grade 4 events	346	376	274	292	327	1347
								1%	1%	0%	0%	1%	3%
							grade 5 events	925	1040	841	1047	1137	3334
								3%	3%	2%	3%	3%	9%
							grade 6 events	512	608	476	526	614	7841
								1%	2%	1%	1%	1%	22%
							grade 7 events	23125	22590	26687	26168	26270	16580
								83%	83%	87%	85%	85%	47%

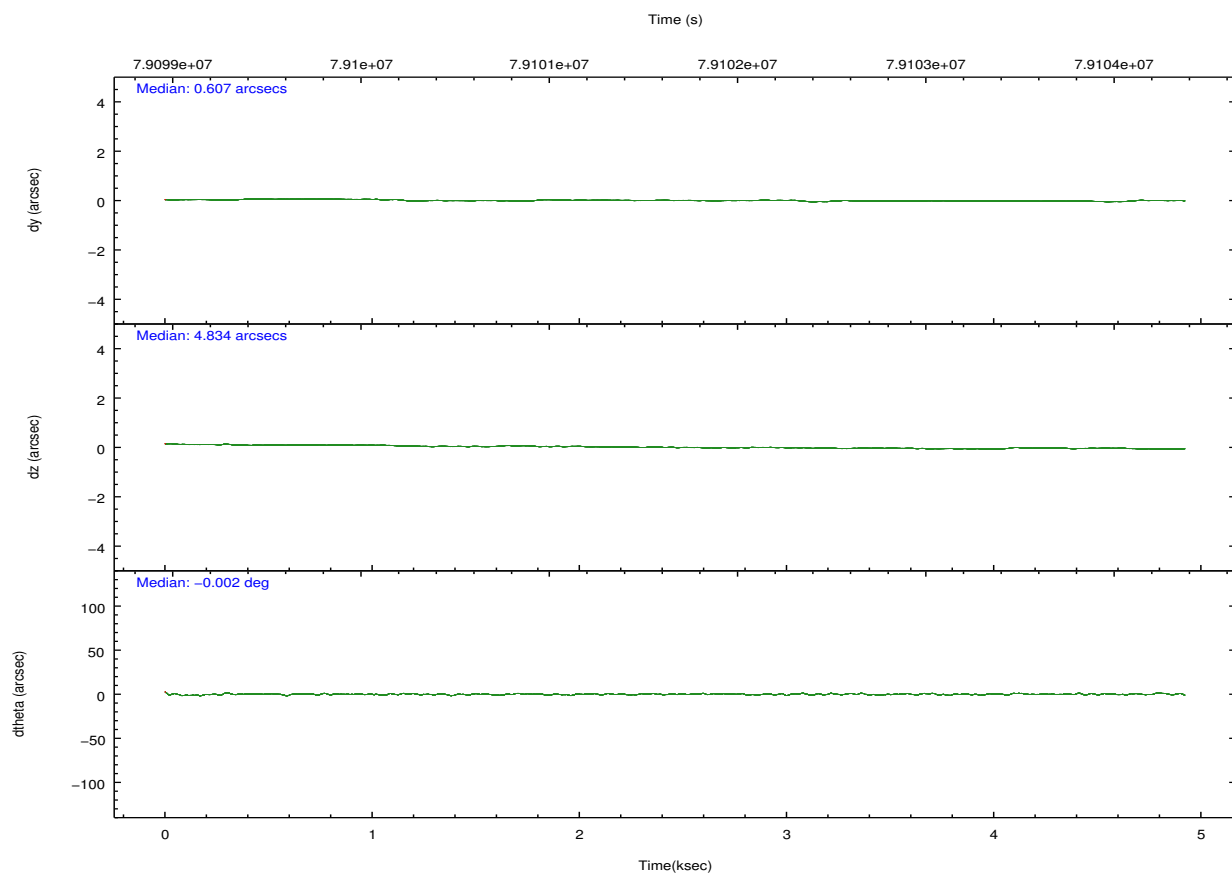
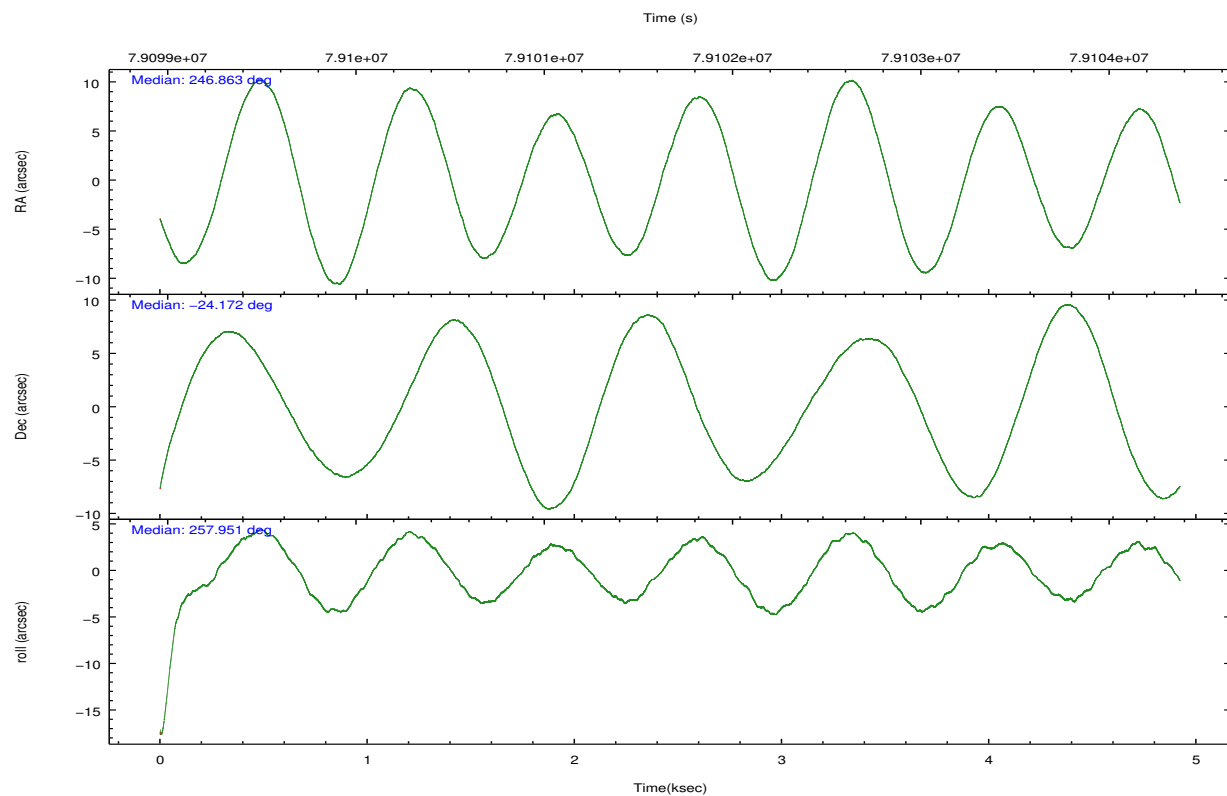
2.2 Compared Parameters

Parameter	Planned	Actual
Instrument	ACIS	ACIS
Detector	ACIS-012367	ACIS-012367
Grating	NONE	NONE
Data mode	FAINT	FAINT
Observation mode	POINTING	POINTING
[deg] Pointing RA	246.854381	246.8635993393209
[deg] Pointing Dec	-24.145279	-24.17151951353954
[deg] Pointing Roll	257.742290	257.9547172210964
[mm] SIM focus pos	-0.782348	-0.7809083437167272
[mm] SIM defocus	0	0.001439871863259334
[mm] SIM translation stage pos	-233.592463	-233.5874344608287
[mm] SIM translation stage offset	0	-0.005018542100998502
[s] Observation start time (MET)	79099407.184000	79098910.33838899
Observation start date	2000-07-04T12:02:23	2000-07-04T11:55:10
[s] Observation end time (MET)	79104132.184000	79104583.201098
Observation end date	2000-07-04T13:21:08	2000-07-04T13:29:43
Read mode	TIMED	TIMED

Parameter	Planned	Actual
Obspar format version number	7	7
Obspar file type	PREDICTED	ACTUAL
Obspar update status	NONE	UPDATED
Number of optional ACIS chips dropped	0	0
On-chip summing requested	N	N
Subarray requested	NONE	NONE
Alternating exposures requested	N	N
[s] Primary exposure time	0.000000	3.2

2.3 Aspect



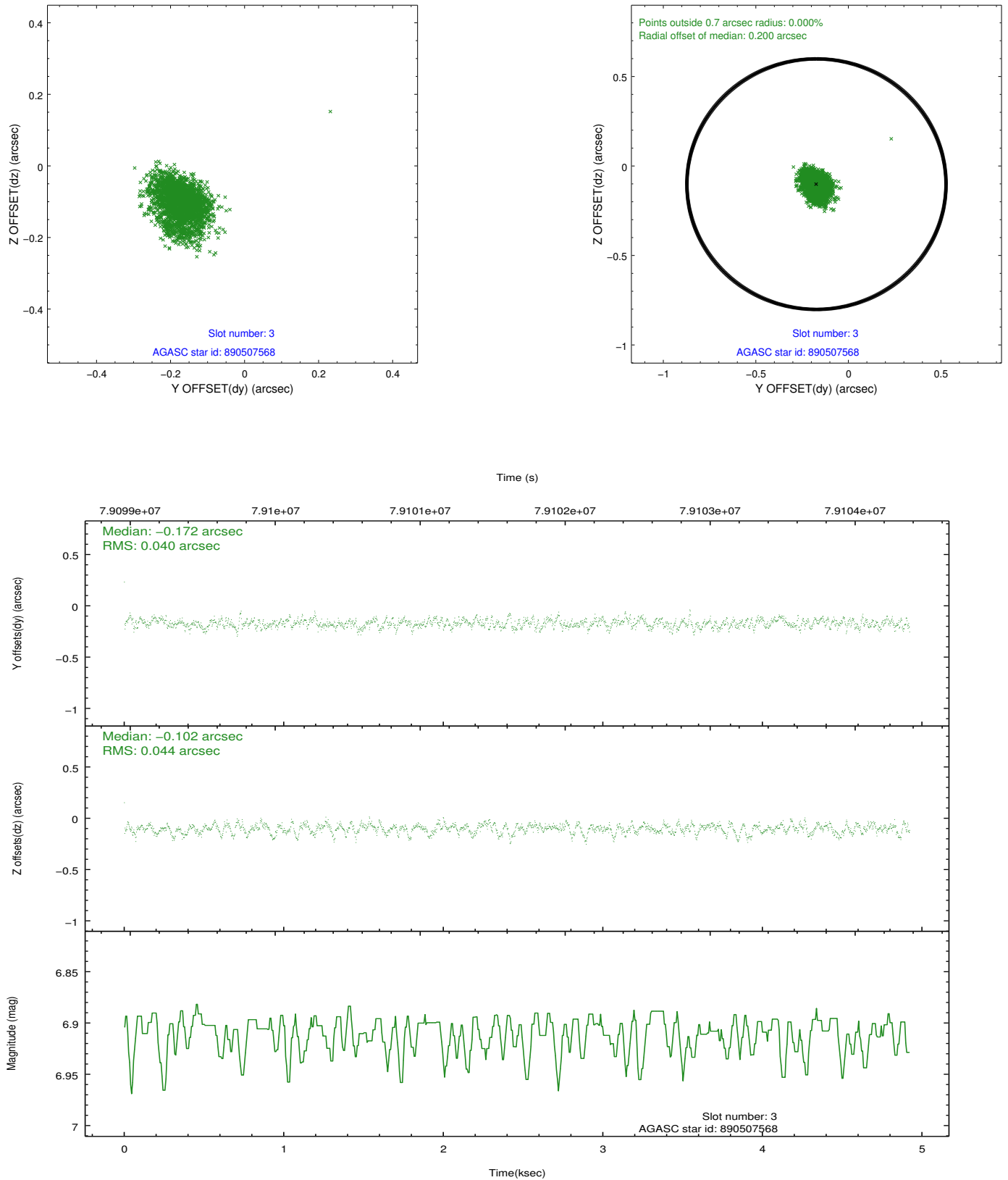


Slot Statistics

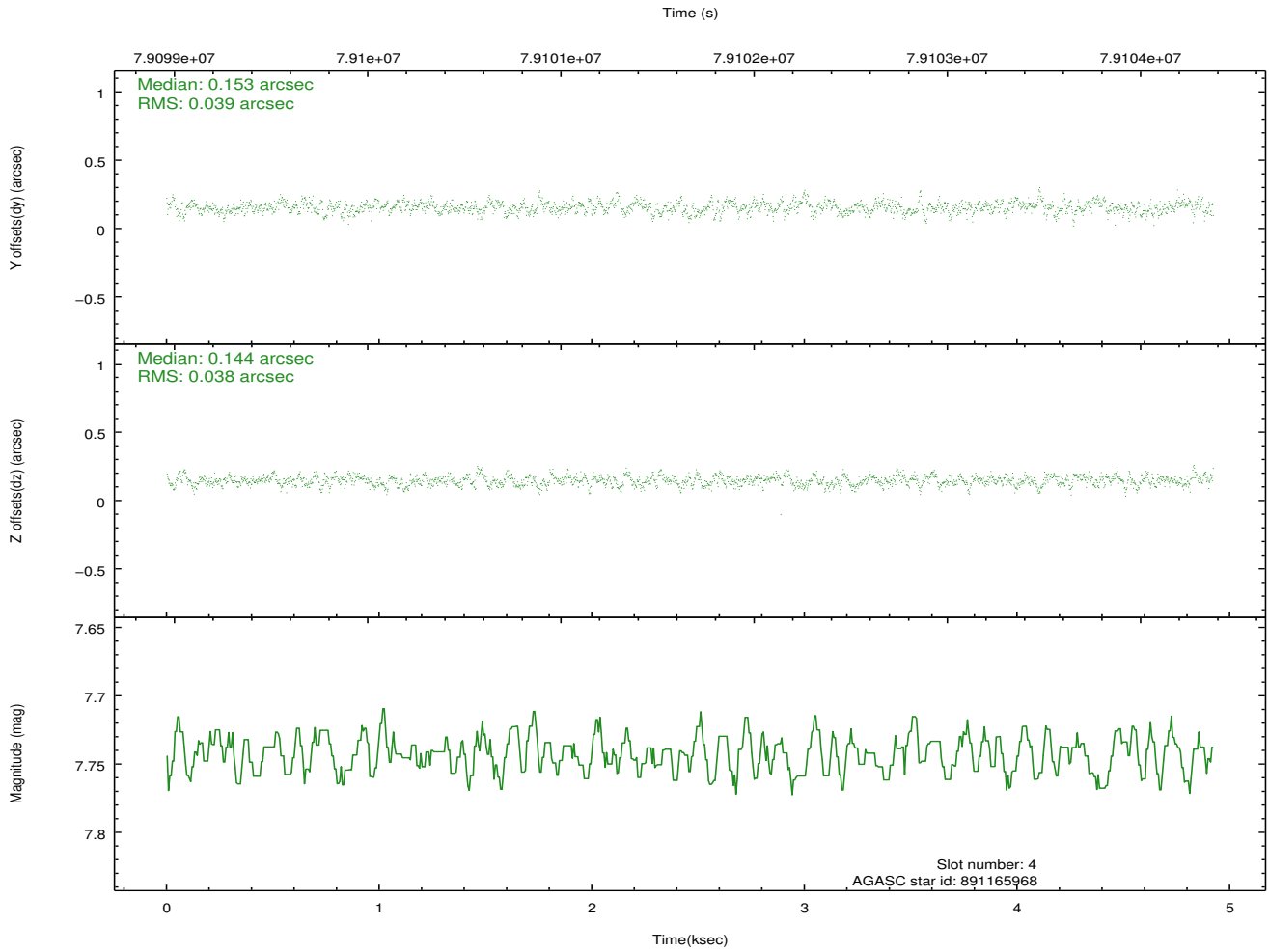
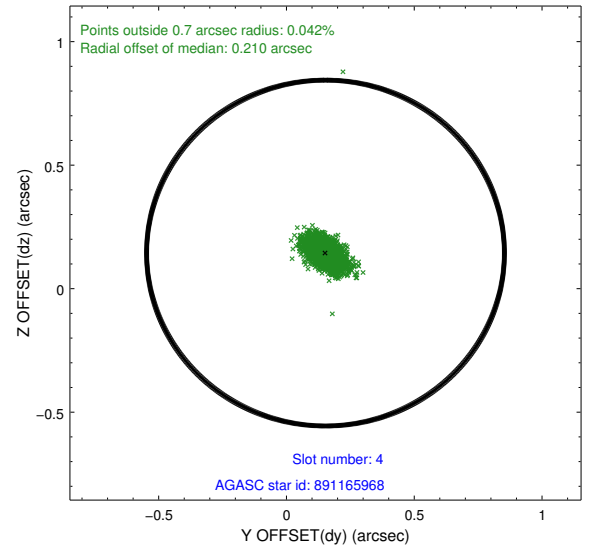
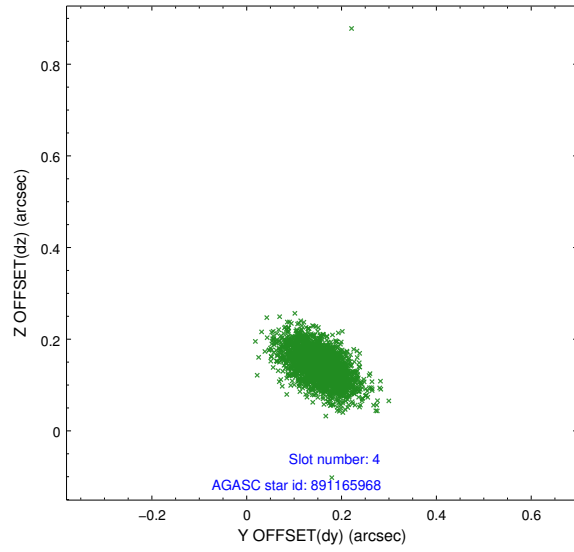
slot	status	id	mag	n_pts	med_dy	med_dz	dr1	dr2	ra	dec	mean_y	mean_z
0	FID	ACIS-I-2	7.15	1201	-0.029	-0.021	0.009	0.015	0.000000	0.000000	-754.95	-834.57
1	FID	ACIS-I-4	7.19	1200	-0.035	0.031	0.006	0.010	0.000000	0.000000	2158.54	1071.04
2	FID	ACIS-I-5	7.23	1200	-0.037	0.059	0.008	0.014	0.000000	0.000000	-1807.19	1070.32
3	GUIDE	890507568	6.91	2402	-0.172	-0.102	0.063	0.101	246.351169	-23.460216	-2055.08	-2146.85
4	GUIDE	891165968	7.74	2402	0.153	0.144	0.055	0.095	247.104842	-24.750274	1953.75	1262.57
5	GUIDE	890507552	7.40	2402	-0.179	-0.124	0.070	0.111	246.396169	-23.405213	-2279.68	-2043.92
6	GUIDE	891165960	7.61	2402	0.078	0.068	0.060	0.096	247.245842	-24.537990	1109.54	1553.01
7	GUIDE	891031768	7.58	2401	0.123	0.022	0.056	0.094	246.351325	-24.465712	1480.13	-1364.11

2.4 Star Slots

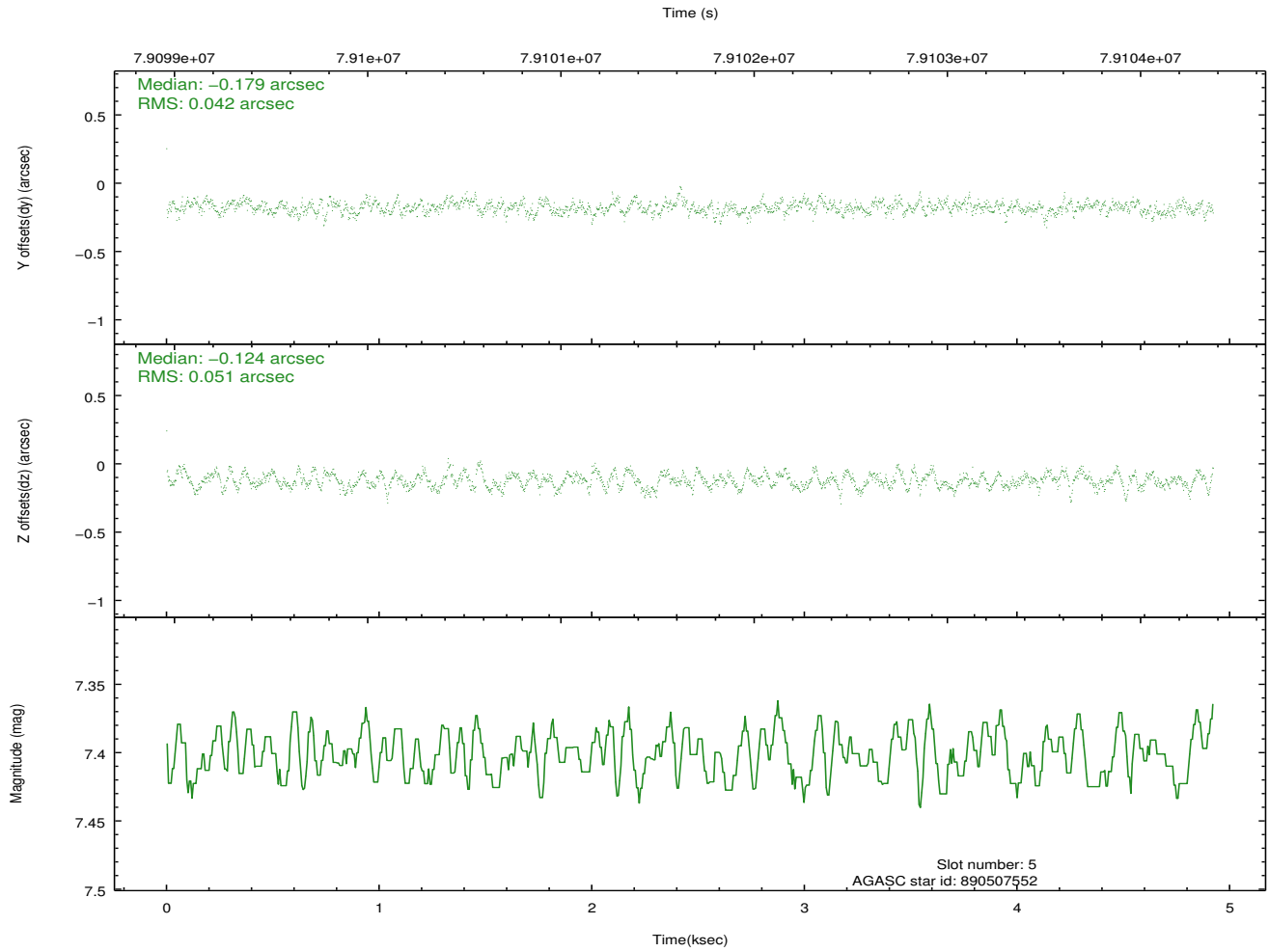
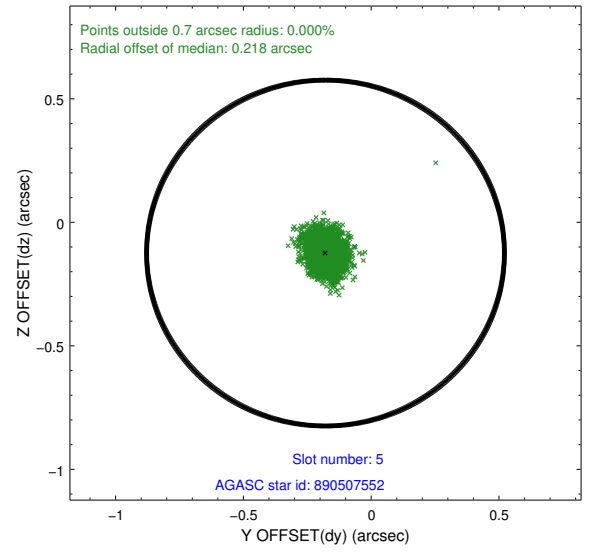
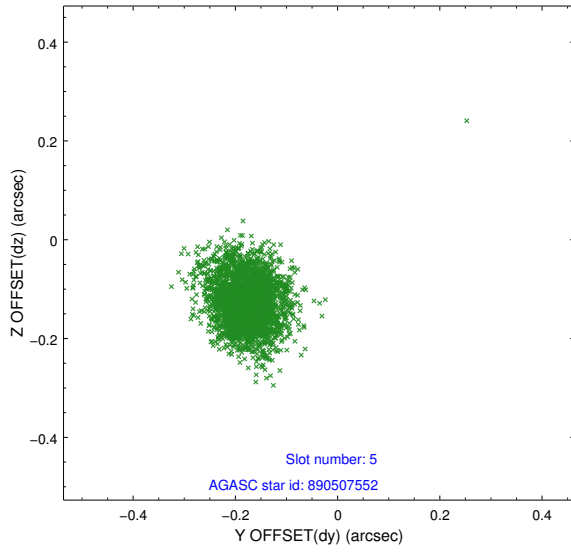
2.4.1 Slot 3



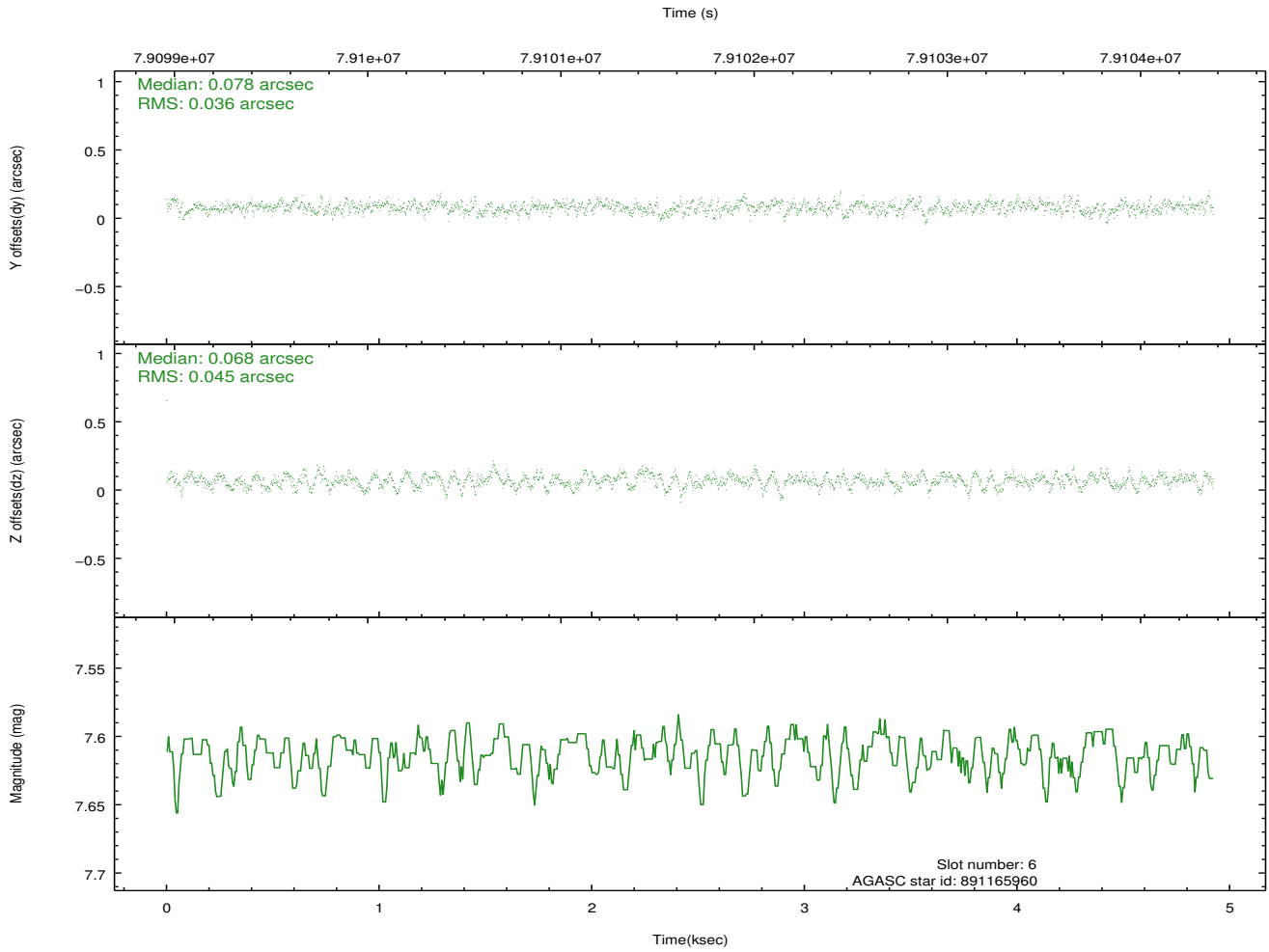
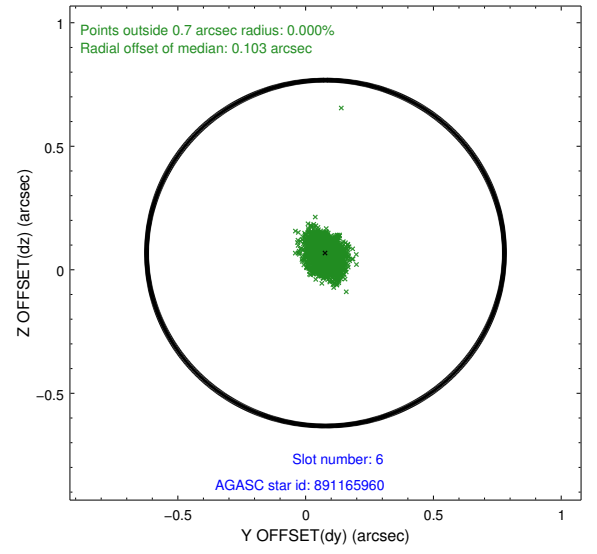
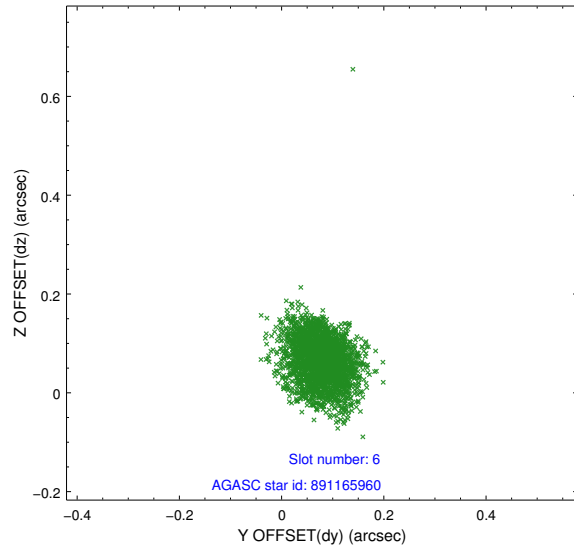
2.4.2 Slot 4



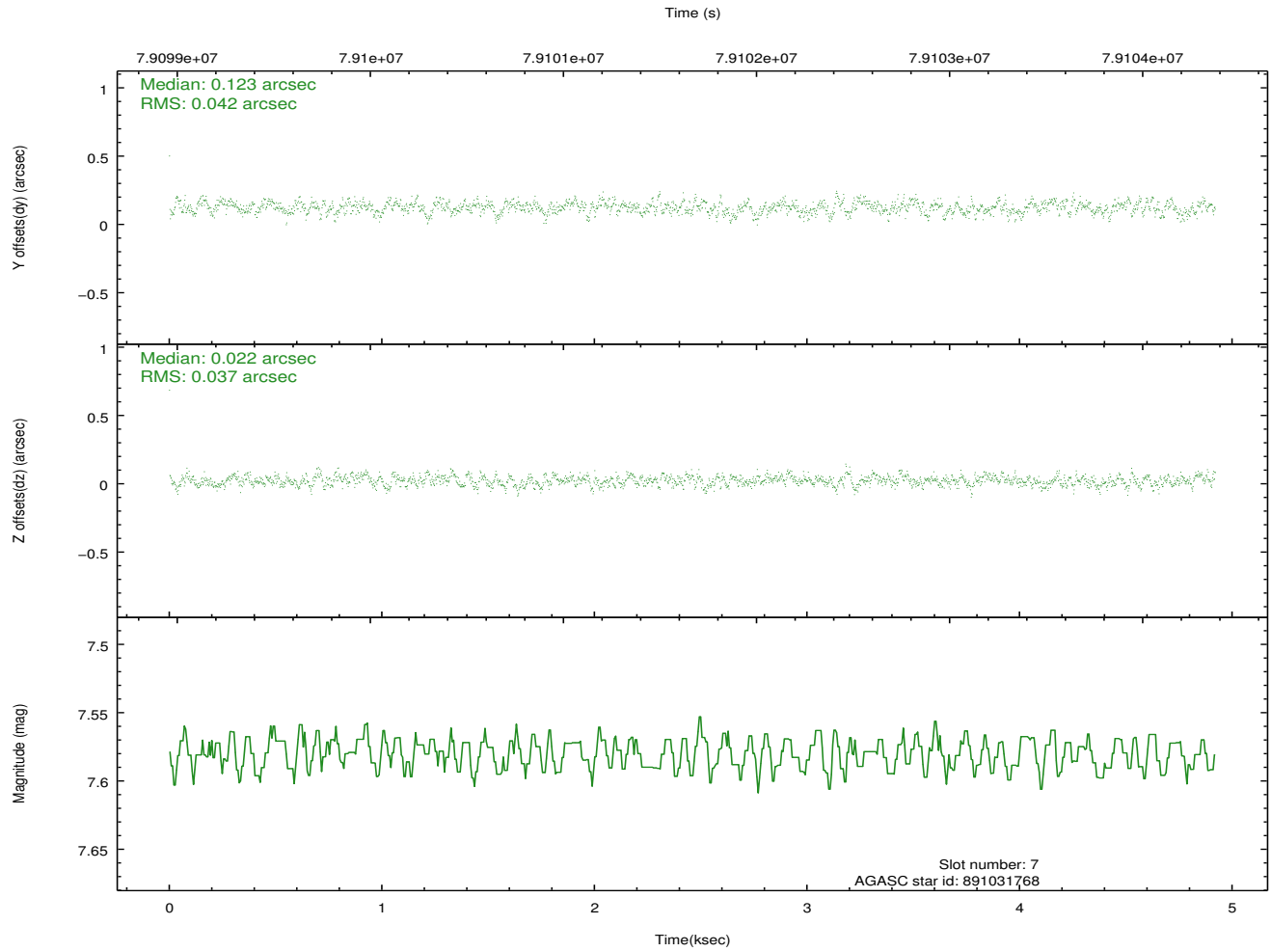
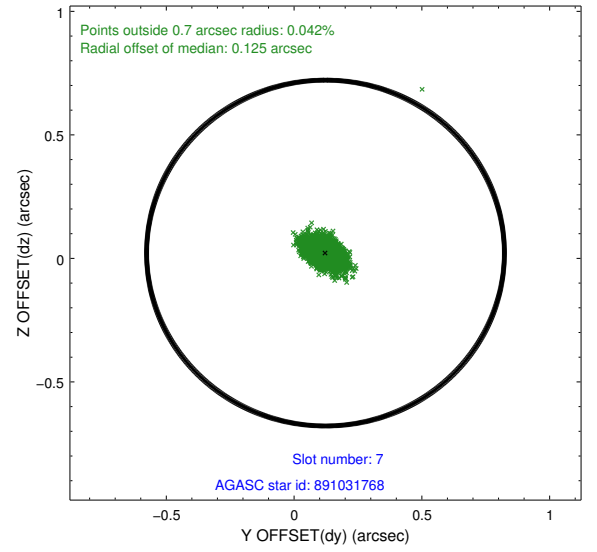
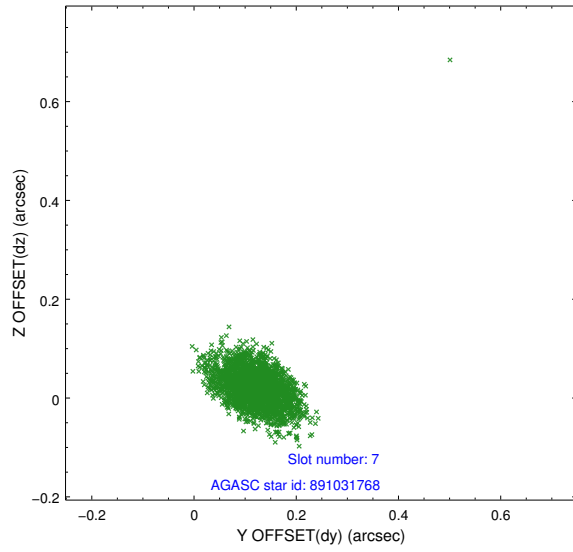
2.4.3 Slot 5



2.4.4 Slot 6

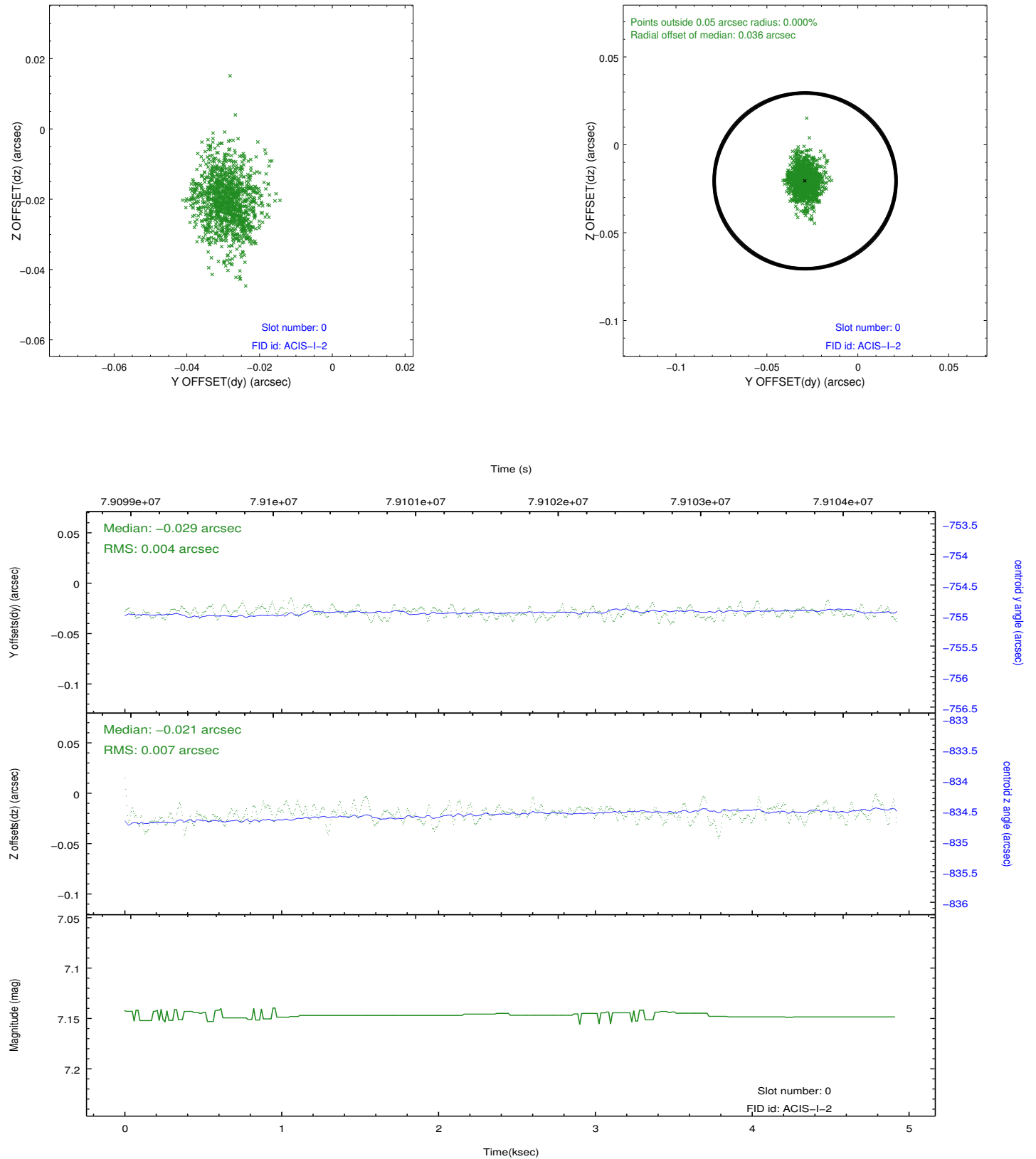


2.4.5 Slot 7

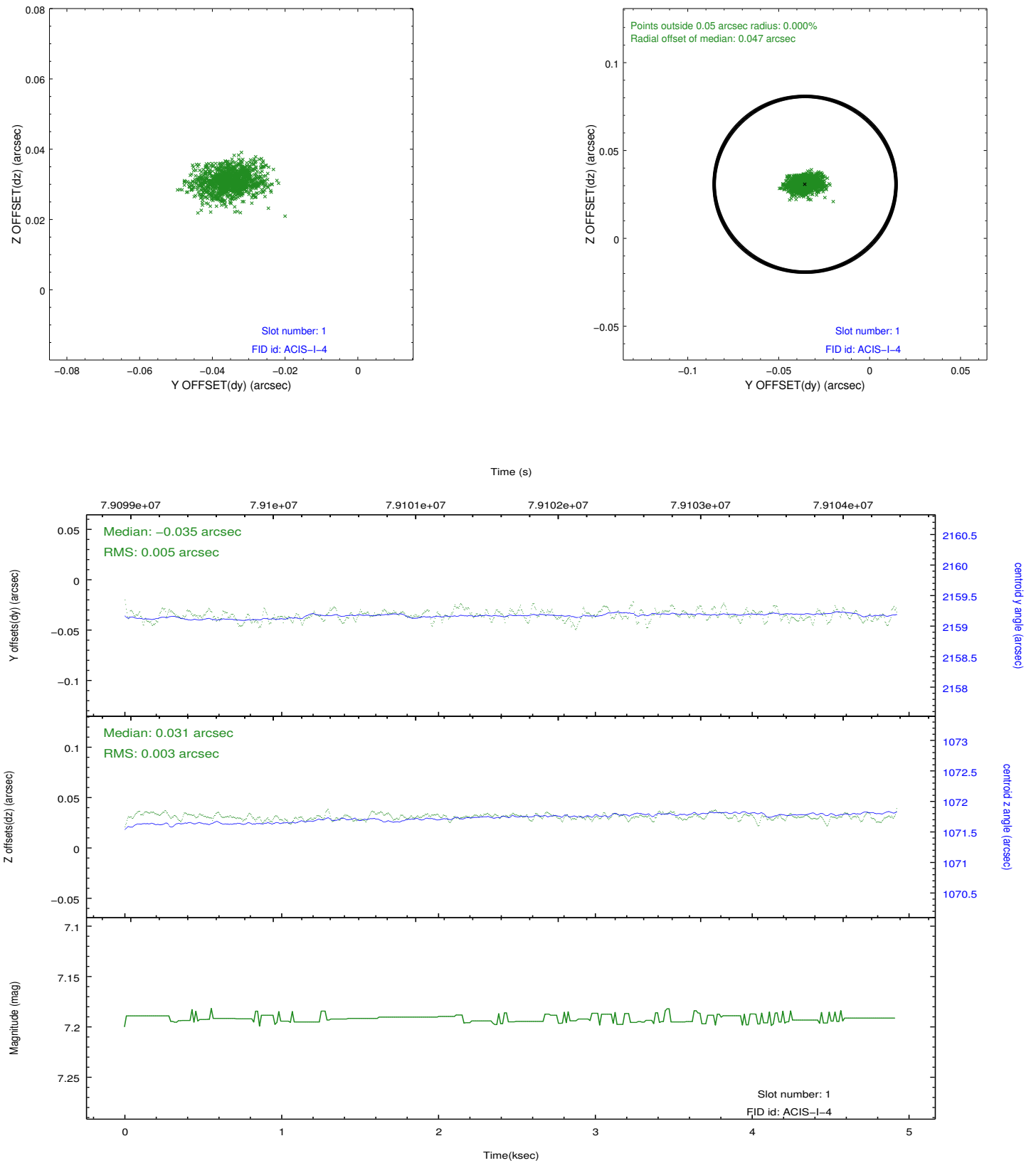


2.5 FID Slots

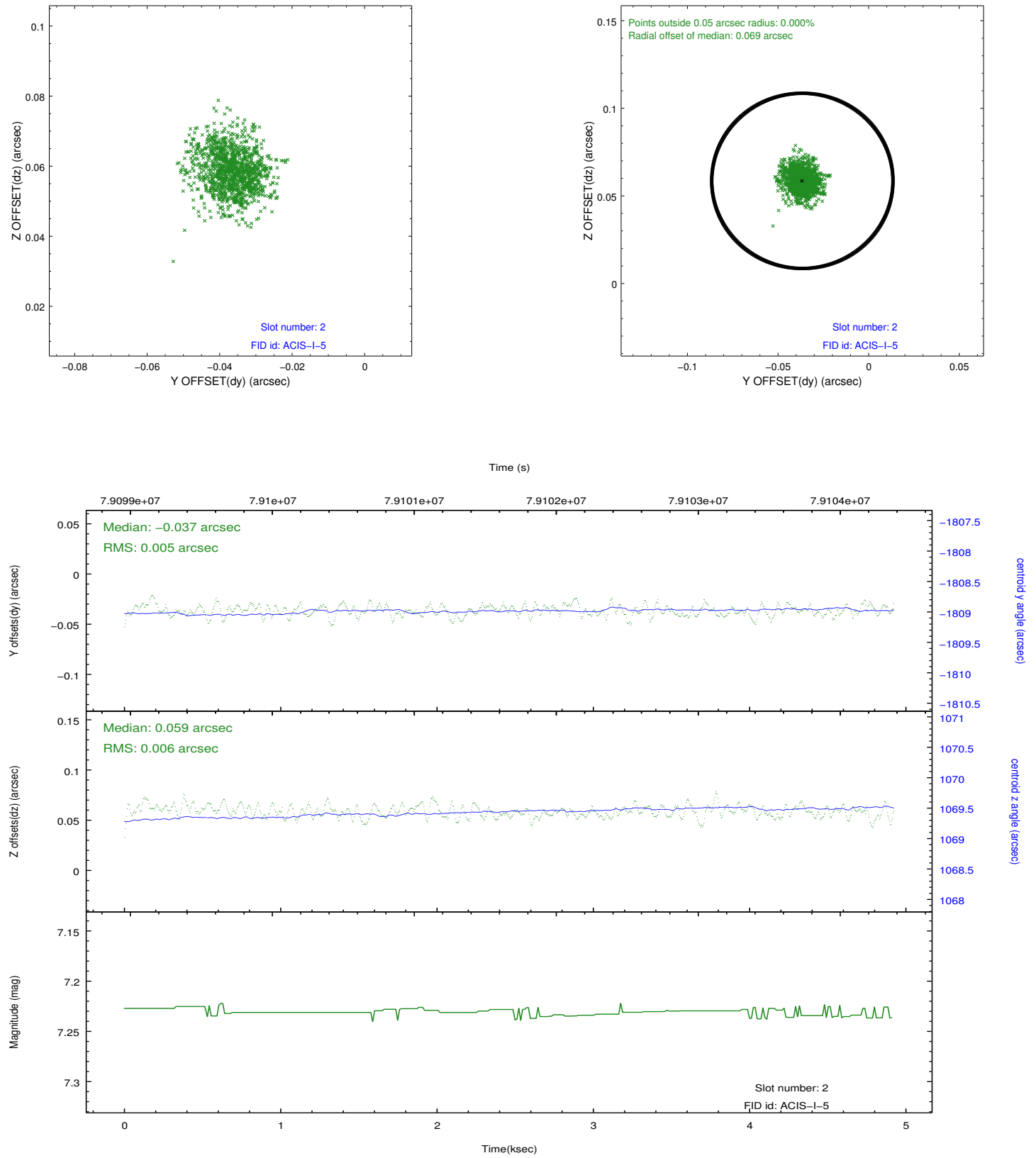
2.5.1 Slot 0



2.5.2 Slot 1



2.5.3 Slot 2



A Summary

A.1 Status

V&V Scientist	Jen Lauer
V&V Date (YYYY-MM-DD)	2012.09.04
V&V Edition	1
V&V Disposition and Status	OK
V&V Charge Time	4.483

A.2 Comments