

# V&V Reference Report

## L2 ASCDS Version : 7.6.10

Observation 61900 - L2 Version 001  
Chandra X-Ray Center

L2 Processing Date : Jun 9 2007

## Contents

<b>1</b>	<b>Front</b>	<b>2</b>
<b>2</b>	<b>OBI</b>	<b>3</b>
2.1	OBI . . . . .	3
2.1.1	Images . . . . .	3
2.1.2	Bias . . . . .	3
2.1.3	Parameters . . . . .	4
2.1.4	Events . . . . .	4
2.2	Compared Parameters . . . . .	5
2.3	Star Slots . . . . .	6
2.4	FID Slots . . . . .	6
<b>A</b>	<b>Summary</b>	<b>7</b>
A.1	Status . . . . .	7
A.2	Comments . . . . .	7

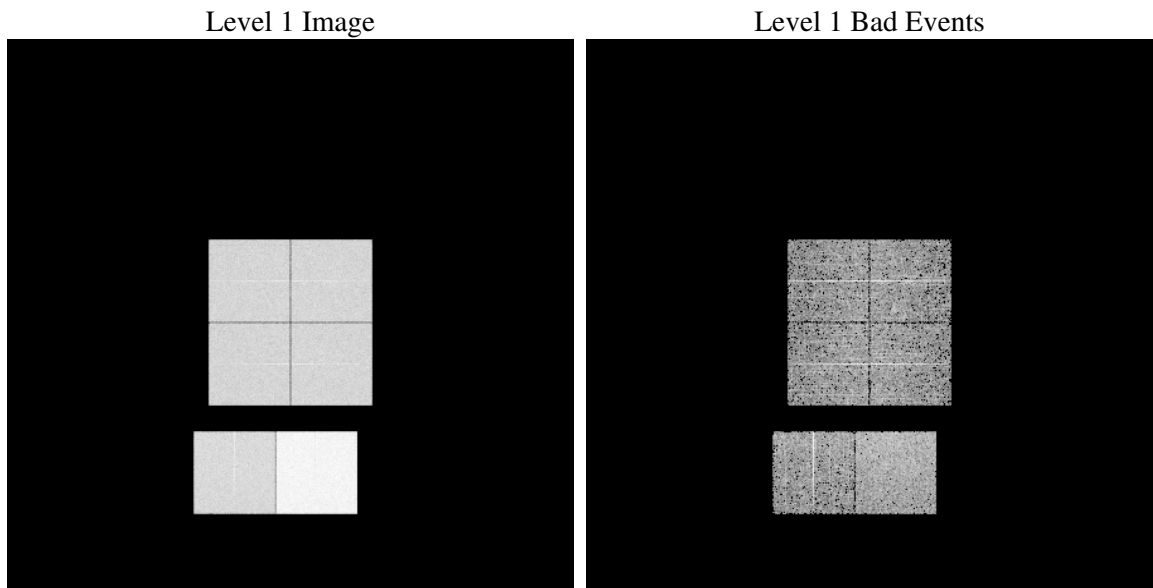
# 1 Front

seq_num	&#160
obs_id	61900
title	ACIS-012367 diagnostics
observer	CHANDRA engineering request/realtime commanding
object	&#160
dtcycle	0
cycle	P
ra_targ	0.0
dec_targ	0.0
ra_nom	20.328786765921
dec_nom	23.222055492855
roll_nom	143.48459311028
revision	3
ontime	5342.5280270576
livetime	5274.8777202949
ontime0	2325.1990429461
ontime1	2318.7580129504
ontime2	2247.4962230176
ontime3	2286.2245228589
ontime6	2464.6866133809
ontime7	5342.5280270576
l2events	1259577

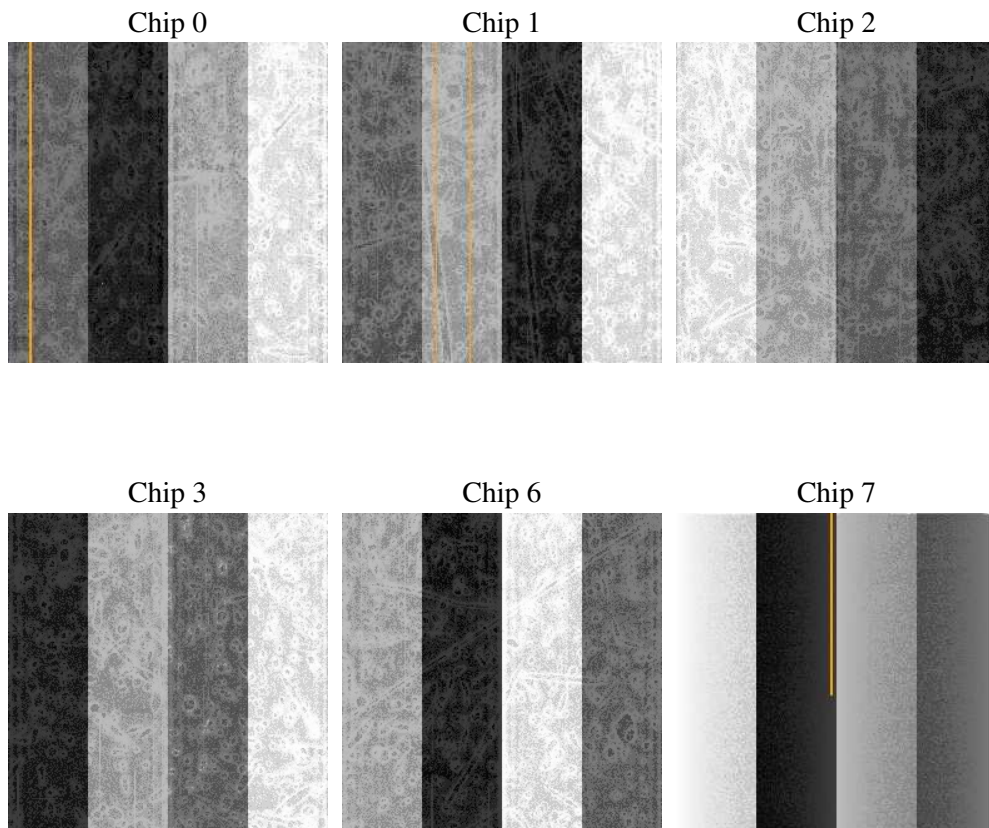
## 2 OBI

### 2.1 OBI

#### 2.1.1 Images



#### 2.1.2 Bias



### 2.1.3 Parameters

obi_num	0
ascdsver	7.6.10
caldsver	3.4.0
date	2007-06-09T23:46:02
revision	3

sched_exp_time	0.0
ontime	5342.5280270576
ontime0	2325.1990429461
ontime1	2318.7580129504
ontime2	2247.4962230176
ontime3	2286.2245228589
ontime6	2464.6866133809
ontime7	5342.5280270576
l1events	1429675

### 2.1.4 Events

	ccd 0	ccd 1	ccd 2	ccd 3	ccd 6	ccd 7
level 1 events	192585	193510	190763	193762	215498	443557
rejected events	17099	17940	18476	18376	19522	26113
rejected %	8%	9%	9%	9%	9%	5%

	ccd 0	ccd 1	ccd 2	ccd 3	ccd 6	ccd 7
grade 0 events	97244	97354	96226	98071	107505	108349
	50%	50%	50%	50%	49%	24%
grade 1 events	469	472	445	559	519	311
	0%	0%	0%	0%	0%	0%
grade 2 events	30727	30835	30270	30800	33673	92807
	15%	15%	15%	15%	15%	20%
grade 3 events	11268	11036	10890	11269	12169	43224
	5%	5%	5%	5%	5%	9%
grade 4 events	11073	11198	10659	11090	12215	42277
	5%	5%	5%	5%	5%	9%
grade 5 events	1391	1316	1216	1364	1584	5853
	0%	0%	0%	0%	0%	1%
grade 6 events	25449	25399	24477	24420	30666	131017
	13%	13%	12%	12%	14%	29%
grade 7 events	14964	15900	16580	16189	17167	19719
	7%	8%	8%	8%	7%	4%

## 2.2 Compared Parameters

Parameter	Planned	Actual	Parameter	Planned	Actual
Instrument	ACIS	ACIS	Obspar format version number	6	6
Detector	ACIS-012367	ACIS-012367	Obspar file type	PREDICTED	ACTUAL
Grating	NONE	NONE	Obspar update status	NONE	UPDATED
Data mode	FAINT	FAINT	On-chip summing requested	N	N
Observation mode	SECONDARY	SECONDARY	Subarray requested	NONE	NONE
Pointing RA	0	20.3287867659206	Alternating exposures requested	N	N
Pointing Dec	0	23.22205549285538	Primary exposure time	0.000000	3.2
Pointing Roll	0.0	143.4845931102802			
SIM focus pos (mm)	-0.782348	-1.428180813131781			
SIM defocus (mm)	0	0.1051558262725154			
SIM translation stage pos (mm)	-233.592463	250.466033080201			
SIM translation stage offset (mm)	0	-0.01005468664627074			
Observation start time	86575936.34900001	86575935.580172			
Observation start date	2000-09-29T00:52:16	2000-09-29T00:52:15			
Observation end time	86617848.59999999	86617847.831754			
Observation end date	2000-09-29T12:30:49	2000-09-29T12:30:47			
Read mode	TIMED	TIMED			

## **2.3 Star Slots**

## **2.4 FID Slots**

## A Summary

### A.1 Status

V&V Scientist	Beth Sundheim
V&V Date (YYYY-MM-DD)	2007.06.12
V&V Edition	1
V&V Disposition and Status	OK
V&V Charge Time	5.34252802

### A.2 Comments