

V&V Reference Report

L2 ASCDS Version : 7.6.9

Observation 61610 - L2 Version 001
Chandra X-Ray Center

L2 Processing Date : Nov 23 2006

Contents

1	Front	2
2	OBI	3
2.1	OBI	3
2.1.1	Images	3
2.1.2	Bias	3
2.1.3	Parameters	4
2.1.4	Events	4
2.2	Compared Parameters	5
2.3	Aspect	6
2.4	Star Slots	8
2.5	FID Slots	8
A	Summary	9
A.1	Status	9
A.2	Comments	9

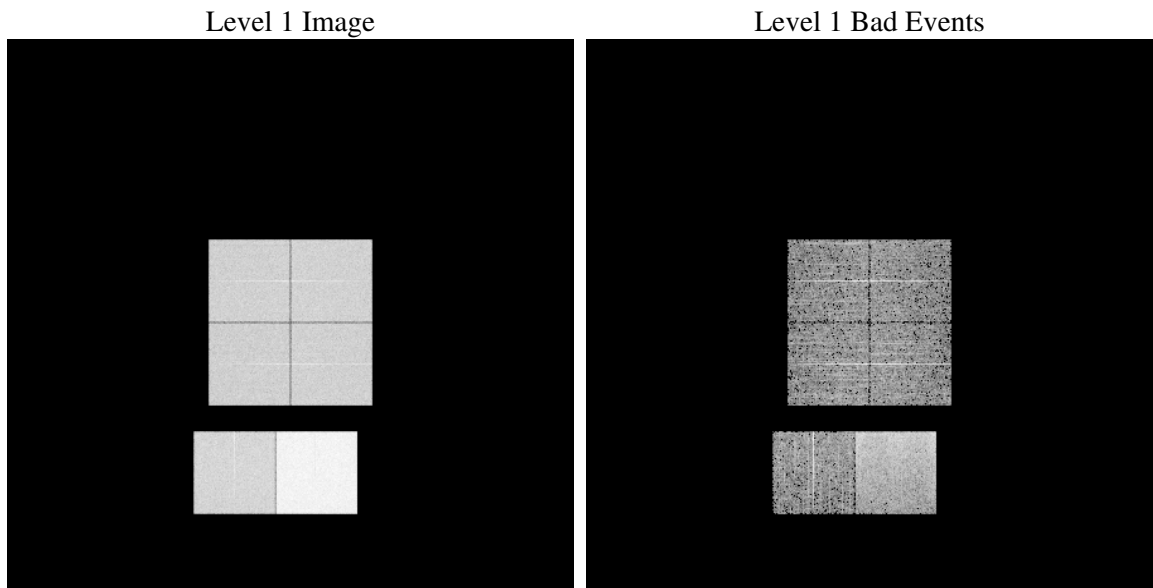
1 Front

seq_num	
obs_id	61610
title	ACIS-012367 diagnostics
observer	CHANDRA engineering request/realtime commanding
object	
dtcycle	0
cycle	P
ra_targ	0.0
dec_targ	0.0
ra_nom	210.00162072065
dec_nom	-4.0286144792551
roll_nom	240.52708414528
revision	2
ontime	6446.0949040651
livetime	6364.4705690175
ontime0	2622.2667934
ontime1	2683.3087337613
ontime2	2466.1597120315
ontime3	2563.390692398
ontime6	2845.3604940921
ontime7	6446.0949040651
l2events	1228443

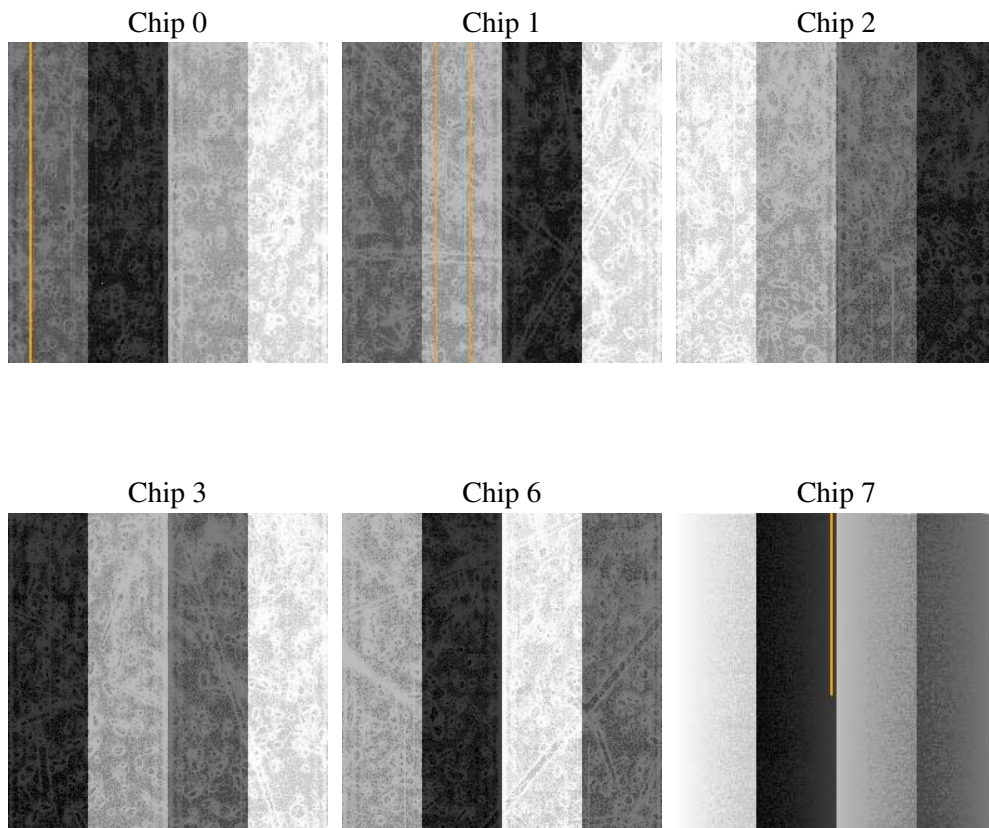
2 OBI

2.1 OBI

2.1.1 Images



2.1.2 Bias



2.1.3 Parameters

obi_num	0
ascdsver	7.6.9
caldsver	3.2.4
date	2006-11-23T08:18:01
revision	2

sched_exp_time	0.0
ontime	6449.6053733379
ontime0	2625.2398716062
ontime1	2686.819203034
ontime2	2469.6701813042
ontime3	2566.9011616707
ontime6	2848.8709633648
ontime7	6449.6053733379
l1events	1427325

2.1.4 Events

	ccd 0	ccd 1	ccd 2	ccd 3	ccd 6	ccd 7
level 1 events	187834	191917	181285	187699	214450	464140
rejected events	19467	18738	20968	20741	21700	45270
rejected %	10%	9%	11%	11%	10%	9%

	ccd 0	ccd 1	ccd 2	ccd 3	ccd 6	ccd 7
grade 0 events	92804	95576	89277	93896	105285	83394
	49%	49%	49%	50%	49%	17%
grade 1 events	427	484	451	516	528	203
	0%	0%	0%	0%	0%	0%
grade 2 events	30038	30582	28253	29312	33886	121802
	15%	15%	15%	15%	15%	26%
grade 3 events	10755	10974	10017	10439	11828	33382
	5%	5%	5%	5%	5%	7%
grade 4 events	10630	11000	10056	10423	11934	32617
	5%	5%	5%	5%	5%	7%
grade 5 events	1468	1472	1365	1403	1688	6647
	0%	0%	0%	0%	0%	1%
grade 6 events	24336	25275	22905	23096	30004	147854
	12%	13%	12%	12%	13%	31%
grade 7 events	17376	16554	18961	18614	19297	38241
	9%	8%	10%	9%	8%	8%

2.2 Compared Parameters

Parameter	Planned	Actual	Parameter	Planned	Actual
Instrument	ACIS	ACIS	Obspar format version number	6	6
Detector	ACIS-012367	ACIS-012367	Obspar file type	PREDICTED	ACTUAL
Grating	NONE	NONE	Obspar update status	NONE	UPDATED
Data mode	FAINT	FAINT	On-chip summing requested	N	N
Observation mode	SECONDARY	SECONDARY	Subarray requested	NONE	NONE
Pointing RA	0	210.0016207206463	Alternating exposures requested	N	N
Pointing Dec	0	-4.028614479255062	Primary exposure time	0.000000	3.2
Pointing Roll	0.0	240.5270841452781			
SIM focus pos (mm)	-0.782348	-0.6828225247311905			
SIM defocus (mm)	0	0.8505141146731063			
SIM translation stage pos (mm)	-233.592463	250.466033080201			
SIM translation stage offset (mm)	0	-0.01005468664627074			
Observation start time	107594314.506	107594313.73741			
Observation start date	2001-05-30T07:18:35	2001-05-30T07:18:33			
Observation end time	107604406.656	107604405.8878			
Observation end date	2001-05-30T10:06:47	2001-05-30T10:06:45			
Read mode	TIMED	TIMED			

2.3 Aspect

2.4 Star Slots

2.5 FID Slots

A Summary

A.1 Status

V&V Scientist	Jen Lauer
V&V Date (YYYY-MM-DD)	2006.11.24
V&V Edition	1
V&V Disposition and Status	OK
V&V Charge Time	6.4460949

A.2 Comments