

V&V Reference Report

L2 ASCDS Version : 7.6.9

Observation 61510 - L2 Version 001
Chandra X-Ray Center

L2 Processing Date : Dec 19 2006

Contents

1	Front	2
2	OBI	3
2.1	OBI	3
2.1.1	Images	3
2.1.2	Bias	3
2.1.3	Parameters	4
2.1.4	Events	4
2.2	Compared Parameters	5
2.3	Aspect	6
2.4	Star Slots	8
2.5	FID Slots	8
A	Summary	9
A.1	Status	9
A.2	Comments	9

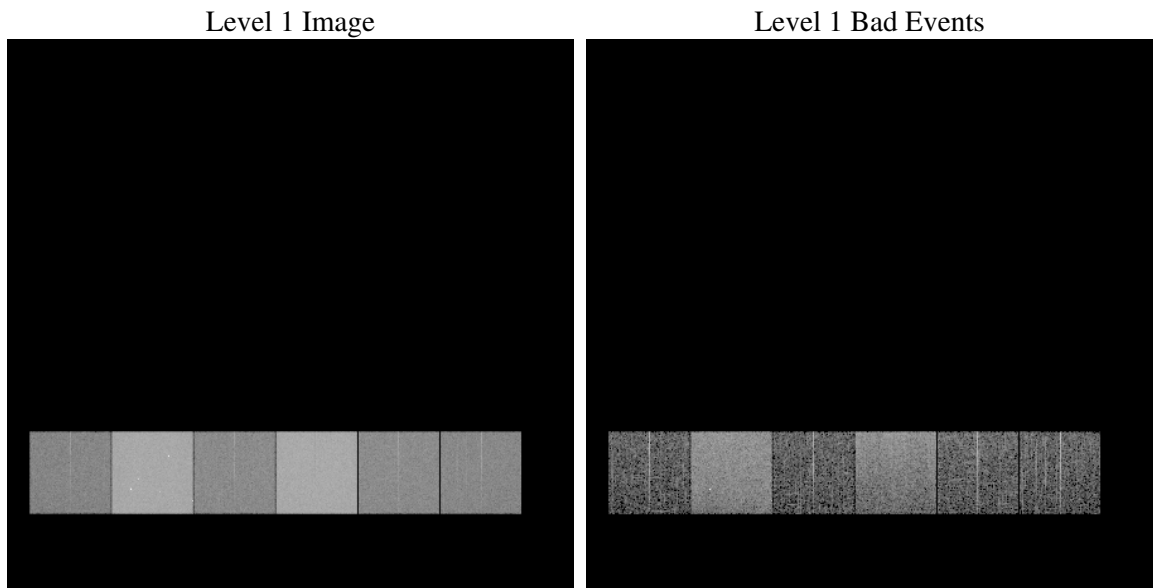
1 Front

seq_num	
obs_id	61510
title	ACIS-456789 diagnostics
observer	CHANDRA engineering request/realtime commanding
object	
dtcycle	0
cycle	P
ra_targ	0.0
dec_targ	0.0
ra_nom	330.02850292554
dec_nom	-49.977951445966
roll_nom	17.57214827916
revision	2
ontime	5666.0970072299
livetime	5594.3494752104
ontime4	2169.1825163662
ontime5	6089.7950045168
ontime6	2392.7730862945
ontime7	5666.0970072299
ontime8	2414.5101792514
ontime9	2259.7673166543
l2events	1201540

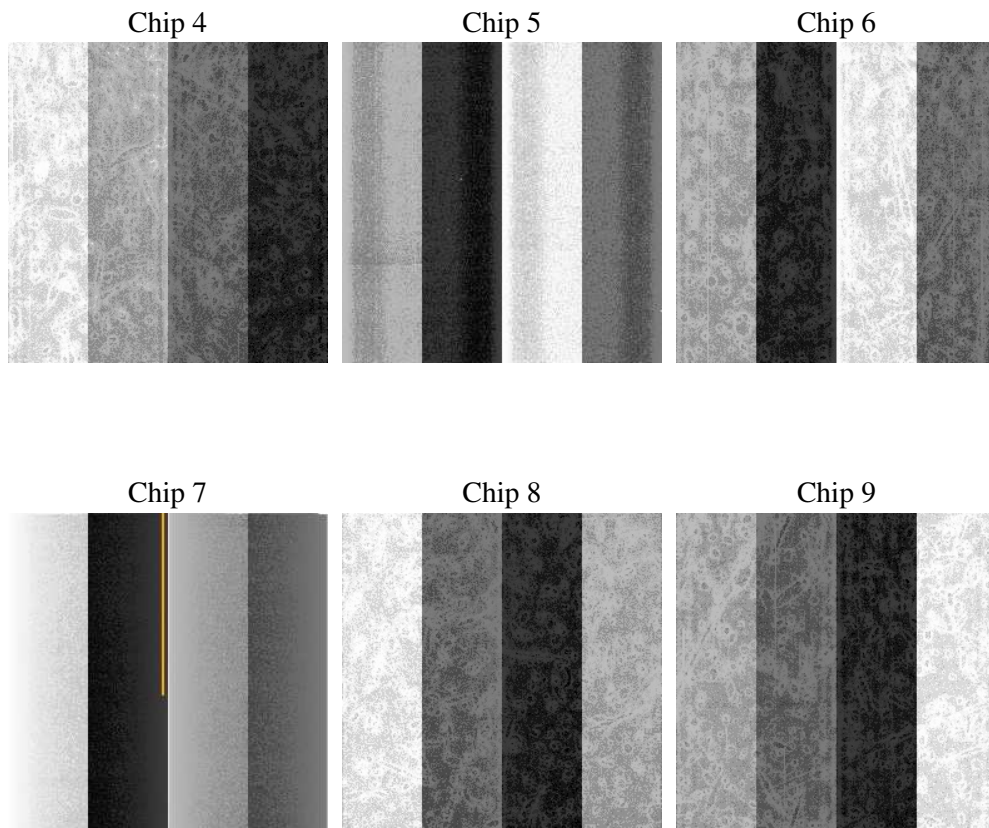
2 OBI

2.1 OBI

2.1.1 Images



2.1.2 Bias



2.1.3 Parameters

obi_num	0
ascdsver	7.6.9
caldsver	3.2.4
date	2006-12-19T18:06:58
revision	2

sched_exp_time	0.0
ontime	5668.5323020667
ontime4	2171.494691208
ontime5	6093.0983565152
ontime6	2395.1263011396
ontime7	5668.5323020667
ontime8	2417.8135312498
ontime9	2262.2436514944
l1events	1424716

2.1.4 Events

	ccd 4	ccd 5	ccd 6	ccd 7	ccd 8	ccd 9
level 1 events	146710	382594	171673	390386	175014	158339
rejected events	18266	52871	18466	40508	20768	19535
rejected %	12%	13%	10%	10%	11%	12%

	ccd 4	ccd 5	ccd 6	ccd 7	ccd 8	ccd 9
grade 0 events	72719	44516	84009	68099	85453	76321
	49%	11%	48%	17%	48%	48%
grade 1 events	378	239	429	153	394	401
	0%	0%	0%	0%	0%	0%
grade 2 events	22519	155225	26531	102650	27104	24499
	15%	40%	15%	26%	15%	15%
grade 3 events	7946	12373	9382	27712	9784	8613
	5%	3%	5%	7%	5%	5%
grade 4 events	7966	12122	9430	27451	9603	8525
	5%	3%	5%	7%	5%	5%
grade 5 events	1250	6502	1420	5972	1639	1378
	0%	1%	0%	1%	0%	0%
grade 6 events	17482	105643	24084	124165	22492	21059
	11%	27%	14%	31%	12%	13%
grade 7 events	16450	45974	16388	34184	18545	17543
	11%	12%	9%	8%	10%	11%

2.2 Compared Parameters

Parameter	Planned	Actual	Parameter	Planned	Actual
Instrument	ACIS	ACIS	Obspar format version number	6	6
Detector	ACIS-456789	ACIS-456789	Obspar file type	PREDICTED	ACTUAL
Grating	NONE	NONE	Obspar update status	NONE	UPDATED
Data mode	FAINT	FAINT	On-chip summing requested	N	N
Observation mode	SECONDARY	SECONDARY	Subarray requested	NONE	NONE
Pointing RA	0	330.0285029255358	Alternating exposures requested	N	N
Pointing Dec	0	-49.97795144596566	Primary exposure time	0.000000	3.2
Pointing Roll	0.0	17.57214827915996			
SIM focus pos (mm)	-0.684267	-0.6828225247311905			
SIM defocus (mm)	0	0.8505141146731063			
SIM translation stage pos (mm)	-190.132523	250.466033080201			
SIM translation stage offset (mm)	0	-0.01005468664627074			
Observation start time	113764488.797	113764488.02872			
Observation start date	2001-08-09T17:14:49	2001-08-09T17:14:48			
Observation end time	113777278.748	113777277.97922			
Observation end date	2001-08-09T20:47:59	2001-08-09T20:47:57			
Read mode	TIMED	TIMED			

2.3 Aspect

2.4 Star Slots

2.5 FID Slots

A Summary

A.1 Status

V&V Scientist	Jen Lauer
V&V Date (YYYY-MM-DD)	2006.12.19
V&V Edition	1
V&V Disposition and Status	OK
V&V Charge Time	5.666097

A.2 Comments