

V&V Reference Report

L2 ASCDS Version : 8.4.5

Observation 61450 - L2 Version 3
Chandra X-Ray Center

L2 Processing Date : Sep 25 2012

Contents

1	Front	2
2	OBI	3
2.1	OBI	3
2.1.1	Images	3
2.1.2	Bias	3
2.1.3	Parameters	4
2.1.4	Events	4
2.2	Compared Parameters	5
2.3	Star Slots	6
2.4	FID Slots	6
A	Summary	7
A.1	Status	7
A.2	Comments	7

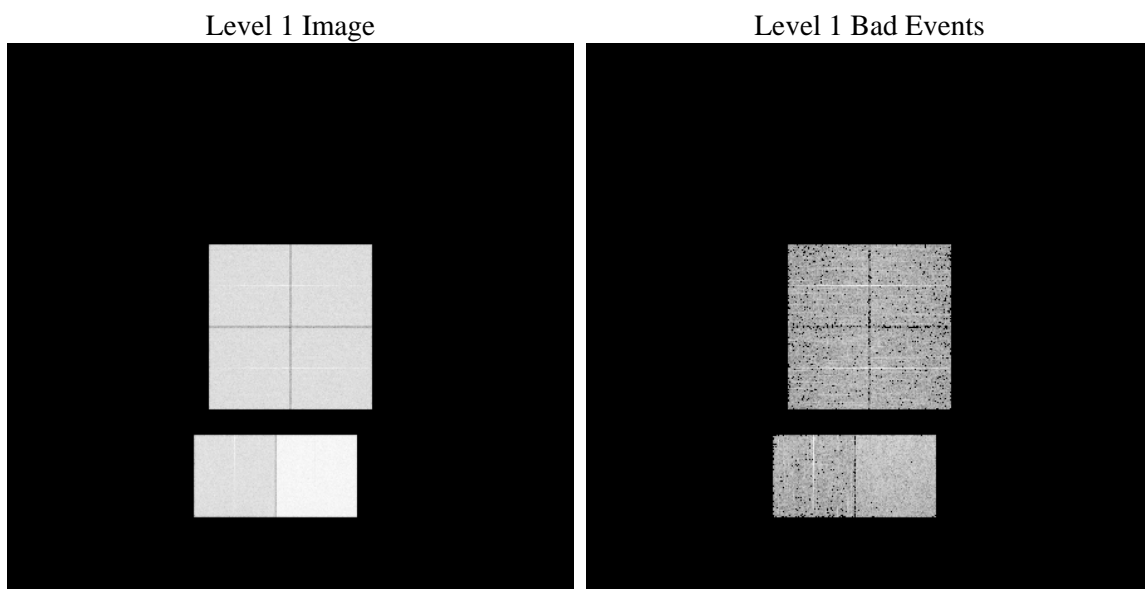
1 Front

seq_num	 	Sequence number
obs_id	61450	Observation id
title	ACIS-012367 diagnostics	Proposal title
observer	CHANDRA engineering request/realtime commanding	Principal investig
object	 	Source name
dtcycle	0	
cycle	P	events from which exps? Prim/Second/Both
ra_targ	0.0	Observer's specified target RA [deg]
dec_targ	0.0	Observer's specified target Dec [deg]
ra_nom	136.99753646667	Nominal RA [deg]
dec_nom	40.028558025695	Nominal Dec [deg]
roll_nom	61.027742058041	Nominal Roll [deg]
revision	3	Processing version of data
ontime	6822.0484619588	Sum of GTIs [s]
livetime	6735.663576589	Livetime [s]
ontime0	2870.2548098862	Sum of GTIs [s]
ontime1	2881.0196496248	Sum of GTIs [s]
ontime2	2789.3114286214	Sum of GTIs [s]
ontime3	2815.0750003755	Sum of GTIs [s]
ontime6	2916.6708106995	Sum of GTIs [s]
ontime7	6822.0484619588	Sum of GTIs [s]
l2events	1238387	Number of level 2 events

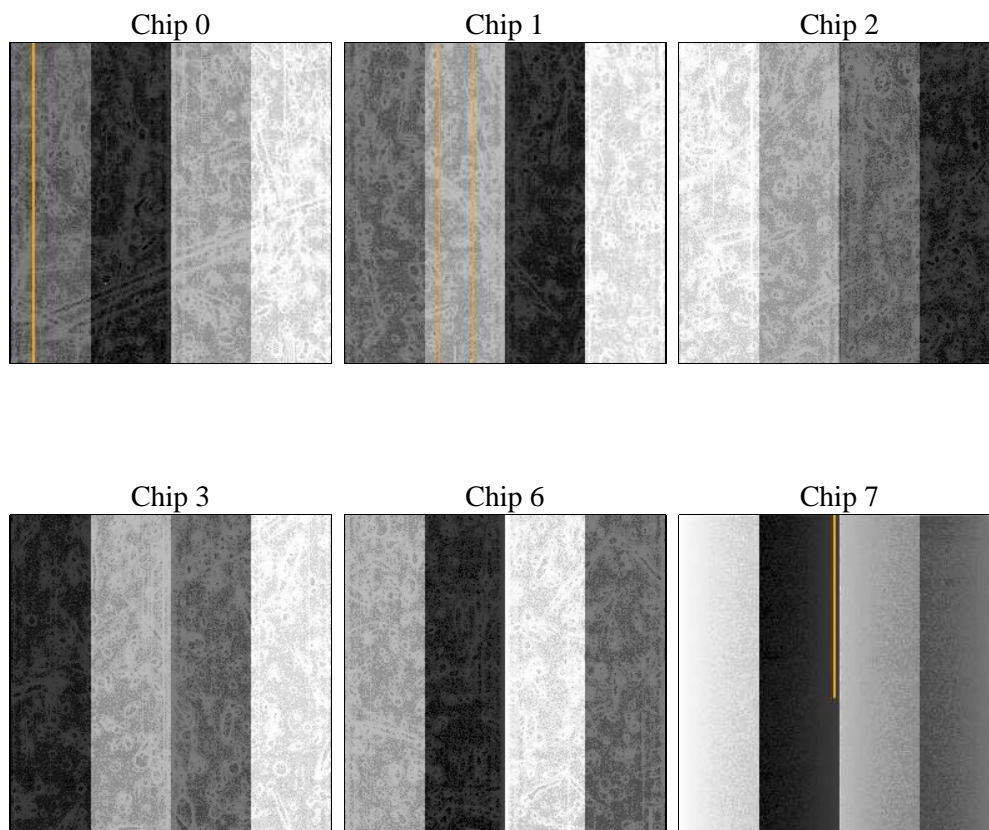
2 OBI

2.1 OBI

2.1.1 Images



2.1.2 Bias



2.1.3 Parameters

obi_num	1	Obi number	sched_exp_time	0.0	[s] Scheduled observation exposure time
ascdsver	8.4.5	Processing system revision	ontime	6822.0484619588	Sum of GTIs [s]
caldsver	4.5.1.1	 	ontime0	2870.2548098862	Sum of GTIs [s]
date	2012-09-25T04:31:16	Date and time of file creation	ontime1	2881.0196496248	Sum of GTIs [s]
revision	3	Processing version of data	ontime2	2789.3114286214	Sum of GTIs [s]
			ontime3	2815.0750003755	Sum of GTIs [s]
			ontime6	2916.6708106995	Sum of GTIs [s]
			ontime7	6822.0484619588	Sum of GTIs [s]
			l1events	1424358	Number of level 1 events

2.1.4 Events

	ccd 0	ccd 1	ccd 2	ccd 3	ccd 6	ccd 7		ccd 0	ccd 1	ccd 2	ccd 3	ccd 6	ccd 7
level 1 events	191547	192675	189392	190508	205614	454622	grade 0 events	94404	95487	94420	95134	100218	109191
rejected events	19765	20267	19982	19874	21329	32277		49%	49%	49%	49%	48%	24%
rejected %	10%	10%	10%	10%	10%	7%	grade 1 events	446	485	481	508	478	279
								0%	0%	0%	0%	0%	0%
							grade 2 events	30598	30463	29808	29802	31877	94104
								15%	15%	15%	15%	15%	20%
							grade 3 events	11005	10781	10615	10858	11339	43150
								5%	5%	5%	5%	5%	9%
							grade 4 events	10805	10831	10563	10785	11476	42495
								5%	5%	5%	5%	5%	9%
							grade 5 events	1473	1453	1351	1452	1665	6924
								0%	0%	0%	0%	0%	1%
							grade 6 events	24970	25057	24004	24055	29611	133621
								13%	13%	12%	12%	14%	29%
							grade 7 events	17846	18118	18150	17914	18950	24858
								9%	9%	9%	9%	9%	5%

2.2 Compared Parameters

Parameter	Planned	Actual	Parameter	Planned	Actual
Instrument	ACIS	ACIS	Obspar format version number	7	7
Detector	ACIS-012367	ACIS-012367	Obspar file type	PREDICTED	ACTUAL
Grating	NONE	NONE	Obspar update status	NONE	UPDATED
Data mode	FAINT	FAINT	On-chip summing requested	N	N
Observation mode	SECONDARY	SECONDARY	Subarray requested	NONE	NONE
[deg] Pointing RA	0	136.9975364666691	Alternating exposures requested	N	N
[deg] Pointing Dec	0	40.02855802569479	[s] Primary exposure time	0.000000	3.2
[deg] Pointing Roll	0.0	61.02774205804094			
[mm] SIM focus pos	-0.782348	-1.428180813131781			
[mm] SIM defocus	0	0.1051558262725154			
[mm] SIM translation stage pos	-233.592463	250.466033080201			
[mm] SIM translation stage offset	0	-0.01005468664627074			
[s] Observation start time (MET)	118561568.937	118561568.16832			
Observation start date	2001-10-04T05:46:09	2001-10-04T05:46:08			
[s] Observation end time (MET)	118594518.588	118594517.81963			
Observation end date	2001-10-04T14:55:19	2001-10-04T14:55:17			
Read mode	TIMED	TIMED			

2.3 Star Slots

2.4 FID Slots

A Summary

A.1 Status

V&V Scientist	Jen Lauer
V&V Date (YYYY-MM-DD)	2012.09.27
V&V Edition	1
V&V Disposition and Status	OK
V&V Charge Time	6.8220484619588

A.2 Comments