

V&V Reference Report

L2 ASCDS Version : 8.4.5

Observation 61280 - L2 Version 3
Chandra X-Ray Center

L2 Processing Date : Oct 3 2012

Contents

1	Front	2
2	OBI	3
2.1	OBI	3
2.1.1	Images	3
2.1.2	Bias	3
2.1.3	Parameters	4
2.1.4	Events	4
2.2	Compared Parameters	5
2.3	Star Slots	6
2.4	FID Slots	6
A	Summary	7
A.1	Status	7
A.2	Comments	7

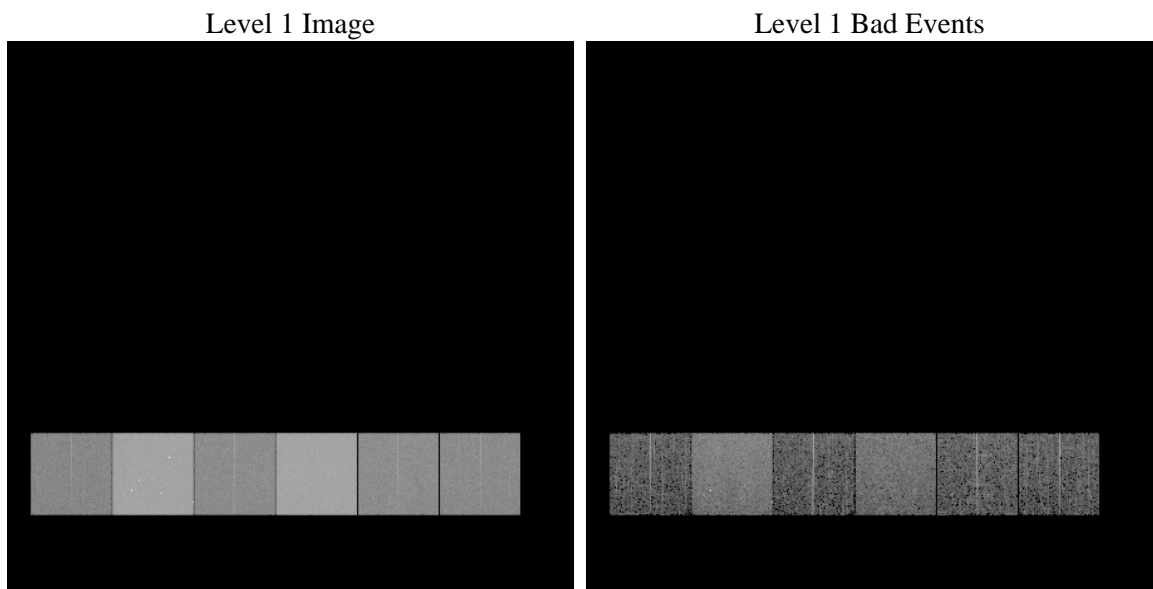
1 Front

seq_num	 	Sequence number
obs_id	61280	Observation id
title	ACIS-456789 diagnostics	Proposal title
observer	CHANDRA engineering request/realtime commanding	Principal investig
object	 	Source name
dtcycle	0	
cycle	P	events from which exps? Prim/Second/Both
ra_targ	0.0	Observer's specified target RA [deg]
dec_targ	0.0	Observer's specified target Dec [deg]
ra_nom	150.03206901667	Nominal RA [deg]
dec_nom	-29.993135611424	Nominal Dec [deg]
roll_nom	341.07343277689	Nominal Roll [deg]
revision	3	Processing version of data
ontime	6679.7186320573	Sum of GTIs [s]
livetime	6595.1360126945	Livetime [s]
ontime4	2382.1369269341	Sum of GTIs [s]
ontime5	7123.7308791429	Sum of GTIs [s]
ontime6	2690.0605324954	Sum of GTIs [s]
ontime7	6679.7186320573	Sum of GTIs [s]
ontime8	2706.2654038817	Sum of GTIs [s]
ontime9	2605.7936124653	Sum of GTIs [s]
l2events	1220002	Number of level 2 events

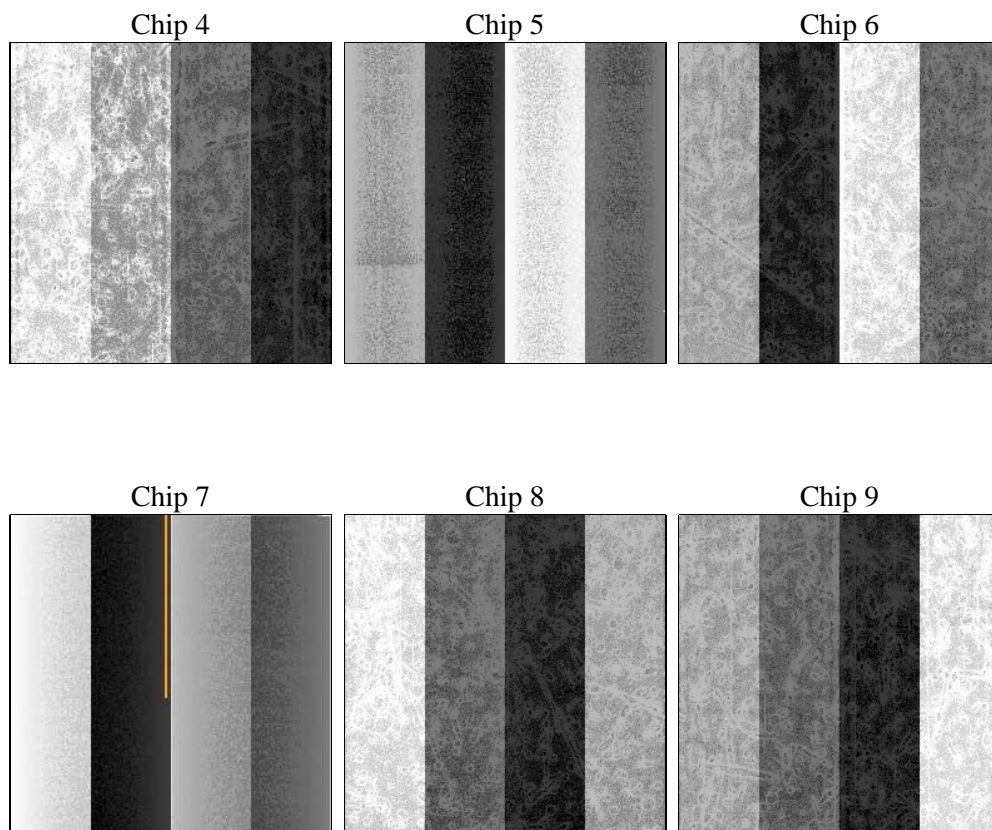
2 OBI

2.1 OBI

2.1.1 Images



2.1.2 Bias



2.1.3 Parameters

obi_num	0	Obi number	sched_exp_time	0.0	[s] Scheduled observation exposure time
ascdsver	8.4.5	Processing system revision	ontime	6679.7186320573	Sum of GTIs [s]
caldbver	4.5.2	 	ontime4	2382.1369269341	Sum of GTIs [s]
date	2012-10-03T06:13:25	Date and time of file creation	ontime5	7123.7308791429	Sum of GTIs [s]
revision	3	Processing version of data	ontime6	2690.0605324954	Sum of GTIs [s]
			ontime7	6679.7186320573	Sum of GTIs [s]
			ontime8	2706.2654038817	Sum of GTIs [s]
			ontime9	2605.7936124653	Sum of GTIs [s]
			l1events	1449768	Number of level 1 events

2.1.4 Events

	ccd 4	ccd 5	ccd 6	ccd 7	ccd 8	ccd 9		ccd 4	ccd 5	ccd 6	ccd 7	ccd 8	ccd 9
level 1 events	141608	398637	169772	405819	174172	159760	grade 0 events	68550	80257	81661	93863	82995	75869
rejected events	20329	53243	20561	36172	23071	21217		48%	20%	48%	23%	47%	47%
rejected %	14%	13%	12%	8%	13%	13%	grade 1 events	367	257	400	219	422	397
								0%	0%	0%	0%	0%	0%
							grade 2 events	21384	127517	25936	82850	26810	24455
								15%	31%	15%	20%	15%	15%
							grade 3 events	7463	20577	9023	37751	9609	8534
								5%	5%	5%	9%	5%	5%
							grade 4 events	7334	20509	9202	37198	9428	8701
								5%	5%	5%	9%	5%	5%
							grade 5 events	1289	10147	1506	7225	1688	1451
								0%	2%	0%	1%	0%	0%
							grade 6 events	16548	96534	23389	117985	22259	20984
								11%	24%	13%	29%	12%	13%
							grade 7 events	18673	42839	18655	28728	20961	19369
								13%	10%	10%	7%	12%	12%

2.2 Compared Parameters

Parameter	Planned	Actual	Parameter	Planned	Actual
Instrument	ACIS	ACIS	Obspar format version number	7	7
Detector	ACIS-456789	ACIS-456789	Obspar file type	PREDICTED	ACTUAL
Grating	NONE	NONE	Obspar update status	NONE	UPDATED
Data mode	FAINT	FAINT	On-chip summing requested	N	N
Observation mode	SECONDARY	SECONDARY	Subarray requested	NONE	NONE
[deg] Pointing RA	0	150.0320690166724	Alternating exposures requested	N	N
[deg] Pointing Dec	0	-29.99313561142402	[s] Primary exposure time	0.000000	3.2
[deg] Pointing Roll	0.0	341.0734327768853			
[mm] SIM focus pos	-0.684267	-0.6828225247311905			
[mm] SIM defocus	0	0.8505141146731063			
[mm] SIM translation stage pos	-190.132523	250.466033080201			
[mm] SIM translation stage offset	0	-0.01005468664627074			
[s] Observation start time (MET)	131355336.549	131355335.78089			
Observation start date	2002-03-01T07:35:37	2002-03-01T07:35:35			
[s] Observation end time (MET)	131394046.701	131394045.93245			
Observation end date	2002-03-01T18:20:47	2002-03-01T18:20:45			
Read mode	TIMED	TIMED			

2.3 Star Slots

2.4 FID Slots

A Summary

A.1 Status

V&V Scientist	Jen Lauer
V&V Date (YYYY-MM-DD)	2012.10.04
V&V Edition	1
V&V Disposition and Status	OK
V&V Charge Time	6.6797186320573

A.2 Comments