

# V&V Reference Report

## L2 ASCDS Version : 8.4.5

Observation 61270 - L2 Version 5  
Chandra X-Ray Center

L2 Processing Date : Oct 3 2012

## Contents

<b>1</b>	<b>Front</b>	<b>2</b>
<b>2</b>	<b>OBI</b>	<b>3</b>
2.1	OBI . . . . .	3
2.1.1	Images . . . . .	3
2.1.2	Bias . . . . .	3
2.1.3	Parameters . . . . .	4
2.1.4	Events . . . . .	4
2.2	Compared Parameters . . . . .	5
2.3	Star Slots . . . . .	6
2.4	FID Slots . . . . .	6
<b>A</b>	<b>Summary</b>	<b>7</b>
A.1	Status . . . . .	7
A.2	Comments . . . . .	7

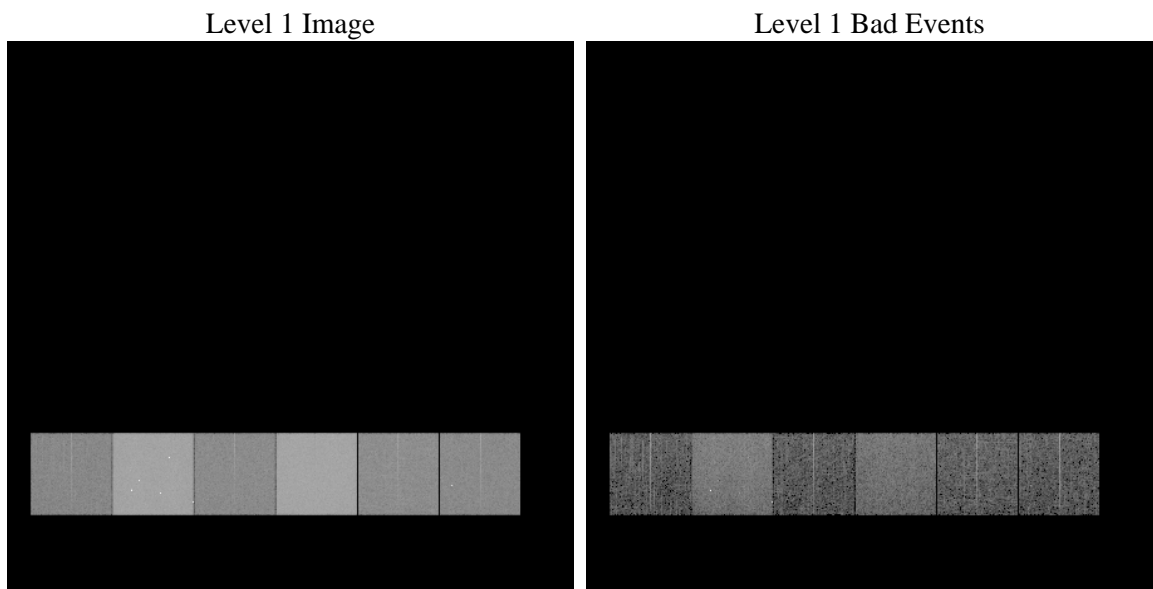
# 1 Front

seq_num	&#160	Sequence number
obs_id	61270	Observation id
title	ACIS-456789 diagnostics	Proposal title
observer	CHANDRA engineering request/realtime commanding	Principal investig
object	&#160	Source name
dtcycle	0	&#160
cycle	P	events from which exps? Prim/Second/Both
ra_targ	0.0	Observer's specified target RA [deg]
dec_targ	0.0	Observer's specified target Dec [deg]
ra_nom	186.24921678555	Nominal RA [deg]
dec_nom	-19.796430306287	Nominal Dec [deg]
roll_nom	32.659917434933	Nominal Roll [deg]
revision	5	Processing version of data
ontime	6619.0474326015	Sum of GTIs [s]
livetime	6535.233068498	Livetime [s]
ontime4	2375.6799318641	Sum of GTIs [s]
ontime5	6987.6058528125	Sum of GTIs [s]
ontime6	2576.6240027994	Sum of GTIs [s]
ontime7	6619.0474326015	Sum of GTIs [s]
ontime8	2707.0128127486	Sum of GTIs [s]
ontime9	2547.4546528608	Sum of GTIs [s]
l2events	1194756	Number of level 2 events

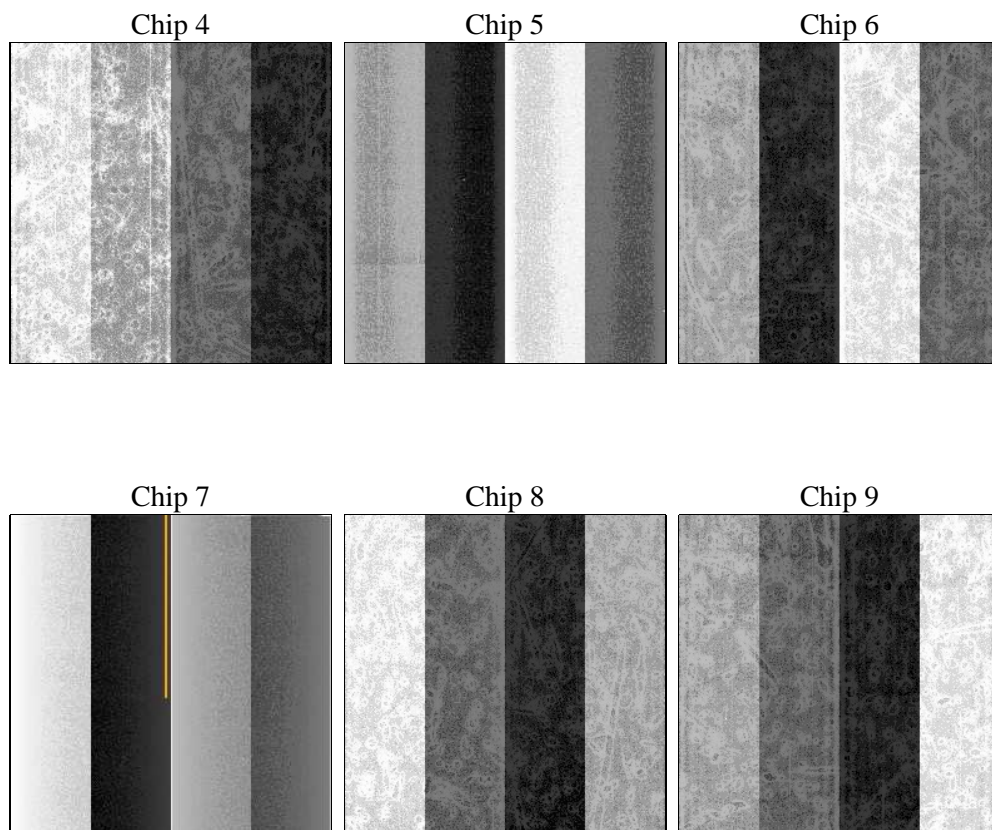
## 2 OBI

### 2.1 OBI

#### 2.1.1 Images



#### 2.1.2 Bias



### 2.1.3 Parameters

obi_num	0	Obi number	sched_exp_time	7980	[s] Scheduled observation exposure time
ascdsver	8.4.5	Processing system revision	ontime	6619.0474326015	Sum of GTIs [s]
caldsver	4.5.2	&#160	ontime4	2375.6799318641	Sum of GTIs [s]
date	2012-10-03T19:55:35	Date and time of file creation	ontime5	6987.6058528125	Sum of GTIs [s]
revision	5	Processing version of data	ontime6	2576.6240027994	Sum of GTIs [s]
			ontime7	6619.0474326015	Sum of GTIs [s]
			ontime8	2707.0128127486	Sum of GTIs [s]
			ontime9	2547.4546528608	Sum of GTIs [s]
			l1events	1449924	Number of level 1 events

### 2.1.4 Events

	ccd 4	ccd 5	ccd 6	ccd 7	ccd 8	ccd 9		ccd 4	ccd 5	ccd 6	ccd 7	ccd 8	ccd 9
level 1 events	143560	400554	163732	407488	176573	158017	grade 0 events	69059	81303	78385	94014	84284	76213
rejected events	22878	60575	22040	42849	25962	22525		48%	20%	47%	23%	47%	48%
rejected %	15%	15%	13%	10%	14%	14%	grade 1 events	377	569	410	230	398	394
								0%	0%	0%	0%	0%	0%
							grade 2 events	21821	126535	24922	81879	27084	24105
								15%	31%	15%	20%	15%	15%
							grade 3 events	7528	20426	8790	37669	9609	8293
								5%	5%	5%	9%	5%	5%
							grade 4 events	7245	20076	8840	37389	9651	8402
								5%	5%	5%	9%	5%	5%
							grade 5 events	1214	9958	1460	7247	1637	1577
								0%	2%	0%	1%	0%	0%
							grade 6 events	16654	97080	22684	119477	22630	20520
								11%	24%	13%	29%	12%	12%
							grade 7 events	19662	44607	18241	29583	21280	18513
								13%	11%	11%	7%	12%	11%

## 2.2 Compared Parameters

Parameter	Planned	Actual
Instrument	ACIS	ACIS
Detector	ACIS-456789	ACIS-456789
Grating	NONE	NONE
Data mode	FAINT	FAINT
Observation mode	SECONDARY	SECONDARY
[deg] Pointing RA	186.2492167855547	186.2492167855547
[deg] Pointing Dec	-19.79643030628684	-19.79643030628684
[deg] Pointing Roll	32.6599174349334	32.6599174349334
[mm] SIM focus pos	-0.68282252473119	-0.68282252473119
[mm] SIM defocus	0.8505140384245534	0.8505140384245534
[mm] SIM translation stage pos	250.4660330802	250.4660330802
[mm] SIM translation stage offset	-0.01005726120527584	-0.01005726120527584
[s] Observation start time (MET)	132275245.6431	132275245.6431
Observation start date	2002-03-11T23:30:00	2002-03-11T23:07:25
[s] Observation end time (MET)	132284524.709932	132284524.709932
Observation end date	2002-03-12T01:43:00	2002-03-12T01:42:04
Read mode	TIMED	TIMED

Parameter	Planned	Actual
Obspar format version number	7	7
Obspar file type	PREDICTED	ACTUAL
Obspar update status	OVERRIDE	OVERRIDE
Number of optional ACIS chips dropped	0	0
On-chip summing requested	N	N
Subarray requested	NONE	NONE
Alternating exposures requested	N	N
[s] Primary exposure time	3.2	3.2

## 2.3 Star Slots

## 2.4 FID Slots

## **A Summary**

### **A.1 Status**

V&V Scientist	Jen Lauer
V&V Date (YYYY-MM-DD)	2012.10.18
V&V Edition	1
V&V Disposition and Status	OK
V&V Charge Time	6.6190474326015

### **A.2 Comments**