

V&V Reference Report

L2 ASCDS Version : 8.4.5

Observation 61220 - L2 Version 3
Chandra X-Ray Center

L2 Processing Date : Oct 5 2012

Contents

1	Front	2
2	OBI	3
2.1	OBI	3
2.1.1	Images	3
2.1.2	Bias	3
2.1.3	Parameters	4
2.1.4	Events	4
2.2	Compared Parameters	5
2.3	Star Slots	6
2.4	FID Slots	6
A	Summary	7
A.1	Status	7
A.2	Comments	7

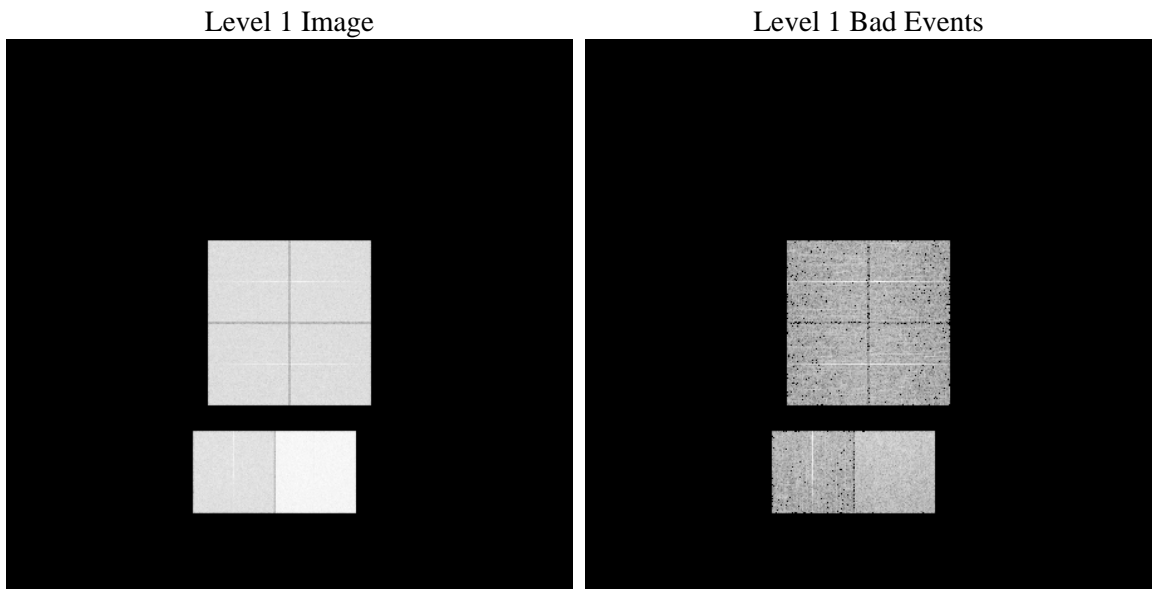
1 Front

seq_num	 	Sequence number
obs_id	61220	Observation id
title	ACIS-012367 diagnostics	Proposal title
observer	CHANDRA engineering request/realtime commanding	Principal investig
object	 	Source name
dtycle	0	
cycle	P	events from which exps? Prim/Second/Both
ra_targ	0.0	Observer's specified target RA [deg]
dec_targ	0.0	Observer's specified target Dec [deg]
ra_nom	83.051959461875	Nominal RA [deg]
dec_nom	59.987989271378	Nominal Dec [deg]
roll_nom	302.36488450186	Nominal Roll [deg]
revision	3	Processing version of data
ontime	8462.9135584831	Sum of GTIs [s]
livetime	8355.7510512509	Livetime [s]
ontime0	3604.6589072049	Sum of GTIs [s]
ontime1	3665.6078571379	Sum of GTIs [s]
ontime2	3506.7989709973	Sum of GTIs [s]
ontime3	3516.5211536884	Sum of GTIs [s]
ontime6	3834.6469549537	Sum of GTIs [s]
ontime7	8462.9135584831	Sum of GTIs [s]
l2events	1329129	Number of level 2 events

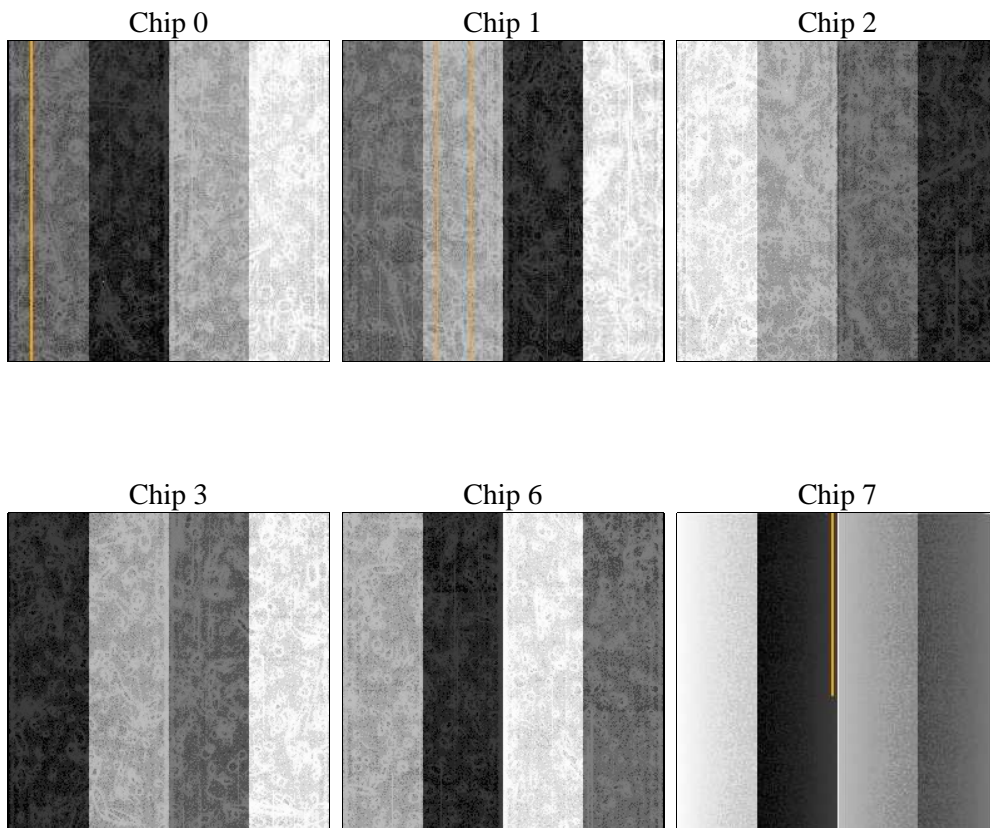
2 OBI

2.1 OBI

2.1.1 Images



2.1.2 Bias



2.1.3 Parameters

obi_num	1	Obi number	sched_exp_time	0.0	[s] Scheduled observation exposure time
ascdsver	8.4.5	Processing system revision	ontime	8462.9135584831	Sum of GTIs [s]
caldbver	4.5.2	 	ontime0	3604.6589072049	Sum of GTIs [s]
date	2012-10-05T21:55:40	Date and time of file creation	ontime1	3665.6078571379	Sum of GTIs [s]
revision	3	Processing version of data	ontime2	3506.7989709973	Sum of GTIs [s]
			ontime3	3516.5211536884	Sum of GTIs [s]
			ontime6	3834.6469549537	Sum of GTIs [s]
			ontime7	8462.9135584831	Sum of GTIs [s]
			l1events	1560614	Number of level 1 events

2.1.4 Events

	ccd 0	ccd 1	ccd 2	ccd 3	ccd 6	ccd 7		ccd 0	ccd 1	ccd 2	ccd 3	ccd 6	ccd 7
level 1 events	208642	211573	205734	206446	232483	495736	grade 0 events	100884	102585	100058	100475	111888	113428
rejected events	25284	24853	25480	25997	27641	45479		48%	48%	48%	48%	48%	22%
rejected %	12%	11%	12%	12%	11%	9%	grade 1 events	498	511	465	546	517	282
								0%	0%	0%	0%	0%	0%
							grade 2 events	32358	32951	31547	31549	35151	99592
								15%	15%	15%	15%	15%	20%
							grade 3 events	11843	11792	11430	11384	12643	45594
								5%	5%	5%	5%	5%	9%
							grade 4 events	11541	11869	11421	11437	12675	45462
								5%	5%	5%	5%	5%	9%
							grade 5 events	1816	1875	1777	1785	2079	9111
								0%	0%	0%	0%	0%	1%
							grade 6 events	26869	27523	25798	25604	32646	146387
								12%	13%	12%	12%	14%	29%
							grade 7 events	22833	22467	23238	23666	24884	35880
								10%	10%	11%	11%	10%	7%

2.2 Compared Parameters

Parameter	Planned	Actual	Parameter	Planned	Actual
Instrument	ACIS	ACIS	Obspar format version number	7	7
Detector	ACIS-012367	ACIS-012367	Obspar file type	PREDICTED	ACTUAL
Grating	NONE	NONE	Obspar update status	NONE	UPDATED
Data mode	FAINT	FAINT	On-chip summing requested	N	N
Observation mode	SECONDARY	SECONDARY	Subarray requested	NONE	NONE
[deg] Pointing RA	0	83.05195946187536	Alternating exposures requested	N	N
[deg] Pointing Dec	0	59.98798927137799	[s] Primary exposure time	0.000000	3.2
[deg] Pointing Roll	0.0	302.3648845018602			
[mm] SIM focus pos	-0.782348	-0.6828225247311905			
[mm] SIM defocus	0	0.8505141146731063			
[mm] SIM translation stage pos	-233.592463	250.466033080201			
[mm] SIM translation stage offset	0	-0.01005468664627074			
[s] Observation start time (MET)	136414406.961	136414405.93615			
Observation start date	2002-04-28T20:53:27	2002-04-28T20:53:25			
[s] Observation end time (MET)	136437420.262	136437419.23709			
Observation end date	2002-04-29T03:17:00	2002-04-29T03:16:59			
Read mode	TIMED	TIMED			

2.3 Star Slots

2.4 FID Slots

A Summary

A.1 Status

V&V Scientist	Beth Sundheim
V&V Date (YYYY-MM-DD)	2012.10.12
V&V Edition	1
V&V Disposition and Status	OK
V&V Charge Time	8.4629135584831

A.2 Comments