

V&V Reference Report

L2 ASCDS Version : 7.6.7.1

Observation 6120 - L2 Version 002
Chandra X-Ray Center

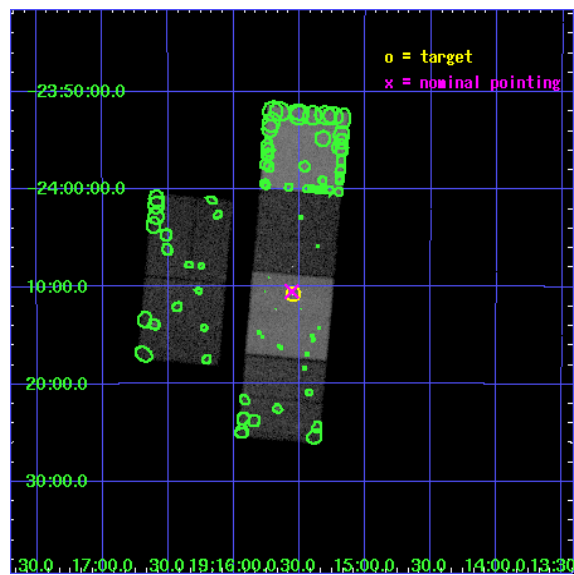
L2 Processing Date : Mar 8 2006

Contents

1	Front	2
2	OBI	3
2.1	OBI	3
2.1.1	Images	3
2.1.2	Bias	3
2.1.3	Parameters	4
2.1.4	Events	4
2.2	Compared Parameters	5
2.3	Aspect	6
2.4	Star Slots	9
2.4.1	Slot 3	9
2.4.2	Slot 4	10
2.4.3	Slot 5	11
2.4.4	Slot 6	12
2.5	FID Slots	13
2.5.1	Slot 0	13
2.5.2	Slot 1	14
2.5.3	Slot 2	15
3	Point Sources	16
A	Summary	17
A.1	Status	17
A.2	Comments	17

1 Front

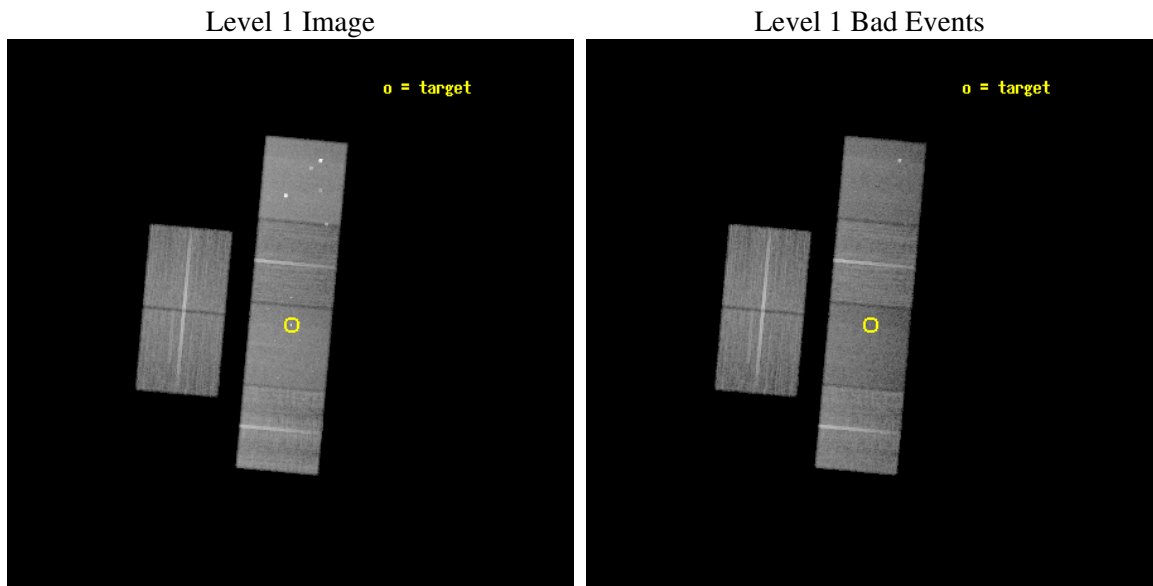
seq_num	200367
obs_id	6120
title	Planet-Induced Activity Enhancements in the HD 179949 System
observer	Dr. Steven Saar
object	HD 179949
dtcycle	0
cycle	P
ra_targ	288.888333
dec_targ	-24.179361
ra_nom	288.8897761658
dec_nom	-24.175219352121
roll_nom	95.210558398964
revision	2
ontime	30025.599888146
livetime	29645.397663117
ontime2	30022.358917743
ontime3	30025.599888146
ontime5	30025.599888146
ontime6	30025.599888146
ontime7	30025.599888146
ontime8	30025.599888146
l2events	262764



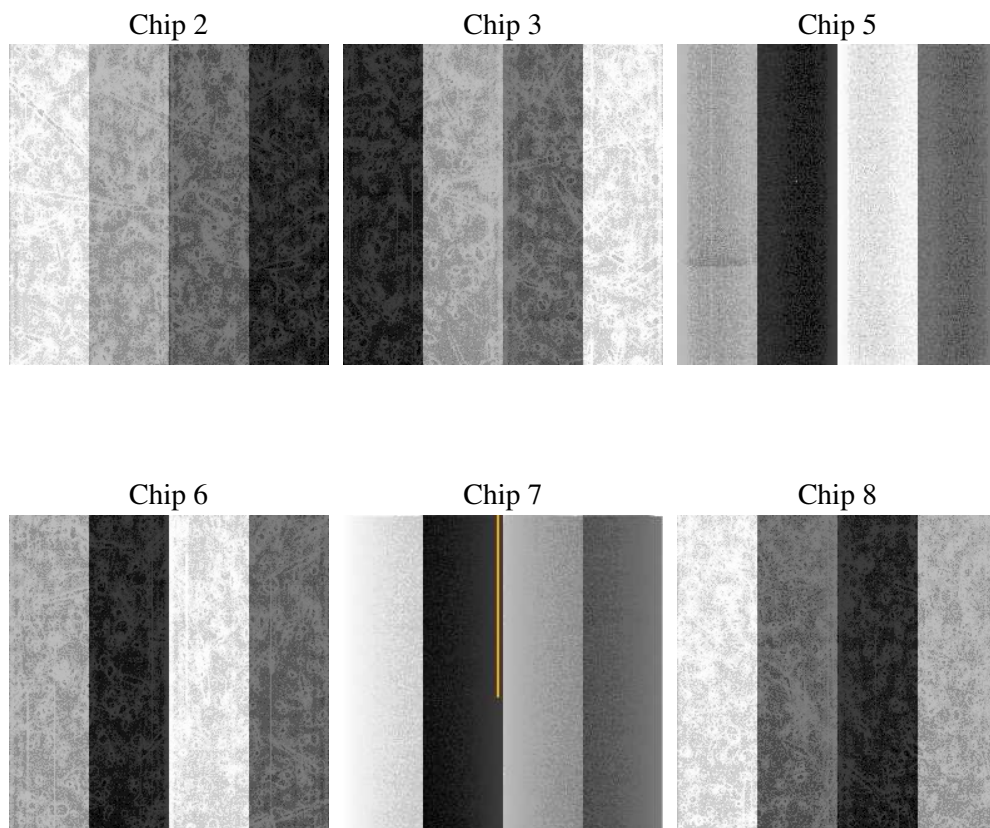
2 OBI

2.1 OBI

2.1.1 Images



2.1.2 Bias



2.1.3 Parameters

obi_num	0
ascdsver	7.6.7.1
caldsver	3.2.1
date	2006-03-08T12:37:43
revision	2

sched_exp_time	30000.000000
ontime	30134.931044281
ontime2	30131.690063983
ontime3	30134.931034386
ontime5	30134.931044281
ontime6	30134.931044281
ontime7	30134.931044281
ontime8	30134.931044281
l1events	1224584

2.1.4 Events

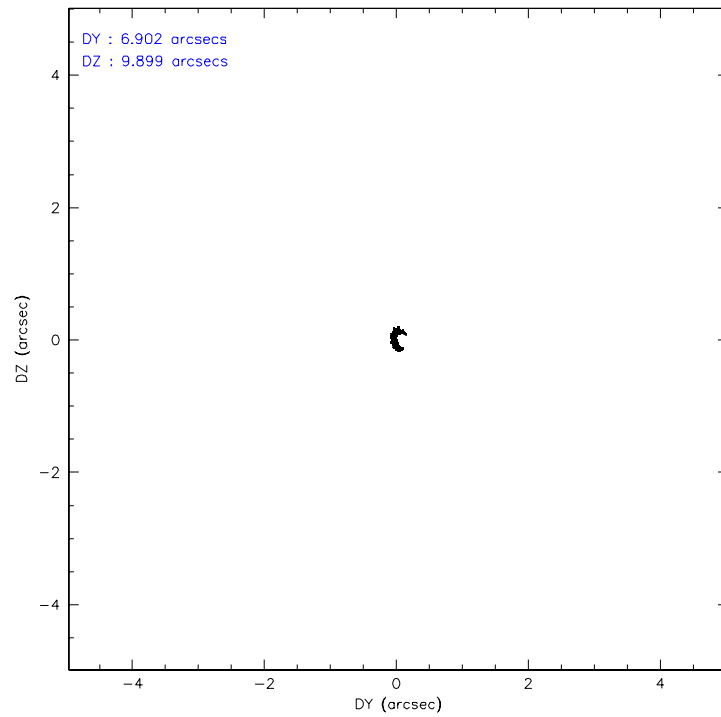
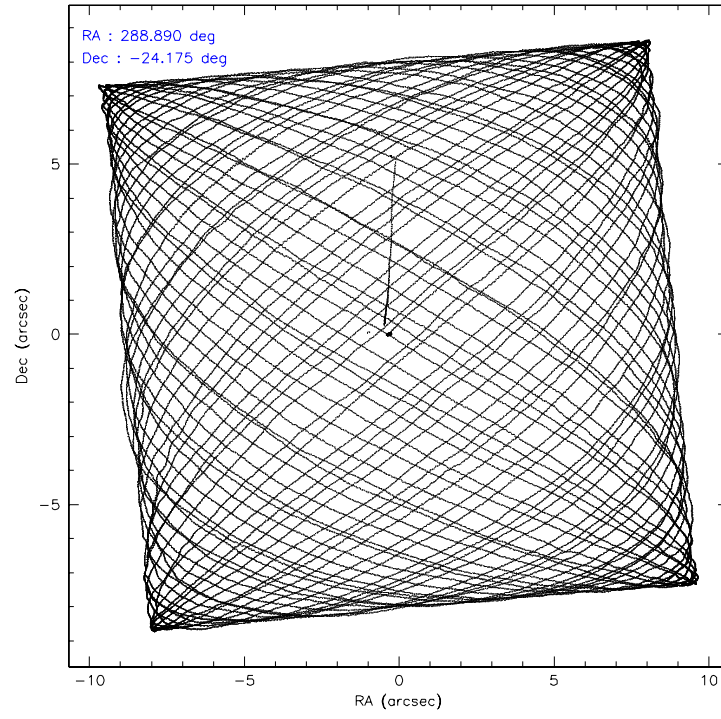
	ccd 2	ccd 3	ccd 5	ccd 6	ccd 7	ccd 8
level 1 events	188435	173679	251847	181504	204271	224848
rejected events	170290	156364	127350	161820	116062	172246
rejected %	90%	90%	50%	89%	56%	76%

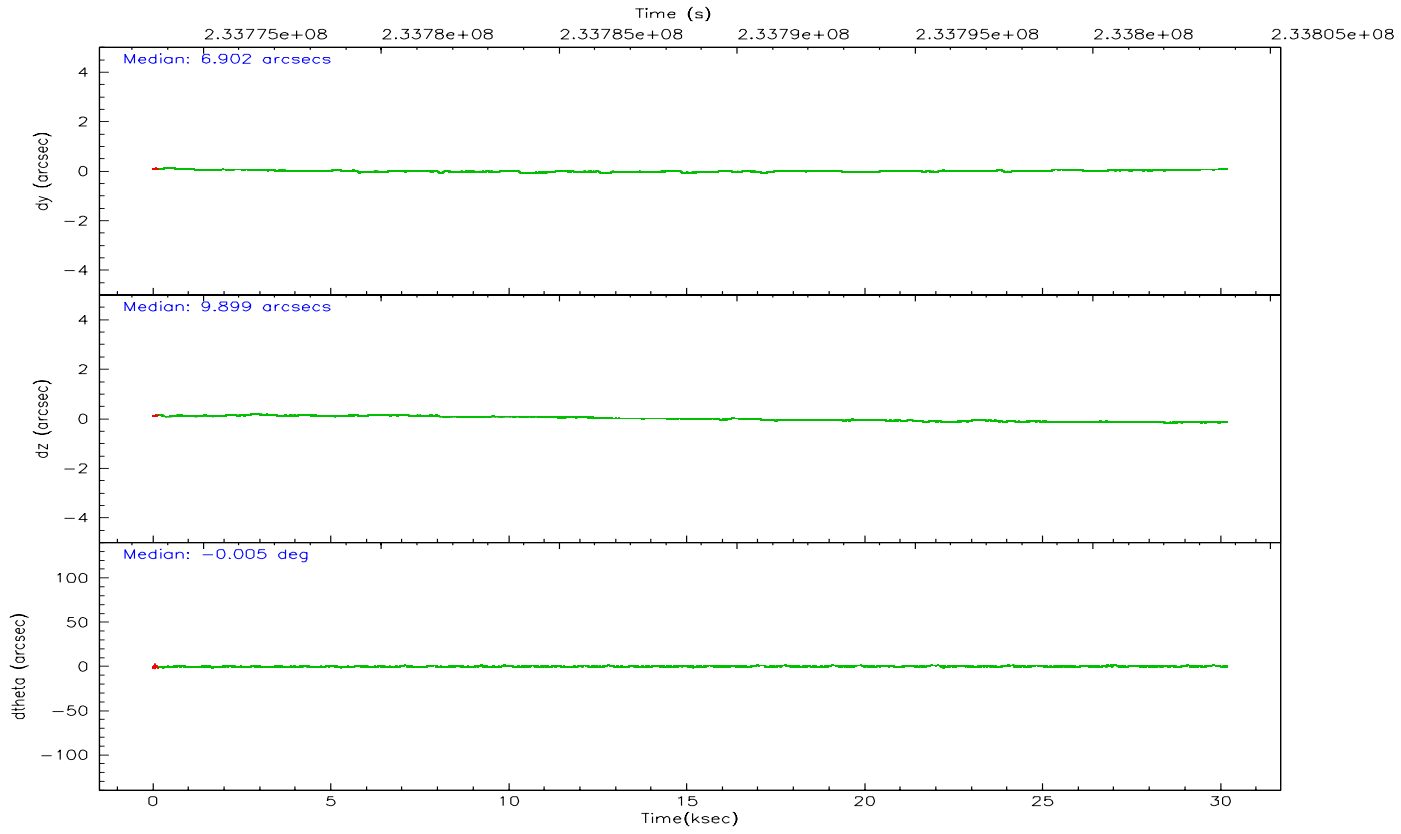
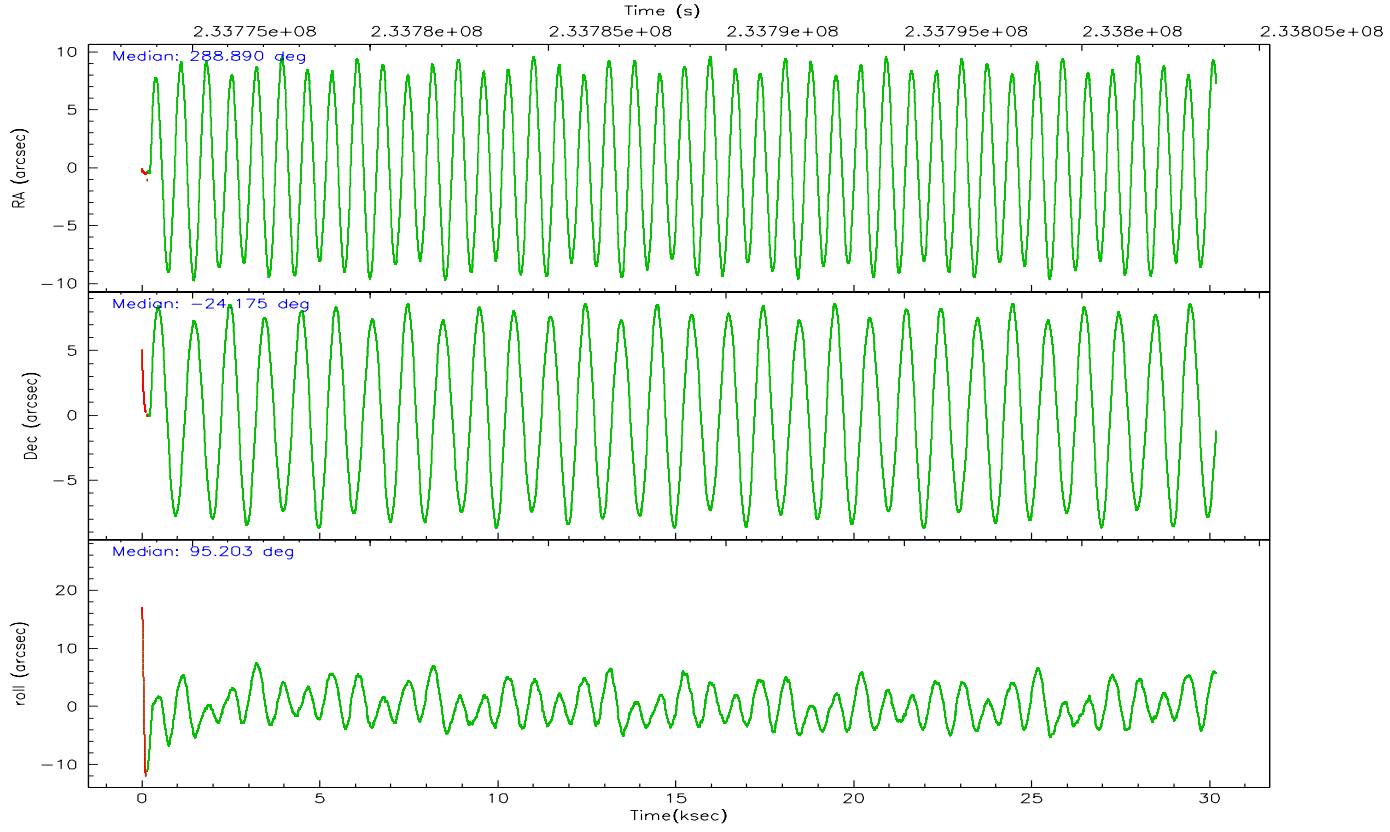
	ccd 2	ccd 3	ccd 5	ccd 6	ccd 7	ccd 8
grade 0 events	6741	6708	16094	7561	6766	16318
	3%	3%	6%	4%	3%	7%
grade 1 events	114	97	1285	88	131	174
	0%	0%	0%	0%	0%	0%
grade 2 events	4244	3509	37141	4046	22191	11744
	2%	2%	14%	2%	10%	5%
grade 3 events	2017	1975	3148	2053	5370	5648
	1%	1%	1%	1%	2%	2%
grade 4 events	1885	1887	2965	2067	5151	5176
	1%	1%	1%	1%	2%	2%
grade 5 events	6057	6950	12898	7433	15060	10390
	3%	4%	5%	4%	7%	4%
grade 6 events	3325	3288	65592	4046	49068	13899
	1%	1%	26%	2%	24%	6%
grade 7 events	164052	149265	112724	154210	100534	161499
	87%	85%	44%	84%	49%	71%

2.2 Compared Parameters

Parameter	Planned	Actual	Parameter	Planned	Actual
Instrument	ACIS	ACIS	Obspar format version number	6	6
Detector	ACIS-235678	ACIS-235678	Obspar file type	PREDICTED	ACTUAL
Grating	NONE	NONE	Obspar update status	NONE	UPDATED
Data mode	VFAINT	VFAINT	On-chip summing requested	N	N
Observation mode	POINTING	POINTING	Subarray requested	NONE	NONE
Pointing RA	288.907309	288.8897761657966	Alternating exposures requested	N	N
Pointing Dec	-24.197235	-24.17521935212113	Primary exposure time	0.000000	3.2
Pointing Roll	95.061100	95.21055839896356			
SIM focus pos (mm)	-0.684267	-0.6828225247311905			
SIM defocus (mm)	0	0.001444936568705701			
SIM translation stage pos (mm)	-190.132523	-190.1400660498719			
SIM translation stage offset (mm)	0	0.00754346686406393			
Phase constraints	Y	Y			
Phase period	3.092455	3.092455			
Phase epoch	52891.020000	52891.020000			
Phase start	0.310000	0.310000			
Phase end	0.430000	0.430000			
Phase start error	0.030000	0.030000			
Phase end error	0.030000	0.030000			
Observation start time	233773773.184000	233772726.73207			
Observation start date	2005-05-29T17:08:29	2005-05-29T16:52:06			
Observation end time	233803773.184000	233805240.24605			
Observation end date	2005-05-30T01:28:29	2005-05-30T01:54:00			
Read mode	TIMED	TIMED			

2.3 Aspect



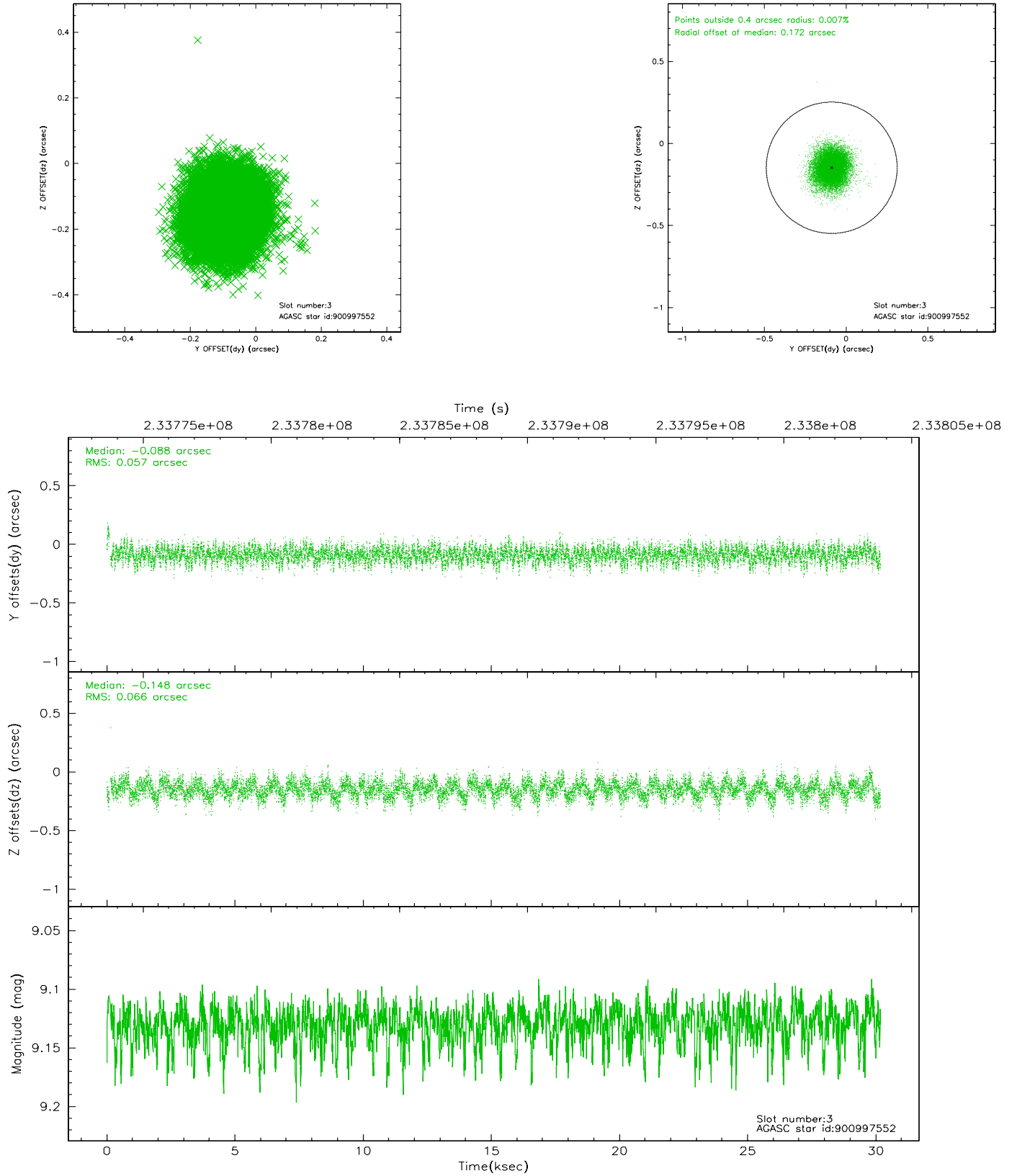


Slot Statistics

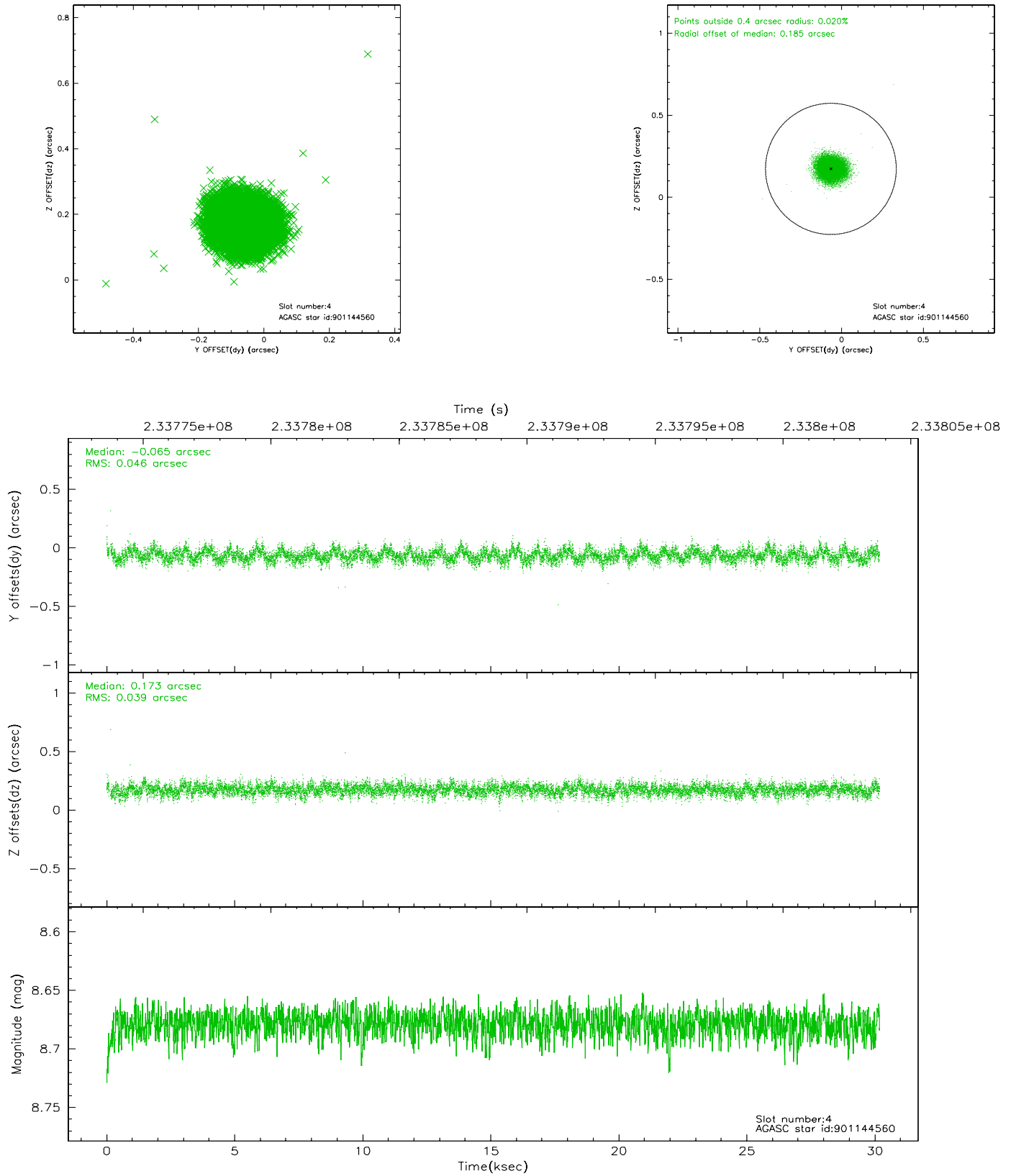
slot	status	id	mag	n_pts	med_dy	med_dz	dr1	dr2	ra	dec	mean_y	mean_z
0	FID	ACIS-S-2	7.10	7349	-0.047	-0.008	0.008	0.013	0.000000	0.000000	-759.66	-1731.17
1	FID	ACIS-S-4	7.20	7349	0.062	0.025	0.008	0.013	0.000000	0.000000	2153.65	177.33
2	FID	ACIS-S-5	7.24	7349	-0.046	-0.008	0.008	0.012	0.000000	0.000000	-1812.45	170.97
3	GUIDE	900997552	9.13	14690	-0.088	-0.148	0.093	0.149	288.312519	-24.029579	769.52	1895.31
4	GUIDE	901144560	8.68	14690	-0.065	0.173	0.064	0.103	289.333664	-23.842375	1147.02	-1510.31
5	GUIDE	901514880	8.92	14692	0.097	-0.167	0.076	0.121	288.396412	-24.524459	-1028.78	1770.66
6	GUIDE	901647096	9.15	14688	0.057	0.145	0.078	0.126	289.707413	-24.700499	-2042.56	-2446.08
7	MONITOR		0.00	0	0.000	0.000	0.000	0.000	0.000000	0.000000	0.00	0.00

2.4 Star Slots

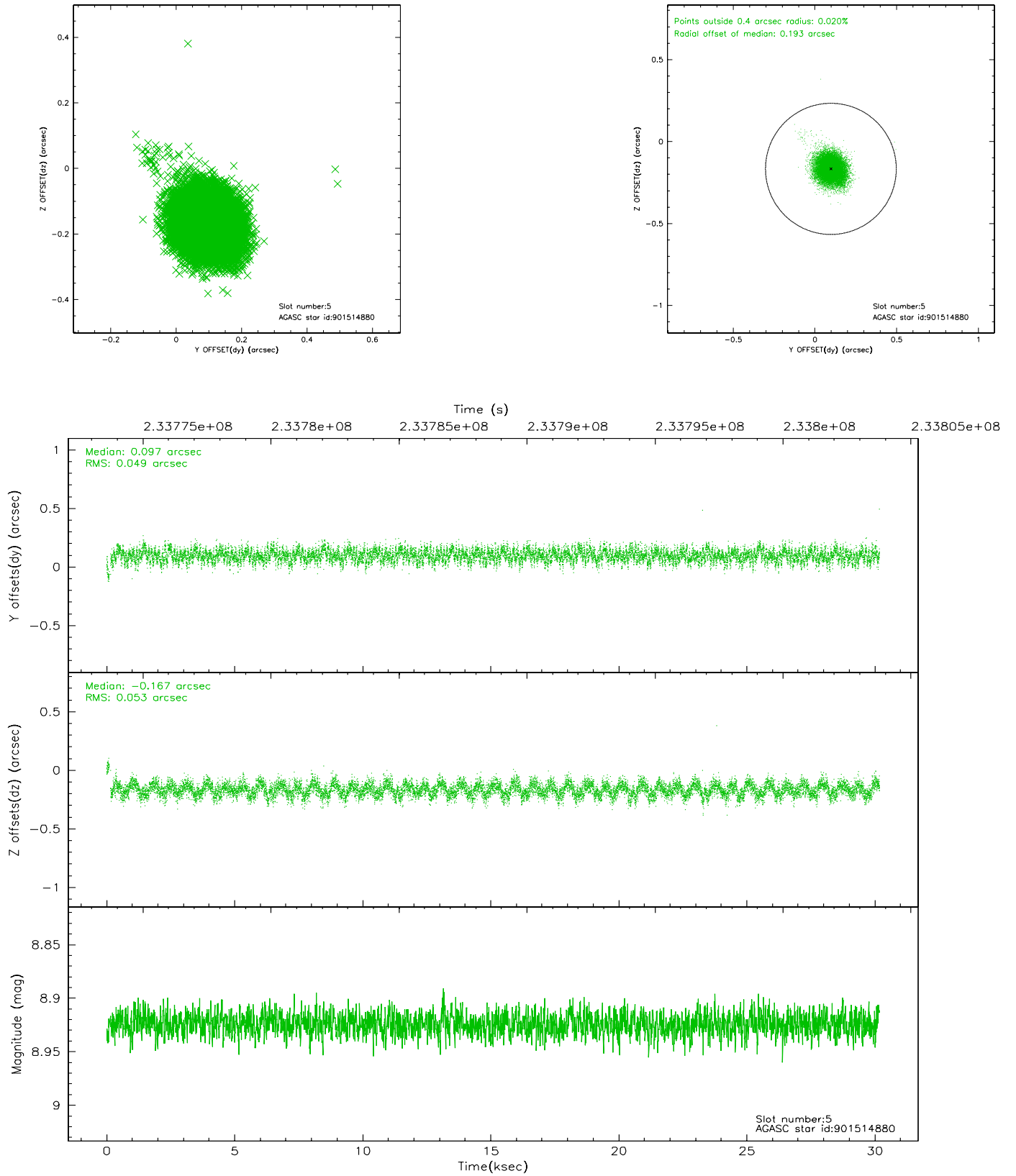
2.4.1 Slot 3



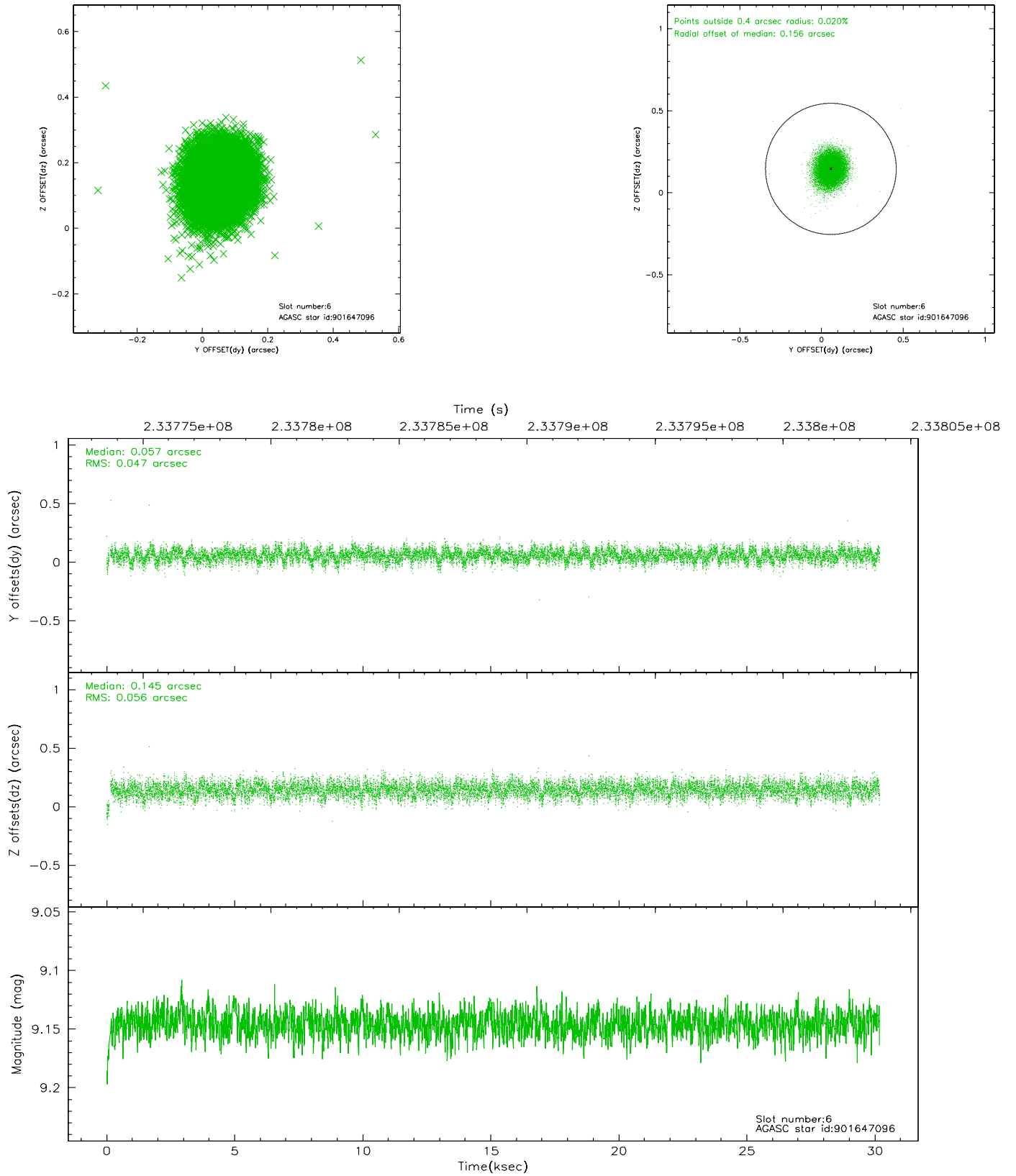
2.4.2 Slot 4



2.4.3 Slot 5

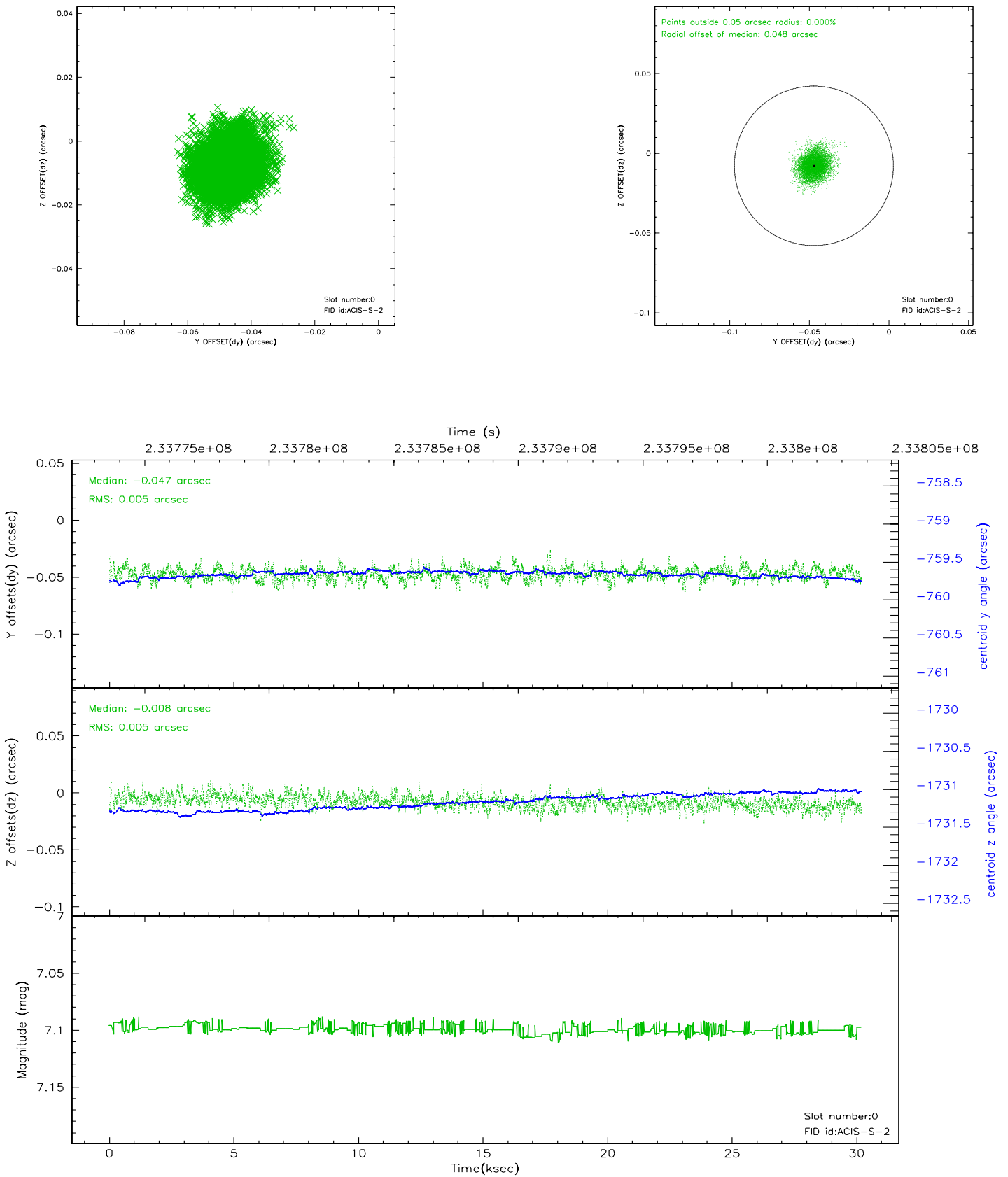


2.4.4 Slot 6

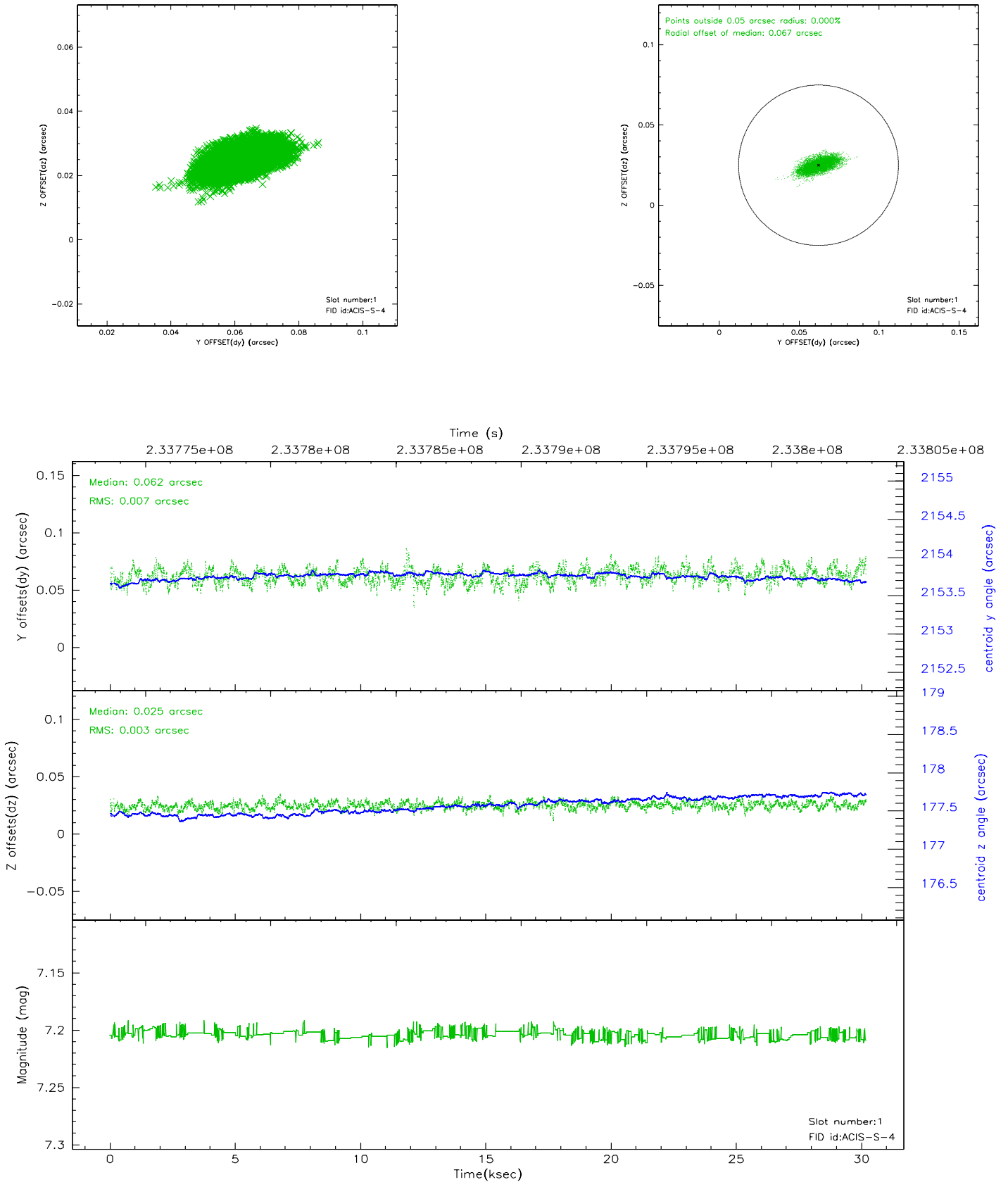


2.5 FID Slots

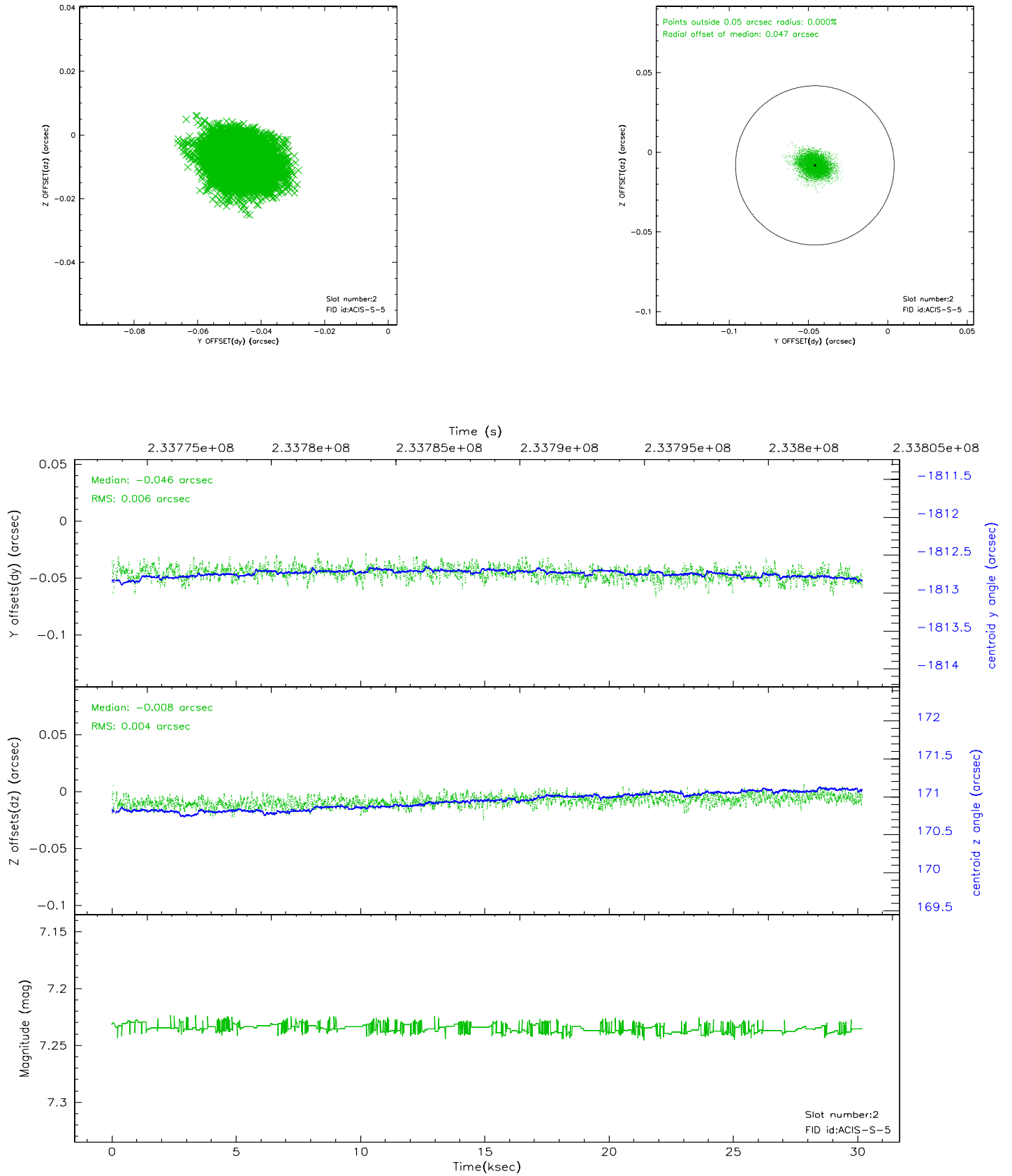
2.5.1 Slot 0



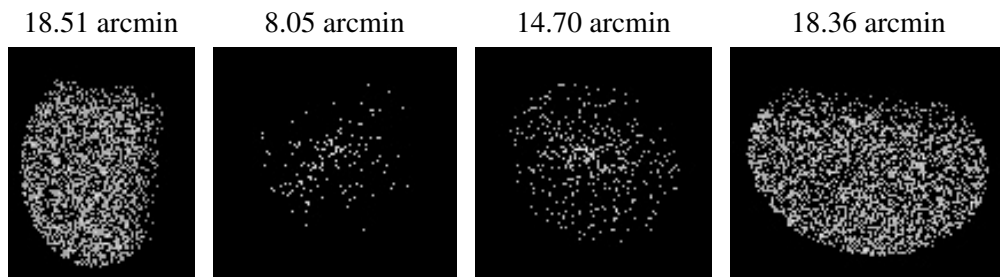
2.5.2 Slot 1



2.5.3 Slot 2



3 Point Sources



A Summary

A.1 Status

V&V Scientist	Beth Sundheim
V&V Date (YYYY-MM-DD)	2006.03.08
V&V Edition	1
V&V Disposition and Status	OK
V&V Charge Time	30.02559

A.2 Comments