

# V&V Reference Report

## L2 ASCDS Version : 8.4.5

Observation 60850 - L2 Version 3  
Chandra X-Ray Center

L2 Processing Date : Oct 22 2012

## Contents

<b>1</b>	<b>Front</b>	<b>2</b>
<b>2</b>	<b>OBI</b>	<b>3</b>
2.1	OBI . . . . .	3
2.1.1	Images . . . . .	3
2.1.2	Bias . . . . .	3
2.1.3	Parameters . . . . .	4
2.1.4	Events . . . . .	4
2.2	Compared Parameters . . . . .	5
2.3	Star Slots . . . . .	6
2.4	FID Slots . . . . .	6
<b>A</b>	<b>Summary</b>	<b>7</b>
A.1	Status . . . . .	7
A.2	Comments . . . . .	7

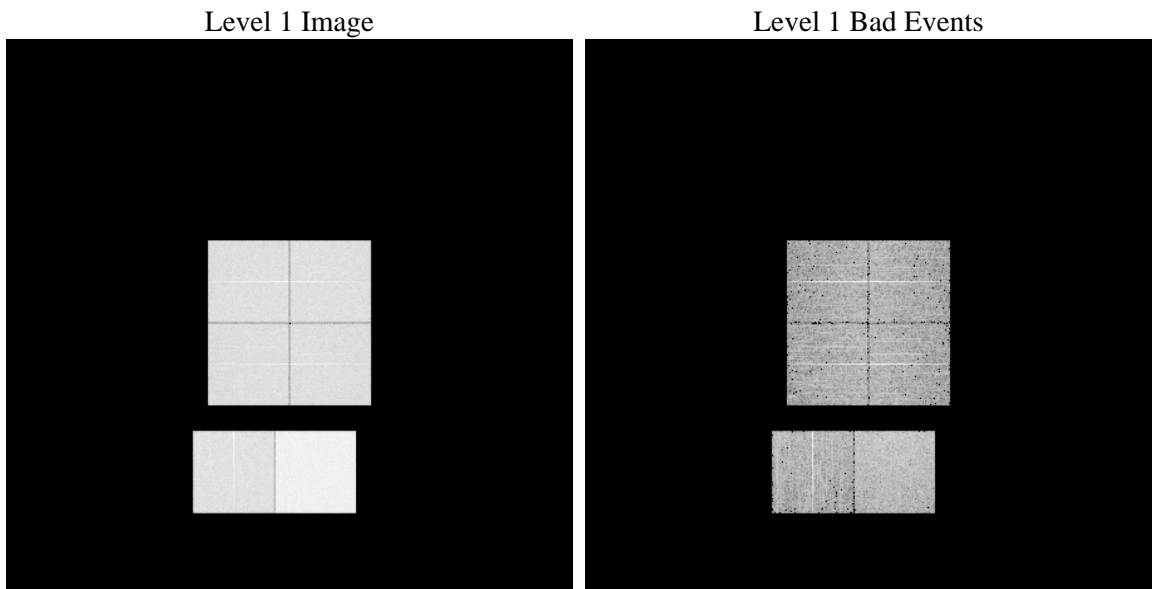
# 1 Front

seq_num	&#160	Sequence number
obs_id	60850	Observation id
title	ACIS-012367 diagnostics	Proposal title
observer	CHANDRA engineering request/realtime commanding	Principal investig
object	&#160	Source name
dtcycle	0	&#160
cycle	P	events from which exps? Prim/Second/Both
ra_targ	0.0	Observer's specified target RA [deg]
dec_targ	0.0	Observer's specified target Dec [deg]
ra_nom	228.59065898017	Nominal RA [deg]
dec_nom	-21.872773590466	Nominal Dec [deg]
roll_nom	74.794574526507	Nominal Roll [deg]
revision	3	Processing version of data
ontime	8463.9999684691	Sum of GTIs [s]
livetime	8356.8237044595	Livetime [s]
ontime0	4610.4880428016	Sum of GTIs [s]
ontime1	4662.3438552618	Sum of GTIs [s]
ontime2	4357.6902615726	Sum of GTIs [s]
ontime3	4396.5819648802	Sum of GTIs [s]
ontime6	4749.8506999612	Sum of GTIs [s]
ontime7	8463.9999684691	Sum of GTIs [s]
l2events	1284563	Number of level 2 events

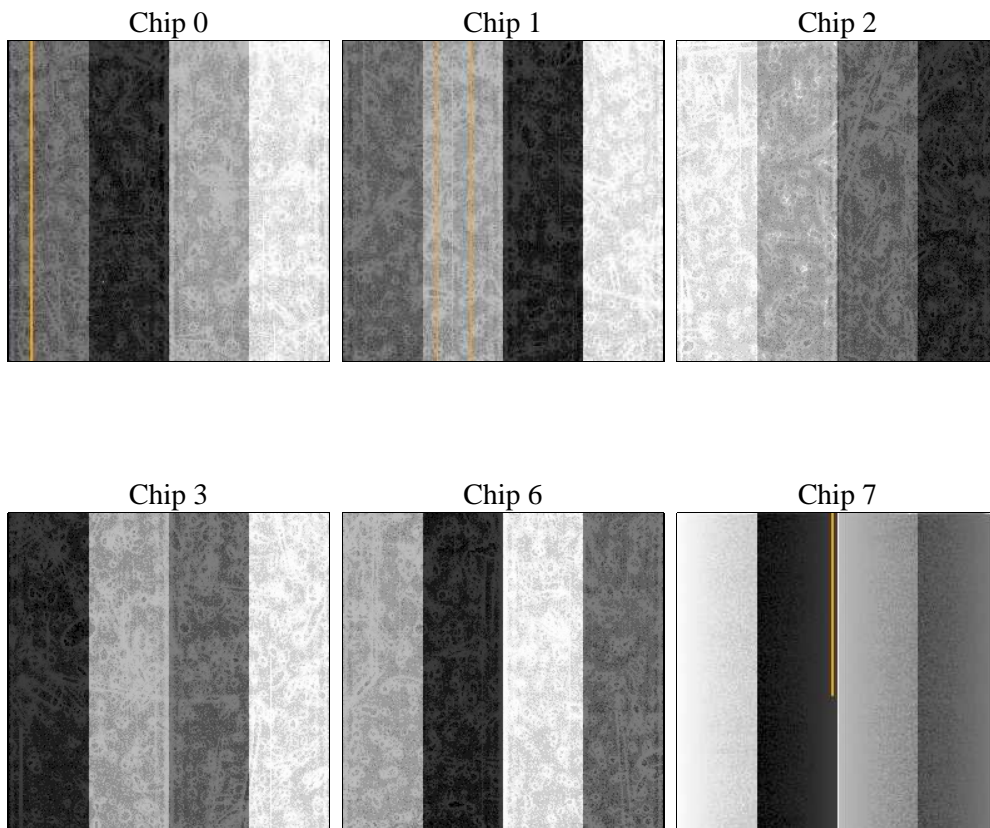
## 2 OBI

### 2.1 OBI

#### 2.1.1 Images



#### 2.1.2 Bias



### 2.1.3 Parameters

obi_num	0	Obi number	sched_exp_time	0.0	[s] Scheduled observation exposure time
ascdsver	8.4.5	Processing system revision	ontime	8463.9999684691	Sum of GTIs [s]
caldbver	4.5.2	&#160	ontime0	4610.4880428016	Sum of GTIs [s]
date	2012-10-22T10:39:19	Date and time of file creation	ontime1	4662.3438552618	Sum of GTIs [s]
revision	3	Processing version of data	ontime2	4357.6902615726	Sum of GTIs [s]
			ontime3	4396.5819648802	Sum of GTIs [s]
			ontime6	4749.8506999612	Sum of GTIs [s]
			ontime7	8463.9999684691	Sum of GTIs [s]
			l1events	1546284	Number of level 1 events

### 2.1.4 Events

	ccd 0	ccd 1	ccd 2	ccd 3	ccd 6	ccd 7		ccd 0	ccd 1	ccd 2	ccd 3	ccd 6	ccd 7
level 1 events	221932	225534	215035	217504	243612	422667	grade 0 events	106122	106901	102991	104100	113634	93781
rejected events	29357	30641	31502	31552	34028	46143		47%	47%	47%	47%	46%	22%
rejected %	13%	13%	14%	14%	13%	10%	grade 1 events	589	518	676	651	540	257
								0%	0%	0%	0%	0%	0%
							grade 2 events	33694	34523	31196	31850	36453	82972
								15%	15%	14%	14%	14%	19%
							grade 3 events	12452	12572	11857	12205	13074	38499
								5%	5%	5%	5%	5%	9%
							grade 4 events	12488	12437	11758	12093	13041	38098
								5%	5%	5%	5%	5%	9%
							grade 5 events	2121	2192	1960	2125	2312	8957
								0%	0%	0%	0%	0%	2%
							grade 6 events	27819	28460	25731	25704	33382	123174
								12%	12%	11%	11%	13%	29%
							grade 7 events	26647	27931	28866	28776	31176	36929
								12%	12%	13%	13%	12%	8%

## 2.2 Compared Parameters

Parameter	Planned	Actual
Instrument	ACIS	ACIS
Detector	ACIS-012367	ACIS-012367
Grating	NONE	NONE
Data mode	FAINT	FAINT
Observation mode	SECONDARY	SECONDARY
[deg] Pointing RA	0	228.5906589801712
[deg] Pointing Dec	0	-21.87277359046624
[deg] Pointing Roll	0.0	74.79457452650681
[mm] SIM focus pos	-0.782348	-0.6828225247311905
[mm] SIM defocus	0	0.8505141146731063
[mm] SIM translation stage pos	-233.592463	250.4635187648994
[mm] SIM translation stage offset	0	-0.007540371344731511
[s] Observation start time (MET)	161319290.140849	161319289.11611
Observation start date	2003-02-11T02:54:50	2003-02-11T02:54:49
[s] Observation end time (MET)	161342512.541826	161342511.51709
Observation end date	2003-02-11T09:21:53	2003-02-11T09:21:51
Read mode	TIMED	TIMED

Parameter	Planned	Actual
Obspar format version number	7	7
Obspar file type	PREDICTED	ACTUAL
Obspar update status	NONE	UPDATED
On-chip summing requested	N	N
Subarray requested	NONE	NONE
Alternating exposures requested	N	N
[s] Primary exposure time	0.000000	3.2

## 2.3 Star Slots

## 2.4 FID Slots

## A Summary

### A.1 Status

V&V Scientist	Beth Sundheim
V&V Date (YYYY-MM-DD)	2012.11.20
V&V Edition	1
V&V Disposition and Status	OK
V&V Charge Time	8.4639999684691

### A.2 Comments