

V&V Reference Report

L2 ASCDS Version : 7.6.7

Observation 6070 - L2 Version 002
Chandra X-Ray Center

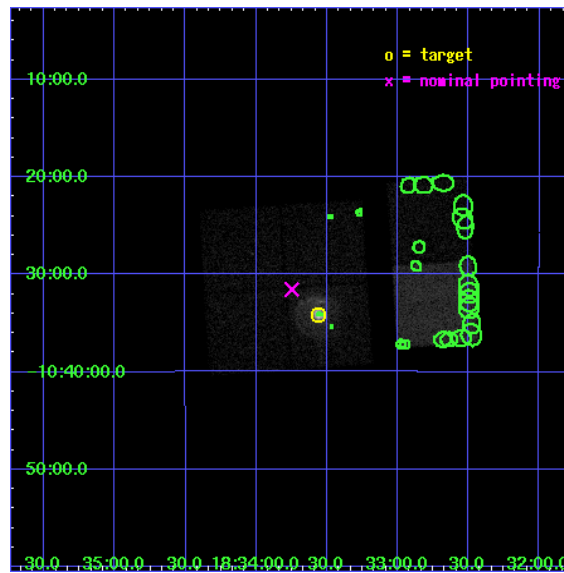
L2 Processing Date: Feb 25 2006

Contents

1	Front	2
2	OBI	3
2.1	OBI	3
2.1.1	Images	3
2.1.2	Bias	3
2.1.3	Parameters	4
2.1.4	Events	4
2.2	Compared Parameters	5
2.3	Aspect	6
2.4	Star Slots	9
2.4.1	Slot 3	9
2.4.2	Slot 4	10
2.4.3	Slot 5	11
2.4.4	Slot 6	12
2.4.5	Slot 7	13
2.5	FID Slots	14
2.5.1	Slot 0	14
2.5.2	Slot 1	15
2.5.3	Slot 2	16
3	Point Sources	17
A	Summary	18
A.1	Status	18
A.2	Comments	18

1 Front

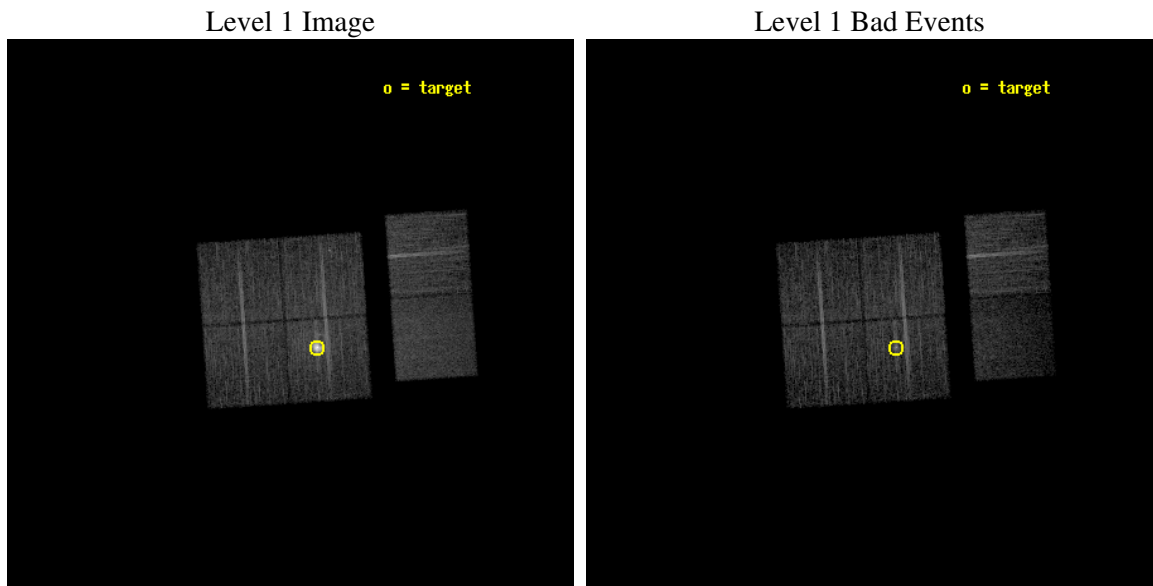
seq_num	590397
obs_id	6070
title	AO6A Observations of the Standard Candles Cas A and G21.5-09
observer	Dr. CXC Calibration
object	G21.5-09[I3,-120,-2.5,2.5,0]
dtcycle	0
cycle	P
ra_targ	278.389583
dec_targ	-10.568528
ra_nom	278.43698332311
dec_nom	-10.52577101077
roll_nom	86.174653016031
revision	2
ontime	9555.1999644041
livetime	9434.2062690041
ontime0	9555.1999644041
ontime1	9555.1999644041
ontime2	9555.1999644041
ontime3	9555.1999644041
ontime6	9555.1999644041
ontime7	9555.1999644041
l2events	75787



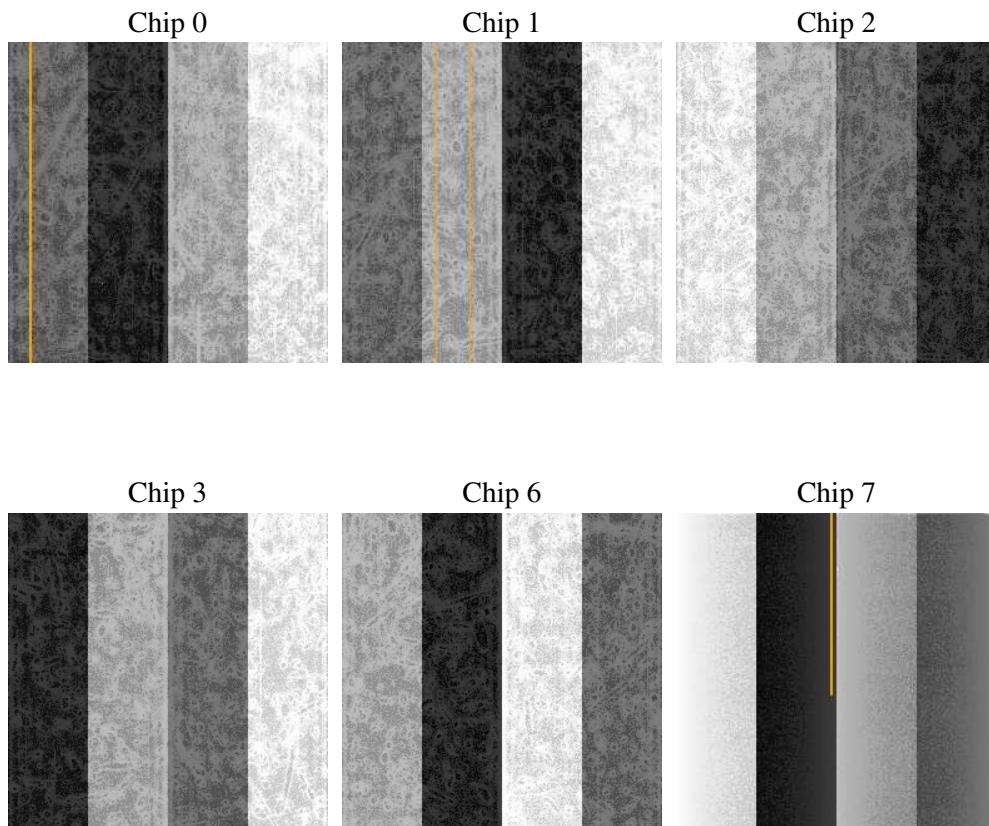
2 OBI

2.1 OBI

2.1.1 Images



2.1.2 Bias



2.1.3 Parameters

obi_num	0
ascdsver	7.6.7
caldsver	3.2.1
date	2006-02-25T08:41:28
revision	2

sched_exp_time	9800.000000
ontime	9560.9530228674
ontime0	9560.9529929757
ontime1	9560.9530128837
ontime2	9560.9530128837
ontime3	9560.9530228674
ontime6	9560.9530427754
ontime7	9560.9530128837
l1events	360681

2.1.4 Events

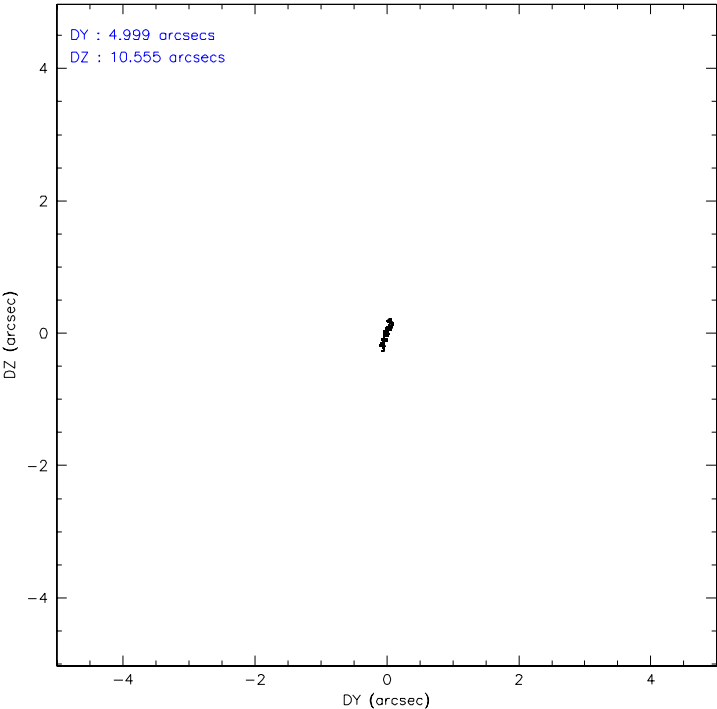
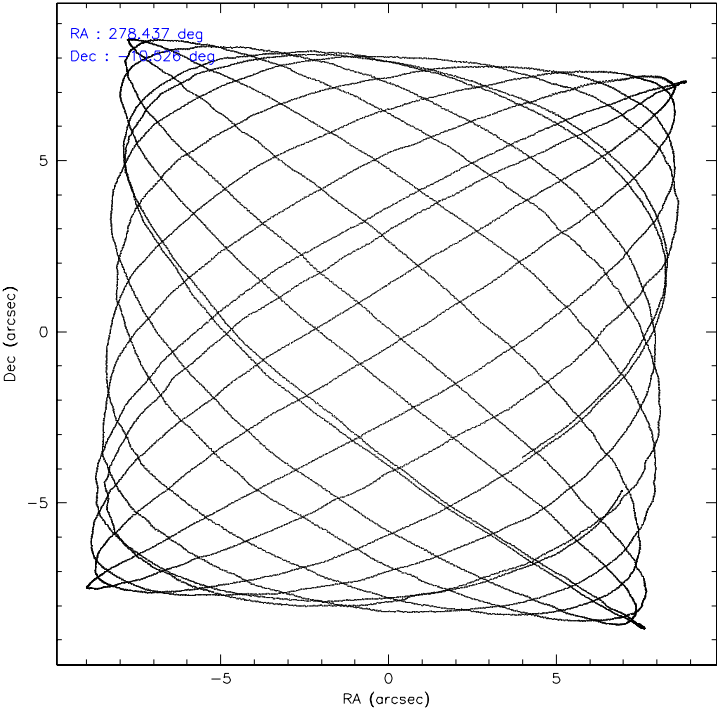
	ccd 0	ccd 1	ccd 2	ccd 3	ccd 6	ccd 7
level 1 events	53397	51830	59576	84062	58479	53337
rejected events	47609	45667	52932	49946	52477	28863
rejected %	89%	88%	88%	59%	89%	54%

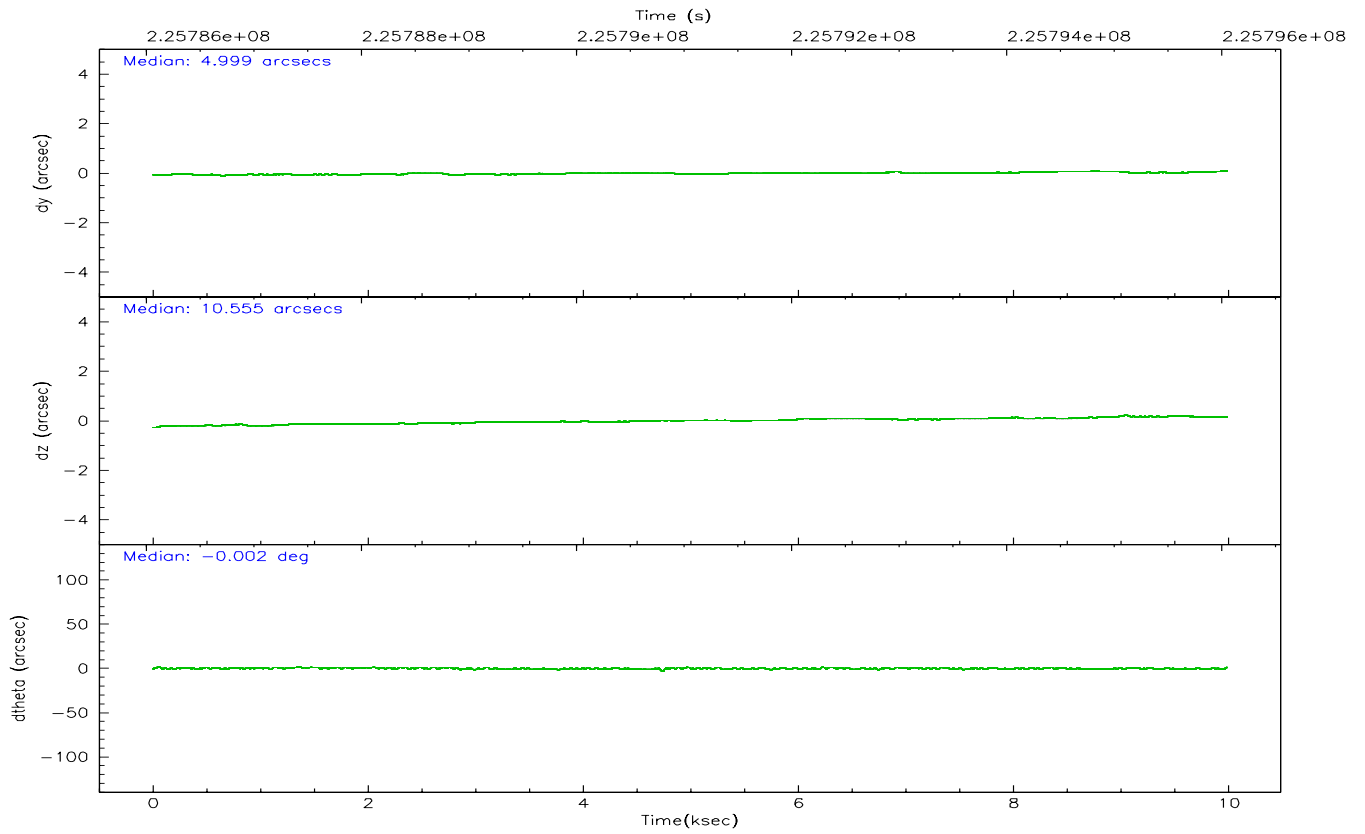
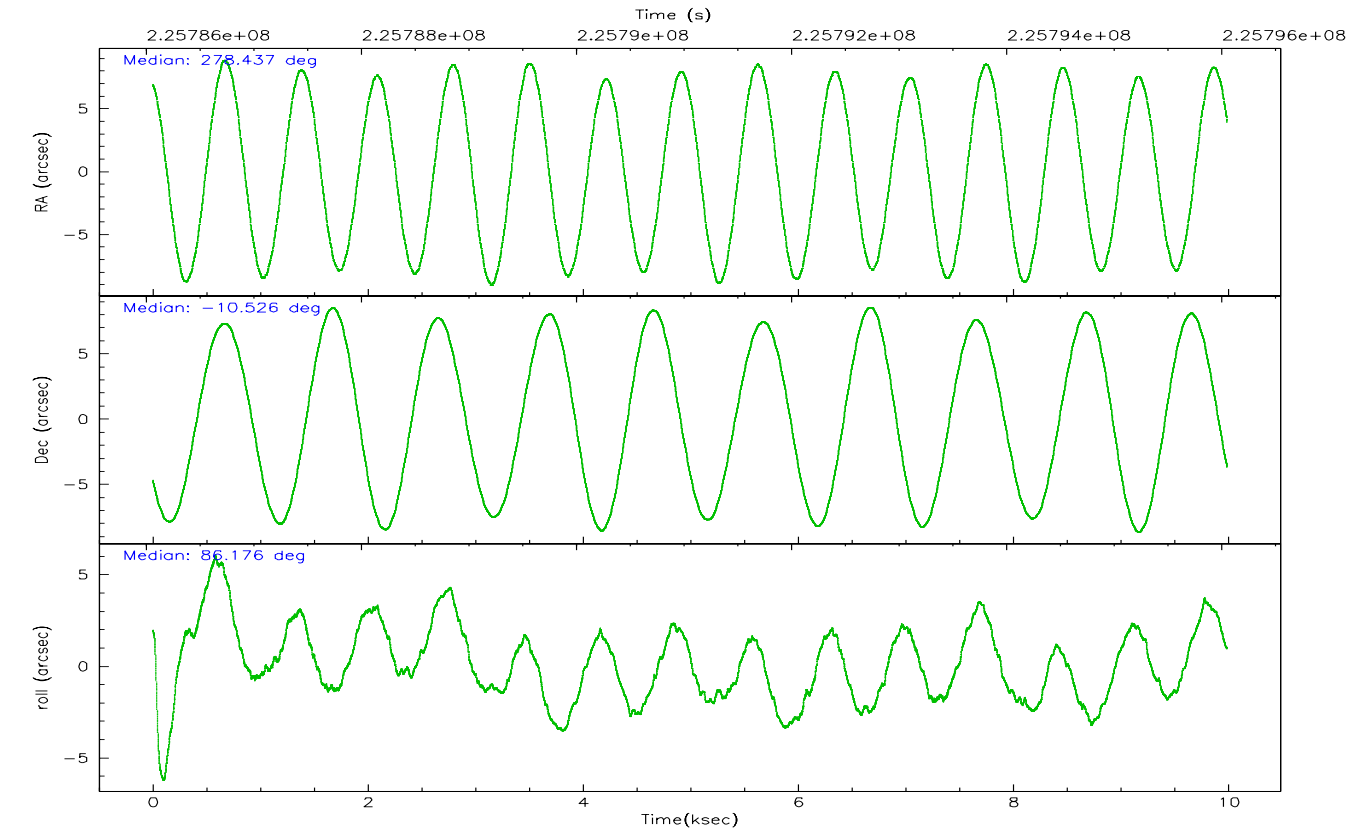
	ccd 0	ccd 1	ccd 2	ccd 3	ccd 6	ccd 7
grade 0 events	2149	2258	2992	23343	2315	1634
	4%	4%	5%	27%	3%	3%
grade 1 events	25	25	35	233	33	36
	0%	0%	0%	0%	0%	0%
grade 2 events	1375	1339	1418	4815	1224	6438
	2%	2%	2%	5%	2%	12%
grade 3 events	652	700	681	1851	657	1509
	1%	1%	1%	2%	1%	2%
grade 4 events	532	682	586	1844	660	1464
	0%	1%	0%	2%	1%	2%
grade 5 events	1757	1886	1608	2057	1897	4173
	3%	3%	2%	2%	3%	7%
grade 6 events	1082	1185	970	2279	1149	13457
	2%	2%	1%	2%	1%	25%
grade 7 events	45825	43755	51286	47640	50544	24626
	85%	84%	86%	56%	86%	46%

2.2 Compared Parameters

Parameter	Planned	Actual	Parameter	Planned	Actual
Instrument	ACIS	ACIS	Obspar format version number	6	6
Detector	ACIS-012367	ACIS-012367	Obspar file type	PREDICTED	ACTUAL
Grating	NONE	NONE	Obspar update status	NONE	UPDATED
Data mode	VFAINT	VFAINT	On-chip summing requested	N	N
Observation mode	POINTING	POINTING	Subarray requested	NONE	NONE
Pointing RA	278.449364	278.4369833231099	Alternating exposures requested	N	N
Pointing Dec	-10.550282	-10.52577101076967	Primary exposure time	0.000000	3.2
Pointing Roll	85.968234	86.17465301603052			
Window start time	225331264.184000	225331264.184000			
Window stop time	228614464.184000	228614464.184000			
SIM focus pos (mm)	-0.782348	-0.7809083437167272			
SIM defocus (mm)	0	0.001439871863259334			
SIM translation stage pos (mm)	-233.592463	-233.5874344608287			
SIM translation stage offset (mm)	0	-0.005018542100998502			
Observation start time	225786247.184000	225785871.0191			
Observation start date	2005-02-26T06:23:03	2005-02-26T06:17:51			
Observation end time	225796047.184000	225796196.86957			
Observation end date	2005-02-26T09:06:23	2005-02-26T09:09:56			
Read mode	TIMED	TIMED			

2.3 Aspect



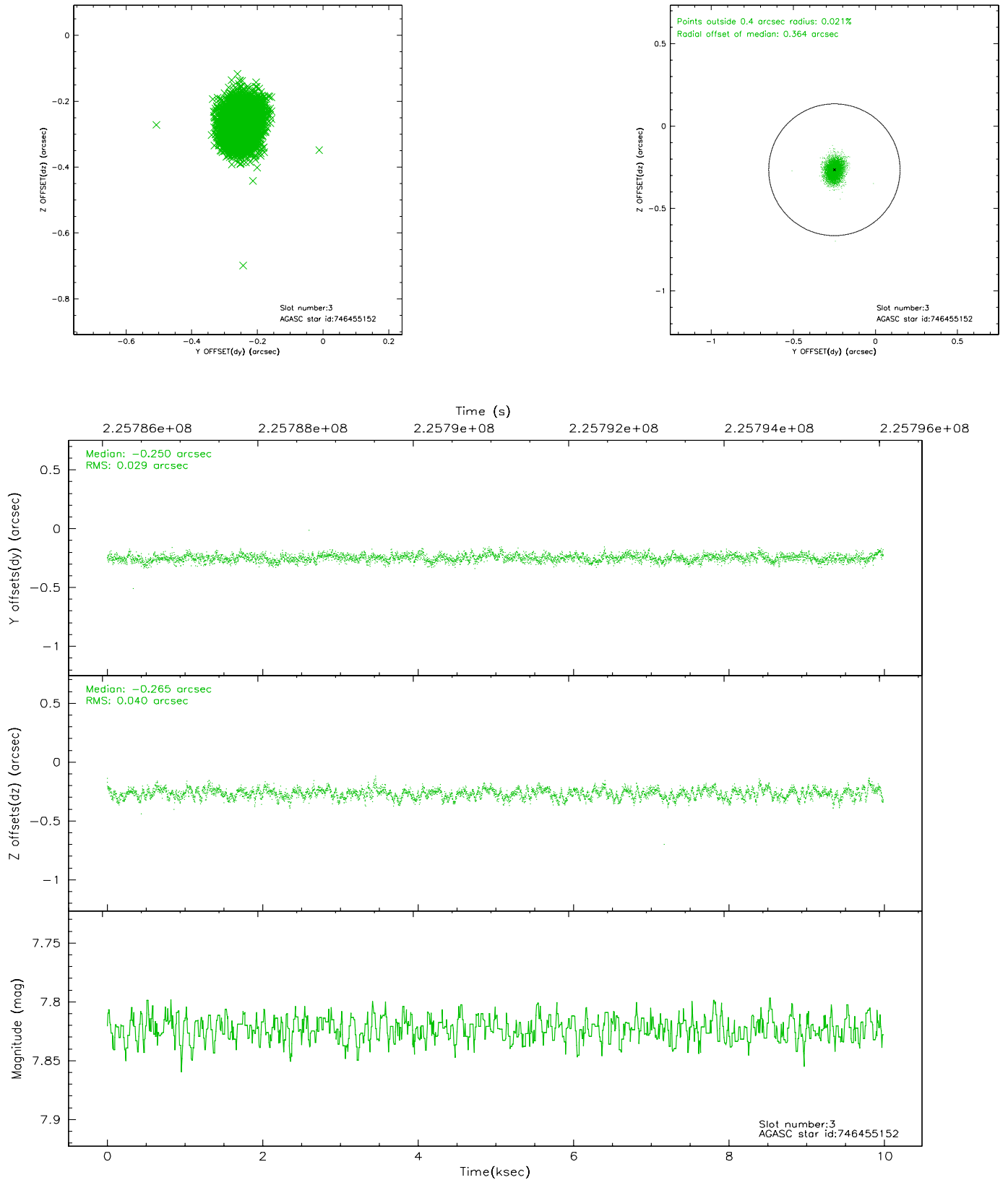


Slot Statistics

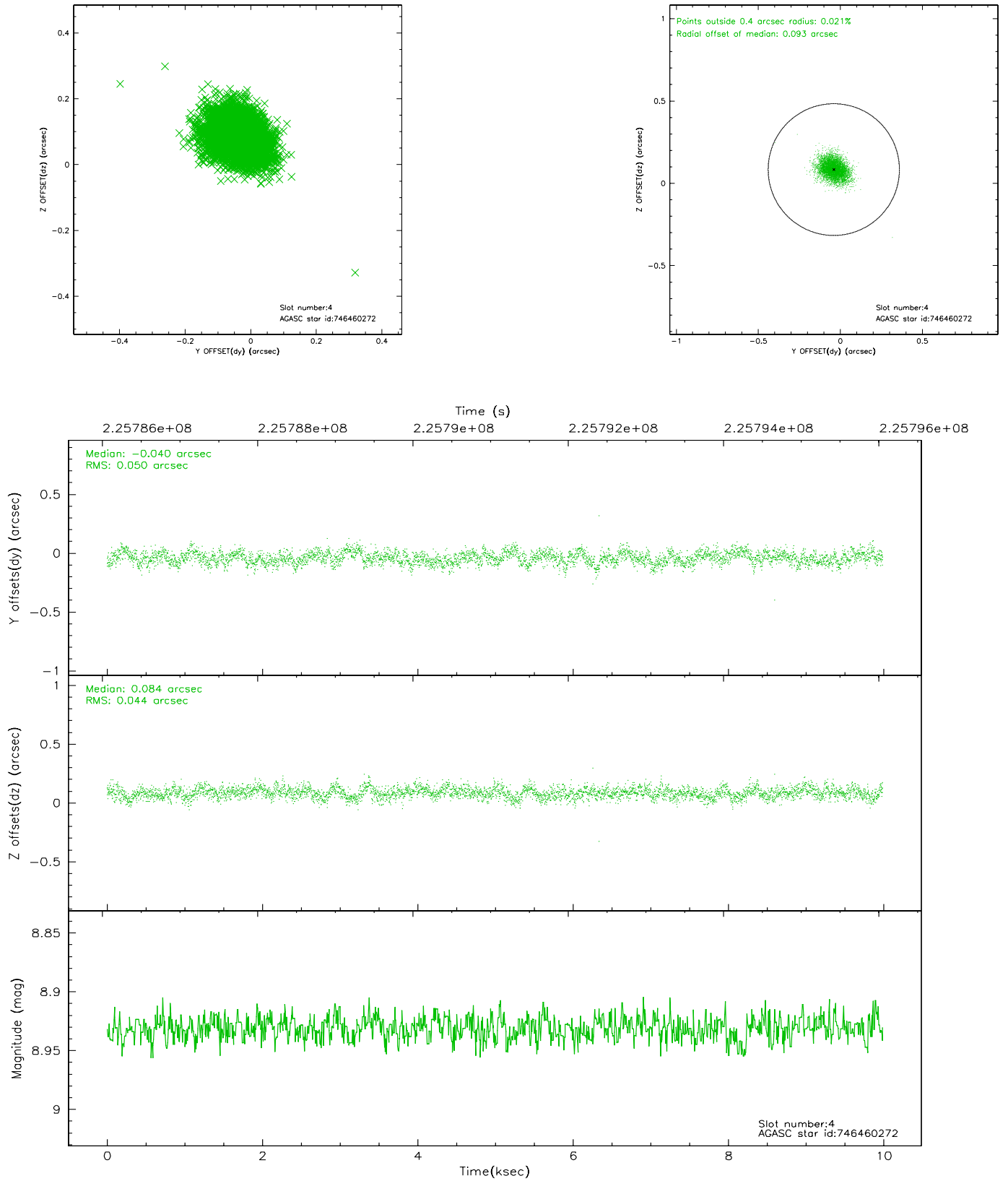
slot	status	id	mag	n_pts	med_dy	med_dz	dr1	dr2	ra	dec	mean_y	mean_z
0	FID	ACIS-I-1	7.24	2436	-0.000	-0.006	0.014	0.026	0.000000	0.000000	934.74	-834.04
1	FID	ACIS-I-4	7.16	2436	0.037	0.028	0.012	0.021	0.000000	0.000000	2155.13	1065.52
2	FID	ACIS-I-5	7.22	2436	-0.136	0.049	0.009	0.015	0.000000	0.000000	-1812.70	1064.01
3	GUIDE	746455152	7.82	4871	-0.250	-0.265	0.052	0.085	278.447893	-9.976732	2059.57	150.28
4	GUIDE	746460272	8.93	4871	-0.040	0.084	0.069	0.112	278.847488	-10.152127	1529.01	-1306.34
5	GUIDE	746460328	9.83	4869	-0.044	0.045	0.126	0.204	278.603974	-9.898096	2380.84	-381.94
6	GUIDE	746462392	8.53	4871	0.194	0.172	0.087	0.145	279.038421	-10.890715	-1077.92	-2164.02
7	GUIDE	746462456	8.39	4870	0.137	-0.024	0.058	0.093	278.652171	-10.530173	122.18	-711.43

2.4 Star Slots

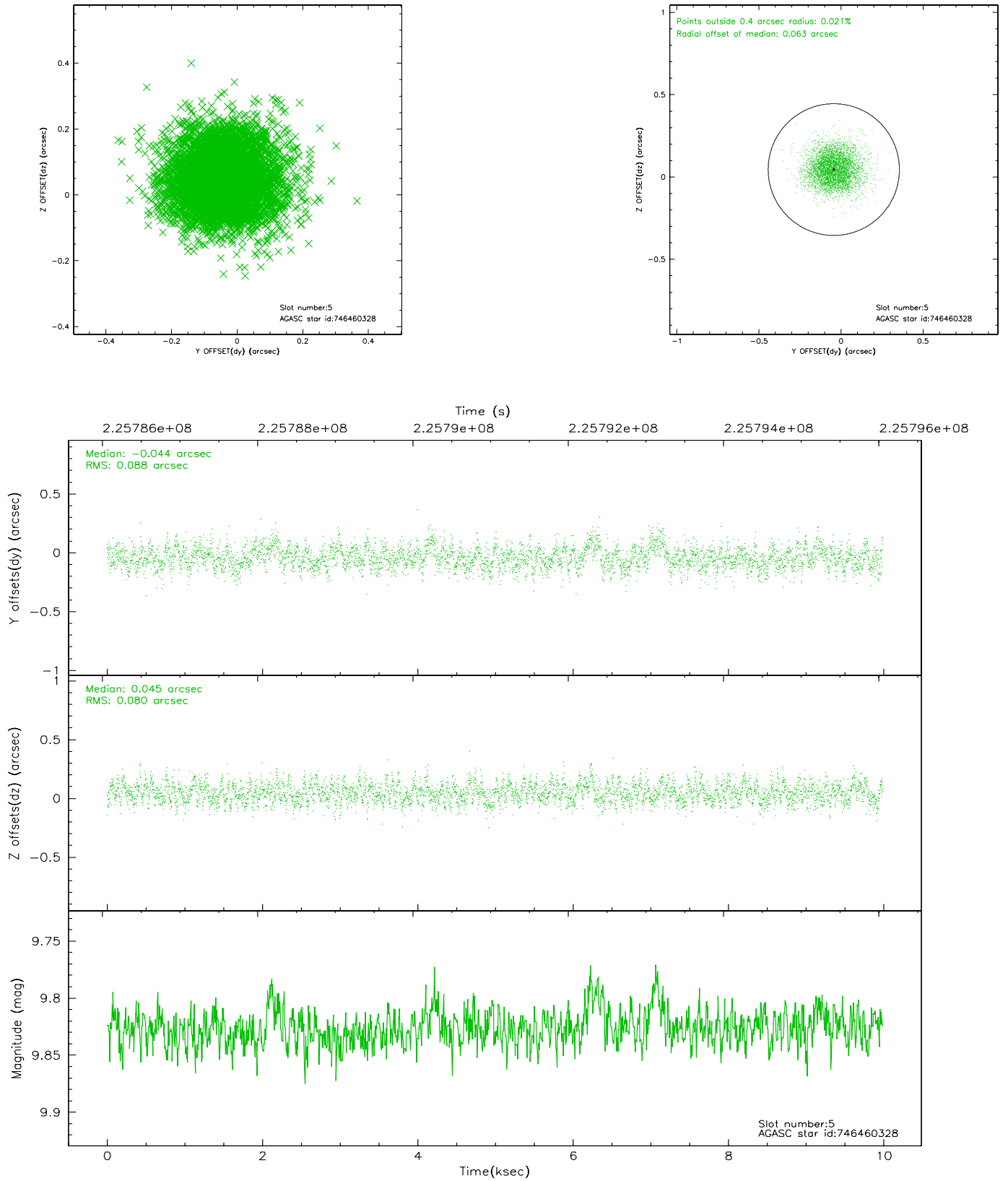
2.4.1 Slot 3



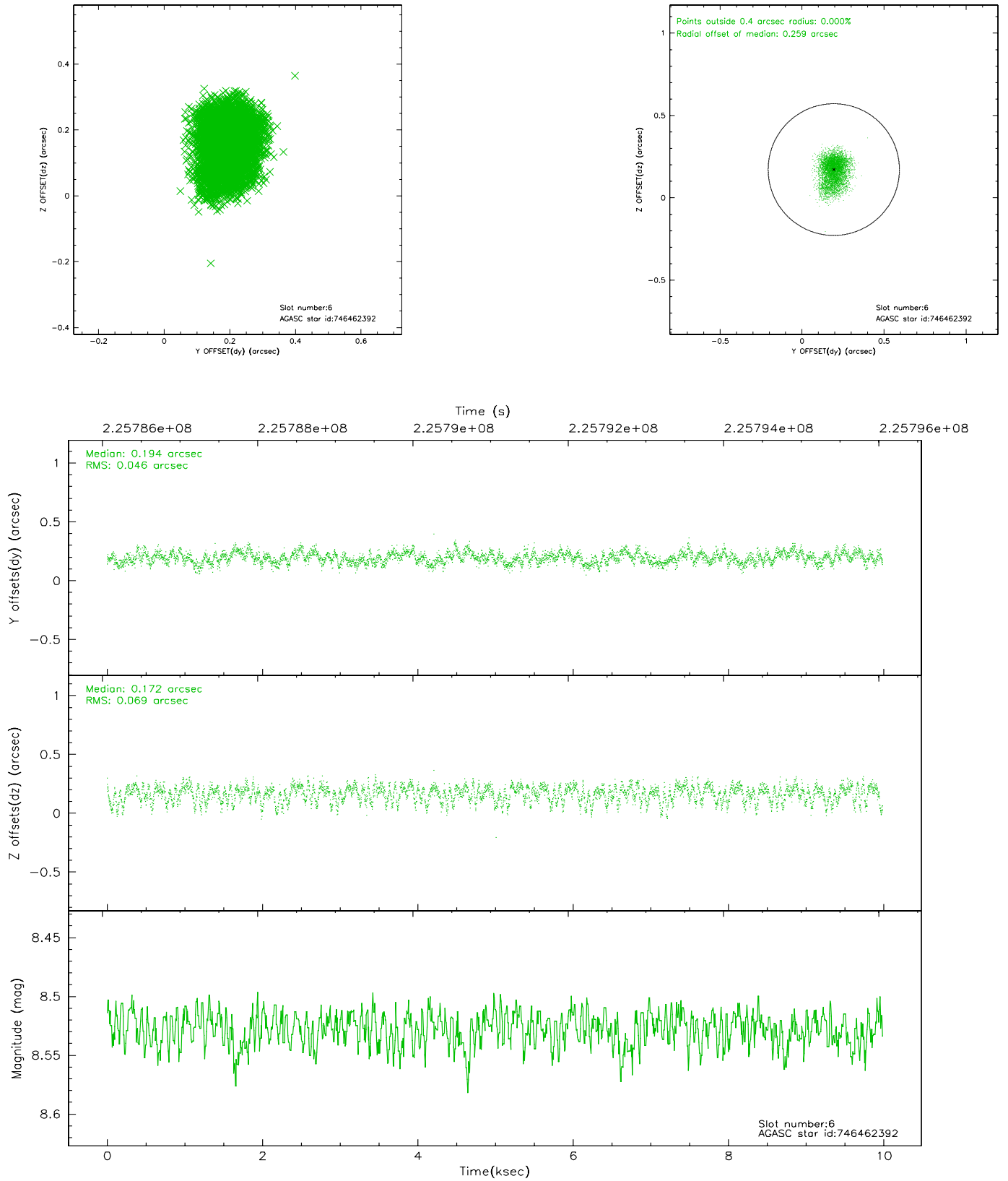
2.4.2 Slot 4



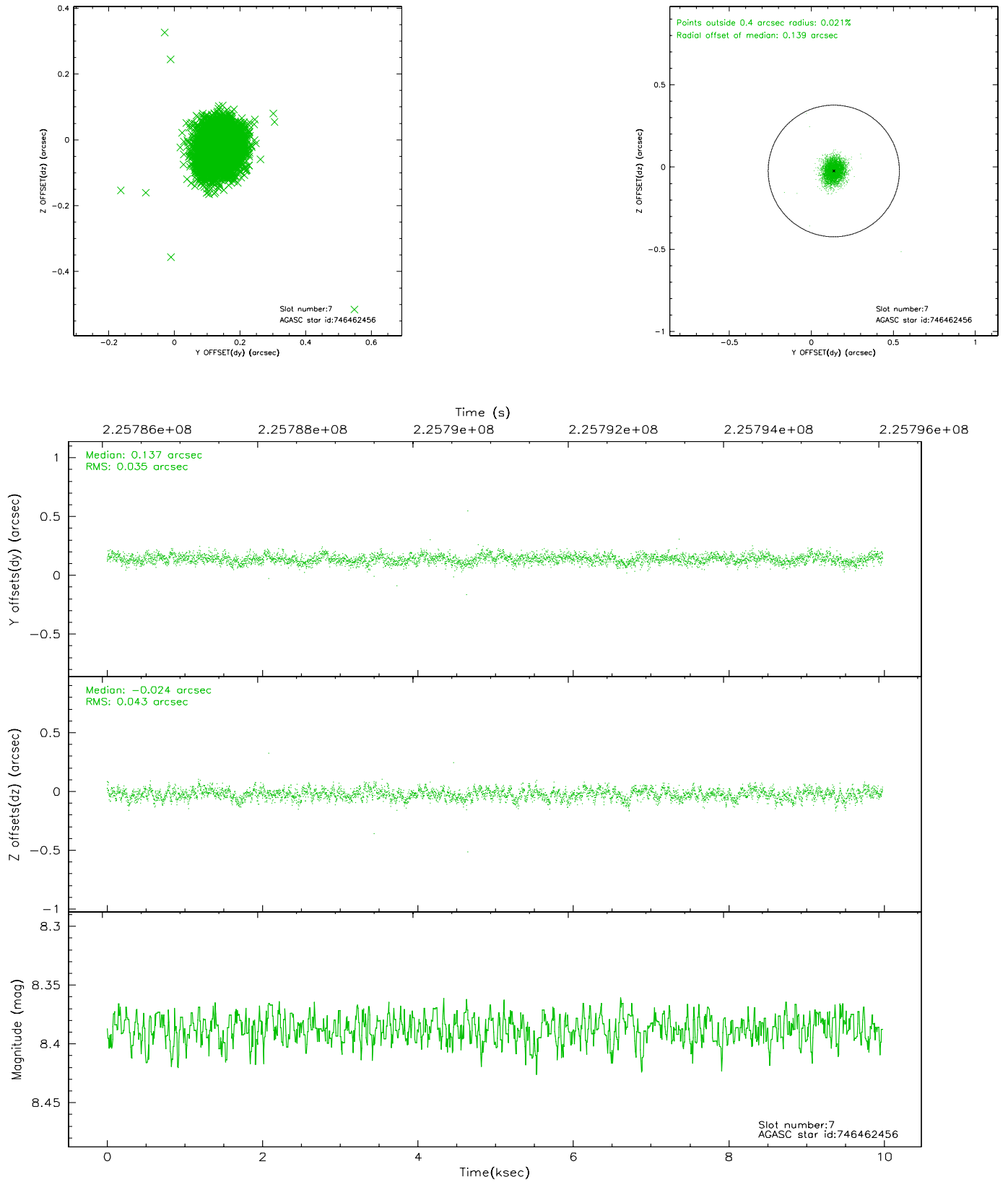
2.4.3 Slot 5



2.4.4 Slot 6

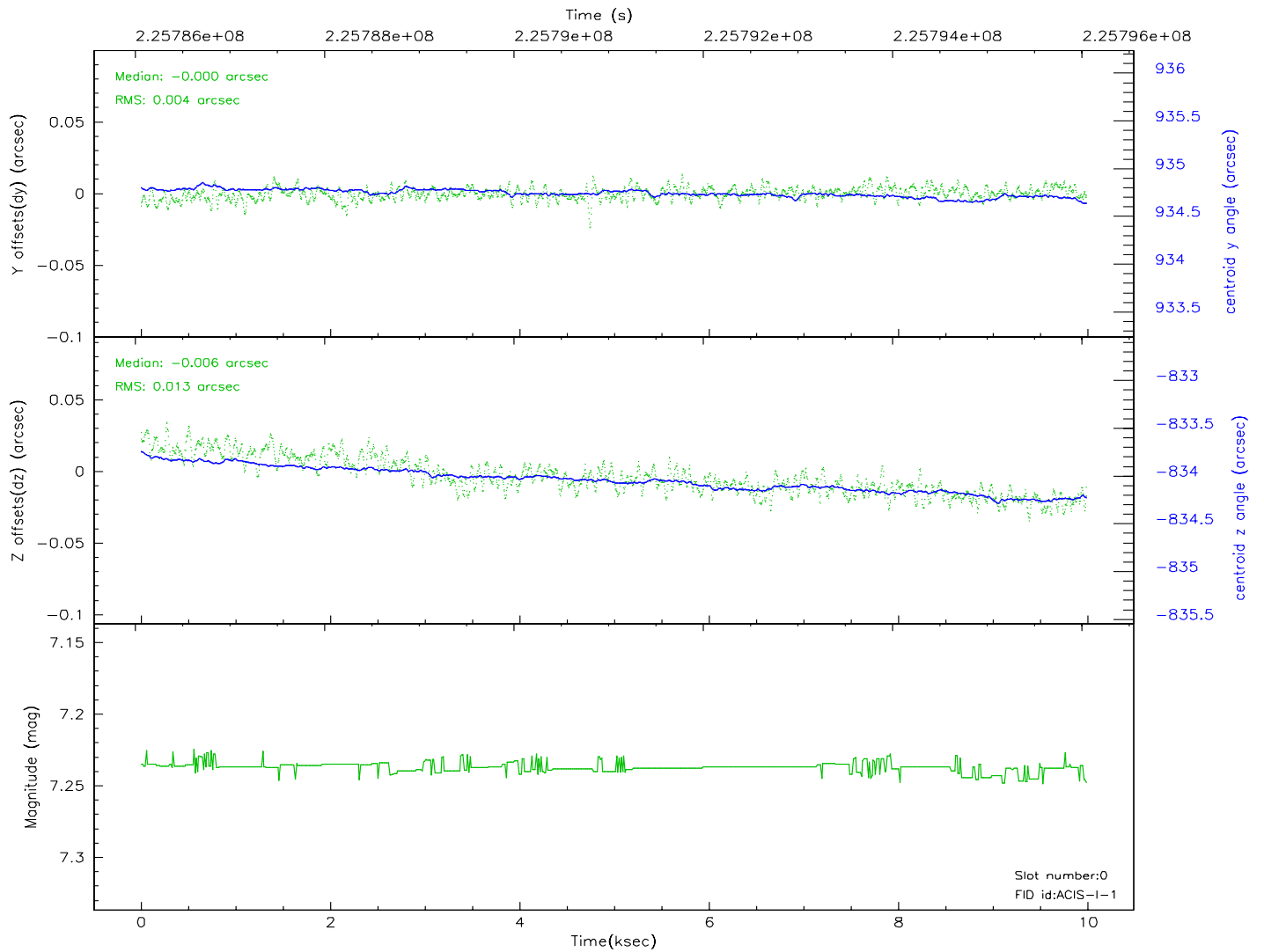
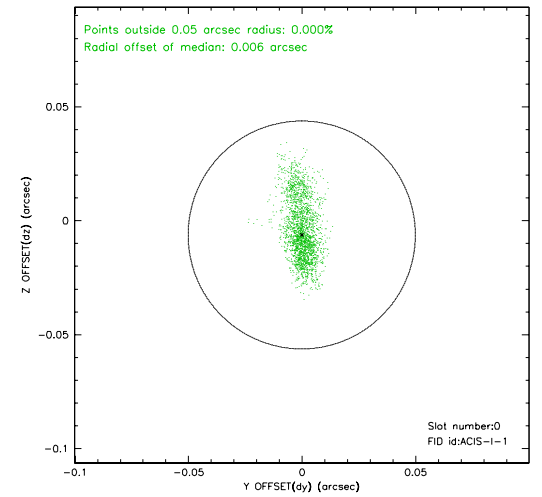
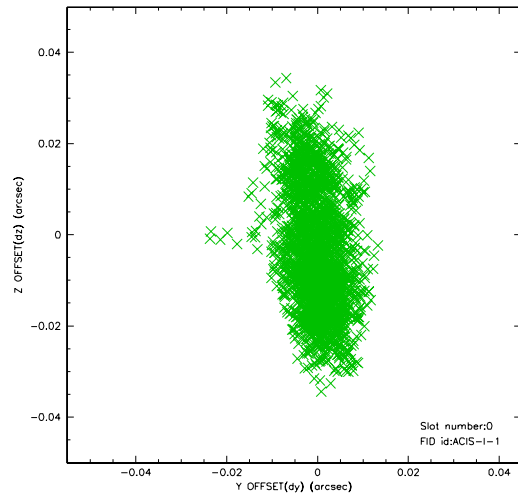


2.4.5 Slot 7

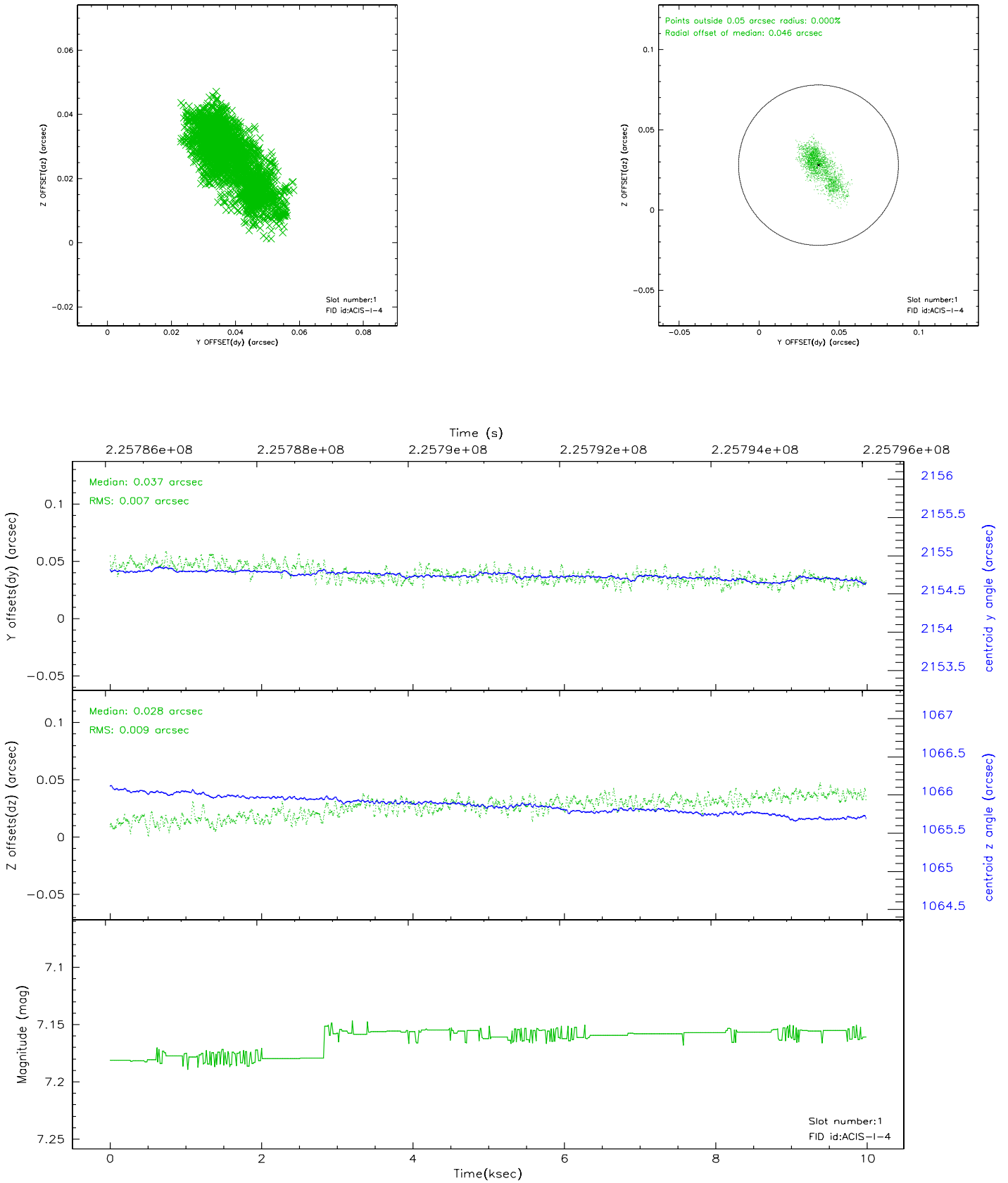


2.5 FID Slots

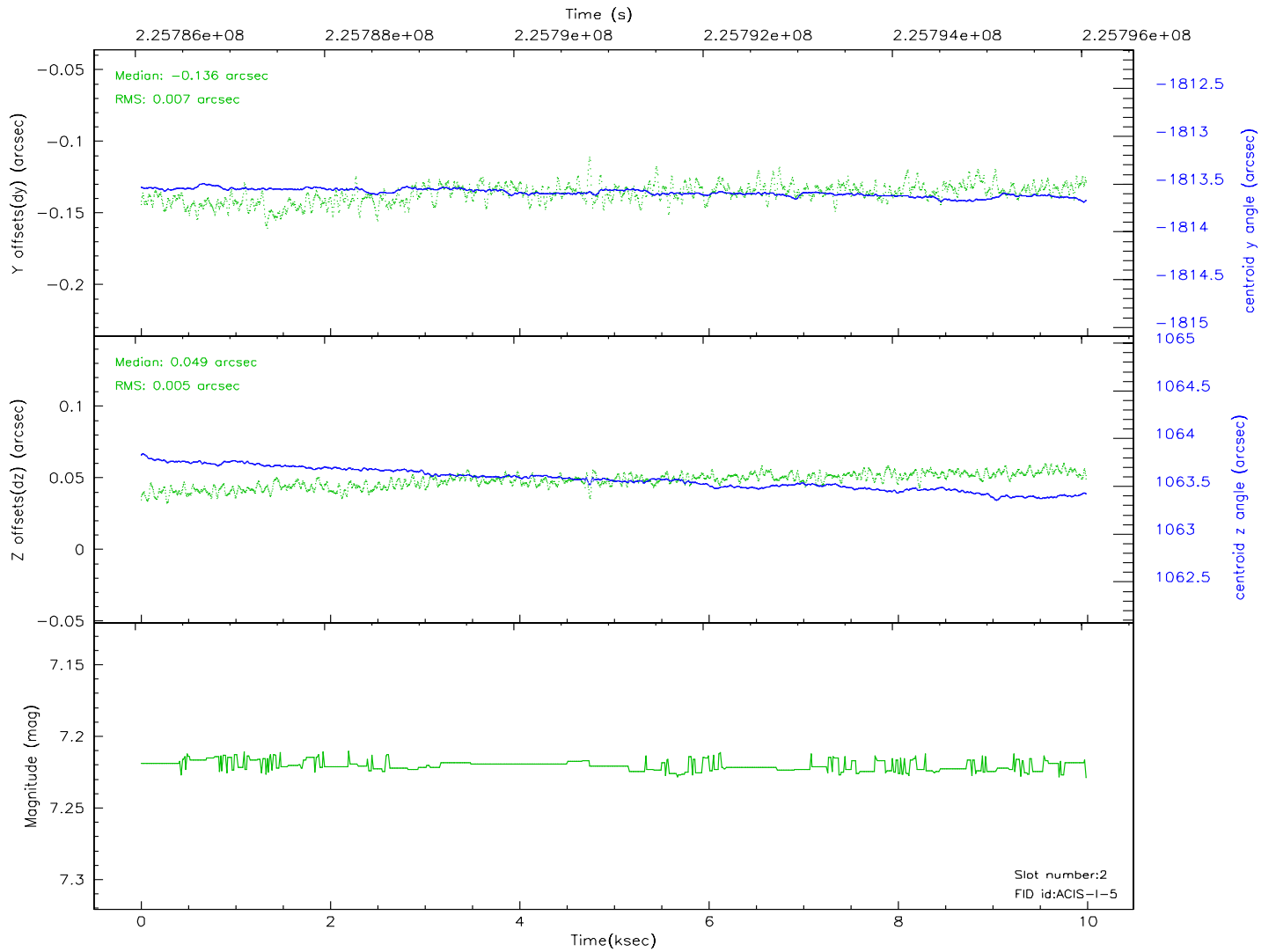
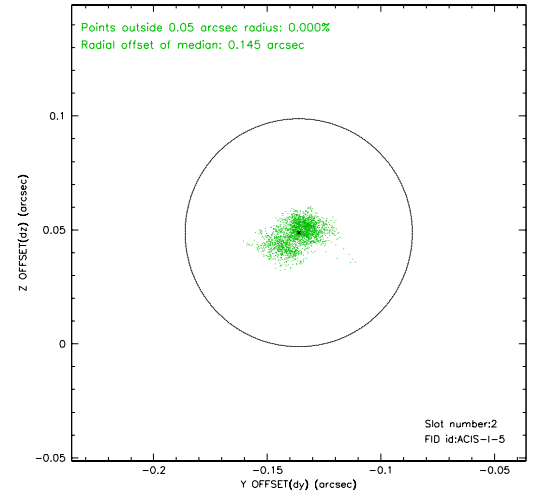
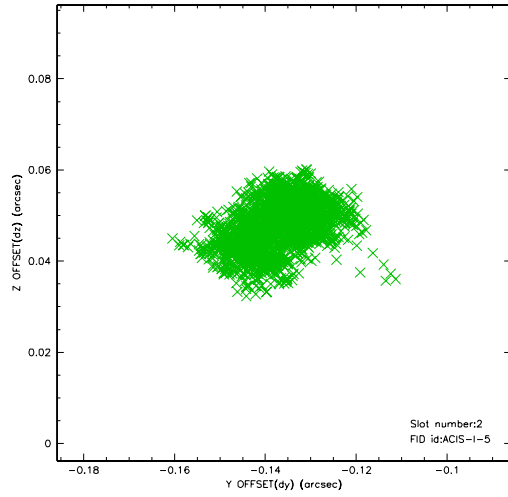
2.5.1 Slot 0



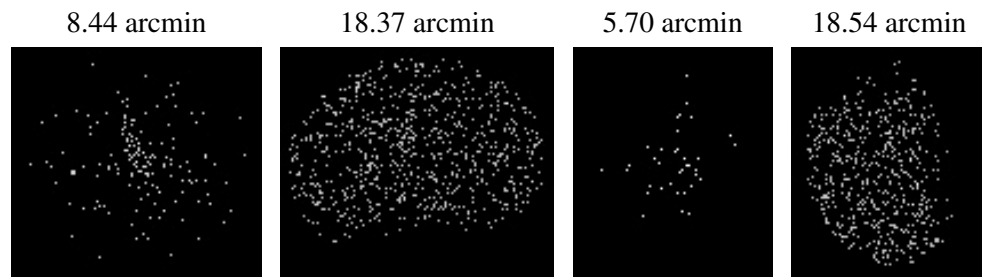
2.5.2 Slot 1



2.5.3 Slot 2



3 Point Sources



A Summary

A.1 Status

V&V Scientist	Jen Lauer
V&V Date (YYYY-MM-DD)	2006.02.27
V&V Edition	1
V&V Disposition and Status	OK
V&V Charge Time	9.555199

A.2 Comments

Window constraint met.