

# V&V Reference Report

## L2 ASCDS Version : 7.6.8

Observation 60580 - L2 Version 001  
Chandra X-Ray Center

L2 Processing Date : Jul 7 2006

## Contents

<b>1</b>	<b>Front</b>	<b>2</b>
<b>2</b>	<b>OBI</b>	<b>3</b>
2.1	OBI . . . . .	3
2.1.1	Images . . . . .	3
2.1.2	Bias . . . . .	3
2.1.3	Parameters . . . . .	4
2.1.4	Events . . . . .	4
2.2	Compared Parameters . . . . .	5
2.3	Aspect . . . . .	6
2.4	Star Slots . . . . .	8
2.5	FID Slots . . . . .	8
<b>A</b>	<b>Summary</b>	<b>9</b>
A.1	Status . . . . .	9
A.2	Comments . . . . .	9

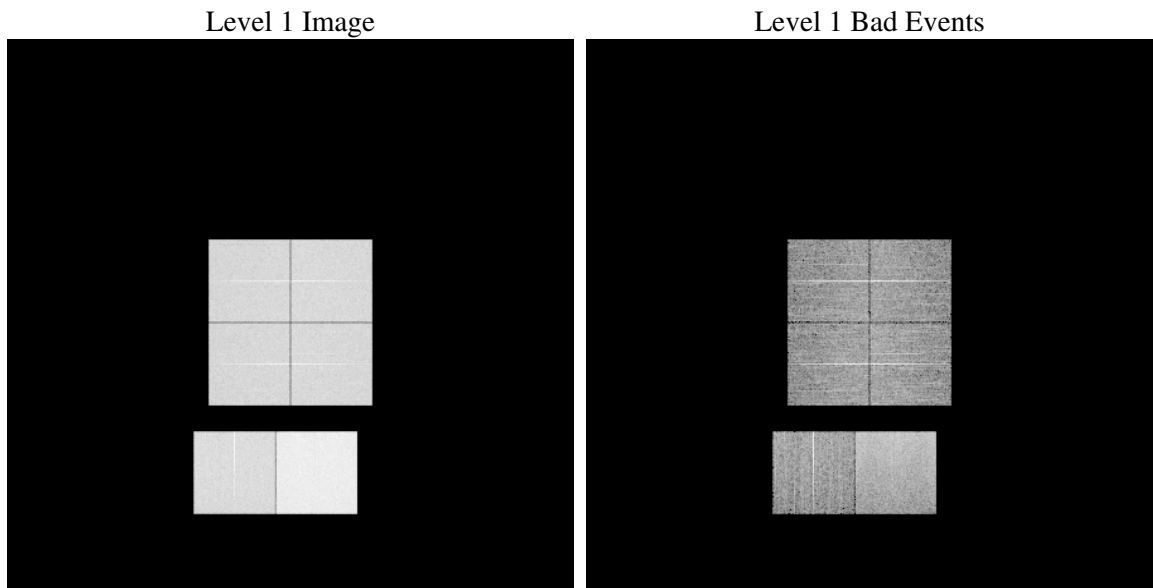
# 1 Front

seq_num	&#160
obs_id	60580
title	ACIS-012367 diagnostics
observer	CHANDRA engineering request/realtime commanding
object	&#160
dtcycle	0
cycle	P
ra_targ	0.0
dec_targ	0.0
ra_nom	214.06189675699
dec_nom	67.983270475564
roll_nom	291.30651934783
revision	2
ontime	12201.599954545
livetime	12047.095949
ontime0	7200.7888521254
ontime1	7466.5485619903
ontime2	6991.5898530781
ontime3	7100.3176386952
ontime6	7612.3917649984
ontime7	12201.599954545
l2events	1793851

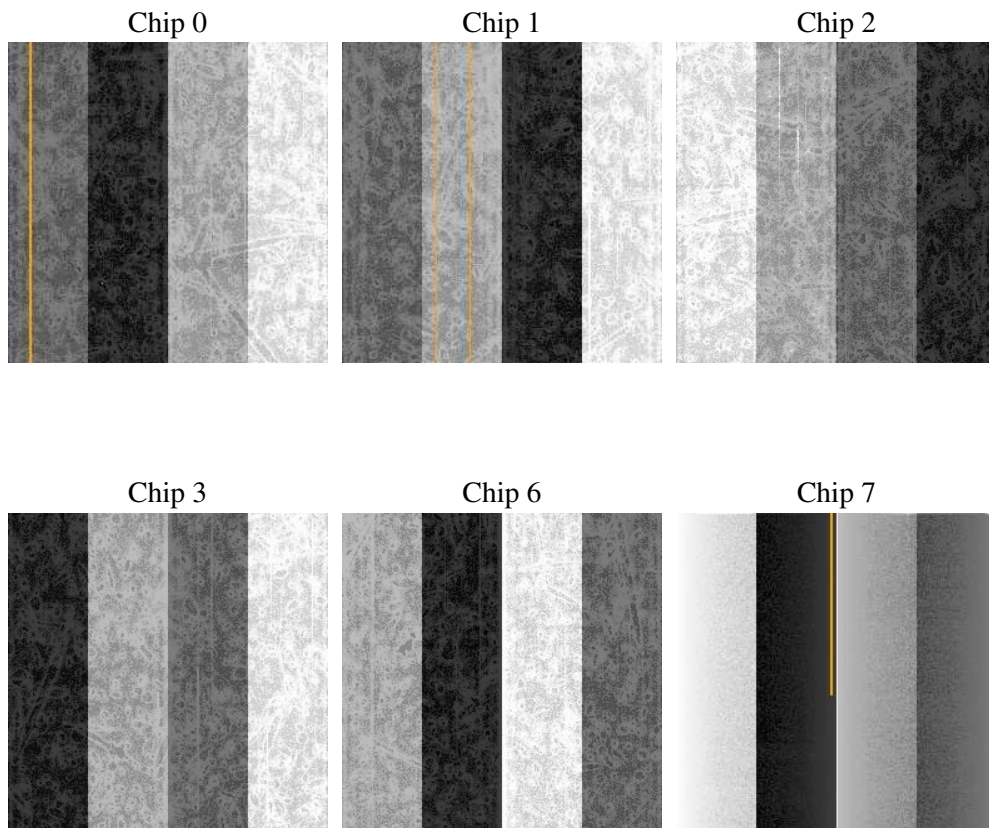
## 2 OBI

### 2.1 OBI

#### 2.1.1 Images



#### 2.1.2 Bias



### 2.1.3 Parameters

obi_num	0
ascdsver	7.6.8
caldbver	3.2.2
date	2006-07-08T02:07:02
revision	2

sched_exp_time	0.0
ontime	12205.604842097
ontime0	7204.7937396765
ontime1	7470.5534495413
ontime2	6994.1291896701
ontime3	7104.3225262463
ontime6	7616.3966525495
ontime7	12205.604842097
l1events	2209639

### 2.1.4 Events

	ccd 0	ccd 1	ccd 2	ccd 3	ccd 6	ccd 7
level 1 events	320009	332659	316950	325932	357021	557068
rejected events	46291	47988	48727	52857	52752	83217
rejected %	14%	14%	15%	16%	14%	14%

	ccd 0	ccd 1	ccd 2	ccd 3	ccd 6	ccd 7
grade 0 events	150723	155730	150471	153044	165064	84696
	47%	46%	47%	46%	46%	15%
grade 1 events	849	779	906	878	785	193
	0%	0%	0%	0%	0%	0%
grade 2 events	47335	50472	45201	46584	52417	143388
	14%	15%	14%	14%	14%	25%
grade 3 events	17646	18291	17462	17526	18900	34218
	5%	5%	5%	5%	5%	6%
grade 4 events	17577	18070	17409	17918	18915	33934
	5%	5%	5%	5%	5%	6%
grade 5 events	3114	3318	2989	3357	3647	10681
	0%	0%	0%	1%	1%	1%
grade 6 events	40577	42288	37841	38158	49126	177764
	12%	12%	11%	11%	13%	31%
grade 7 events	42188	43711	44671	48467	48167	72194
	13%	13%	14%	14%	13%	12%

## 2.2 Compared Parameters

Parameter	Planned	Actual	Parameter	Planned	Actual
Instrument	ACIS	ACIS	Obspar format version number	6	6
Detector	ACIS-012367	ACIS-012367	Obspar file type	PREDICTED	ACTUAL
Grating	NONE	NONE	Obspar update status	NONE	UPDATED
Data mode	FAINT	FAINT	On-chip summing requested	N	N
Observation mode	SECONDARY	SECONDARY	Subarray requested	NONE	NONE
Pointing RA	0	214.0618967569948	Alternating exposures requested	N	N
Pointing Dec	0	67.98327047556431	Primary exposure time	0.000000	3.2
Pointing Roll	0.0	291.3065193478316			
SIM focus pos (mm)	-0.782348	-0.7809083437167272			
SIM defocus (mm)	0	0.7524282956875696			
SIM translation stage pos (mm)	-233.592463	250.466033080201			
SIM translation stage offset (mm)	0	-0.01005468664627074			
Observation start time	177958618.095851	177958617.07113			
Observation start date	2003-08-22T16:56:58	2003-08-22T16:56:57			
Observation end time	177981118.896814	177981117.87209			
Observation end date	2003-08-22T23:11:59	2003-08-22T23:11:57			
Read mode	TIMED	TIMED			

## 2.3 Aspect



## **2.4 Star Slots**

## **2.5 FID Slots**



## A Summary

### A.1 Status

V&V Scientist	Jen Lauer
V&V Date (YYYY-MM-DD)	2006.07.10
V&V Edition	1
V&V Disposition and Status	OK
V&V Charge Time	12.2015999

### A.2 Comments