

# V&V Reference Report

## L2 ASCDS Version : 7.6.7.2

Observation 60360 - L2 Version 001  
Chandra X-Ray Center

L2 Processing Date : Jun 2 2006

## Contents

<b>1</b>	<b>Front</b>	<b>2</b>
<b>2</b>	<b>OBI</b>	<b>3</b>
2.1	OBI . . . . .	3
2.1.1	Images . . . . .	3
2.1.2	Bias . . . . .	3
2.1.3	Parameters . . . . .	4
2.1.4	Events . . . . .	4
2.2	Compared Parameters . . . . .	5
2.3	Aspect . . . . .	6
2.4	Star Slots . . . . .	8
2.5	FID Slots . . . . .	8
<b>A</b>	<b>Summary</b>	<b>9</b>
A.1	Status . . . . .	9
A.2	Comments . . . . .	9

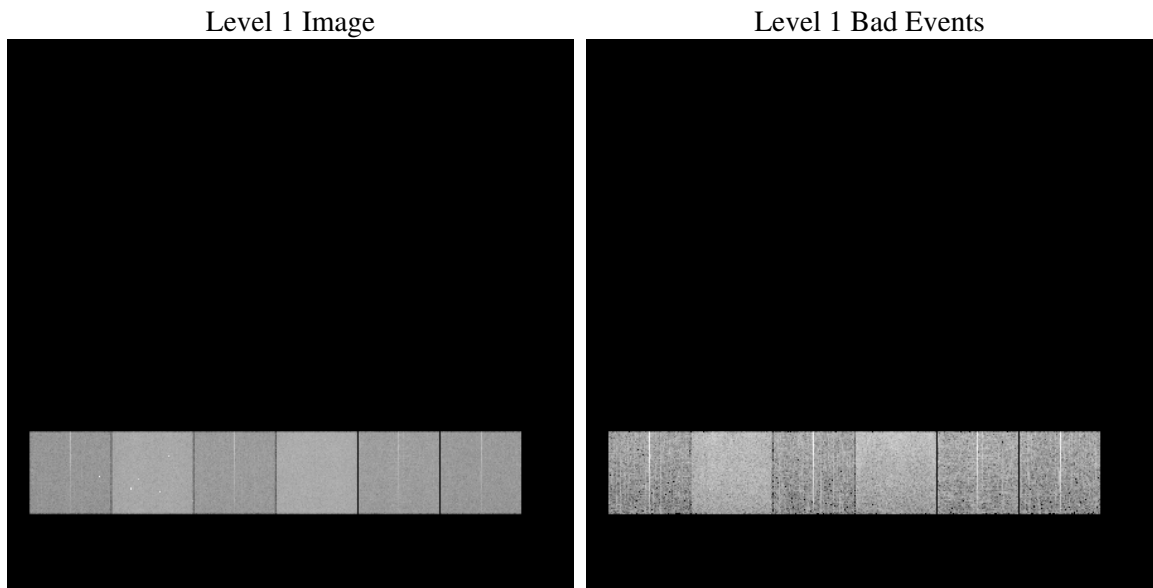
# 1 Front

seq_num	&#160
obs_id	60360
title	ACIS-456789 diagnostics
observer	CHANDRA engineering request/realtime commanding
object	&#160
dtcycle	0
cycle	P
ra_targ	0.0
dec_targ	0.0
ra_nom	163.972757673
dec_nom	15.01116647744
roll_nom	124.12637088047
revision	2
ontime	7801.5999709368
livetime	7702.8114145452
ontime4	4654.607105583
ontime5	7801.5999709368
ontime6	5037.4757018387
ontime7	7801.5999709368
ontime8	5264.426728487
ontime9	4917.4363517165
l2events	1094026

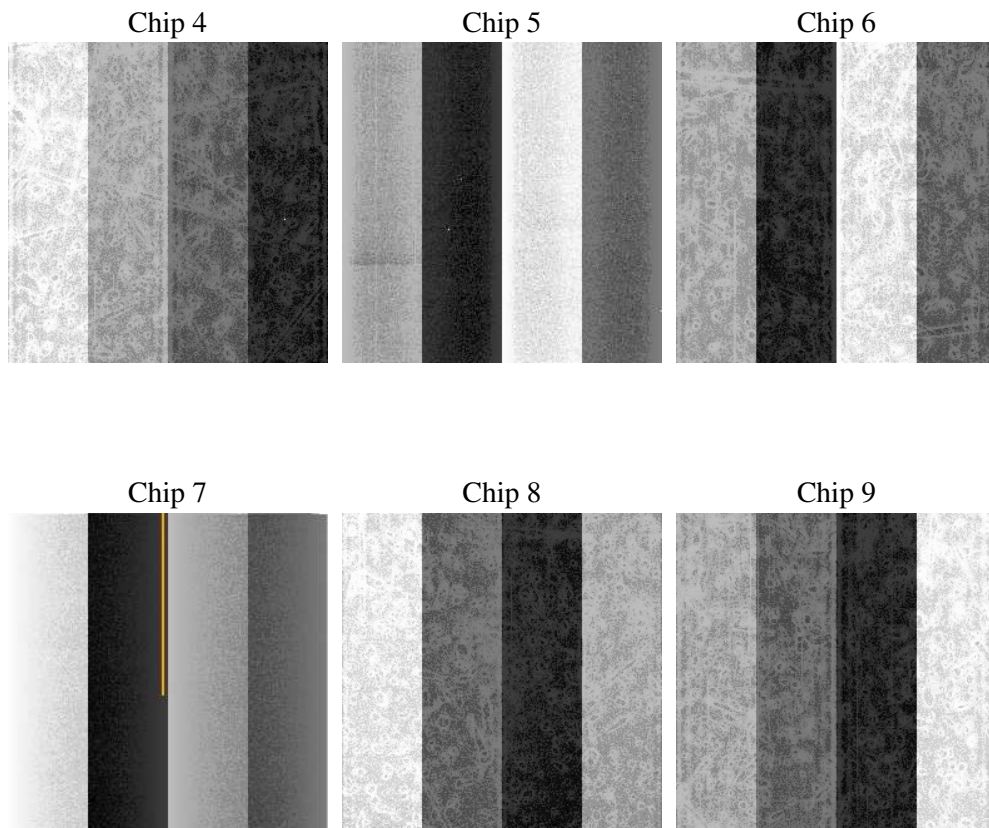
## 2 OBI

### 2.1 OBI

#### 2.1.1 Images



#### 2.1.2 Bias



### 2.1.3 Parameters

obi_num	1
ascdsver	7.6.7.2
caldbver	3.2.2
date	2006-06-02T22:58:39
revision	2

sched_exp_time	0.0
ontime	7804.3463115096
ontime4	4657.3534461558
ontime5	7804.3463115096
ontime6	5039.789724797
ontime7	7804.3463115096
ontime8	5266.6586714685
ontime9	4919.8734946847
l1events	1416190

### 2.1.4 Events

	ccd 4	ccd 5	ccd 6	ccd 7	ccd 8	ccd 9
level 1 events	181618	294023	207516	315677	221100	196256
rejected events	34662	58488	36867	55151	39978	35699
rejected %	19%	19%	17%	17%	18%	18%

	ccd 4	ccd 5	ccd 6	ccd 7	ccd 8	ccd 9
grade 0 events	86415	26956	93051	44601	99586	88917
	47%	9%	44%	14%	45%	45%
grade 1 events	616	129	425	107	505	451
	0%	0%	0%	0%	0%	0%
grade 2 events	22638	111330	29551	80153	31649	27300
	12%	37%	14%	25%	14%	13%
grade 3 events	9729	7268	10459	18449	11717	10310
	5%	2%	5%	5%	5%	5%
grade 4 events	9704	7309	10447	18192	11603	10170
	5%	2%	5%	5%	5%	5%
grade 5 events	2117	5762	2310	6561	2827	2402
	1%	1%	1%	2%	1%	1%
grade 6 events	18575	82770	27242	99251	26663	23945
	10%	28%	13%	31%	12%	12%
grade 7 events	31824	52499	34031	48363	36550	32761
	17%	17%	16%	15%	16%	16%

## 2.2 Compared Parameters

Parameter	Planned	Actual	Parameter	Planned	Actual
Instrument	ACIS	ACIS	Obspar format version number	6	6
Detector	ACIS-456789	ACIS-456789	Obspar file type	PREDICTED	ACTUAL
Grating	NONE	NONE	Obspar update status	NONE	UPDATED
Data mode	FAINT	FAINT	On-chip summing requested	N	N
Observation mode	SECONDARY	SECONDARY	Subarray requested	NONE	NONE
Pointing RA	0	163.9727576730027	Alternating exposures requested	N	N
Pointing Dec	0	15.01116647743978	Primary exposure time	0.000000	3.2
Pointing Roll	0.0	124.1263708804721			
SIM focus pos (mm)	-0.684267	-0.6828225247311905			
SIM defocus (mm)	0	0.8505141146731063			
SIM translation stage pos (mm)	-190.132523	250.466033080201			
SIM translation stage offset (mm)	0	-0.01005468664627074			
Observation start time	193958883.13844	193958882.11372			
Observation start date	2004-02-23T21:28:03	2004-02-23T21:28:02			
Observation end time	193975256.489157	193975255.46444			
Observation end date	2004-02-24T02:00:56	2004-02-24T02:00:55			
Read mode	TIMED	TIMED			

## 2.3 Aspect



## **2.4 Star Slots**

## **2.5 FID Slots**



## A Summary

### A.1 Status

V&V Scientist	Jen Lauer
V&V Date (YYYY-MM-DD)	2006.06.04
V&V Edition	1
V&V Disposition and Status	OK
V&V Charge Time	7.80159997

### A.2 Comments

The ACIS focal plane temperature was above calibration limits for the entire observation.