

V&V Reference Report

L2 ASCDS Version : 8.4.5

Observation 60190 - L2 Version 3
Chandra X-Ray Center

L2 Processing Date : Dec 3 2012

Contents

1	Front	2
2	OBI Primary	3
2.1	OBI	3
2.1.1	Images	3
2.1.2	Bias	3
2.1.3	Parameters	4
2.1.4	Events	4
2.2	Compared Parameters	5
2.3	Star Slots	6
2.4	FID Slots	6
3	OBI Secondary	6
3.1	OBI	6
3.1.1	Images	6
3.1.2	Bias	6
3.1.3	Parameters	7
3.1.4	Events	7
A	Summary	8
A.1	Status	8
A.2	Comments	8

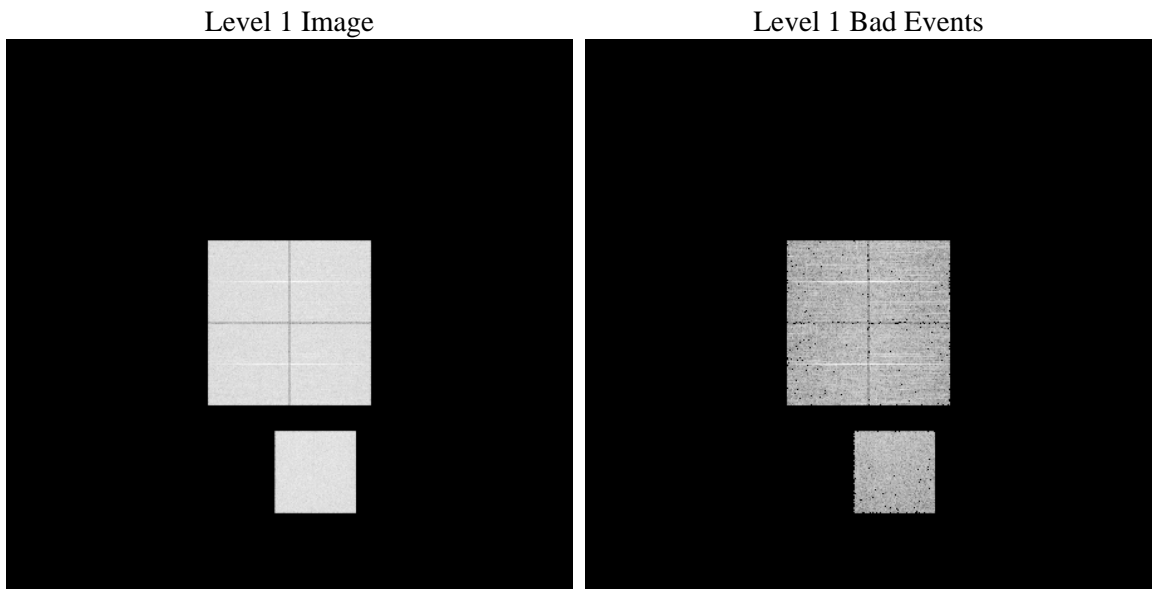
1 Front

seq_num	 	Sequence number
obs_id	60190	Observation id
title	ACIS-01237 diagnostics	Proposal title
observer	CHANDRA engineering request/realtime commanding	Principal investig
object	 	Source name
dtcycle	0	
cycle	P	events are from which exps? P[rimary] S[econdar
ra_targ	0.0	Observer's specified target RA [deg]
dec_targ	0.0	Observer's specified target Dec [deg]
ra_nom	350.77352000057	Nominal RA [deg]
dec_nom	-33.681724770636	Nominal Dec [deg]
roll_nom	107.42547737303	Nominal Roll [deg]
revision	3	Processing version of data
ontime	4365.3948639035	Sum of GTIs [s]
livetime	4314.8007431891	Livetime [s]
ontime0	4202.5070237517	Sum of GTIs [s]
ontime1	4266.2457438111	Sum of GTIs [s]
ontime2	4102.4501266778	Sum of GTIs [s]
ontime3	4142.3093436956	Sum of GTIs [s]
ontime7	4365.3948639035	Sum of GTIs [s]
l2events	613744	Number of level 2 events

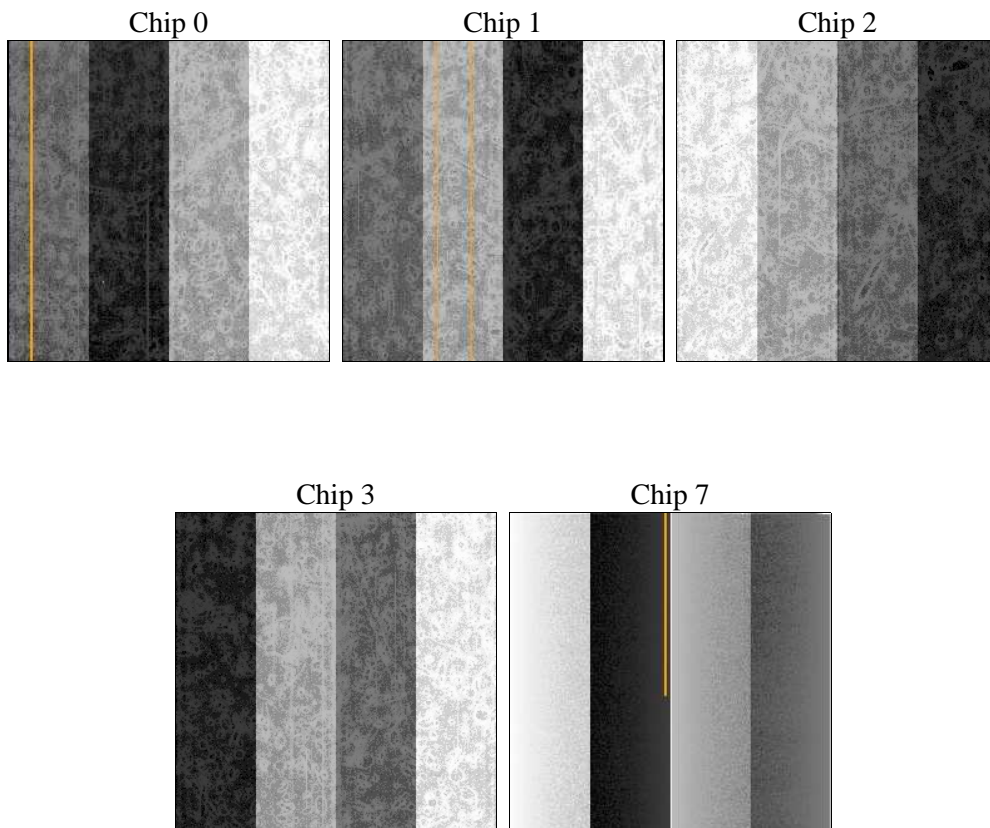
2 OBI Primary

2.1 OBI

2.1.1 Images



2.1.2 Bias



2.1.3 Parameters

obi_num	0	Obi number	sched_exp_time	0.0	[s] Scheduled observation exposure time
ascdsver	8.4.5	Processing system revision	ontime	4365.3948639035	Sum of GTIs [s]
caldsver	4.5.2	 	ontime0	4202.5070237517	Sum of GTIs [s]
date	2012-12-03T11:37:05	Date and time of file creation	ontime1	4266.2457438111	Sum of GTIs [s]
revision	3	Processing version of data	ontime2	4102.4501266778	Sum of GTIs [s]
			ontime3	4142.3093436956	Sum of GTIs [s]
			ontime7	4365.3948639035	Sum of GTIs [s]
			l1events	794537	Number of level 1 events

2.1.4 Events

	ccd 0	ccd 1	ccd 2	ccd 3	ccd 7
level 1 events	154529	159005	153755	157227	170021
rejected events	28955	31264	30388	32179	26828
rejected %	18%	19%	19%	20%	15%

	ccd 0	ccd 1	ccd 2	ccd 3	ccd 7
grade 0 events	69862	70408	69740	71155	34599
	45%	44%	45%	45%	20%
grade 1 events	423	372	475	454	111
	0%	0%	0%	0%	0%
grade 2 events	22001	23210	20791	21470	31953
	14%	14%	13%	13%	18%
grade 3 events	8215	8054	8064	8293	14179
	5%	5%	5%	5%	8%
grade 4 events	8257	8034	8179	8077	14389
	5%	5%	5%	5%	8%
grade 5 events	1935	1948	1785	1948	4710
	1%	1%	1%	1%	2%
grade 6 events	18306	19045	17565	17096	49138
	11%	11%	11%	10%	28%
grade 7 events	25530	27934	27156	28734	20942
	16%	17%	17%	18%	12%

2.2 Compared Parameters

Parameter	Planned	Actual	Parameter	Planned	Actual
Instrument	ACIS	ACIS	Obspar format version number	7	7
Detector	ACIS-01237	ACIS-01237	Obspar file type	PREDICTED	ACTUAL
Grating	NONE	NONE	Obspar update status	NONE	UPDATED
Data mode	FAINT	FAINT	On-chip summing requested	N	N
Observation mode	SECONDARY	SECONDARY	Subarray requested	NONE	NONE
[deg] Pointing RA	0	350.7735200005654	Alternating exposures requested	N	Y
[deg] Pointing Dec	0	-33.68172477063646	[s] Primary exposure time	0.000000	3.5
[deg] Pointing Roll	0.0	107.4254773730318	[s] Secondary exposure time	N/A	3.2
[mm] SIM focus pos	-0.782348	-0.6828225247311905	Duty cycle	N/A	1
[mm] SIM defocus	0	0.8505141146731063			
[mm] SIM translation stage pos	-233.592463	250.466033080201			
[mm] SIM translation stage offset	0	-0.01005468664627074			
[s] Observation start time (MET)	203819730.022961	203819728.99796			
Observation start date	2004-06-17T00:35:30	2004-06-17T00:35:28			
[s] Observation end time (MET)	203842144.723954	203842143.69895			
Observation end date	2004-06-17T06:49:05	2004-06-17T06:49:03			
Read mode	TIMED	TIMED			

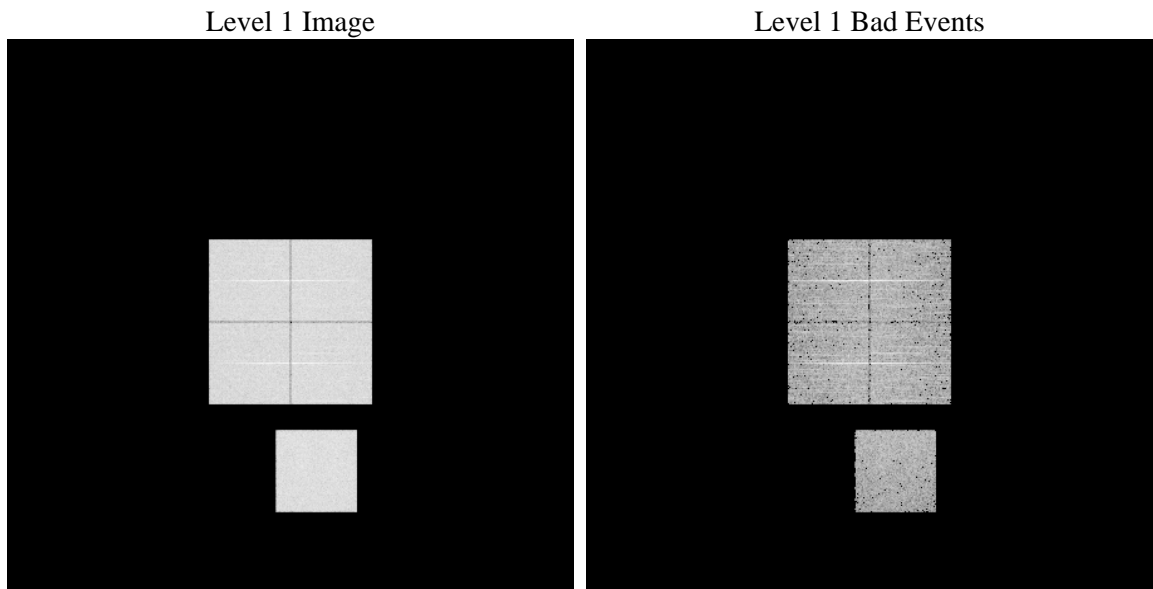
2.3 Star Slots

2.4 FID Slots

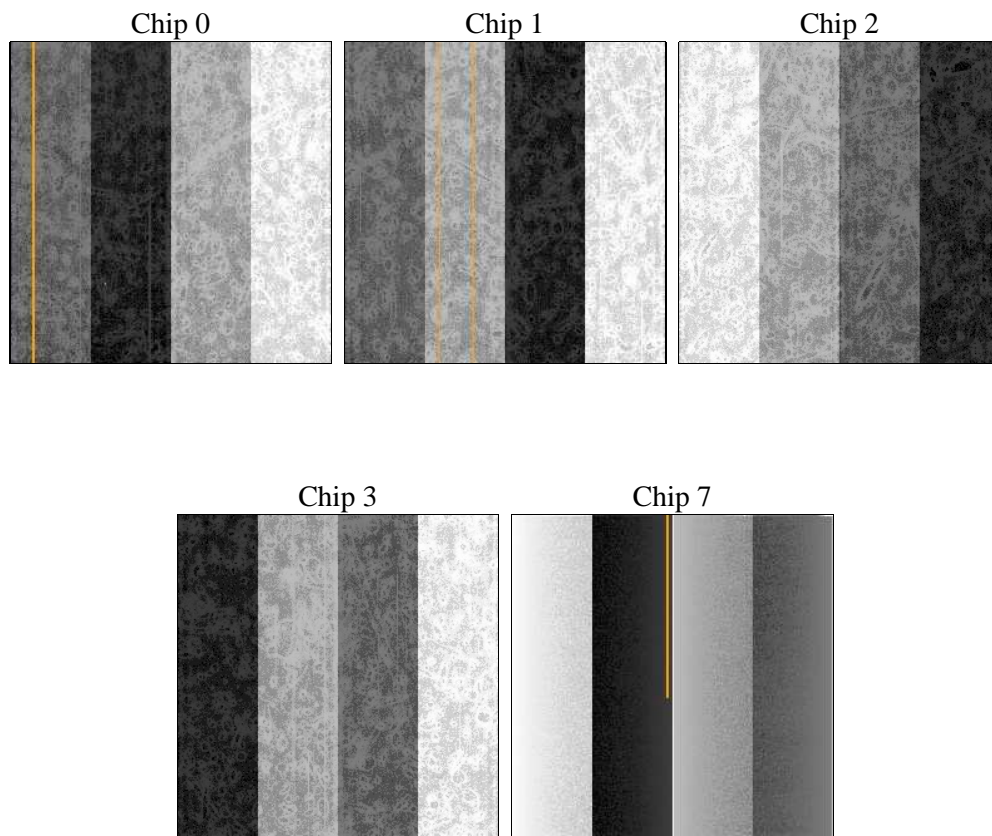
3 OBI Secondary

3.1 OBI

3.1.1 Images



3.1.2 Bias



3.1.3 Parameters

obi_num	0	Obi number			
ascdsver	8.4.5	Processing system revision	sched_exp_time	0.0	[s] Scheduled observation exposure time
caldbver	4.5.2	 	ontime	3998.0050420165	Sum of GTIs [s]
date	2012-12-03T11:36:44	Date and time of file creation	ontime0	3875.0096823573	Sum of GTIs [s]
revision	3	Processing version of data	ontime1	3904.1380022764	Sum of GTIs [s]
			ontime2	3661.0189629197	Sum of GTIs [s]
			ontime3	3800.3426425457	Sum of GTIs [s]
			ontime7	3998.0050420165	Sum of GTIs [s]
			l1events	730807	Number of level 1 events

3.1.4 Events

	ccd 0	ccd 1	ccd 2	ccd 3	ccd 7
level 1 events	143512	145390	139453	145655	156797
rejected events	27807	28078	29031	30667	25585
rejected %	19%	19%	20%	21%	16%

	ccd 0	ccd 1	ccd 2	ccd 3	ccd 7
grade 0 events	64388	64833	62451	65228	31722
	44%	44%	44%	44%	20%
grade 1 events	370	325	382	443	100
	0%	0%	0%	0%	0%
grade 2 events	20251	21099	18343	19501	29162
	14%	14%	13%	13%	18%
grade 3 events	7373	7551	7224	7627	13067
	5%	5%	5%	5%	8%
grade 4 events	7500	7388	7395	7586	13001
	5%	5%	5%	5%	8%
grade 5 events	1735	1756	1582	1740	4429
	1%	1%	1%	1%	2%
grade 6 events	16963	17352	15751	16010	45231
	11%	11%	11%	10%	28%
grade 7 events	24932	25086	26325	27520	20085
	17%	17%	18%	18%	12%

A Summary

A.1 Status

V&V Scientist	Beth Sundheim
V&V Date (YYYY-MM-DD)	2012.12.23
V&V Edition	1
V&V Disposition and Status	OK
V&V Charge Time	8.36339990592

A.2 Comments