

V&V Reference Report

L2 ASCDS Version : 7.6.7.2

Observation 60090 - L2 Version _e1
Chandra X-Ray Center

L2 Processing Date : Apr 25 2006

Contents

1	Front	2
2	OBI Primary	3
2.1	OBI	3
2.1.1	Images	3
2.1.2	Bias	3
2.1.3	Parameters	4
2.1.4	Events	4
2.2	Compared Parameters	5
2.3	Aspect	6
2.4	Star Slots	8
2.5	FID Slots	8
3	OBI Secondary	8
3.1	OBI	8
3.1.1	Images	8
3.1.2	Bias	8
3.1.3	Parameters	9
3.1.4	Events	9
A	Summary	10
A.1	Status	10
A.2	Comments	10

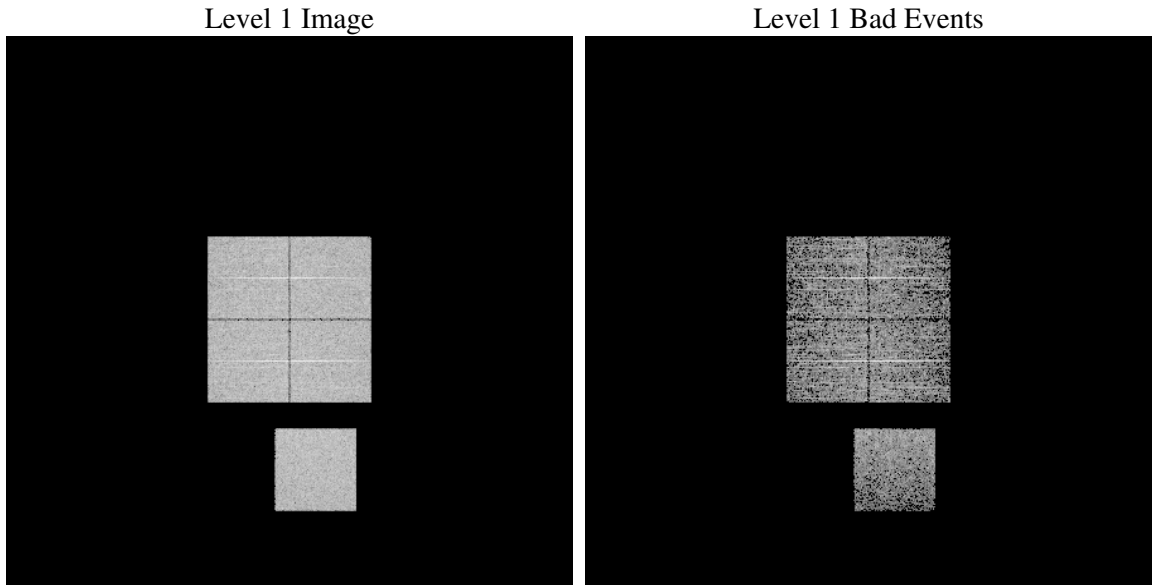
1 Front

seq_num	
obs_id	60090
title	ACIS-01237 diagnostics
observer	CHANDRA engineering request/realtime commanding
object	
dtcycle	0
cycle	P
ra_targ	0.0
dec_targ	0.0
ra_nom	323.00173823151
dec_nom	-11.025819937462
roll_nom	251.36686417786
revision	2
ontime	4591.6498986185
livetime	1474.758223973
ontime0	4591.6499185264
ontime1	4591.6499185264
ontime2	4591.6499185264
ontime3	4591.6499185264
ontime7	4591.6498986185
l2events	214905

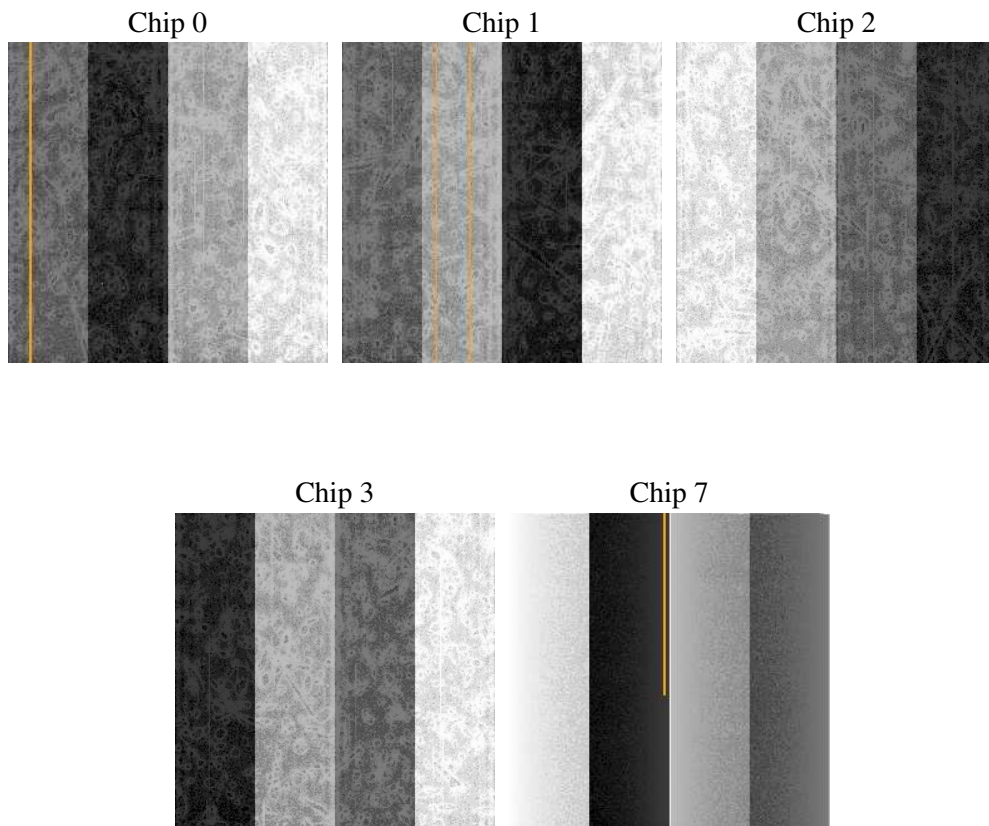
2 OBI Primary

2.1 OBI

2.1.1 Images



2.1.2 Bias



2.1.3 Parameters

obi_num	1
ascdsver	7.6.7.2
caldbver	3.2.1
date	2006-04-25T08:12:11
revision	2

sched_exp_time	0.0
ontime	4595.5161745548
ontime0	4595.5161745548
ontime1	4595.5161745548
ontime2	4595.5161745548
ontime3	4595.5161745548
ontime7	4595.5161745548
llevents	304922

2.1.4 Events

	ccd 0	ccd 1	ccd 2	ccd 3	ccd 7
level 1 events	60318	58975	62064	61500	62065
rejected events	15726	14549	16913	16532	14537
rejected %	26%	24%	27%	26%	23%

	ccd 0	ccd 1	ccd 2	ccd 3	ccd 7
grade 0 events	24698	24372	25297	25341	8530
	40%	41%	40%	41%	13%
grade 1 events	124	77	101	94	25
	0%	0%	0%	0%	0%
grade 2 events	7760	7841	7607	7548	14430
	12%	13%	12%	12%	23%
grade 3 events	2955	2816	2912	2968	3527
	4%	4%	4%	4%	5%
grade 4 events	2806	2921	3039	3009	3506
	4%	4%	4%	4%	5%
grade 5 events	765	787	769	913	1678
	1%	1%	1%	1%	2%
grade 6 events	6373	6476	6296	6102	17535
	10%	10%	10%	9%	28%
grade 7 events	14837	13685	16043	15525	12834
	24%	23%	25%	25%	20%

2.2 Compared Parameters

Parameter	Planned	Actual	Parameter	Planned	Actual
Instrument	ACIS	ACIS	Obspar format version number	6	6
Detector	ACIS-01237	ACIS-01237	Obspar file type	PREDICTED	ACTUAL
Grating	NONE	NONE	Obspar update status	NONE	UPDATED
Data mode	FAINT	FAINT	On-chip summing requested	N	N
Observation mode	SECONDARY	SECONDARY	Subarray requested	NONE	NONE
Pointing RA	0	323.0017382315059	Alternating exposures requested	Y	Y
Pointing Dec	0	-11.02581993746188	Primary exposure time	1.5	1.5
Pointing Roll	0.0	251.3668641778553	Secondary exposure time	3.2	3.2
SIM focus pos (mm)	-0.782348	-0.6828225247311905	Duty cycle	1	1
SIM defocus (mm)	0	0.8505141146731063			
SIM translation stage pos (mm)	-233.592463	250.466033080201			
SIM translation stage offset (mm)	0	-0.01005468664627074			
Observation start time	209257570.51439	209257569.48938			
Observation start date	2004-08-18T23:06:11	2004-08-18T23:06:09			
Observation end time	209281910.165473	209281909.14047			
Observation end date	2004-08-19T05:51:50	2004-08-19T05:51:49			
Read mode	TIMED	TIMED			

2.3 Aspect

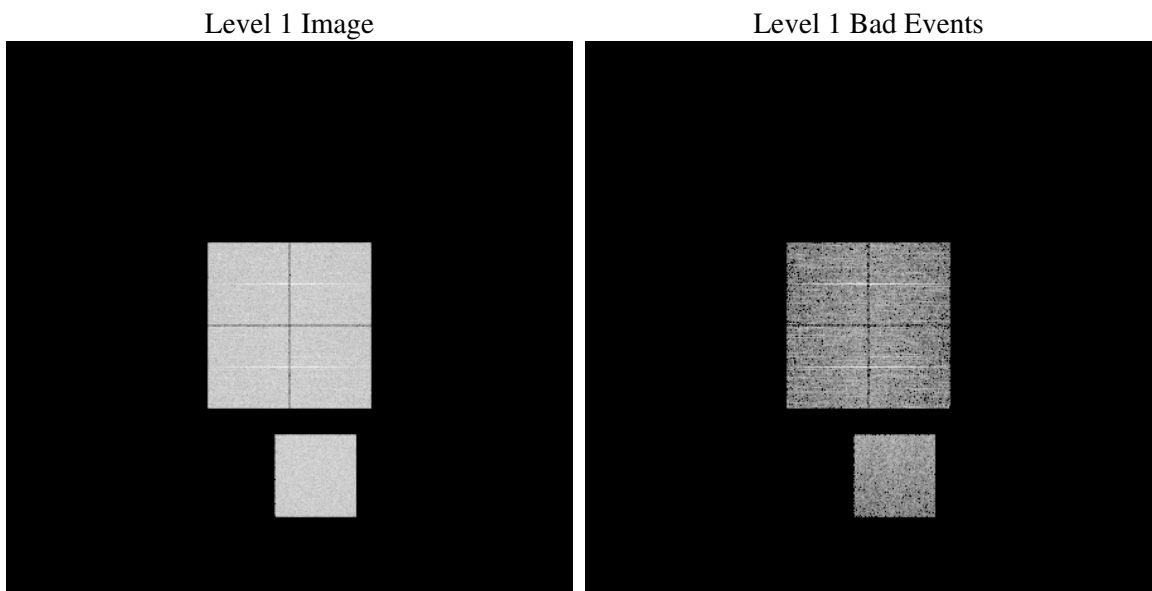
2.4 Star Slots

2.5 FID Slots

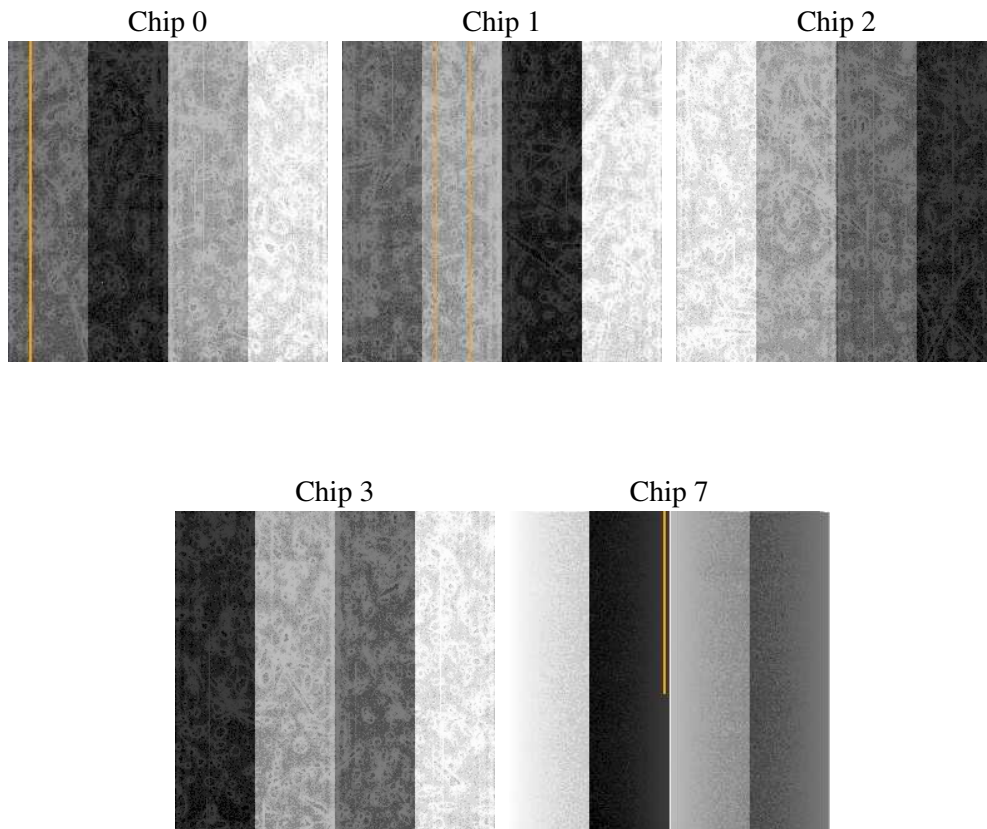
3 OBI Secondary

3.1 OBI

3.1.1 Images



3.1.2 Bias



3.1.3 Parameters

obi_num	1
ascdsver	7.6.7.2
caldsver	3.2.1
date	2006-04-25T08:15:39
revision	2

sched_exp_time	0.0
ontime	3192.4243915081
ontime0	3192.4243915081
ontime1	3192.4243915081
ontime2	3192.4243915081
ontime3	3192.4243915081
ontime7	3192.4243915081
l1events	576631

3.1.4 Events

	ccd 0	ccd 1	ccd 2	ccd 3	ccd 7
level 1 events	111752	114080	115629	115545	119625
rejected events	20690	22120	23732	23418	22985
rejected %	18%	19%	20%	20%	19%

	ccd 0	ccd 1	ccd 2	ccd 3	ccd 7
grade 0 events	50057	50195	51354	51583	16892
	44%	43%	44%	44%	14%
grade 1 events	270	260	363	349	53
	0%	0%	0%	0%	0%
grade 2 events	15872	16306	15490	15625	28882
	14%	14%	13%	13%	24%
grade 3 events	6055	5944	5973	6065	7074
	5%	5%	5%	5%	5%
grade 4 events	5851	5934	6076	6077	6938
	5%	5%	5%	5%	5%
grade 5 events	1346	1518	1311	1491	2801
	1%	1%	1%	1%	2%
grade 6 events	13323	13659	13094	12864	36955
	11%	11%	11%	11%	30%
grade 7 events	18978	20264	21968	21491	20030
	16%	17%	18%	18%	16%

A Summary

A.1 Status

V&V Scientist	Jen Lauer
V&V Date (YYYY-MM-DD)	2006.04.25
V&V Edition	1
V&V Disposition and Status	OK
V&V Charge Time	7.78122602

A.2 Comments