

V&V Reference Report

L2 ASCDS Version : 7.6.7.1

Observation 6000 - L2 Version 002
Chandra X-Ray Center

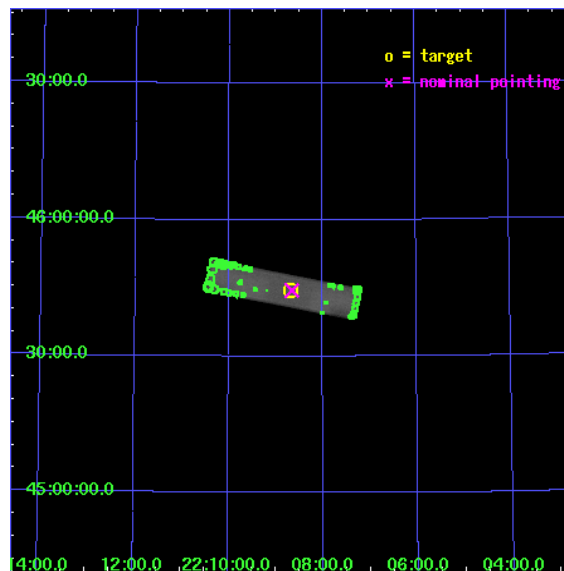
L2 Processing Date : Mar 23 2006

Contents

1	Front	2
2	OBI	3
2.1	OBI	3
2.1.1	Images	3
2.1.2	Parameters	4
2.1.3	Events	4
2.2	Compared Parameters	5
2.3	Aspect	6
2.4	Star Slots	9
2.4.1	Slot 3	9
2.4.2	Slot 4	10
2.4.3	Slot 5	11
2.4.4	Slot 6	12
2.4.5	Slot 7	13
2.5	FID Slots	14
2.5.1	Slot 0	14
2.5.2	Slot 1	15
2.5.3	Slot 2	16
3	Point Sources	17
A	Summary	18
A.1	Status	18
A.2	Comments	18

1 Front

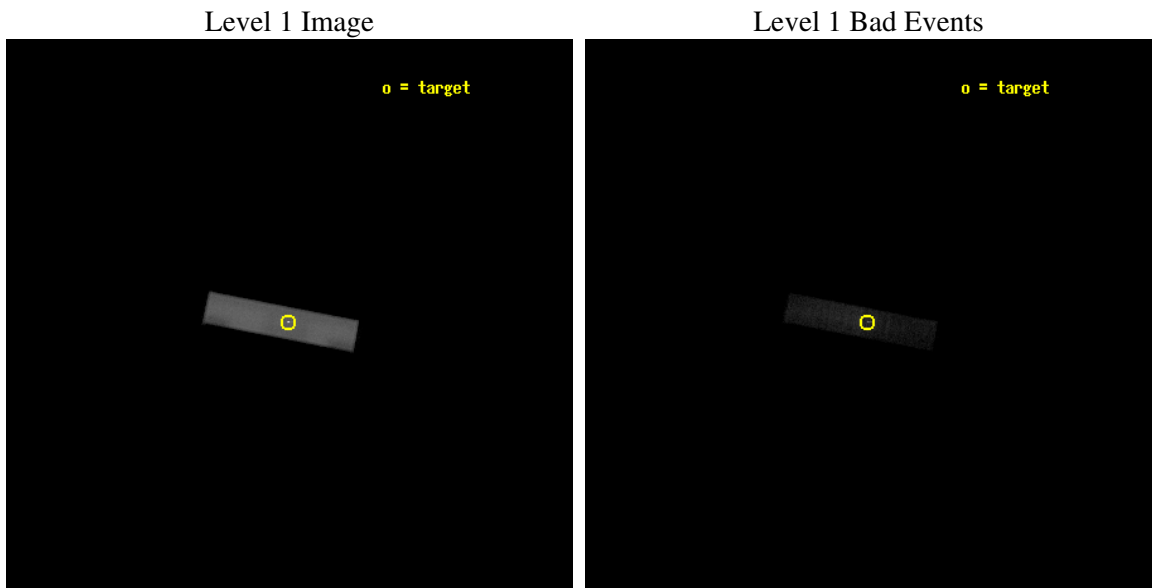
seq_num	290492
obs_id	6000
title	AO6B Calibration Observations to Monitor the Spatial Variations in the HRC-S Gain
observer	Dr. CXC Calibration
object	ArLac
ra_targ	332.17
dec_targ	45.742306
ra_nom	332.16352466835
dec_nom	45.741600875119
roll_nom	190.85034110615
revision	2
ontime	3184.9313962758
livetime	3125.4009399057
l2events	349348



2 OBI

2.1 OBI

2.1.1 Images



2.1.2 Parameters

obi_num	0
ascdsver	7.6.7.1
caldbver	3.2.1
date	2006-03-23T14:40:46
revision	2

sched_exp_time	3000.000000
ontime	3185.9563963413
l1events	466009

2.1.3 Events

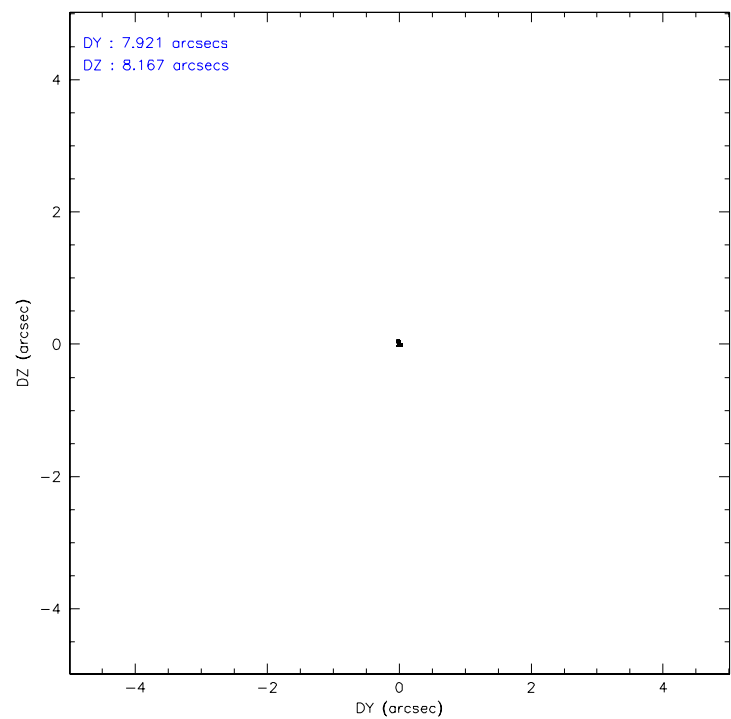
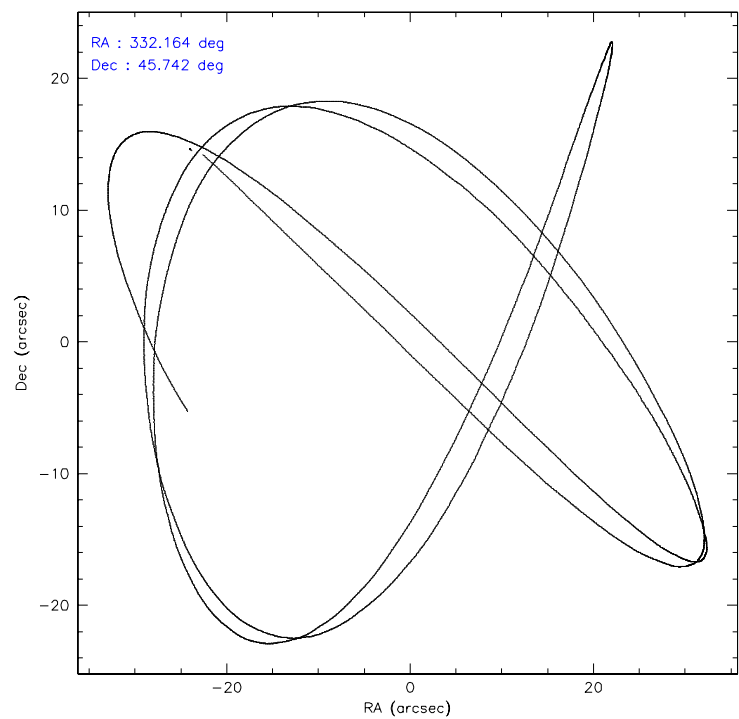
Level 1 Events

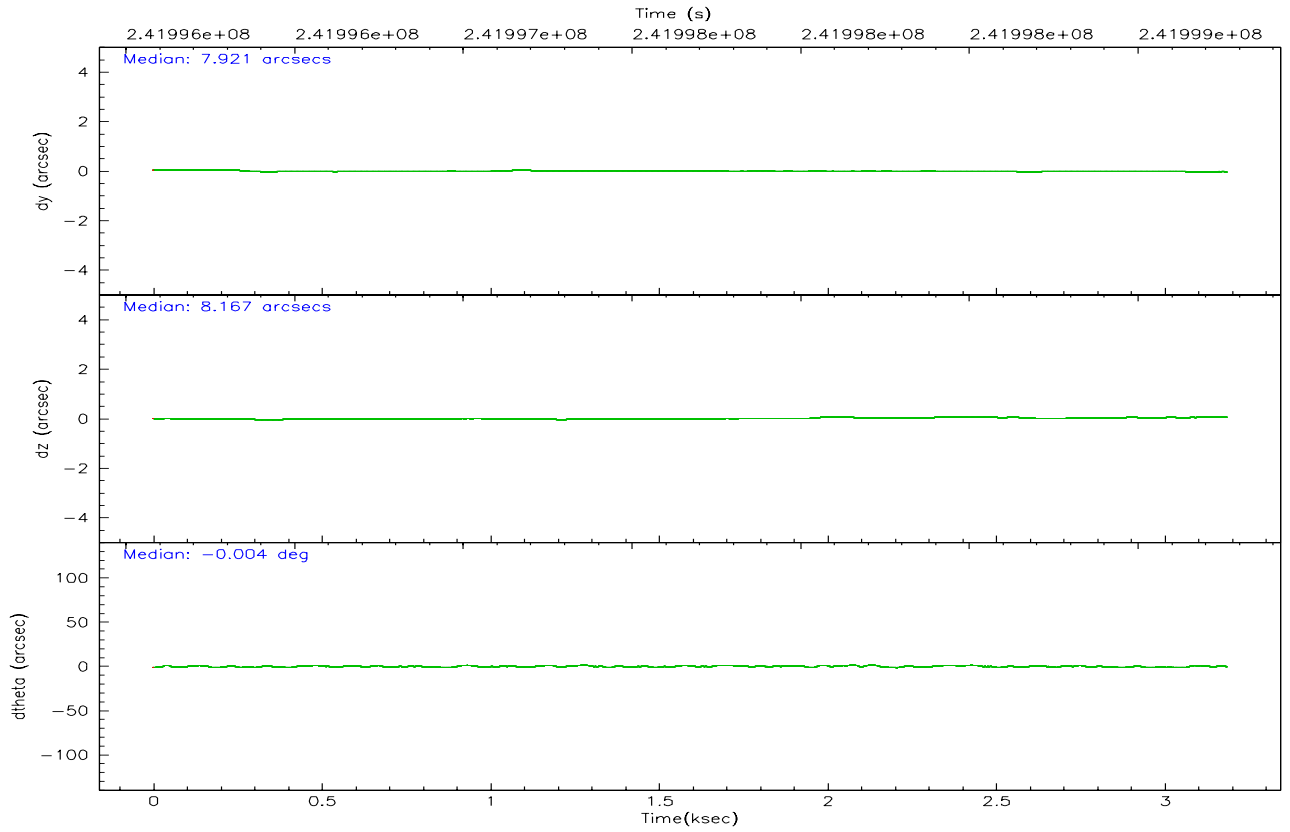
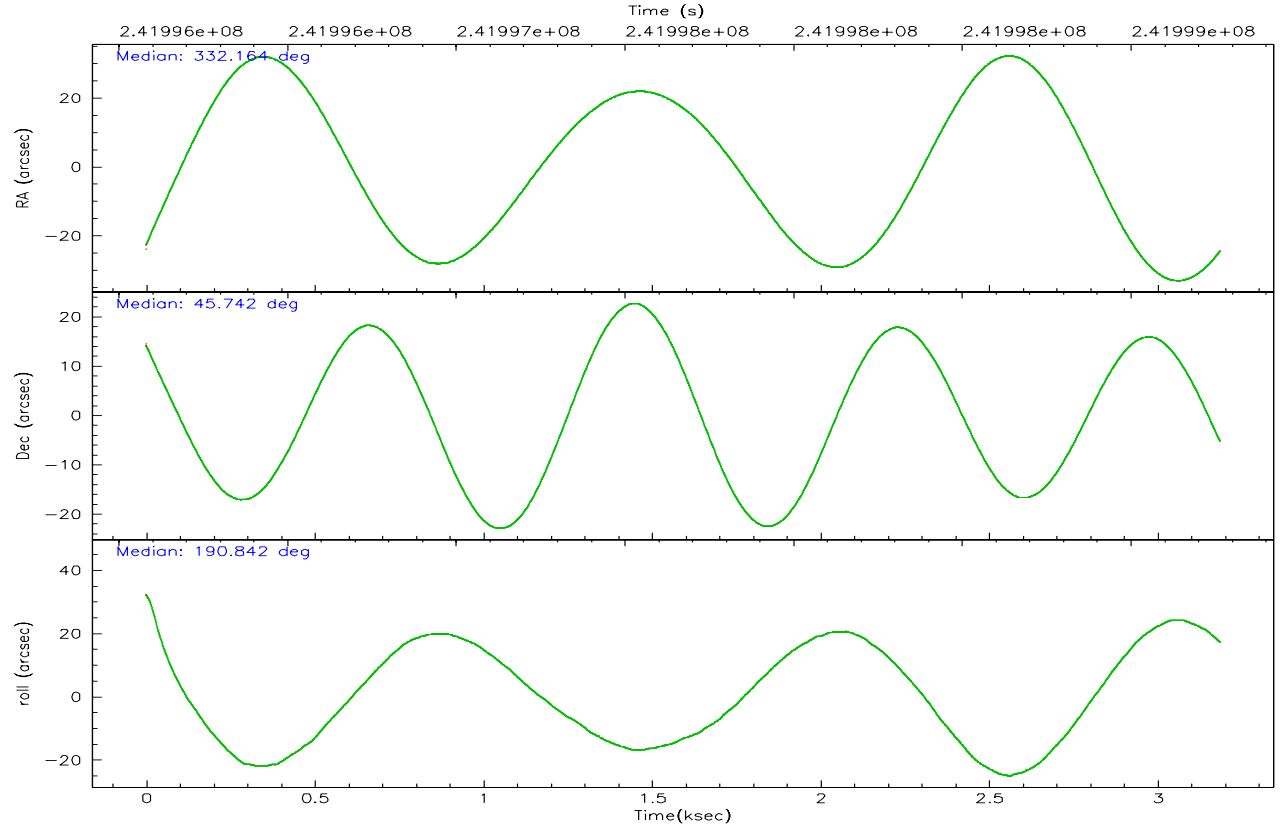
	segment 1	segment 2	segment 3
level 1 events	0	466009	0
rejected events	0	104217	0
rejected %	0%	22%	0%

2.2 Compared Parameters

Parameter	Planned	Actual	Parameter	Planned	Actual
Instrument	HRC	HRC	Obspar format version number	6	6
Detector	HRC-S	HRC-S	Obspar file type	PREDICTED	ACTUAL
Grating	NONE	NONE	Obspar update status	NONE	UPDATED
Data mode	OBSERVING	OBSERVING			
Observation mode	POINTING	POINTING			
Pointing RA	332.193022	332.1635246683462			
Pointing Dec	45.761306	45.74160087511945			
Pointing Roll	190.761829	190.8503411061502			
Window start time	239241664.184000	239241664.184000			
Window stop time	247104064.184000	247104064.184000			
SIM focus pos (mm)	-1.429586	-1.428180813131781			
SIM defocus (mm)	0.1037507710433287	0.1051558262725154			
SIM translation stage pos (mm)	250.455976	250.466033080201			
SIM translation stage offset (mm)	0	-0.01005468664627074			
Observation start time	241996264.184000	241995529.25833			
Observation start date	2005-09-01T21:10:00	2005-09-01T20:58:49			
Observation end time	241999264.184000	241999398.6335			
Observation end date	2005-09-01T22:00:00	2005-09-01T22:03:18			

2.3 Aspect



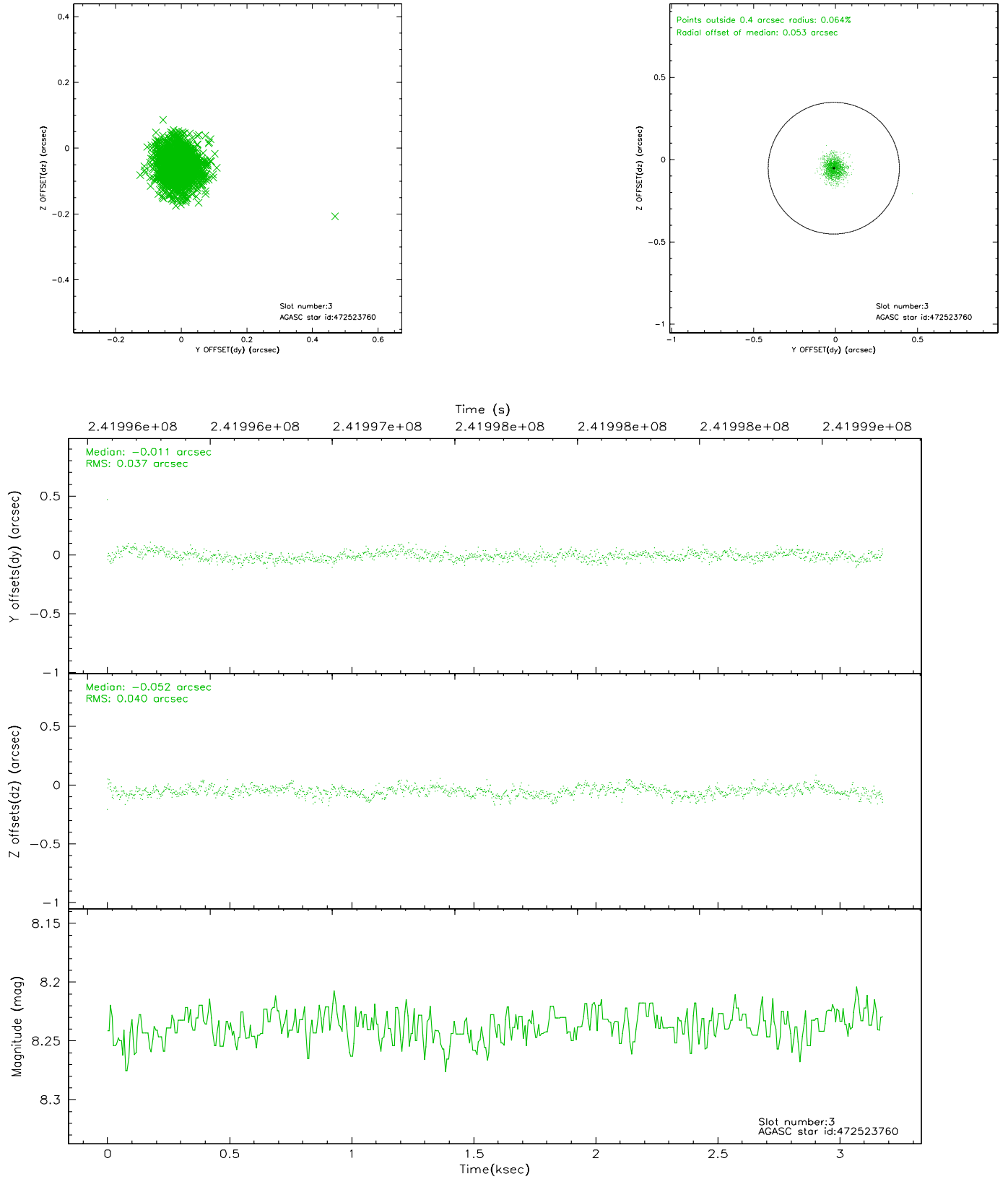


Slot Statistics

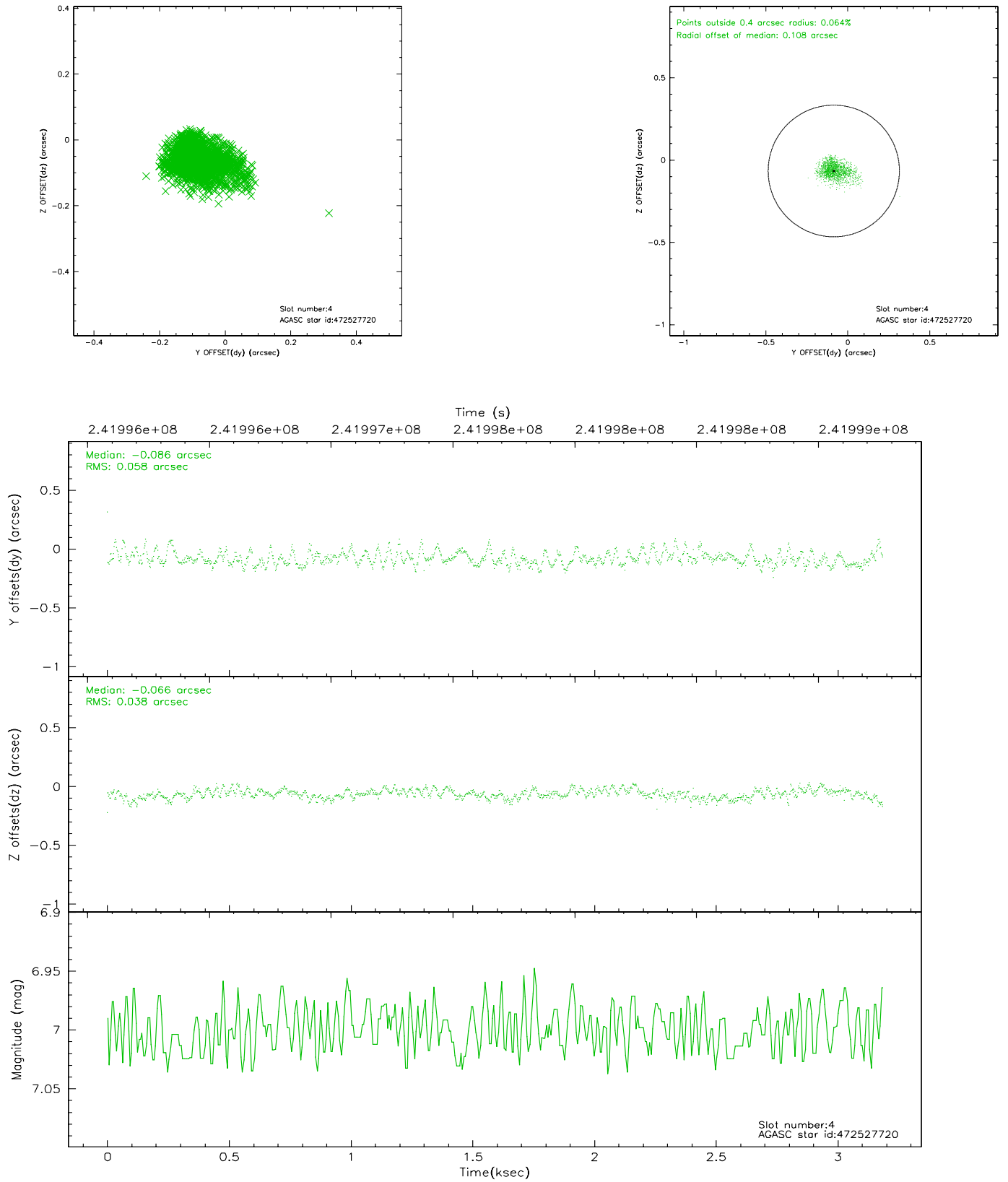
slot	status	id	mag	n_pts	med_dy	med_dz	dr1	dr2	ra	dec	mean_y	mean_z
0	FID	HRC-S-1	7.04	778	0.140	-0.136	0.008	0.012	0.000000	0.000000	-1162.09	-456.80
1	FID	HRC-S-2	7.03	778	0.159	-0.117	0.005	0.009	0.000000	0.000000	1236.12	-450.00
2	FID	HRC-S-3	7.04	778	0.092	-0.049	0.007	0.012	0.000000	0.000000	-1163.27	572.24
3	GUIDE	472523760	8.24	1551	-0.011	-0.052	0.056	0.094	331.645363	45.403260	1600.27	1003.57
4	GUIDE	472527720	7.00	1555	-0.086	-0.066	0.071	0.125	331.460205	45.112509	2264.93	1939.75
5	GUIDE	472535576	7.86	1555	-0.129	0.080	0.065	0.106	331.438373	46.291802	1488.22	-2233.77
6	GUIDE	472665256	9.00	1553	0.210	0.023	0.083	0.134	332.808125	46.195041	-1796.58	-1255.09
7	GUIDE	472533912	9.16	1552	0.001	0.016	0.103	0.174	331.791136	46.368695	571.79	-2337.55

2.4 Star Slots

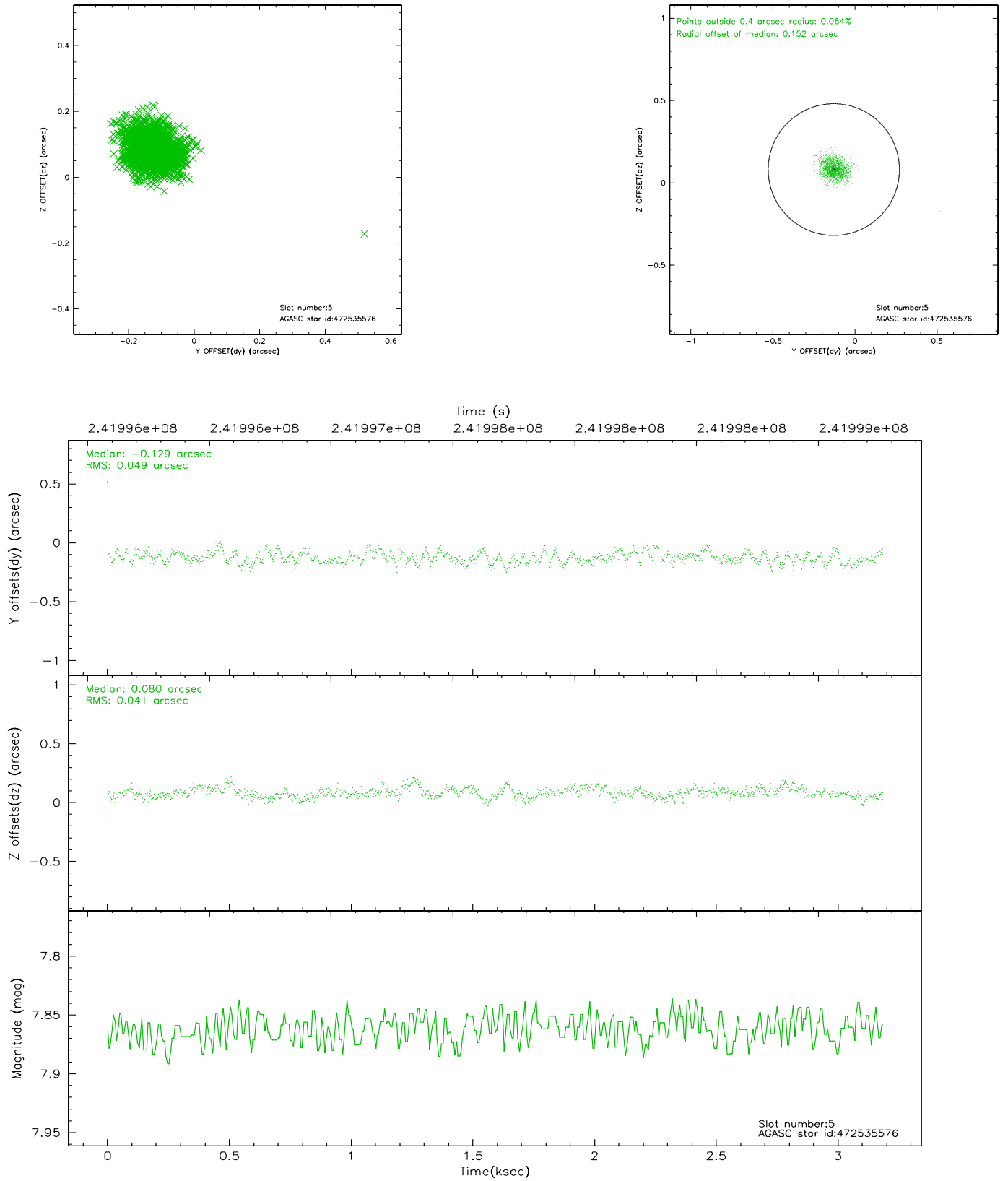
2.4.1 Slot 3



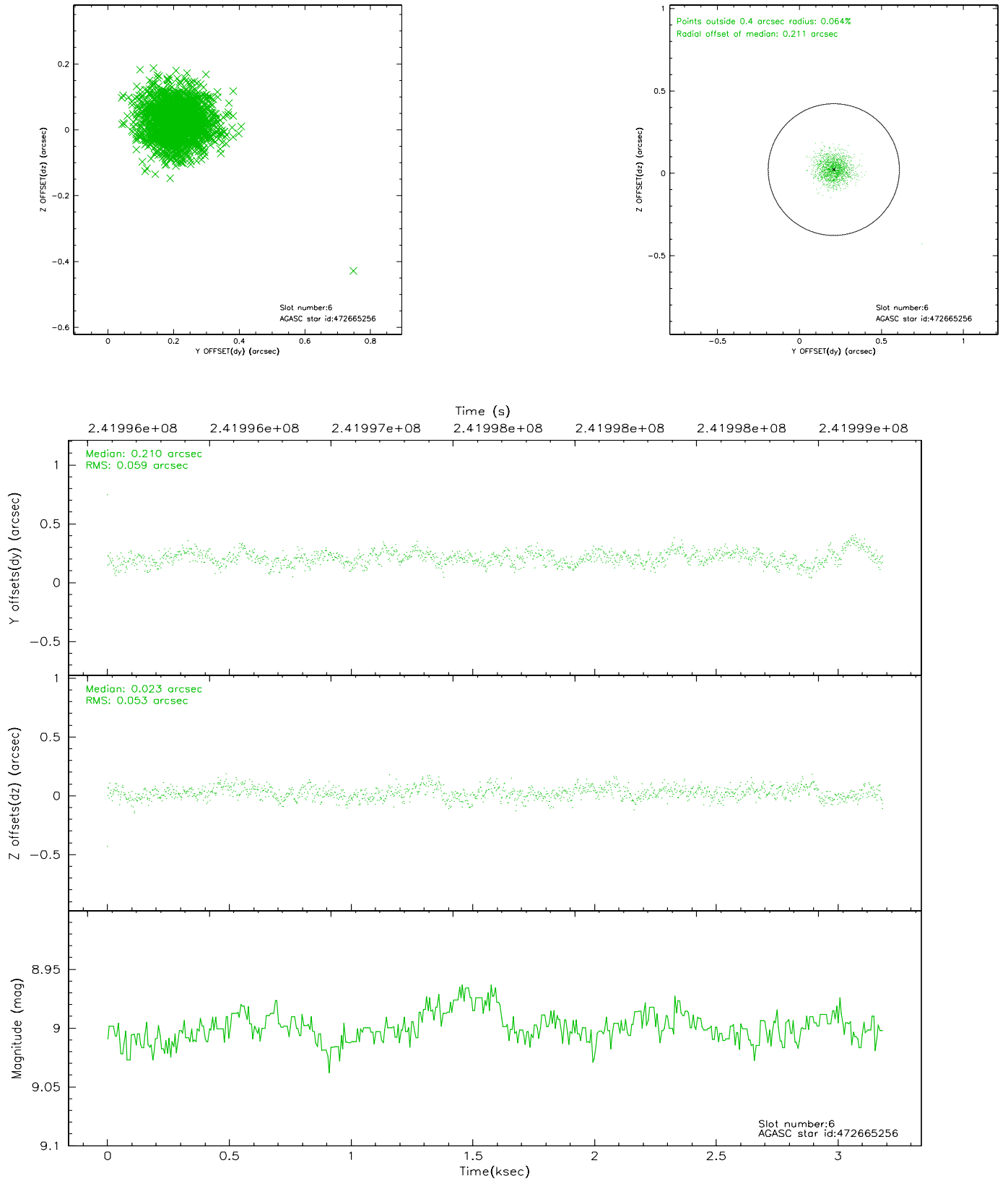
2.4.2 Slot 4



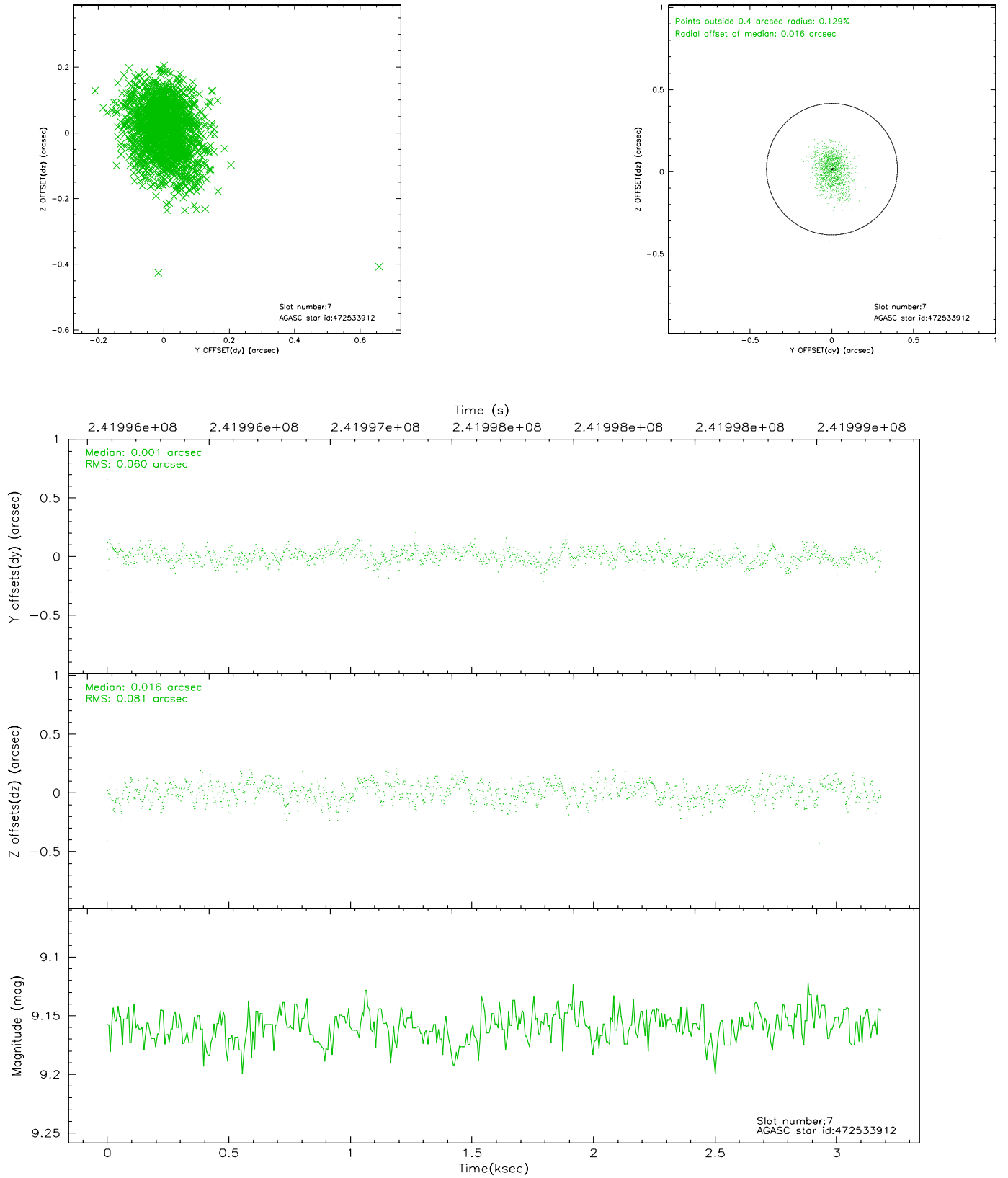
2.4.3 Slot 5



2.4.4 Slot 6

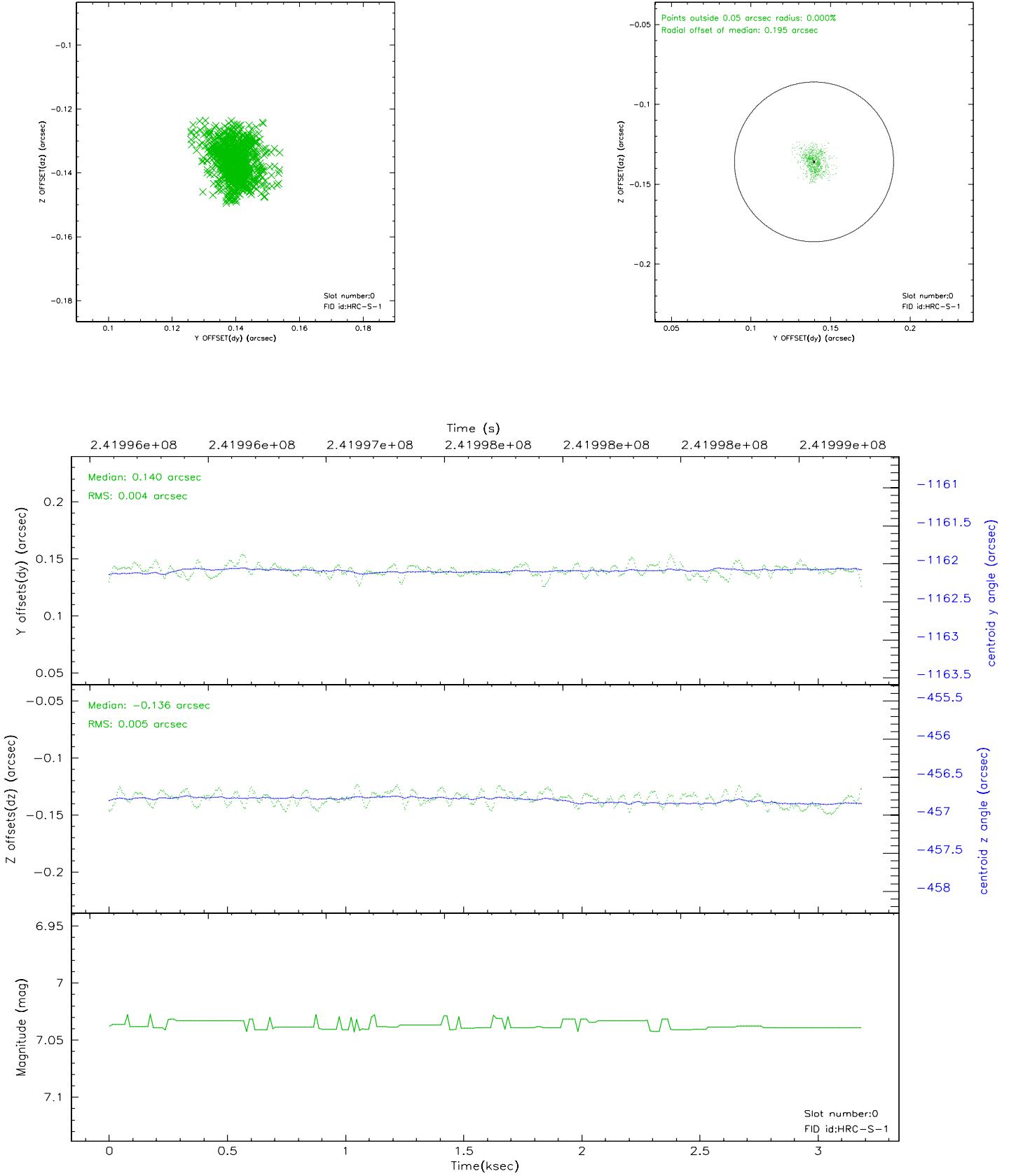


2.4.5 Slot 7

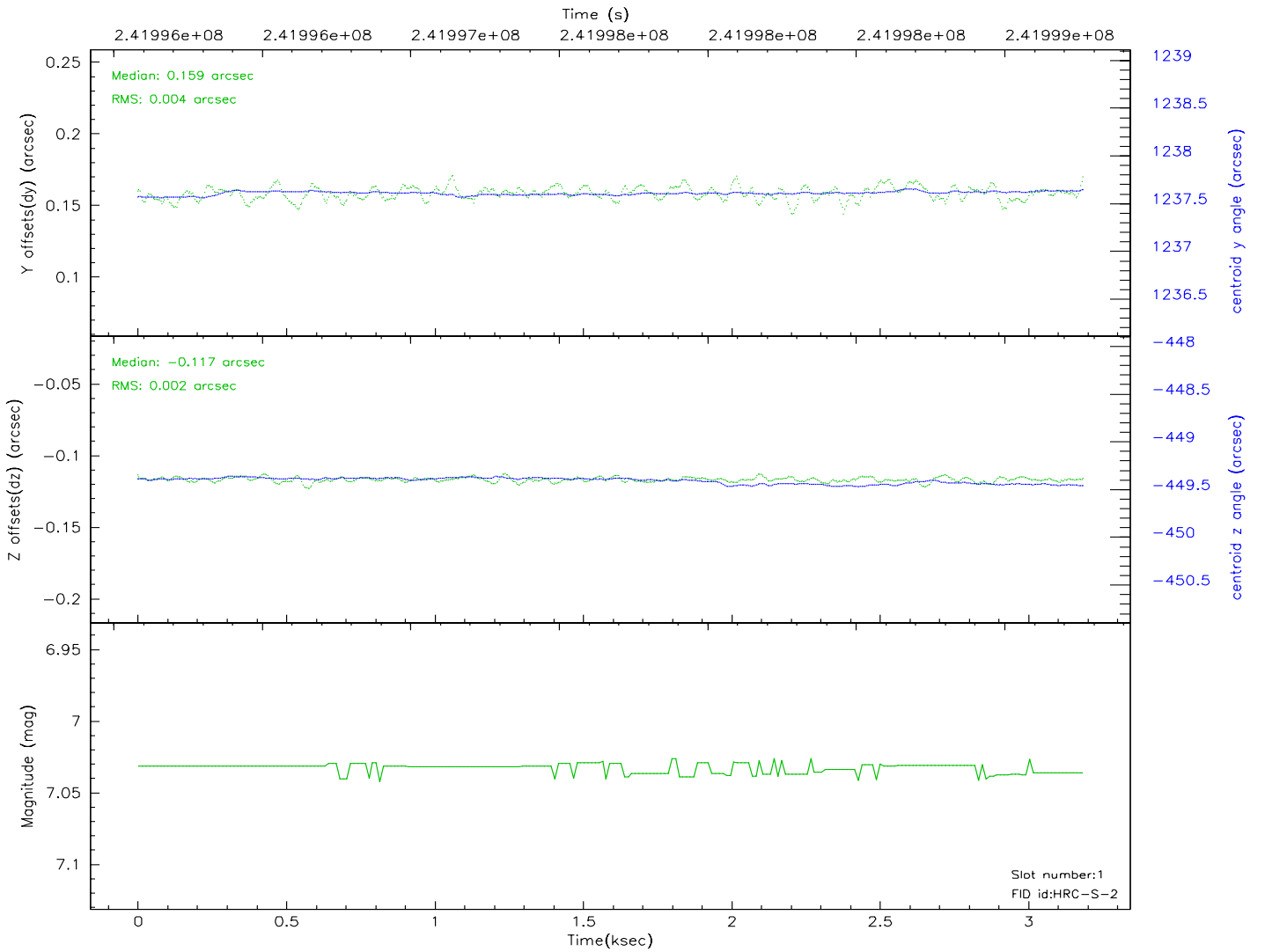
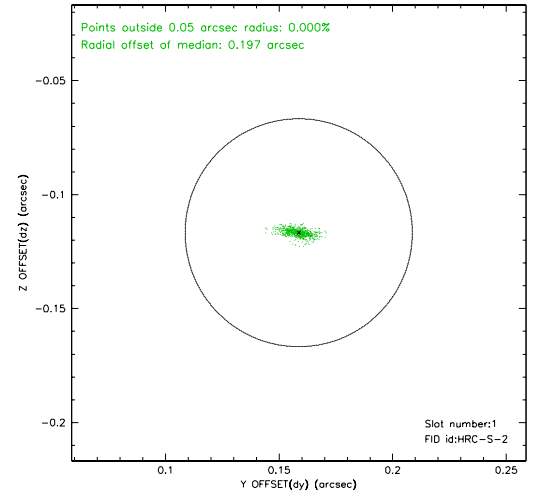
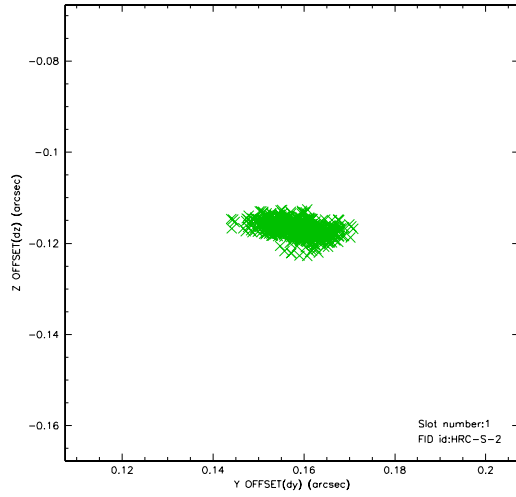


2.5 FID Slots

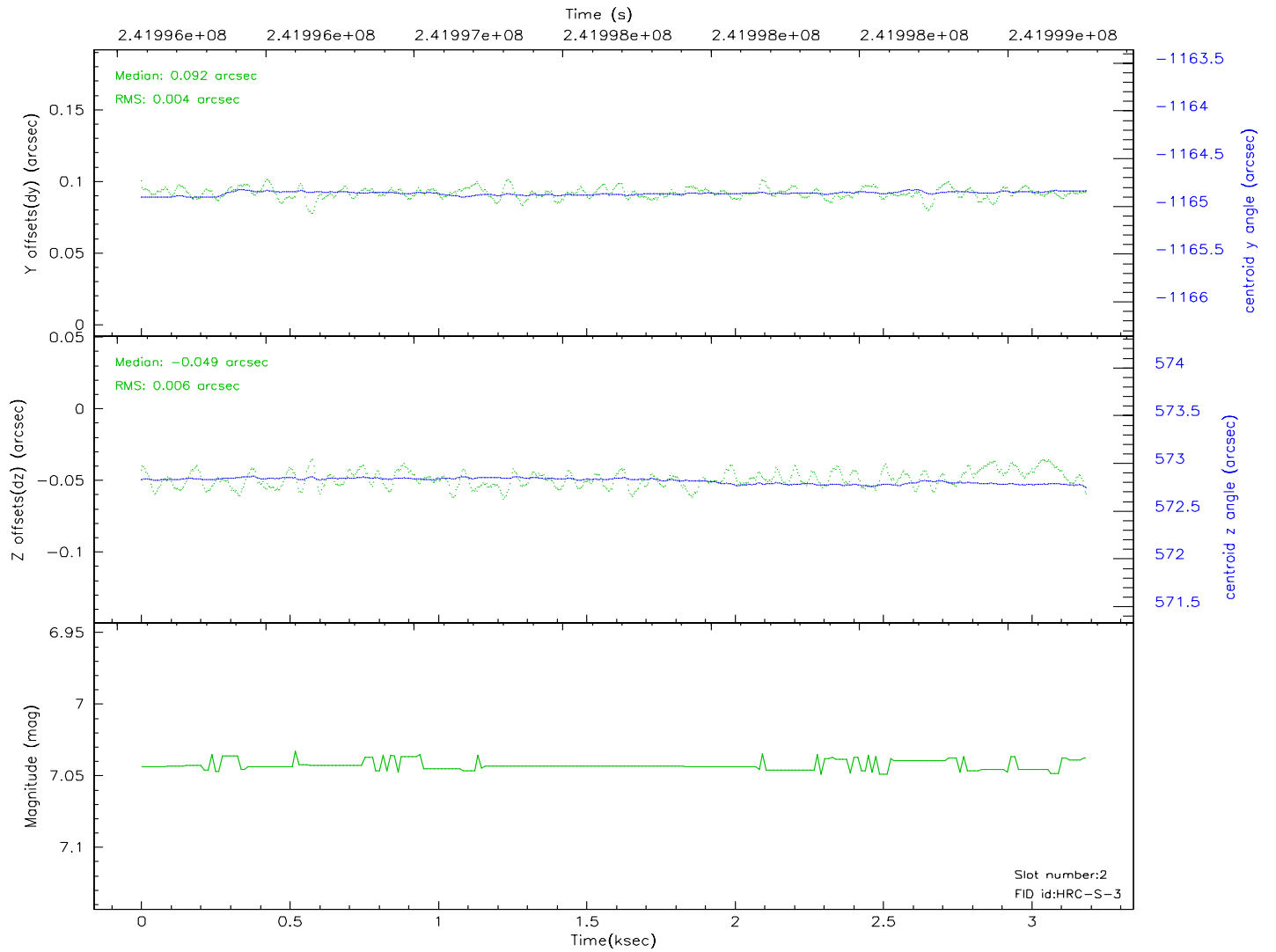
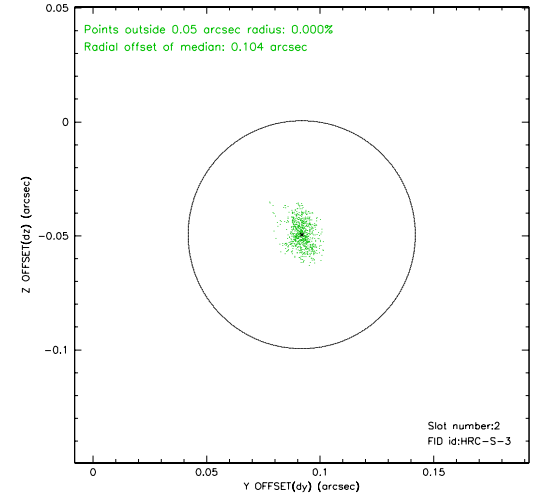
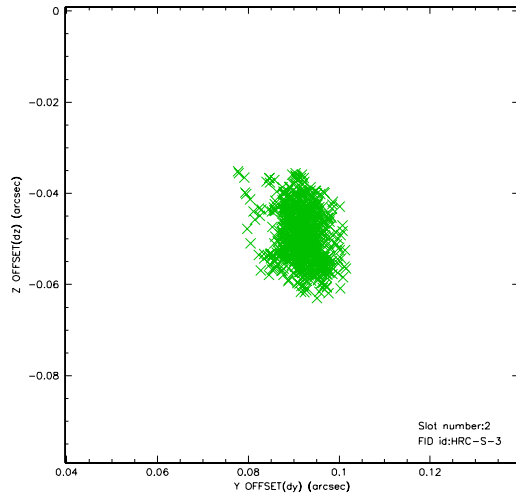
2.5.1 Slot 0



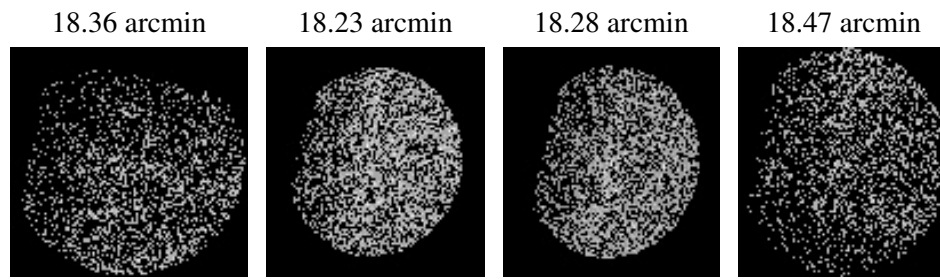
2.5.2 Slot 1



2.5.3 Slot 2



3 Point Sources



A Summary

A.1 Status

V&V Scientist	Jen Lauer
V&V Date (YYYY-MM-DD)	2006.03.23
V&V Edition	1
V&V Disposition and Status	OK
V&V Charge Time	3.184931

A.2 Comments

Window constraint met.