

V&V Reference Report

L2 ASCDS Version : 7.6.7.1

Observation 59920 - L2 Version 002
Chandra X-Ray Center

L2 Processing Date : Apr 8 2006

Contents

1	Front	2
2	OBI	3
2.1	OBI	3
2.1.1	Images	3
2.1.2	Bias	3
2.1.3	Parameters	4
2.1.4	Events	4
2.2	Compared Parameters	5
2.3	Aspect	6
2.4	Star Slots	8
2.5	FID Slots	8
A	Summary	9
A.1	Status	9
A.2	Comments	9

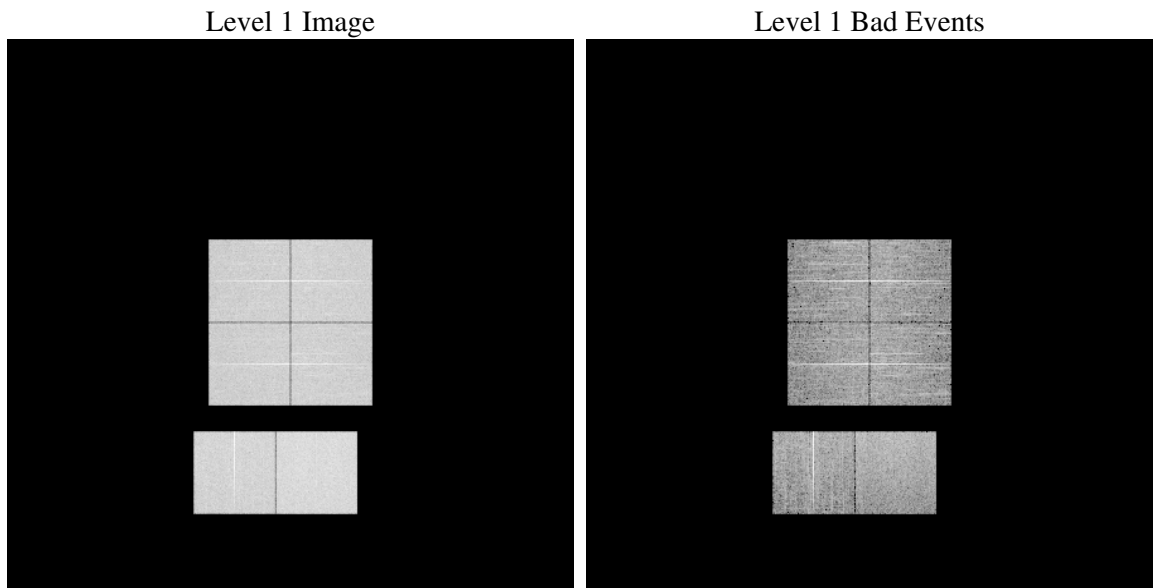
1 Front

seq_num	
obs_id	59920
title	ACIS-012367 diagnostics
observer	CHANDRA engineering request/realtime commanding
object	
dtcycle	0
cycle	P
ra_targ	0.0
dec_targ	0.0
ra_nom	112.76339037087
dec_nom	42.11540201747
roll_nom	118.93330993383
revision	2
ontime	7798.3999709487
livetime	7699.6519348838
ontime0	6513.2317036986
ontime1	6832.5880133808
ontime2	6320.5129280984
ontime3	6367.305182457
ontime6	6937.9234413207
ontime7	7798.3999709487
l2events	1050706

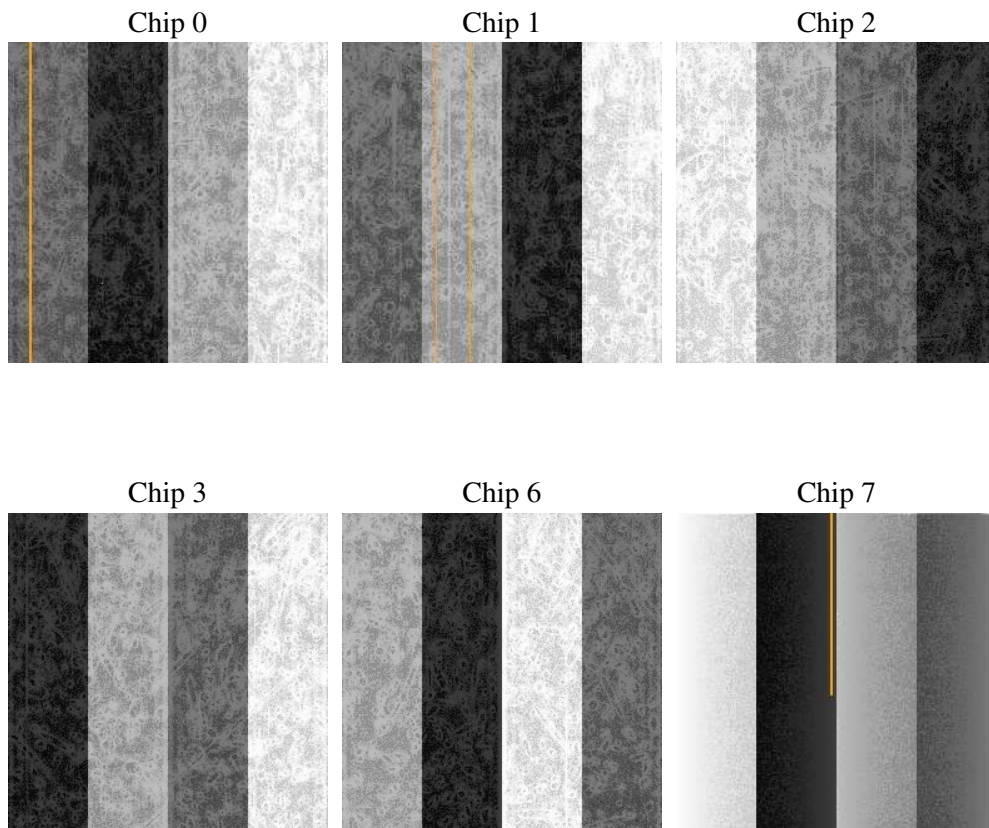
2 OBI

2.1 OBI

2.1.1 Images



2.1.2 Bias



2.1.3 Parameters

obi_num	1
ascdsver	7.6.7.1
caldsver	3.2.1
date	2006-04-09T01:37:51
revision	2

sched_exp_time	0.0
ontime	7801.1090310514
ontime0	6514.4398547113
ontime1	6835.2970734835
ontime2	6323.2219882011
ontime3	6368.5954134762
ontime6	6939.0084723532
ontime7	7801.1090310514
l1events	1409842

2.1.4 Events

	ccd 0	ccd 1	ccd 2	ccd 3	ccd 6	ccd 7
level 1 events	219063	228913	215301	221916	245142	279507
rejected events	47743	48497	47184	50800	53354	58487
rejected %	21%	21%	21%	22%	21%	20%

	ccd 0	ccd 1	ccd 2	ccd 3	ccd 6	ccd 7
grade 0 events	94696	98816	94791	96393	104017	37649
	43%	43%	44%	43%	42%	13%
grade 1 events	555	475	583	617	550	111
	0%	0%	0%	0%	0%	0%
grade 2 events	29673	32317	27830	29145	33351	66972
	13%	14%	12%	13%	13%	23%
grade 3 events	11037	11486	10894	11215	11963	15854
	5%	5%	5%	5%	4%	5%
grade 4 events	11034	11435	11086	11037	11871	15444
	5%	4%	5%	4%	4%	5%
grade 5 events	2928	3221	2747	3055	3354	6876
	1%	1%	1%	1%	1%	2%
grade 6 events	24880	26362	23516	23326	30586	85101
	11%	11%	10%	10%	12%	30%
grade 7 events	44260	44801	43854	47128	49450	51500
	20%	19%	20%	21%	20%	18%

2.2 Compared Parameters

Parameter	Planned	Actual	Parameter	Planned	Actual
Instrument	ACIS	ACIS	Obspar format version number	6	6
Detector	ACIS-012367	ACIS-012367	Obspar file type	PREDICTED	ACTUAL
Grating	NONE	NONE	Obspar update status	NONE	UPDATED
Data mode	FAINT	FAINT	On-chip summing requested	N	N
Observation mode	SECONDARY	SECONDARY	Subarray requested	NONE	NONE
Pointing RA	0	112.7633903708748	Alternating exposures requested	N	N
Pointing Dec	0	42.11540201747021	Primary exposure time	3.2	3.2
Pointing Roll	0.0	118.9333099338337			
SIM focus pos (mm)	-0.782348	-1.428180813131781			
SIM defocus (mm)	0	0.1051558262725154			
SIM translation stage pos (mm)	-233.592463	250.466033080201			
SIM translation stage offset (mm)	0	-0.01005468664627074			
Observation start time	219546293.424897	219546292.39991			
Observation start date	2004-12-16T01:04:53	2004-12-16T01:04:52			
Observation end time	219561354.775575	219561353.75058			
Observation end date	2004-12-16T05:15:55	2004-12-16T05:15:53			
Read mode	TIMED	TIMED			

2.3 Aspect

2.4 Star Slots

2.5 FID Slots

A Summary

A.1 Status

V&V Scientist	Jen Lauer
V&V Date (YYYY-MM-DD)	2006.04.10
V&V Edition	1
V&V Disposition and Status	OK
V&V Charge Time	7.79839997

A.2 Comments