

V&V Reference Report

L2 ASCDS Version : 7.6.7.1

Observation 59910 - L2 Version 002
Chandra X-Ray Center

L2 Processing Date : Apr 7 2006

Contents

1	Front	2
2	OBI	3
2.1	OBI	3
2.1.1	Images	3
2.1.2	Bias	3
2.1.3	Parameters	4
2.1.4	Events	4
2.2	Compared Parameters	5
2.3	Aspect	6
2.4	Star Slots	8
2.5	FID Slots	8
A	Summary	9
A.1	Status	9
A.2	Comments	9

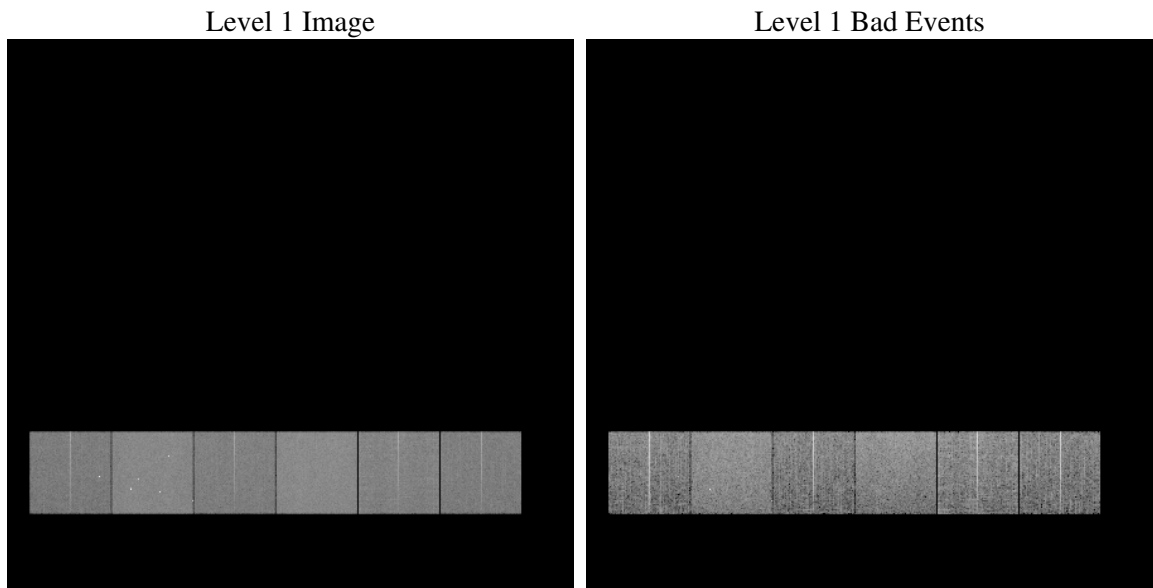
1 Front

seq_num	
obs_id	59910
title	ACIS-456789 diagnostics
observer	CHANDRA engineering request/realtime commanding
object	
dtcycle	0
cycle	P
ra_targ	0.0
dec_targ	0.0
ra_nom	93.670905759058
dec_nom	34.993023777774
roll_nom	162.27779581273
revision	2
ontime	7794.5856814384
livetime	7695.885944204
ontime4	5730.2106108963
ontime5	7794.6267214417
ontime6	6119.0863729119
ontime7	7794.5856814384
ontime8	6349.2773530185
ontime9	6063.8668878675
l2events	1021071

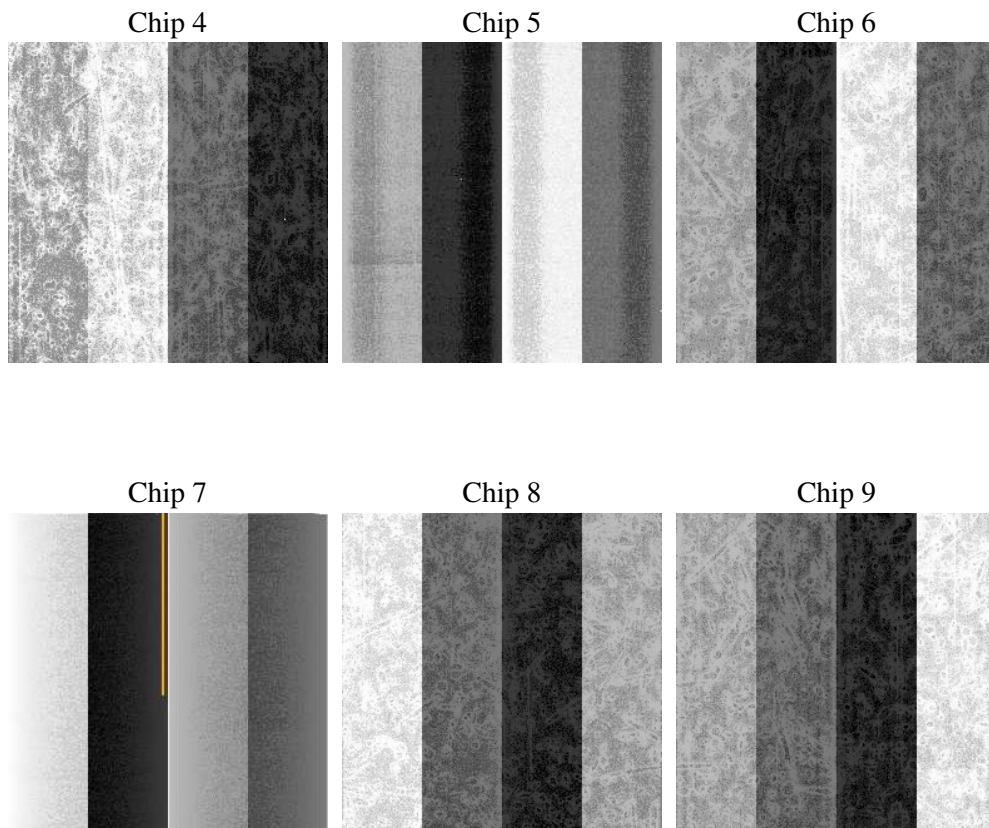
2 OBI

2.1 OBI

2.1.1 Images



2.1.2 Bias



2.1.3 Parameters

obi_num	1
ascdsver	7.6.7.1
caldsver	3.2.1
date	2006-04-07T19:33:00
revision	2

sched_exp_time	0.0
ontime	7797.853141129
ontime4	5733.354950577
ontime5	7797.853141129
ontime6	6122.2717525959
ontime7	7797.853141129
ontime8	6352.3806527257
ontime9	6067.1753875613
l1events	1409492

2.1.4 Events

	ccd 4	ccd 5	ccd 6	ccd 7	ccd 8	ccd 9
level 1 events	196789	268438	217501	281826	237107	207831
rejected events	48836	63752	47895	58721	56418	47130
rejected %	24%	23%	22%	20%	23%	22%

	ccd 4	ccd 5	ccd 6	ccd 7	ccd 8	ccd 9
grade 0 events	86023	23843	92309	38634	97782	88239
	43%	8%	42%	13%	41%	42%
grade 1 events	673	150	478	118	554	571
	0%	0%	0%	0%	0%	0%
grade 2 events	23571	94681	29345	66519	31545	27632
	11%	35%	13%	23%	13%	13%
grade 3 events	9835	6353	10563	16308	11968	10342
	4%	2%	4%	5%	5%	4%
grade 4 events	9644	6259	10735	15886	11954	10295
	4%	2%	4%	5%	5%	4%
grade 5 events	2822	6345	2947	7056	3824	3373
	1%	2%	1%	2%	1%	1%
grade 6 events	18972	73624	26746	85842	27543	24264
	9%	27%	12%	30%	11%	11%
grade 7 events	45249	57183	44378	51463	51937	43115
	22%	21%	20%	18%	21%	20%

2.2 Compared Parameters

Parameter	Planned	Actual	Parameter	Planned	Actual
Instrument	ACIS	ACIS	Obspar format version number	6	6
Detector	ACIS-456789	ACIS-456789	Obspar file type	PREDICTED	ACTUAL
Grating	NONE	NONE	Obspar update status	NONE	UPDATED
Data mode	FAINT	FAINT	On-chip summing requested	N	N
Observation mode	SECONDARY	SECONDARY	Subarray requested	NONE	NONE
Pointing RA	0	93.67090575905753	Alternating exposures requested	N	N
Pointing Dec	0	34.99302377777408	Primary exposure time	3.2	3.2
Pointing Roll	0.0	162.2777958127335			
SIM focus pos (mm)	-0.684267	-0.6828225247311905			
SIM defocus (mm)	0	0.8505141146731063			
SIM translation stage pos (mm)	-190.132523	250.466033080201			
SIM translation stage offset (mm)	0	-0.01005468664627074			
Observation start time	220003293.795484	220003292.77049			
Observation start date	2004-12-21T08:01:34	2004-12-21T08:01:32			
Observation end time	220042657.897257	220042656.87226			
Observation end date	2004-12-21T18:57:38	2004-12-21T18:57:36			
Read mode	TIMED	TIMED			

2.3 Aspect

2.4 Star Slots

2.5 FID Slots

A Summary

A.1 Status

V&V Scientist	Beth Sundheim
V&V Date (YYYY-MM-DD)	2006.04.07
V&V Edition	1
V&V Disposition and Status	OK
V&V Charge Time	7.79458568

A.2 Comments