

V&V Reference Report

L2 ASCDS Version : 8.5.1.1

Observation 59670 - L2 Version 3
Chandra X-Ray Center

L2 Processing Date : Dec 23 2012

Contents

1	Front	2
2	OBI	3
2.1	OBI	3
2.1.1	Images	3
2.1.2	Bias	3
2.1.3	Parameters	4
2.1.4	Events	4
2.2	Compared Parameters	5
2.3	Star Slots	6
2.4	FID Slots	6
A	Summary	7
A.1	Status	7
A.2	Comments	7

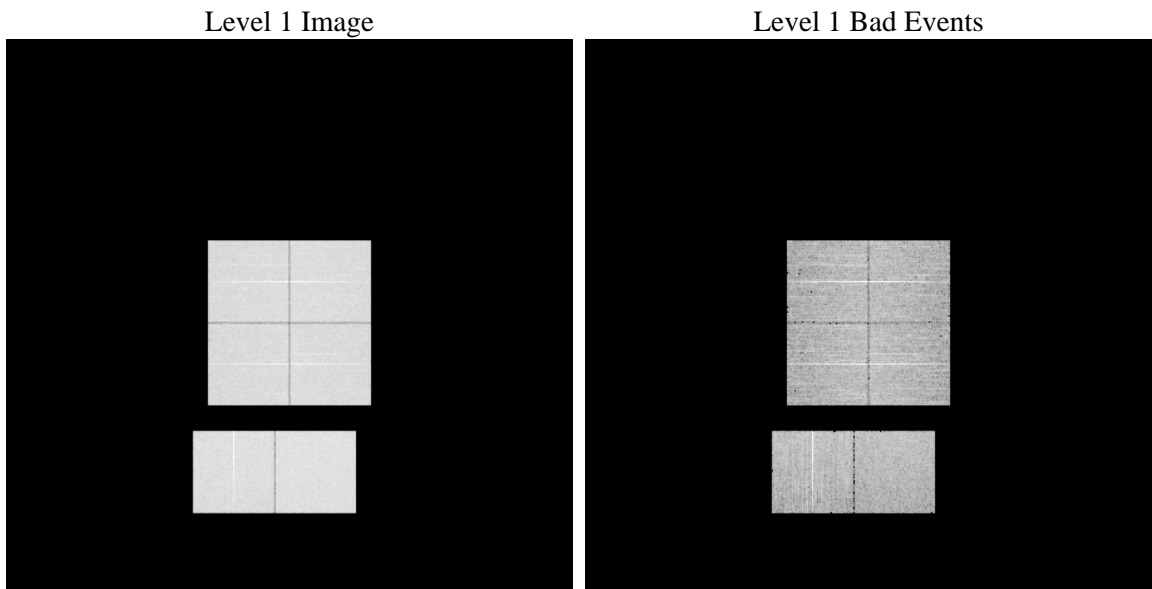
1 Front

seq_num	 	Sequence number
obs_id	59670	Observation id
title	ACIS-012367 diagnostics	Proposal title
observer	CHANDRA engineering request/realtime commanding	Principal investig
object	 	Source name
dtcycle	0	
cycle	P	events from which exps? Prim/Second/Both
ra_targ	0.0	Observer's specified target RA [deg]
dec_targ	0.0	Observer's specified target Dec [deg]
ra_nom	254.97374045145	Nominal RA [deg]
dec_nom	4.0115486413402	Nominal Dec [deg]
roll_nom	123.40104025391	Nominal Roll [deg]
revision	3	Processing version of data
ontime	8035.1999700665	Sum of GTIs [s]
livetime	7933.453429829	Livetime [s]
ontime0	7354.5946270525	Sum of GTIs [s]
ontime1	7698.1382590234	Sum of GTIs [s]
ontime2	7079.1115318537	Sum of GTIs [s]
ontime3	7221.7142458558	Sum of GTIs [s]
ontime6	7743.5118040144	Sum of GTIs [s]
ontime7	8035.1999700665	Sum of GTIs [s]
l2events	1069528	Number of level 2 events

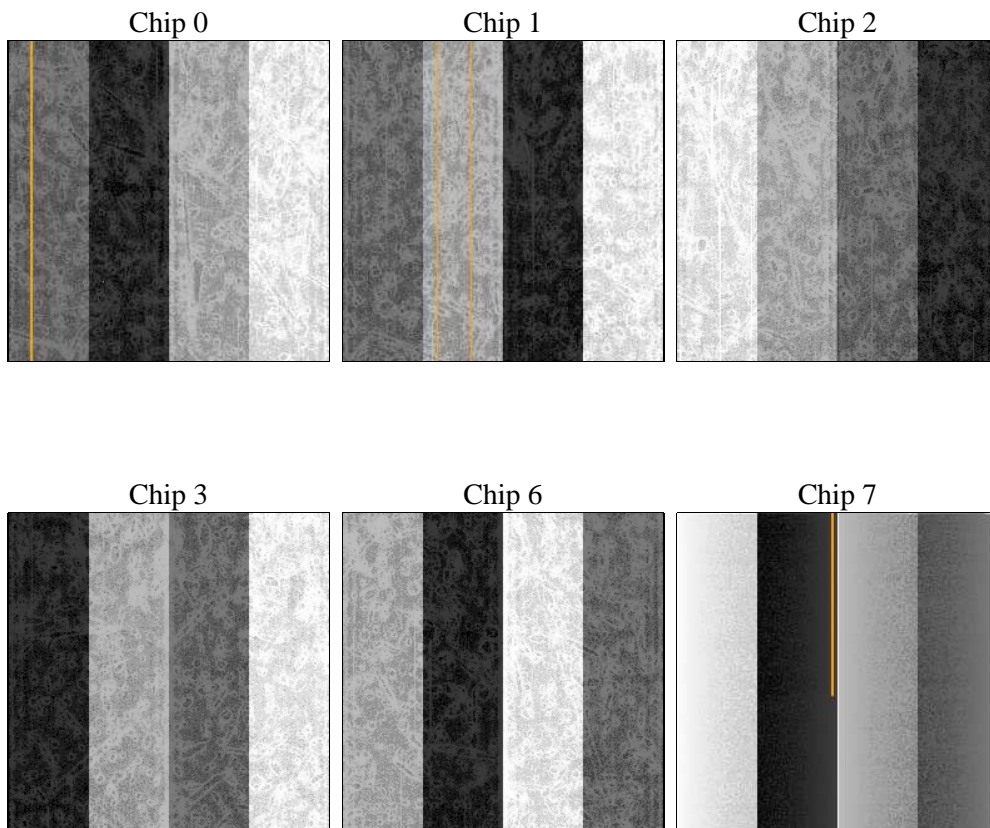
2 OBI

2.1 OBI

2.1.1 Images



2.1.2 Bias



2.1.3 Parameters

obi_num	0	Obi number	sched_exp_time	0.0	[s] Scheduled observation exposure time
ascdsver	8.5.1.1	Processing system revision	ontime	8035.1999700665	Sum of GTIs [s]
caldsver	4.5.5	 	ontime0	7354.5946270525	Sum of GTIs [s]
date	2012-12-23T05:00:49	Date and time of file creation	ontime1	7698.1382590234	Sum of GTIs [s]
revision	3	Processing version of data	ontime2	7079.1115318537	Sum of GTIs [s]
			ontime3	7221.7142458558	Sum of GTIs [s]
			ontime6	7743.5118040144	Sum of GTIs [s]
			ontime7	8035.1999700665	Sum of GTIs [s]
			l1events	1446881	Number of level 1 events

2.1.4 Events

	ccd 0	ccd 1	ccd 2	ccd 3	ccd 6	ccd 7		ccd 0	ccd 1	ccd 2	ccd 3	ccd 6	ccd 7
level 1 events	229625	237328	225637	229959	254194	270138	grade 0 events	97512	100885	96257	97874	105621	51546
rejected events	52432	52196	53502	54703	58511	51388		42%	42%	42%	42%	41%	19%
rejected %	22%	21%	23%	23%	23%	19%	grade 1 events	621	528	620	619	529	174
								0%	0%	0%	0%	0%	0%
							grade 2 events	30717	33208	29121	29954	33860	47382
								13%	13%	12%	13%	13%	17%
							grade 3 events	11735	11829	11342	11420	12296	21588
								5%	4%	5%	4%	4%	7%
							grade 4 events	11525	11821	11206	11538	12314	21832
								5%	4%	4%	5%	4%	8%
							grade 5 events	3204	3421	2979	3351	3774	8952
								1%	1%	1%	1%	1%	3%
							grade 6 events	25783	27476	24300	24552	31659	76493
								11%	11%	10%	10%	12%	28%
							grade 7 events	48528	48160	49812	50651	54141	42171
								21%	20%	22%	22%	21%	15%

2.2 Compared Parameters

Parameter	Planned	Actual
Instrument	ACIS	ACIS
Detector	ACIS-012367	ACIS-012367
Grating	NONE	NONE
Data mode	FAINT	FAINT
Observation mode	SECONDARY	SECONDARY
[deg] Pointing RA	0	254.9737404514547
[deg] Pointing Dec	0	4.011548641340195
[deg] Pointing Roll	0.0	123.4010402539113
[mm] SIM focus pos	-0.782348	-0.7809083437167272
[mm] SIM defocus	0	0.7524282956875696
[mm] SIM translation stage pos	-233.592463	250.466033080201
[mm] SIM translation stage offset	0	-0.01005468664627074
[s] Observation start time (MET)	231688747.374625	231688746.34964
Observation start date	2005-05-05T13:59:07	2005-05-05T13:59:06
[s] Observation end time (MET)	231713761.475764	231713760.45078
Observation end date	2005-05-05T20:56:01	2005-05-05T20:56:00
Read mode	TIMED	TIMED

Parameter	Planned	Actual
Obspar format version number	7	7
Obspar file type	PREDICTED	ACTUAL
Obspar update status	NONE	UPDATED
On-chip summing requested	N	N
Subarray requested	NONE	NONE
Alternating exposures requested	N	N
[s] Primary exposure time	3.2	3.2

2.3 Star Slots

2.4 FID Slots

A Summary

A.1 Status

V&V Scientist	Jen Lauer
V&V Date (YYYY-MM-DD)	2013.01.15
V&V Edition	1
V&V Disposition and Status	OK
V&V Charge Time	8.0351999700665

A.2 Comments