

V&V Reference Report

L2 ASCDS Version : 7.6.7

Observation 59670 - L2 Version 002
Chandra X-Ray Center

L2 Processing Date: Mar 3 2006

Contents

1	Front	2
2	OBI	3
2.1	OBI	3
2.1.1	Images	3
2.1.2	Bias	3
2.1.3	Parameters	4
2.1.4	Events	4
2.2	Compared Parameters	5
2.3	Aspect	6
2.4	Star Slots	8
2.5	FID Slots	8
A	Summary	9
A.1	Status	9
A.2	Comments	9

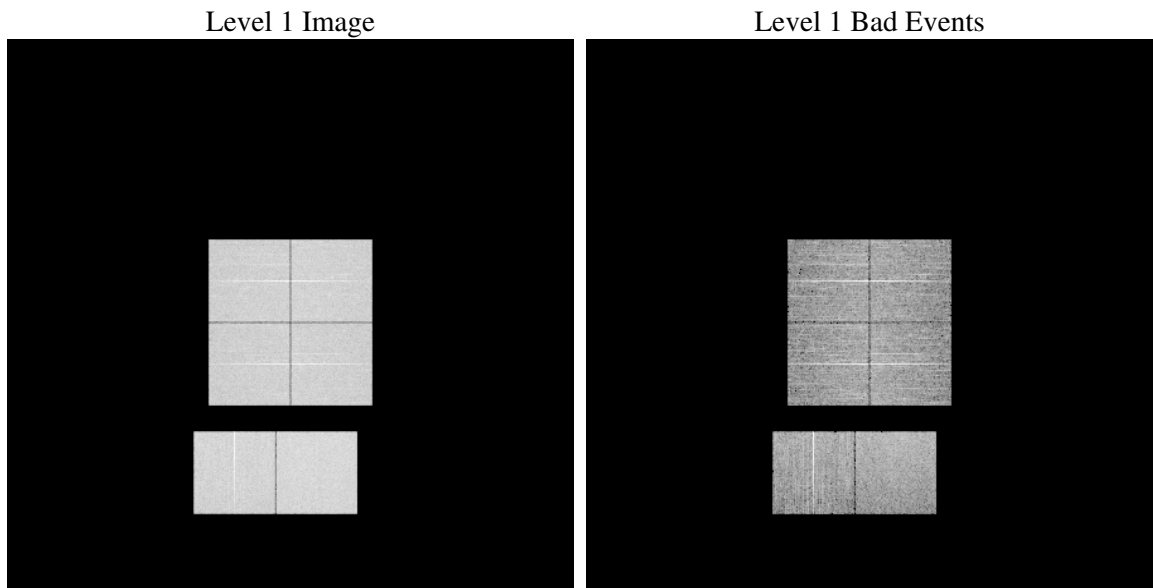
1 Front

seq_num	
obs_id	59670
title	ACIS-012367 diagnostics
observer	CHANDRA engineering request/realtime commanding
object	
dtcycle	0
cycle	P
ra_targ	0.0
dec_targ	0.0
ra_nom	254.97375575668
dec_nom	4.0115254461703
roll_nom	123.40103917269
revision	2
ontime	8035.1999700665
livetime	7933.453429829
ontime0	7354.5946270525
ontime1	7698.1382590234
ontime2	7079.1115318537
ontime3	7221.7142458558
ontime6	7743.5118040144
ontime7	8035.1999700665
l2events	1060155

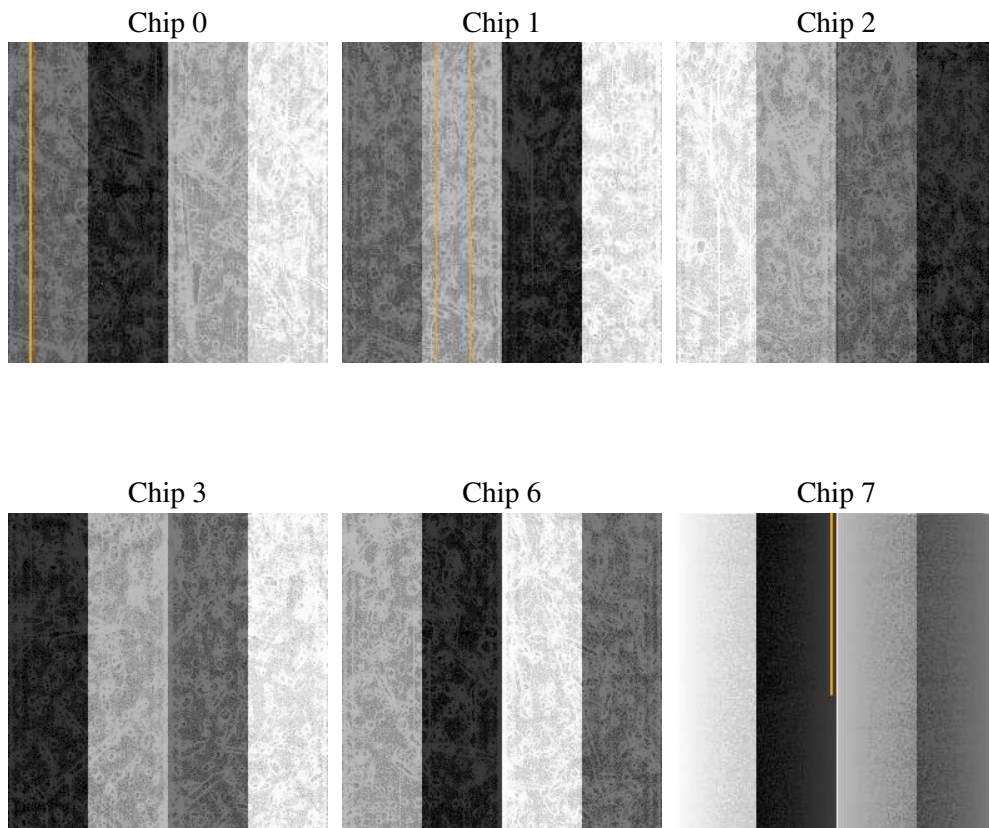
2 OBI

2.1 OBI

2.1.1 Images



2.1.2 Bias



2.1.3 Parameters

obi_num	0
ascdsver	7.6.7
caldsver	3.2.1
date	2006-03-03T14:43:26
revision	2

sched_exp_time	0.0
ontime	8037.7001658082
ontime0	7357.0948227942
ontime1	7700.6384547651
ontime2	7081.6117275953
ontime3	7224.2144415975
ontime6	7746.0119997561
ontime7	8037.7001658082
l1events	1446881

2.1.4 Events

	ccd 0	ccd 1	ccd 2	ccd 3	ccd 6	ccd 7
level 1 events	229625	237328	225637	229959	254194	270138
rejected events	52424	52187	53505	54706	58533	60971
rejected %	22%	21%	23%	23%	23%	22%

	ccd 0	ccd 1	ccd 2	ccd 3	ccd 6	ccd 7
grade 0 events	97513	100885	96257	97874	105621	34354
	42%	42%	42%	42%	41%	12%
grade 1 events	621	528	620	619	529	108
	0%	0%	0%	0%	0%	0%
grade 2 events	30716	33208	29121	29954	33860	63278
	13%	13%	12%	13%	13%	23%
grade 3 events	11735	11829	11342	11420	12296	14494
	5%	4%	5%	4%	4%	5%
grade 4 events	11525	11821	11206	11537	12314	14396
	5%	4%	4%	5%	4%	5%
grade 5 events	3204	3421	2980	3352	3774	6929
	1%	1%	1%	1%	1%	2%
grade 6 events	25783	27476	24300	24552	31659	82729
	11%	11%	10%	10%	12%	30%
grade 7 events	48528	48160	49811	50651	54141	53850
	21%	20%	22%	22%	21%	19%

2.2 Compared Parameters

Parameter	Planned	Actual	Parameter	Planned	Actual
Instrument	ACIS	ACIS	Obspar format version number	6	6
Detector	ACIS-012367	ACIS-012367	Obspar file type	PREDICTED	ACTUAL
Grating	NONE	NONE	Obspar update status	NONE	UPDATED
Data mode	FAINT	FAINT	On-chip summing requested	N	N
Observation mode	SECONDARY	SECONDARY	Subarray requested	NONE	NONE
Pointing RA	0	254.9737557566772	Alternating exposures requested	N	N
Pointing Dec	0	4.011525446170308	Primary exposure time	3.2	3.2
Pointing Roll	0.0	123.4010391726912			
SIM focus pos (mm)	-0.782348	-0.7809083437167272			
SIM defocus (mm)	0	0.7524282956875696			
SIM translation stage pos (mm)	-233.592463	250.466033080201			
SIM translation stage offset (mm)	0	-0.01005468664627074			
Observation start time	231688747.374625	231688746.34964			
Observation start date	2005-05-05T13:59:07	2005-05-05T13:59:06			
Observation end time	231713761.475764	231713760.45078			
Observation end date	2005-05-05T20:56:01	2005-05-05T20:56:00			
Read mode	TIMED	TIMED			

2.3 Aspect

2.4 Star Slots

2.5 FID Slots

A Summary

A.1 Status

V&V Scientist	Beth Sundheim
V&V Date (YYYY-MM-DD)	2006.03.03
V&V Edition	1
V&V Disposition and Status	OK
V&V Charge Time	8.03519997

A.2 Comments