

# V&V Reference Report

## L2 ASCDS Version : 8.5.1.1

Observation 59520 - L2 Version 3  
Chandra X-Ray Center

L2 Processing Date : Dec 27 2012

## Contents

<b>1</b>	<b>Front</b>	<b>2</b>
<b>2</b>	<b>OBI</b>	<b>3</b>
2.1	OBI . . . . .	3
2.1.1	Images . . . . .	3
2.1.2	Bias . . . . .	3
2.1.3	Parameters . . . . .	4
2.1.4	Events . . . . .	4
2.2	Compared Parameters . . . . .	5
2.3	Star Slots . . . . .	6
2.4	FID Slots . . . . .	6
<b>A</b>	<b>Summary</b>	<b>7</b>
A.1	Status . . . . .	7
A.2	Comments . . . . .	7

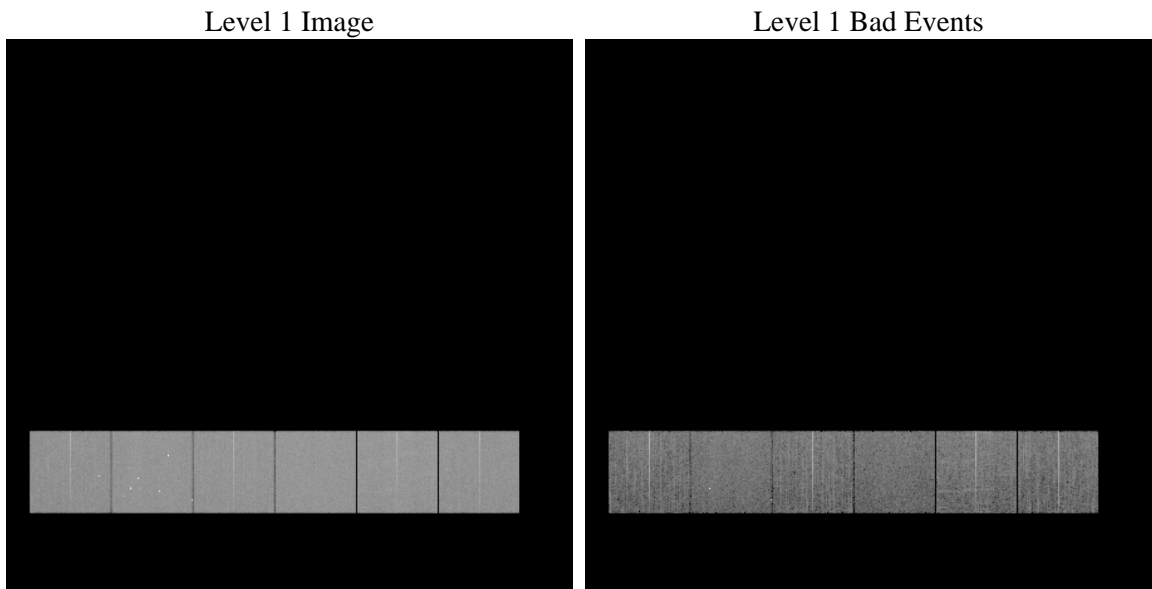
# 1 Front

seq_num	&#160	Sequence number
obs_id	59520	Observation id
title	ACIS-456789 diagnostics	Proposal title
observer	CHANDRA engineering request/realtime commanding	Principal investig
object	&#160	Source name
dtcycle	0	&#160
cycle	P	events from which exps? Prim/Second/Both
ra_targ	0.0	Observer's specified target RA [deg]
dec_targ	0.0	Observer's specified target Dec [deg]
ra_nom	300.18597513274	Nominal RA [deg]
dec_nom	7.4749812798884	Nominal Dec [deg]
roll_nom	208.06548539678	Nominal Roll [deg]
revision	3	Processing version of data
ontime	8258.4828183651	Sum of GTIs [s]
livetime	8153.9089362576	Livetime [s]
ontime4	7395.9877792001	Sum of GTIs [s]
ontime5	8258.4417783618	Sum of GTIs [s]
ontime6	7911.6160366237	Sum of GTIs [s]
ontime7	8258.4828183651	Sum of GTIs [s]
ontime8	8180.535081774	Sum of GTIs [s]
ontime9	7775.6183727086	Sum of GTIs [s]
l2events	1061015	Number of level 2 events

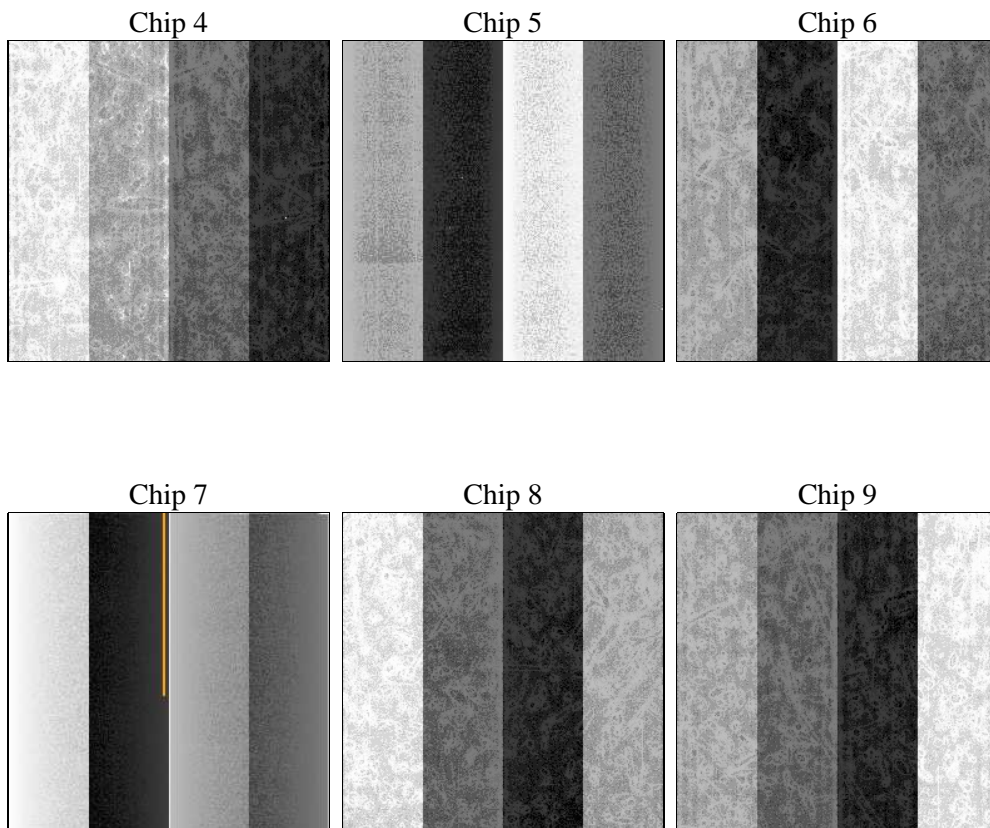
## 2 OBI

### 2.1 OBI

#### 2.1.1 Images



#### 2.1.2 Bias



### 2.1.3 Parameters

obi_num	1	Obi number	sched_exp_time	0.0	[s] Scheduled observation exposure time
ascdsver	8.5.1.1	Processing system revision	ontime	8258.4828183651	Sum of GTIs [s]
caldsver	4.5.5	&#160	ontime4	7395.9877792001	Sum of GTIs [s]
date	2012-12-27T04:34:47	Date and time of file creation	ontime5	8258.4417783618	Sum of GTIs [s]
revision	3	Processing version of data	ontime6	7911.6160366237	Sum of GTIs [s]
			ontime7	8258.4828183651	Sum of GTIs [s]
			ontime8	8180.535081774	Sum of GTIs [s]
			ontime9	7775.6183727086	Sum of GTIs [s]
			l1events	1484790	Number of level 1 events

### 2.1.4 Events

	ccd 4	ccd 5	ccd 6	ccd 7	ccd 8	ccd 9		ccd 4	ccd 5	ccd 6	ccd 7	ccd 8	ccd 9
level 1 events	221523	257183	246568	259130	264982	235404	grade 0 events	97096	42735	102784	49574	108845	98429
rejected events	56753	59578	58074	49665	63363	56972		43%	16%	41%	19%	41%	41%
rejected %	25%	23%	23%	19%	23%	24%	grade 1 events	706	253	507	198	586	540
								0%	0%	0%	0%	0%	0%
							grade 2 events	25505	72439	32474	46260	35547	30508
								11%	28%	13%	17%	13%	12%
							grade 3 events	11062	10285	11910	20585	13448	11486
								4%	3%	4%	7%	5%	4%
							grade 4 events	10709	9991	11846	20393	13429	11541
								4%	3%	4%	7%	5%	4%
							grade 5 events	3185	9810	3607	8604	4463	3751
								1%	3%	1%	3%	1%	1%
							grade 6 events	20871	62698	29974	73240	30837	26809
								9%	24%	12%	28%	11%	11%
							grade 7 events	52389	48972	53466	40276	57827	52340
								23%	19%	21%	15%	21%	22%

## 2.2 Compared Parameters

Parameter	Planned	Actual	Parameter	Planned	Actual
Instrument	ACIS	ACIS	Obspar format version number	7	7
Detector	ACIS-456789	ACIS-456789	Obspar file type	PREDICTED	ACTUAL
Grating	NONE	NONE	Obspar update status	NONE	UPDATED
Data mode	FAINT	FAINT	On-chip summing requested	N	N
Observation mode	SECONDARY	SECONDARY	Subarray requested	NONE	NONE
[deg] Pointing RA	0	300.1859751327369	Alternating exposures requested	N	N
[deg] Pointing Dec	0	7.474981279888428	[s] Primary exposure time	3.2	3.2
[deg] Pointing Roll	0.0	208.0654853967835			
[mm] SIM focus pos	-0.684267	-0.7809083437167272			
[mm] SIM defocus	0	0.7524282956875696			
[mm] SIM translation stage pos	-190.132523	250.4635187648994			
[mm] SIM translation stage offset	0	-0.007540371344731511			
[s] Observation start time (MET)	239457399.029409	239457398.00442			
Observation start date	2005-08-03T11:56:39	2005-08-03T11:56:38			
[s] Observation end time (MET)	239480904.330485	239480903.30549			
Observation end date	2005-08-03T18:28:24	2005-08-03T18:28:23			
Read mode	TIMED	TIMED			

## 2.3 Star Slots

## 2.4 FID Slots

## A Summary

### A.1 Status

V&V Scientist	Beth Sundheim
V&V Date (YYYY-MM-DD)	2013.01.23
V&V Edition	1
V&V Disposition and Status	OK
V&V Charge Time	8.2584828183651

### A.2 Comments