

V&V Reference Report

L2 ASCDS Version : 7.6.7.1

Observation 5890 - L2 Version 002
Chandra X-Ray Center

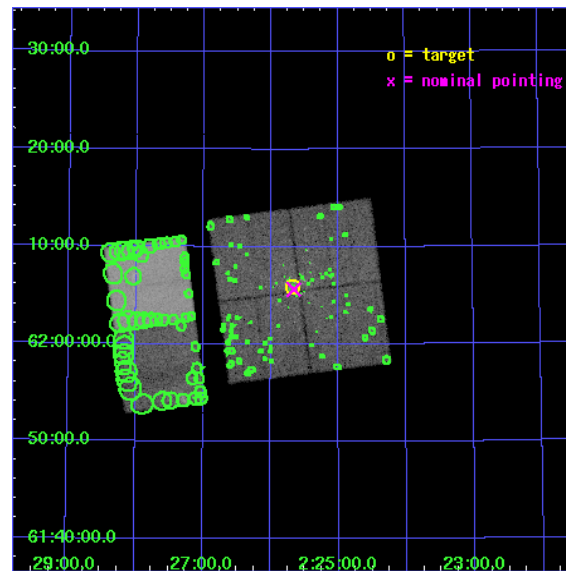
L2 Processing Date : Mar 16 2006

Contents

1	Front	2
2	OBI	3
2.1	OBI	3
2.1.1	Images	3
2.1.2	Bias	3
2.1.3	Parameters	4
2.1.4	Events	4
2.2	Compared Parameters	5
2.3	Aspect	6
2.4	Star Slots	9
2.4.1	Slot 3	9
2.4.2	Slot 4	10
2.4.3	Slot 5	11
2.4.4	Slot 6	12
2.4.5	Slot 7	13
2.5	FID Slots	14
2.5.1	Slot 0	14
2.5.2	Slot 1	15
2.5.3	Slot 2	16
3	Point Sources	17
A	Summary	18
A.1	Status	18
A.2	Comments	18

1 Front

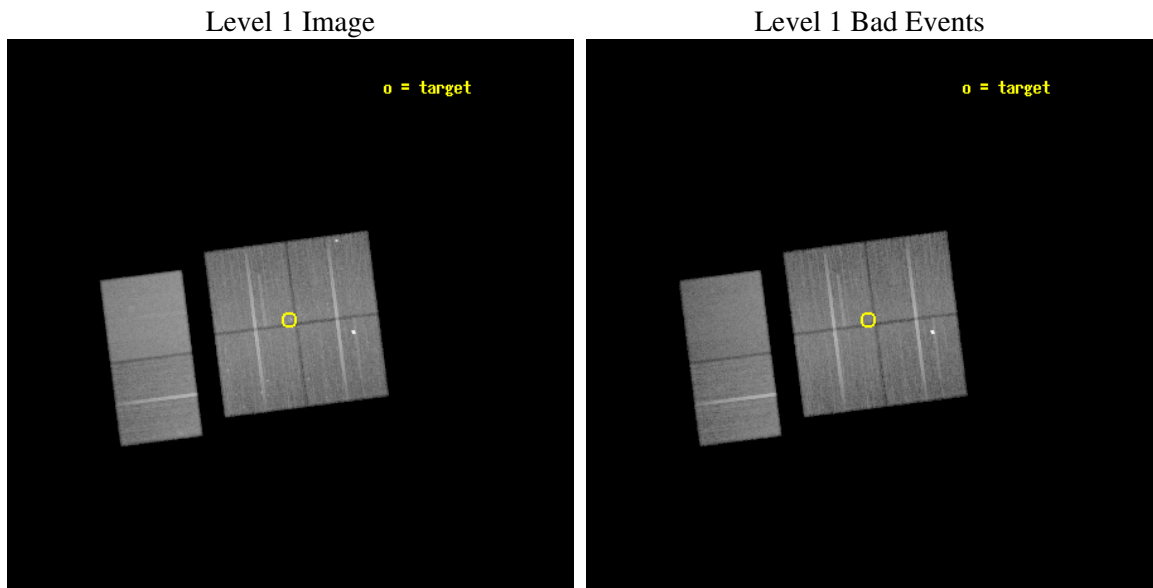
seq_num	900390
obs_id	5890
title	Massive Star Life, Death, and Rebirth in the Perseus Arm
observer	Dr. Leisa Townsley
object	W3 Main IRS5
dtcycle	0
cycle	P
ra_targ	36.419167
dec_targ	62.097889
ra_nom	36.414196941541
dec_nom	62.093886105183
roll_nom	262.67615924863
revision	2
ontime	40140.717879862
livetime	39632.431940228
ontime0	40147.19985044
ontime1	40140.717840016
ontime2	40147.19985044
ontime3	40140.717879862
ontime6	40147.19985044
ontime7	40147.19985044
l2events	299120



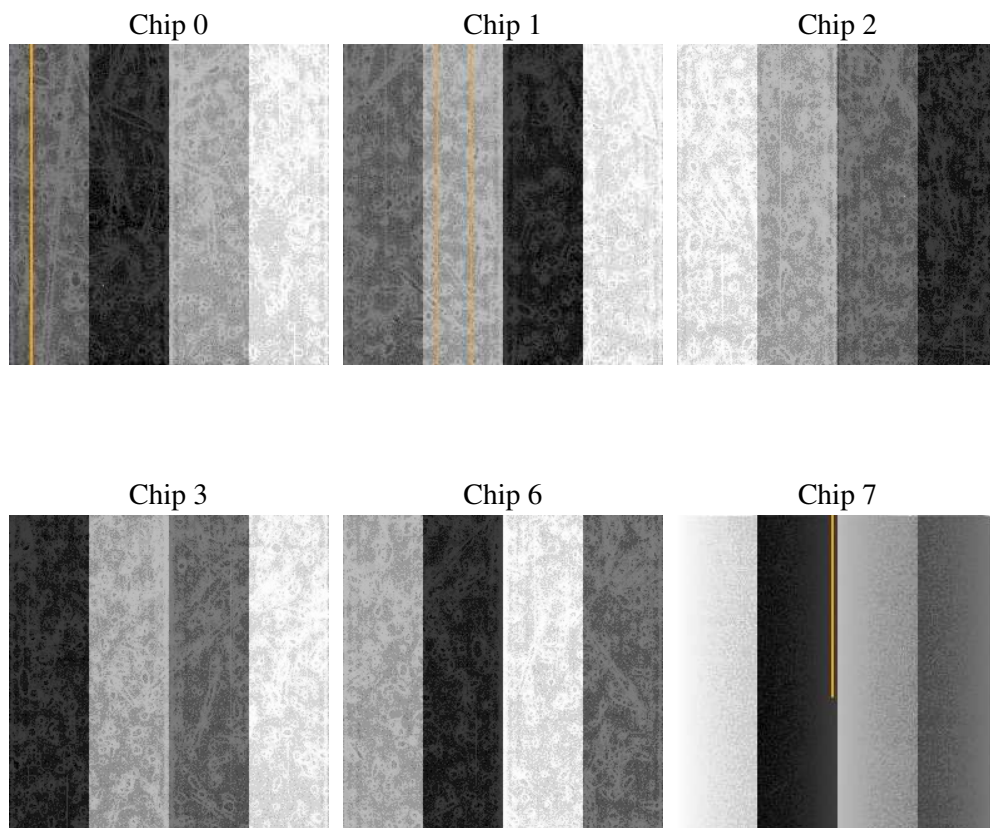
2 OBI

2.1 OBI

2.1.1 Images



2.1.2 Bias



2.1.3 Parameters

obi_num	0
ascdsver	7.6.7.1
caldsver	3.2.1
date	2006-03-16T18:06:38
revision	2

sched_exp_time	40000.000000
ontime	40321.401127189
ontime0	40327.883097768
ontime1	40321.401087344
ontime2	40327.883097768
ontime3	40321.401127189
ontime6	40327.883097768
ontime7	40327.883097768
l1events	1723531

2.1.4 Events

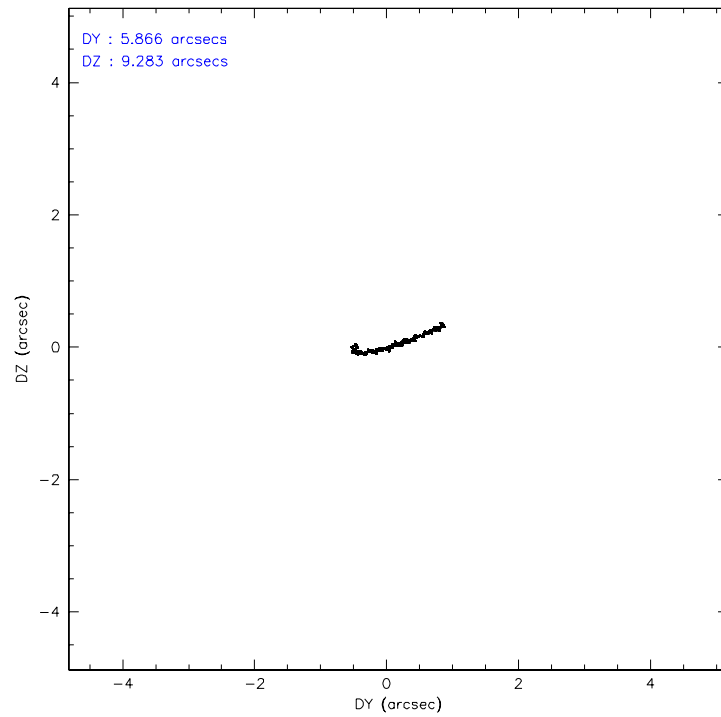
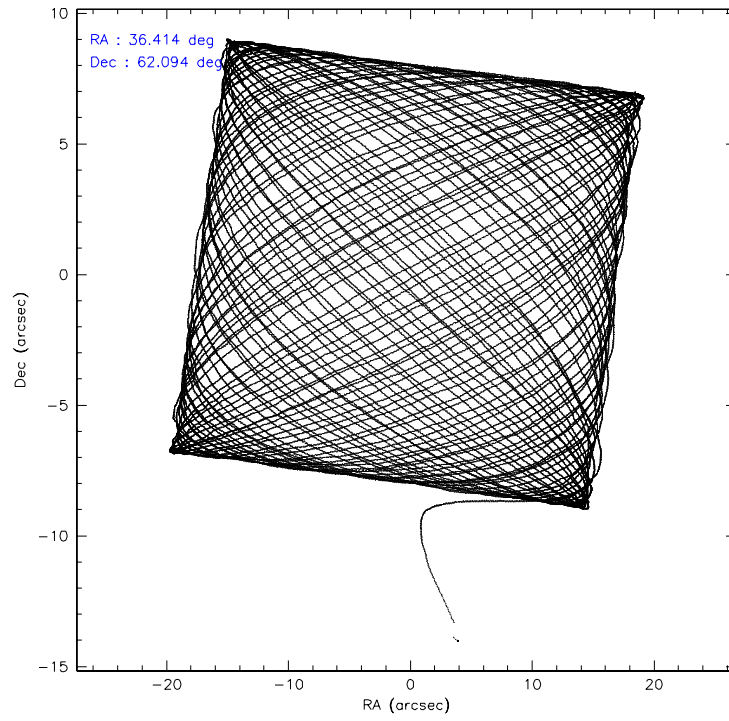
	ccd 0	ccd 1	ccd 2	ccd 3	ccd 6	ccd 7
level 1 events	261518	257029	278751	271608	282640	371985
rejected events	226125	217169	241495	234409	247677	230435
rejected %	86%	84%	86%	86%	87%	61%

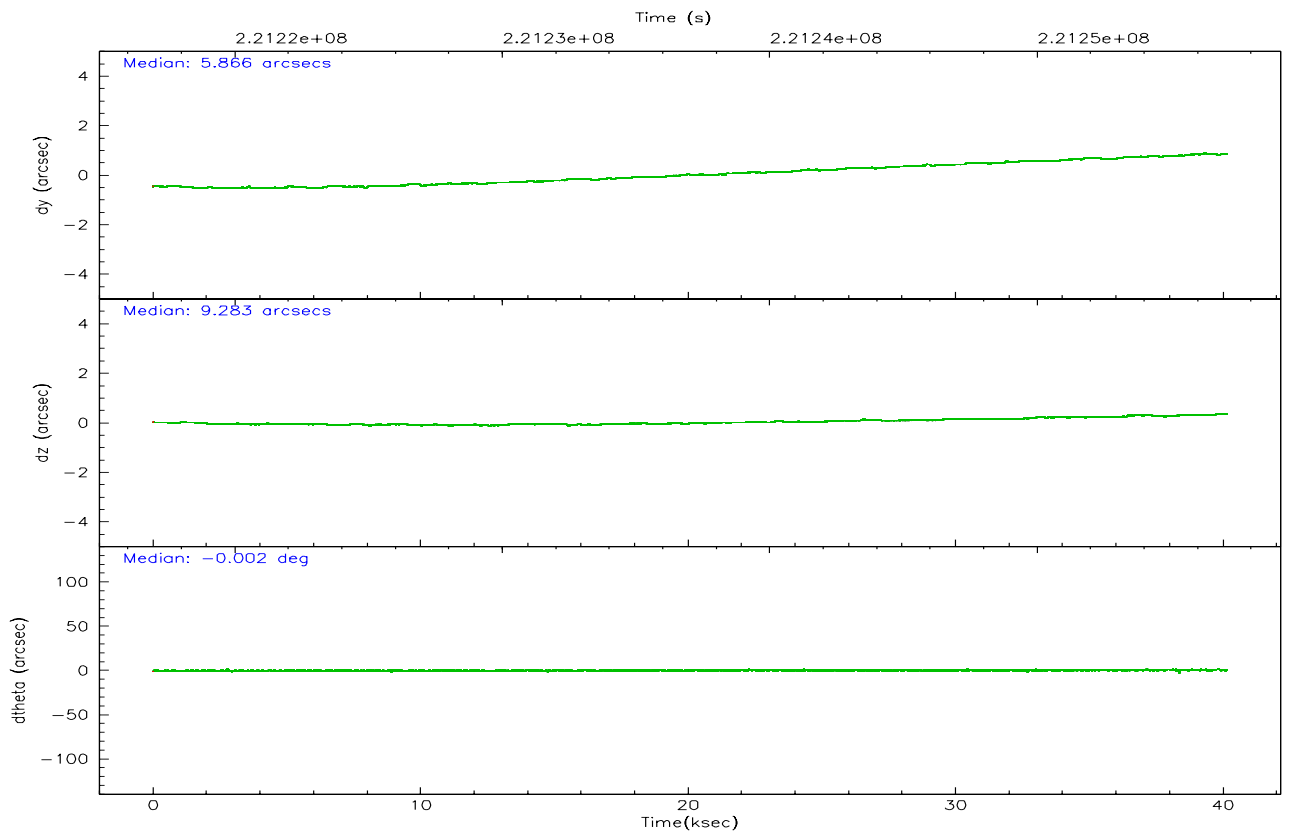
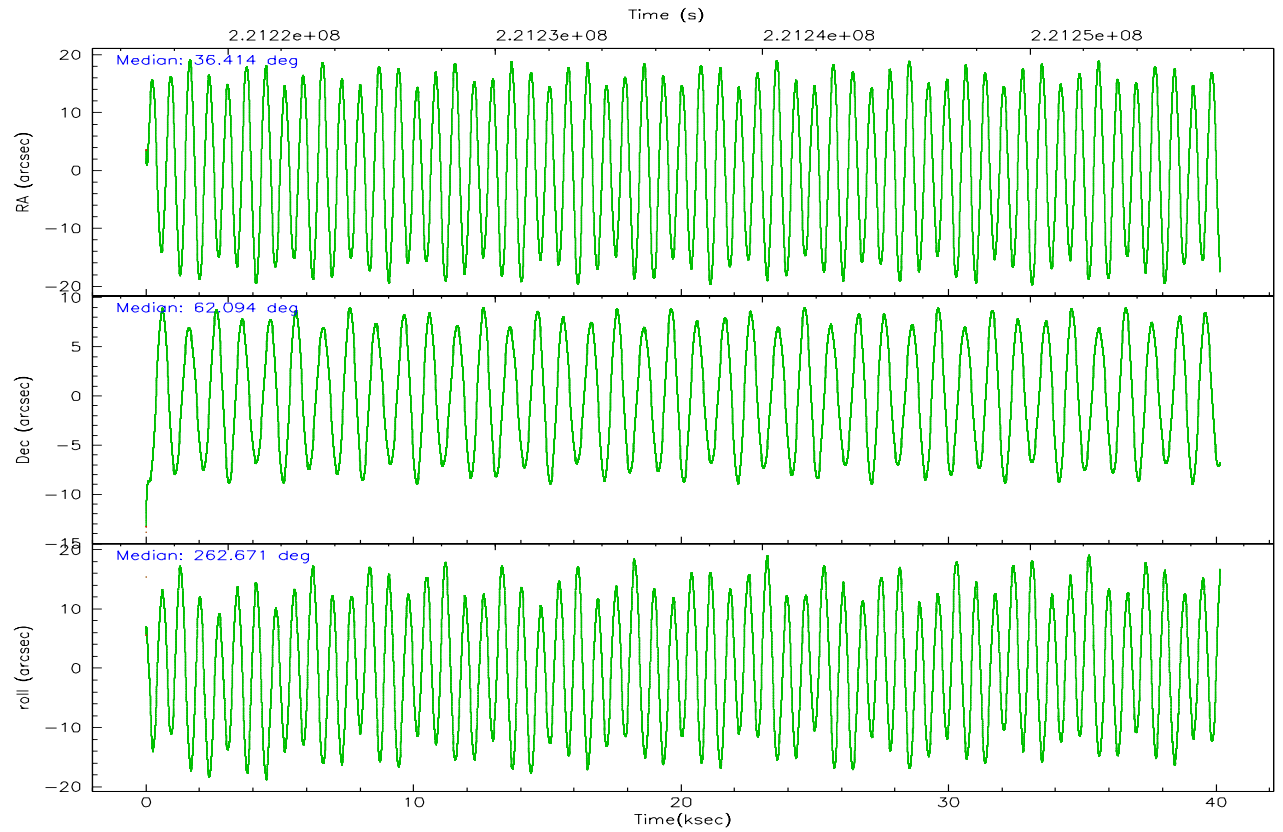
	ccd 0	ccd 1	ccd 2	ccd 3	ccd 6	ccd 7
grade 0 events	15821	17339	18202	17979	14453	7655
	6%	6%	6%	6%	5%	2%
grade 1 events	147	125	167	192	151	226
	0%	0%	0%	0%	0%	0%
grade 2 events	7331	8413	7310	6843	7260	35376
	2%	3%	2%	2%	2%	9%
grade 3 events	3341	3604	3282	3263	3264	7020
	1%	1%	1%	1%	1%	1%
grade 4 events	3125	3594	3175	3405	3309	6700
	1%	1%	1%	1%	1%	1%
grade 5 events	11315	11645	10893	12091	13159	24236
	4%	4%	3%	4%	4%	6%
grade 6 events	5913	7079	5452	5871	6840	85468
	2%	2%	1%	2%	2%	22%
grade 7 events	214525	205230	230270	221964	234204	205304
	82%	79%	82%	81%	82%	55%

2.2 Compared Parameters

Parameter	Planned	Actual	Parameter	Planned	Actual
Instrument	ACIS	ACIS	Obspar format version number	6	6
Detector	ACIS-012367	ACIS-012367	Obspar file type	PREDICTED	ACTUAL
Grating	NONE	NONE	Obspar update status	NONE	UPDATED
Data mode	VFAINT	VFAINT	On-chip summing requested	N	N
Observation mode	POINTING	POINTING	Subarray requested	NONE	NONE
Pointing RA	36.391374	36.414196941541	Alternating exposures requested	N	N
Pointing Dec	62.119109	62.0938861051828	Primary exposure time	0.000000	3.2
Pointing Roll	262.487643	262.6761592486305			
SIM focus pos (mm)	-0.782348	-0.7809083437167272			
SIM defocus (mm)	0	0.001439871863259334			
SIM translation stage pos (mm)	-233.592463	-233.5874344608287			
SIM translation stage offset (mm)	0	-0.005018542100998502			
Observation start time	221217100.184000	221215958.53763			
Observation start date	2005-01-04T09:10:36	2005-01-04T08:52:38			
Observation end time	221257100.184000	221257488.977			
Observation end date	2005-01-04T20:17:16	2005-01-04T20:24:48			
Read mode	TIMED	TIMED			

2.3 Aspect



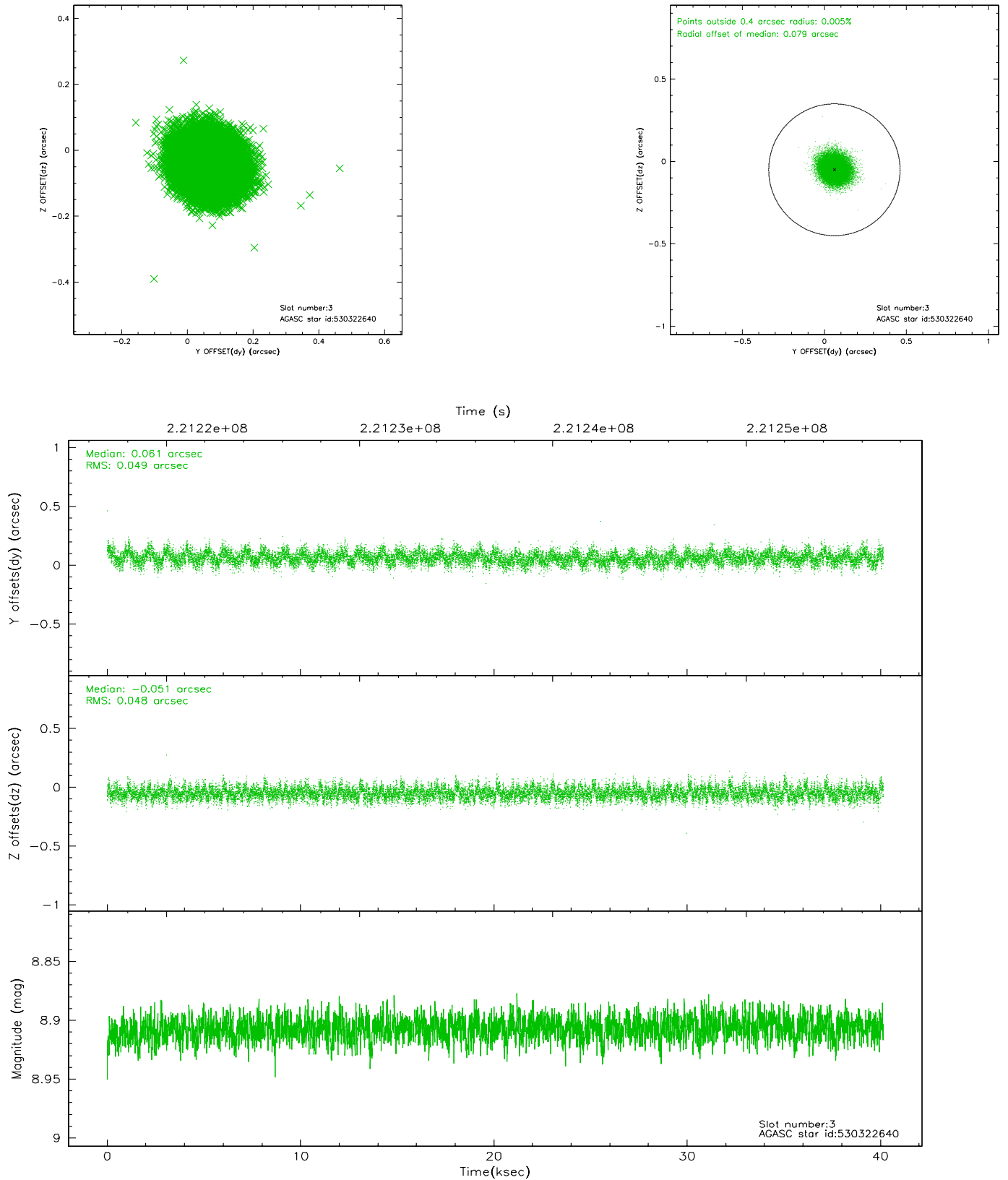


Slot Statistics

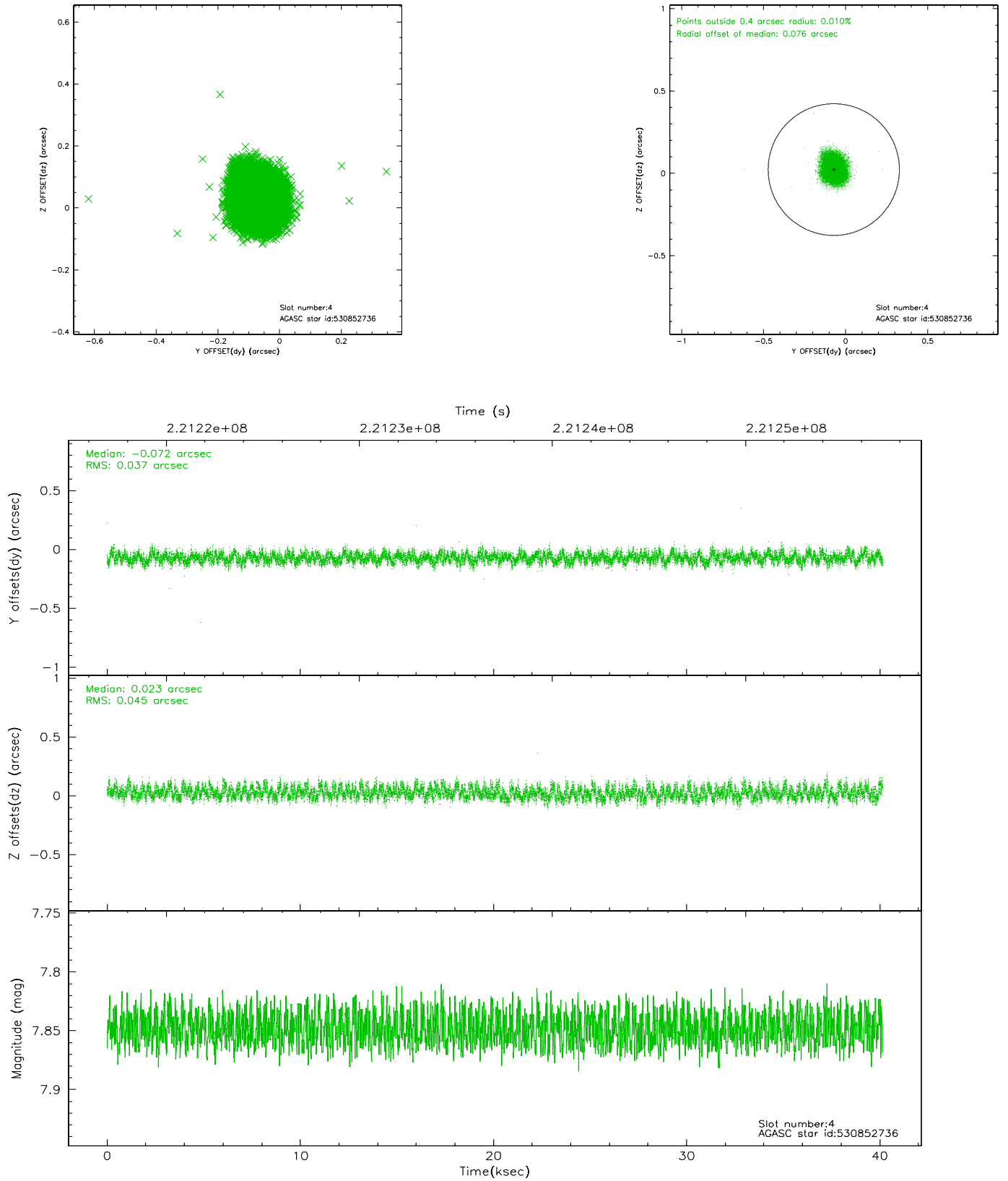
slot	status	id	mag	n_pts	med_dy	med_dz	dr1	dr2	ra	dec	mean_y	mean_z
0	FID	ACIS-I-1	7.24	9794	-0.015	0.060	0.013	0.019	0.000000	0.000000	933.78	-832.72
1	FID	ACIS-I-5	7.23	9794	-0.131	0.021	0.016	0.022	0.000000	0.000000	-1814.44	1064.71
2	FID	ACIS-I-6	7.25	9794	0.057	-0.011	0.010	0.015	0.000000	0.000000	399.37	1709.21
3	GUIDE	530322640	8.91	19575	0.061	-0.051	0.073	0.117	35.878914	61.773652	1344.21	-702.59
4	GUIDE	530852736	7.85	19584	-0.072	0.023	0.062	0.099	37.086329	62.219010	-515.35	1109.01
5	GUIDE	530859152	9.68	19576	0.031	0.017	0.133	0.204	35.871812	62.508157	-1278.71	-1039.62
6	GUIDE	530862272	8.84	19578	-0.087	0.081	0.069	0.115	36.216069	62.475924	-1235.85	-457.12
7	GUIDE	530862896	8.92	19576	0.071	-0.078	0.078	0.124	35.753276	62.216485	-212.18	-1108.11

2.4 Star Slots

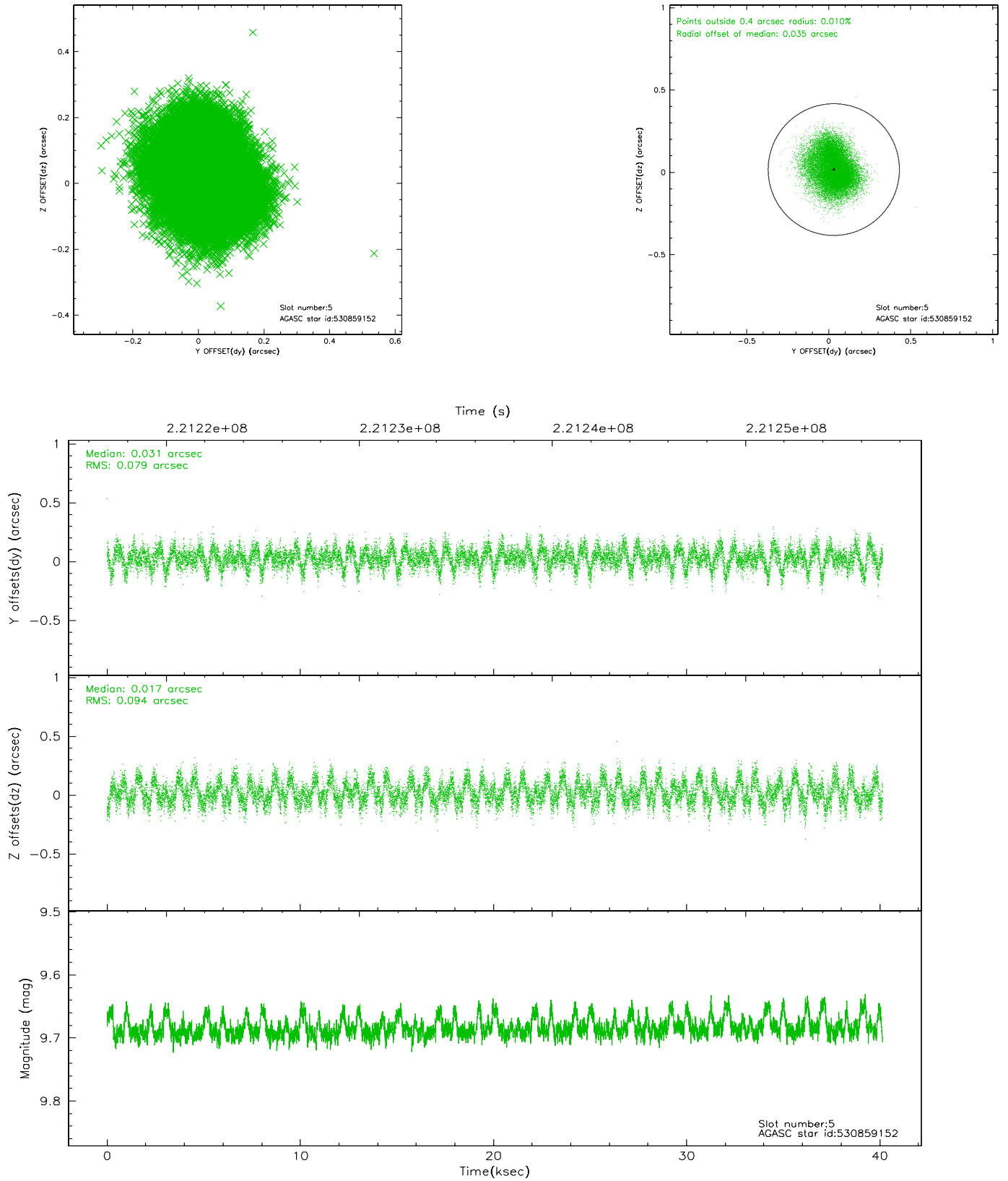
2.4.1 Slot 3



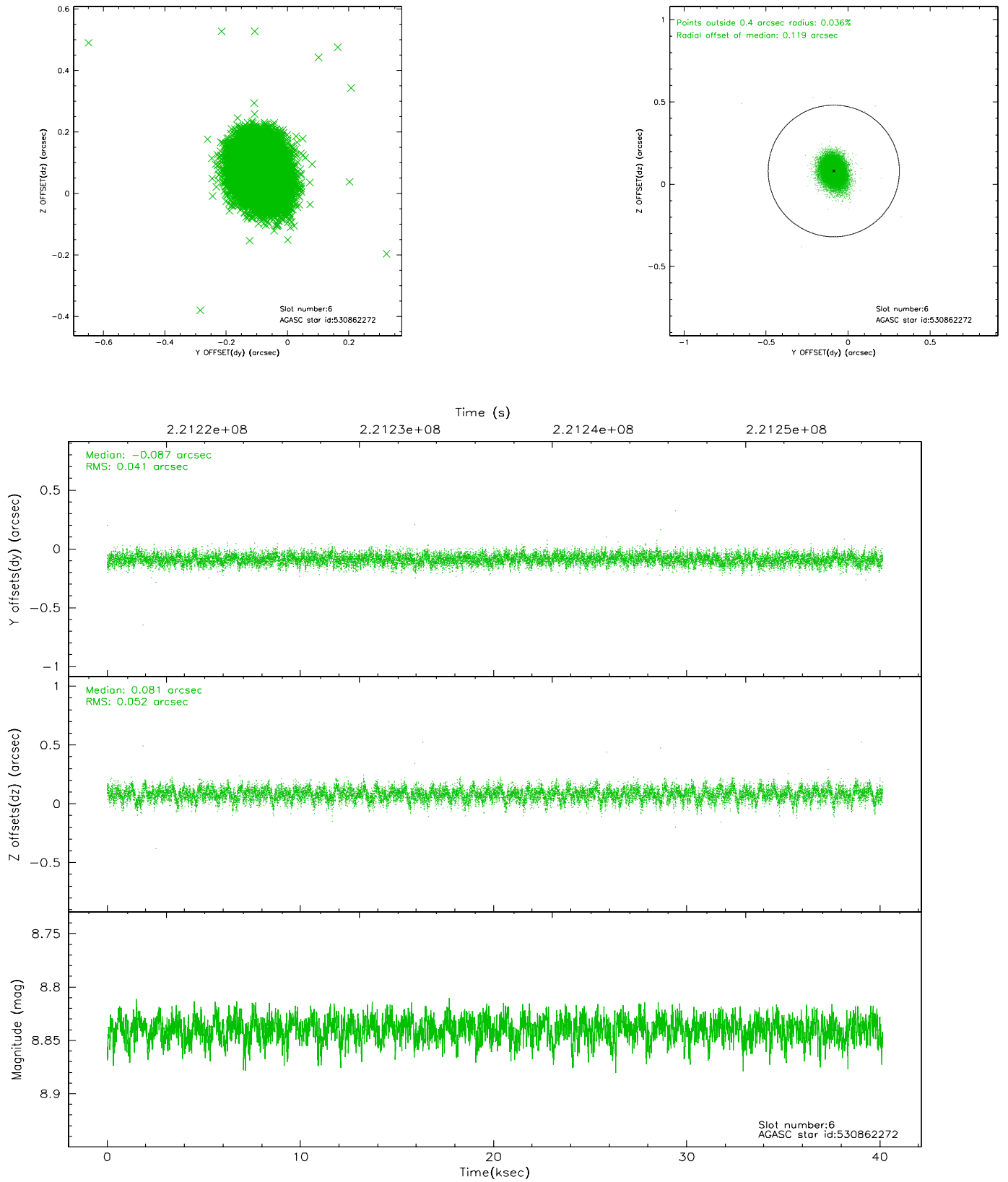
2.4.2 Slot 4



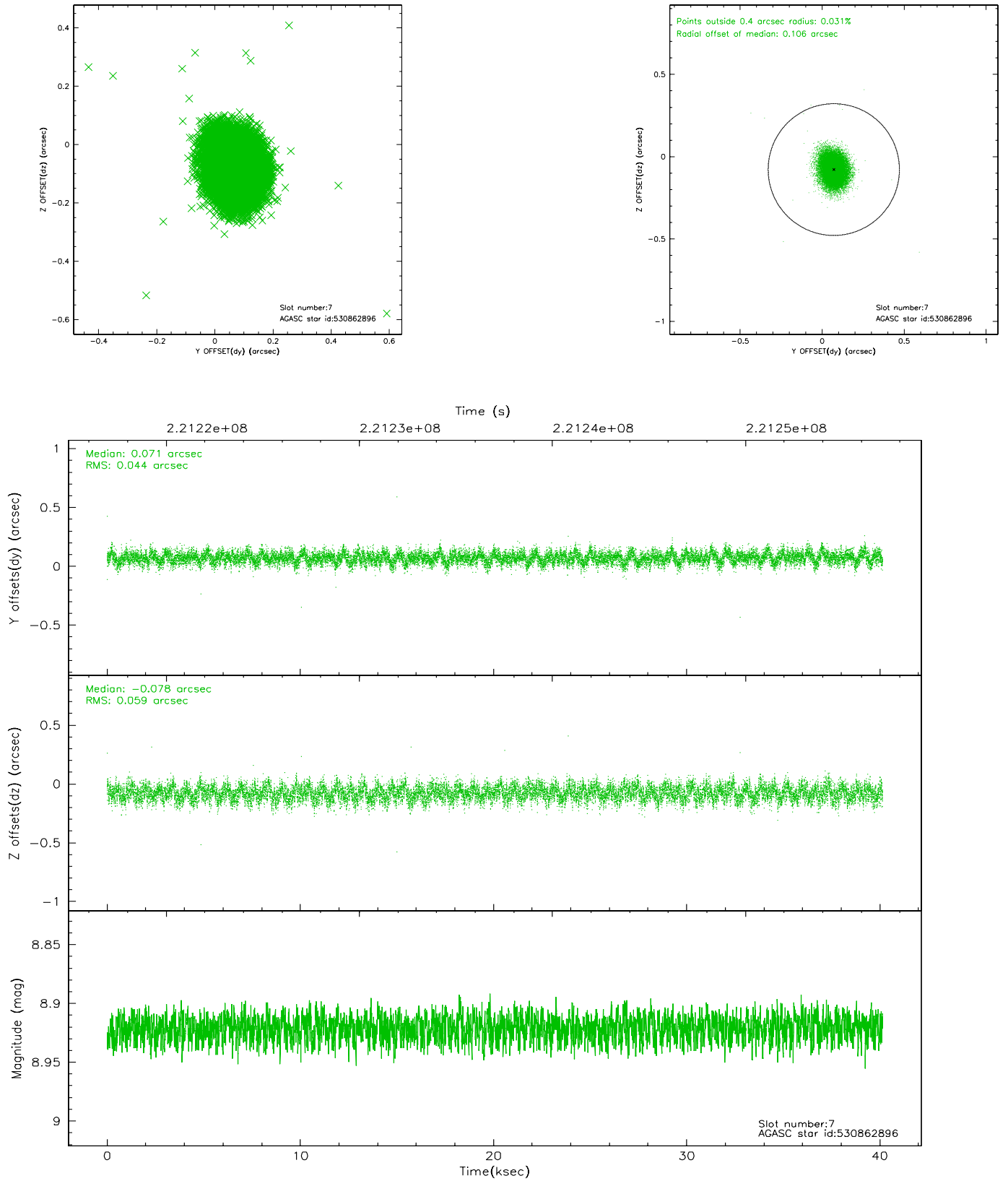
2.4.3 Slot 5



2.4.4 Slot 6

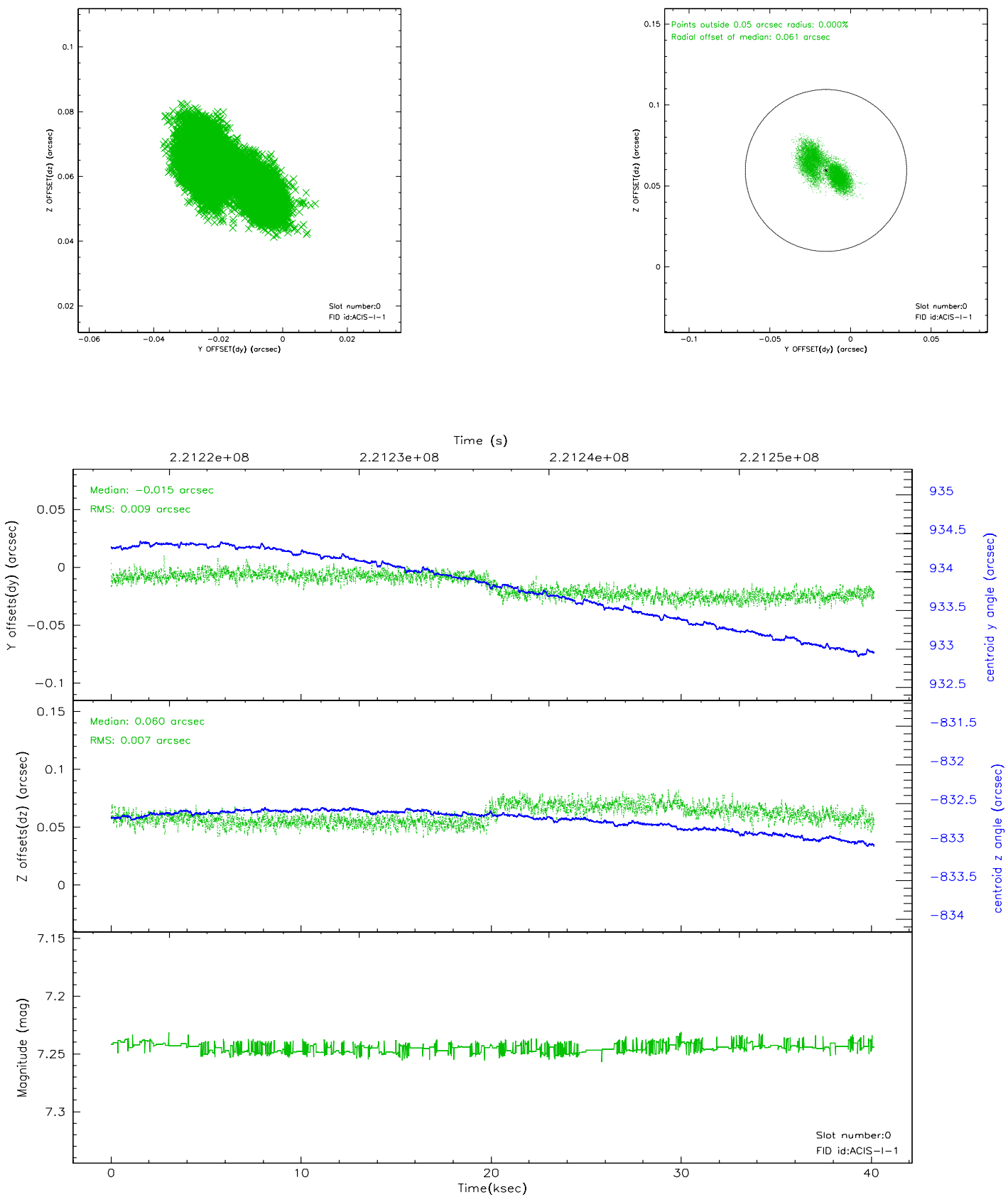


2.4.5 Slot 7

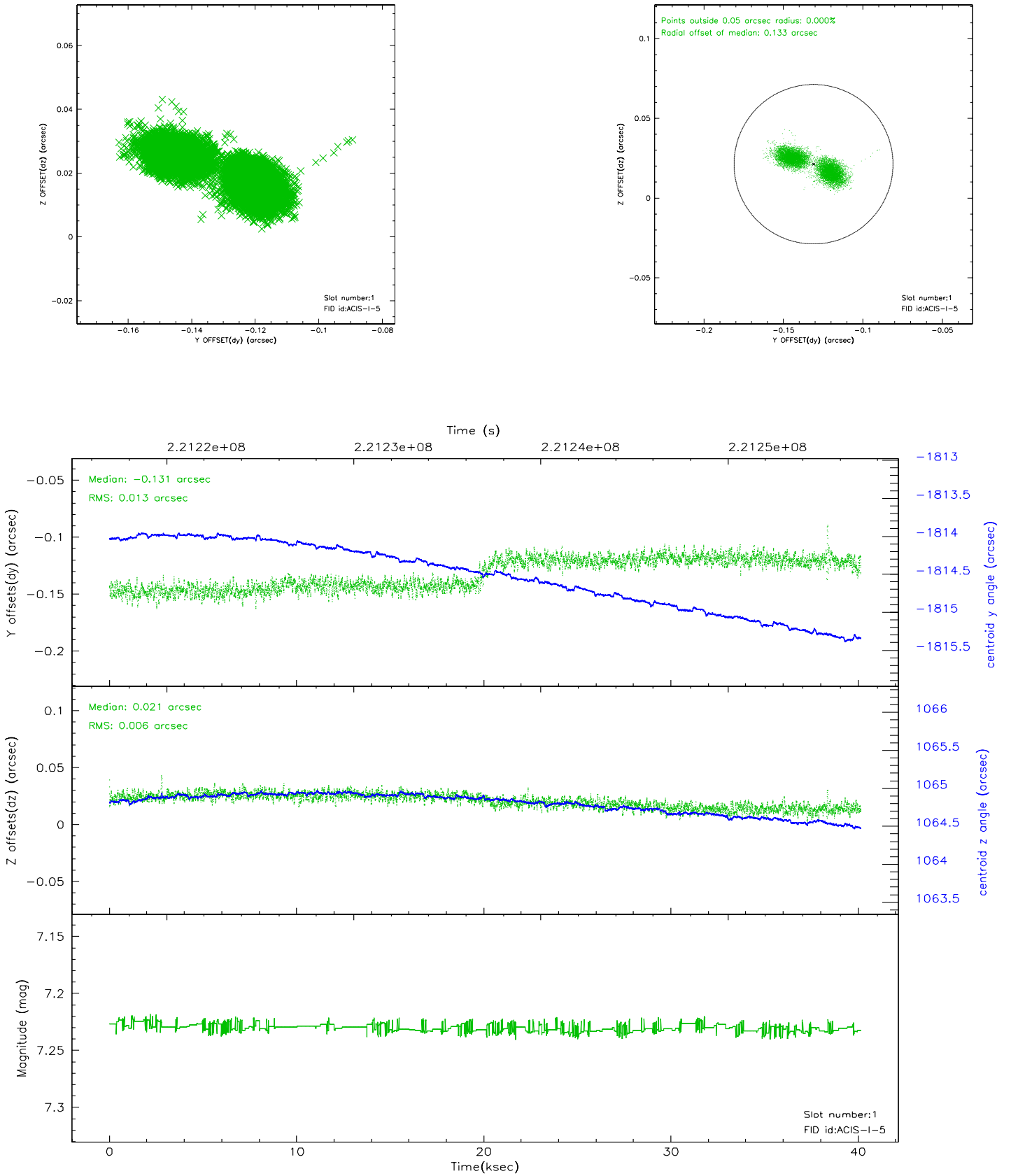


2.5 FID Slots

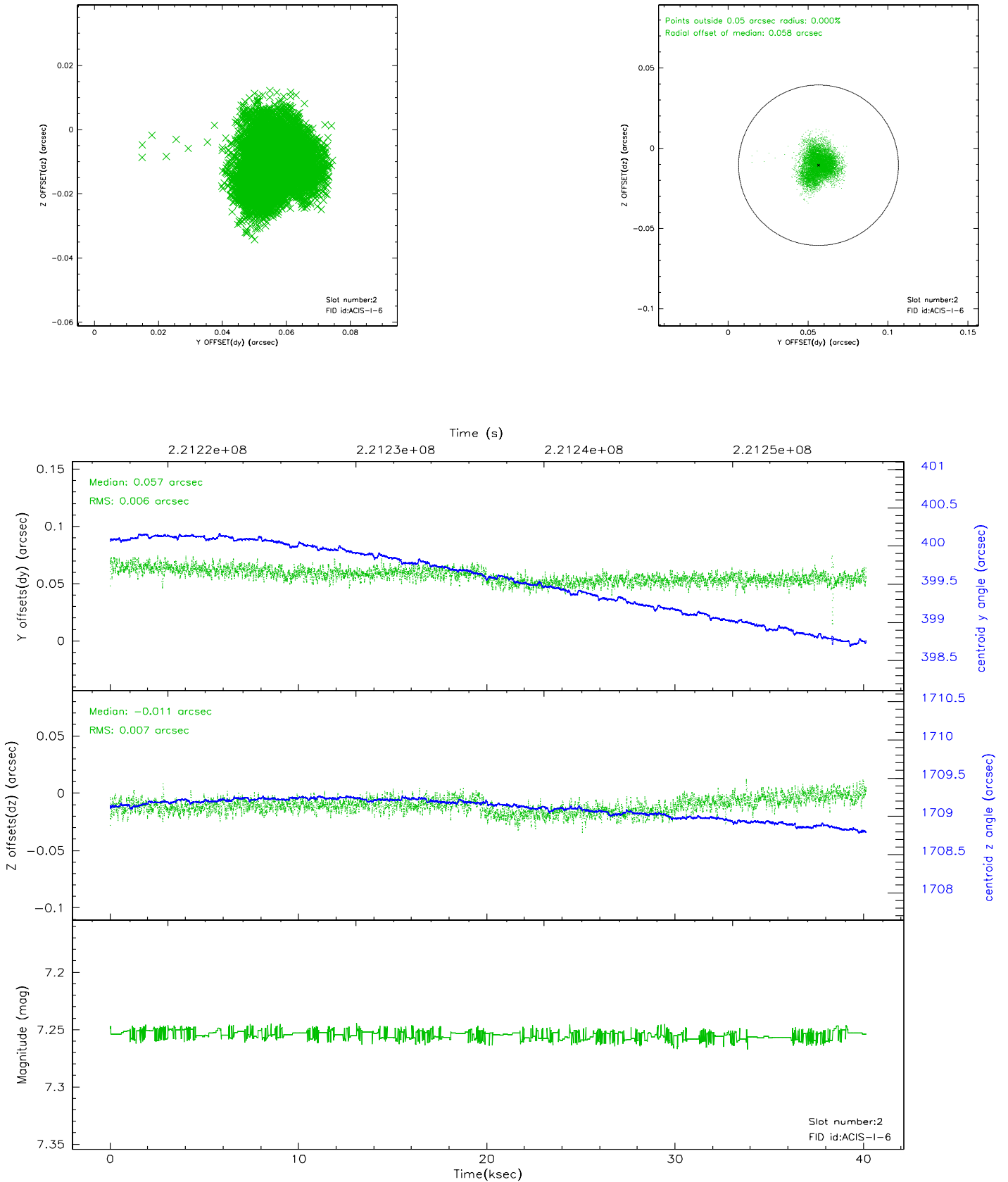
2.5.1 Slot 0



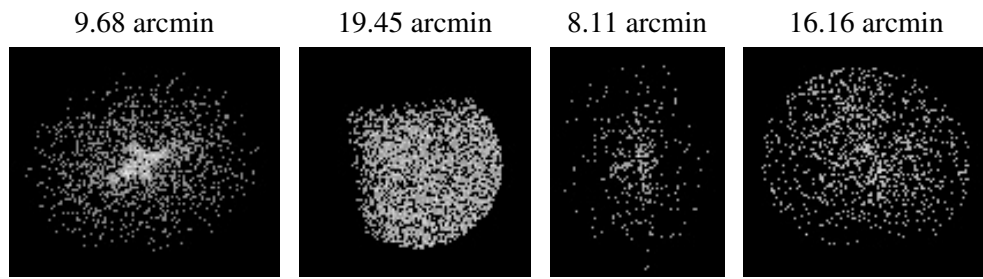
2.5.2 Slot 1



2.5.3 Slot 2



3 Point Sources



A Summary

A.1 Status

V&V Scientist	Jen Lauer
V&V Date (YYYY-MM-DD)	2006.03.16
V&V Edition	1
V&V Disposition and Status	OK
V&V Charge Time	40.14071

A.2 Comments