

V&V Reference Report

L2 ASCDS Version : 8.4.4

Observation 58440 - L2 Version 2
Chandra X-Ray Center

L2 Processing Date : Apr 22 2012

Contents

1	Front	2
2	OBI	3
2.1	OBI	3
2.1.1	Images	3
2.1.2	Bias	3
2.1.3	Parameters	4
2.1.4	Events	4
2.2	Compared Parameters	5
2.3	Star Slots	6
2.4	FID Slots	6
A	Summary	7
A.1	Status	7
A.2	Comments	7

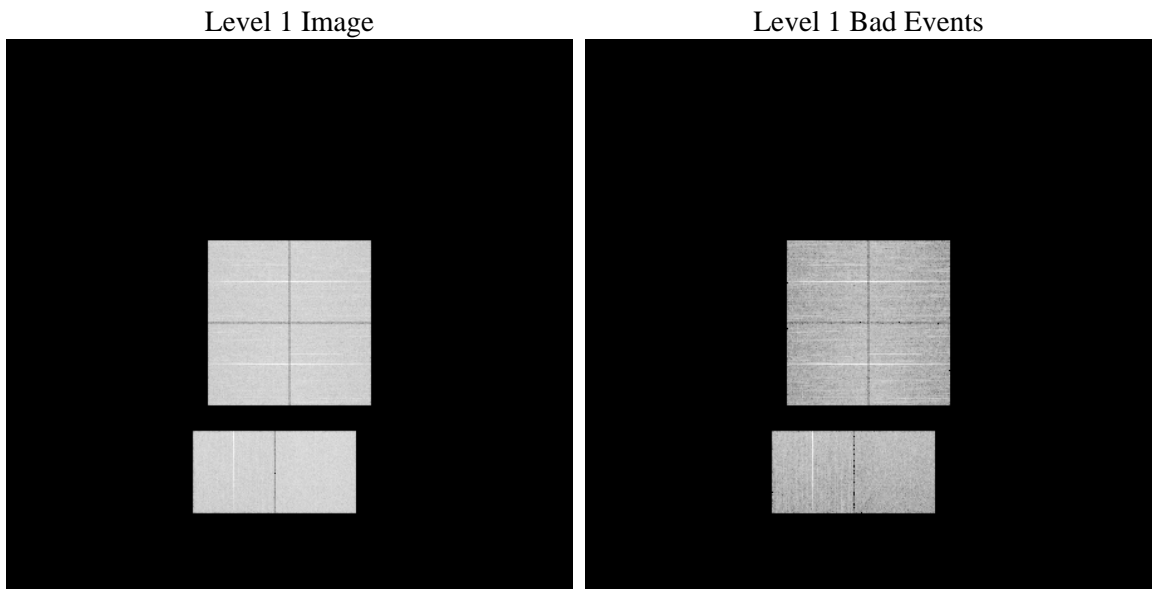
1 Front

seq_num	 	Sequence number
obs_id	58440	Observation id
title	ACIS-012367 diagnostics	Proposal title
observer	CHANDRA engineering request/realtime commanding	Principal investig
object	 	Source name
dtcycle	0	
cycle	P	events from which exps? Prim/Second/Both
ra_targ	0.0	Observer's specified target RA [deg]
dec_targ	0.0	Observer's specified target Dec [deg]
ra_nom	169.41320321594	Nominal RA [deg]
dec_nom	-2.1270347886143	Nominal Dec [deg]
roll_nom	258.43250015756	Nominal Roll [deg]
revision	2	Processing version of data
ontime	8269.7856838107	Sum of GTIs [s]
livetime	8165.0686780152	Livetime [s]
ontime0	8269.826723814	Sum of GTIs [s]
ontime1	8269.8677539229	Sum of GTIs [s]
ontime2	8271.999969244	Sum of GTIs [s]
ontime3	8269.7446438074	Sum of GTIs [s]
ontime6	8271.999969244	Sum of GTIs [s]
ontime7	8269.7856838107	Sum of GTIs [s]
l2events	745741	Number of level 2 events

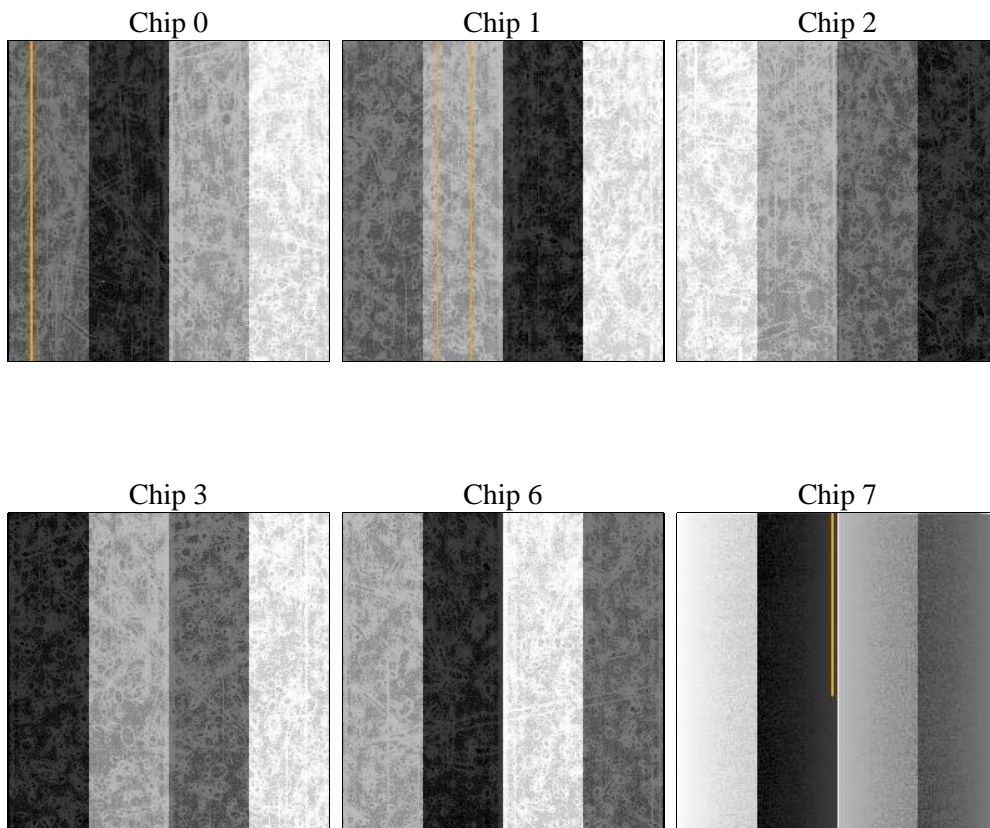
2 OBI

2.1 OBI

2.1.1 Images



2.1.2 Bias



2.1.3 Parameters

obi_num	0	Obi number	sched_exp_time	0.0	[s] Scheduled observation exposure time
ascdsver	8.4.4	Processing system revision	ontime	8269.7856838107	Sum of GTIs [s]
caldsver	4.4.9	 	ontime0	8269.826723814	Sum of GTIs [s]
date	2012-04-22T22:14:07	Date and time of file creation	ontime1	8269.8677539229	Sum of GTIs [s]
revision	2	Processing version of data	ontime2	8271.999969244	Sum of GTIs [s]
			ontime3	8269.7446438074	Sum of GTIs [s]
			ontime6	8271.999969244	Sum of GTIs [s]
			ontime7	8269.7856838107	Sum of GTIs [s]
			l1events	1211723	Number of level 1 events

2.1.4 Events

	ccd 0	ccd 1	ccd 2	ccd 3	ccd 6	ccd 7		ccd 0	ccd 1	ccd 2	ccd 3	ccd 6	ccd 7
level 1 events	193920	193661	197988	199547	204453	222154	grade 0 events	67664	66331	69765	69936	68380	32750
rejected events	69861	68547	73243	74445	75036	64791		34%	34%	35%	35%	33%	14%
rejected %	36%	35%	36%	37%	36%	29%	grade 1 events	464	369	476	503	386	151
								0%	0%	0%	0%	0%	0%
							grade 2 events	21625	23468	20327	20946	23584	34441
								11%	12%	10%	10%	11%	15%
							grade 3 events	8063	7918	8409	8274	8041	14741
								4%	4%	4%	4%	3%	6%
							grade 4 events	8129	7990	8344	8435	7950	14592
								4%	4%	4%	4%	3%	6%
							grade 5 events	3802	3825	3561	4245	4128	10174
								1%	1%	1%	2%	2%	4%
							grade 6 events	18578	19407	17900	17511	21462	60839
								9%	10%	9%	8%	10%	27%
							grade 7 events	65595	64353	69206	69697	70522	54466
								33%	33%	34%	34%	34%	24%

2.2 Compared Parameters

Parameter	Planned	Actual	Parameter	Planned	Actual
Instrument	ACIS	ACIS	Obspar format version number	7	7
Detector	ACIS-012367	ACIS-012367	Obspar file type	PREDICTED	ACTUAL
Grating	NONE	NONE	Obspar update status	NONE	UPDATED
Data mode	FAINT	FAINT	On-chip summing requested	N	N
Observation mode	SECONDARY	SECONDARY	Subarray requested	NONE	NONE
[deg] Pointing RA	0	169.4132032159351	Alternating exposures requested	N	N
[deg] Pointing Dec	0	-2.127034788614321	[s] Primary exposure time	3.2	3.2
[deg] Pointing Roll	0.0	258.4325001575637			
[mm] SIM focus pos	-0.782348	-0.7809083437167272			
[mm] SIM defocus	0	0.7524282956875696			
[mm] SIM translation stage pos	-233.592463	250.466033080201			
[mm] SIM translation stage offset	0	-0.01005468664627074			
[s] Observation start time (MET)	292461900.157208	292461899.13221			
Observation start date	2007-04-08T23:25:00	2007-04-08T23:24:59			
[s] Observation end time (MET)	292485942.558354	292485941.53335			
Observation end date	2007-04-09T06:05:43	2007-04-09T06:05:41			
Read mode	TIMED	TIMED			

2.3 Star Slots

2.4 FID Slots

A Summary

A.1 Status

V&V Scientist	Jen Lauer
V&V Date (YYYY-MM-DD)	2012.04.23
V&V Edition	1
V&V Disposition and Status	OK
V&V Charge Time	8.2697856838107

A.2 Comments