

V&V Reference Report

L2 ASCDS Version : 7.6.7.1

Observation 5810 - L2 Version 002
Chandra X-Ray Center

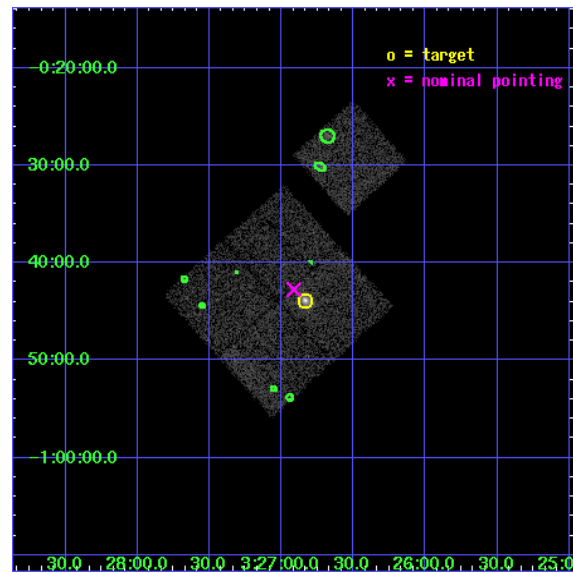
L2 Processing Date : Apr 4 2006

Contents

1	Front	2
2	OBI	3
2.1	OBI	3
2.1.1	Images	3
2.1.2	Bias	3
2.1.3	Parameters	4
2.1.4	Events	4
2.2	Compared Parameters	5
2.3	Aspect	6
2.4	Star Slots	9
2.4.1	Slot 3	9
2.4.2	Slot 4	10
2.4.3	Slot 5	11
2.4.4	Slot 6	12
2.4.5	Slot 7	13
2.5	FID Slots	14
2.5.1	Slot 0	14
2.5.2	Slot 1	15
2.5.3	Slot 2	16
3	Point Sources	17
A	Summary	18
A.1	Status	18
A.2	Comments	18

1 Front

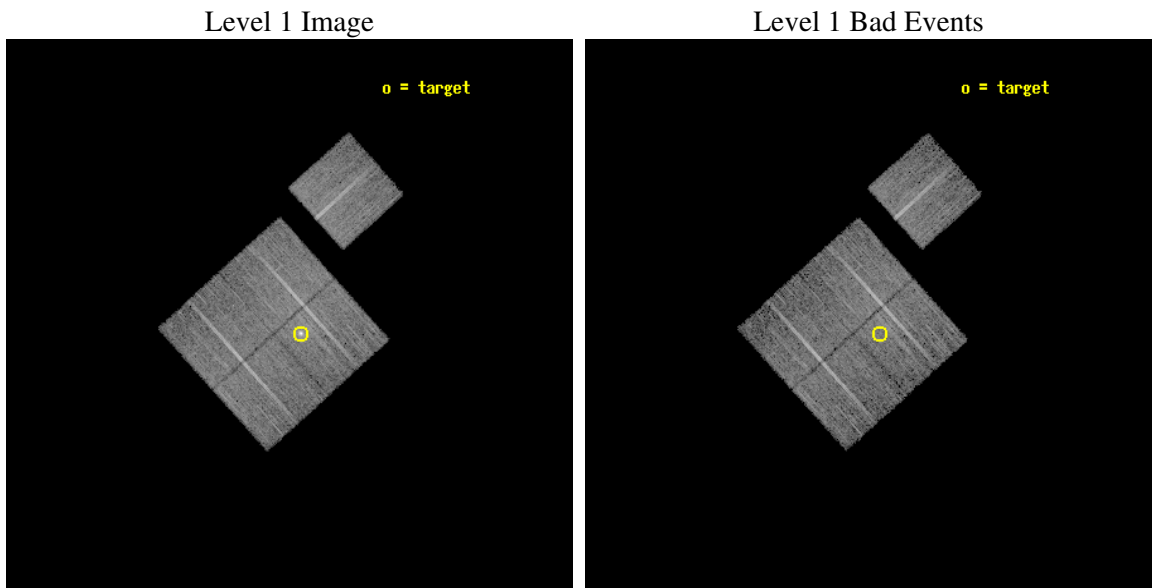
seq_num	800523
obs_id	5810
title	MACS: The most massive galaxy clusters at $z>0.3$
observer	Dr Harald Ebeling
object	MACSJ0326.8-0043
dtcycle	0
cycle	P
ra_targ	51.708458
dec_targ	-0.731361
ra_nom	51.728331824437
dec_nom	-0.71219327376753
roll_nom	47.880110585773
revision	2
ontime	10050.199980676
livetime	9918.8867190791
ontime0	10050.199980676
ontime1	10047.059000432
ontime2	10050.199980676
ontime3	10050.199980676
ontime6	10050.199980676
l2events	31350



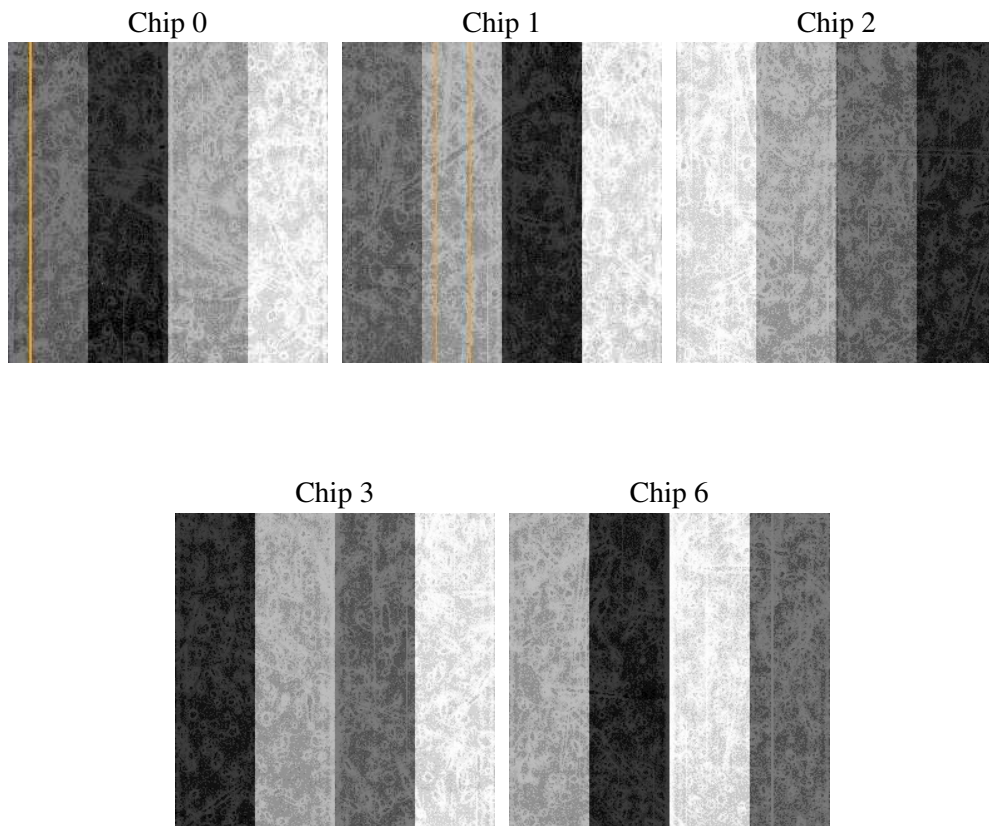
2 OBI

2.1 OBI

2.1.1 Images



2.1.2 Bias



2.1.3 Parameters

obi_num	1
ascdsver	7.6.7.1
caldbver	3.2.1
date	2006-04-04T12:03:19
revision	2

sched_exp_time	10000.000000
ontime	10054.383143932
ontime0	10054.38316384
ontime1	10051.242183596
ontime2	10054.383143932
ontime3	10054.383143932
ontime6	10054.38316384
l1events	331321

2.1.4 Events

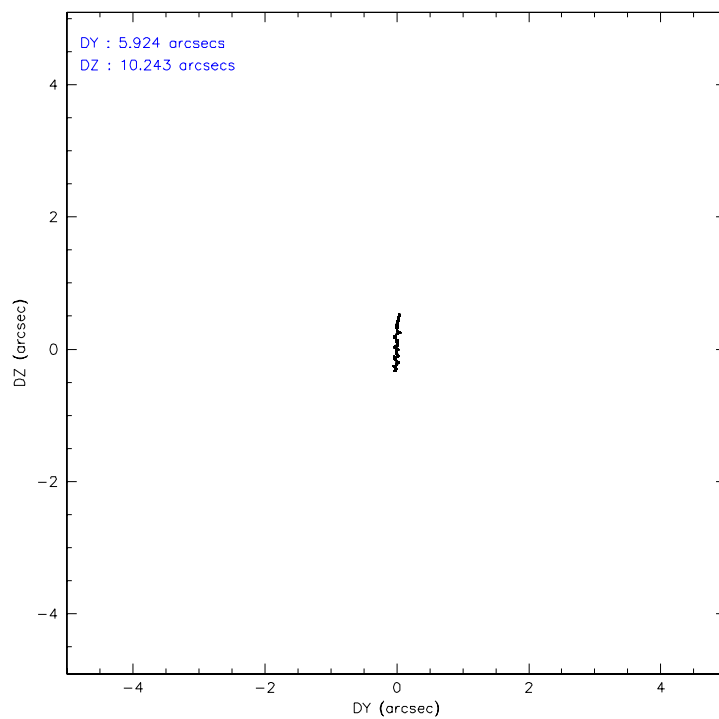
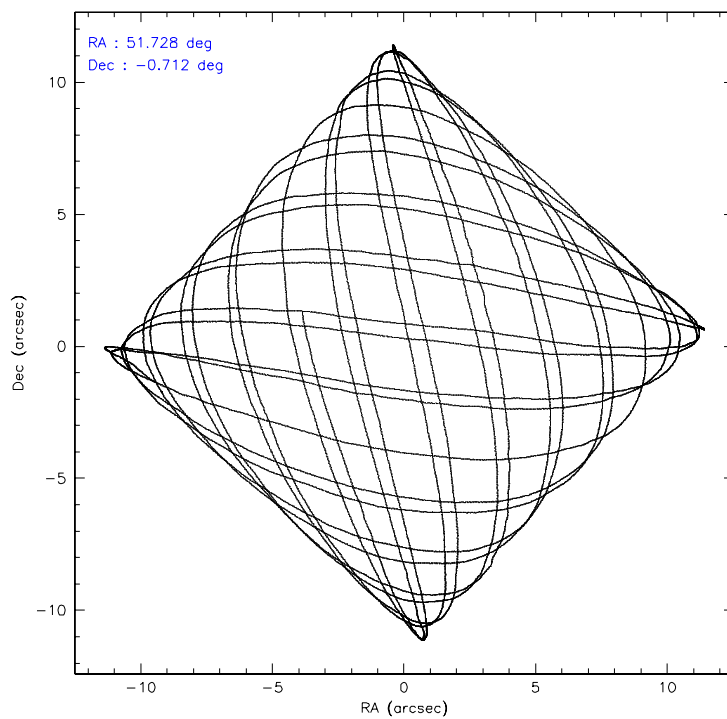
	ccd 0	ccd 1	ccd 2	ccd 3	ccd 6
level 1 events	61657	62688	69462	69580	67934
rejected events	55063	55231	62886	60246	60746
rejected %	89%	88%	90%	86%	89%

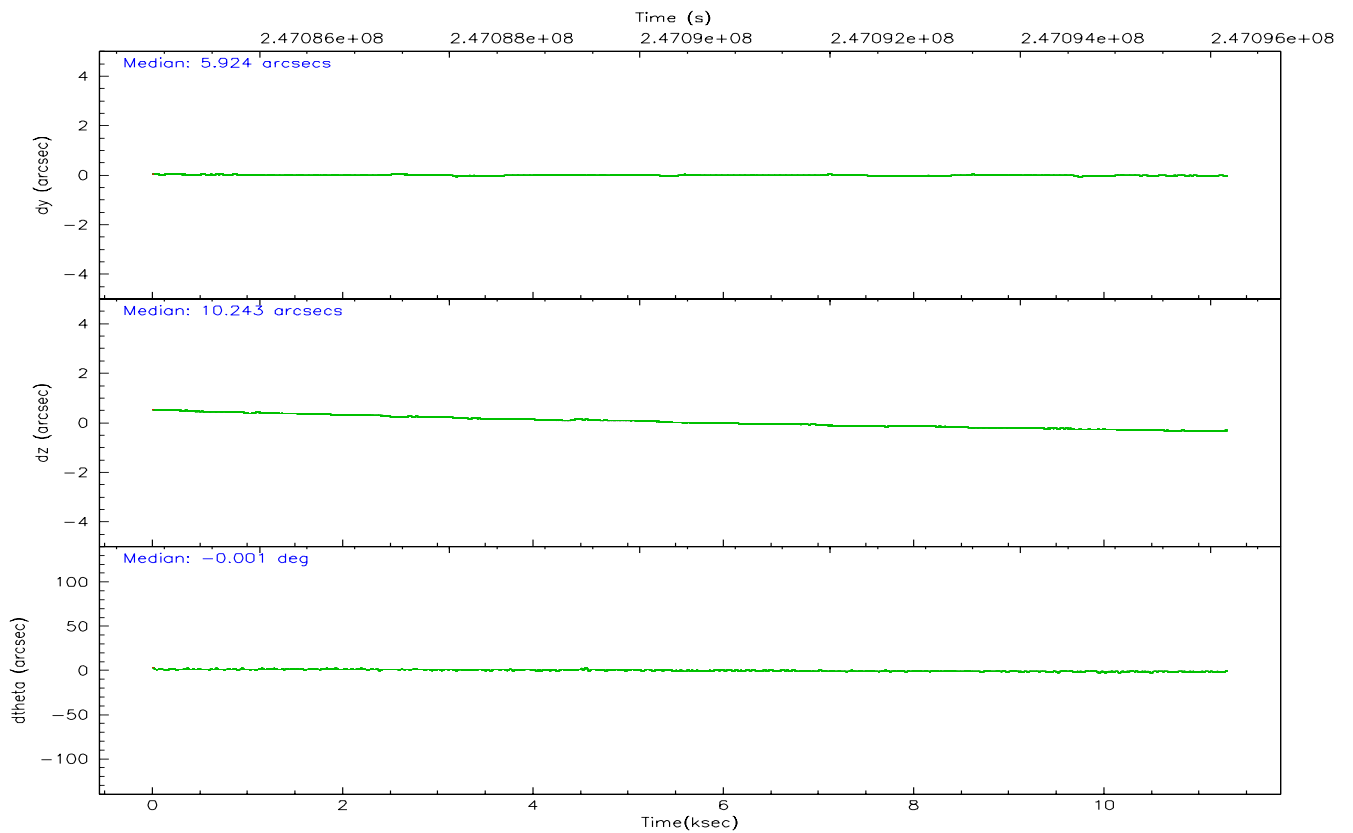
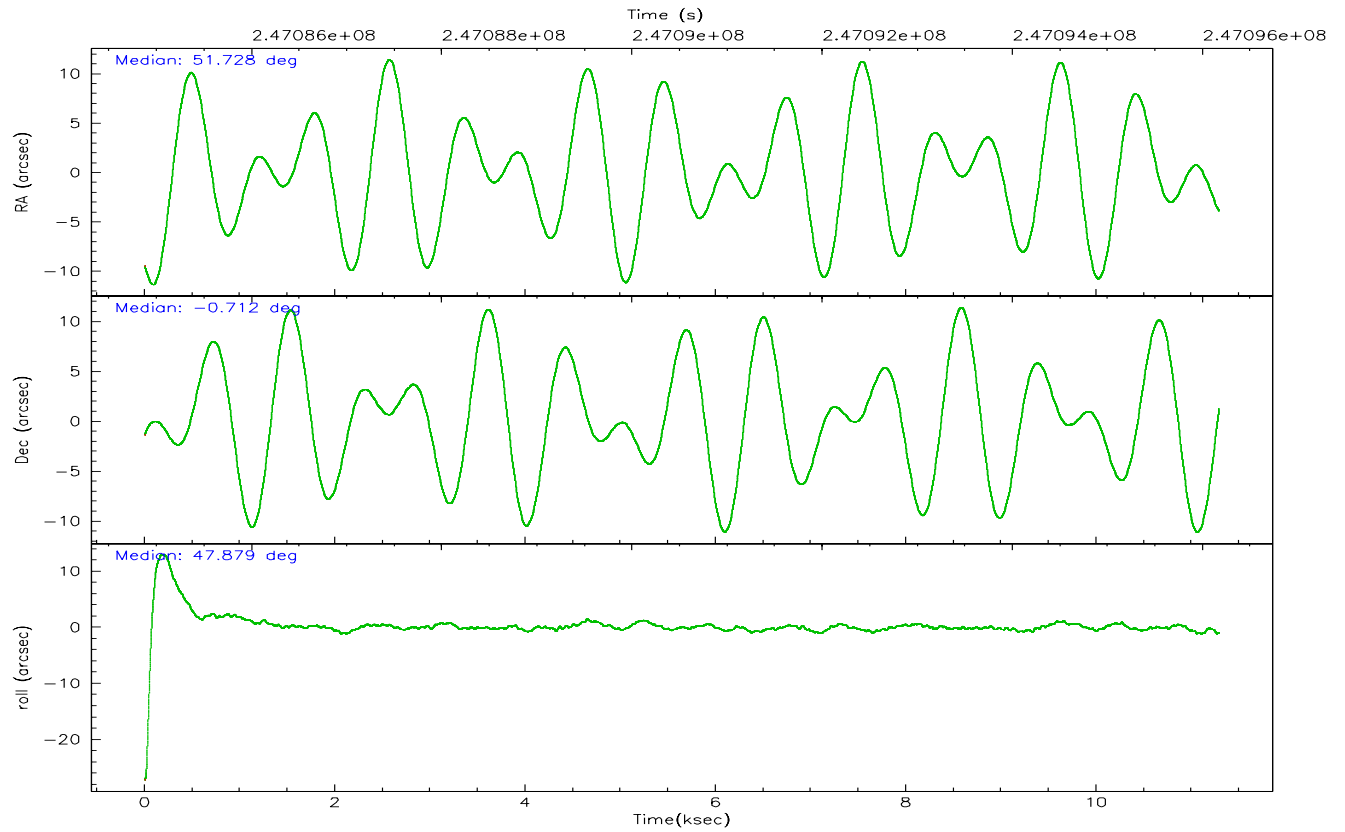
	ccd 0	ccd 1	ccd 2	ccd 3	ccd 6
grade 0 events	2393	2663	2381	4665	2601
	3%	4%	3%	6%	3%
grade 1 events	31	36	41	45	30
	0%	0%	0%	0%	0%
grade 2 events	1587	1649	1544	1600	1530
	2%	2%	2%	2%	2%
grade 3 events	725	821	680	852	788
	1%	1%	0%	1%	1%
grade 4 events	701	825	710	850	763
	1%	1%	1%	1%	1%
grade 5 events	2233	2448	2164	2841	2595
	3%	3%	3%	4%	3%
grade 6 events	1190	1504	1261	1371	1507
	1%	2%	1%	1%	2%
grade 7 events	52797	52742	60681	57356	58120
	85%	84%	87%	82%	85%

2.2 Compared Parameters

Parameter	Planned	Actual	Parameter	Planned	Actual
Instrument	ACIS	ACIS	Obspar format version number	6	6
Detector	ACIS-01236	ACIS-01236	Obspar file type	PREDICTED	ACTUAL
Grating	NONE	NONE	Obspar update status	NONE	UPDATED
Data mode	VFAINT	VFAINT	On-chip summing requested	N	N
Observation mode	POINTING	POINTING	Subarray requested	NONE	NONE
Pointing RA	51.722739	51.72833182443655	Alternating exposures requested	N	N
Pointing Dec	-0.738956	-0.7121932737675296	Primary exposure time	0.000000	3.1
Pointing Roll	47.671394	47.88011058577265			
SIM focus pos (mm)	-0.782348	-0.7809083437167272			
SIM defocus (mm)	0	0.001439871863259334			
SIM translation stage pos (mm)	-229.442463	-229.4438428438578			
SIM translation stage offset (mm)	-4.15	-4.148610159071865			
Observation start time	247086176.184000	247084699.59248			
Observation start date	2005-10-30T19:01:52	2005-10-30T18:38:19			
Observation end time	247096176.184000	247097488.51807			
Observation end date	2005-10-30T21:48:32	2005-10-30T22:11:28			
Read mode	TIMED	TIMED			

2.3 Aspect



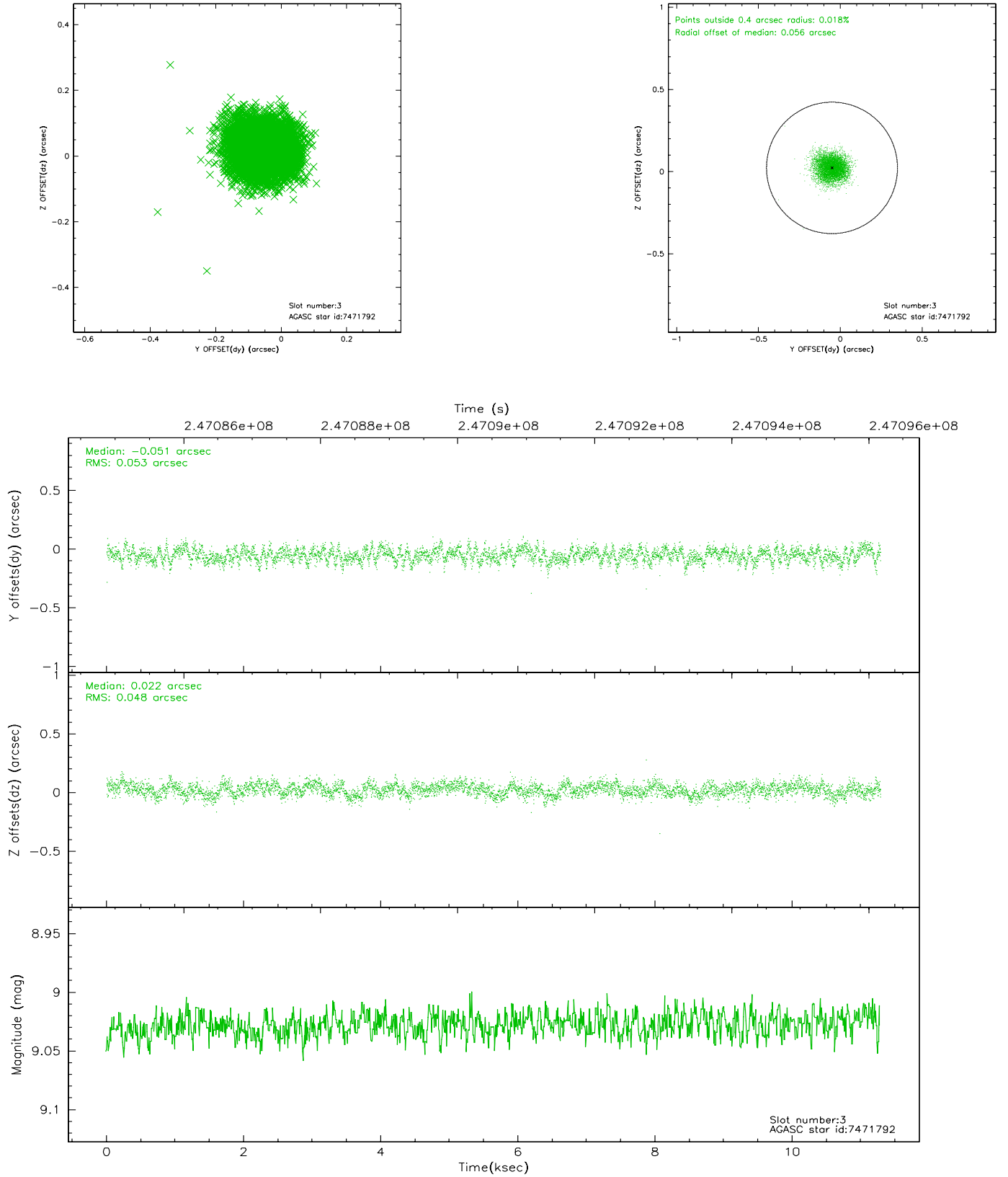


Slot Statistics

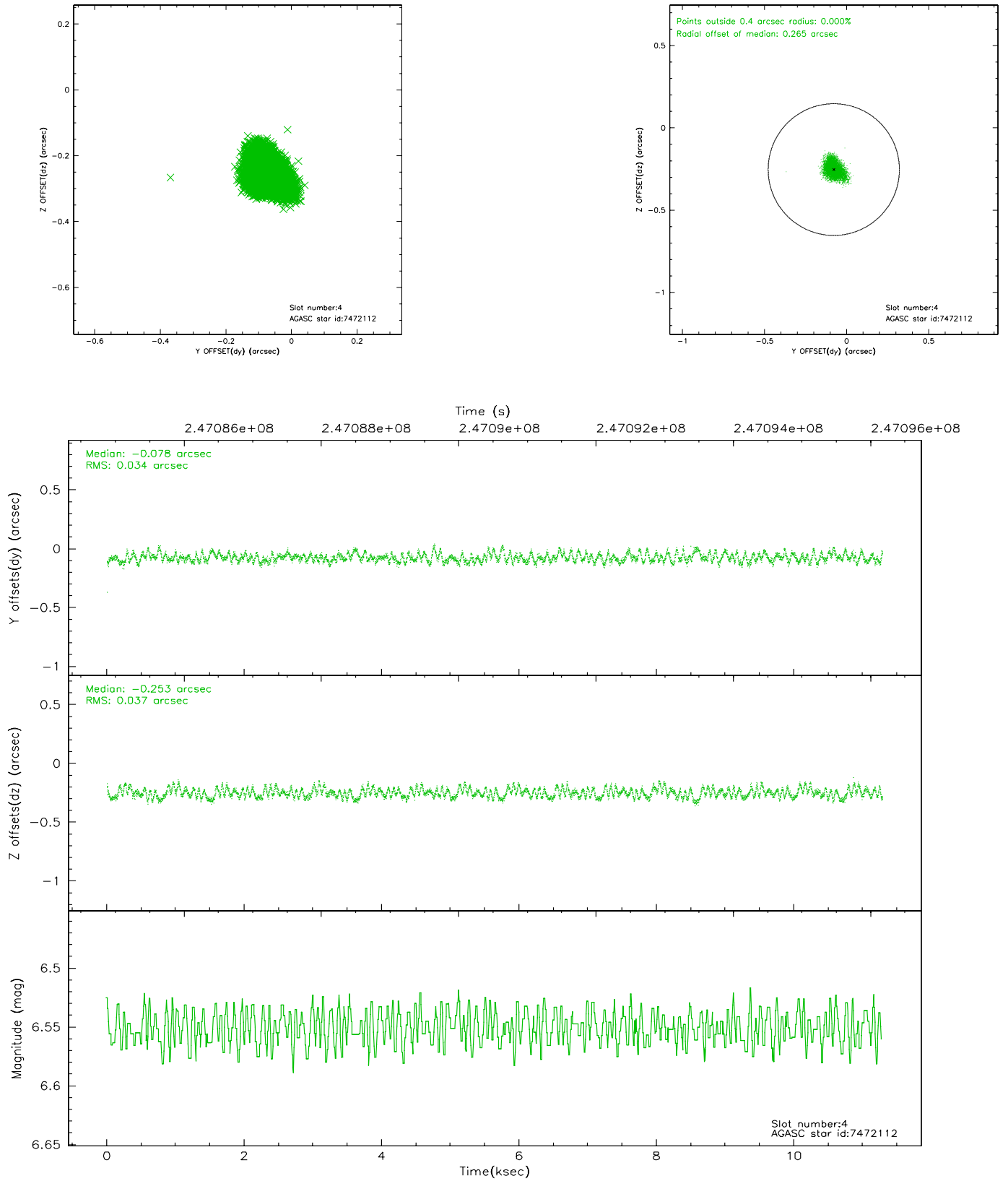
slot	status	id	mag	n_pts	med_dy	med_dz	dr1	dr2	ra	dec	mean_y	mean_z
0	FID	ACIS-I-1	7.25	2754	0.058	-0.014	0.008	0.014	0.000000	0.000000	933.75	-918.91
1	FID	ACIS-I-5	7.23	2753	-0.192	0.070	0.008	0.013	0.000000	0.000000	-1814.32	978.45
2	FID	ACIS-I-6	7.25	2754	0.042	0.014	0.009	0.014	0.000000	0.000000	398.84	1623.38
3	GUIDE	7471792	9.03	5501	-0.051	0.022	0.076	0.121	51.669944	0.071818	2030.03	2106.02
4	GUIDE	7472112	6.55	5507	-0.078	-0.253	0.054	0.085	51.705167	0.026178	1994.35	1901.76
5	GUIDE	617223568	8.61	5508	-0.053	0.188	0.079	0.120	52.227027	-0.417531	2078.38	-563.09
6	GUIDE	617226472	8.72	5502	0.135	0.031	0.065	0.106	51.517896	-0.643841	-242.54	775.74
7	GUIDE	617227784	9.10	5505	0.046	0.008	0.078	0.128	51.447692	-0.728205	-637.87	758.08

2.4 Star Slots

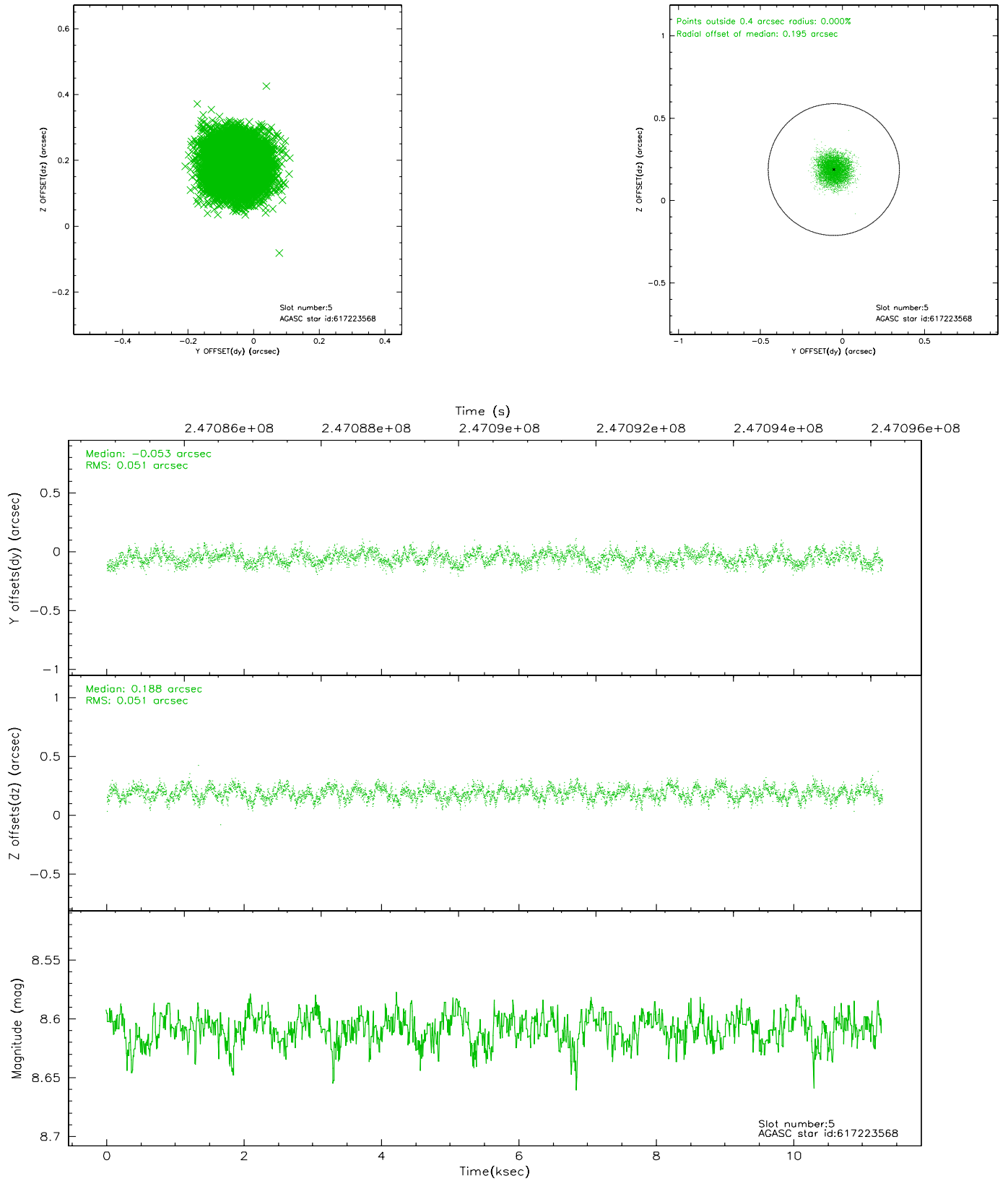
2.4.1 Slot 3



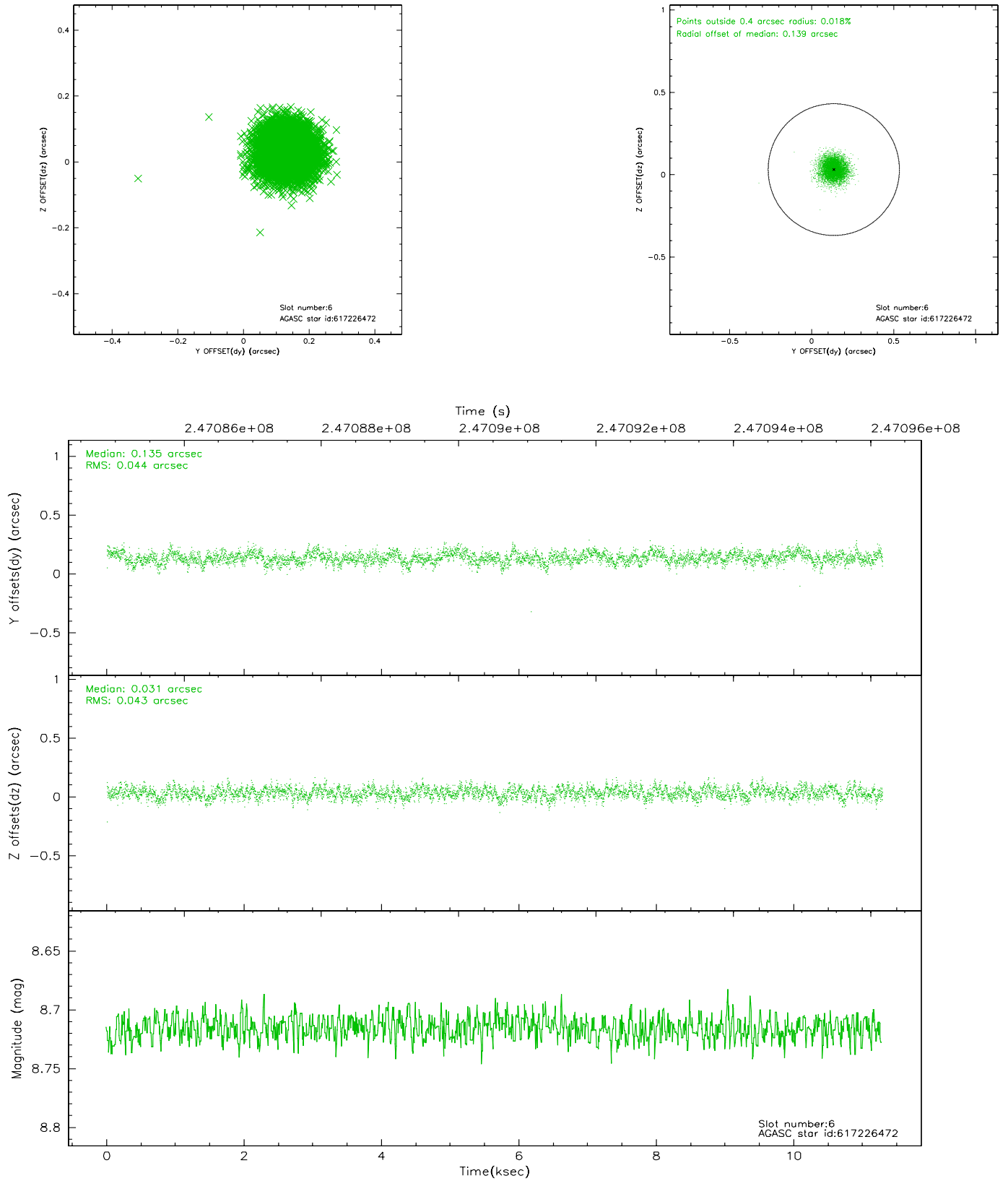
2.4.2 Slot 4



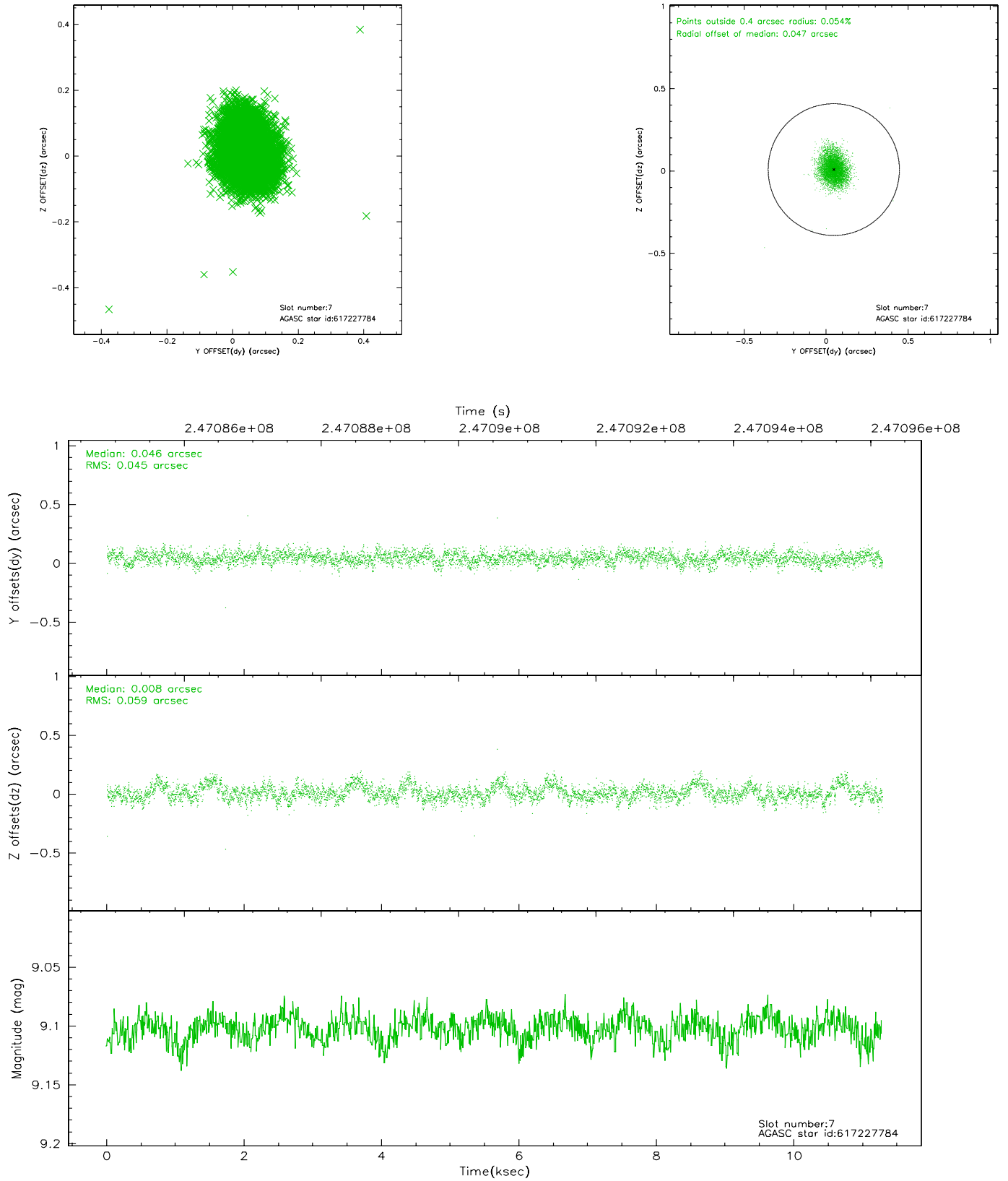
2.4.3 Slot 5



2.4.4 Slot 6

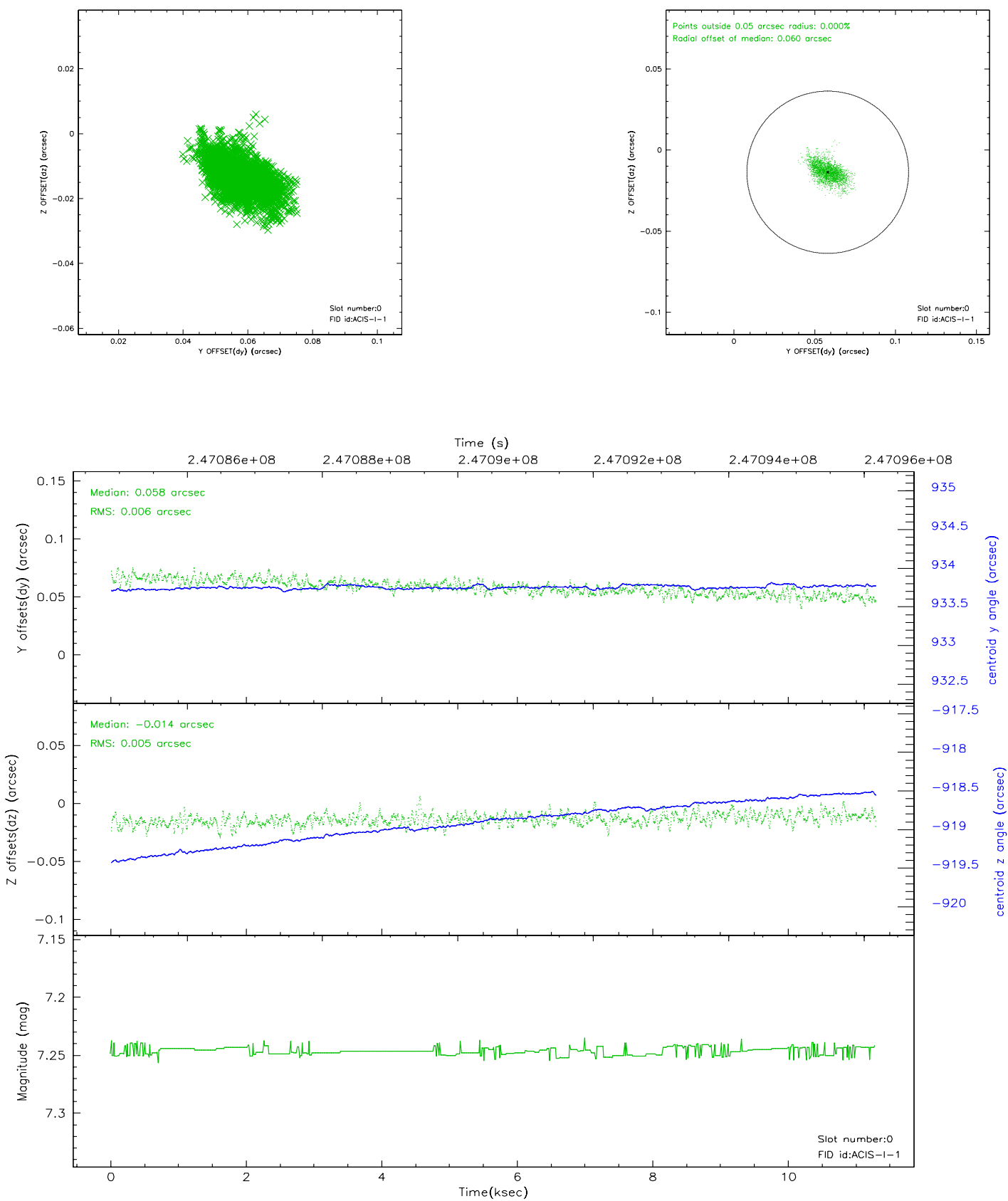


2.4.5 Slot 7

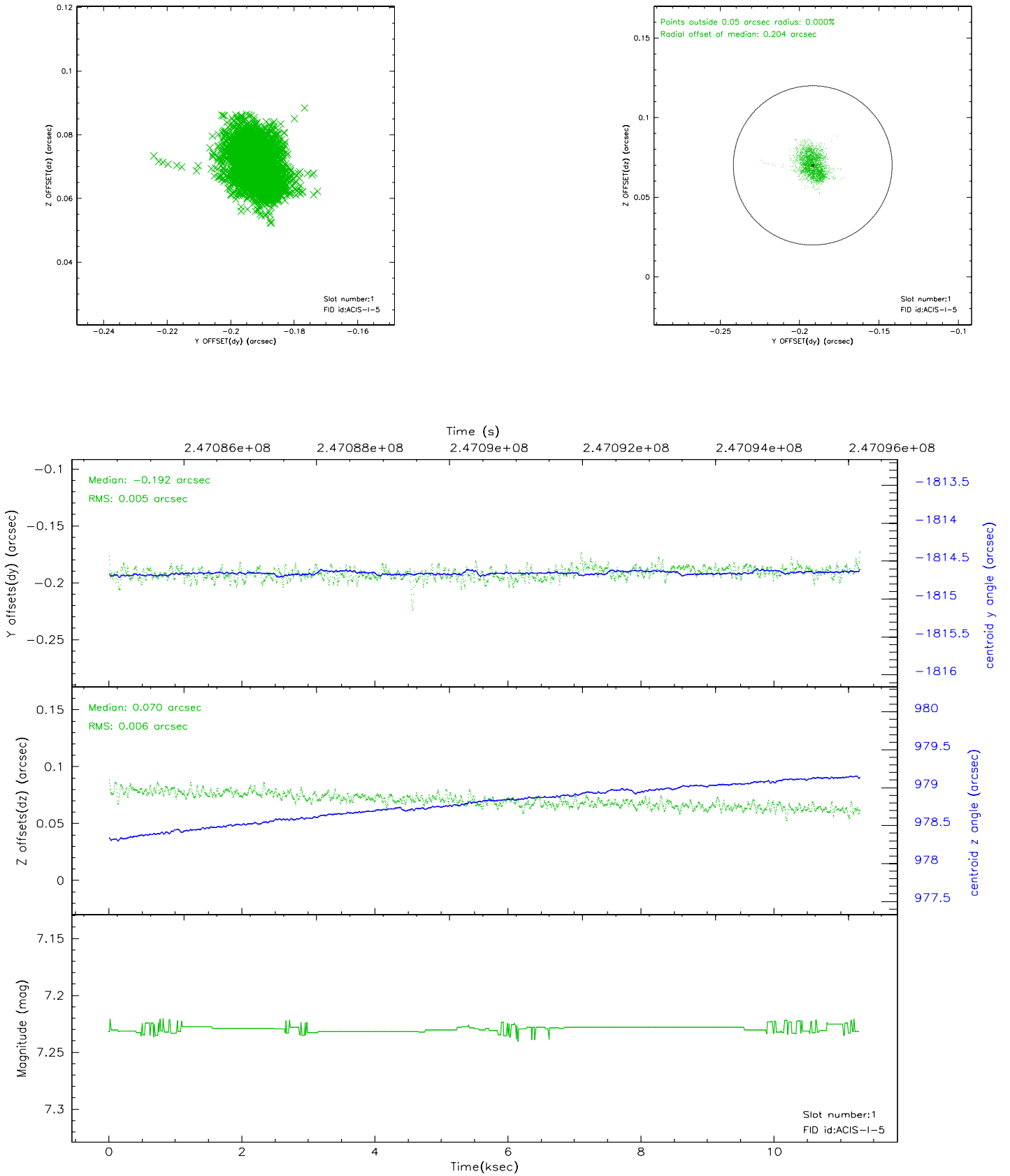


2.5 FID Slots

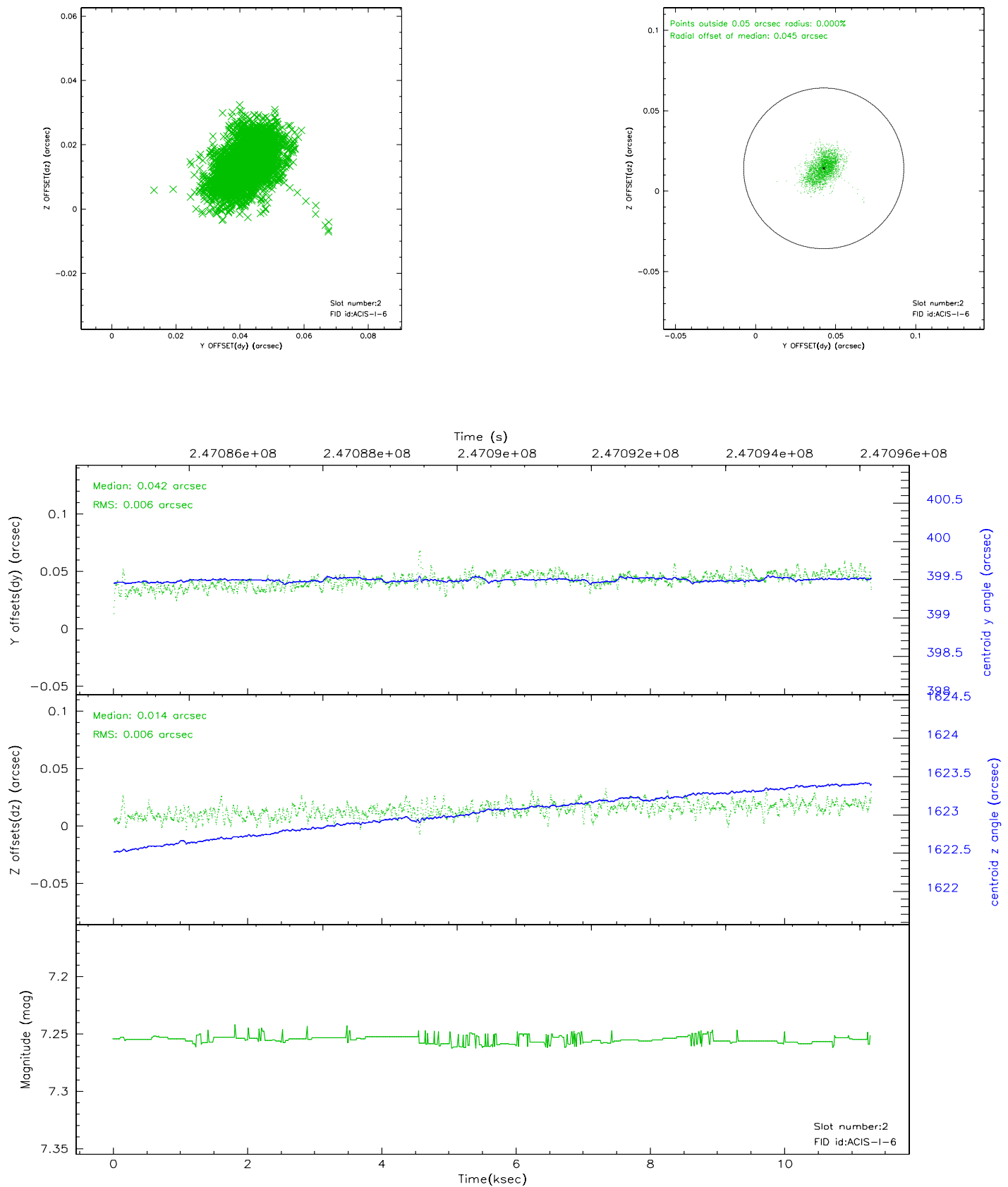
2.5.1 Slot 0



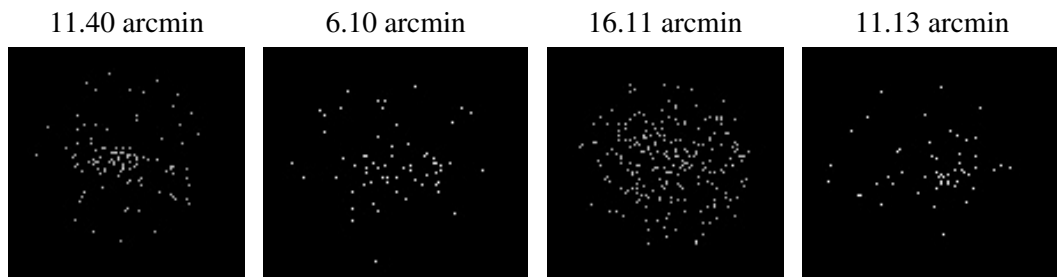
2.5.2 Slot 1



2.5.3 Slot 2



3 Point Sources



A Summary

A.1 Status

V&V Scientist	Jen Lauer
V&V Date (YYYY-MM-DD)	2006.04.04
V&V Edition	1
V&V Disposition and Status	OK
V&V Charge Time	10.05019

A.2 Comments