

V&V Reference Report

L2 ASCDS Version : 7.6.7.1

Observation 5770 - L2 Version 002
Chandra X-Ray Center

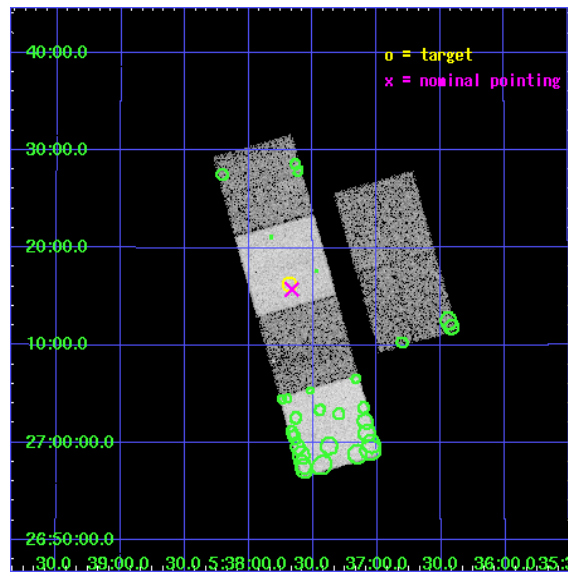
L2 Processing Date : Apr 7 2006

Contents

1	Front	2
2	OBI	3
2.1	OBI	3
2.1.1	Images	3
2.1.2	Bias	3
2.1.3	Parameters	4
2.1.4	Events	4
2.2	Compared Parameters	5
2.3	Aspect	6
2.4	Star Slots	9
2.4.1	Slot 3	9
2.4.2	Slot 4	10
2.4.3	Slot 5	11
2.4.4	Slot 6	12
2.5	FID Slots	13
2.5.1	Slot 0	13
2.5.2	Slot 1	14
2.5.3	Slot 2	15
3	Point Sources	16
A	Summary	17
A.1	Status	17
A.2	Comments	17

1 Front

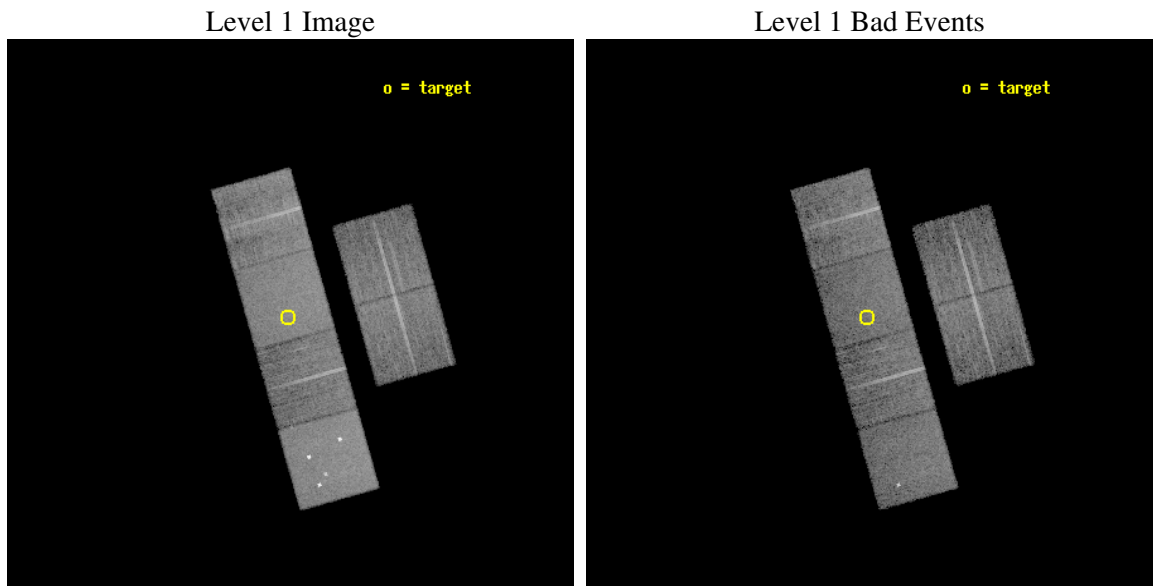
seq_num	800483
obs_id	5770
title	Alternate: The Eclipsing Binary ET Tau
observer	Professor Gordon Garmire
object	ET Tau
dtcycle	0
cycle	P
ra_targ	84.420417
dec_targ	27.271278
ra_nom	84.415683246614
dec_nom	27.262597617669
roll_nom	254.20792260328
revision	2
ontime	10022.399962664
livetime	9895.4902995717
ontime2	10022.399962664
ontime3	10022.399962664
ontime5	10022.399962664
ontime6	10022.399962664
ontime7	10022.399962664
ontime8	10022.399962664
l2events	119498



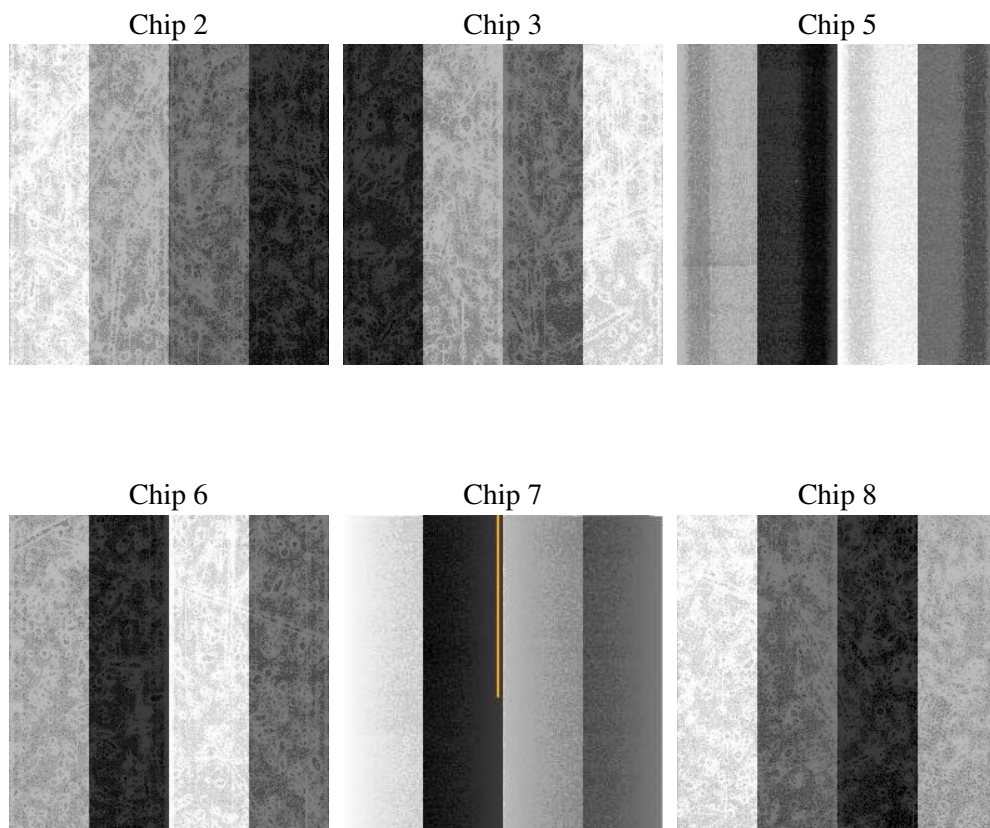
2 OBI

2.1 OBI

2.1.1 Images



2.1.2 Bias



2.1.3 Parameters

obi_num	0
ascdsver	7.6.7.1
caldbver	3.2.1
date	2006-04-07T14:55:36
revision	2

sched_exp_time	10000.000000
ontime	10040.640082598
ontime2	10040.640082598
ontime3	10040.640102506
ontime5	10040.640082598
ontime6	10040.640082598
ontime7	10040.640082598
ontime8	10043.881102711
l1events	542716

2.1.4 Events

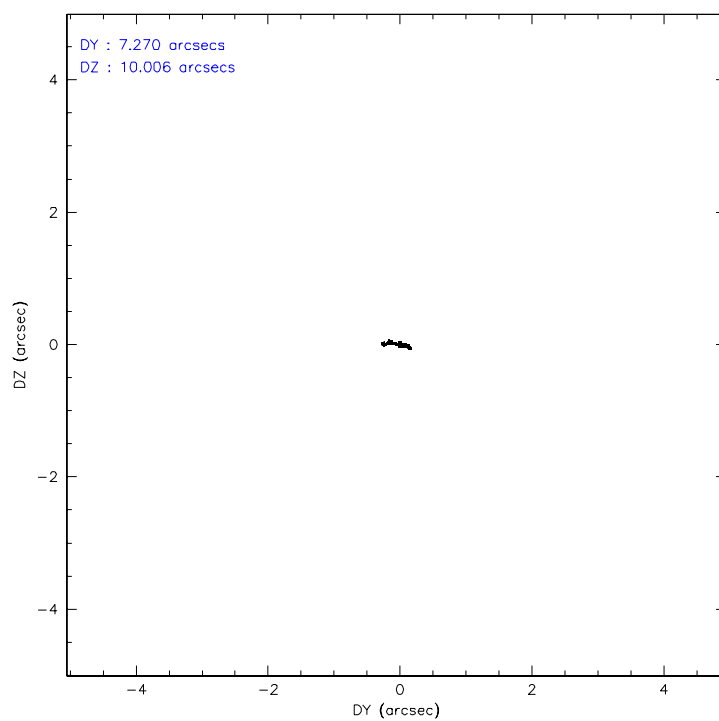
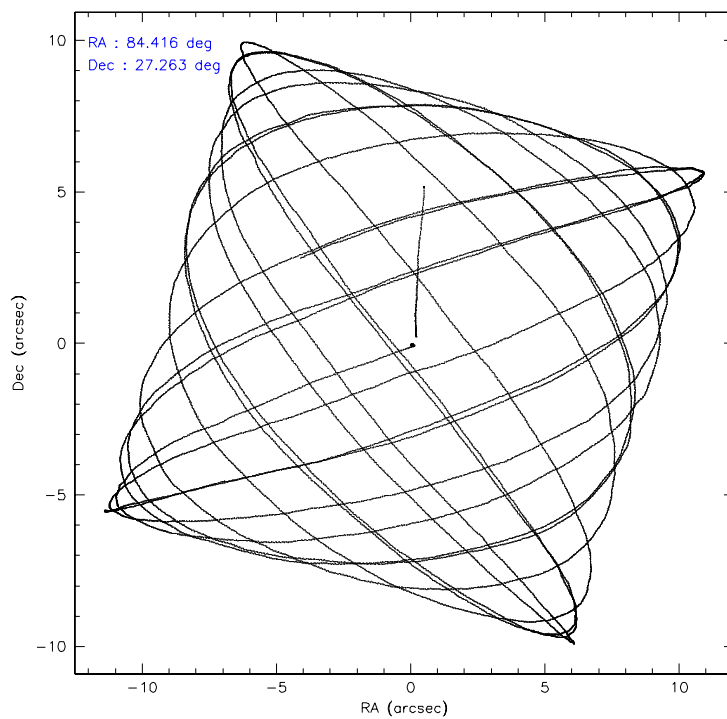
	ccd 2	ccd 3	ccd 5	ccd 6	ccd 7	ccd 8
level 1 events	76659	72903	119556	74480	102853	96265
rejected events	67471	63785	63580	65076	63096	74667
rejected %	88%	87%	53%	87%	61%	77%

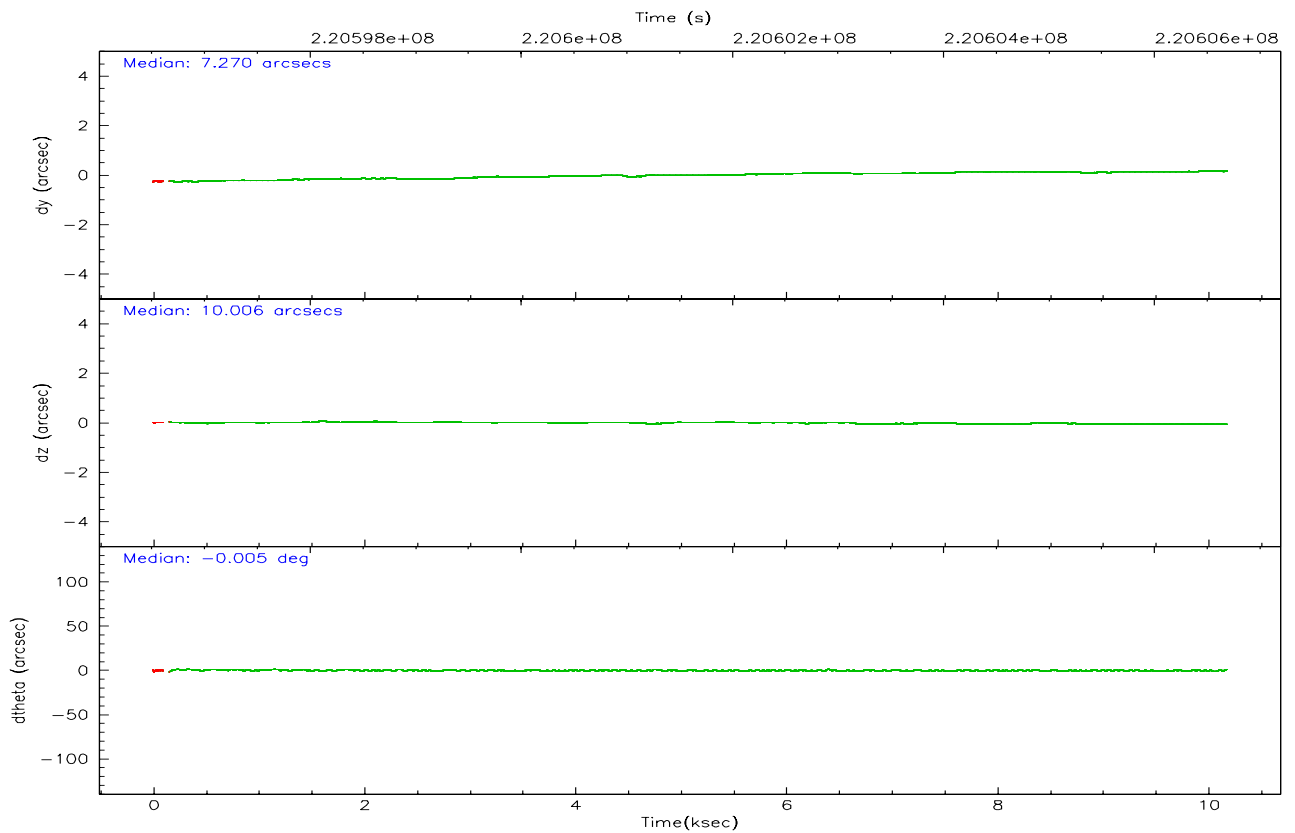
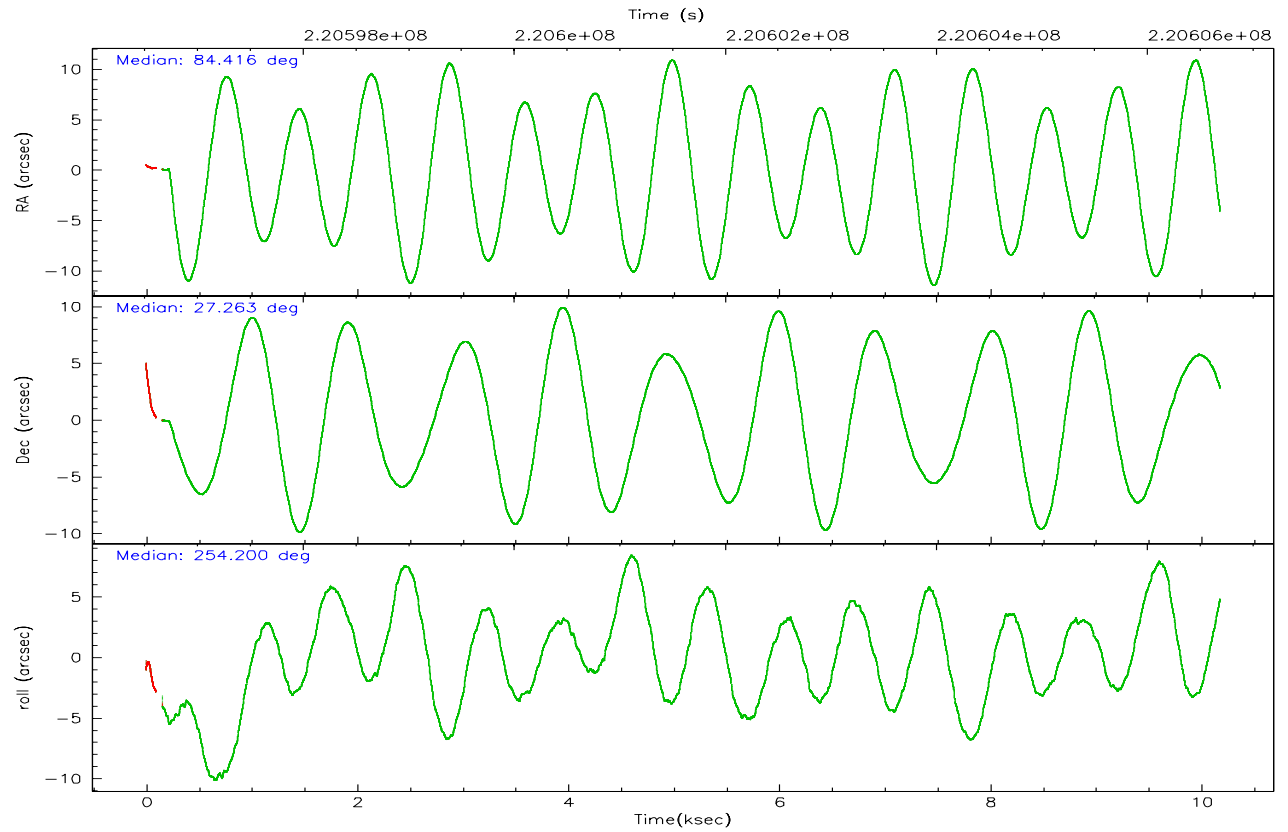
	ccd 2	ccd 3	ccd 5	ccd 6	ccd 7	ccd 8
grade 0 events	4050	3983	8959	3834	2372	6981
	5%	5%	7%	5%	2%	7%
grade 1 events	54	32	100	41	67	63
	0%	0%	0%	0%	0%	0%
grade 2 events	1956	1728	16257	1981	10074	4637
	2%	2%	13%	2%	9%	4%
grade 3 events	838	853	1165	911	2004	2511
	1%	1%	0%	1%	1%	2%
grade 4 events	865	884	1101	871	1921	2183
	1%	1%	0%	1%	1%	2%
grade 5 events	3033	3324	5454	3425	6719	4355
	3%	4%	4%	4%	6%	4%
grade 6 events	1494	1685	28607	1831	23449	5334
	1%	2%	23%	2%	22%	5%
grade 7 events	64369	60414	57913	61586	56247	70201
	83%	82%	48%	82%	54%	72%

2.2 Compared Parameters

Parameter	Planned	Actual	Parameter	Planned	Actual
Instrument	ACIS	ACIS	Obspar format version number	6	6
Detector	ACIS-235678	ACIS-235678	Obspar file type	PREDICTED	ACTUAL
Grating	NONE	NONE	Obspar update status	NONE	UPDATED
Data mode	FAINT	FAINT	On-chip summing requested	N	N
Observation mode	POINTING	POINTING	Subarray requested	NONE	NONE
Pointing RA	84.407745	84.41568324661435	Alternating exposures requested	N	N
Pointing Dec	27.288881	27.26259761766891	Primary exposure time	0.000000	3.2
Pointing Roll	254.054923	254.2079226032797			
SIM focus pos (mm)	-0.684267	-0.6828225247311905			
SIM defocus (mm)	0	0.001444936568705701			
SIM translation stage pos (mm)	-190.132523	-190.1400660498719			
SIM translation stage offset (mm)	0	0.00754346686406393			
Observation start time	220596687.184000	220595686.42217			
Observation start date	2004-12-28T04:50:23	2004-12-28T04:34:46			
Observation end time	220606687.184000	220607676.87271			
Observation end date	2004-12-28T07:37:03	2004-12-28T07:54:36			
Read mode	TIMED	TIMED			

2.3 Aspect



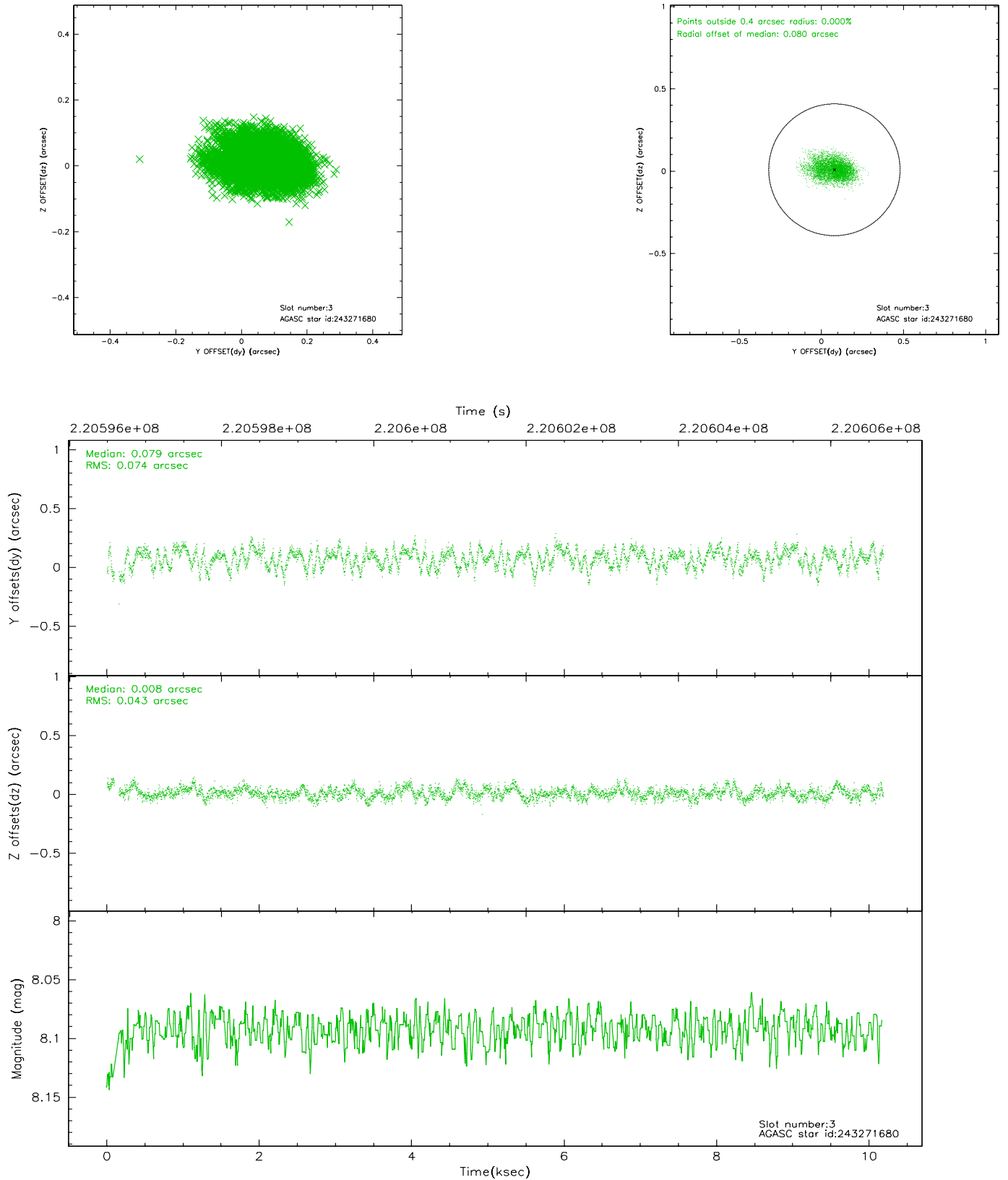


Slot Statistics

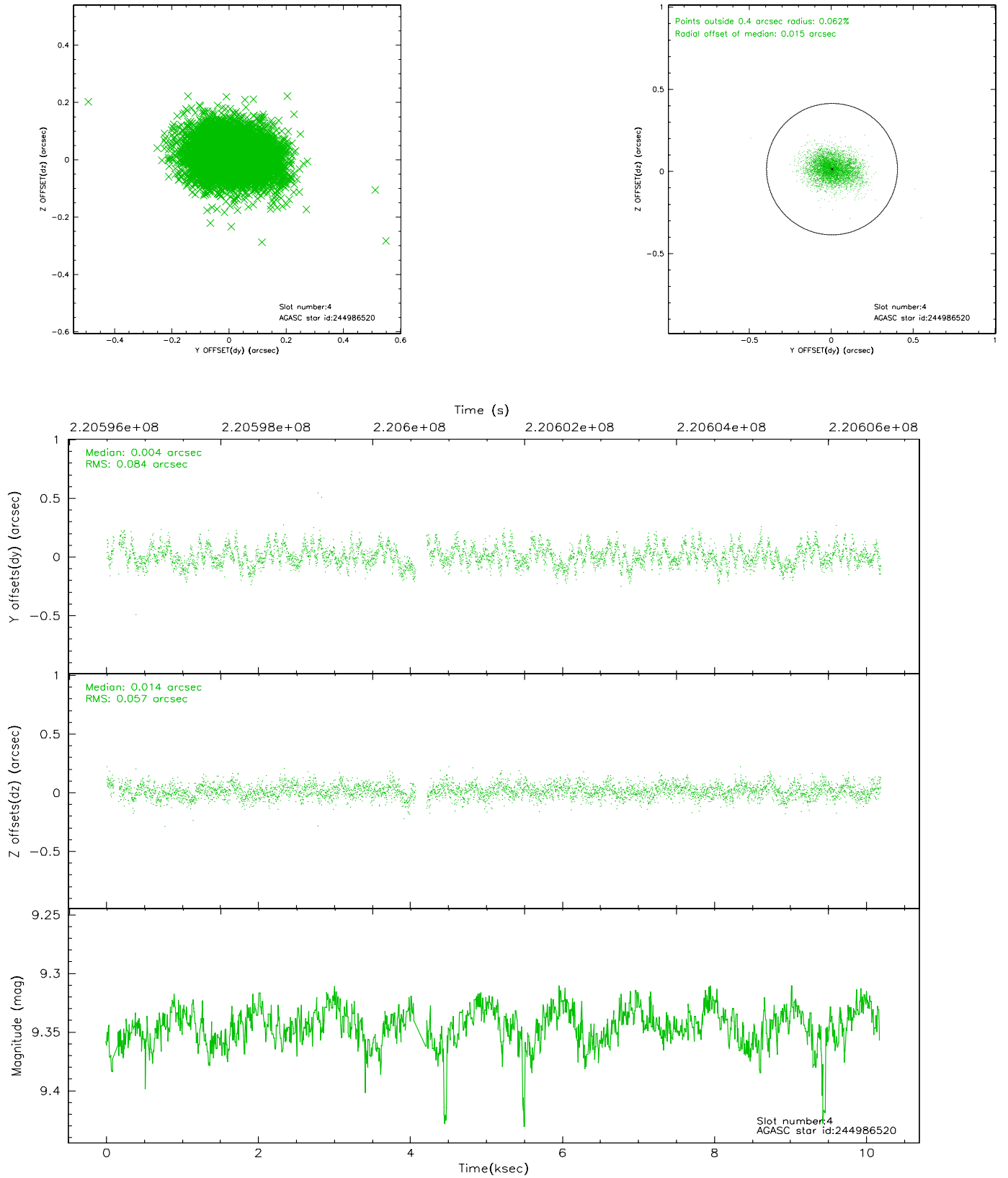
slot	status	id	mag	n_pts	med_dy	med_dz	dr1	dr2	ra	dec	mean_y	mean_z
0	FID	ACIS-S-2	7.10	2470	-0.043	-0.019	0.005	0.010	0.000000	0.000000	-760.03	-1731.28
1	FID	ACIS-S-4	7.20	2469	0.040	0.023	0.006	0.010	0.000000	0.000000	2153.06	176.76
2	FID	ACIS-S-6	7.35	2468	-0.025	0.003	0.007	0.011	0.000000	0.000000	402.60	814.70
3	GUIDE	243271680	8.09	4938	0.079	0.008	0.091	0.149	83.552341	26.881746	2155.70	-2240.49
4	GUIDE	244986520	9.34	4859	0.004	0.014	0.108	0.177	85.259892	27.682776	-2118.43	2219.56
5	GUIDE	244987640	8.56	4937	-0.113	-0.027	0.061	0.098	84.165830	27.911751	-1945.47	-1355.83
6	GUIDE	244982936	8.92	4937	0.031	0.001	0.071	0.114	84.571386	26.917175	1141.97	872.77
7	MONITOR		0.00	0	0.000	0.000	0.000	0.000	0.000000	0.000000	0.00	0.00

2.4 Star Slots

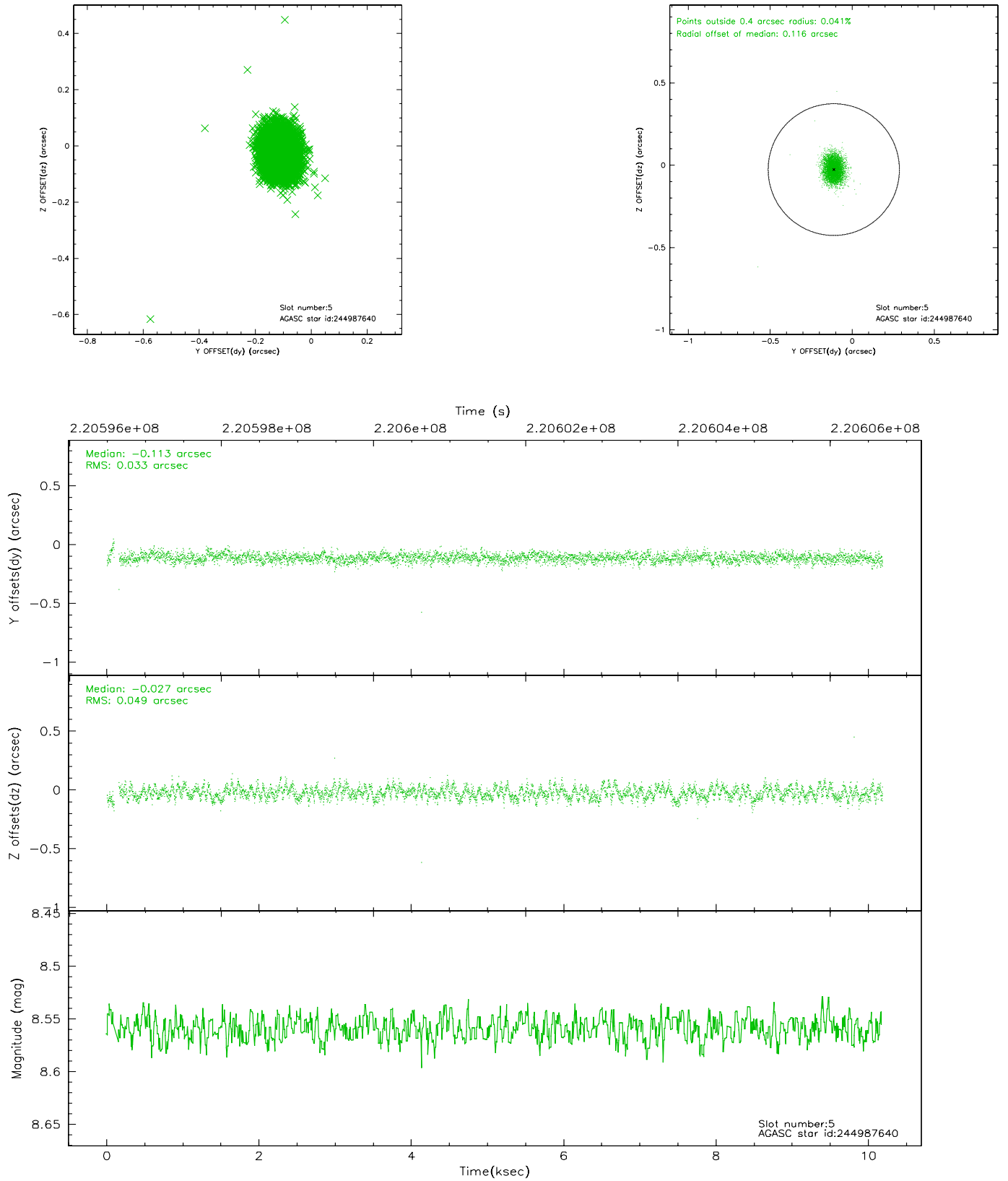
2.4.1 Slot 3



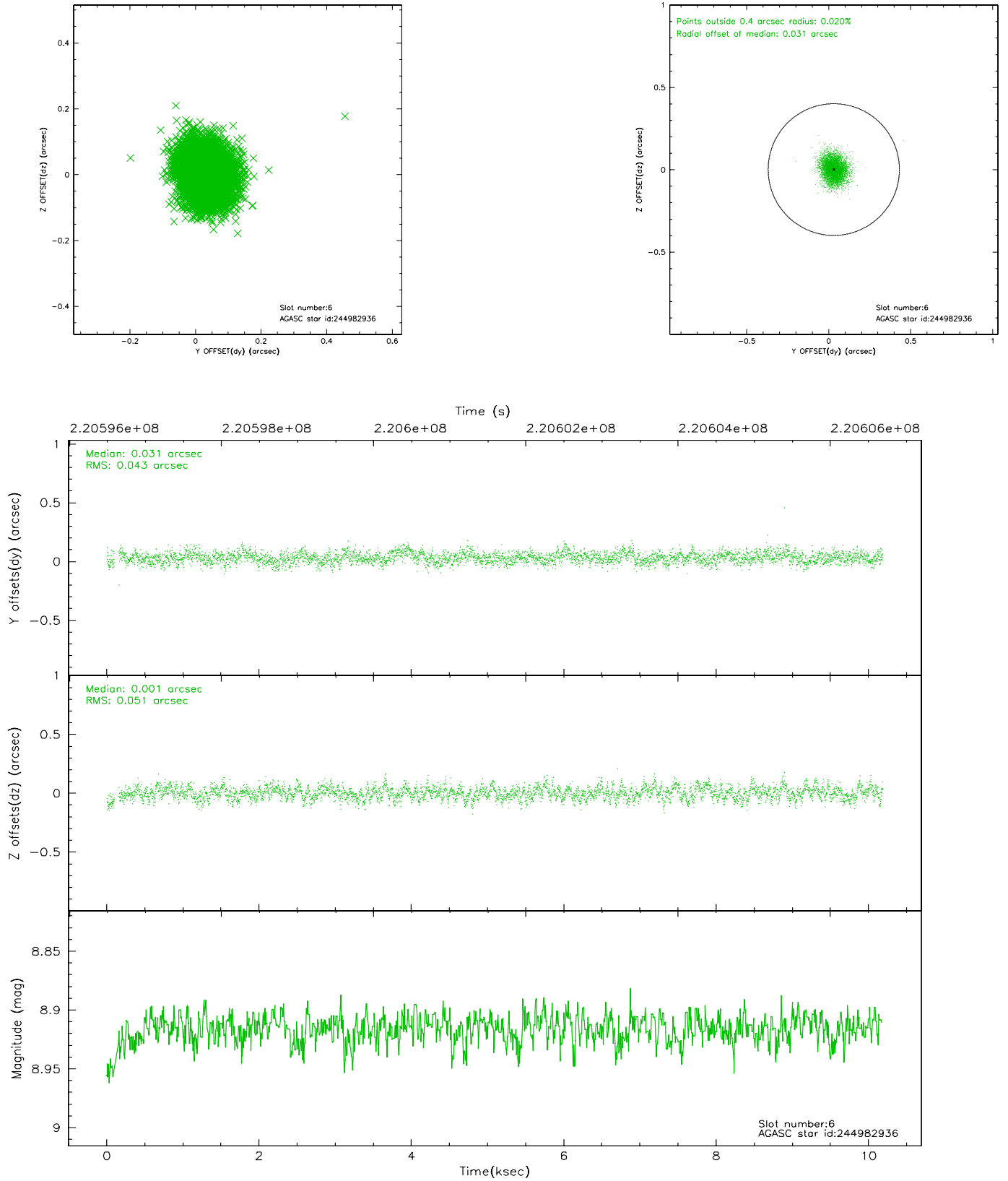
2.4.2 Slot 4



2.4.3 Slot 5

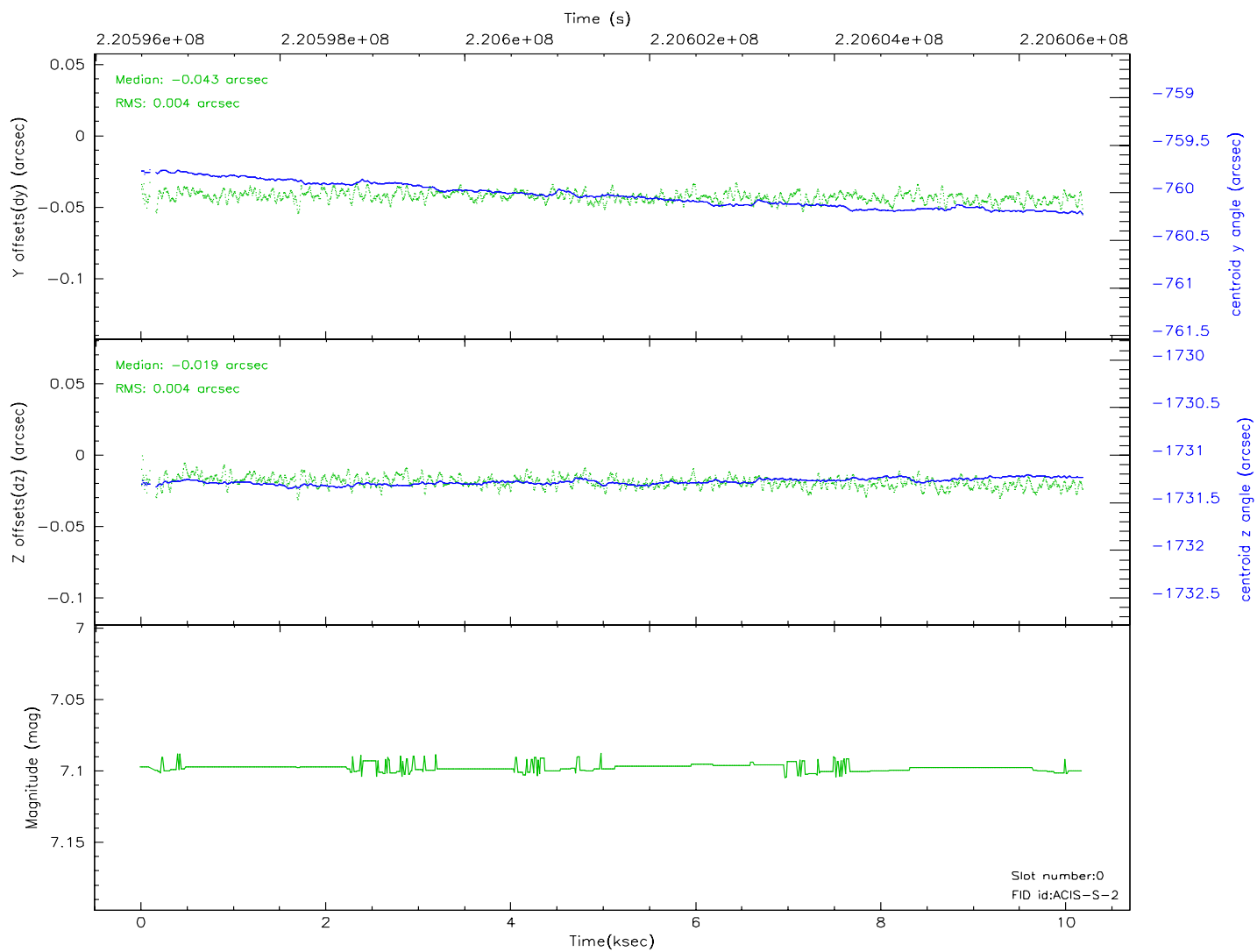
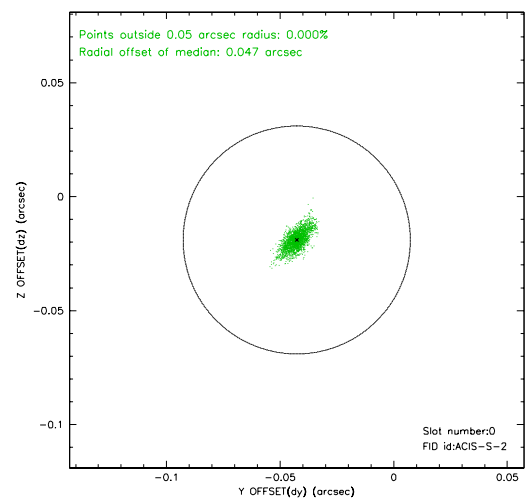
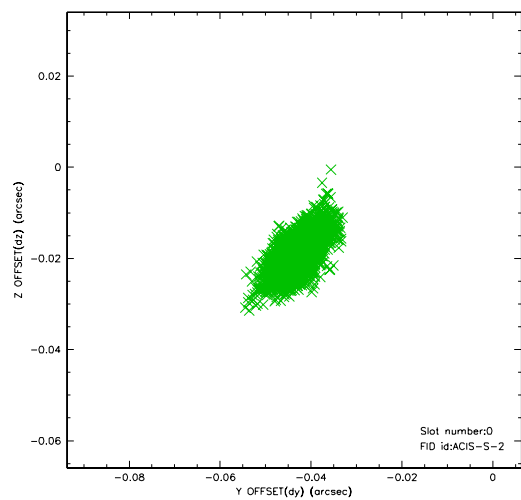


2.4.4 Slot 6

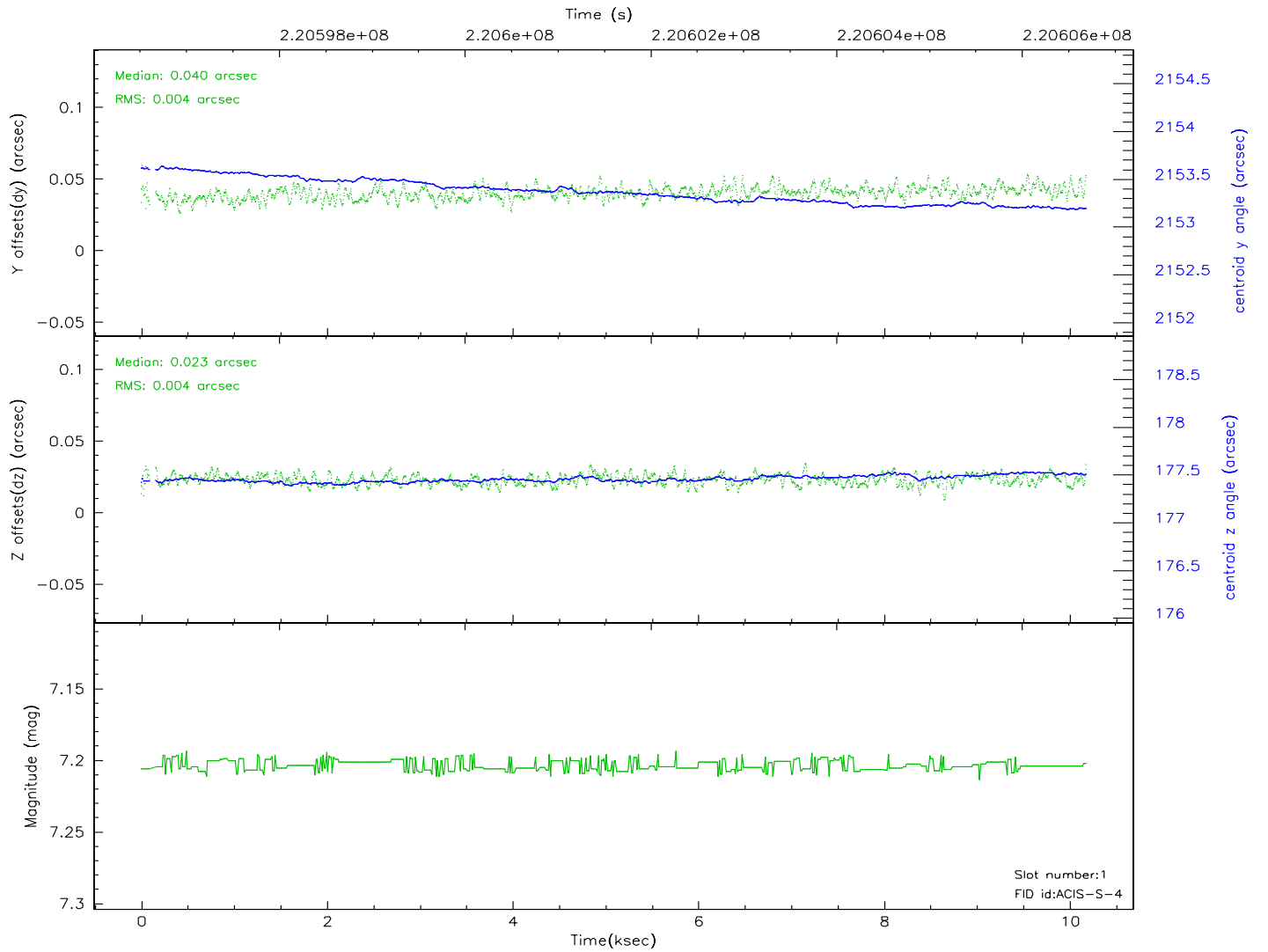
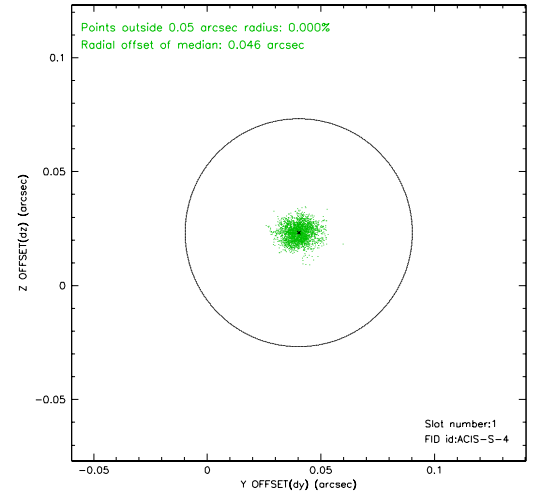
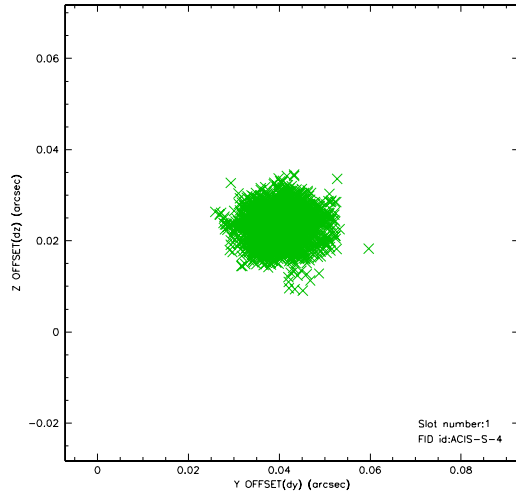


2.5 FID Slots

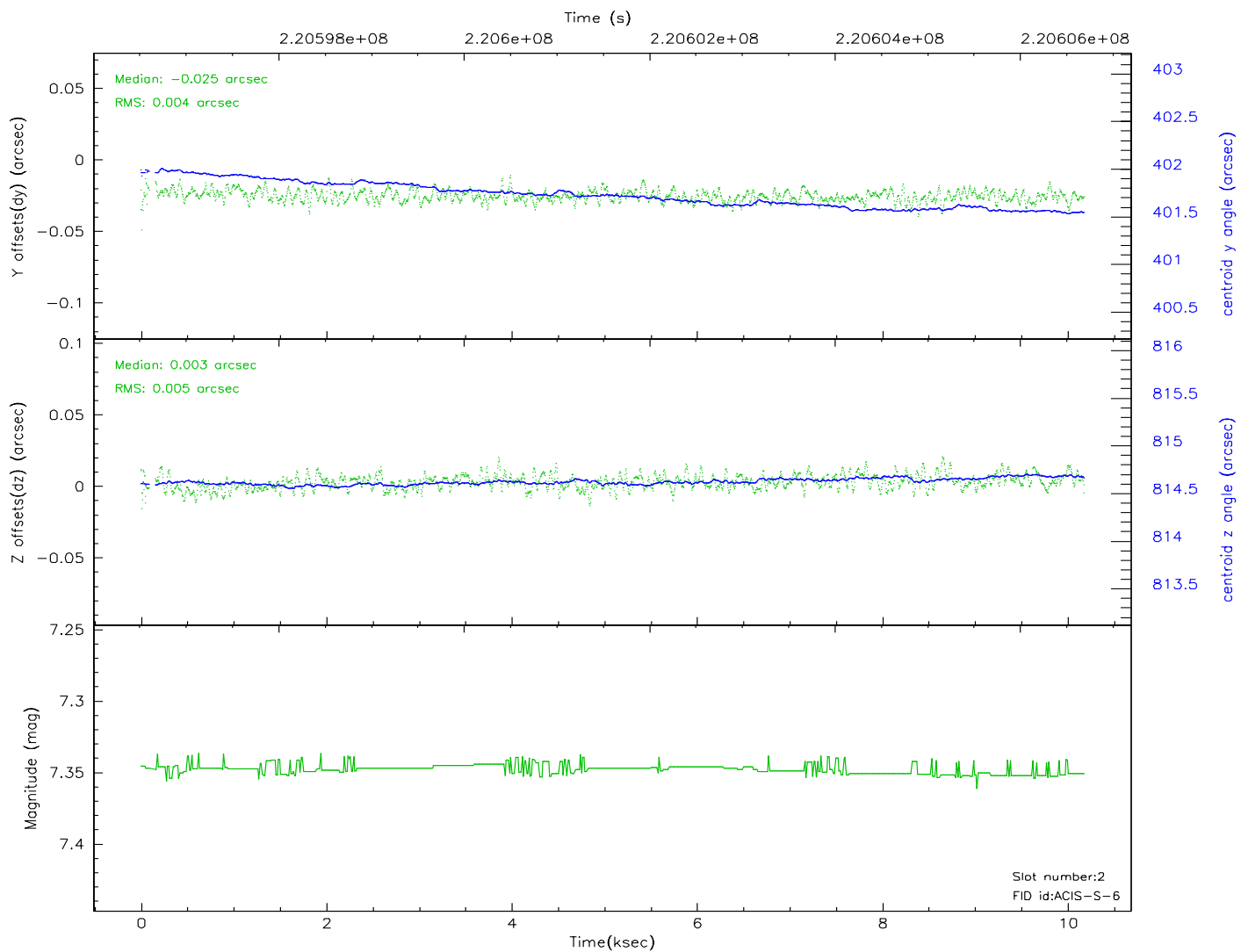
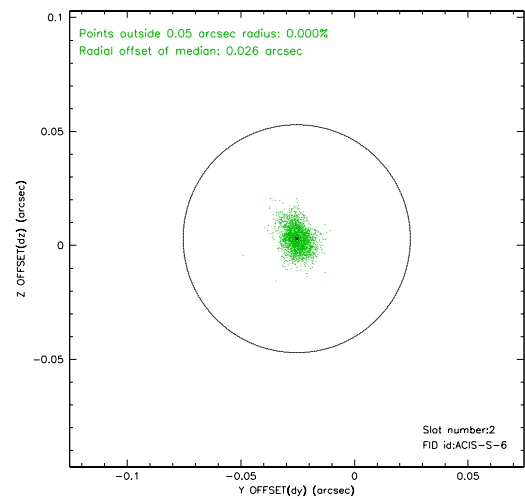
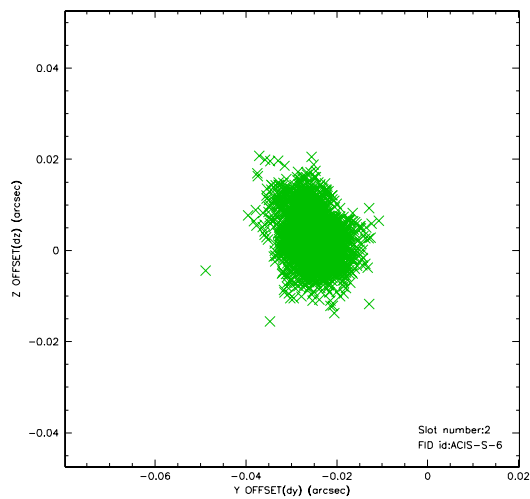
2.5.1 Slot 0



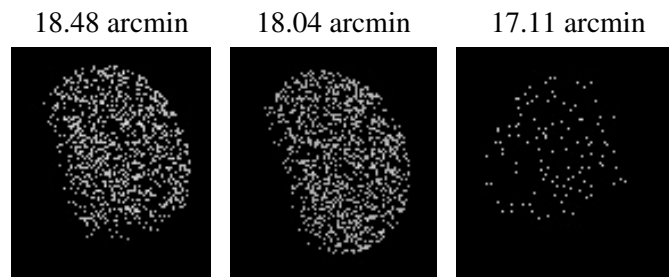
2.5.2 Slot 1



2.5.3 Slot 2



3 Point Sources



A Summary

A.1 Status

V&V Scientist	Beth Sundheim
V&V Date (YYYY-MM-DD)	2006.04.07
V&V Edition	1
V&V Disposition and Status	OK
V&V Charge Time	10.02239

A.2 Comments