

# V&V Reference Report

## L2 ASCDS Version : 8.4.4

Observation 57440 - L2 Version 2  
Chandra X-Ray Center

L2 Processing Date : May 26 2012

## Contents

<b>1</b>	<b>Front</b>	<b>2</b>
<b>2</b>	<b>OBI</b>	<b>3</b>
2.1	OBI . . . . .	3
2.1.1	Images . . . . .	3
2.1.2	Bias . . . . .	3
2.1.3	Parameters . . . . .	4
2.1.4	Events . . . . .	4
2.2	Compared Parameters . . . . .	5
2.3	Star Slots . . . . .	6
2.4	FID Slots . . . . .	6
<b>A</b>	<b>Summary</b>	<b>7</b>
A.1	Status . . . . .	7
A.2	Comments . . . . .	7



# 1 Front

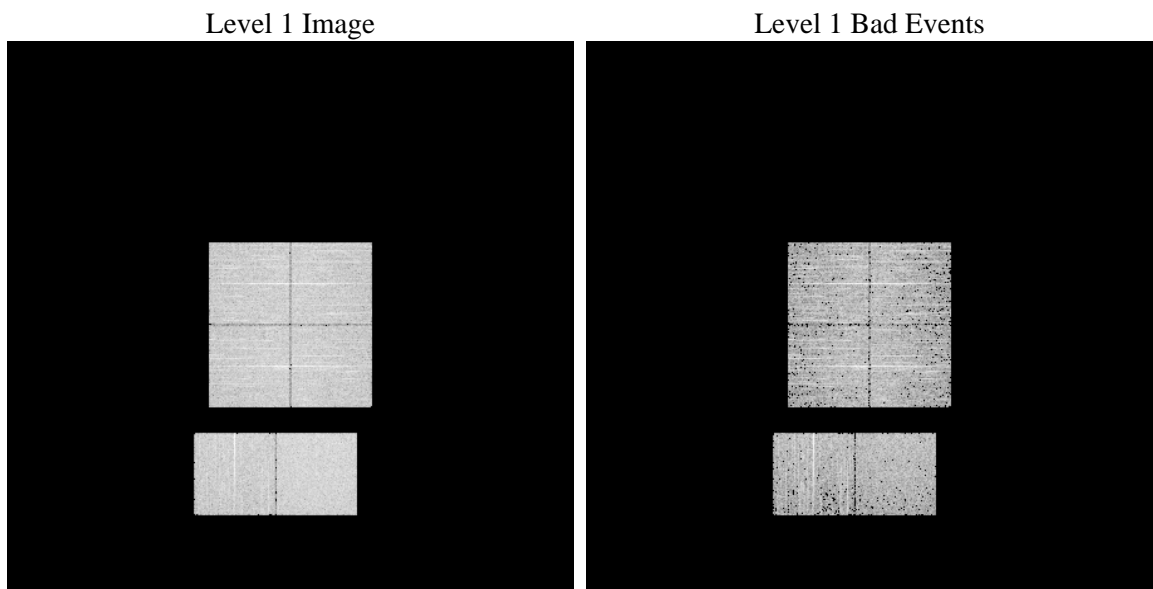
seq_num	&#160	Sequence number
obs_id	57440	Observation id
title	ACIS-012367 diagnostics	Proposal title
observer	CHANDRA engineering request/realtime commanding	Principal investig
object	&#160	Source name
dtcycle	0	&#160
cycle	P	events from which exps? Prim/Second/Both
ra_targ	0.0	Observer's specified target RA [deg]
dec_targ	0.0	Observer's specified target Dec [deg]
ra_nom	222.94314437512	Nominal RA [deg]
dec_nom	-62.987415665464	Nominal Dec [deg]
roll_nom	121.24212096774	Nominal Roll [deg]
revision	2	Processing version of data
ontime	2792.9974501729	Sum of GTIs [s]
livetime	2757.6308347177	Livetime [s]
ontime0	2792.9564101696	Sum of GTIs [s]
ontime1	2792.9153701663	Sum of GTIs [s]
ontime2	2792.874330163	Sum of GTIs [s]
ontime3	2793.0384901762	Sum of GTIs [s]
ontime6	2792.8332901597	Sum of GTIs [s]
ontime7	2792.9974501729	Sum of GTIs [s]
l2events	182898	Number of level 2 events



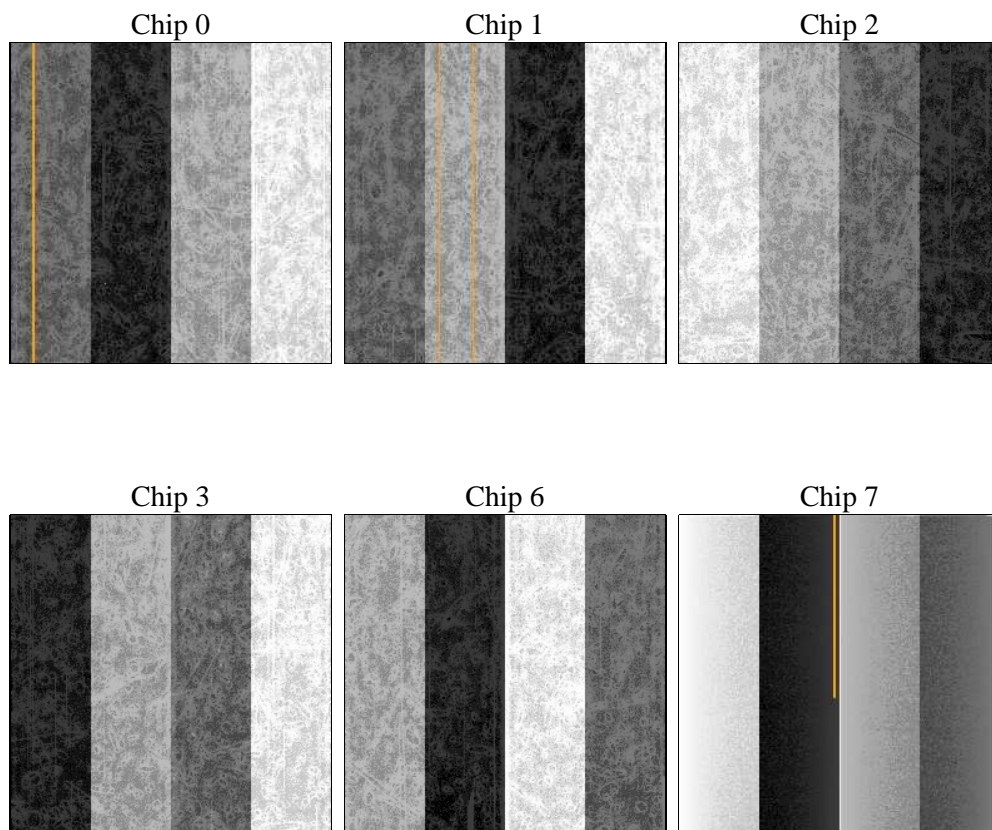
## 2 OBI

### 2.1 OBI

#### 2.1.1 Images



#### 2.1.2 Bias





### 2.1.3 Parameters

obi_num	1	Obi number	sched_exp_time	0.0	[s] Scheduled observation exposure time
ascdsver	8.4.4	Processing system revision	ontime	2792.9974501729	Sum of GTIs [s]
caldsver	4.4.9	&#160	ontime0	2792.9564101696	Sum of GTIs [s]
date	2012-05-26T07:40:41	Date and time of file creation	ontime1	2792.9153701663	Sum of GTIs [s]
revision	2	Processing version of data	ontime2	2792.874330163	Sum of GTIs [s]
			ontime3	2793.0384901762	Sum of GTIs [s]
			ontime6	2792.8332901597	Sum of GTIs [s]
			ontime7	2792.9974501729	Sum of GTIs [s]
			l1events	342570	Number of level 1 events

### 2.1.4 Events

	ccd 0	ccd 1	ccd 2	ccd 3	ccd 6	ccd 7		ccd 0	ccd 1	ccd 2	ccd 3	ccd 6	ccd 7
level 1 events	55798	54582	55631	54919	55707	65933	grade 0 events	15892	15689	16536	16141	16268	8184
rejected events	25943	24768	25248	25105	24782	23309		28%	28%	29%	29%	29%	12%
rejected %	46%	45%	45%	45%	44%	35%	grade 1 events	126	97	139	125	99	56
								0%	0%	0%	0%	0%	0%
							grade 2 events	5417	5609	5269	5157	5549	9348
								9%	10%	9%	9%	9%	14%
							grade 3 events	2027	1969	2005	2021	2058	3975
								3%	3%	3%	3%	3%	6%
							grade 4 events	2016	1830	2034	2075	1945	4064
								3%	3%	3%	3%	3%	6%
							grade 5 events	1420	1380	1276	1500	1519	3983
								2%	2%	2%	2%	2%	6%
							grade 6 events	4503	4717	4539	4420	5105	17053
								8%	8%	8%	8%	9%	25%
							grade 7 events	24397	23291	23833	23480	23164	19270
								43%	42%	42%	42%	41%	29%



## 2.2 Compared Parameters

Parameter	Planned	Actual	Parameter	Planned	Actual
Instrument	ACIS	ACIS	Obspar format version number	7	7
Detector	ACIS-012367	ACIS-012367	Obspar file type	PREDICTED	ACTUAL
Grating	NONE	NONE	Obspar update status	NONE	UPDATED
Data mode	FAINT	FAINT	Number of optional ACIS chips dropped	0	0
Observation mode	SECONDARY	SECONDARY	On-chip summing requested	N	N
[deg] Pointing RA	0	222.9431443751168	Subarray requested	NONE	NONE
[deg] Pointing Dec	0	-62.98741566546411	Alternating exposures requested	N	N
[deg] Pointing Roll	0.0	121.242120967745	[s] Primary exposure time	3.2	3.2
[mm] SIM focus pos	-1.429586	-0.6828225247311905			
[mm] SIM defocus	0.1037507710433287	0.8505141146731063			
[mm] SIM translation stage pos	250.455976	250.4635187648994			
[mm] SIM translation stage offset	0	-0.007540371344731511			
[s] Observation start time (MET)	346120756.571534	346120755.54654			
Observation start date	2008-12-20T00:39:17	2008-12-20T00:39:15			
[s] Observation end time (MET)	346131492.422065	346131491.39707			
Observation end date	2008-12-20T03:38:12	2008-12-20T03:38:11			
Read mode	TIMED	TIMED			



## 2.3 Star Slots

## 2.4 FID Slots



## A Summary

### A.1 Status

V&V Scientist	Jen Lauer
V&V Date (YYYY-MM-DD)	2012.06.01
V&V Edition	1
V&V Disposition and Status	OK
V&V Charge Time	2.7929974501729

### A.2 Comments