

V&V Reference Report

L2 ASCDS Version : 8.5.1.1

Observation 5710 - L2 Version 3
Chandra X-Ray Center

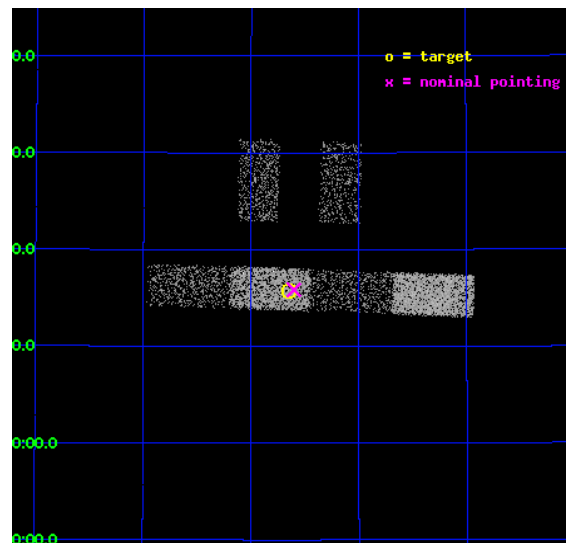
L2 Processing Date : Dec 21 2012

Contents

1	Front	2
2	OBI	3
2.1	OBI	3
2.1.1	Images	3
2.1.2	Bias	3
2.1.3	Parameters	4
2.1.4	Events	4
2.2	Compared Parameters	5
2.3	Aspect	6
2.4	Star Slots	9
2.4.1	Slot 3	9
2.4.2	Slot 4	10
2.4.3	Slot 5	11
2.4.4	Slot 6	12
2.4.5	Slot 7	13
2.5	FID Slots	14
2.5.1	Slot 0	14
2.5.2	Slot 1	15
2.5.3	Slot 2	16
A	Summary	17
A.1	Status	17
A.2	Comments	17

1 Front

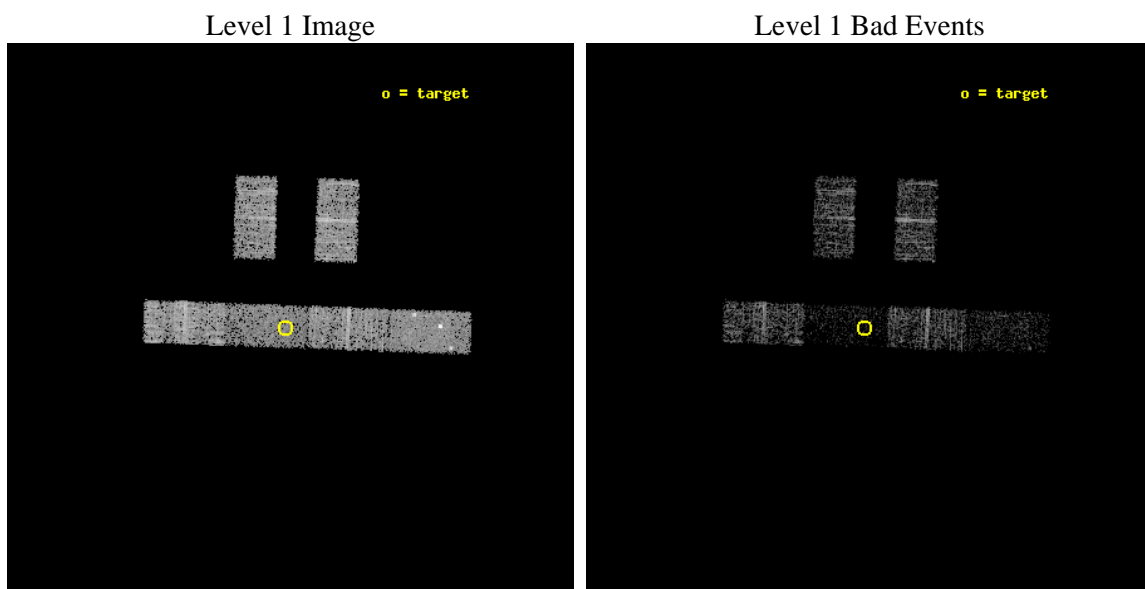
seq_num	701132	Sequence number
obs_id	5710	Observation id
title	What kind of Jets does Nature make? X-ray characterization of the FIRST Flat Spectrum Sample	Proposal title
observer	Dr. Giovanni Fossati	Principal investigator
object	FIRST J131739.2+411545	Source name
dtcycle	0	
cycle	P	events from which exps? Prim/Second/Both
ra_targ	199.413333	Observer's specified target RA [deg]
dec_targ	41.262778	Observer's specified target Dec [deg]
ra_nom	199.4004555293	Nominal RA [deg]
dec_nom	41.264061987936	Nominal Dec [deg]
roll_nom	182.04733772736	Nominal Roll [deg]
revision	3	Processing version of data
ontime	3180.6000210643	Sum of GTIs [s]
livetime	3109.6988864532	Livetime [s]
ontime2	3180.6000210643	Sum of GTIs [s]
ontime3	3180.6000210643	Sum of GTIs [s]
ontime5	3180.6000210643	Sum of GTIs [s]
ontime6	3180.6000210643	Sum of GTIs [s]
ontime7	3180.6000210643	Sum of GTIs [s]
ontime8	3180.6000210643	Sum of GTIs [s]
l2events	10199	Number of level 2 events



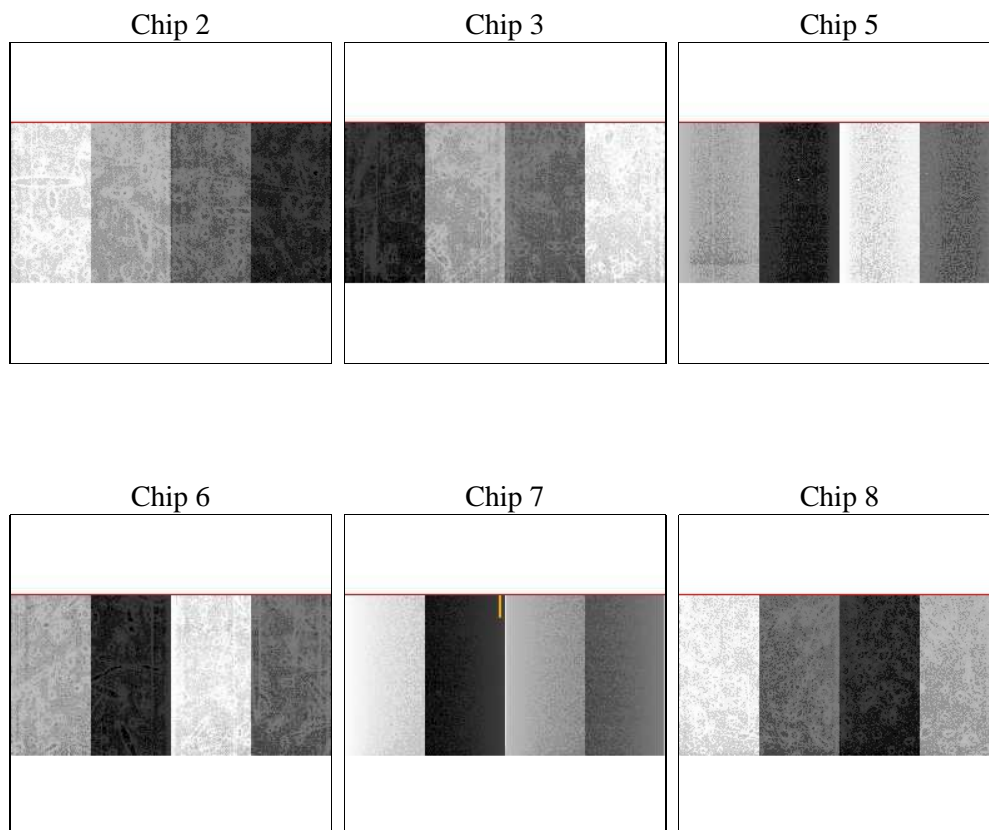
2 OBI

2.1 OBI

2.1.1 Images



2.1.2 Bias



2.1.3 Parameters

obi_num	0	Obi number	sched_exp_time	3000.000000	[s] Scheduled observation exposure time
ascdsver	8.5.1.1	Processing system revision	ontime	3180.6000210643	Sum of GTIs [s]
caldsver	4.5.5	 	ontime2	3180.6000210643	Sum of GTIs [s]
date	2012-12-22T01:40:57	Date and time of file creation	ontime3	3180.6000210643	Sum of GTIs [s]
revision	3	Processing version of data	ontime5	3180.6000210643	Sum of GTIs [s]
			ontime6	3180.6000210643	Sum of GTIs [s]
			ontime7	3180.6000210643	Sum of GTIs [s]
			ontime8	3180.6000210643	Sum of GTIs [s]
			l1events	63925	Number of level 1 events

2.1.4 Events

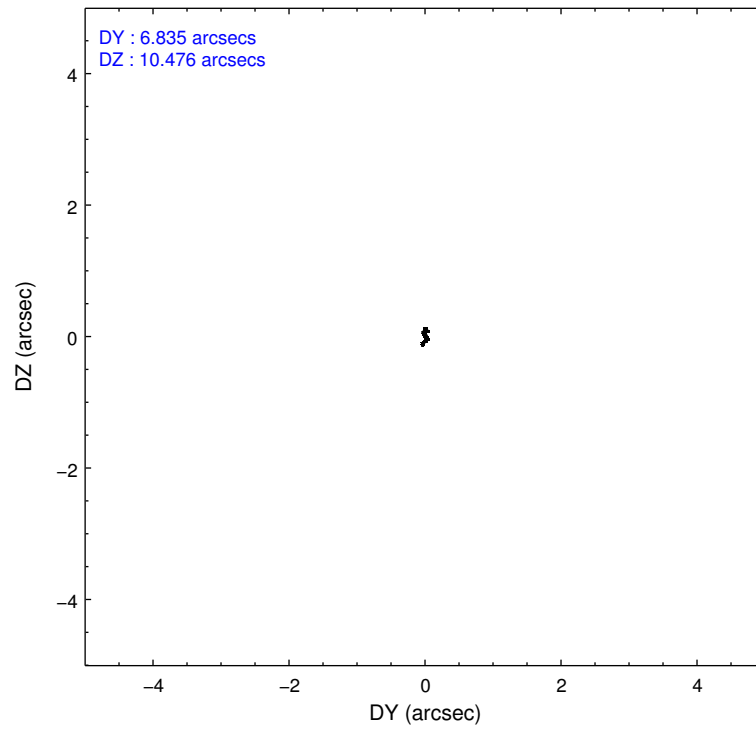
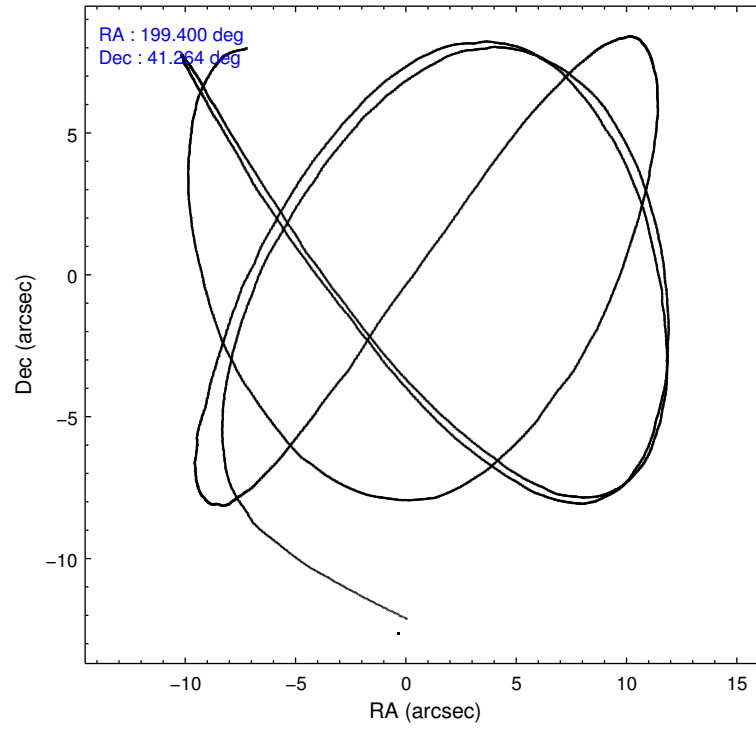
	ccd 2	ccd 3	ccd 5	ccd 6	ccd 7	ccd 8
level 1 events	12174	10454	11107	10277	6342	13571
rejected events	11372	9629	4709	9435	3022	10729
rejected %	93%	92%	42%	91%	47%	79%

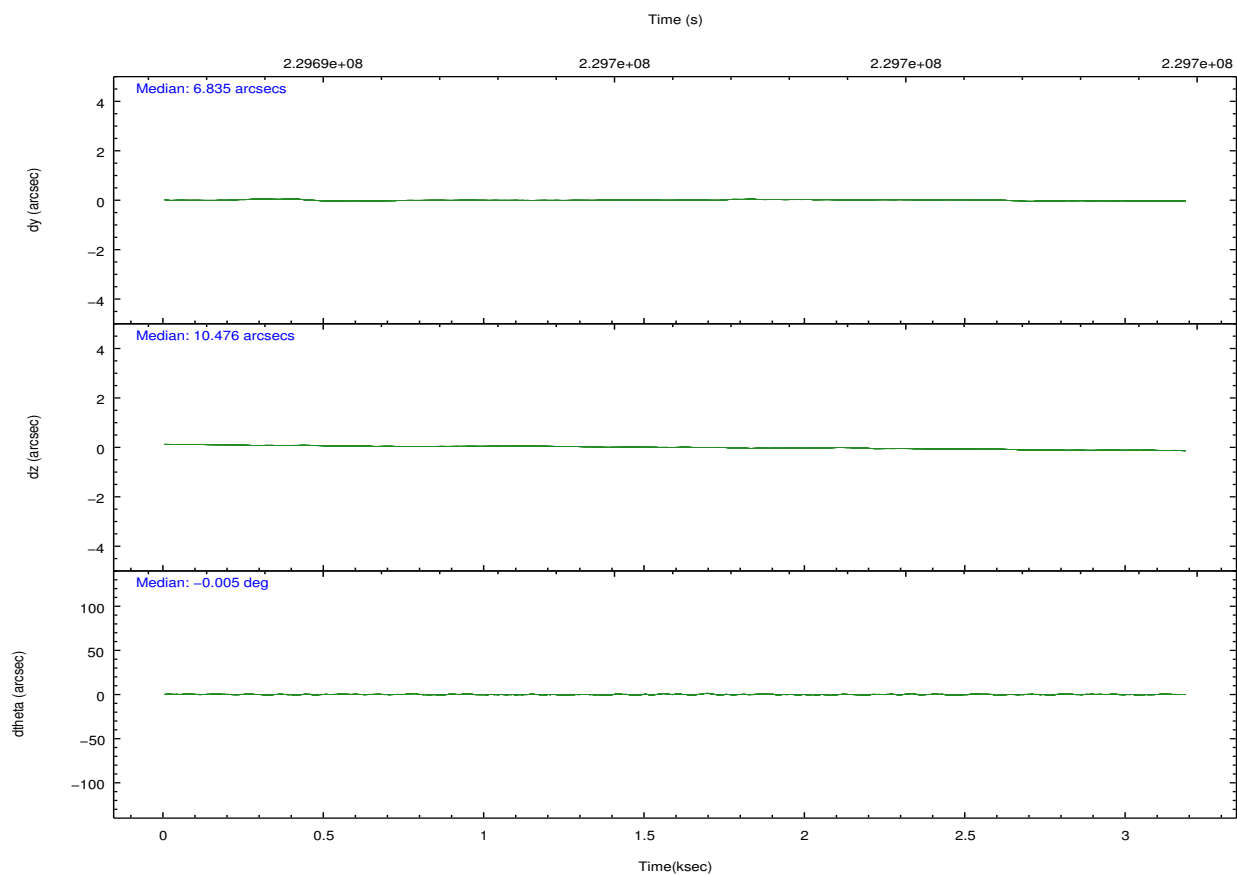
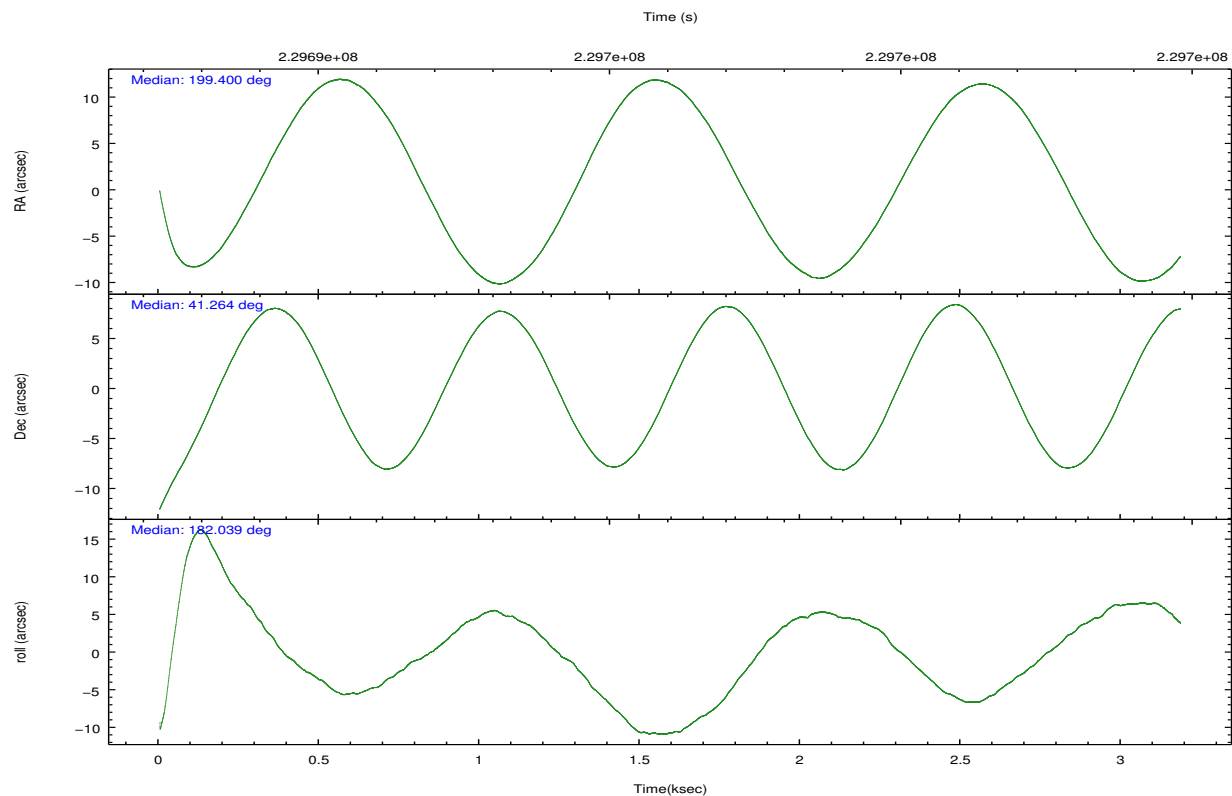
	ccd 2	ccd 3	ccd 5	ccd 6	ccd 7	ccd 8
grade 0 events	321	354	2507	368	538	859
	2%	3%	22%	3%	8%	6%
grade 1 events	1	6	8	1	8	9
	0%	0%	0%	0%	0%	0%
grade 2 events	195	187	1879	192	893	736
	1%	1%	16%	1%	14%	5%
grade 3 events	116	131	392	133	433	440
	0%	1%	3%	1%	6%	3%
grade 4 events	138	146	335	169	455	369
	1%	1%	3%	1%	7%	2%
grade 5 events	160	202	811	204	673	349
	1%	1%	7%	1%	10%	2%
grade 6 events	162	126	2291	132	1503	809
	1%	1%	20%	1%	23%	5%
grade 7 events	11081	9302	2884	9078	1839	10000
	91%	88%	25%	88%	28%	73%

2.2 Compared Parameters

Parameter	Planned	Actual	Parameter	Planned	Actual
Instrument	ACIS	ACIS	Obspar format version number	7	7
Detector	ACIS-235678	ACIS-235678	Obspar file type	PREDICTED	ACTUAL
Grating	NONE	NONE	Obspar update status	NONE	UPDATED
Data mode	FAINT	FAINT	Number of optional ACIS chips dropped	0	0
Observation mode	POINTING	POINTING	On-chip summing requested	N	N
[deg] Pointing RA	199.431043	199.4004555293049	Subarray requested	CUSTOM	1/2
[deg] Pointing Dec	41.278887	41.26406198793619	Subarray start row	257	257
[deg] Pointing Roll	181.870598	182.0473377273595	Subarray row count	512	512
[mm] SIM focus pos	-0.684267	-0.6828225247311905	Alternating exposures requested	N	N
[mm] SIM defocus	0	0.001444936568705701	[s] Primary exposure time	0.000000	1.8
[mm] SIM translation stage pos	-190.132523	-190.1400660498719			
[mm] SIM translation stage offset	0	0.00754346686406393			
[s] Observation start time (MET)	229693804.184000	229692703.79634			
Observation start date	2005-04-12T11:49:00	2005-04-12T11:31:43			
[s] Observation end time (MET)	229696804.184000	229697698.62157			
Observation end date	2005-04-12T12:39:00	2005-04-12T12:54:58			
Read mode	TIMED	TIMED			

2.3 Aspect



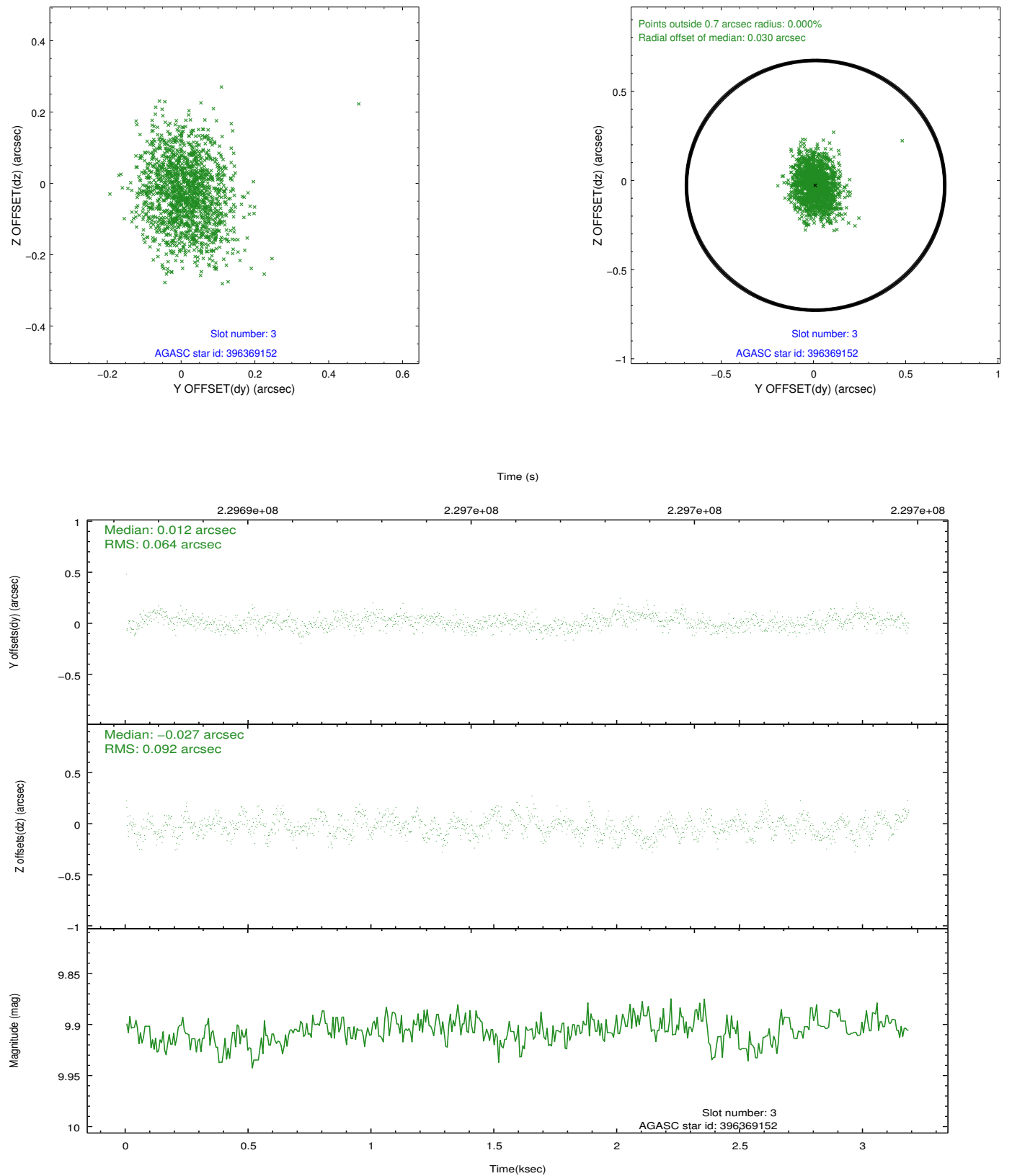


Slot Statistics

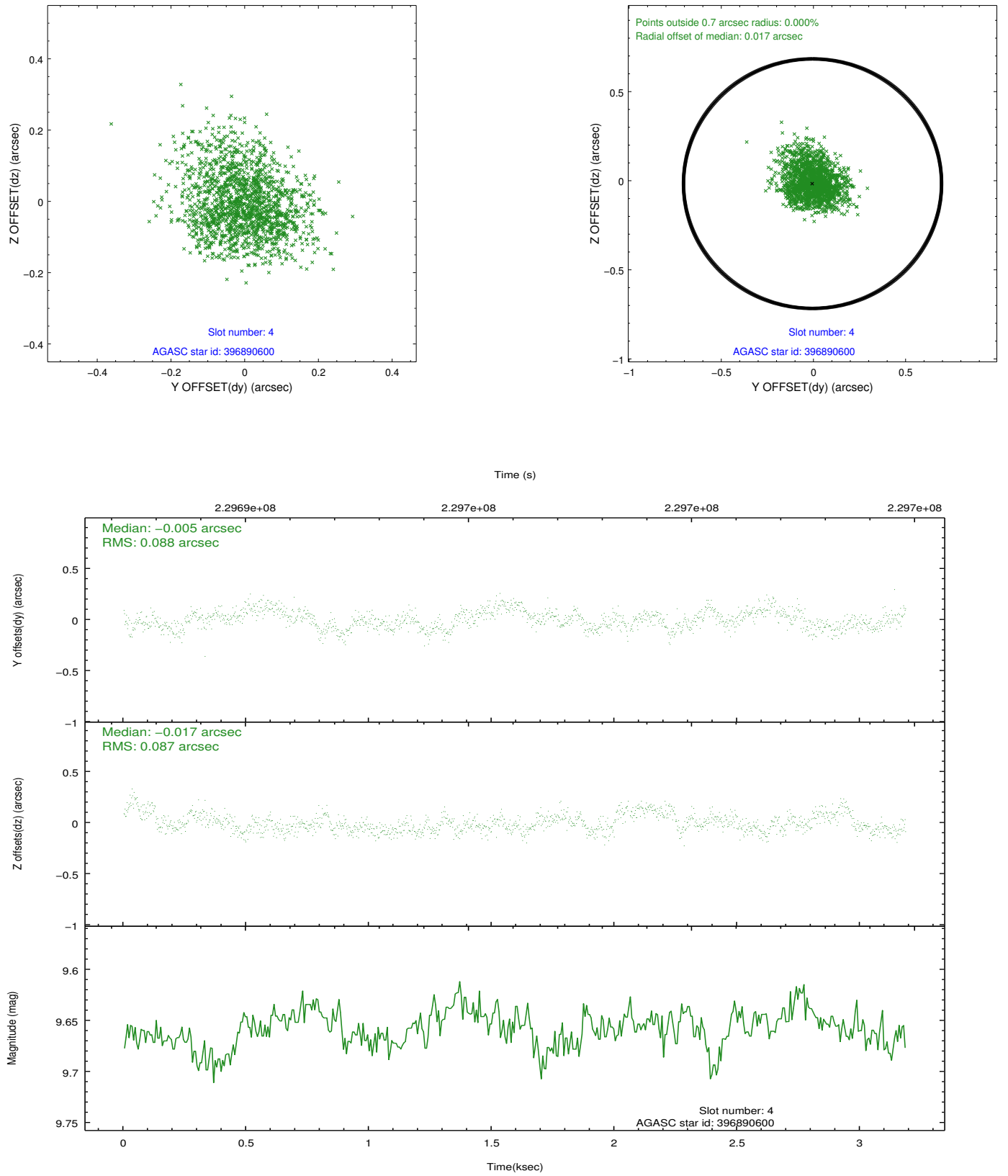
slot	status	id	mag	n_pts	med_dy	med_dz	dr1	dr2	ra	dec	mean_y	mean_z
0	FID	ACIS-S-2	7.09	777	-0.058	-0.040	0.005	0.009	0.000000	0.000000	-759.62	-1731.78
1	FID	ACIS-S-4	7.20	777	0.057	0.026	0.006	0.010	0.000000	0.000000	2152.84	174.74
2	FID	ACIS-S-6	7.35	777	-0.026	0.021	0.007	0.011	0.000000	0.000000	404.94	814.38
3	GUIDE	396369152	9.91	1550	0.012	-0.027	0.120	0.191	199.790482	41.802601	-1025.48	-1854.79
4	GUIDE	396890600	9.66	1551	-0.005	-0.017	0.131	0.213	200.243162	40.905071	-2165.81	1405.90
5	GUIDE	396892328	8.91	1554	-0.078	0.070	0.085	0.134	200.225719	41.751860	-2190.40	-1641.05
6	GUIDE	396892648	8.67	1553	-0.079	-0.008	0.090	0.141	200.297584	41.656880	-2375.78	-1296.67
7	GUIDE	396372232	9.92	1551	0.146	-0.024	0.174	0.272	198.497284	41.878058	2429.59	-2251.36

2.4 Star Slots

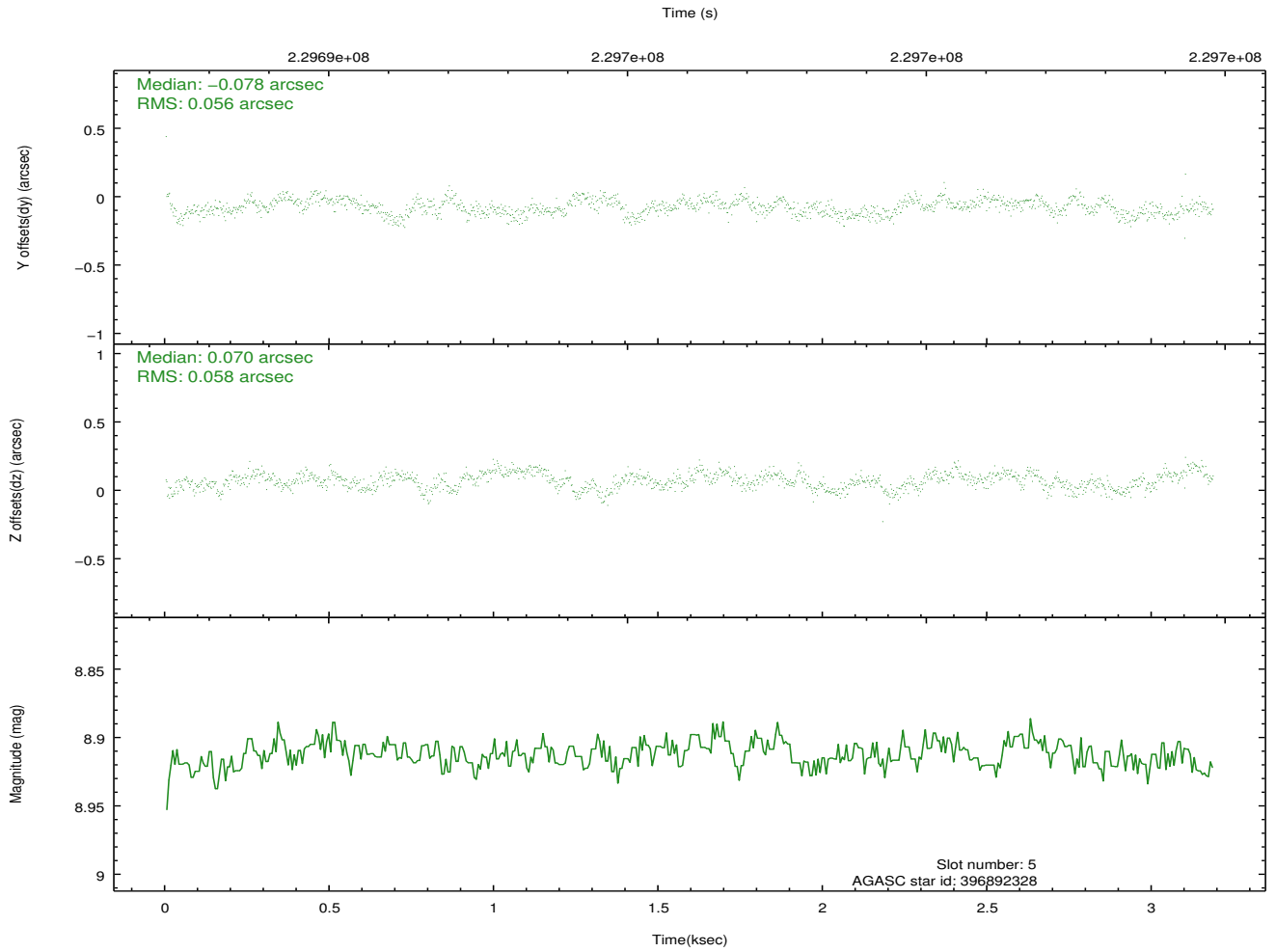
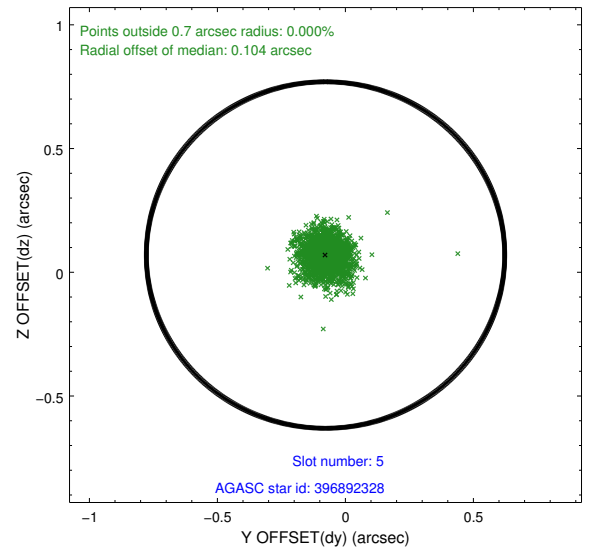
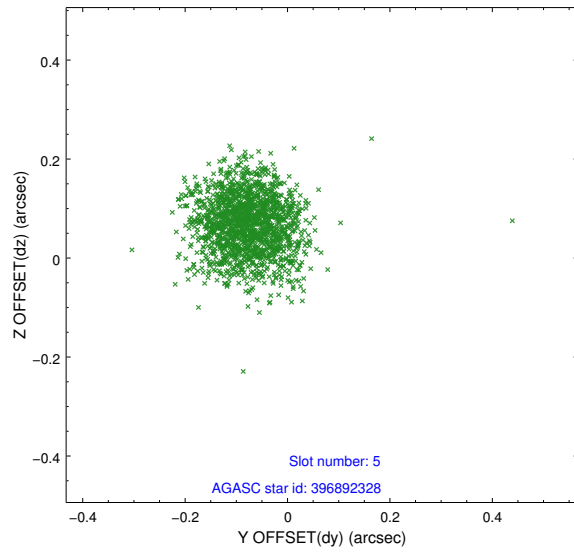
2.4.1 Slot 3



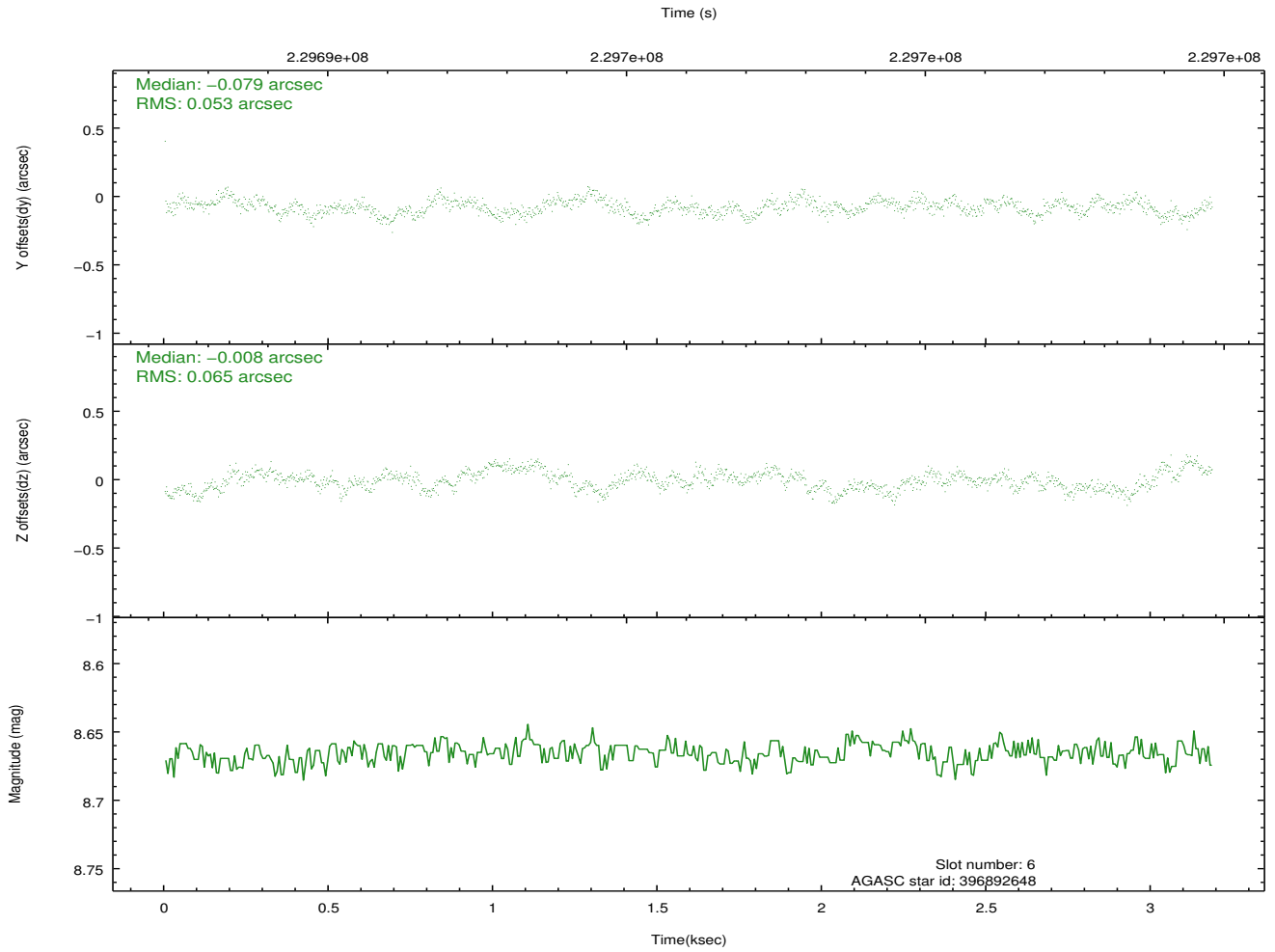
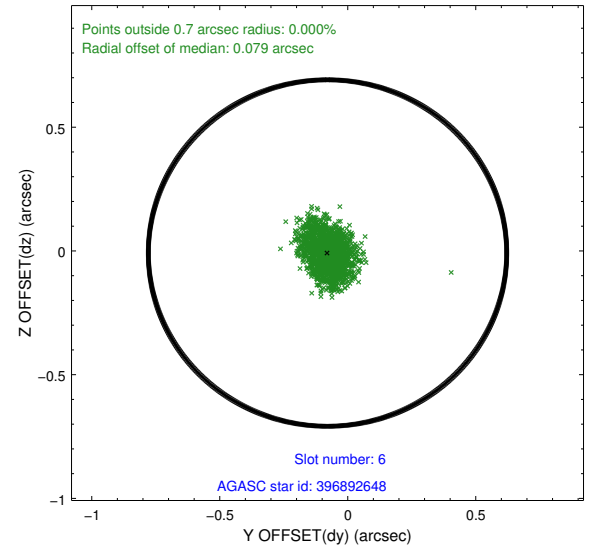
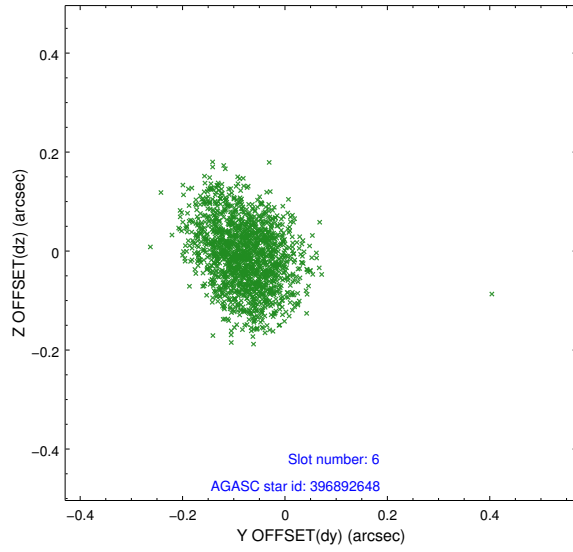
2.4.2 Slot 4



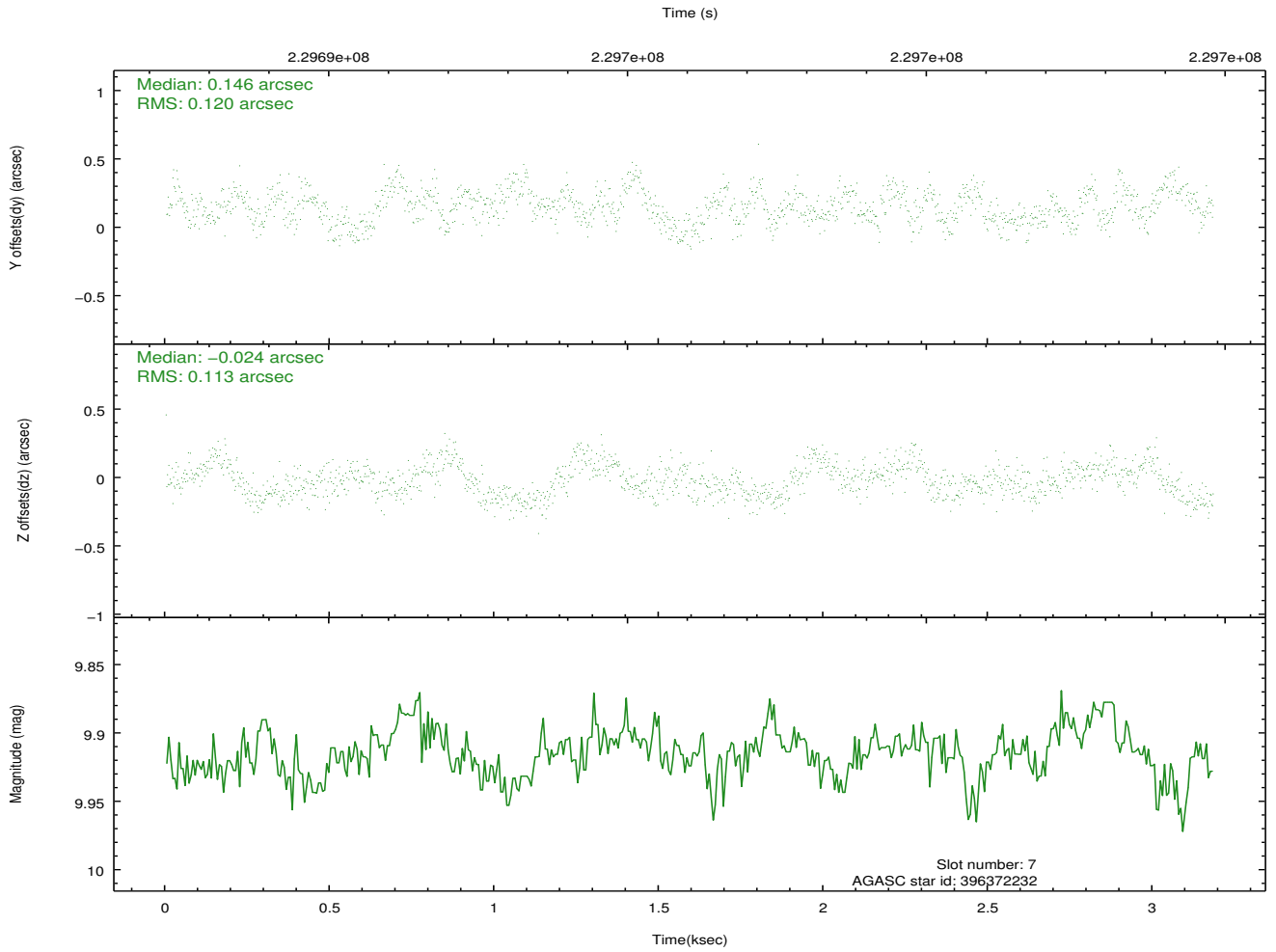
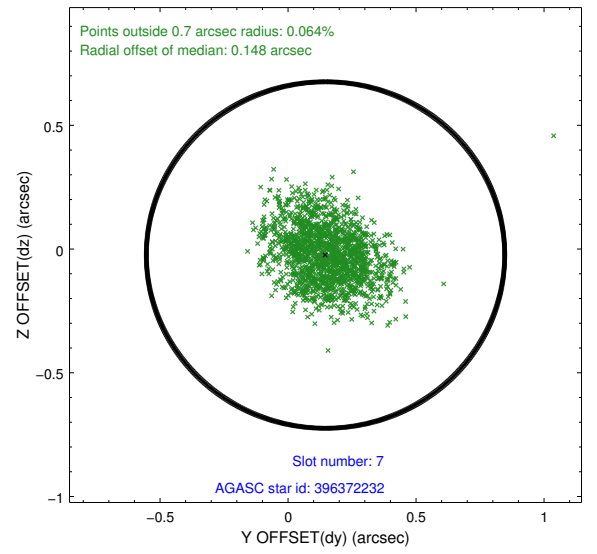
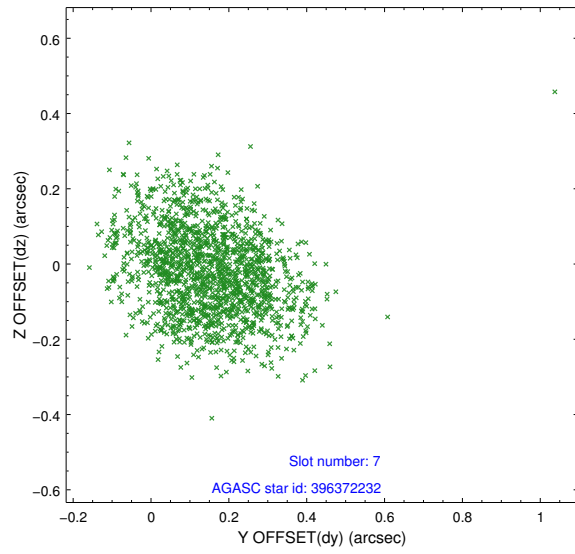
2.4.3 Slot 5



2.4.4 Slot 6

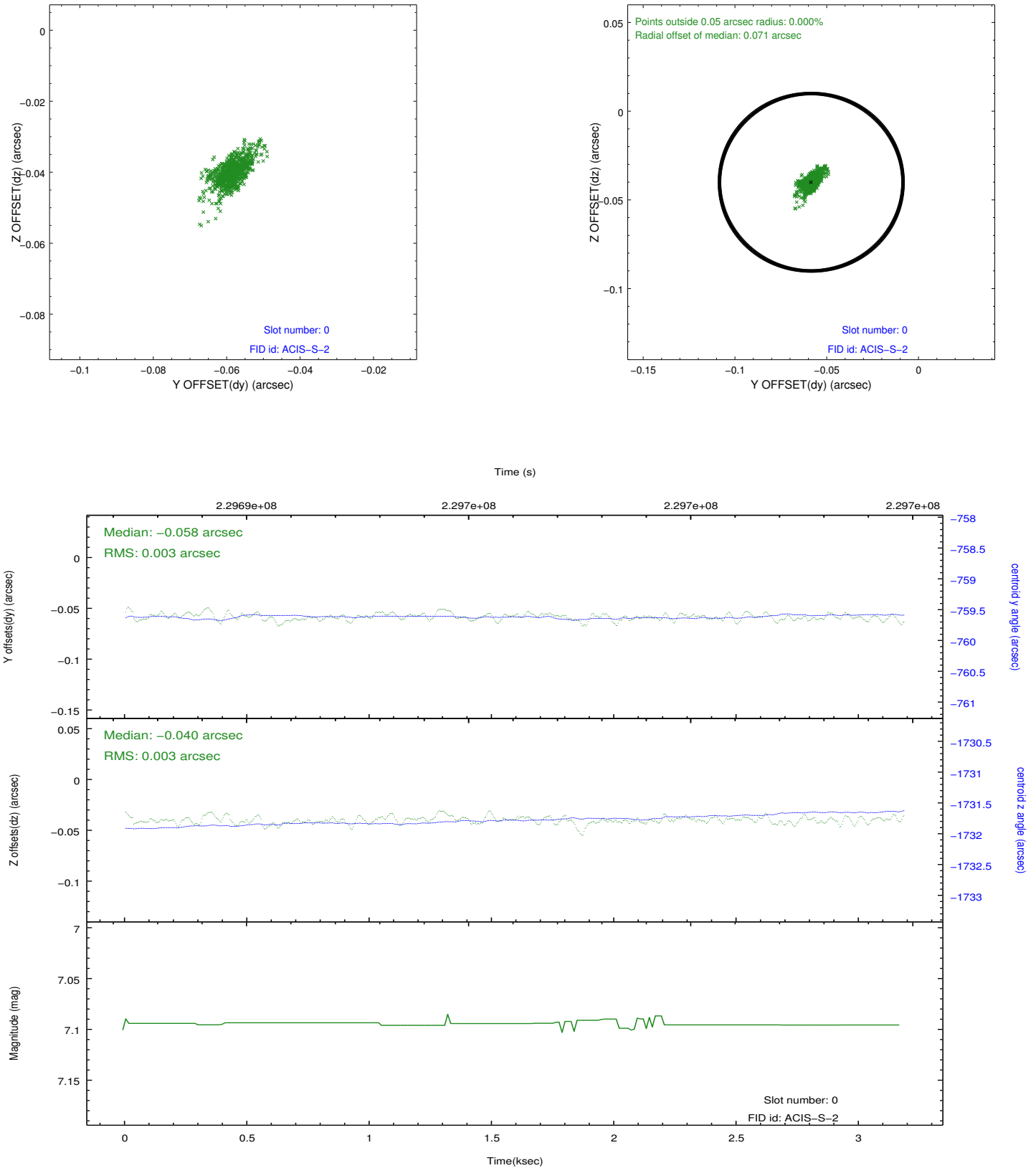


2.4.5 Slot 7

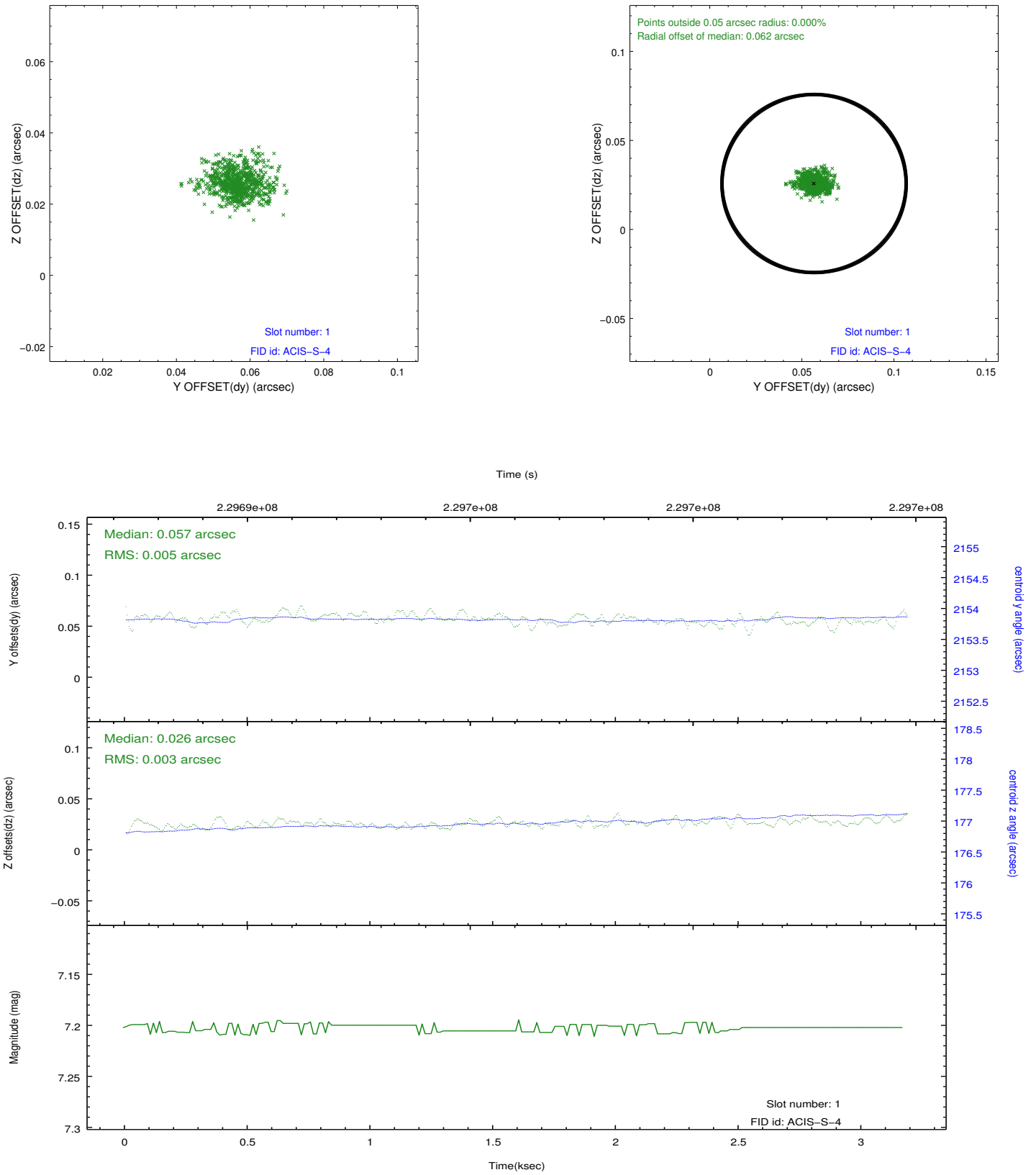


2.5 FID Slots

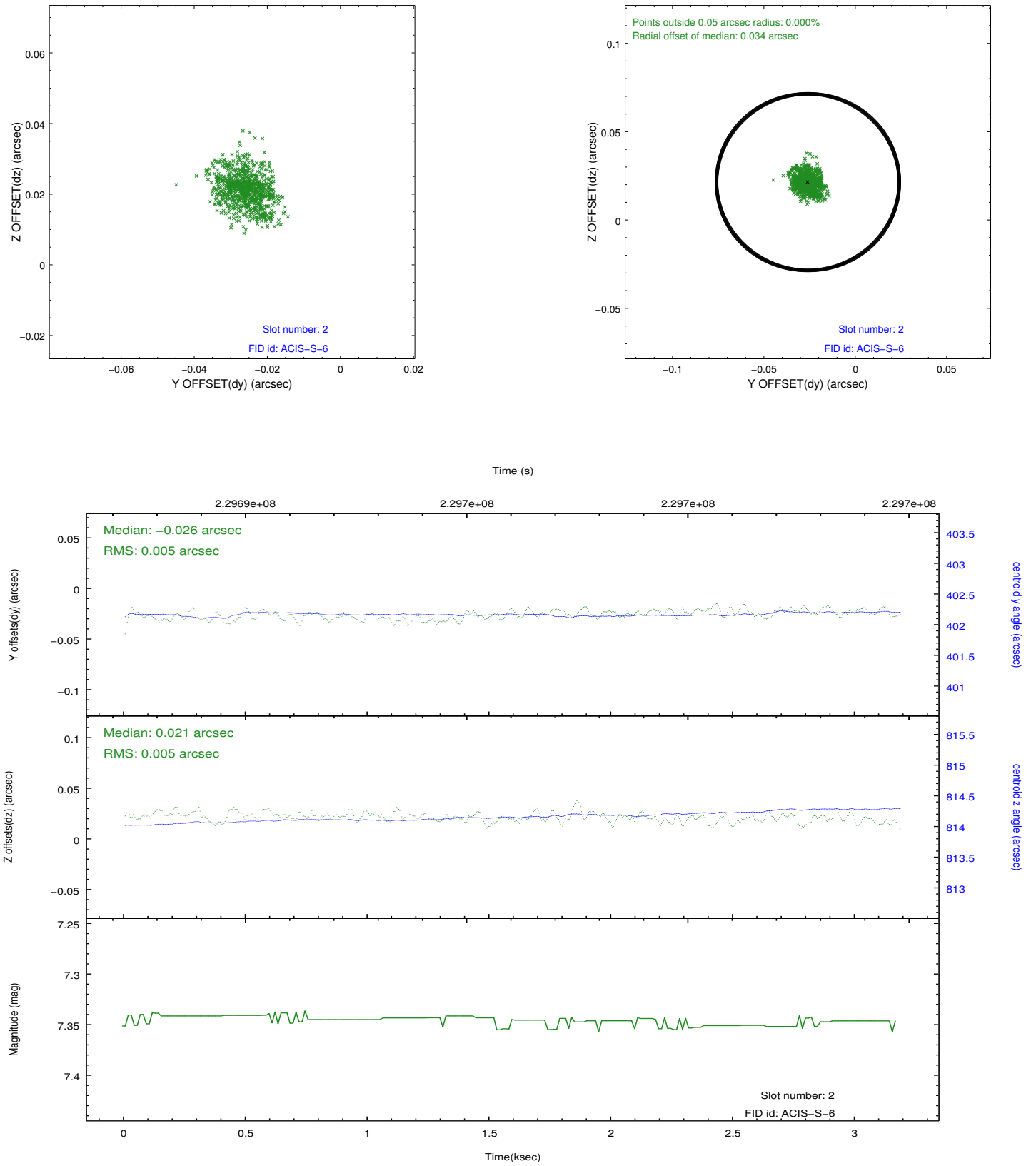
2.5.1 Slot 0



2.5.2 Slot 1



2.5.3 Slot 2



A Summary

A.1 Status

V&V Scientist	Jen Lauer
V&V Date (YYYY-MM-DD)	2013.01.15
V&V Edition	1
V&V Disposition and Status	OK
V&V Charge Time	3.1806

A.2 Comments