

# V&V Reference Report

## L2 ASCDS Version : 8.4.5

Observation 56560 - L2 Version 2  
Chandra X-Ray Center

L2 Processing Date : Jun 18 2012

## Contents

<b>1</b>	<b>Front</b>	<b>2</b>
<b>2</b>	<b>OBI</b>	<b>3</b>
2.1	OBI . . . . .	3
2.1.1	Images . . . . .	3
2.1.2	Bias . . . . .	3
2.1.3	Parameters . . . . .	4
2.1.4	Events . . . . .	4
2.2	Compared Parameters . . . . .	5
2.3	Star Slots . . . . .	6
2.4	FID Slots . . . . .	6
<b>A</b>	<b>Summary</b>	<b>7</b>
A.1	Status . . . . .	7
A.2	Comments . . . . .	7

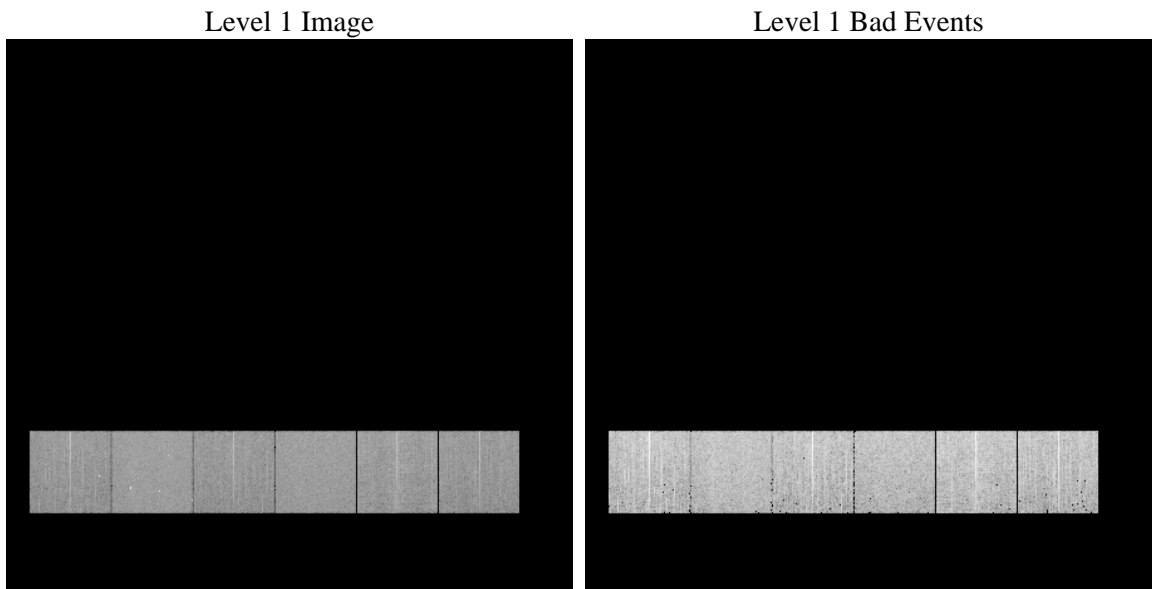
# 1 Front

seq_num	&#160	Sequence number
obs_id	56560	Observation id
title	ACIS-456789 diagnostics	Proposal title
observer	CHANDRA engineering request/realtime commanding	Principal investig
object	&#160	Source name
dtcycle	0	&#160
cycle	P	events from which exps? Prim/Second/Both
ra_targ	0.0	Observer's specified target RA [deg]
dec_targ	0.0	Observer's specified target Dec [deg]
ra_nom	312.02854971448	Nominal RA [deg]
dec_nom	9.9937909473343	Nominal Dec [deg]
roll_nom	314.48648906057	Nominal Roll [deg]
revision	2	Processing version of data
ontime	4517.7437289357	Sum of GTIs [s]
livetime	4460.5373375812	Livetime [s]
ontime4	4517.6206089258	Sum of GTIs [s]
ontime5	4517.7026889324	Sum of GTIs [s]
ontime6	4517.6616489291	Sum of GTIs [s]
ontime7	4517.7437289357	Sum of GTIs [s]
ontime8	4517.5795689225	Sum of GTIs [s]
ontime9	4517.784768939	Sum of GTIs [s]
l2events	269735	Number of level 2 events

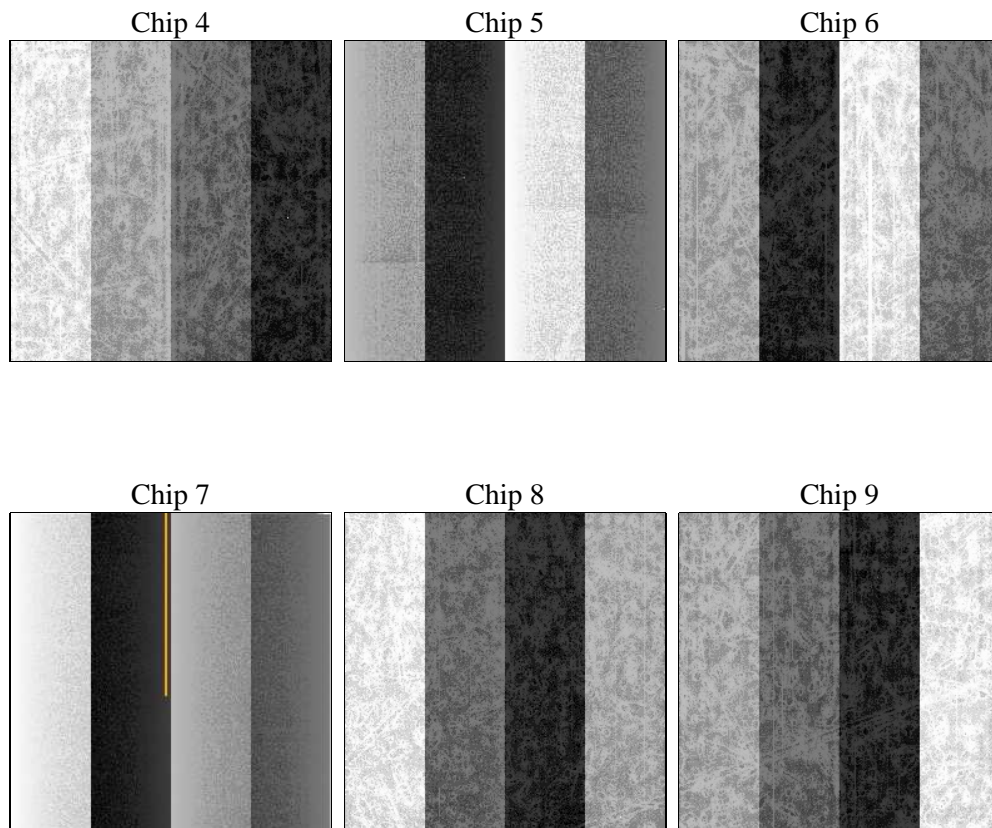
## 2 OBI

### 2.1 OBI

#### 2.1.1 Images



#### 2.1.2 Bias



### 2.1.3 Parameters

obi_num	0	Obi number	sched_exp_time	0.0	[s] Scheduled observation exposure time
ascdsver	8.4.5	Processing system revision	ontime	4517.7437289357	Sum of GTIs [s]
caldsver	4.4.10	&#160	ontime4	4517.6206089258	Sum of GTIs [s]
date	2012-06-18T21:23:29	Date and time of file creation	ontime5	4517.7026889324	Sum of GTIs [s]
revision	2	Processing version of data	ontime6	4517.6616489291	Sum of GTIs [s]
			ontime7	4517.7437289357	Sum of GTIs [s]
			ontime8	4517.5795689225	Sum of GTIs [s]
			ontime9	4517.784768939	Sum of GTIs [s]
			l1events	564659	Number of level 1 events

### 2.1.4 Events

	ccd 4	ccd 5	ccd 6	ccd 7	ccd 8	ccd 9		ccd 4	ccd 5	ccd 6	ccd 7	ccd 8	ccd 9
level 1 events	86854	106452	85564	100946	99533	85310	grade 0 events	22427	9318	21274	11195	23767	21242
rejected events	47256	42868	44418	39694	49969	45072		25%	8%	24%	11%	23%	24%
rejected %	54%	40%	51%	39%	50%	52%	grade 1 events	241	265	143	104	184	170
								0%	0%	0%	0%	0%	0%
							grade 2 events	6326	22887	7446	13377	9338	7018
								7%	21%	8%	13%	9%	8%
							grade 3 events	2818	2705	2684	5603	3748	2634
								3%	2%	3%	5%	3%	3%
							grade 4 events	2724	2667	2637	5545	3589	2690
								3%	2%	3%	5%	3%	3%
							grade 5 events	2384	5750	2623	6289	3350	2799
								2%	5%	3%	6%	3%	3%
							grade 6 events	5303	26007	7105	25532	9122	6654
								6%	24%	8%	25%	9%	7%
							grade 7 events	44631	36853	41652	33301	46435	42103
								51%	34%	48%	32%	46%	49%

## 2.2 Compared Parameters

Parameter	Planned	Actual	Parameter	Planned	Actual
Instrument	ACIS	ACIS	Obspar format version number	7	7
Detector	ACIS-456789	ACIS-456789	Obspar file type	PREDICTED	ACTUAL
Grating	NONE	NONE	Obspar update status	NONE	UPDATED
Data mode	FAINT	FAINT	Number of optional ACIS chips dropped	0	0
Observation mode	SECONDARY	SECONDARY	On-chip summing requested	N	N
[deg] Pointing RA	0	312.0285497144781	Subarray requested	NONE	NONE
[deg] Pointing Dec	0	9.993790947334269	Alternating exposures requested	N	N
[deg] Pointing Roll	0.0	314.4864890605746	[s] Primary exposure time	3.2	3.2
[mm] SIM focus pos	-1.429586	-0.7809083437167272			
[mm] SIM defocus	0.1037507710433287	0.7524282956875696			
[mm] SIM translation stage pos	250.455976	250.466033080201			
[mm] SIM translation stage offset	0	-0.01005468664627074			
[s] Observation start time (MET)	378337705.381329	378337704.35632			
Observation start date	2009-12-27T21:48:25	2009-12-27T21:48:24			
[s] Observation end time (MET)	378343867.68164	378343866.65664			
Observation end date	2009-12-27T23:31:08	2009-12-27T23:31:06			
Read mode	TIMED	TIMED			

## **2.3 Star Slots**

## **2.4 FID Slots**

## A Summary

### A.1 Status

V&V Scientist	Beth Sundheim
V&V Date (YYYY-MM-DD)	2012.06.25
V&V Edition	1
V&V Disposition and Status	OK
V&V Charge Time	4.5177437289357

### A.2 Comments