

V&V Reference Report

L2 ASCDS Version : 8.4.5

Observation 56450 - L2 Version 2
Chandra X-Ray Center

L2 Processing Date : Jun 21 2012

Contents

| | | |
|----------|-------------------------------|----------|
| 1 | Front | 2 |
| 2 | OBI | 3 |
| 2.1 | OBI | 3 |
| 2.1.1 | Images | 3 |
| 2.1.2 | Bias | 3 |
| 2.1.3 | Parameters | 4 |
| 2.1.4 | Events | 4 |
| 2.2 | Compared Parameters | 5 |
| 2.3 | Star Slots | 6 |
| 2.4 | FID Slots | 6 |
| A | Summary | 7 |
| A.1 | Status | 7 |
| A.2 | Comments | 7 |

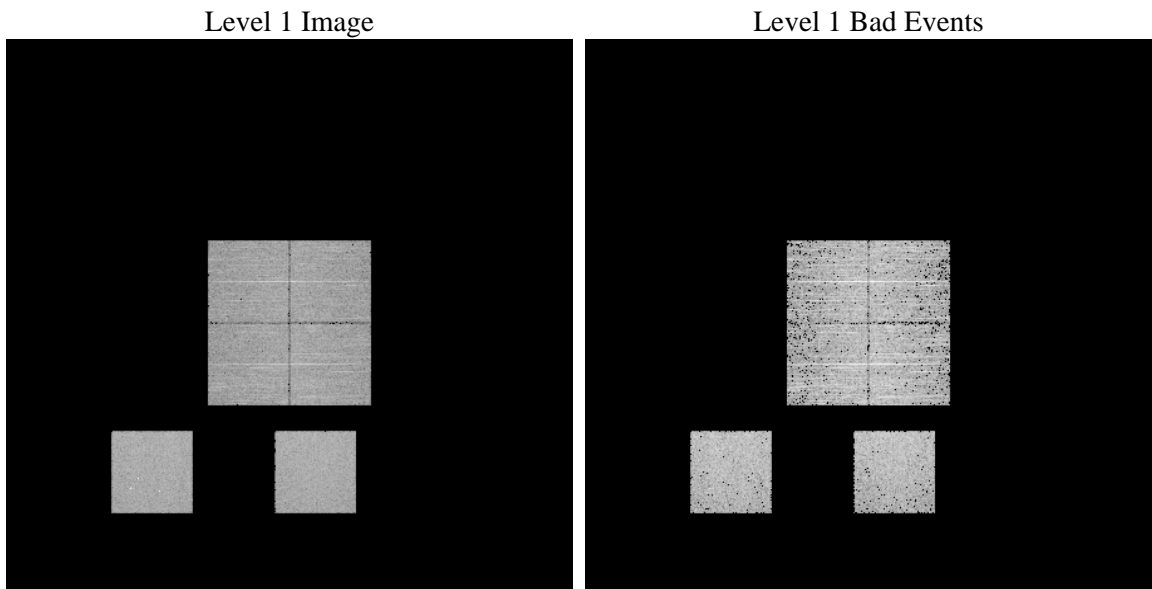
1 Front

| | | |
|----------|---|---|
| seq_num | | Sequence number |
| obs_id | 56450 | Observation id |
| title | ACIS-012357 diagnostics | Proposal title |
| observer | CHANDRA engineering request/realtime commanding | Principal investig |
| object | | Source name |
| dtcycle | 0 | |
| cycle | P | events from which exps? Prim/Second/Both |
| ra_targ | 0.0 | Observer's specified target RA [deg] |
| dec_targ | 0.0 | Observer's specified target Dec [deg] |
| ra_nom | 148.97447051617 | Nominal RA [deg] |
| dec_nom | 37.479381330067 | Nominal Dec [deg] |
| roll_nom | 175.87885005461 | Nominal Roll [deg] |
| revision | 2 | Processing version of data |
| ontime | 2887.2941083908 | Sum of GTIs [s] |
| livetime | 2850.7334518706 | Livetime [s] |
| ontime0 | 2887.3351483941 | Sum of GTIs [s] |
| ontime1 | 2887.3761883974 | Sum of GTIs [s] |
| ontime2 | 2889.599989295 | Sum of GTIs [s] |
| ontime3 | 2887.2530683875 | Sum of GTIs [s] |
| ontime5 | 2889.599989295 | Sum of GTIs [s] |
| ontime7 | 2887.2941083908 | Sum of GTIs [s] |
| l2events | 158274 | Number of level 2 events |

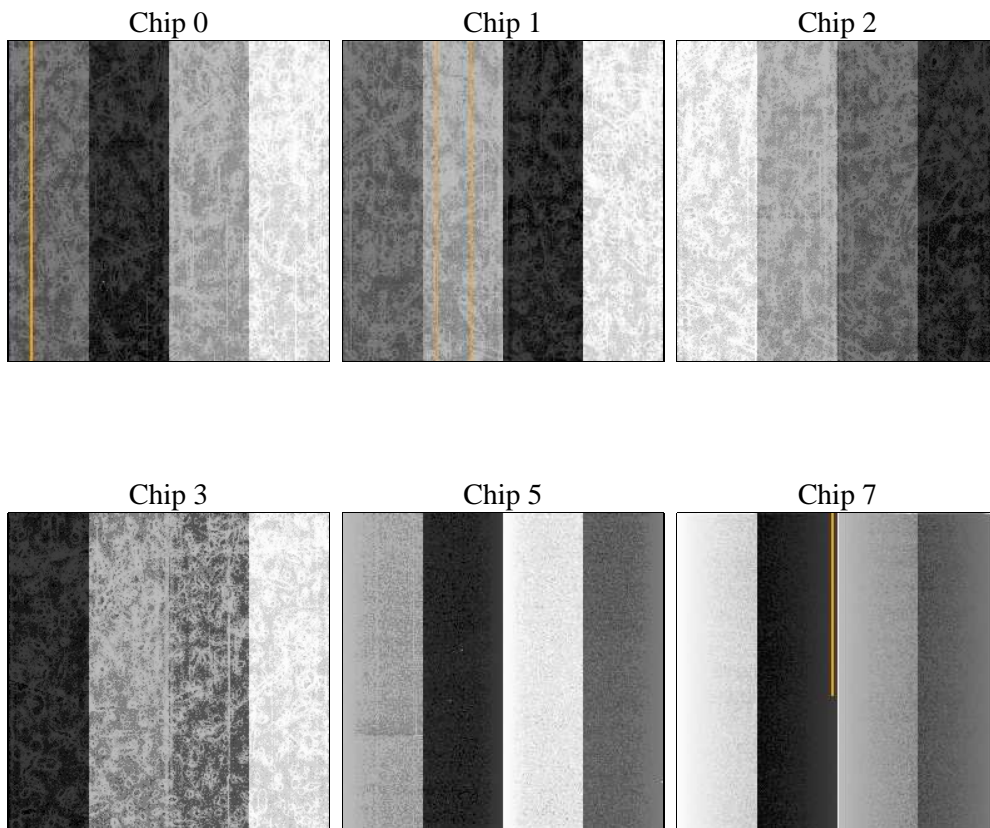
2 OBI

2.1 OBI

2.1.1 Images



2.1.2 Bias



2.1.3 Parameters

| | | | | | |
|----------|---------------------|--------------------------------|----------------|-----------------|---|
| obi_num | 0 | Obi number | sched_exp_time | 0.0 | [s] Scheduled observation exposure time |
| ascdsver | 8.4.5 | Processing system revision | ontime | 2887.2941083908 | Sum of GTIs [s] |
| caldsver | 4.4.10 | | ontime0 | 2887.3351483941 | Sum of GTIs [s] |
| date | 2012-06-21T14:49:01 | Date and time of file creation | ontime1 | 2887.3761883974 | Sum of GTIs [s] |
| revision | 2 | Processing version of data | ontime2 | 2889.599989295 | Sum of GTIs [s] |
| | | | ontime3 | 2887.2530683875 | Sum of GTIs [s] |
| | | | ontime5 | 2889.599989295 | Sum of GTIs [s] |
| | | | ontime7 | 2887.2941083908 | Sum of GTIs [s] |
| | | | l1events | 311016 | Number of level 1 events |

2.1.4 Events

| | ccd 0 | ccd 1 | ccd 2 | ccd 3 | ccd 5 | ccd 7 | | ccd 0 | ccd 1 | ccd 2 | ccd 3 | ccd 5 | ccd 7 |
|-----------------|-------|-------|-------|-------|-------|-------|----------------|-------|-------|-------|-------|-------|-------|
| level 1 events | 46492 | 46609 | 46932 | 50239 | 60977 | 59767 | grade 0 events | 12296 | 12207 | 12538 | 13079 | 4963 | 6346 |
| rejected events | 23185 | 22983 | 23799 | 26272 | 24351 | 23681 | | 26% | 26% | 26% | 26% | 8% | 10% |
| rejected % | 49% | 49% | 50% | 52% | 39% | 39% | grade 1 events | 101 | 80 | 96 | 116 | 77 | 58 |
| | | | | | | | | 0% | 0% | 0% | 0% | 0% | 0% |
| | | | | | | | grade 2 events | 4298 | 4515 | 3947 | 4174 | 13213 | 7796 |
| | | | | | | | | 9% | 9% | 8% | 8% | 21% | 13% |
| | | | | | | | grade 3 events | 1568 | 1600 | 1585 | 1638 | 1582 | 3334 |
| | | | | | | | | 3% | 3% | 3% | 3% | 2% | 5% |
| | | | | | | | grade 4 events | 1564 | 1573 | 1589 | 1603 | 1542 | 3241 |
| | | | | | | | | 3% | 3% | 3% | 3% | 2% | 5% |
| | | | | | | | grade 5 events | 1450 | 1409 | 1310 | 1524 | 3231 | 3765 |
| | | | | | | | | 3% | 3% | 2% | 3% | 5% | 6% |
| | | | | | | | grade 6 events | 3581 | 3731 | 3474 | 3473 | 15326 | 15369 |
| | | | | | | | | 7% | 8% | 7% | 6% | 25% | 25% |
| | | | | | | | grade 7 events | 21634 | 21494 | 22393 | 24632 | 21043 | 19858 |
| | | | | | | | | 46% | 46% | 47% | 49% | 34% | 33% |

2.2 Compared Parameters

| Parameter | Planned | Actual | Parameter | Planned | Actual |
|-----------------------------------|---------------------|----------------------|---------------------------------------|-----------|---------|
| Instrument | ACIS | ACIS | Obspar format version number | 7 | 7 |
| Detector | ACIS-012357 | ACIS-012357 | Obspar file type | PREDICTED | ACTUAL |
| Grating | NONE | NONE | Obspar update status | NONE | UPDATED |
| Data mode | FAINT | FAINT | Number of optional ACIS chips dropped | 0 | 0 |
| Observation mode | SECONDARY | SECONDARY | On-chip summing requested | N | N |
| [deg] Pointing RA | 0 | 148.9744705161671 | Subarray requested | NONE | NONE |
| [deg] Pointing Dec | 0 | 37.47938133006749 | Alternating exposures requested | N | N |
| [deg] Pointing Roll | 0.0 | 175.8788500546063 | [s] Primary exposure time | 3.2 | 3.2 |
| [mm] SIM focus pos | -1.429586 | -0.6828225247311905 | | | |
| [mm] SIM defocus | 0.1037507710433287 | 0.8505141146731063 | | | |
| [mm] SIM translation stage pos | 250.455976 | 250.466033080201 | | | |
| [mm] SIM translation stage offset | 0 | -0.01005468664627074 | | | |
| [s] Observation start time (MET) | 382484435.34122 | 382484434.31623 | | | |
| Observation start date | 2010-02-13T21:40:35 | 2010-02-13T21:40:34 | | | |
| [s] Observation end time (MET) | 382491489.391577 | 382491488.36658 | | | |
| Observation end date | 2010-02-13T23:38:09 | 2010-02-13T23:38:08 | | | |
| Read mode | TIMED | TIMED | | | |

2.3 Star Slots

2.4 FID Slots

A Summary

A.1 Status

| | |
|----------------------------|-----------------|
| V&V Scientist | Jen Lauer |
| V&V Date (YYYY-MM-DD) | 2012.06.27 |
| V&V Edition | 1 |
| V&V Disposition and Status | OK |
| V&V Charge Time | 2.8872941083908 |

A.2 Comments