

V&V Reference Report

L2 ASCDS Version : 8.5.1.1

Observation 5640 - L2 Version 3
Chandra X-Ray Center

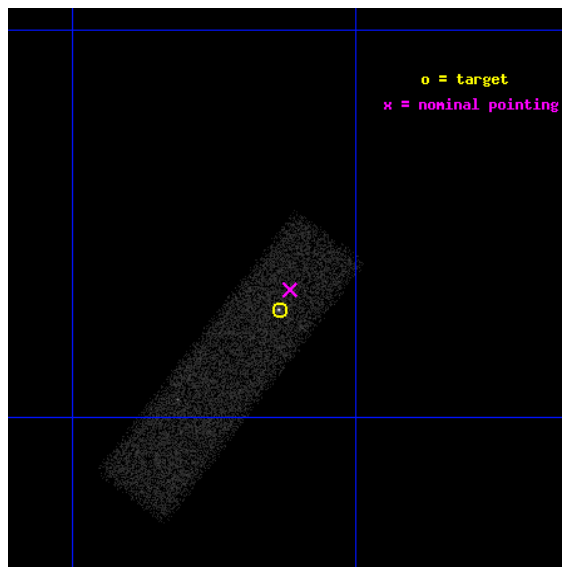
L2 Processing Date : Dec 27 2012

Contents

1	Front	2
2	OBI	3
2.1	OBI	3
2.1.1	Images	3
2.1.2	Bias	3
2.1.3	Parameters	4
2.1.4	Events	4
2.2	Compared Parameters	5
2.3	Aspect	6
2.4	Star Slots	9
2.4.1	Slot 3	9
2.4.2	Slot 4	10
2.4.3	Slot 5	11
2.4.4	Slot 6	12
2.4.5	Slot 7	13
2.5	FID Slots	14
2.5.1	Slot 0	14
2.5.2	Slot 1	15
2.5.3	Slot 2	16
A	Summary	17
A.1	Status	17
A.2	Comments	17

1 Front

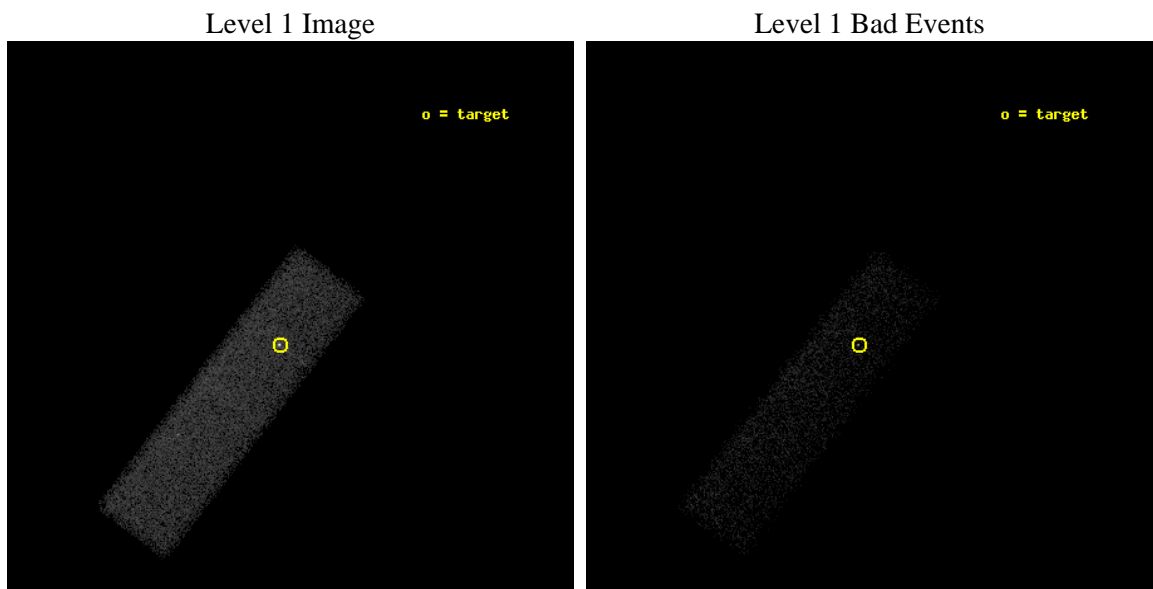
seq_num	701063	Sequence number
obs_id	5640	Observation id
title	The Extended X-ray Structure of a New Population of Blazars	Propos
observer	Dr. Hermine Landt	Principal investigator
object	WGAJ2347+0852	Source name
dtcycle	0	
cycle	P	events from which exps? Prim/Second/Both
ra_targ	356.90875	Observer's specified target RA [deg]
dec_targ	8.879556	Observer's specified target Dec [deg]
ra_nom	356.90418818229	Nominal RA [deg]
dec_nom	8.888131180357	Nominal Dec [deg]
roll_nom	127.58694143751	Nominal Roll [deg]
revision	3	Processing version of data
ontime	15181.600226223	Sum of GTIs [s]
livetime	14440.787811494	Livetime [s]
ontime7	15181.600226223	Sum of GTIs [s]
l2events	22788	Number of level 2 events



2 OBI

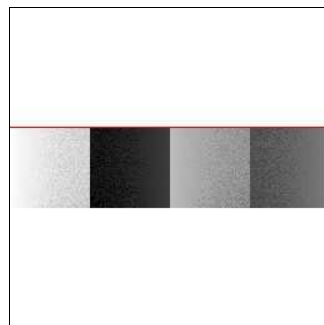
2.1 OBI

2.1.1 Images



2.1.2 Bias

Chip 7



2.1.3 Parameters

obi_num	0	Obi number	sched_exp_time	15000.000000	[s] Scheduled observation exposure time
ascdsver	8.5.1.1	Processing system revision	ontime	15181.600226223	Sum of GTIs [s]
caldsver	4.5.5	 	ontime7	15181.600226223	Sum of GTIs [s]
date	2012-12-27T21:56:18	Date and time of file creation	l1events	49839	Number of level 1 events
revision	3	Processing version of data			

2.1.4 Events

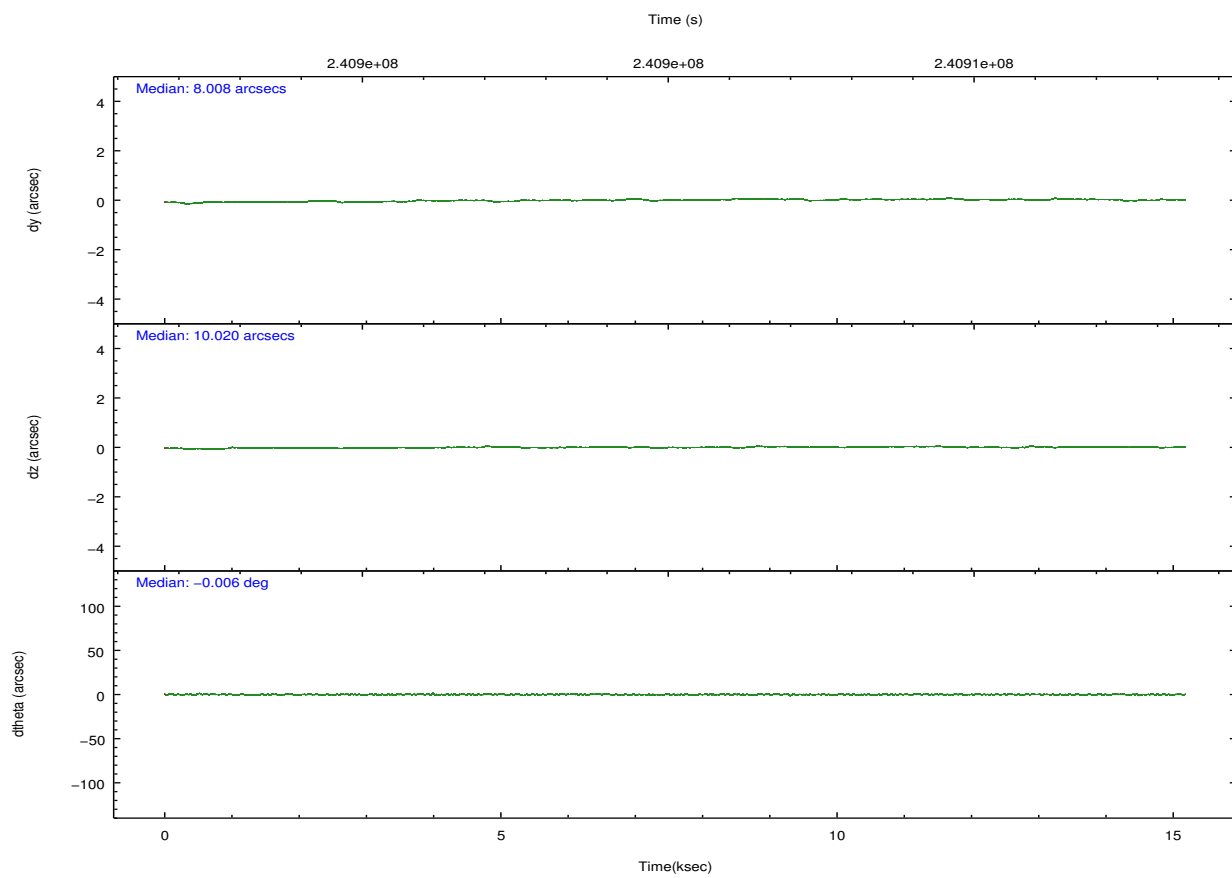
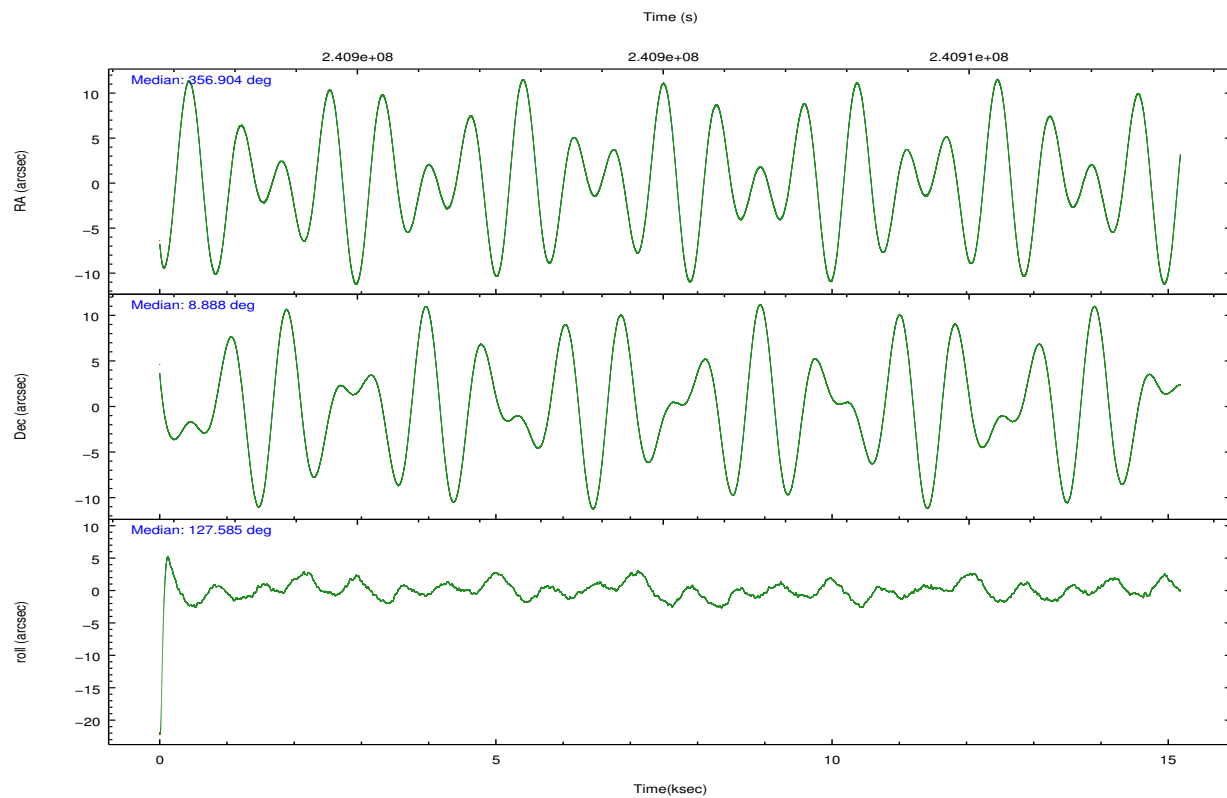
	ccd 7
level 1 events	49839
rejected events	26483
rejected %	53%

	ccd 7
grade 0 events	3608
	7%
grade 1 events	78
	0%
grade 2 events	5256
	10%
grade 3 events	2891
	5%
grade 4 events	2688
	5%
grade 5 events	4408
	8%
grade 6 events	10684
	21%
grade 7 events	20226
	40%

2.2 Compared Parameters

Parameter	Planned	Actual	Parameter	Planned	Actual
Instrument	ACIS	ACIS	Obspar format version number	7	7
Detector	ACIS-7	ACIS-7	Obspar file type	PREDICTED	ACTUAL
Grating	NONE	NONE	Obspar update status	NONE	UPDATED
Data mode	FAINT	FAINT	Number of optional ACIS chips dropped	0	0
Observation mode	POINTING	POINTING	On-chip summing requested	N	N
[deg] Pointing RA	356.929854	356.9041881822858	Subarray requested	CUSTOM	1/4
[deg] Pointing Dec	8.878090	8.888131180356964	Subarray start row	385	385
[deg] Pointing Roll	127.426375	127.5869414375124	Subarray row count	256	256
[mm] SIM focus pos	-0.684267	-0.6828225247311905	Alternating exposures requested	N	N
[mm] SIM defocus	0	0.001444936568705701	[s] Primary exposure time	0.000000	0.8
[mm] SIM translation stage pos	-190.132523	-190.1425803651734			
[mm] SIM translation stage offset	0	0.01005778216563158			
[s] Observation start time (MET)	240897703.184000	240896027.59538			
Observation start date	2005-08-20T04:00:39	2005-08-20T03:33:47			
[s] Observation end time (MET)	240912703.184000	240914206.48371			
Observation end date	2005-08-20T08:10:39	2005-08-20T08:36:46			
Read mode	TIMED	TIMED			

2.3 Aspect

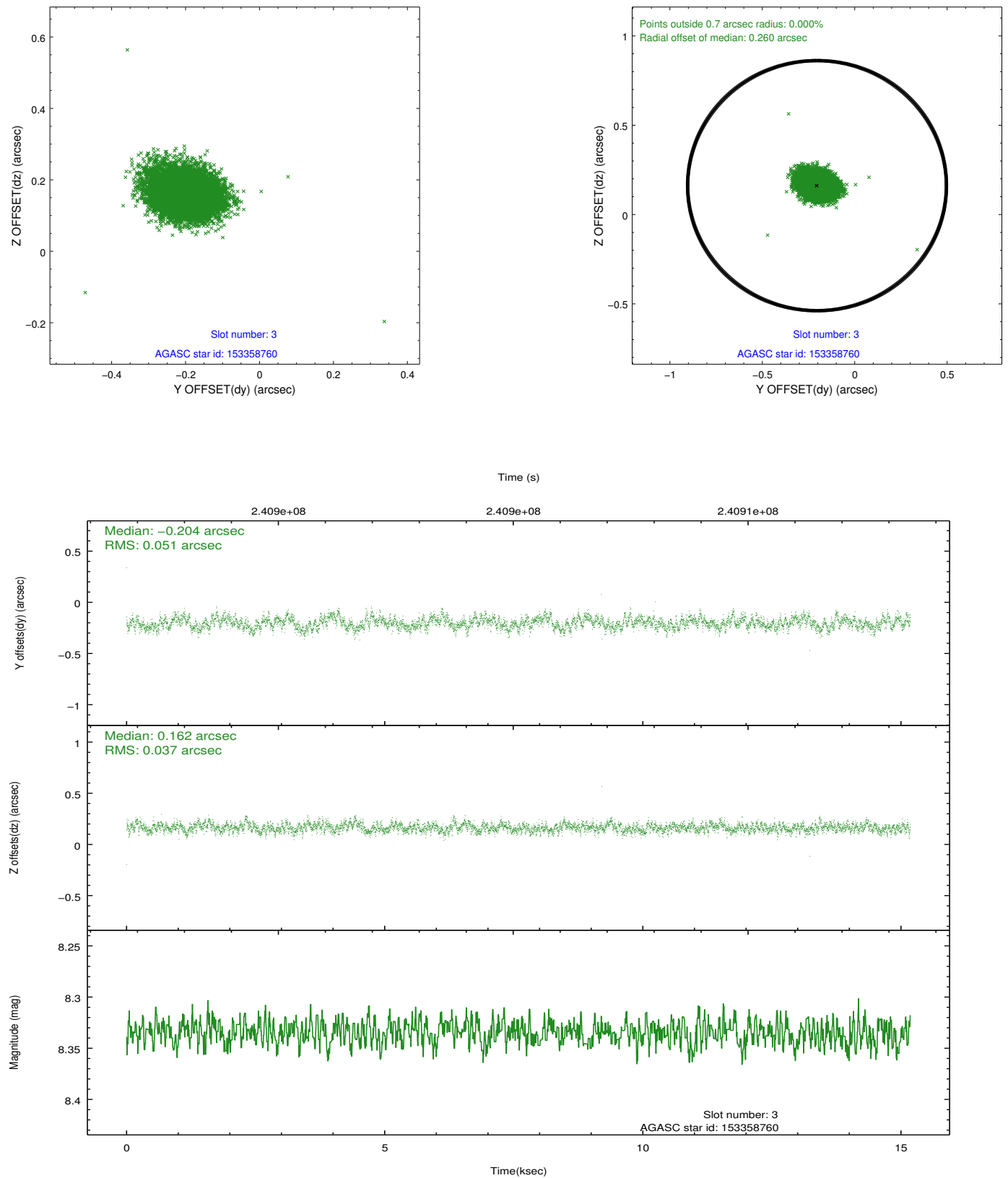


Slot Statistics

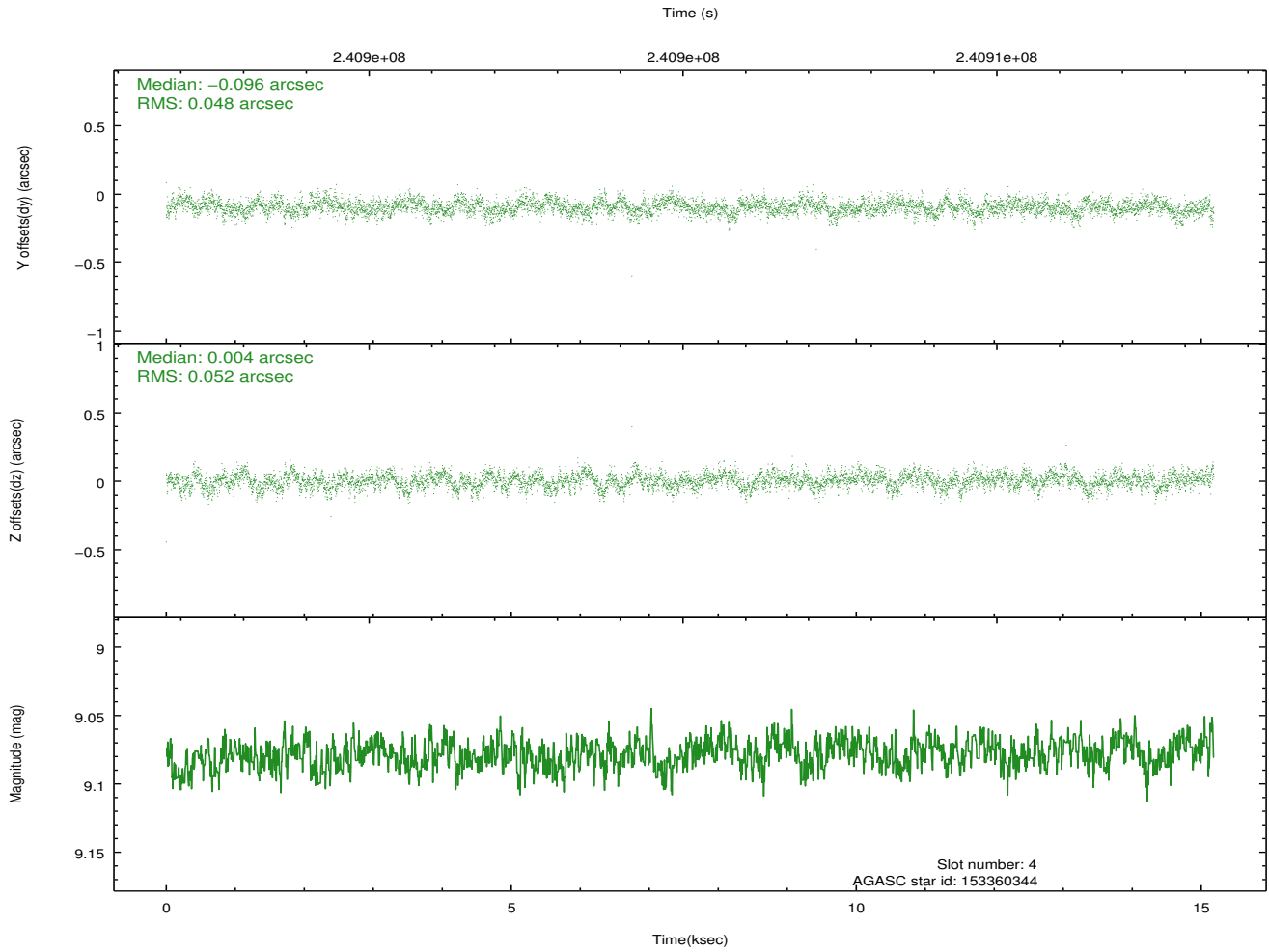
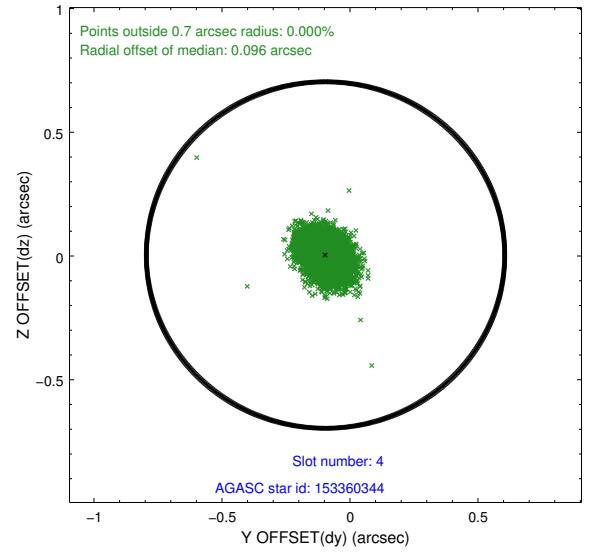
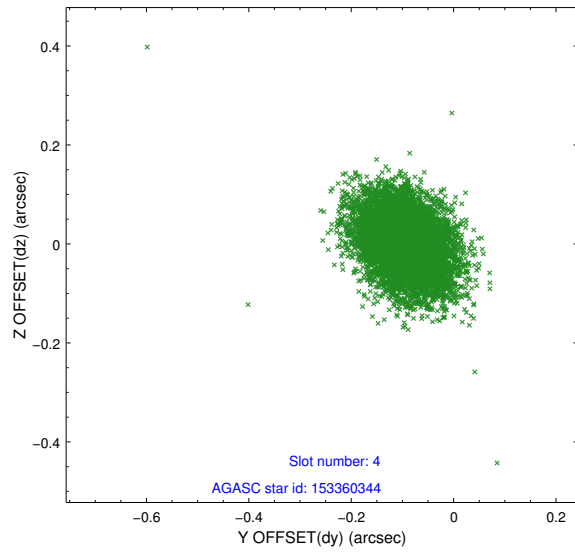
slot	status	id	mag	n_pts	med_dy	med_dz	dr1	dr2	ra	dec	mean_y	mean_z
0	FID	ACIS-S-1	7.19	3704	0.046	-0.043	0.007	0.011	0.000000	0.000000	935.32	-1726.88
1	FID	ACIS-S-5	7.24	3703	-0.103	0.026	0.007	0.011	0.000000	0.000000	-1813.68	170.42
2	FID	ACIS-S-6	7.36	3704	0.036	0.029	0.007	0.012	0.000000	0.000000	400.52	814.74
3	GUIDE	153358760	8.33	7402	-0.204	0.162	0.066	0.108	356.765278	9.548473	2271.27	-1002.64
4	GUIDE	153360344	9.08	7402	-0.096	0.004	0.074	0.123	356.395895	8.968263	1412.91	1309.74
5	GUIDE	153361304	6.93	7407	0.070	-0.035	0.060	0.097	357.050530	8.245596	-2069.60	1042.43
6	GUIDE	153363728	7.69	7344	0.055	-0.105	0.060	0.095	357.077402	8.188736	-2290.69	1090.60
7	GUIDE	153361184	9.78	7401	0.172	-0.029	0.107	0.172	356.028772	8.942994	2135.90	2400.75

2.4 Star Slots

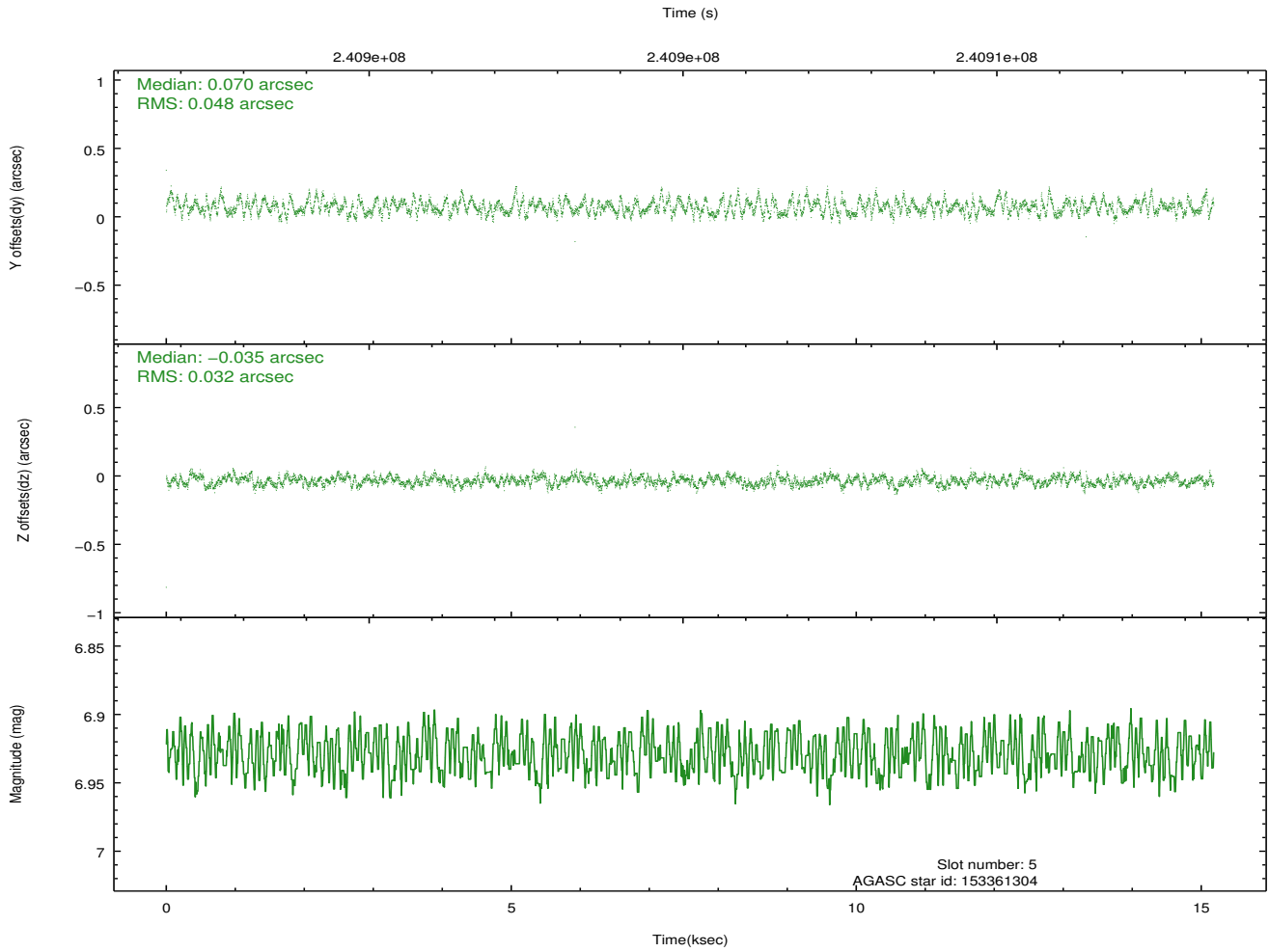
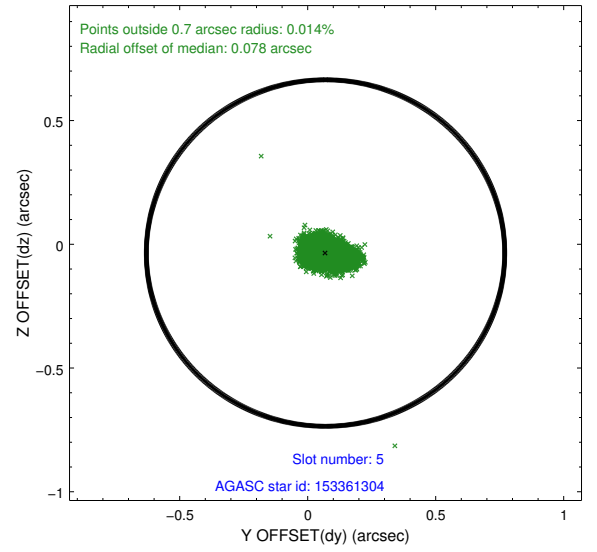
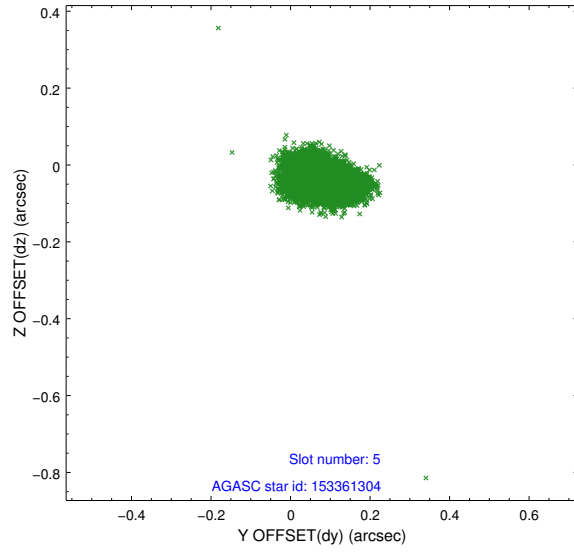
2.4.1 Slot 3



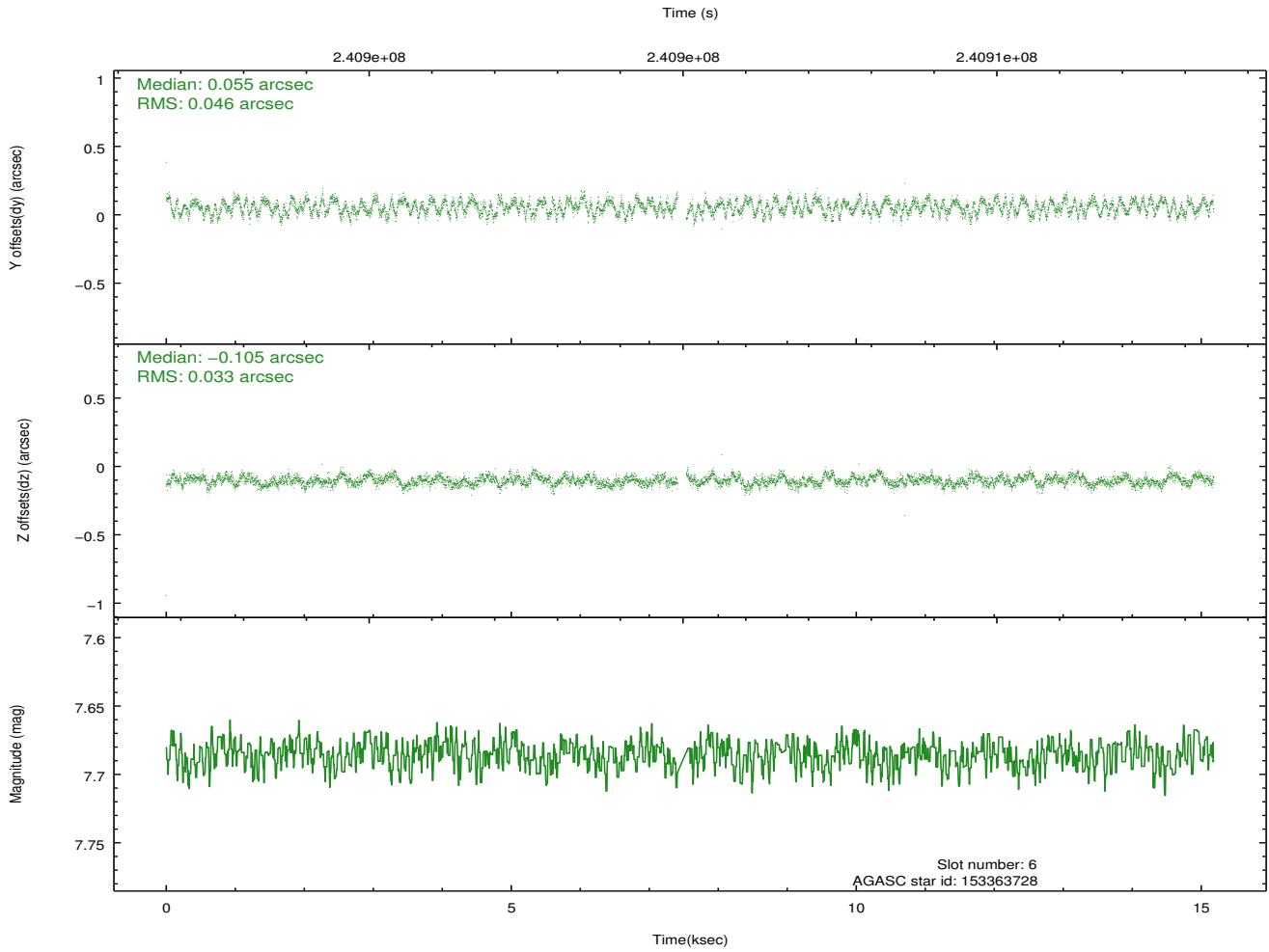
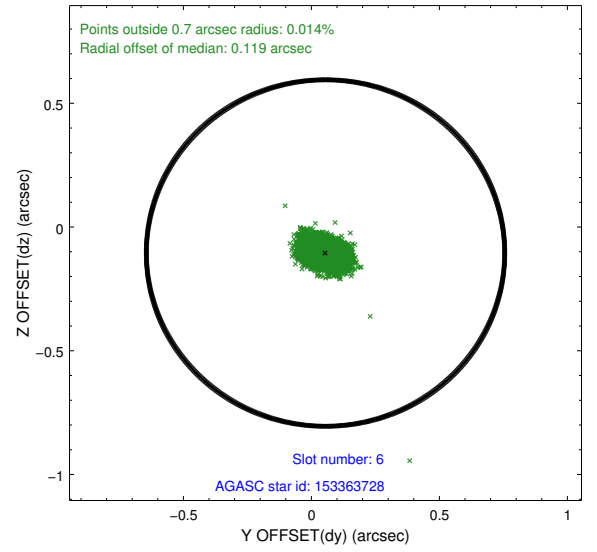
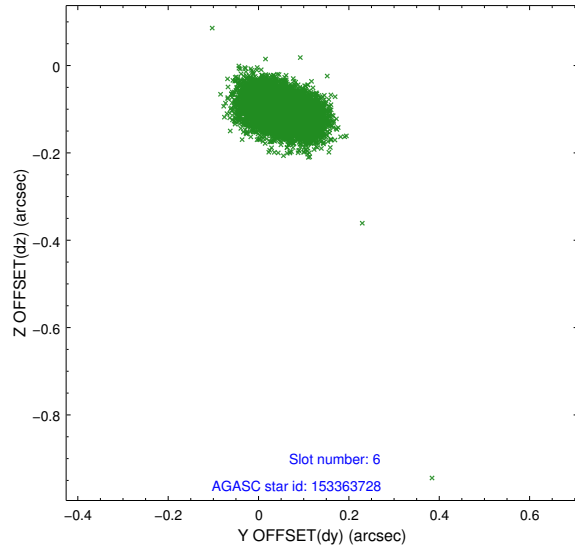
2.4.2 Slot 4



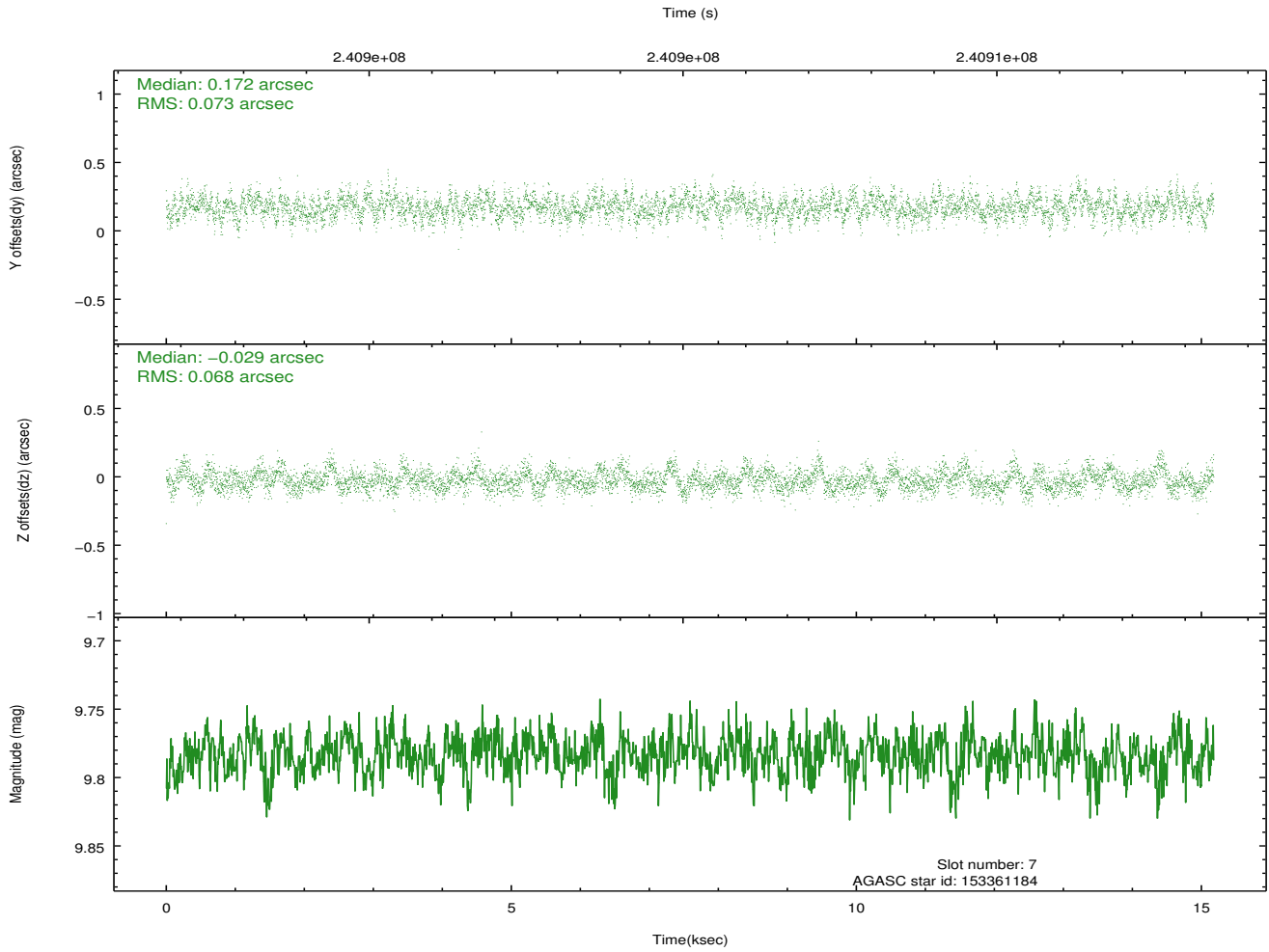
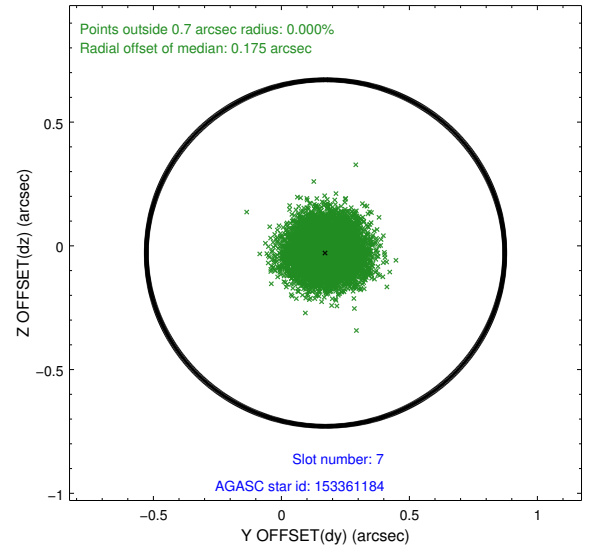
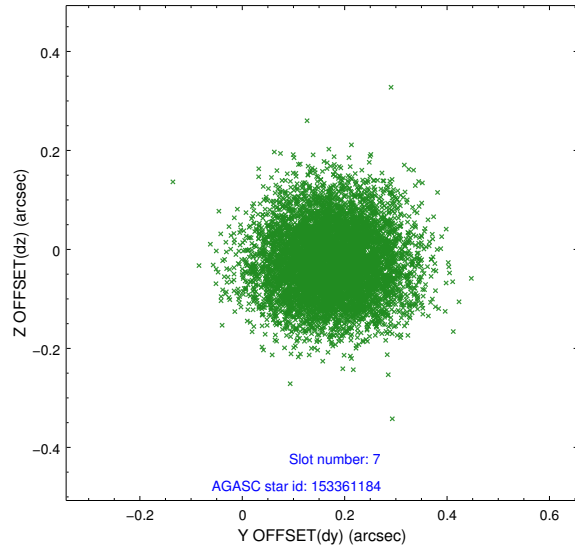
2.4.3 Slot 5



2.4.4 Slot 6

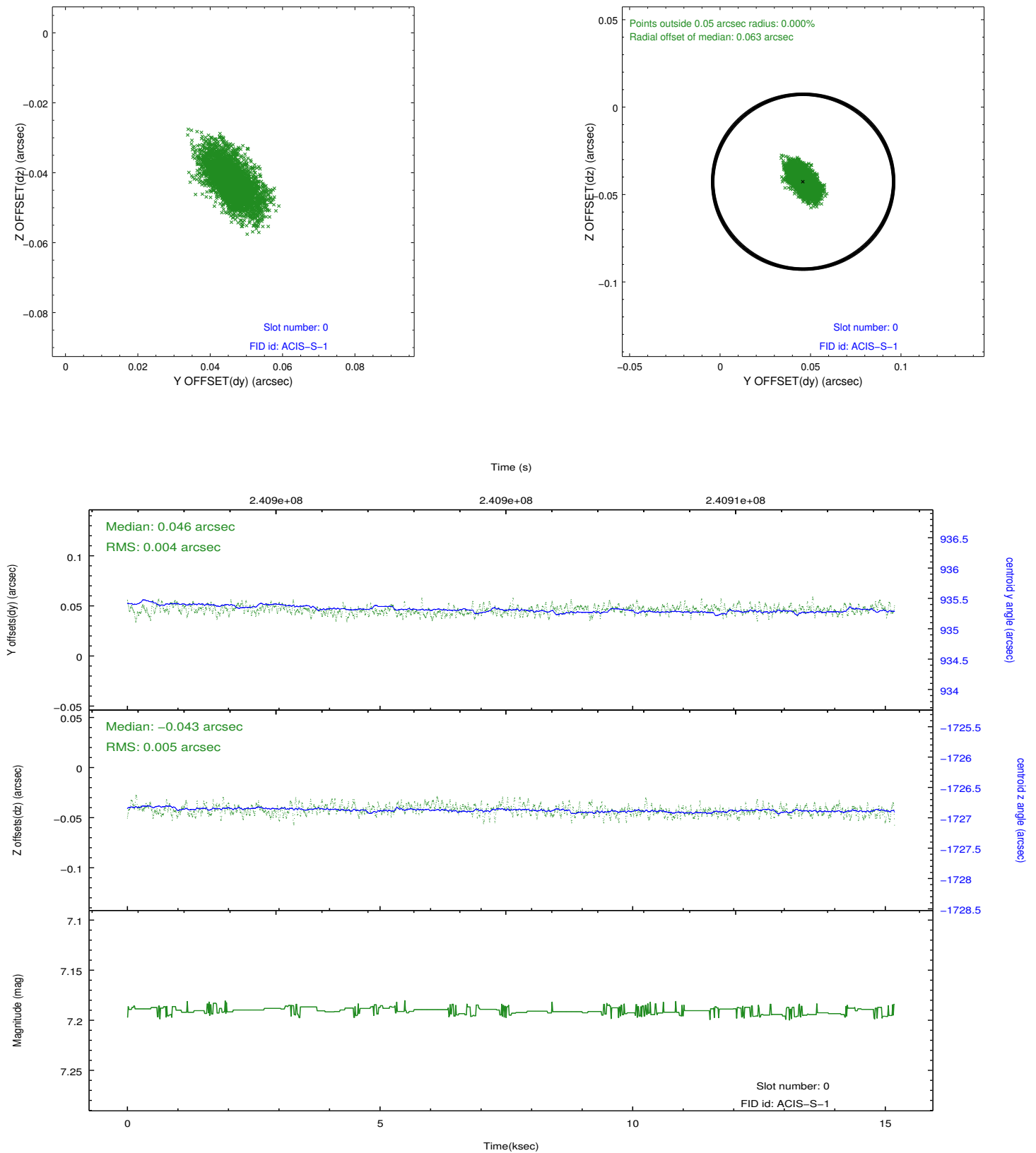


2.4.5 Slot 7

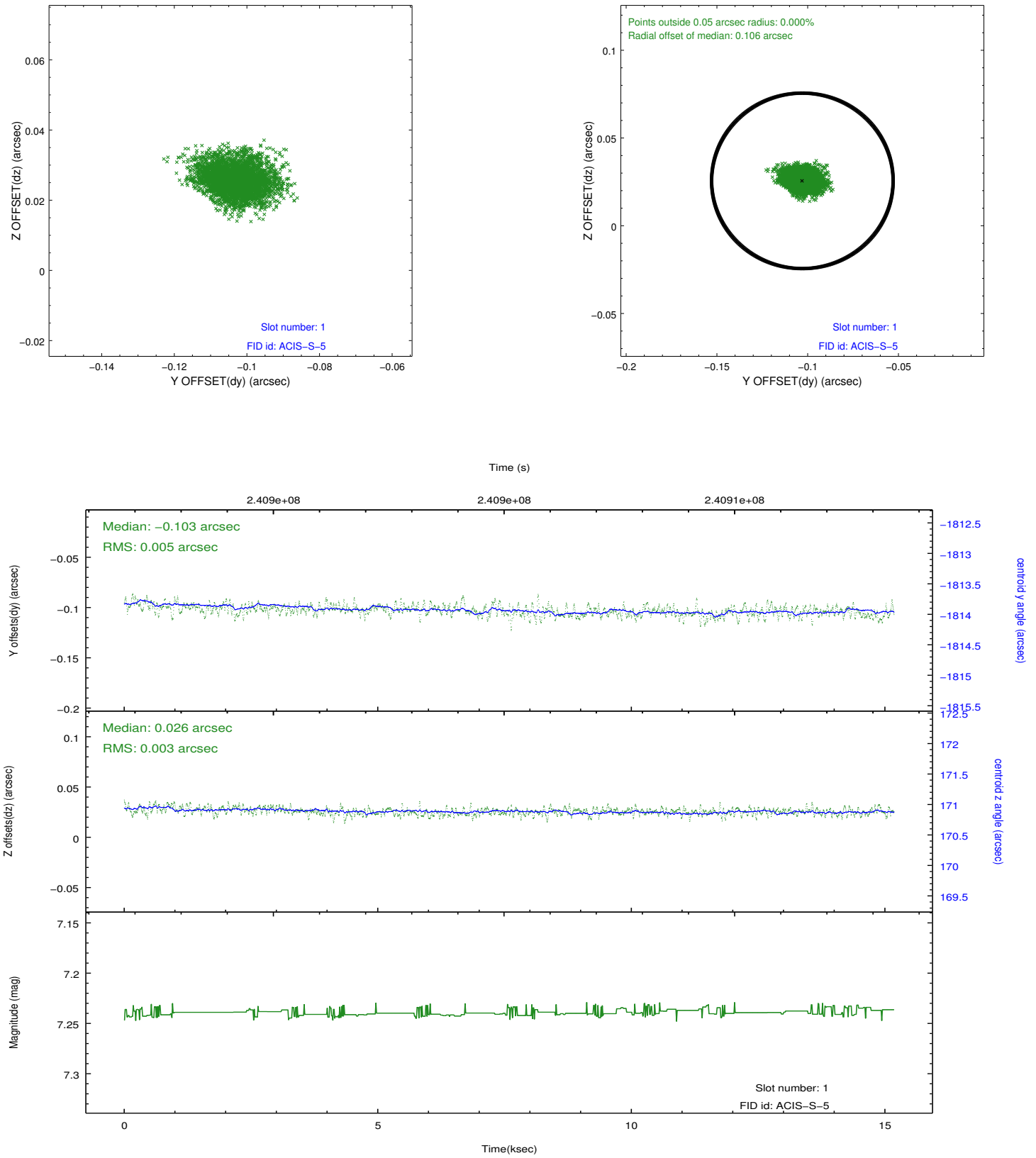


2.5 FID Slots

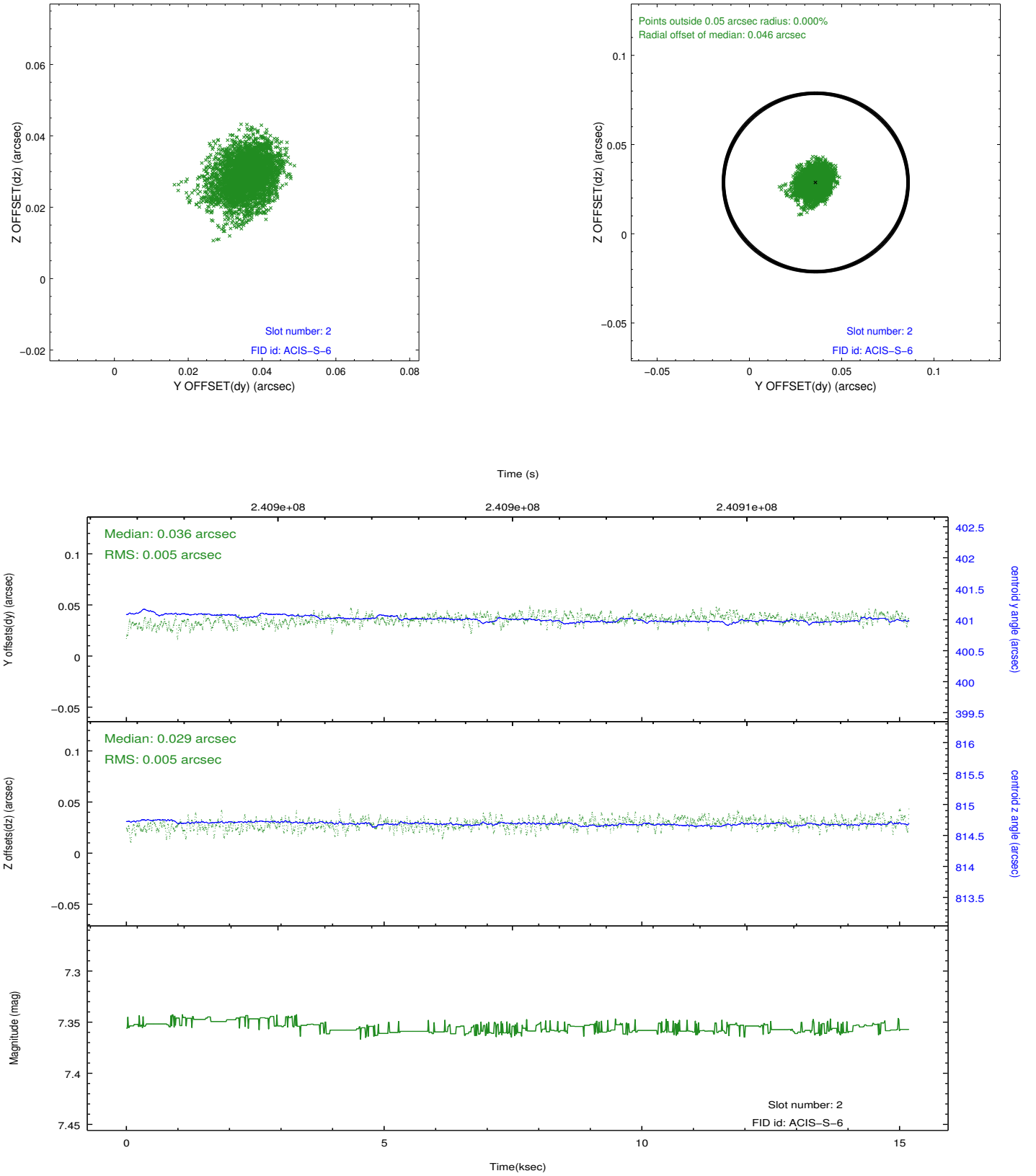
2.5.1 Slot 0



2.5.2 Slot 1



2.5.3 Slot 2



A Summary

A.1 Status

V&V Scientist	Jen Lauer
V&V Date (YYYY-MM-DD)	2013.01.24
V&V Edition	1
V&V Disposition and Status	OK
V&V Charge Time	15.1816

A.2 Comments

Roll preference met.