

V&V Reference Report

L2 ASCDS Version : 7.6.7

Observation 5630 - L2 Version 002
Chandra X-Ray Center

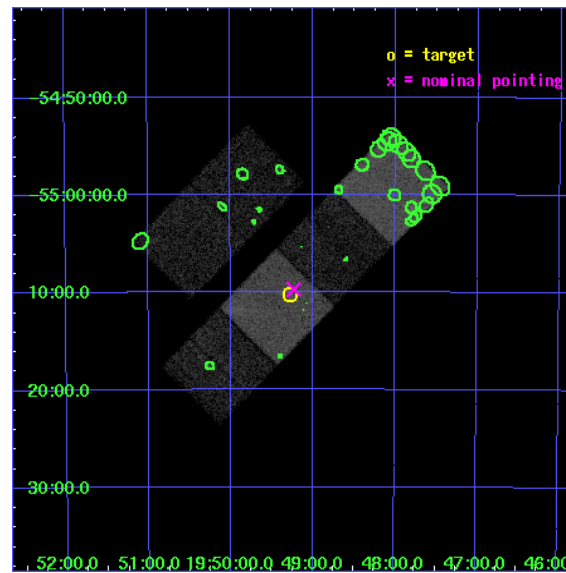
L2 Processing Date: Feb 23 2006

Contents

1	Front	2
2	OBI	3
2.1	OBI	3
2.1.1	Images	3
2.1.2	Bias	3
2.1.3	Parameters	4
2.1.4	Events	4
2.2	Compared Parameters	5
2.3	Aspect	6
2.4	Star Slots	9
2.4.1	Slot 3	9
2.4.2	Slot 4	10
2.4.3	Slot 5	11
2.4.4	Slot 6	12
2.4.5	Slot 7	13
2.5	FID Slots	14
2.5.1	Slot 0	14
2.5.2	Slot 1	15
2.5.3	Slot 2	16
3	Point Sources	17
A	Summary	18
A.1	Status	18
A.2	Comments	18

1 Front

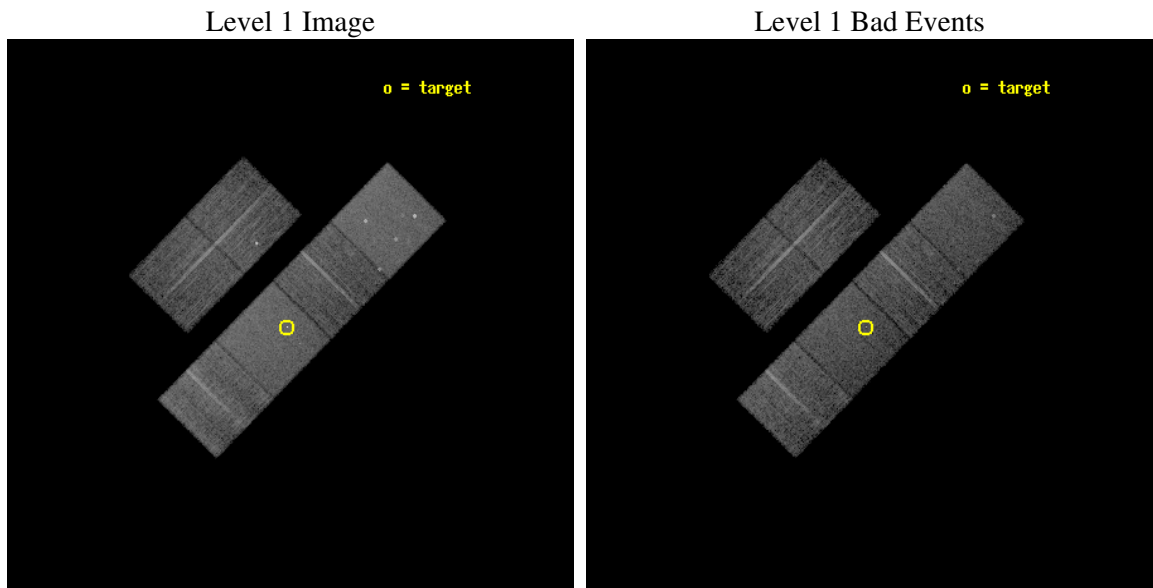
seq_num	701053
obs_id	5630
title	THE X-RAY PROPERTIES OF HIGHER REDSHIFT RED AGN
observer	Dr. Belinda Wilkes
object	2MASS 194915-551012
dtcycle	0
cycle	P
ra_targ	297.316667
dec_targ	-55.170167
ra_nom	297.30713769576
dec_nom	-55.16215486211
roll_nom	134.39103104618
revision	2
ontime	8959.9999666214
livetime	8846.5430519798
ontime2	8959.9999666214
ontime3	8959.9999666214
ontime5	8959.9999666214
ontime6	8959.9999666214
ontime7	8959.9999666214
ontime8	8959.9895345569
l2events	107423



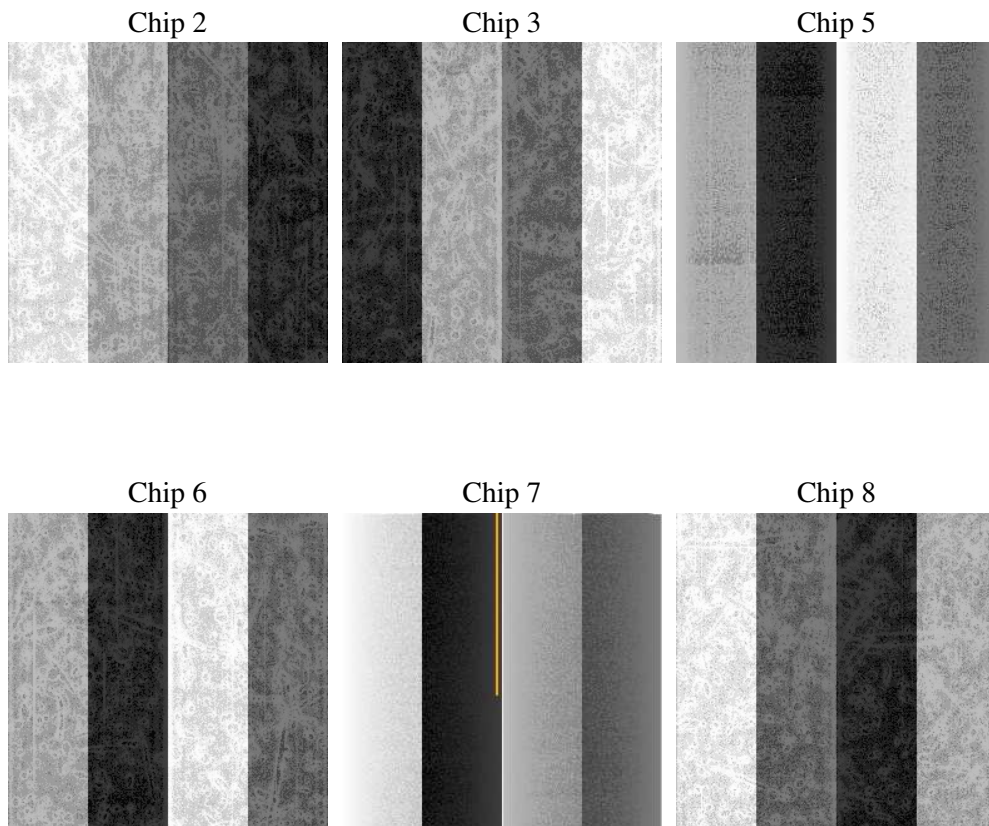
2 OBI

2.1 OBI

2.1.1 Images



2.1.2 Bias



2.1.3 Parameters

obi_num	0
ascdsver	7.6.7
caldsver	3.2.1
date	2006-02-23T21:32:29
revision	2

sched_exp_time	9000.000000
ontime	8964.6070958674
ontime2	8964.6070958674
ontime3	8964.6070958674
ontime5	8964.6070958674
ontime6	8964.6070958674
ontime7	8964.6070958674
ontime8	8964.6070958674
l1events	468173

2.1.4 Events

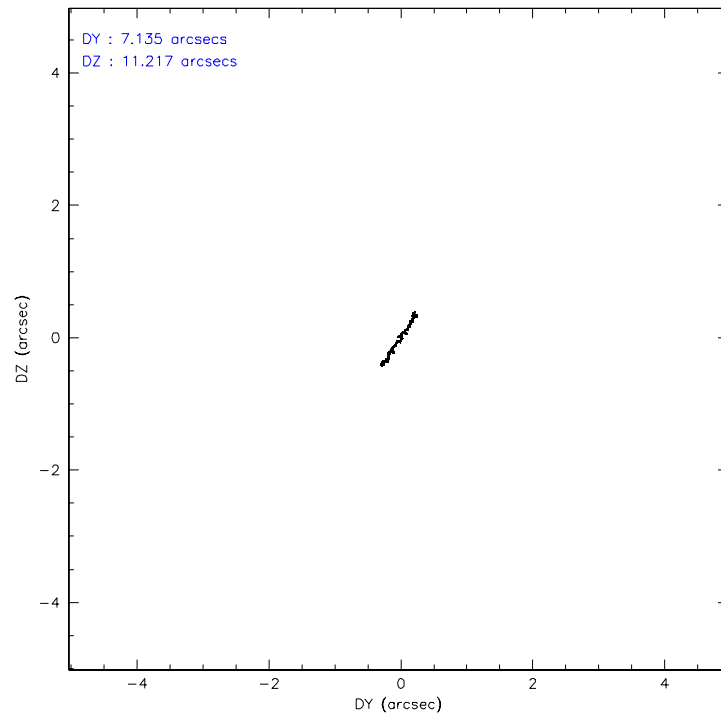
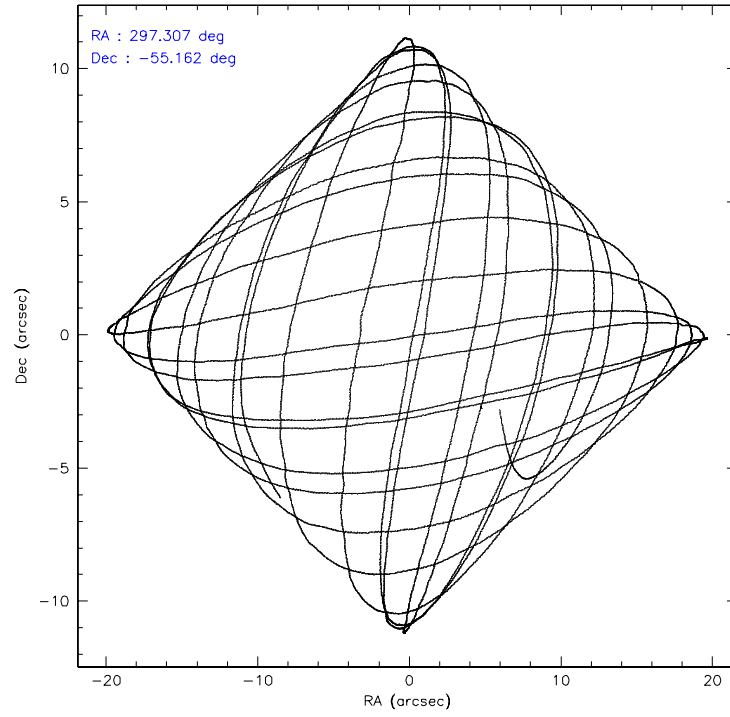
	ccd 2	ccd 3	ccd 5	ccd 6	ccd 7	ccd 8
level 1 events	65916	61707	97906	66492	89747	86405
rejected events	56512	53272	54037	57818	53725	64991
rejected %	85%	86%	55%	86%	59%	75%

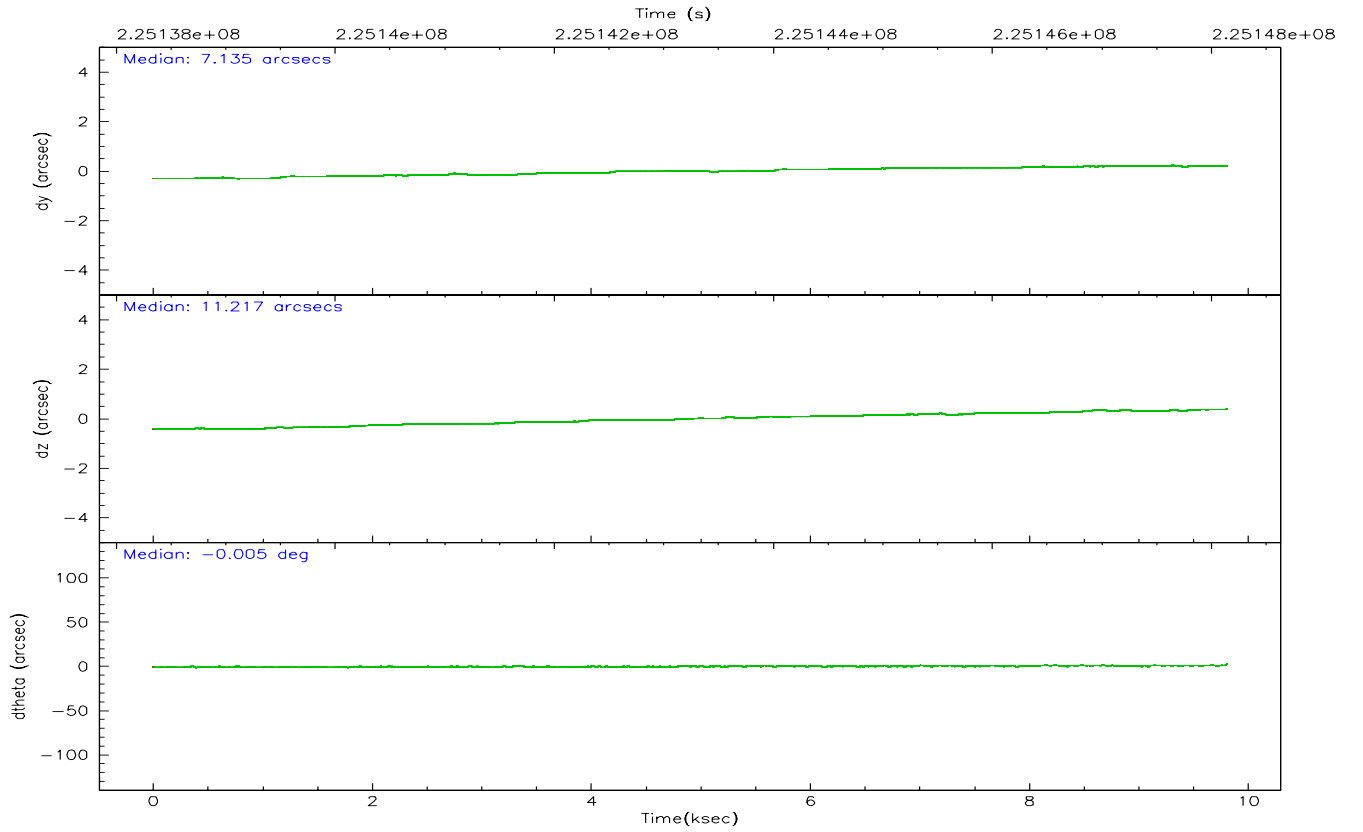
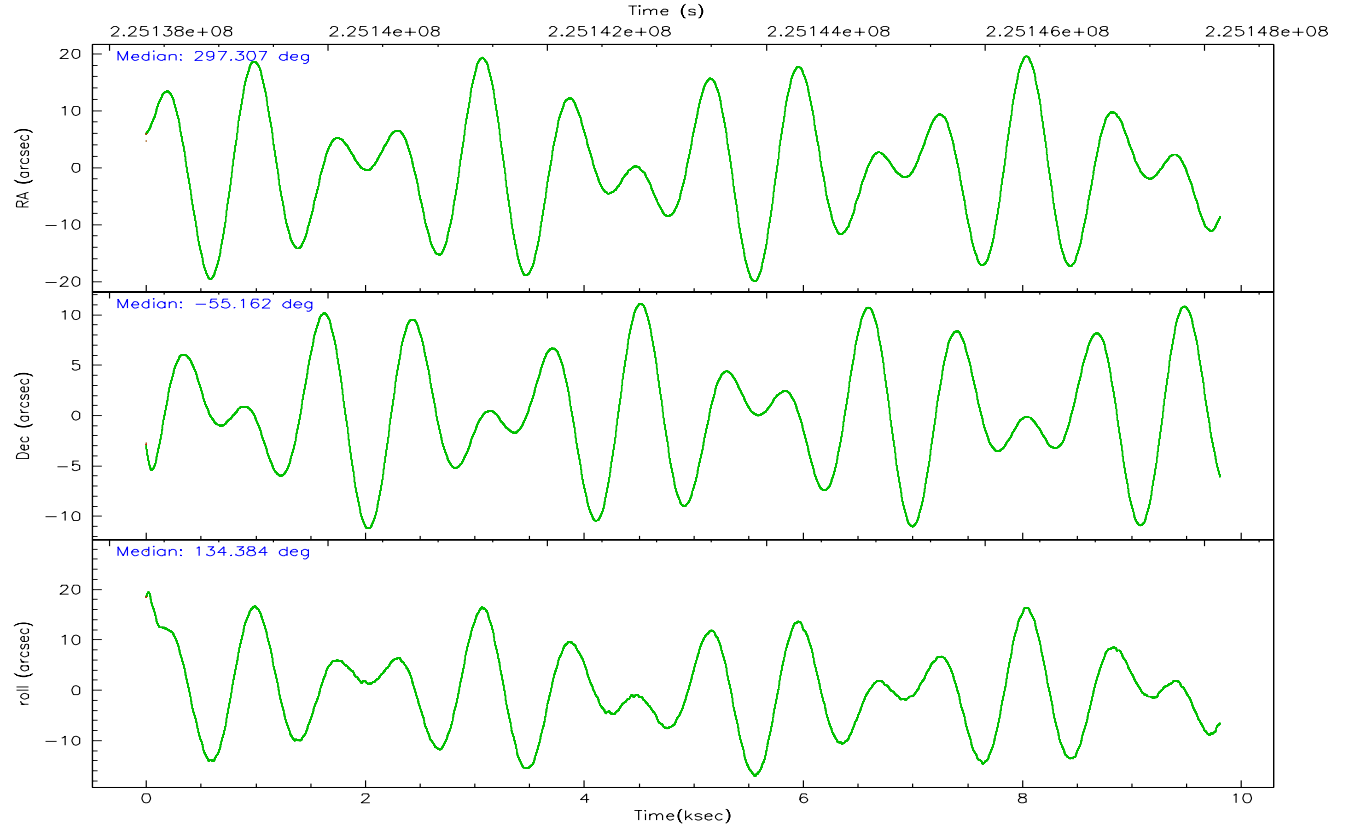
	ccd 2	ccd 3	ccd 5	ccd 6	ccd 7	ccd 8
grade 0 events	4679	3836	4280	3633	2610	7060
	7%	6%	4%	5%	2%	8%
grade 1 events	48	39	142	26	60	77
	0%	0%	0%	0%	0%	0%
grade 2 events	1861	1716	13605	1863	8975	4352
	2%	2%	13%	2%	10%	5%
grade 3 events	748	715	969	760	1999	2510
	1%	1%	0%	1%	2%	2%
grade 4 events	709	747	963	704	1890	2383
	1%	1%	0%	1%	2%	2%
grade 5 events	2494	2866	4606	2918	5568	3859
	3%	4%	4%	4%	6%	4%
grade 6 events	1409	1424	24069	1721	20561	5115
	2%	2%	24%	2%	22%	5%
grade 7 events	53968	50364	49272	54867	48084	61049
	81%	81%	50%	82%	53%	70%

2.2 Compared Parameters

Parameter	Planned	Actual	Parameter	Planned	Actual
Instrument	ACIS	ACIS	Obspar format version number	6	6
Detector	ACIS-235678	ACIS-235678	Obspar file type	PREDICTED	ACTUAL
Grating	NONE	NONE	Obspar update status	NONE	UPDATED
Data mode	FAINT	FAINT	On-chip summing requested	N	N
Observation mode	POINTING	POINTING	Subarray requested	NONE	NONE
Pointing RA	297.353214	297.3071376957561	Alternating exposures requested	N	N
Pointing Dec	-55.169129	-55.1621548621099	Primary exposure time	0.000000	3.2
Pointing Roll	134.272223	134.391031046178			
SIM focus pos (mm)	-0.684267	-0.6828225247311905			
SIM defocus (mm)	0	0.001444936568705701			
SIM translation stage pos (mm)	-190.132523	-190.1425803651734			
SIM translation stage offset (mm)	0	0.01005778216563158			
Observation start time	225139142.184000	225137872.13977			
Observation start date	2005-02-18T18:37:58	2005-02-18T18:17:52			
Observation end time	225148142.184000	225149268.60278			
Observation end date	2005-02-18T21:07:58	2005-02-18T21:27:48			
Read mode	TIMED	TIMED			

2.3 Aspect



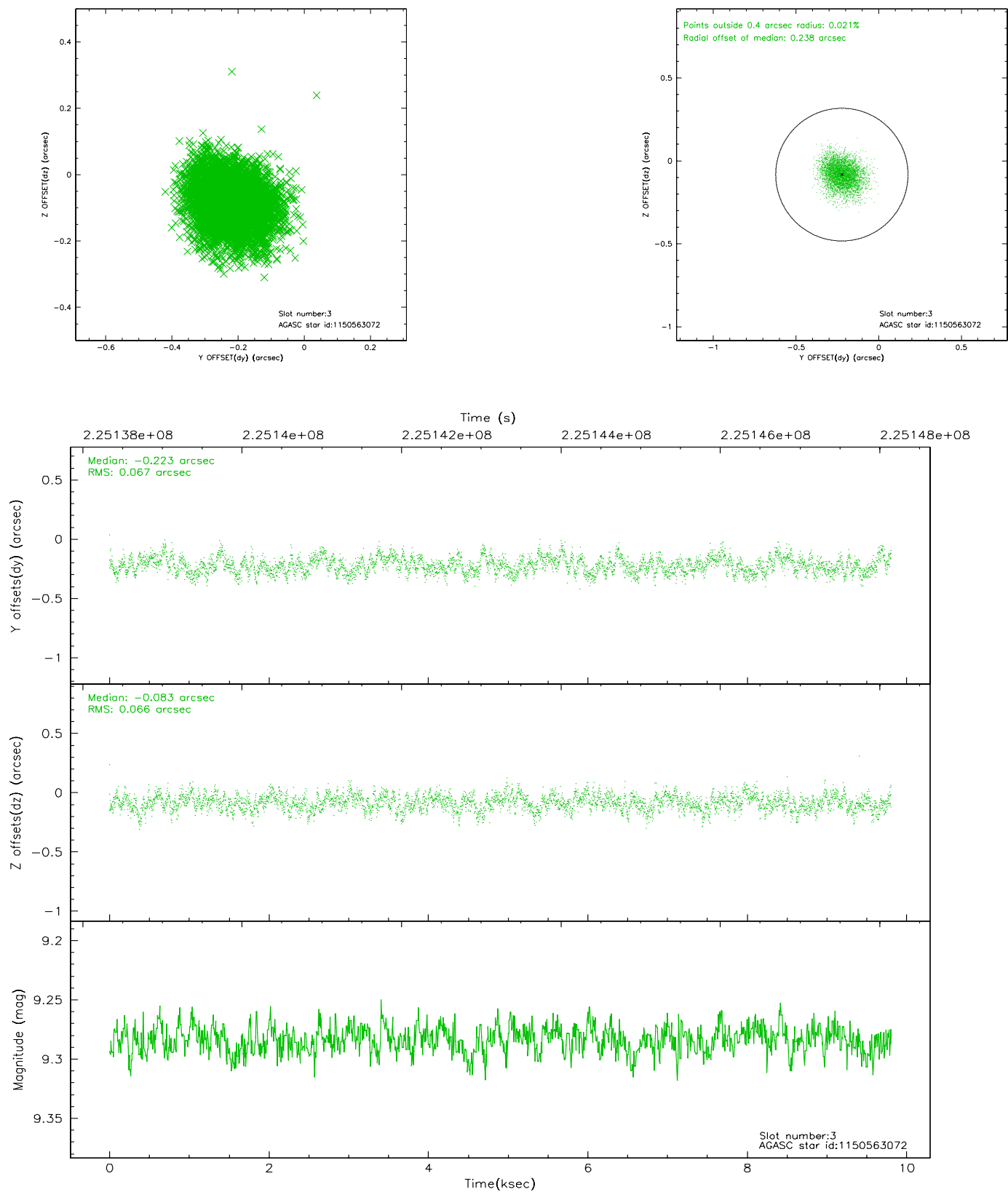


Slot Statistics

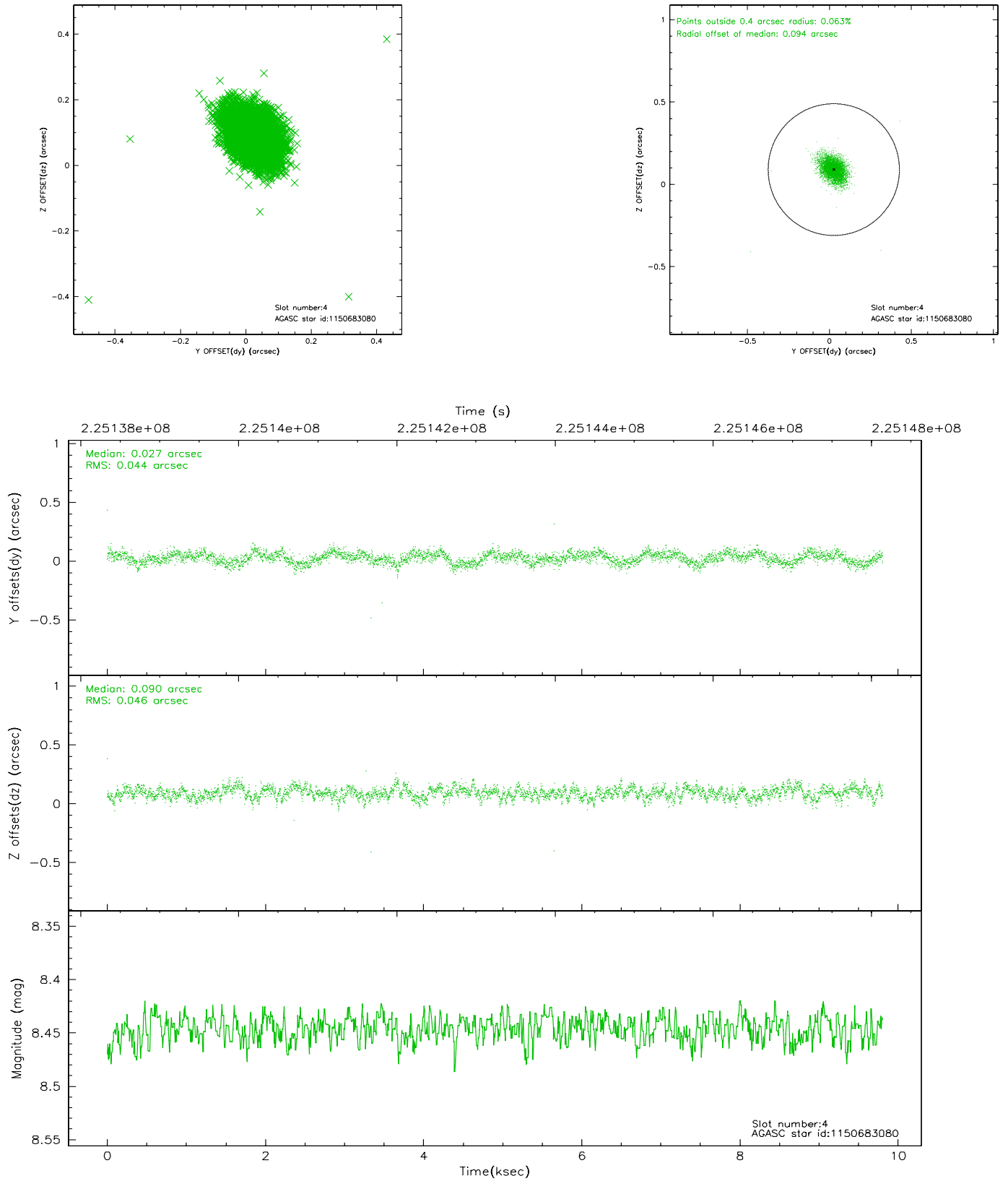
slot	status	id	mag	n_pts	med_dy	med_dz	dr1	dr2	ra	dec	mean_y	mean_z
0	FID	ACIS-S-2	7.10	2392	-0.028	0.011	0.011	0.017	0.000000	0.000000	-759.87	-1732.43
1	FID	ACIS-S-4	7.20	2393	0.033	0.011	0.006	0.010	0.000000	0.000000	2153.19	175.54
2	FID	ACIS-S-5	7.23	2393	-0.036	-0.013	0.011	0.017	0.000000	0.000000	-1812.05	169.74
3	GUIDE	1150563072	9.28	4784	-0.223	-0.083	0.100	0.161	296.403777	-55.285043	1050.26	1694.47
4	GUIDE	1150683080	8.45	4784	0.027	0.090	0.065	0.109	297.306836	-54.888638	790.53	-635.42
5	GUIDE	1150683376	8.62	4786	-0.083	0.110	0.072	0.121	297.355078	-54.524093	1660.49	-1623.51
6	GUIDE	1150683784	8.66	4785	0.125	-0.210	0.070	0.110	296.840045	-54.917208	1388.34	129.66
7	GUIDE	1150685296	8.25	4783	0.154	0.098	0.067	0.106	297.953238	-55.420860	-1507.86	-241.42

2.4 Star Slots

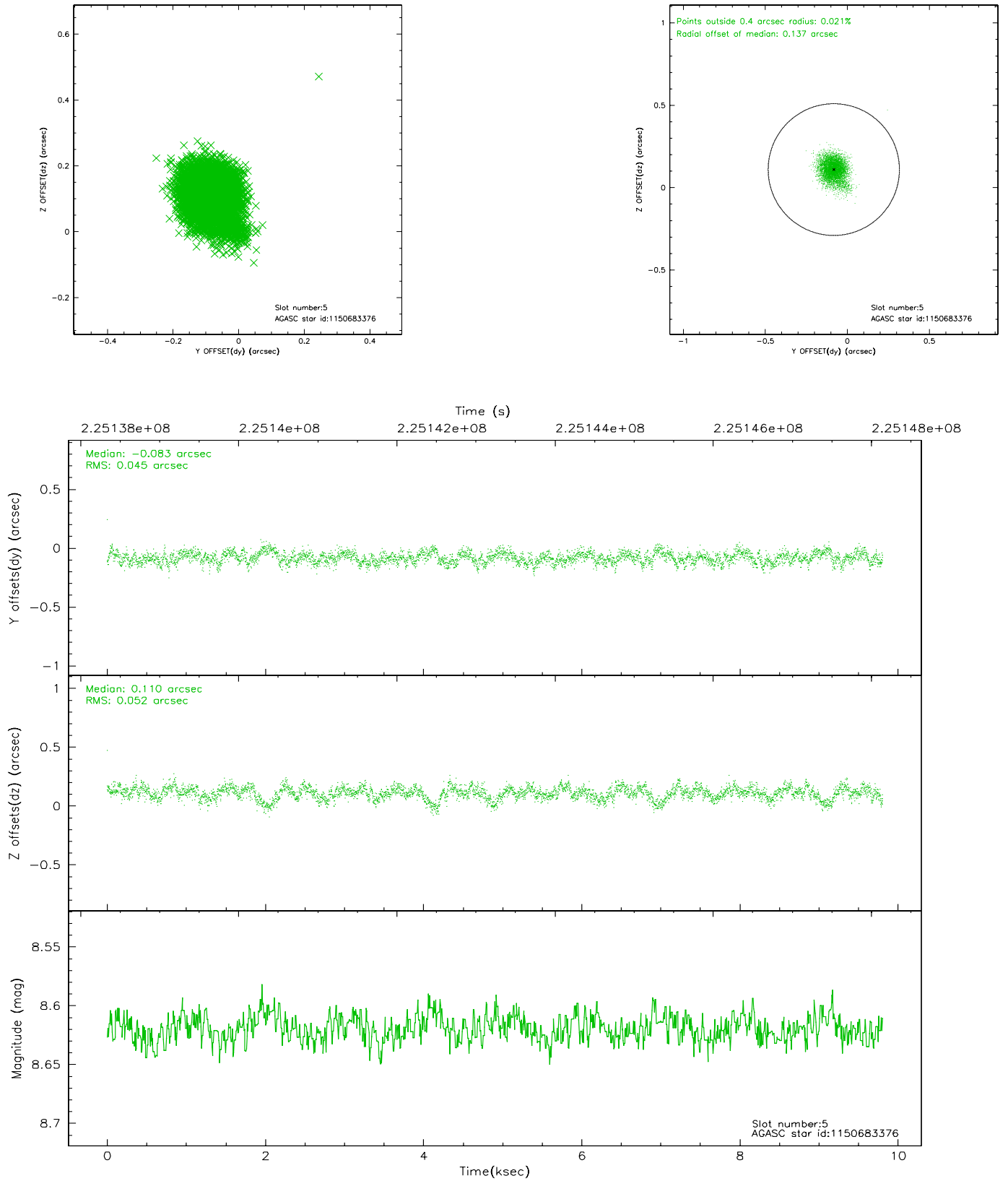
2.4.1 Slot 3



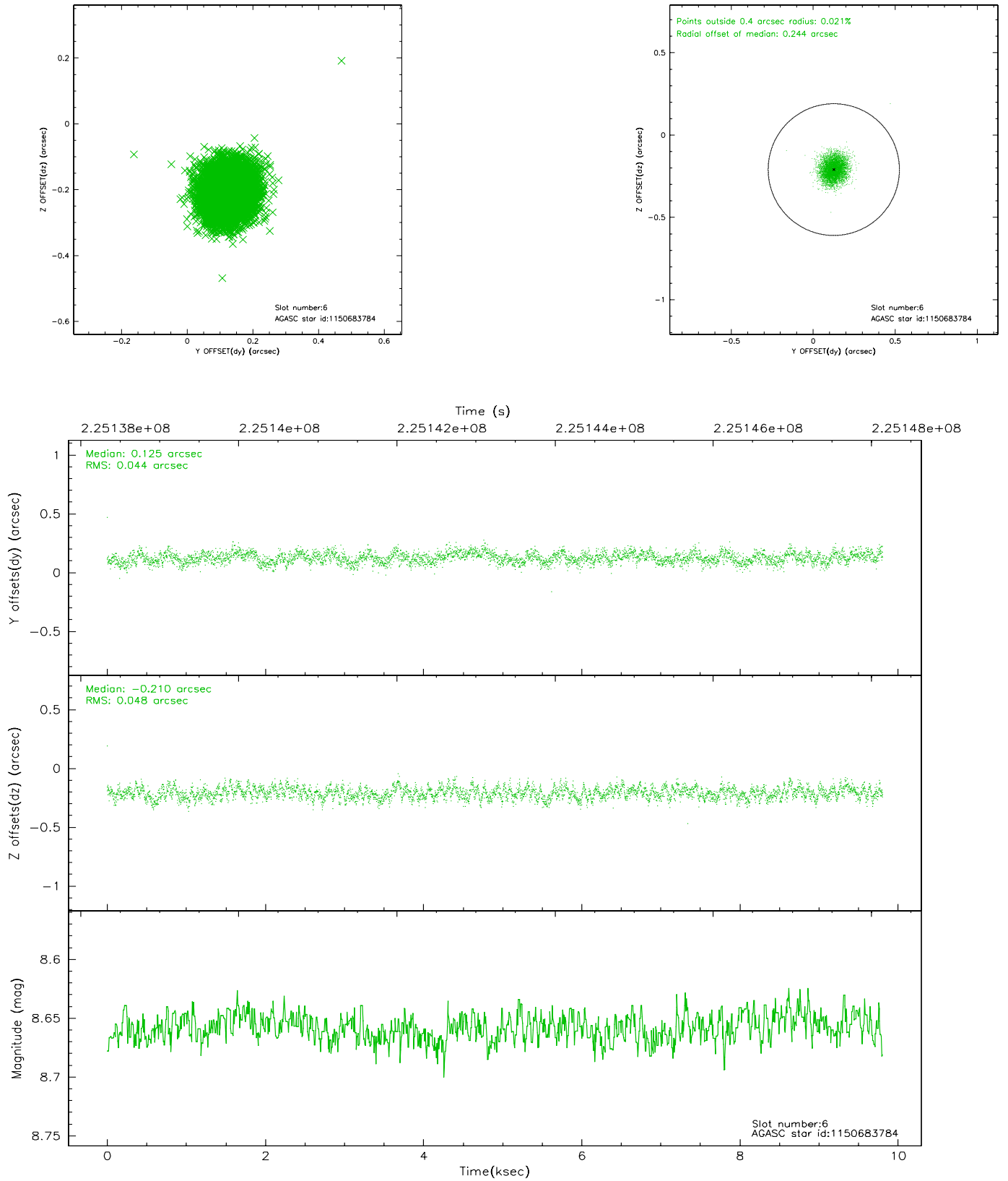
2.4.2 Slot 4



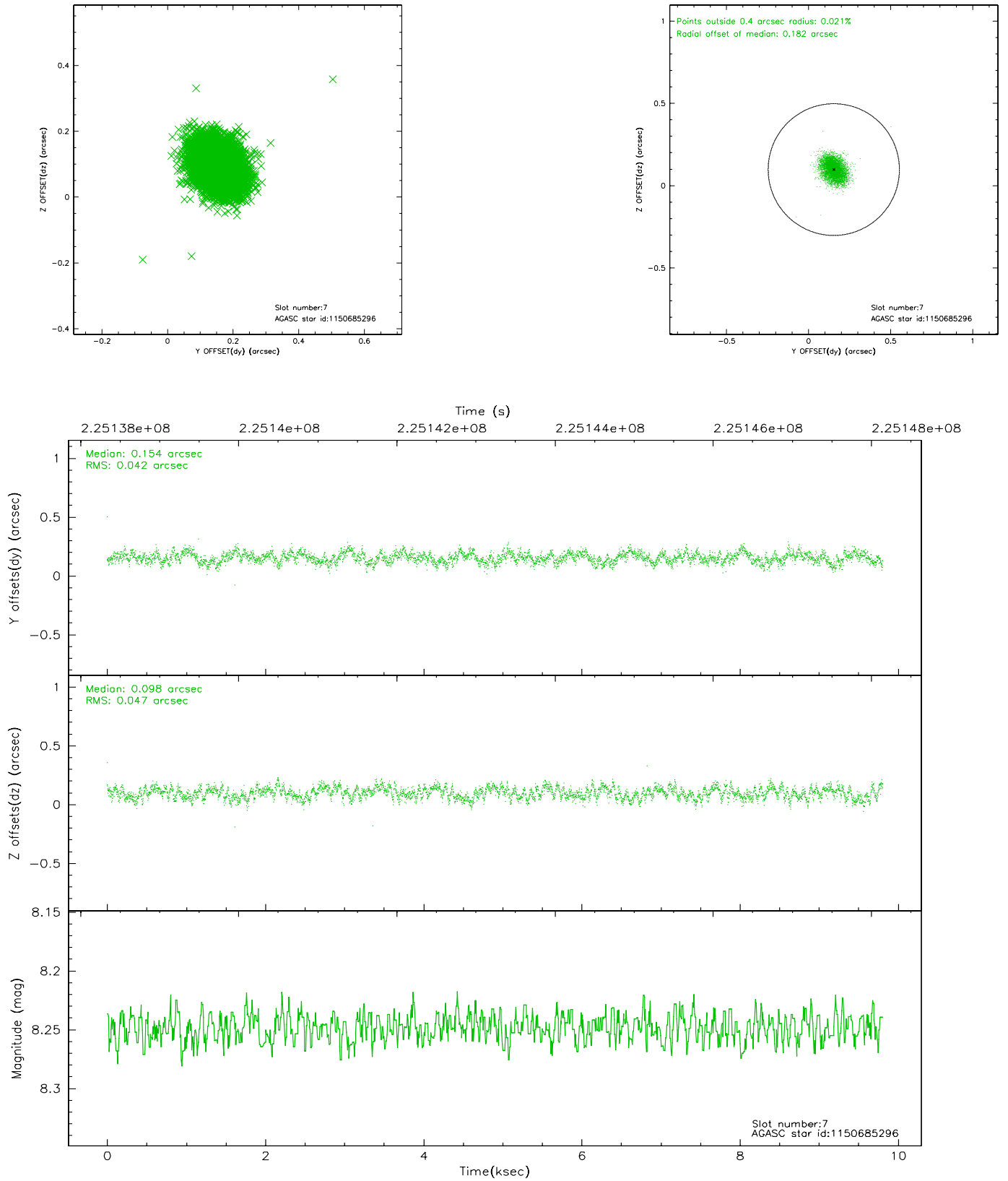
2.4.3 Slot 5



2.4.4 Slot 6

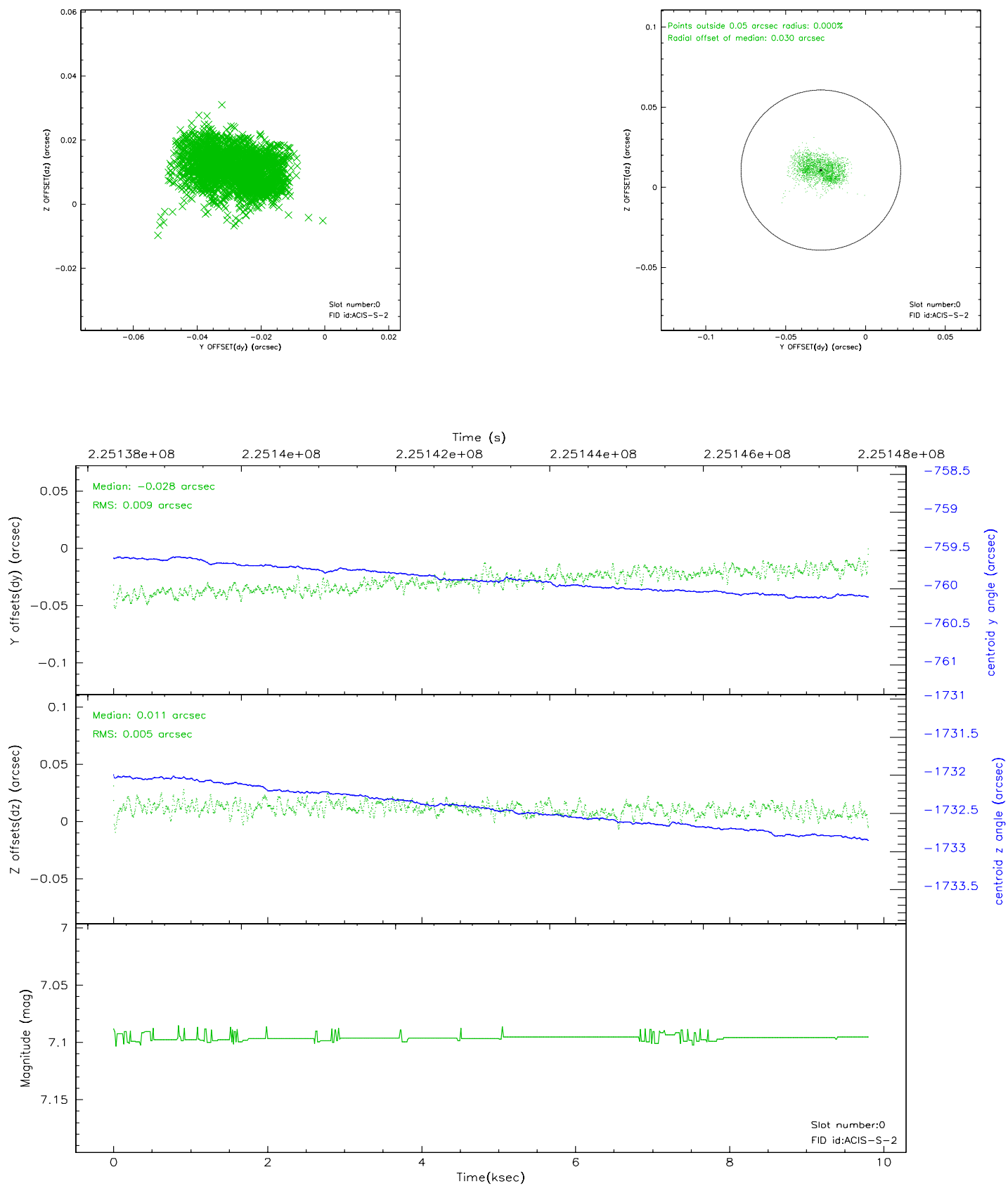


2.4.5 Slot 7

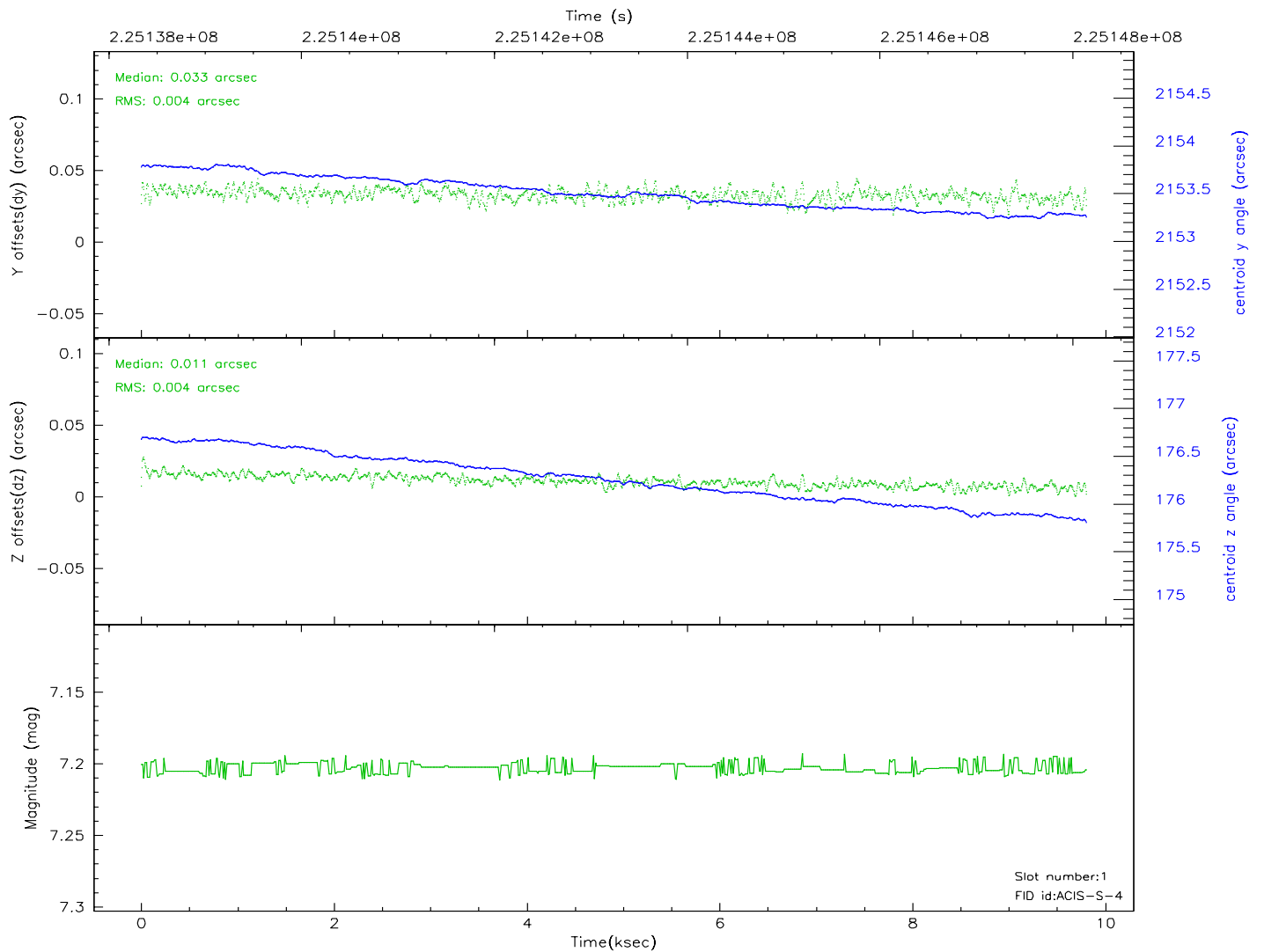
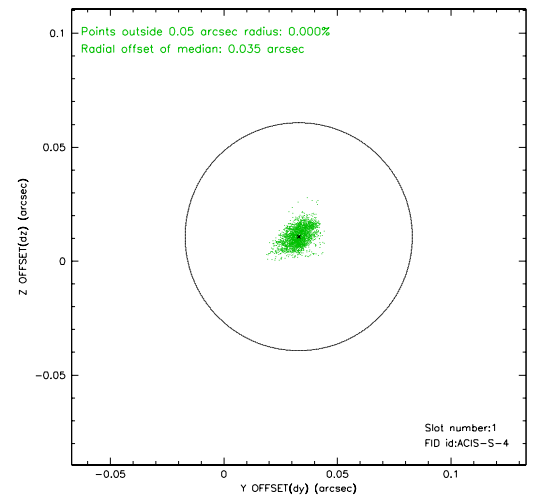
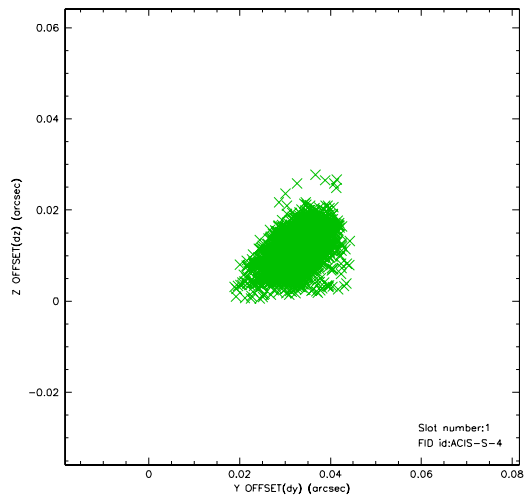


2.5 FID Slots

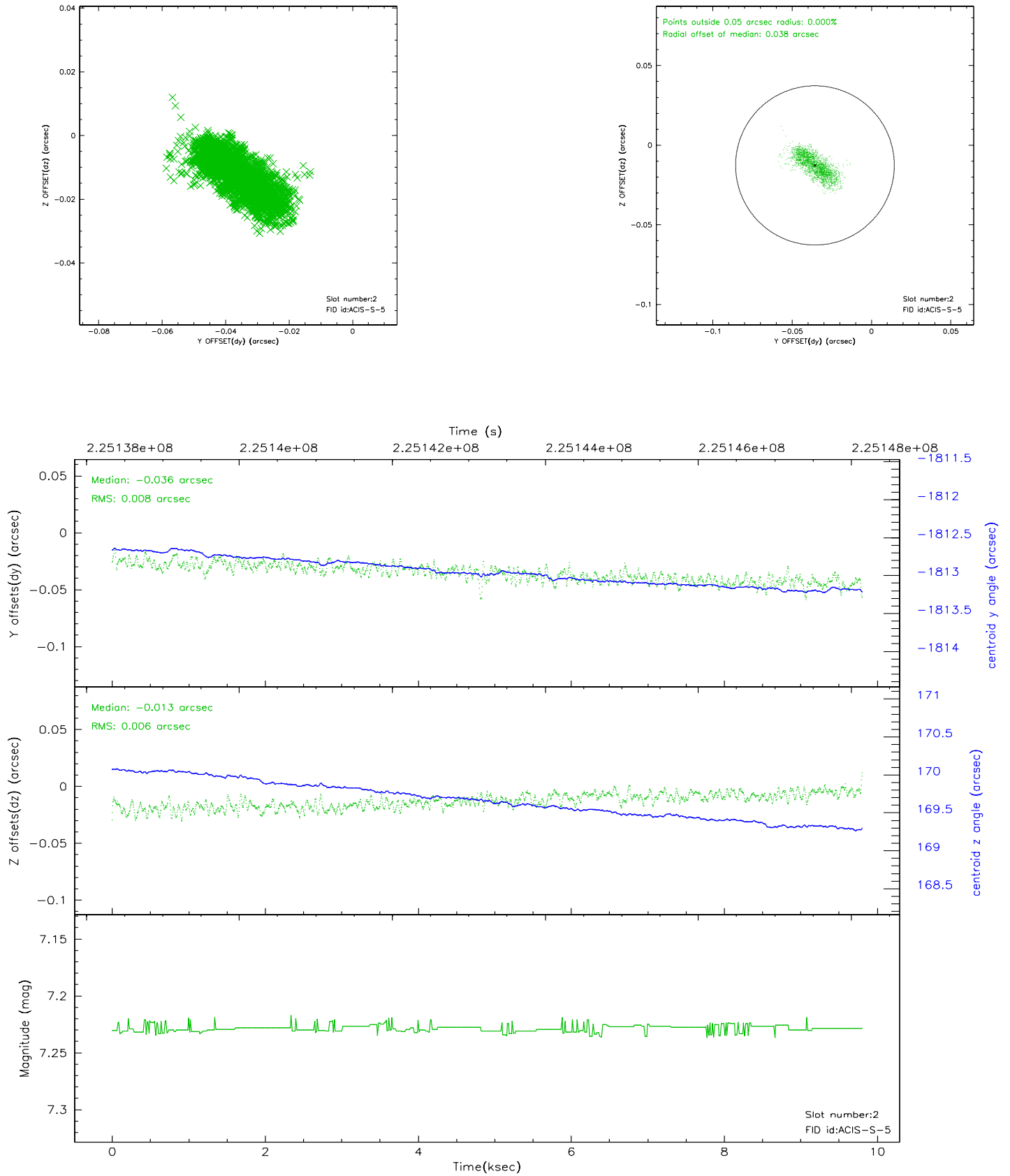
2.5.1 Slot 0



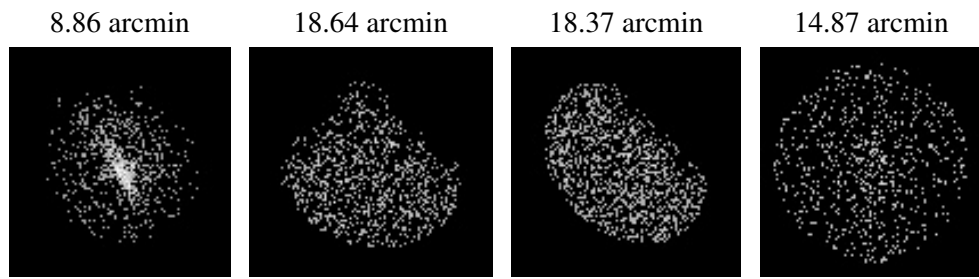
2.5.2 Slot 1



2.5.3 Slot 2



3 Point Sources



A Summary

A.1 Status

V&V Scientist	Beth Sundheim
V&V Date (YYYY-MM-DD)	2006.02.24
V&V Edition	1
V&V Disposition and Status	OK
V&V Charge Time	8.959999

A.2 Comments