

V&V Reference Report

L2 ASCDS Version : 8.4.5

Observation 56210 - L2 Version 2
Chandra X-Ray Center

L2 Processing Date : Jun 28 2012

Contents

1	Front	2
2	OBI	3
2.1	OBI	3
2.1.1	Images	3
2.1.2	Bias	3
2.1.3	Parameters	4
2.1.4	Events	4
2.2	Compared Parameters	5
2.3	Star Slots	6
2.4	FID Slots	6
A	Summary	7
A.1	Status	7
A.2	Comments	7

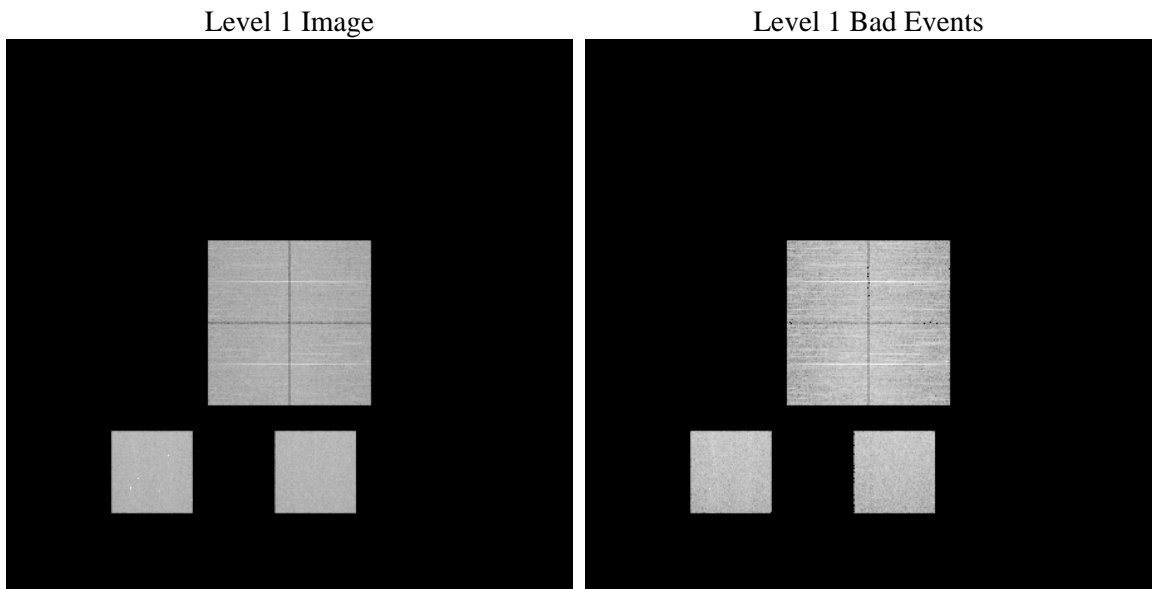
1 Front

seq_num	 	Sequence number
obs_id	56210	Observation id
title	ACIS-012357 diagnostics	Proposal title
observer	CHANDRA engineering request/realtime commanding	Principal investig
object	 	Source name
dtcycle	0	
cycle	P	events from which exps? Prim/Second/Both
ra_targ	0.0	Observer's specified target RA [deg]
dec_targ	0.0	Observer's specified target Dec [deg]
ra_nom	78.972810526033	Nominal RA [deg]
dec_nom	-36.018382409461	Nominal Dec [deg]
roll_nom	186.90712577563	Nominal Roll [deg]
revision	2	Processing version of data
ontime	8278.3999692202	Sum of GTIs [s]
livetime	8173.5738841559	Livetime [s]
ontime0	8278.3999692202	Sum of GTIs [s]
ontime1	8278.3999692202	Sum of GTIs [s]
ontime2	8278.3999692202	Sum of GTIs [s]
ontime3	8278.3999692202	Sum of GTIs [s]
ontime5	8278.3999692202	Sum of GTIs [s]
ontime7	8278.3999692202	Sum of GTIs [s]
l2events	437493	Number of level 2 events

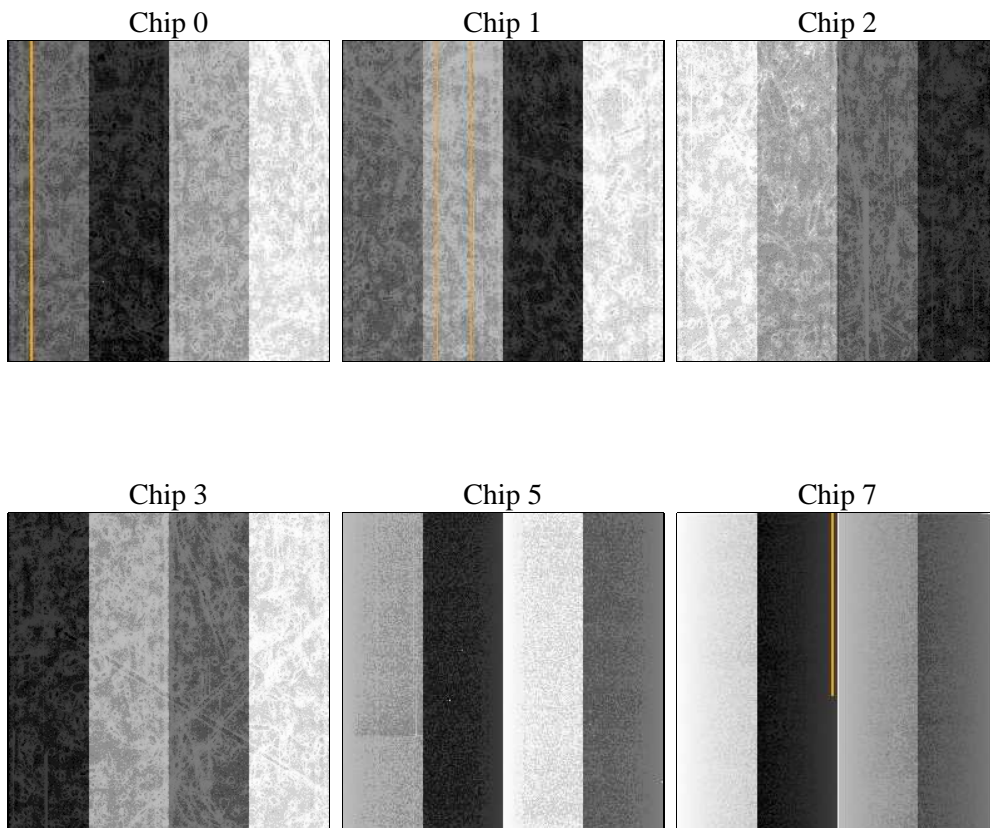
2 OBI

2.1 OBI

2.1.1 Images



2.1.2 Bias



2.1.3 Parameters

obi_num	1	Obi number	sched_exp_time	0.0	[s] Scheduled observation exposure time
ascdsver	8.4.5	Processing system revision	ontime	8278.3999692202	Sum of GTIs [s]
caldsver	4.5.0	 	ontime0	8278.3999692202	Sum of GTIs [s]
date	2012-06-28T04:15:26	Date and time of file creation	ontime1	8278.3999692202	Sum of GTIs [s]
revision	2	Processing version of data	ontime2	8278.3999692202	Sum of GTIs [s]
			ontime3	8278.3999692202	Sum of GTIs [s]
			ontime5	8278.3999692202	Sum of GTIs [s]
			ontime7	8278.3999692202	Sum of GTIs [s]
			l1events	854995	Number of level 1 events

2.1.4 Events

	ccd 0	ccd 1	ccd 2	ccd 3	ccd 5	ccd 7		ccd 0	ccd 1	ccd 2	ccd 3	ccd 5	ccd 7
level 1 events	127314	130018	129879	136199	167224	164361	grade 0 events	34379	33308	35150	35543	12285	17225
rejected events	62258	64152	64950	70404	67315	65740		27%	25%	27%	26%	7%	10%
rejected %	48%	49%	50%	51%	40%	39%	grade 1 events	196	192	261	270	186	141
								0%	0%	0%	0%	0%	0%
							grade 2 events	11766	13063	11087	11396	37204	21510
								9%	10%	8%	8%	22%	13%
							grade 3 events	4306	4310	4383	4420	3769	8725
								3%	3%	3%	3%	2%	5%
							grade 4 events	4313	4308	4506	4586	3608	8505
								3%	3%	3%	3%	2%	5%
							grade 5 events	3741	3903	3618	4069	8220	10036
								2%	3%	2%	2%	4%	6%
							grade 6 events	10292	10877	9803	9850	43043	42656
								8%	8%	7%	7%	25%	25%
							grade 7 events	58321	60057	61071	66065	58909	55563
								45%	46%	47%	48%	35%	33%

2.2 Compared Parameters

Parameter	Planned	Actual	Parameter	Planned	Actual
Instrument	ACIS	ACIS	Obspar format version number	7	7
Detector	ACIS-012357	ACIS-012357	Obspar file type	PREDICTED	ACTUAL
Grating	NONE	NONE	Obspar update status	NONE	UPDATED
Data mode	FAINT	FAINT	Number of optional ACIS chips dropped	0	0
Observation mode	SECONDARY	SECONDARY	On-chip summing requested	N	N
[deg] Pointing RA	0	78.97281052603319	Subarray requested	NONE	NONE
[deg] Pointing Dec	0	-36.01838240946127	Alternating exposures requested	N	N
[deg] Pointing Roll	0.0	186.9071257756266	[s] Primary exposure time	3.2	3.2
[mm] SIM focus pos	-1.429586	-1.428180813131781			
[mm] SIM defocus	0.1037507710433287	0.1051558262725154			
[mm] SIM translation stage pos	250.455976	250.466033080201			
[mm] SIM translation stage offset	0	-0.01005468664627074			
[s] Observation start time (MET)	392083200.028992	392083199.00398			
Observation start date	2010-06-05T00:00:00	2010-06-04T23:59:59			
[s] Observation end time (MET)	392093380.329511	392093379.3045			
Observation end date	2010-06-05T02:49:40	2010-06-05T02:49:39			
Read mode	TIMED	TIMED			

2.3 Star Slots

2.4 FID Slots

A Summary

A.1 Status

V&V Scientist	Jen Lauer
V&V Date (YYYY-MM-DD)	2012.07.03
V&V Edition	1
V&V Disposition and Status	OK
V&V Charge Time	8.2783999692202

A.2 Comments