

# V&V Reference Report

## L2 ASCDS Version : 8.4.3

Observation 55560 - L2 Version 2  
Chandra X-Ray Center

L2 Processing Date : Feb 6 2012

## Contents

<b>1</b>	<b>Front</b>	<b>2</b>
<b>2</b>	<b>OBI</b>	<b>3</b>
2.1	OBI . . . . .	3
2.1.1	Images . . . . .	3
2.1.2	Bias . . . . .	3
2.1.3	Parameters . . . . .	4
2.1.4	Events . . . . .	4
2.2	Compared Parameters . . . . .	5
2.3	Star Slots . . . . .	6
2.4	FID Slots . . . . .	6
<b>A</b>	<b>Summary</b>	<b>7</b>
A.1	Status . . . . .	7
A.2	Comments . . . . .	7

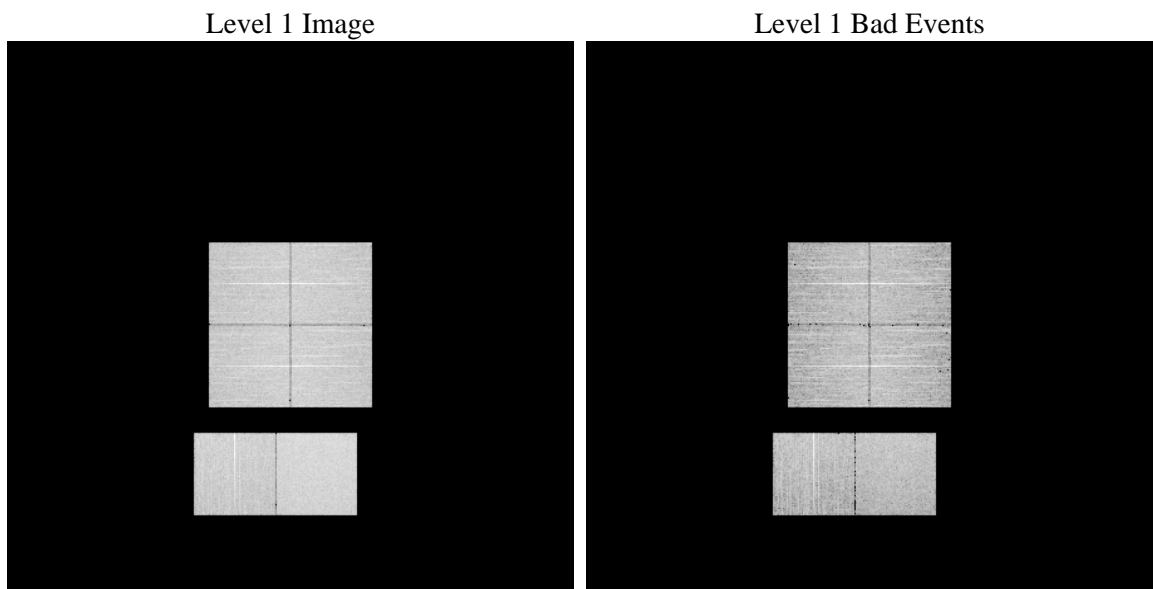
# 1 Front

seq_num	&#160	Sequence number
obs_id	55560	Observation id
title	ACIS-012367 diagnostics	Proposal title
observer	CHANDRA engineering request/realtime commanding	Principal investig
object	&#160	Source name
dtcycle	0	&#160
cycle	P	events from which exps? Prim/Second/Both
ra_targ	0.0	Observer's specified target RA [deg]
dec_targ	0.0	Observer's specified target Dec [deg]
ra_nom	177.03052106937	Nominal RA [deg]
dec_nom	-24.992177669413	Nominal Dec [deg]
roll_nom	342.8921690227	Nominal Roll [deg]
revision	2	Processing version of data
ontime	8284.7999691963	Sum of GTIs [s]
livetime	8179.8928434787	Livetime [s]
ontime0	8284.7999691963	Sum of GTIs [s]
ontime1	8284.7999691963	Sum of GTIs [s]
ontime2	8284.7999691963	Sum of GTIs [s]
ontime3	8284.7999691963	Sum of GTIs [s]
ontime6	8284.7999691963	Sum of GTIs [s]
ontime7	8284.7999691963	Sum of GTIs [s]
l2events	326022	Number of level 2 events

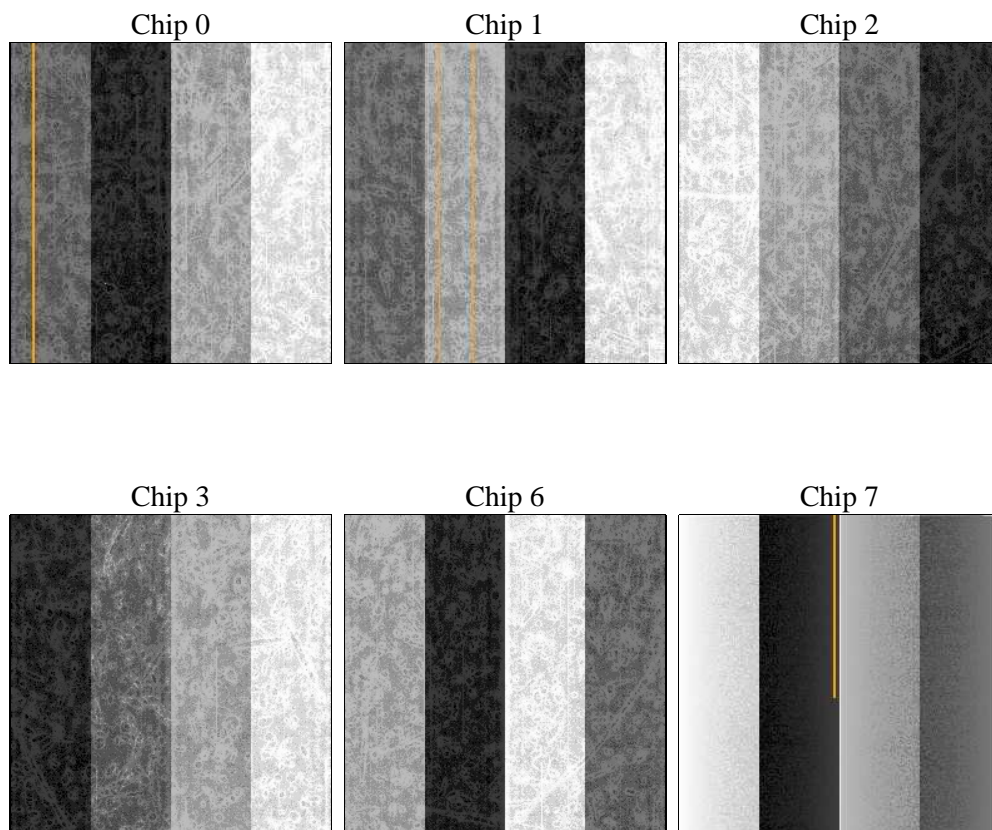
## 2 OBI

### 2.1 OBI

#### 2.1.1 Images



#### 2.1.2 Bias



### 2.1.3 Parameters

obi_num	0	Obi number	sched_exp_time	0.0	[s] Scheduled observation exposure time
ascdsver	8.4.3	Processing system revision	ontime	8284.7999691963	Sum of GTIs [s]
caldsver	4.4.7	&#160	ontime0	8284.7999691963	Sum of GTIs [s]
date	2012-02-06T23:38:36	Date and time of file creation	ontime1	8284.7999691963	Sum of GTIs [s]
revision	2	Processing version of data	ontime2	8284.7999691963	Sum of GTIs [s]
			ontime3	8284.7999691963	Sum of GTIs [s]
			ontime6	8284.7999691963	Sum of GTIs [s]
			ontime7	8284.7999691963	Sum of GTIs [s]
			l1events	711202	Number of level 1 events

### 2.1.4 Events

	ccd 0	ccd 1	ccd 2	ccd 3	ccd 6	ccd 7		ccd 0	ccd 1	ccd 2	ccd 3	ccd 6	ccd 7
level 1 events	110009	111216	112664	115748	115876	145689	grade 0 events	27300	26721	28072	28239	27452	13925
rejected events	58172	59124	60688	63356	62501	62616		24%	24%	24%	24%	23%	9%
rejected %	52%	53%	53%	54%	53%	42%	grade 1 events	149	152	189	196	152	139
								0%	0%	0%	0%	0%	0%
							grade 2 events	9533	10232	9127	9073	10026	18071
								8%	9%	8%	7%	8%	12%
							grade 3 events	3600	3383	3576	3652	3526	7294
								3%	3%	3%	3%	3%	5%
							grade 4 events	3416	3450	3526	3609	3444	7191
								3%	3%	3%	3%	2%	4%
							grade 5 events	3645	3671	3445	3990	3754	9514
								3%	3%	3%	3%	3%	6%
							grade 6 events	8009	8328	7698	7846	8948	36629
								7%	7%	6%	6%	7%	25%
							grade 7 events	54357	55279	57031	59143	58574	52926
								49%	49%	50%	51%	50%	36%

## 2.2 Compared Parameters

Parameter	Planned	Actual	Parameter	Planned	Actual
Instrument	ACIS	ACIS	Obspar format version number	7	7
Detector	ACIS-012367	ACIS-012367	Obspar file type	PREDICTED	ACTUAL
Grating	NONE	NONE	Obspar update status	NONE	UPDATED
Data mode	FAINT	FAINT	Number of optional ACIS chips dropped	0	0
Observation mode	SECONDARY	SECONDARY	On-chip summing requested	N	N
[deg] Pointing RA	0	177.0305210693669	Subarray requested	NONE	NONE
[deg] Pointing Dec	0	-24.99217766941333	Alternating exposures requested	N	N
[deg] Pointing Roll	0.0	342.8921690226962	[s] Primary exposure time	3.2	3.2
[mm] SIM focus pos	-1.429586	-1.428180813131781			
[mm] SIM defocus	0.1037507710433287	0.1051558262725154			
[mm] SIM translation stage pos	250.455976	250.466033080201			
[mm] SIM translation stage offset	0	-0.01005468664627074			
[s] Observation start time (MET)	417440541.033341	417440540.00834			
Observation start date	2011-03-25T11:42:21	2011-03-25T11:42:20			
[s] Observation end time (MET)	417452166.583944	417452165.55894			
Observation end date	2011-03-25T14:56:07	2011-03-25T14:56:05			
Read mode	TIMED	TIMED			

## 2.3 Star Slots

## 2.4 FID Slots

## **A Summary**

### **A.1 Status**

V&V Scientist	Jen Lauer
V&V Date (YYYY-MM-DD)	2012.02.09
V&V Edition	1
V&V Disposition and Status	OK
V&V Charge Time	8.2847999691963

### **A.2 Comments**