

V&V Reference Report

L2 ASCDS Version : 8.3.3.1

Observation 550 - L2 Version 6
Chandra X-Ray Center

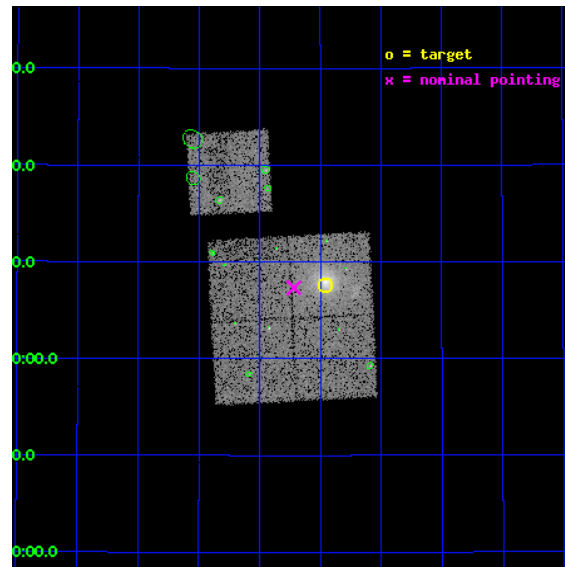
L2 Processing Date : Dec 9 2010

Contents

1	Front	2
2	OBI	3
2.1	OBI	3
2.1.1	Images	3
2.1.2	Bias	3
2.1.3	Parameters	4
2.1.4	Events	4
2.2	Compared Parameters	5
2.3	Aspect	6
2.4	Star Slots	9
2.4.1	Slot 3	9
2.4.2	Slot 4	10
2.4.3	Slot 5	11
2.4.4	Slot 6	12
2.4.5	Slot 7	13
2.5	FID Slots	14
2.5.1	Slot 0	14
2.5.2	Slot 1	15
2.5.3	Slot 2	16
3	Point Sources	17
A	Summary	18
A.1	Status	18
A.2	Comments	18

1 Front

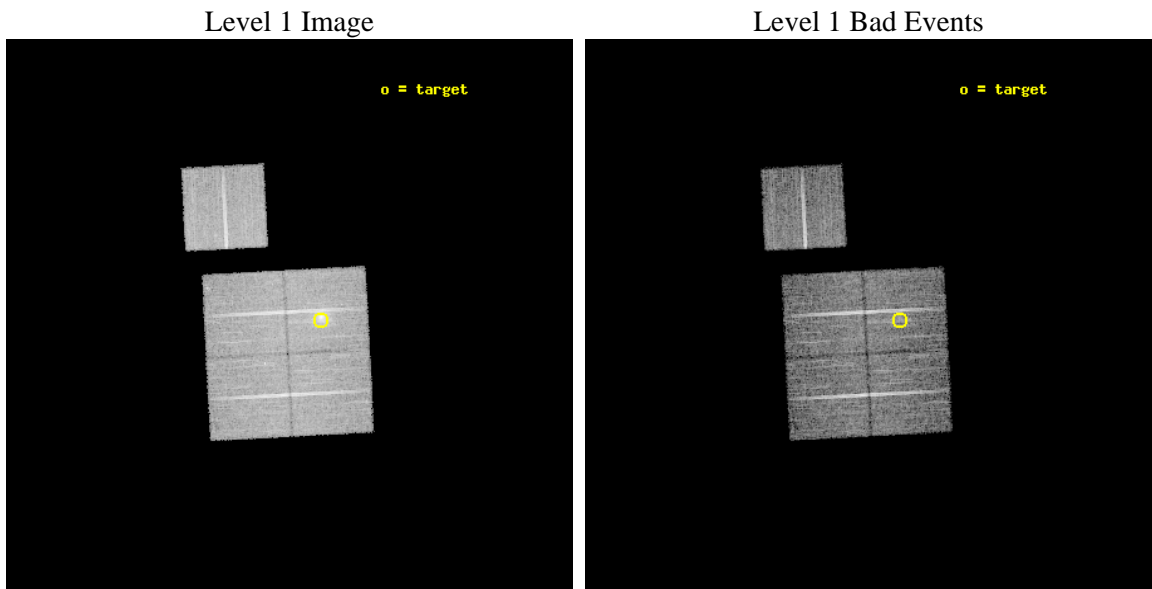
seq_num	800058	Sequence number
obs_id	550	Observation id
title	DETERMINATION OF H0/Q0	Proposal title
observer	DR. LEON VANSPEYBROECK	Principal investigator
object	A2261	Source name
dtcycle	0	
cycle	P	events from which exps? Prim/Second/Both
ra_targ	260.615	Observer's specified target RA
dec_targ	32.127	Observer's specified target Dec
ra_nom	260.6795258005	Nominal RA
dec_nom	32.121947015225	Nominal Dec
roll_nom	357.02322391522	Nominal Roll
revision	6	Processing version of data
ontime	9177.1499793306	Sum of GTIs [s]
livetime	9060.943380476	Livetime [s]
ontime0	9177.3141393289	Sum of GTIs [s]
ontime1	9177.2730993256	Sum of GTIs [s]
ontime2	9173.9911091104	Sum of GTIs [s]
ontime3	9177.1499793306	Sum of GTIs [s]
ontime6	9177.1910193264	Sum of GTIs [s]
l2events	55668	Number of level 2 events



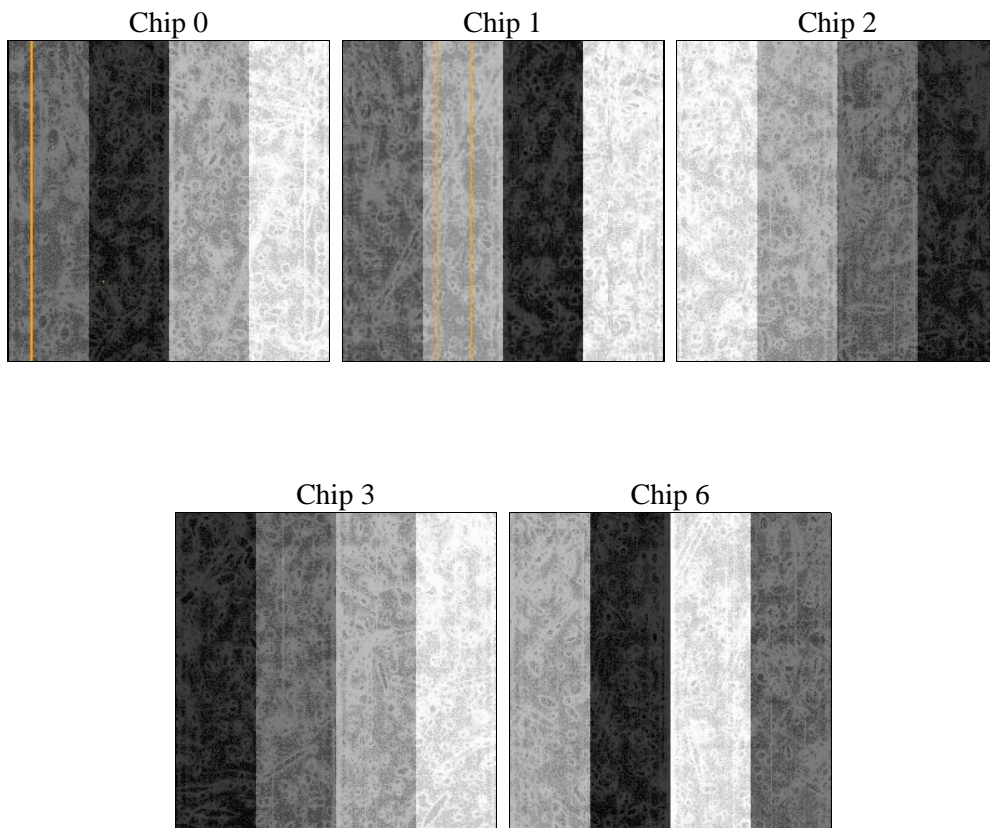
2 OBI

2.1 OBI

2.1.1 Images



2.1.2 Bias



2.1.3 Parameters

obi_num	0	Obi number	sched_exp_time	10000.000000	Scheduled observation exposure time
ascdsver	8.3.3.1	ASCDS version number	ontime	9177.1499793306	Sum of GTIs [s]
caldsver	4.4.0	 	ontime0	9177.3141393289	Sum of GTIs [s]
date	2010-12-09T20:21:56	Date and time of file creation	ontime1	9177.2730993256	Sum of GTIs [s]
revision	4	Processing version of data	ontime2	9173.9911091104	Sum of GTIs [s]
			ontime3	9177.1499793306	Sum of GTIs [s]
			ontime6	9177.1910193264	Sum of GTIs [s]
			l1events	427221	Number of level 1 events

2.1.4 Events

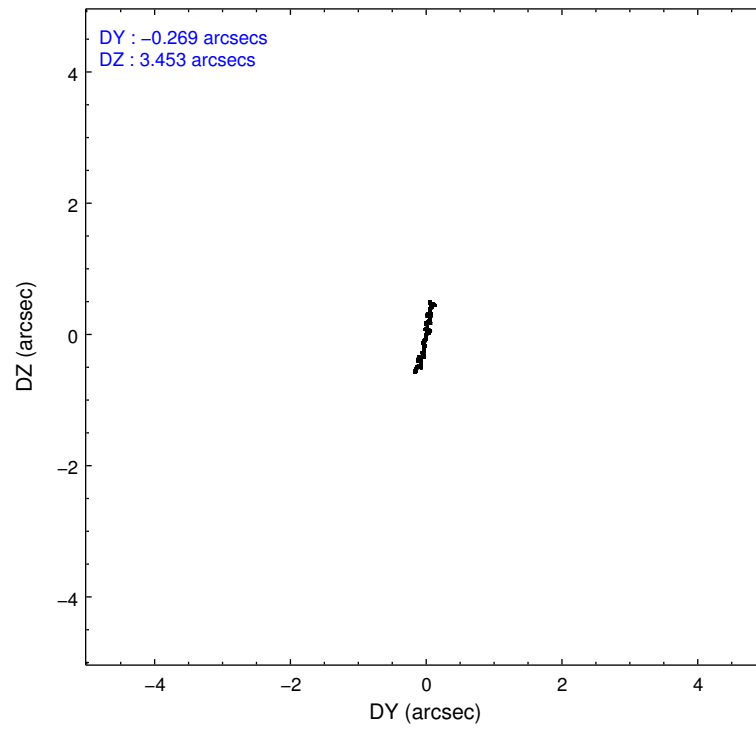
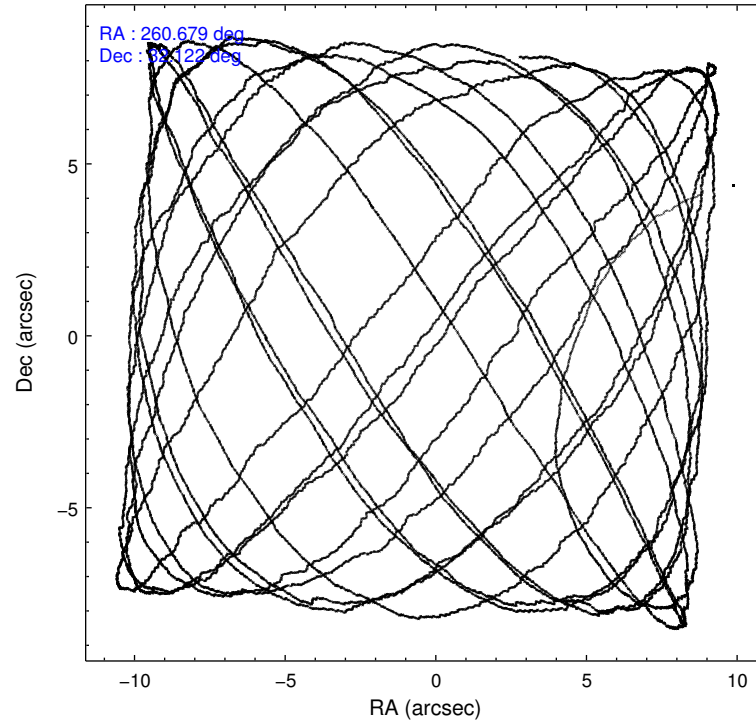
	ccd 0	ccd 1	ccd 2	ccd 3	ccd 6
level 1 events	80624	79817	83344	95796	87640
rejected events	70772	69686	74390	74957	77721
rejected %	87%	87%	89%	78%	88%

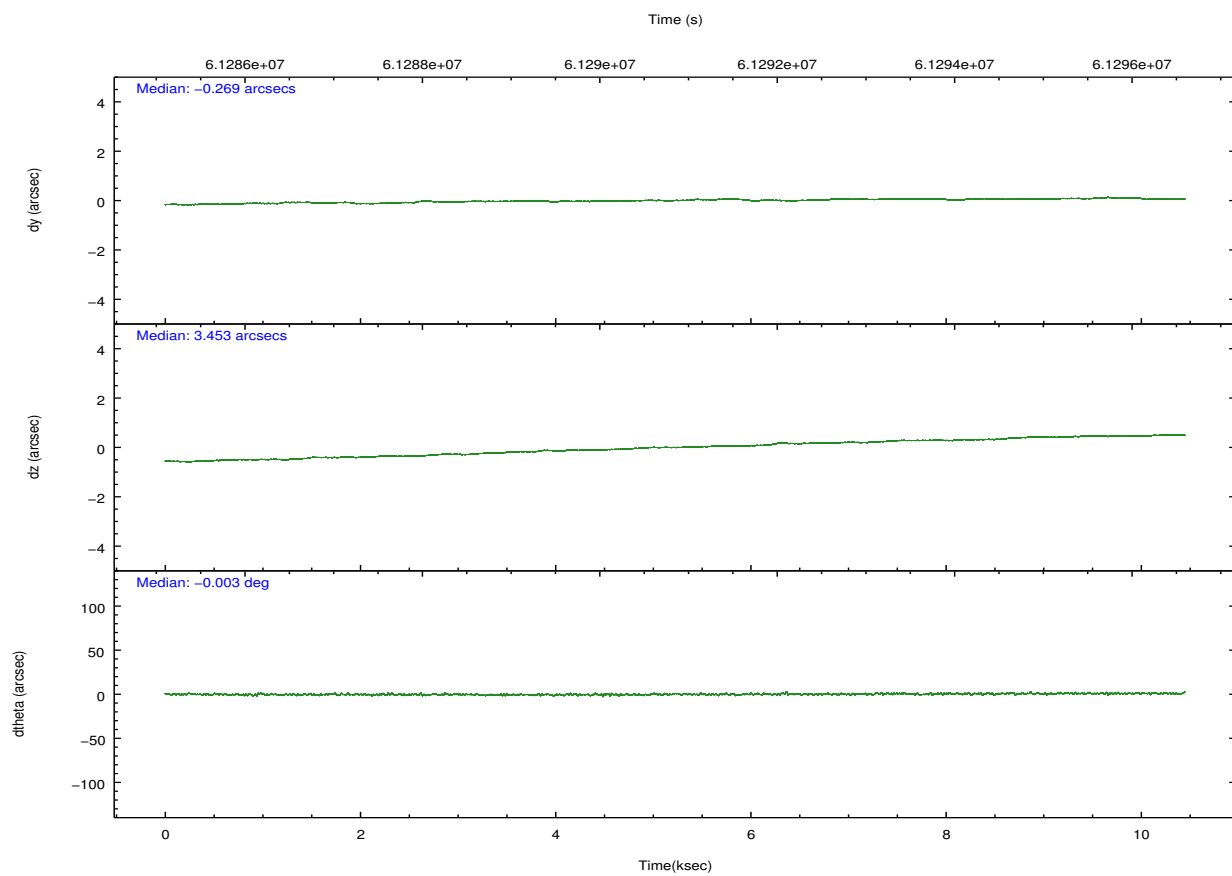
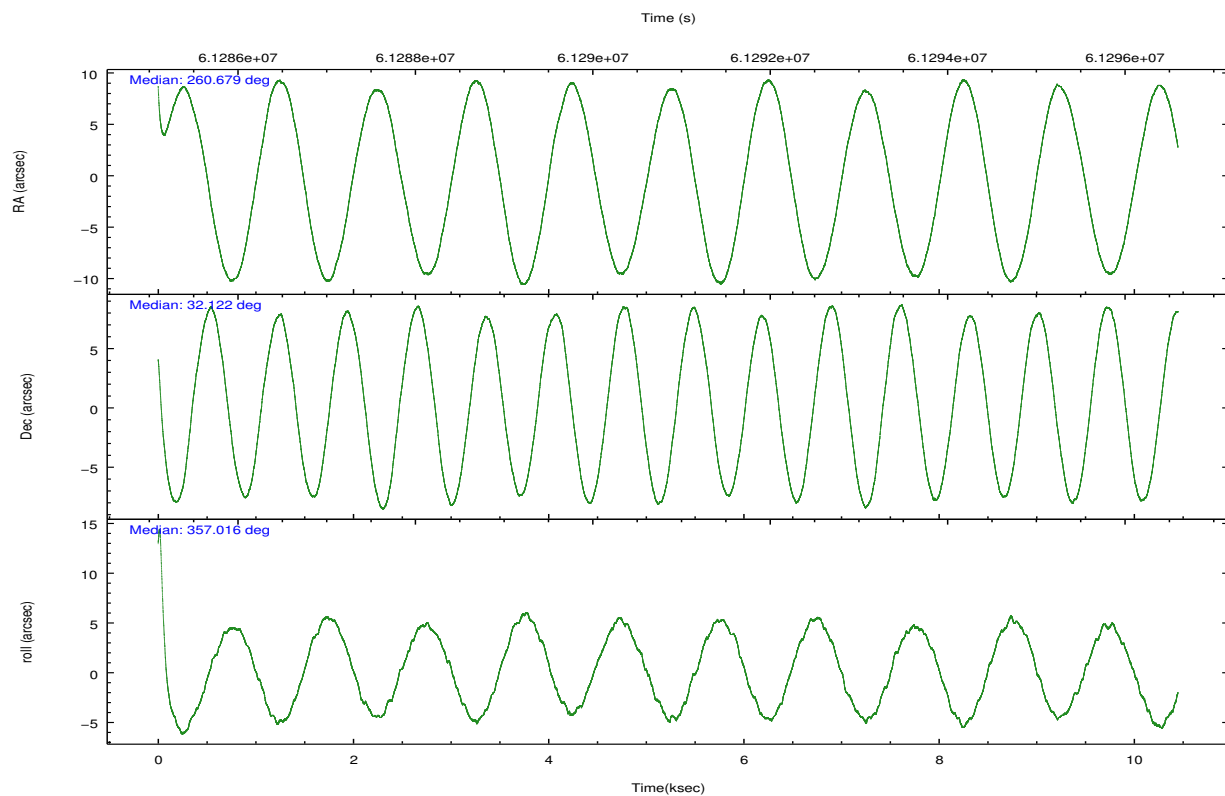
	ccd 0	ccd 1	ccd 2	ccd 3	ccd 6
grade 0 events	2501	2508	2267	9580	2268
	3%	3%	2%	10%	2%
grade 1 events	12	20	22	36	18
	0%	0%	0%	0%	0%
grade 2 events	4056	4050	3658	7302	4206
	5%	5%	4%	7%	4%
grade 3 events	643	663	506	683	534
	0%	0%	0%	0%	0%
grade 4 events	613	651	517	756	522
	0%	0%	0%	0%	0%
grade 5 events	1587	1701	1336	1511	1667
	1%	2%	1%	1%	1%
grade 6 events	2045	2266	2008	2524	2391
	2%	2%	2%	2%	2%
grade 7 events	69167	67958	73030	73404	76034
	85%	85%	87%	76%	86%

2.2 Compared Parameters

Parameter	Planned	Actual	Parameter	Planned	Actual
Instrument	ACIS	ACIS	Obspar format version number	6	6
Detector	ACIS-01236	ACIS-01236	Obspar file type	PREDICTED	ACTUAL
Grating	NONE	NONE	Obspar update status	NONE	UPDATED
Data mode	VFAINT	VFAINT	Number of optional ACIS chips dropped	0	0
Observation mode	POINTING	POINTING	On-chip summing requested	N	N
Pointing RA	260.650137	260.6795258004957	Subarray requested	NONE	NONE
Pointing Dec	32.109661	32.12194701522468	Alternating exposures requested	N	N
Pointing Roll	356.830147	357.0232239152176	Primary exposure time	0.000000	3.2
SIM focus pos (mm)	-0.782348	-0.7809083437167272			
SIM defocus (mm)	0	0.001439871863259334			
SIM translation stage pos (mm)	-225.779963	-225.785514080088			
SIM translation stage offset (mm)	-7.8125	-7.806938922841681			
Observation start time	61286070.184000	61284644.870648			
Observation start date	1999-12-11T07:53:26	1999-12-11T07:30:44			
Observation end time	61296070.184000	61296457.996076			
Observation end date	1999-12-11T10:40:06	1999-12-11T10:47:37			
Read mode	TIMED	TIMED			

2.3 Aspect



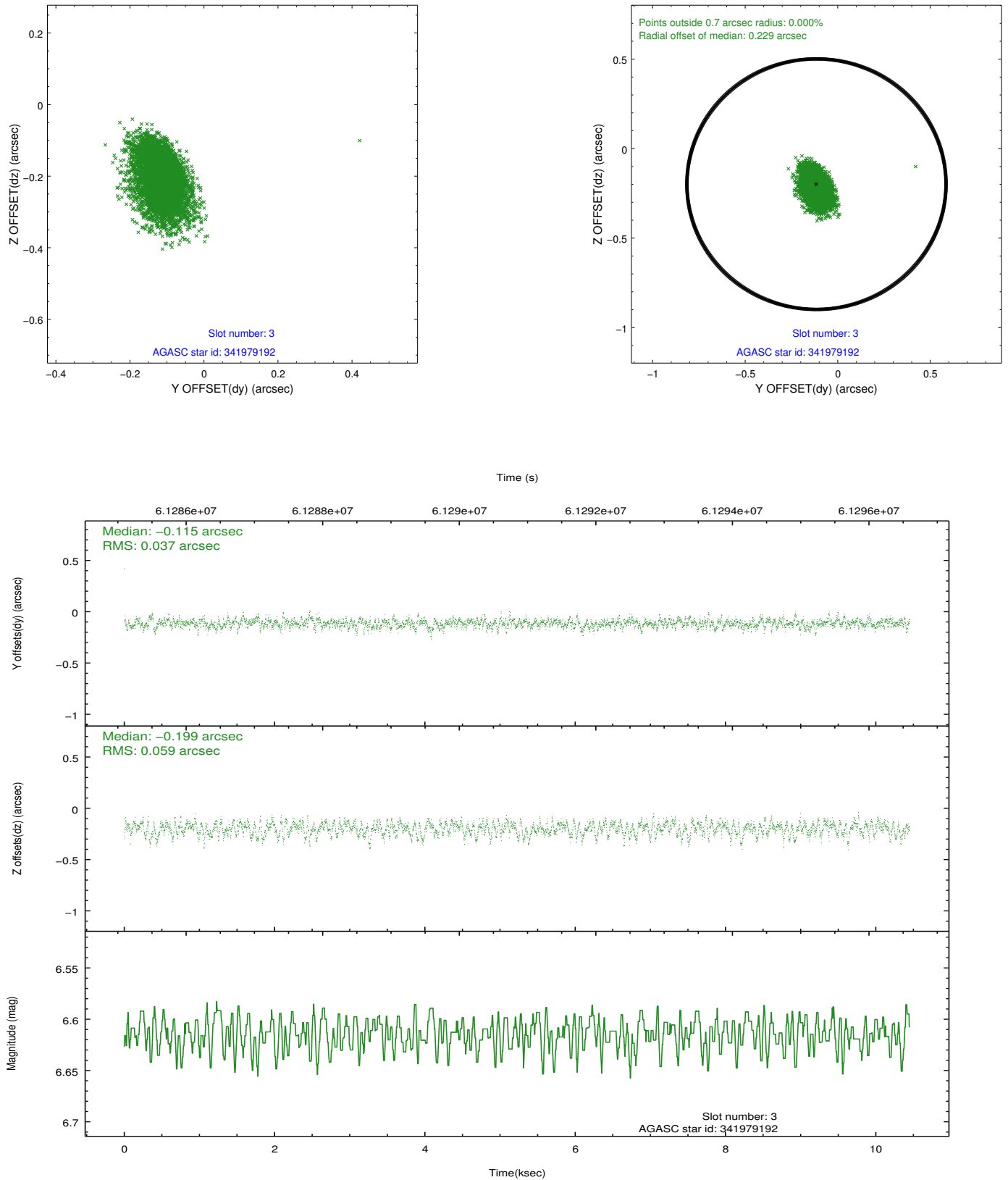


Slot Statistics

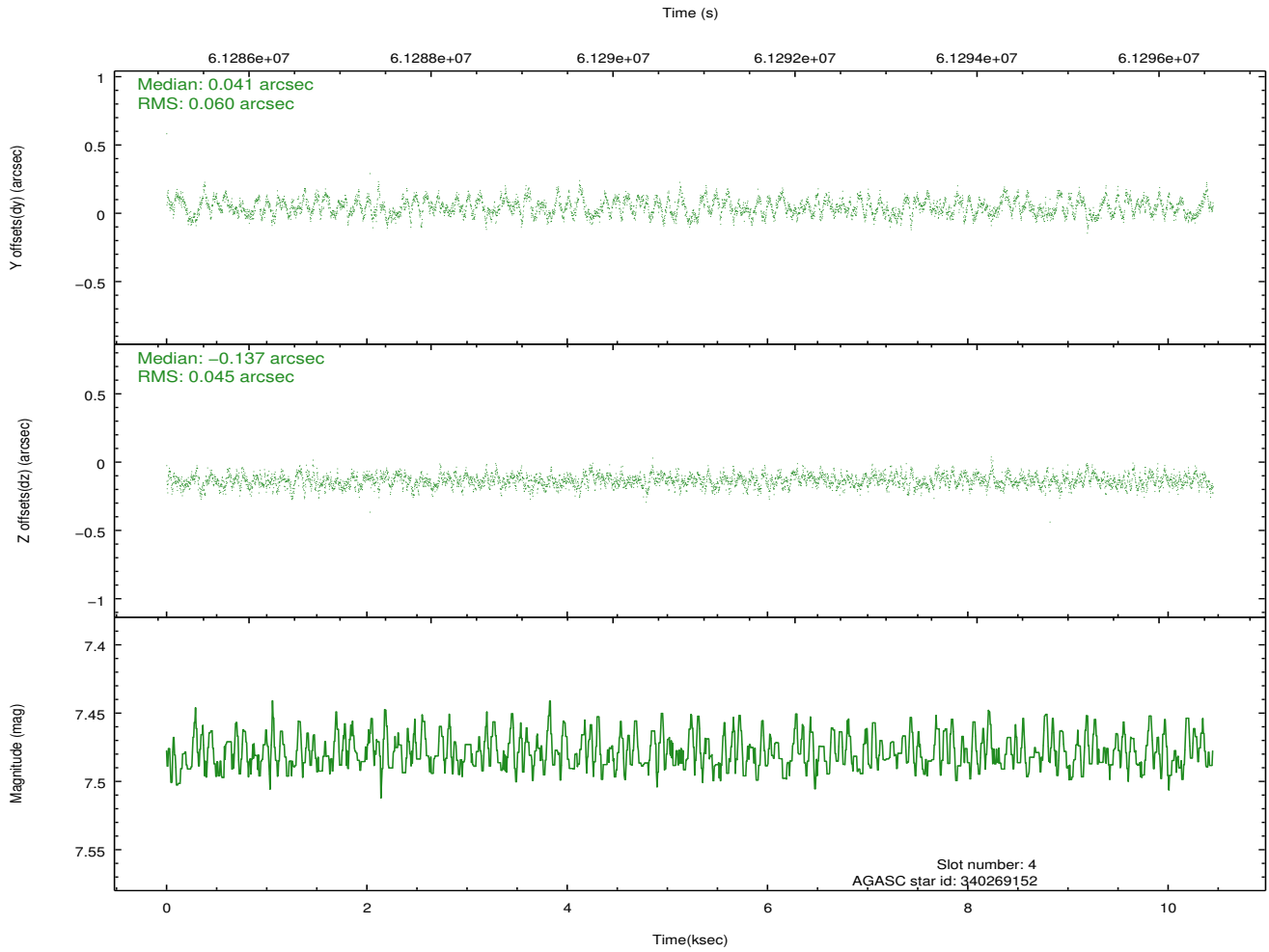
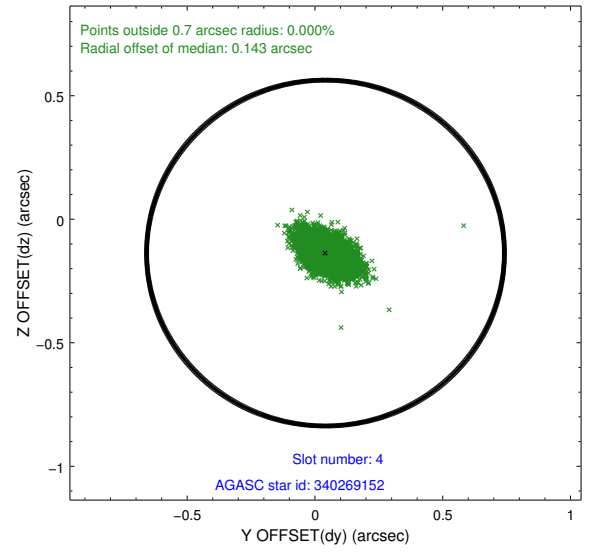
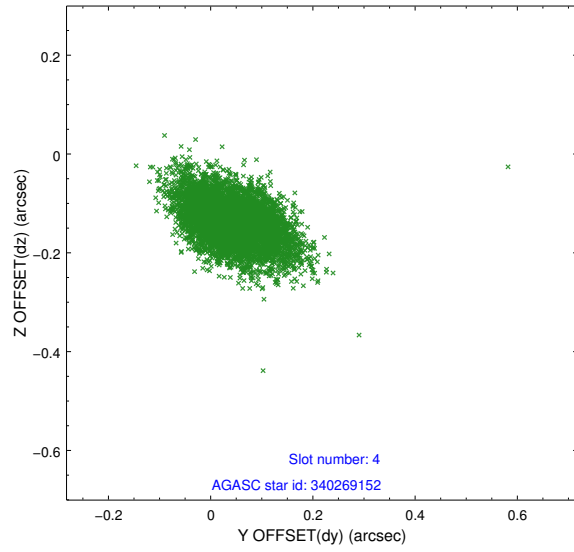
slot	status	id	mag	n_pts	med_dy	med_dz	dr1	dr2	ra	dec	mean_y	mean_z
0	FID	ACIS-I-3	7.42	5098	0.029	0.161	0.010	0.017	0.000000	0.000000	57.49	-1120.07
1	FID	ACIS-I-4	7.21	5097	-0.049	-0.074	0.008	0.014	0.000000	0.000000	2159.48	913.61
2	FID	ACIS-I-5	7.22	5098	-0.079	-0.018	0.009	0.014	0.000000	0.000000	-1807.85	910.68
3	GUIDE	341979192	6.61	5098	-0.115	-0.199	0.072	0.125	261.163651	32.670375	1442.32	2105.38
4	GUIDE	340269152	7.48	5097	0.041	-0.137	0.079	0.130	260.189436	32.674396	-1505.84	1955.98
5	GUIDE	341448608	9.04	5093	-0.114	0.119	0.080	0.134	261.269653	31.553508	2008.58	-1887.76
6	GUIDE	340272152	9.25	5092	0.155	0.115	0.076	0.132	259.948756	32.115258	-2135.59	-91.59
7	GUIDE	339743944	9.90	5093	0.033	0.108	0.117	0.189	260.826965	31.542869	655.05	-2006.60

2.4 Star Slots

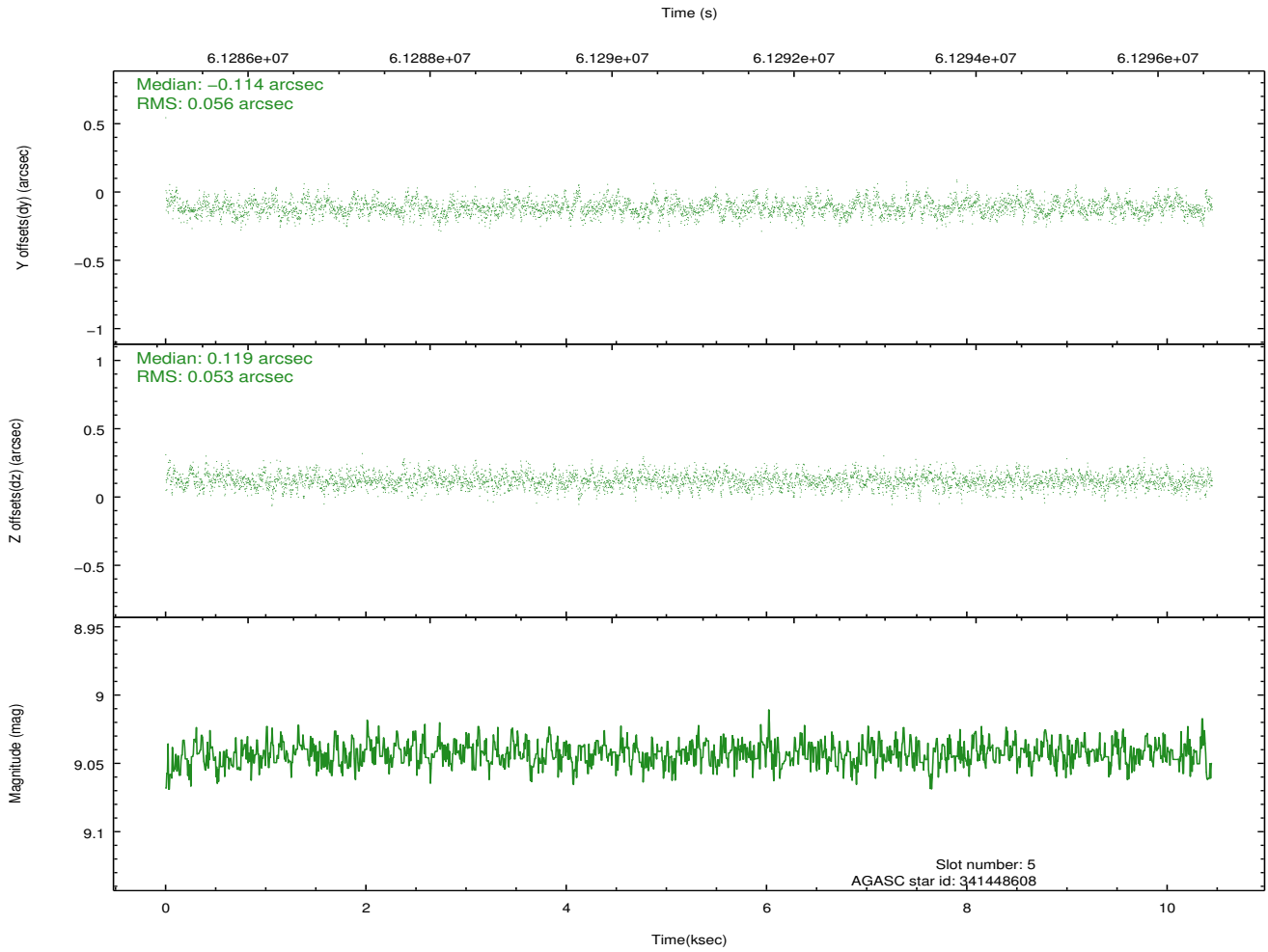
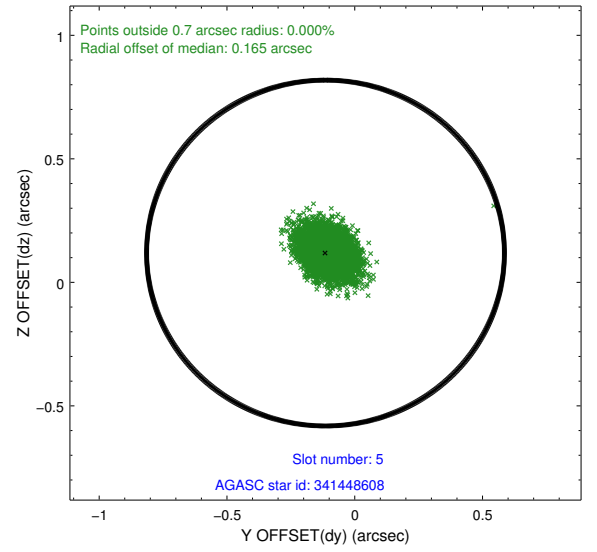
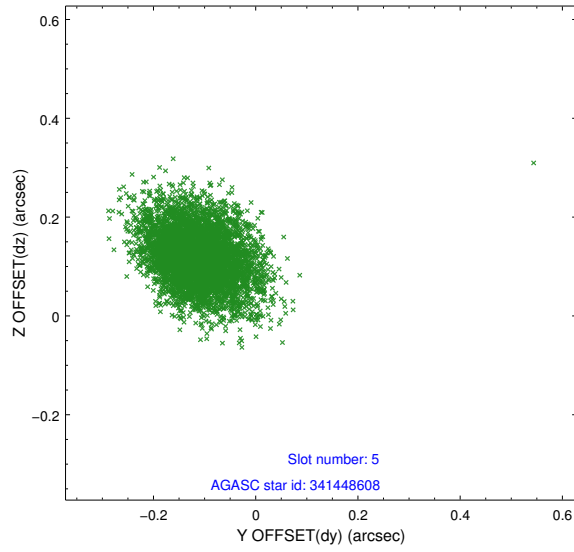
2.4.1 Slot 3



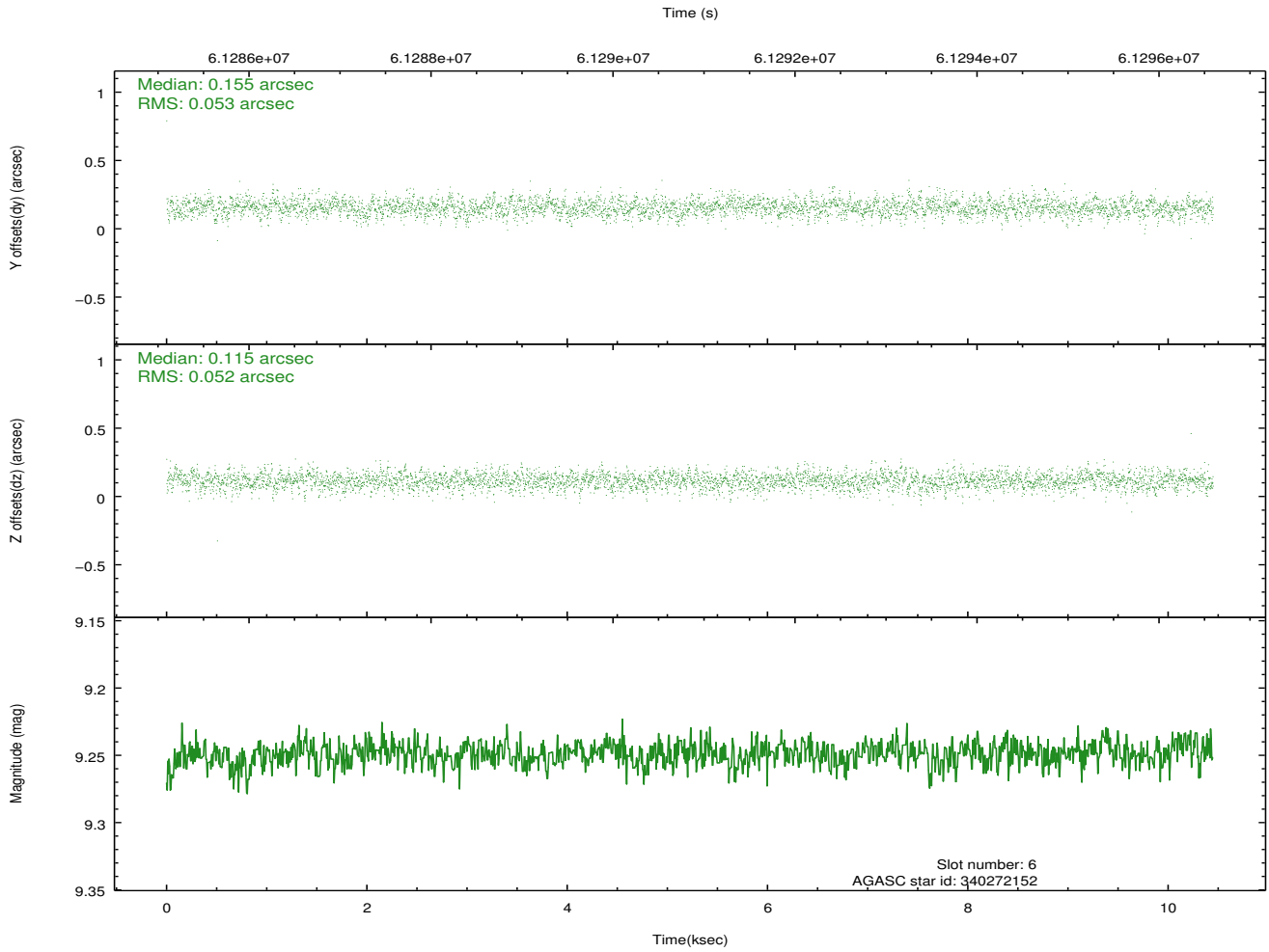
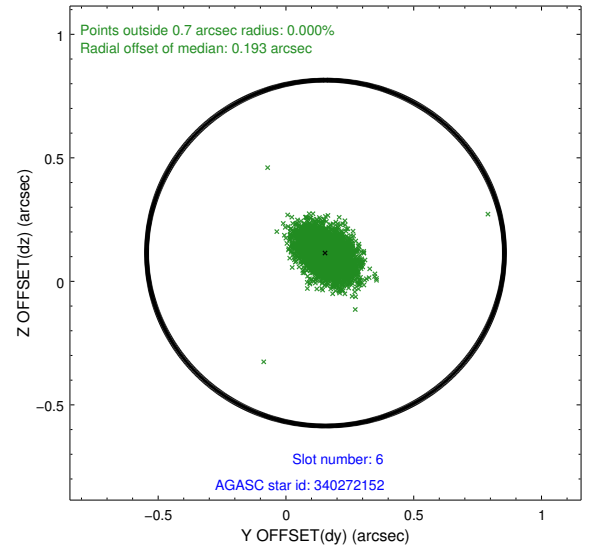
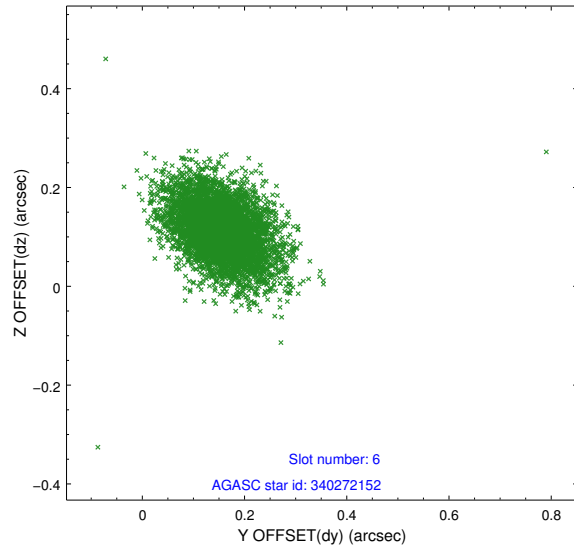
2.4.2 Slot 4



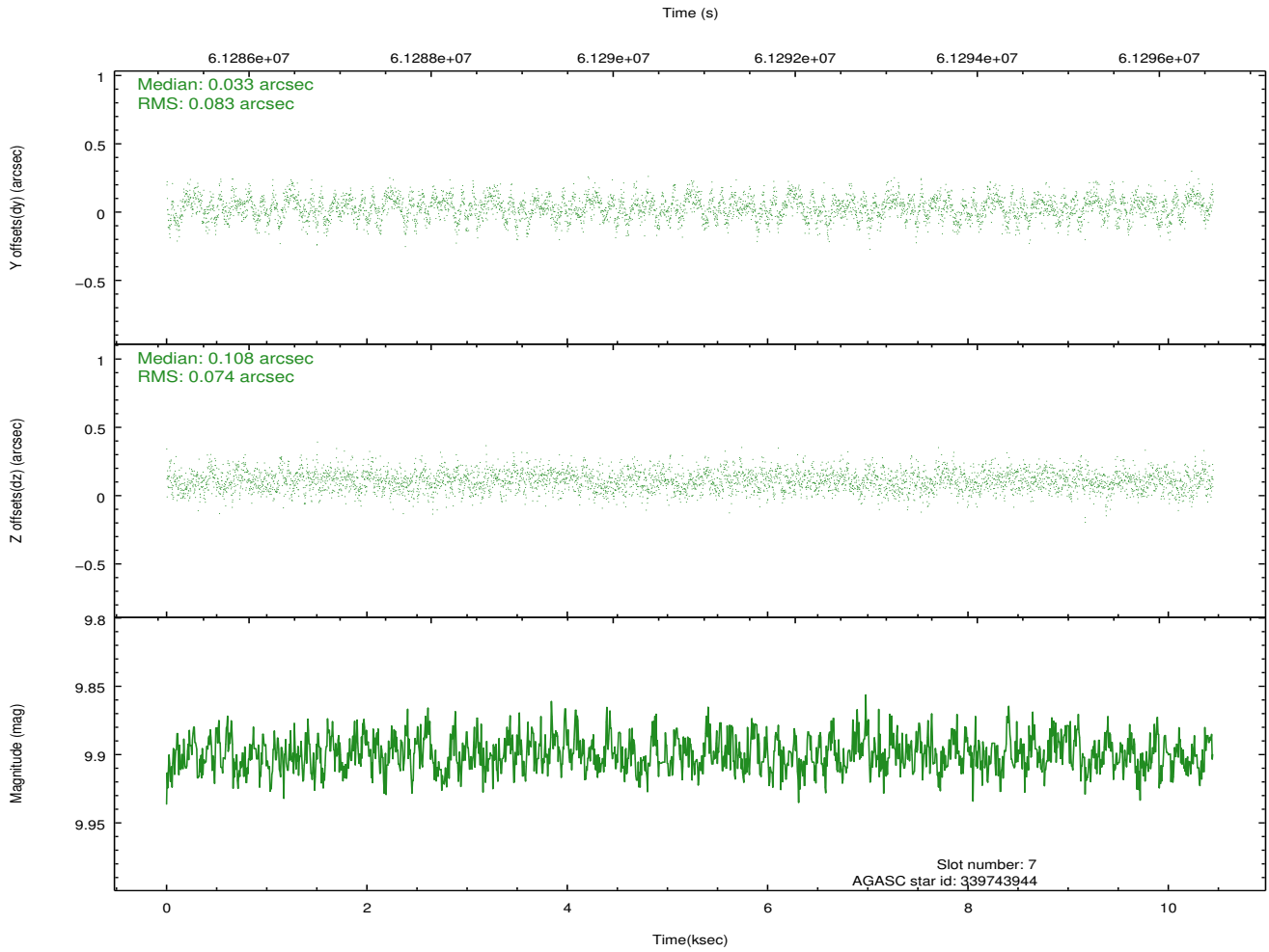
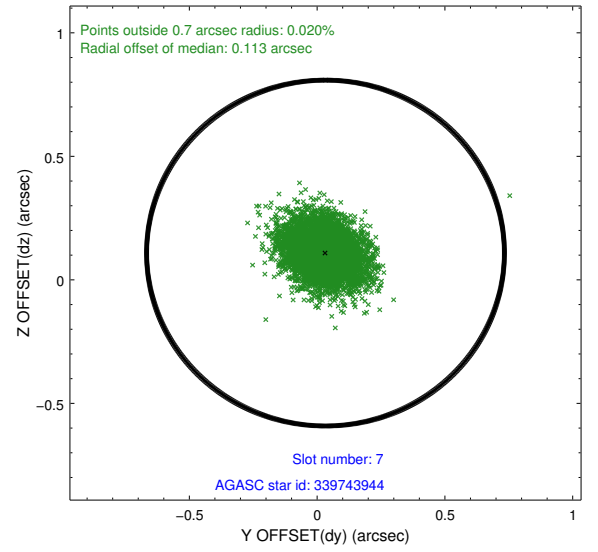
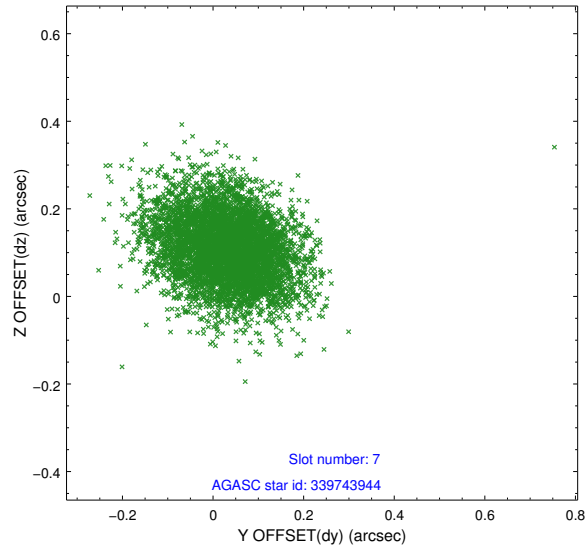
2.4.3 Slot 5



2.4.4 Slot 6

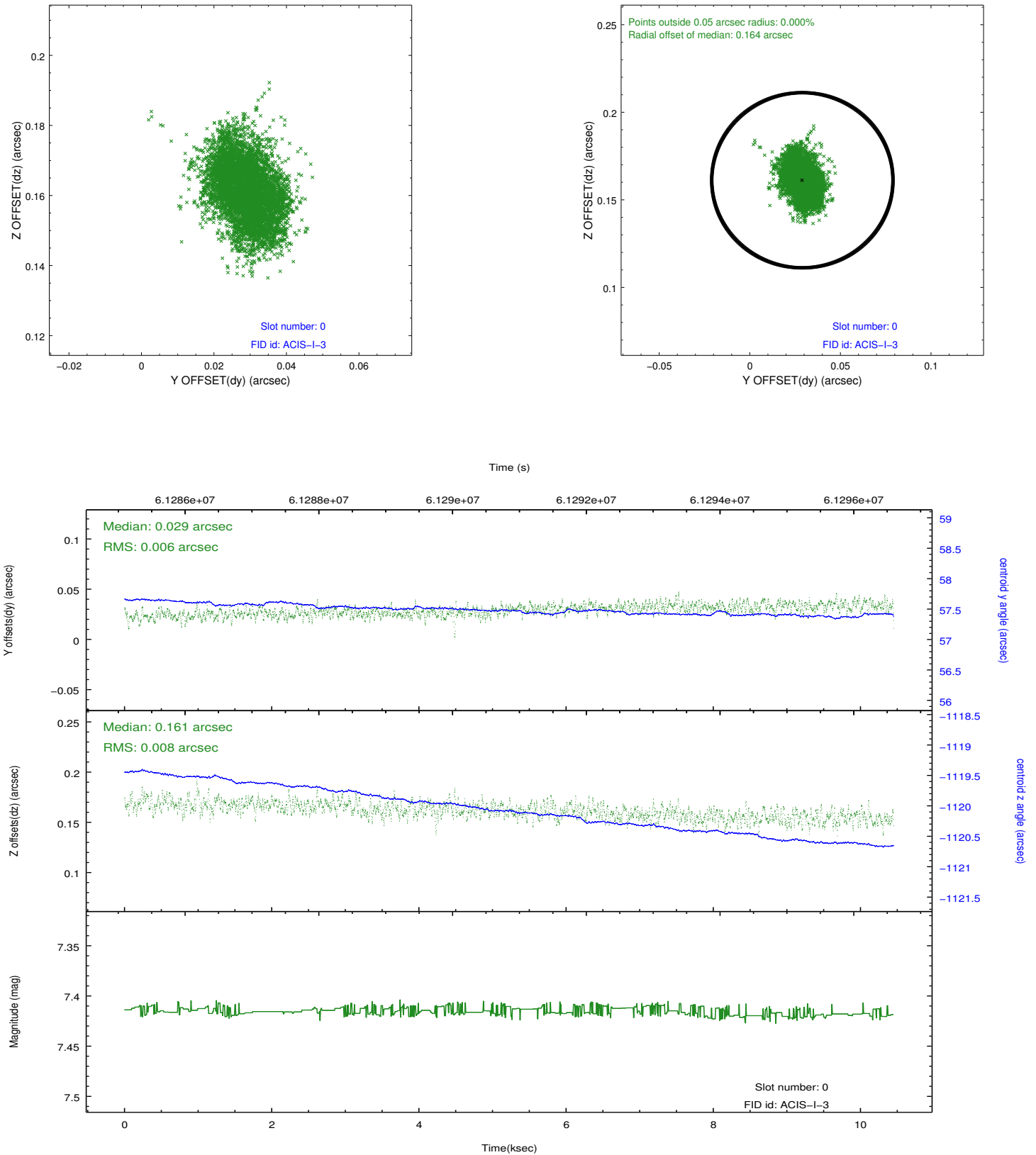


2.4.5 Slot 7

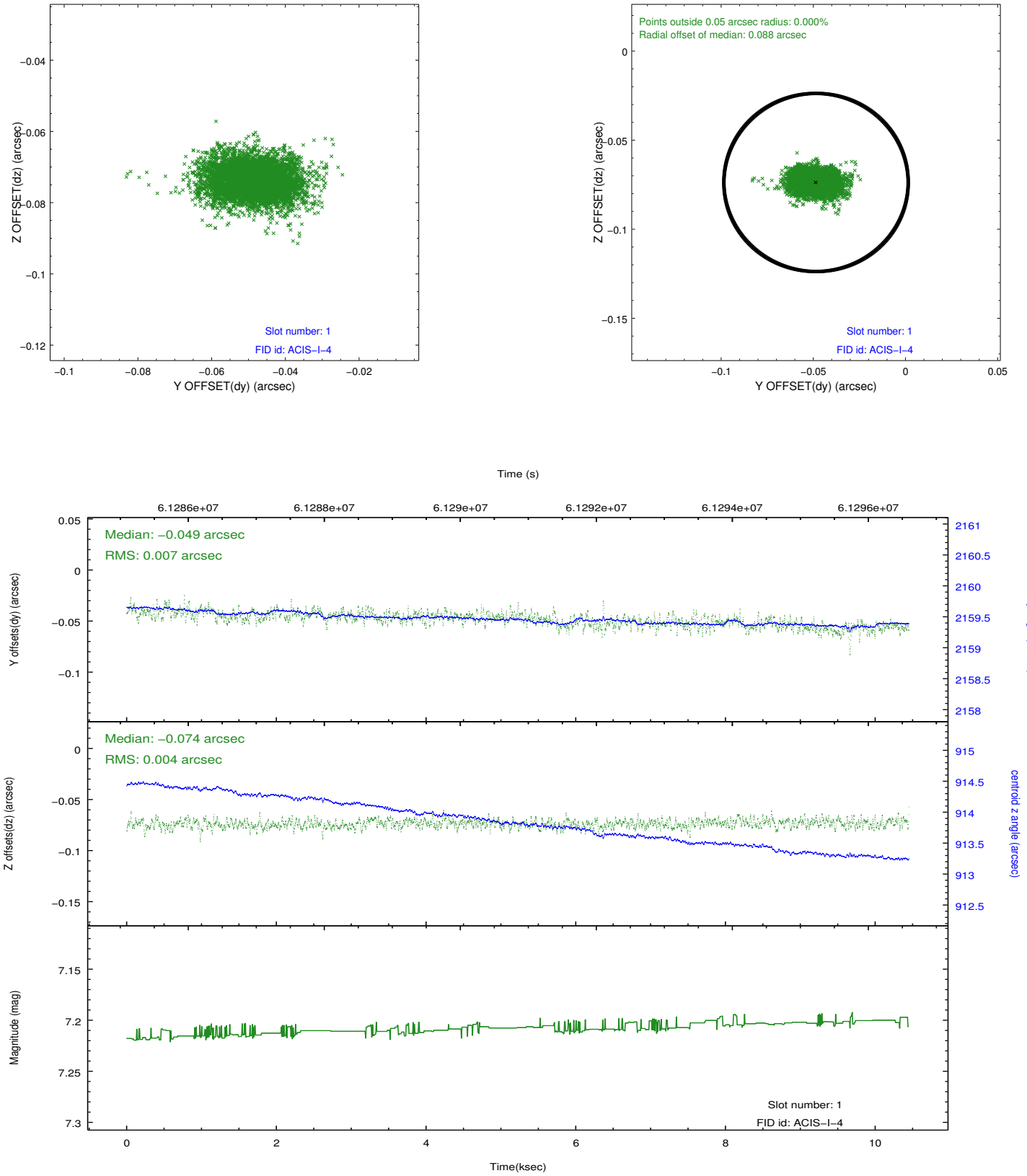


2.5 FID Slots

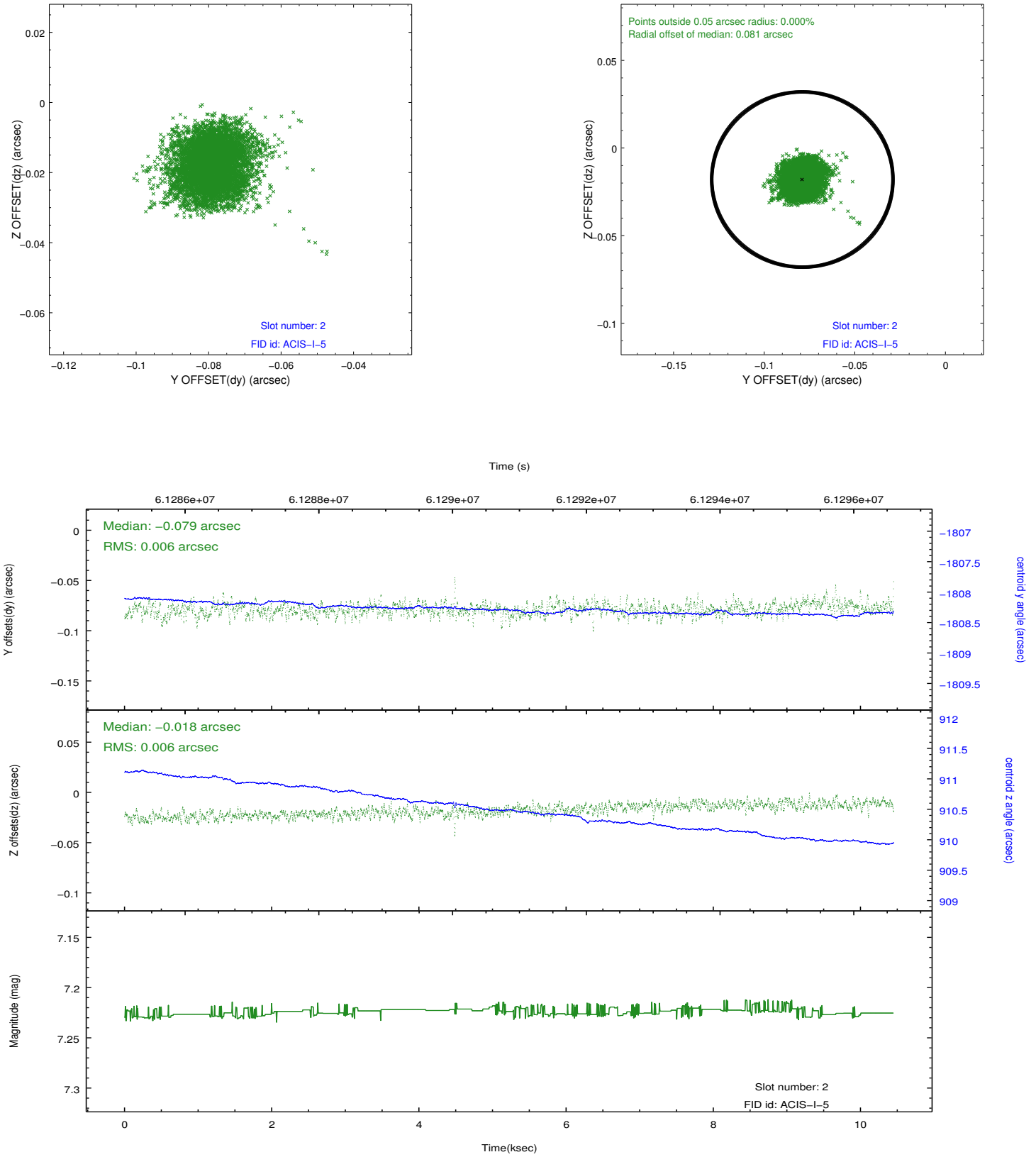
2.5.1 Slot 0



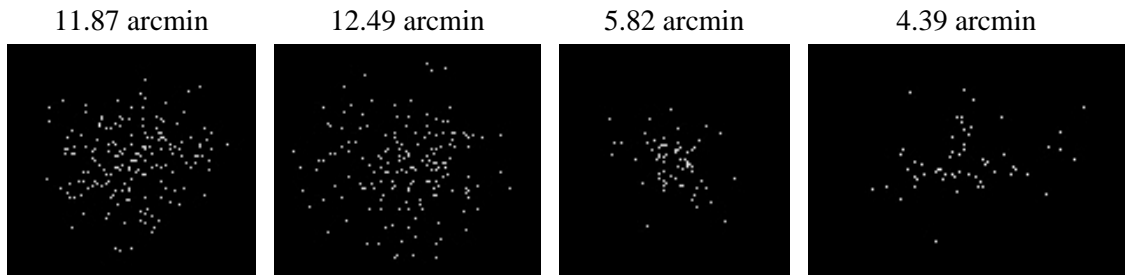
2.5.2 Slot 1



2.5.3 Slot 2



3 Point Sources



A Summary

A.1 Status

V&V Scientist	Beth Sundheim
V&V Date (YYYY-MM-DD)	2010.12.10
V&V Edition	1
V&V Disposition and Status	OK
V&V Charge Time	9.177

A.2 Comments

The focal plane temperature is approximately -110C during this observation. This reprocessing of the data applies no CTI correction because none is available for this temperature at present.

The ACIS CTI correction has not been calibrated at this temperature because it was early in the mission, and ACIS had not yet been lowered to the standard -119.7 C. Both front- and back-illuminated chips are affected.

The ACIS spectral response calibration is less accurate at these warmer temperatures than it is at -119.7 C. Users whose science objectives depend on the most accurate spectral response (ie: fitting line-rich spectra) may notice an effect. Users whose science objectives do not depend on the most accurate spectral response should not notice an effect.