

# V&V Reference Report

## L2 ASCDS Version : 8.5.1

Observation 54100 - L2 Version 1  
Chandra X-Ray Center

L2 Processing Date : Dec 14 2012

## Contents

<b>1</b>	<b>Front</b>	<b>2</b>
<b>2</b>	<b>OBI</b>	<b>3</b>
2.1	OBI . . . . .	3
2.1.1	Images . . . . .	3
2.1.2	Bias . . . . .	3
2.1.3	Parameters . . . . .	4
2.1.4	Events . . . . .	4
2.2	Compared Parameters . . . . .	5
2.3	Star Slots . . . . .	6
2.4	FID Slots . . . . .	6
<b>A</b>	<b>Summary</b>	<b>7</b>
A.1	Status . . . . .	7
A.2	Comments . . . . .	7

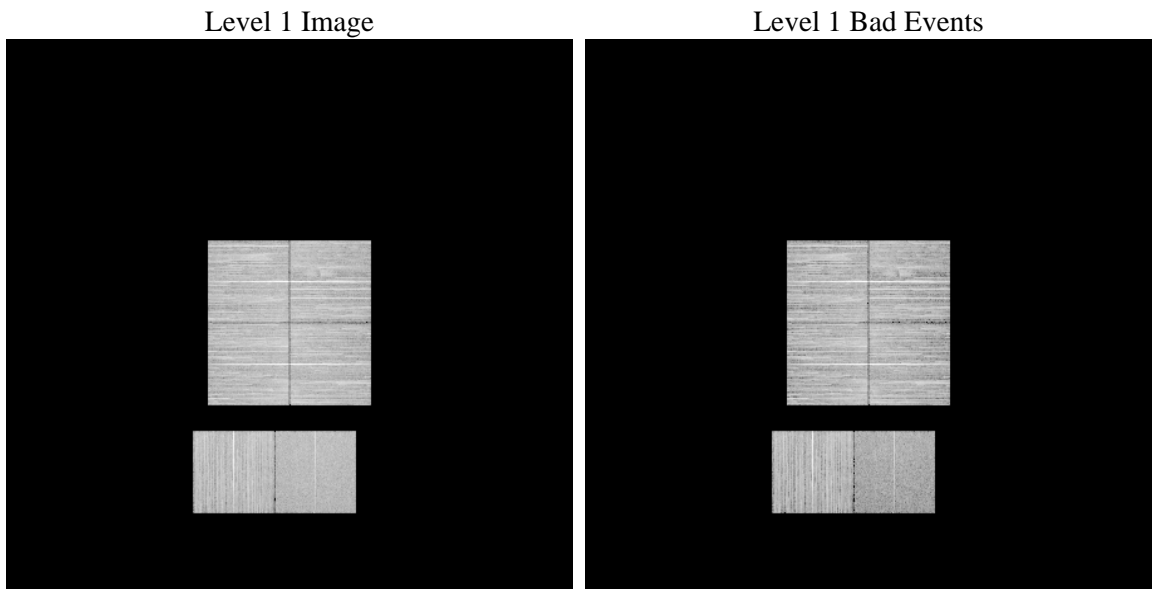
# 1 Front

seq_num	&#160	Sequence number
obs_id	54100	Observation id
title	ACIS-012367 diagnostics	Proposal title
observer	CHANDRA engineering request/realtime commanding	Principal investig
object	&#160	Source name
dtcycle	0	&#160
cycle	P	events from which exps? Prim/Second/Both
ra_targ	0.0	Observer's specified target RA [deg]
dec_targ	0.0	Observer's specified target Dec [deg]
ra_nom	334.1302032467	Nominal RA [deg]
dec_nom	26.372025792324	Nominal Dec [deg]
roll_nom	299.74508062774	Nominal Roll [deg]
revision	1	Processing version of data
ontime	8114.826187551	Sum of GTIs [s]
livetime	8012.0713722025	Livetime [s]
ontime0	8114.7851475477	Sum of GTIs [s]
ontime1	8114.7441075444	Sum of GTIs [s]
ontime2	8114.7030675411	Sum of GTIs [s]
ontime3	8114.8672275543	Sum of GTIs [s]
ontime6	8114.6620275378	Sum of GTIs [s]
ontime7	8114.826187551	Sum of GTIs [s]
l2events	226858	Number of level 2 events

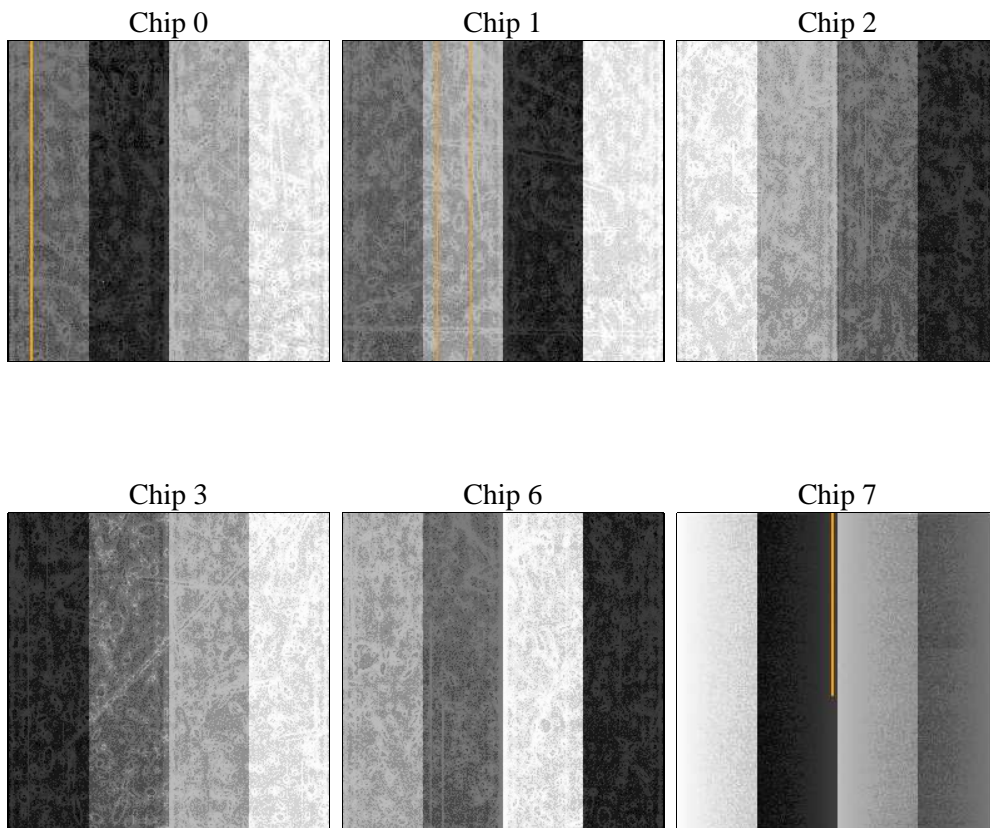
## 2 OBI

### 2.1 OBI

#### 2.1.1 Images



#### 2.1.2 Bias



### 2.1.3 Parameters

obi_num	0	Obi number	sched_exp_time	0.0	[s] Scheduled observation exposure time
ascdsver	8.5.1	Processing system revision	ontime	8114.826187551	Sum of GTIs [s]
caldsver	4.5.5	&#160	ontime0	8114.7851475477	Sum of GTIs [s]
date	2012-12-14T14:29:23	Date and time of file creation	ontime1	8114.7441075444	Sum of GTIs [s]
revision	1	Processing version of data	ontime2	8114.7030675411	Sum of GTIs [s]
			ontime3	8114.8672275543	Sum of GTIs [s]
			ontime6	8114.6620275378	Sum of GTIs [s]
			ontime7	8114.826187551	Sum of GTIs [s]
			l1events	954121	Number of level 1 events

### 2.1.4 Events

	ccd 0	ccd 1	ccd 2	ccd 3	ccd 6	ccd 7		ccd 0	ccd 1	ccd 2	ccd 3	ccd 6	ccd 7
level 1 events	169858	159320	170426	160907	159421	134189	grade 0 events	18230	17780	19159	18850	18902	9758
rejected events	134877	124183	134940	125737	122455	71362		10%	11%	11%	11%	11%	7%
rejected %	79%	77%	79%	78%	76%	53%	grade 1 events	107	81	115	100	82	95
								0%	0%	0%	0%	0%	0%
							grade 2 events	6974	7369	6905	6798	7514	15503
								4%	4%	4%	4%	4%	11%
							grade 3 events	2511	2473	2424	2441	2491	5499
								1%	1%	1%	1%	1%	4%
							grade 4 events	2394	2445	2456	2431	2437	5439
								1%	1%	1%	1%	1%	4%
							grade 5 events	3070	3111	2873	3409	3329	8067
								1%	1%	1%	2%	2%	6%
							grade 6 events	5621	5841	5352	5376	6413	28002
								3%	3%	3%	3%	4%	20%
							grade 7 events	130951	120220	131142	121502	118253	61826
								77%	75%	76%	75%	74%	46%

## 2.2 Compared Parameters

Parameter	Planned	Actual
Instrument	ACIS	ACIS
Detector	ACIS-012367	ACIS-012367
Grating	NONE	NONE
Data mode	FAINT	FAINT
Observation mode	SECONDARY	SECONDARY
[deg] Pointing RA	0	334.1302032467019
[deg] Pointing Dec	0	26.37202579232404
[deg] Pointing Roll	0.0	299.7450806277408
SIM focus pos (mm)	-1.4281808131	-1.4281808131
[mm] SIM defocus	0.1051557500557434	0.1051557500557434
SIM translation stage pos (mm)	250.4660330802	250.4660330802
[mm] SIM translation stage offset	-0.01005726120527584	-0.01005726120527584
[s] Observation start time (MET)	471789918.842827	471789918.842827
Observation start date	2012-12-13T12:45:19	2012-12-13T12:45:18
[s] Observation end time (MET)	471799977.684489	471799977.684489
Observation end date	2012-12-13T15:32:58	2012-12-13T15:32:57
Read mode	TIMED	TIMED

Parameter	Planned	Actual
Obspar format version number	7	7
Obspar file type	PREDICTED	ACTUAL
Obspar update status	OVERRIDE	OVERRIDE
Number of optional ACIS chips dropped	0	0
On-chip summing requested	N	N
Subarray requested	NONE	NONE
Alternating exposures requested	N	N
[s] Primary exposure time	3.2	3.2

## 2.3 Star Slots

## 2.4 FID Slots

## **A Summary**

### **A.1 Status**

V&V Scientist	Jen Lauer
V&V Date (YYYY-MM-DD)	2012.12.14
V&V Edition	1
V&V Disposition and Status	OK
V&V Charge Time	8.114826187551

### **A.2 Comments**