

V&V Reference Report

L2 ASCDS Version : 8.4.5

Observation 540 - L2 Version 4
Chandra X-Ray Center

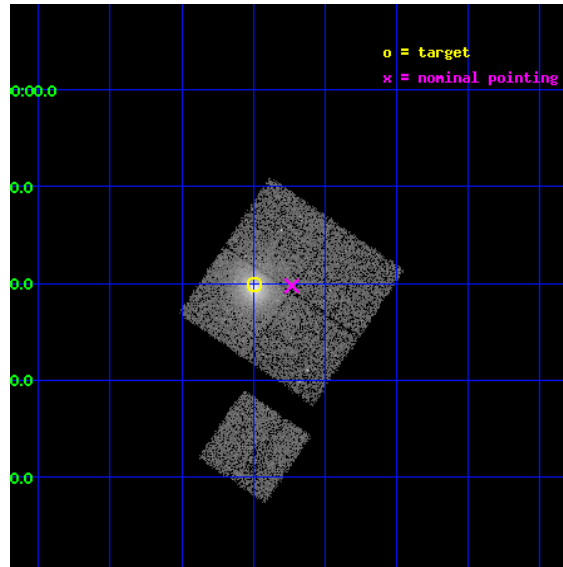
L2 Processing Date : Aug 25 2012

Contents

1	Front	2
2	OBI	3
2.1	OBI	3
2.1.1	Images	3
2.1.2	Bias	3
2.1.3	Parameters	4
2.1.4	Events	4
2.2	Compared Parameters	5
2.3	Aspect	6
2.4	Star Slots	9
2.4.1	Slot 3	9
2.4.2	Slot 4	10
2.4.3	Slot 5	11
2.4.4	Slot 6	12
2.4.5	Slot 7	13
2.5	FID Slots	14
2.5.1	Slot 0	14
2.5.2	Slot 1	15
2.5.3	Slot 2	16
A	Summary	17
A.1	Status	17
A.2	Comments	17

1 Front

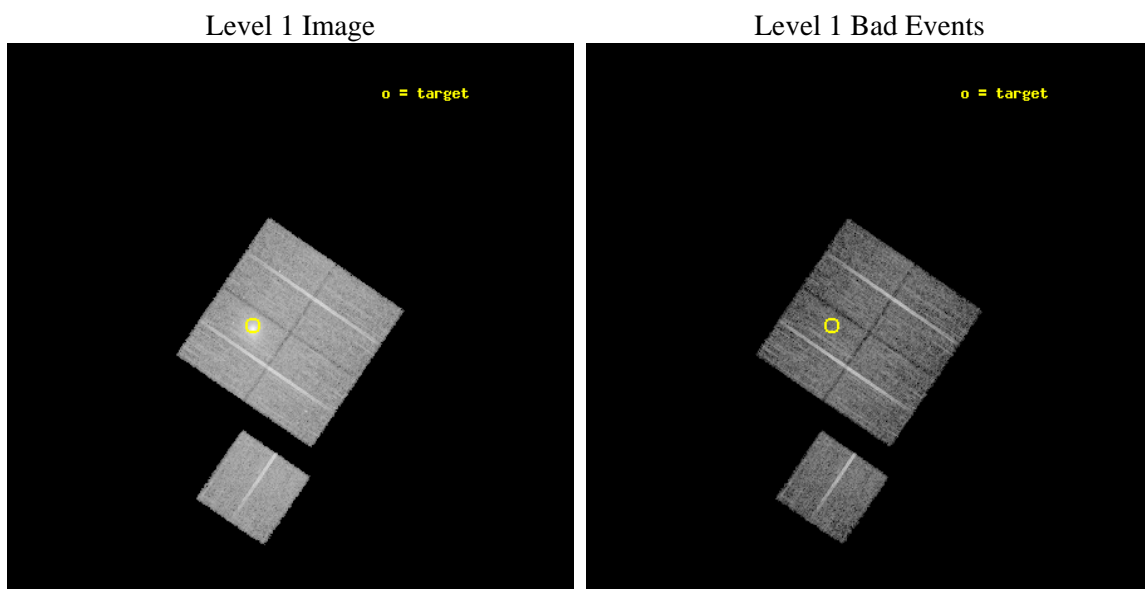
seq_num	800048	Sequence number
obs_id	540	Observation id
title	DETERMINATION OF H0/Q0	Proposal title
observer	DR. LEON VANSPEYBROECK	Principal investigator
object	A1689	Source name
dtcycle	0	
cycle	P	events from which exps? Prim/Second/Both
ra_targ	197.872917	Observer's specified target RA [deg]
dec_targ	-1.336	Observer's specified target Dec [deg]
ra_nom	197.8078352962	Nominal RA [deg]
dec_nom	-1.3374314107873	Nominal Dec [deg]
roll_nom	214.30203716285	Nominal Roll [deg]
revision	4	Processing version of data
ontime	10457.412287042	Sum of GTIs [s]
livetime	10324.994235965	Livetime [s]
ontime0	10457.289167047	Sum of GTIs [s]
ontime1	10457.330207035	Sum of GTIs [s]
ontime2	10450.889316559	Sum of GTIs [s]
ontime3	10457.412287042	Sum of GTIs [s]
ontime6	10457.248127043	Sum of GTIs [s]
l2events	62283	Number of level 2 events



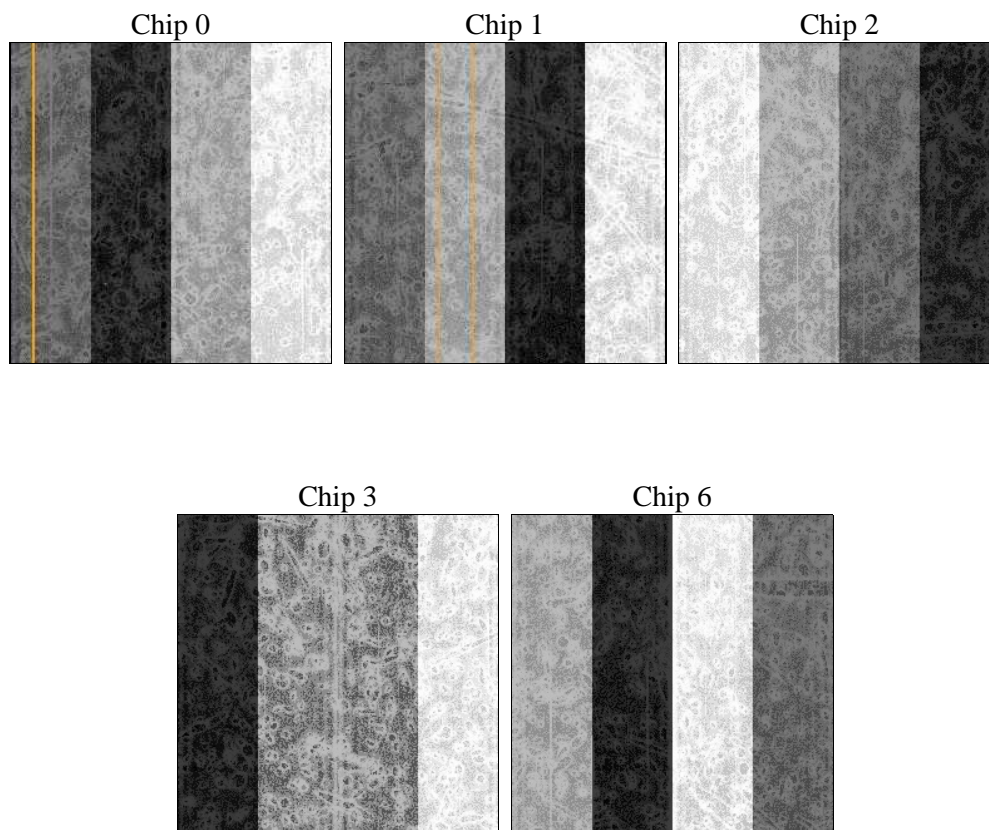
2 OBI

2.1 OBI

2.1.1 Images



2.1.2 Bias



2.1.3 Parameters

obi_num	0	Obi number	sched_exp_time	10150.000000	[s] Scheduled observation exposure time
ascdsver	8.4.5	Processing system revision	ontime	10457.412287042	Sum of GTIs [s]
caldsver	4.5.1.1	 	ontime0	10457.289167047	Sum of GTIs [s]
date	2012-08-25T15:41:50	Date and time of file creation	ontime1	10457.330207035	Sum of GTIs [s]
revision	4	Processing version of data	ontime2	10450.889316559	Sum of GTIs [s]
			ontime3	10457.412287042	Sum of GTIs [s]
			ontime6	10457.248127043	Sum of GTIs [s]
			l1events	399707	Number of level 1 events

2.1.4 Events

	ccd 0	ccd 1	ccd 2	ccd 3	ccd 6
level 1 events	70279	72406	79206	103013	74803
rejected events	61840	61943	70798	69235	66793
rejected %	87%	85%	89%	67%	89%

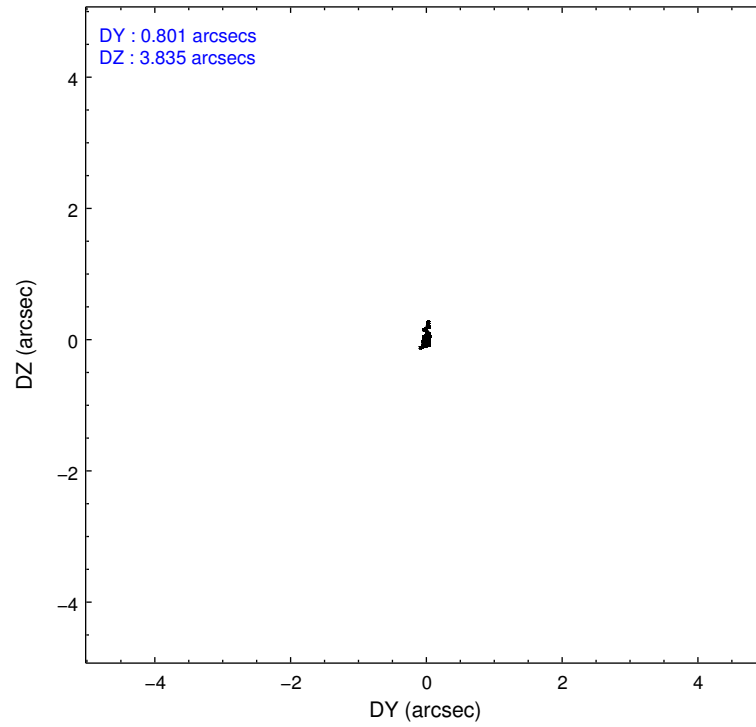
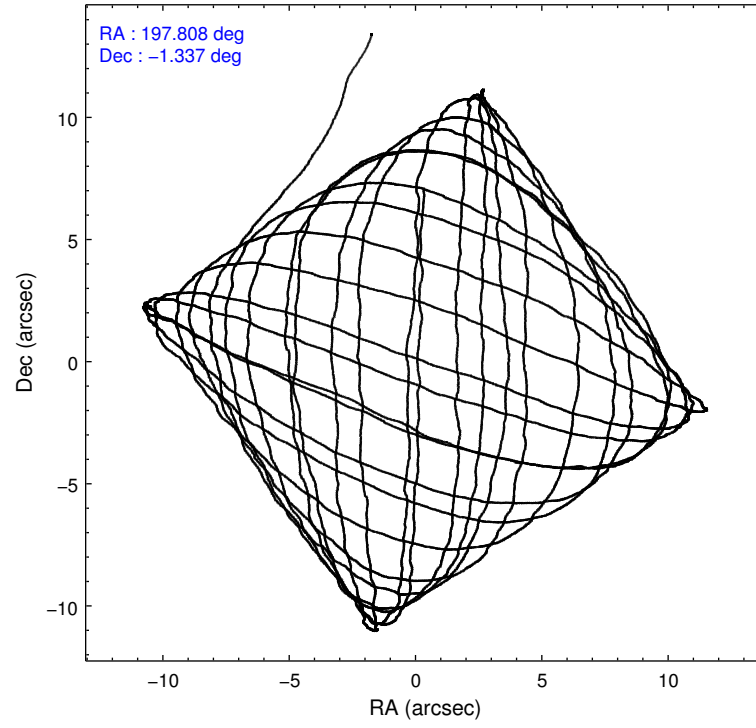
	ccd 0	ccd 1	ccd 2	ccd 3	ccd 6
grade 0 events	3835	5180	3753	24559	3375
	5%	7%	4%	23%	4%
grade 1 events	27	47	37	131	30
	0%	0%	0%	0%	0%
grade 2 events	1646	1780	1649	4029	1461
	2%	2%	2%	3%	1%
grade 3 events	812	979	818	1587	854
	1%	1%	1%	1%	1%
grade 4 events	798	938	843	1609	774
	1%	1%	1%	1%	1%
grade 5 events	2399	2533	2217	2643	2717
	3%	3%	2%	2%	3%
grade 6 events	1349	1590	1347	2006	1547
	1%	2%	1%	1%	2%
grade 7 events	59413	59359	68542	66449	64045
	84%	81%	86%	64%	85%

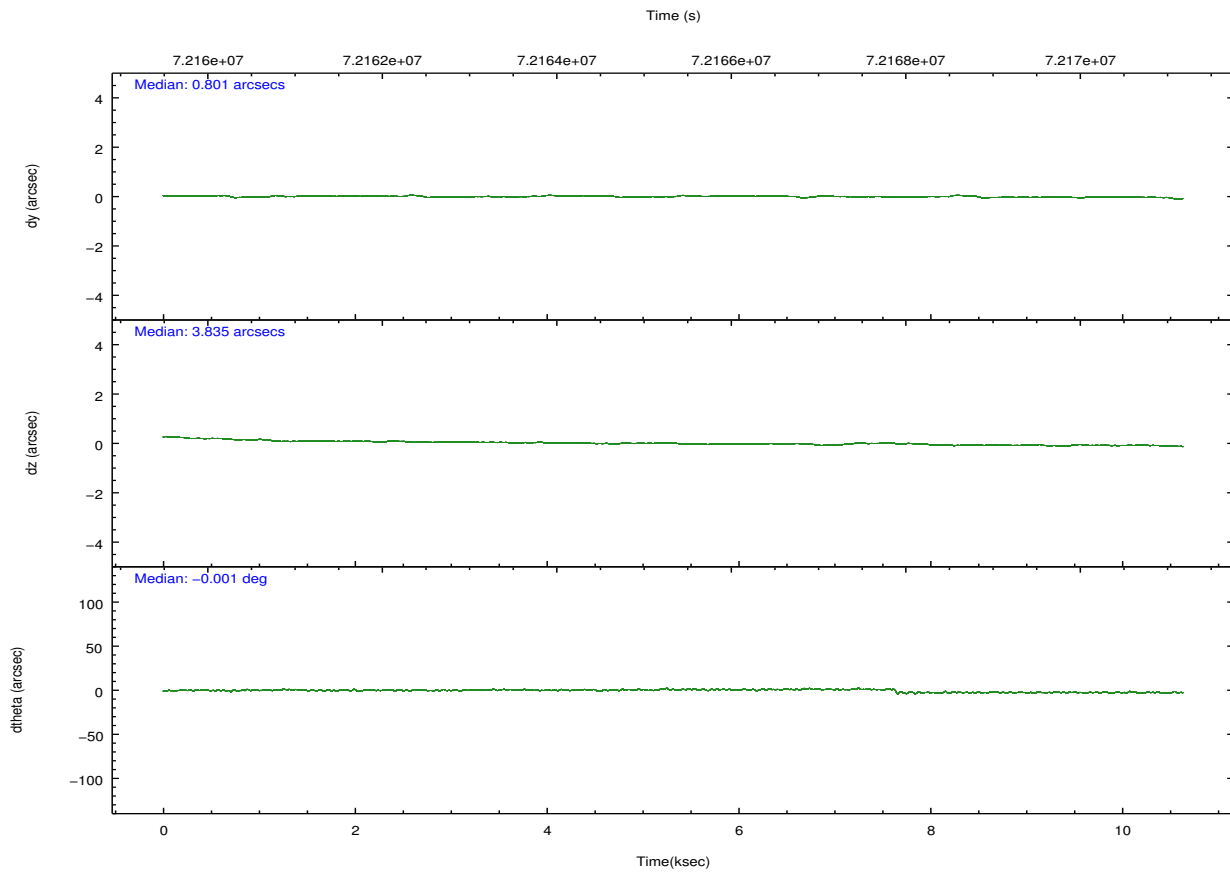
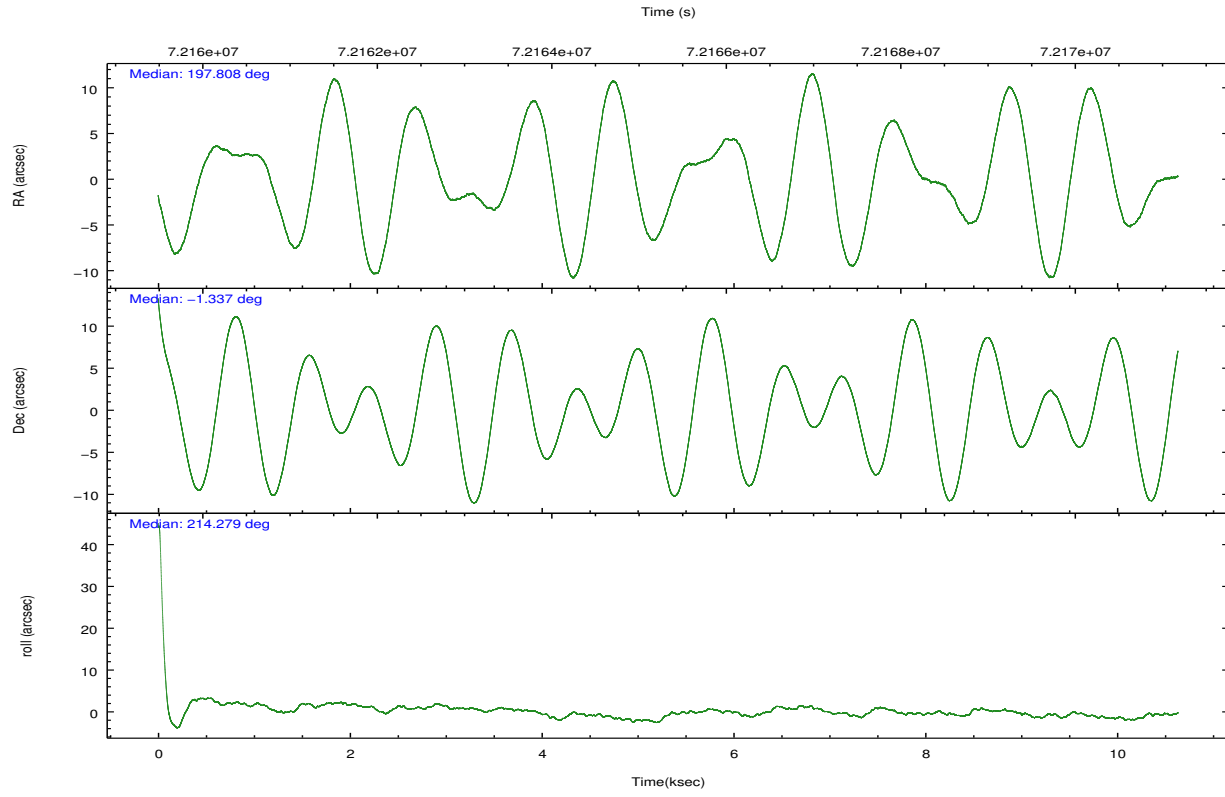
2.2 Compared Parameters

Parameter	Planned	Actual
Instrument	ACIS	ACIS
Detector	ACIS-01236	ACIS-01236
Grating	NONE	NONE
Data mode	FAINT	FAINT
Observation mode	POINTING	POINTING
[deg] Pointing RA	197.820043	197.8078352961988
[deg] Pointing Dec	-1.312616	-1.337431410787291
[deg] Pointing Roll	214.093571	214.3020371628537
[s] Window start time (MET)	63072064.184000	63072064.184000
[s] Window stop time (MET)	84153664.184000	84153664.184000
[mm] SIM focus pos	-0.782348	-0.7809083437167272
[mm] SIM defocus	0	0.001439871863259334
[mm] SIM translation stage pos	-236.532463	-236.5241547330508
[mm] SIM translation stage offset	2.94	2.931701730121091
[s] Observation start time (MET)	72160494.184000	72159276.733192
Observation start date	2000-04-15T04:33:50	2000-04-15T04:14:36
[s] Observation end time (MET)	72170644.184000	72171059.108624
Observation end date	2000-04-15T07:23:00	2000-04-15T07:30:59
Read mode	TIMED	TIMED

Parameter	Planned	Actual
Obspar format version number	7	7
Obspar file type	PREDICTED	ACTUAL
Obspar update status	NONE	UPDATED
Number of optional ACIS chips dropped	0	0
On-chip summing requested	N	N
Subarray requested	NONE	NONE
Alternating exposures requested	N	N
[s] Primary exposure time	0.000000	3.2

2.3 Aspect



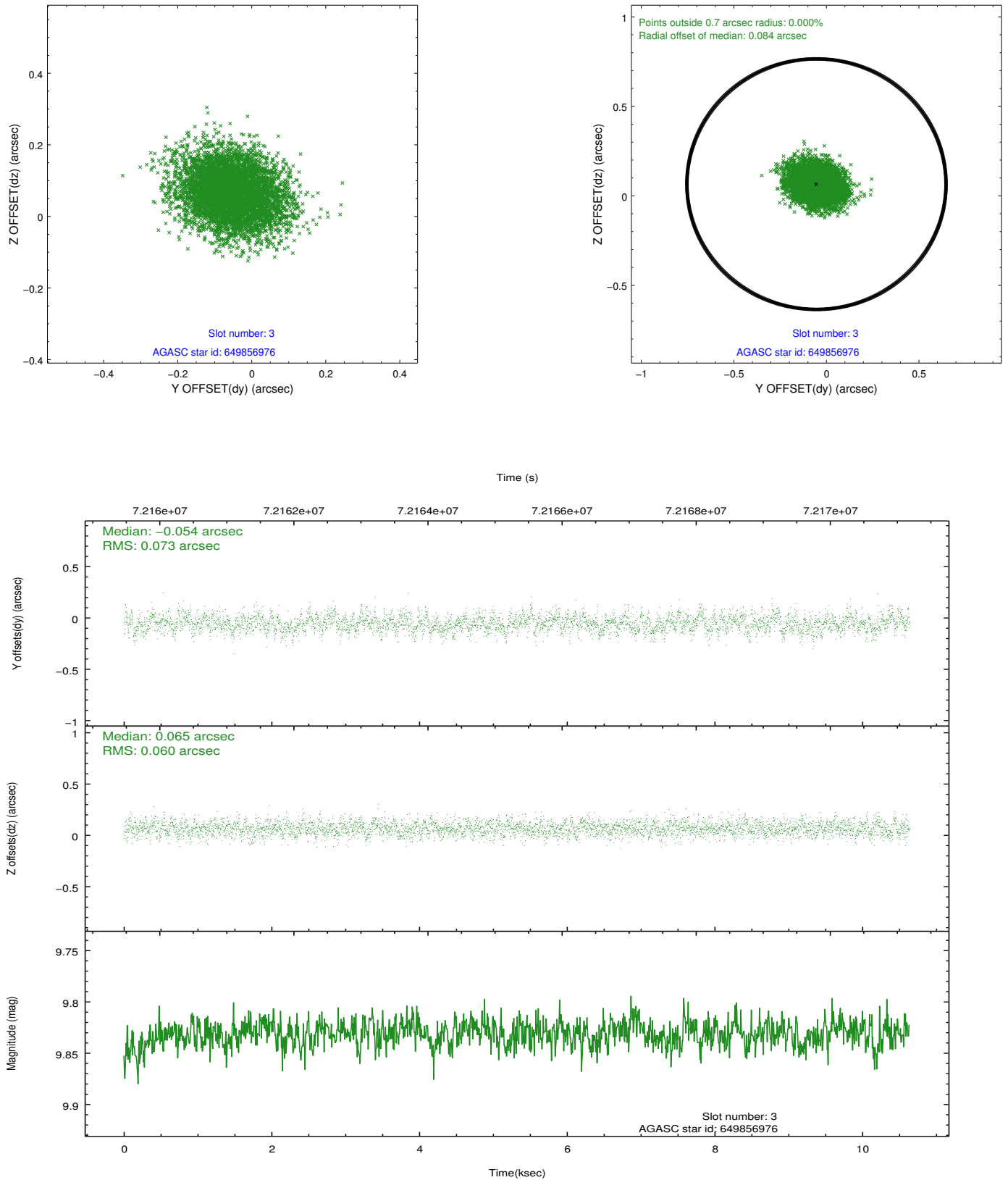


Slot Statistics

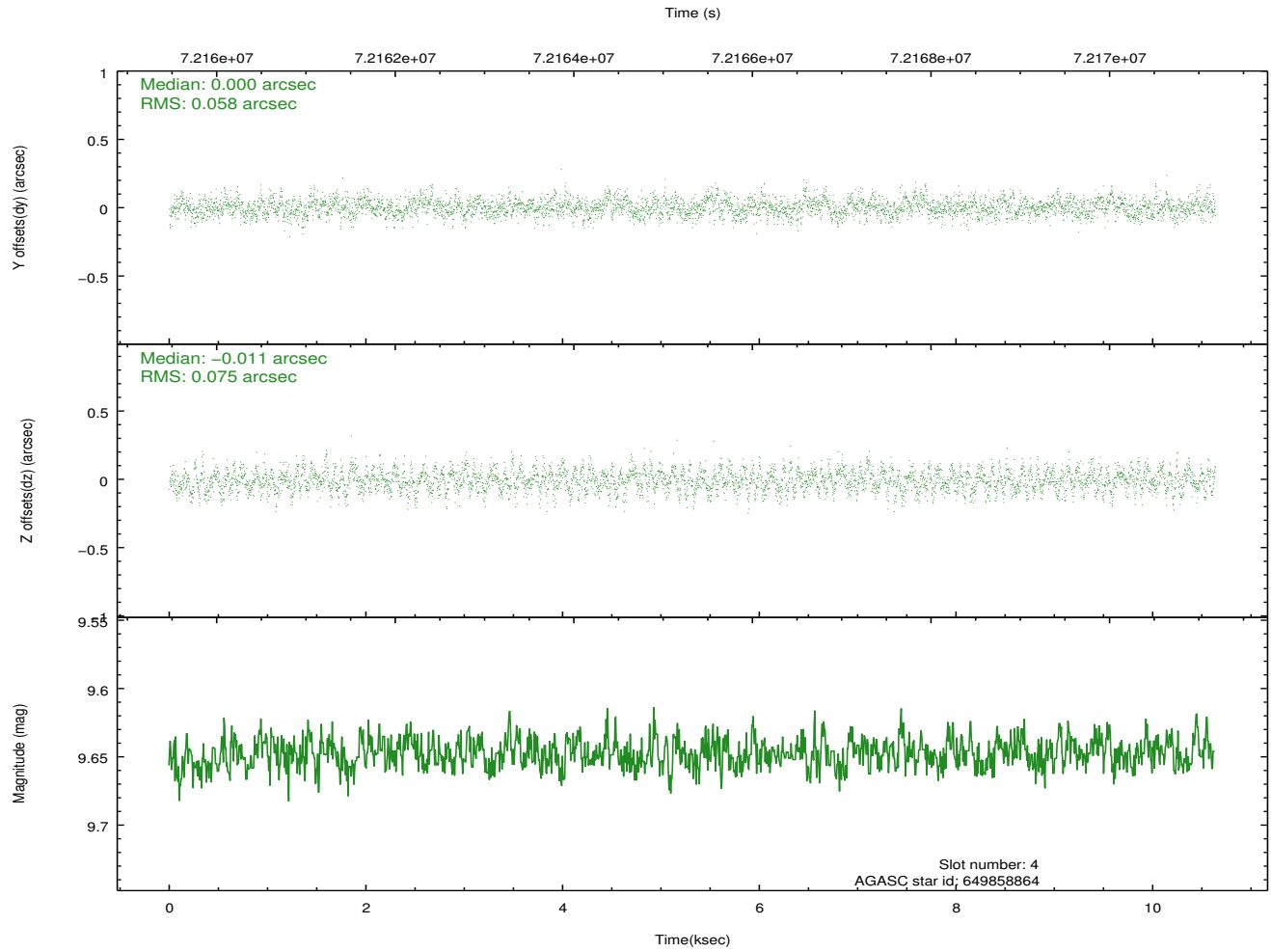
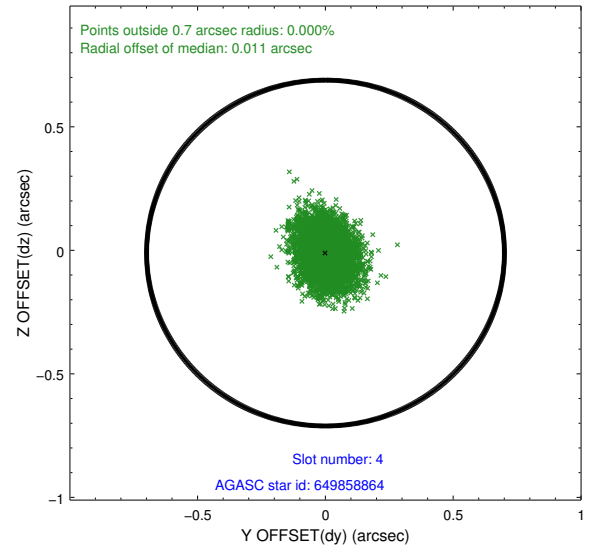
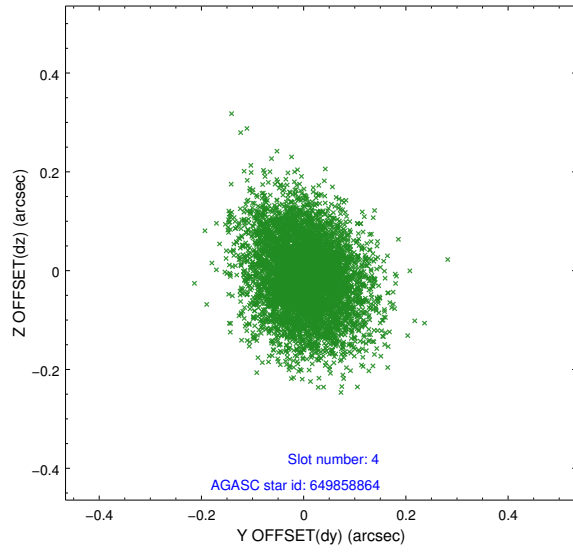
slot	status	id	mag	n_pts	med_dy	med_dz	dr1	dr2	ra	dec	mean_y	mean_z
0	FID	ACIS-I-2	7.15	2594	-0.022	-0.031	0.013	0.024	0.000000	0.000000	-754.94	-773.61
1	FID	ACIS-I-4	7.22	2594	0.005	0.029	0.008	0.014	0.000000	0.000000	2158.96	1132.39
2	FID	ACIS-I-5	7.23	2594	-0.084	0.071	0.012	0.020	0.000000	0.000000	-1808.32	1131.26
3	GUIDE	649856976	9.83	5180	-0.054	0.065	0.100	0.167	197.988518	-1.476151	-171.56	827.99
4	GUIDE	649858864	9.65	5181	0.000	-0.011	0.102	0.165	197.684428	-0.695156	-840.04	-2114.10
5	GUIDE	649729680	9.68	5181	0.129	0.043	0.099	0.162	197.477731	-1.403690	1205.07	-418.31
6	GUIDE	649857296	10.06	5188	-0.057	0.010	0.122	0.198	198.284356	-1.527390	-949.82	1577.19
7	GUIDE	649726472	10.37	5182	-0.024	-0.109	0.141	0.238	197.403429	-1.852261	2330.85	770.36

2.4 Star Slots

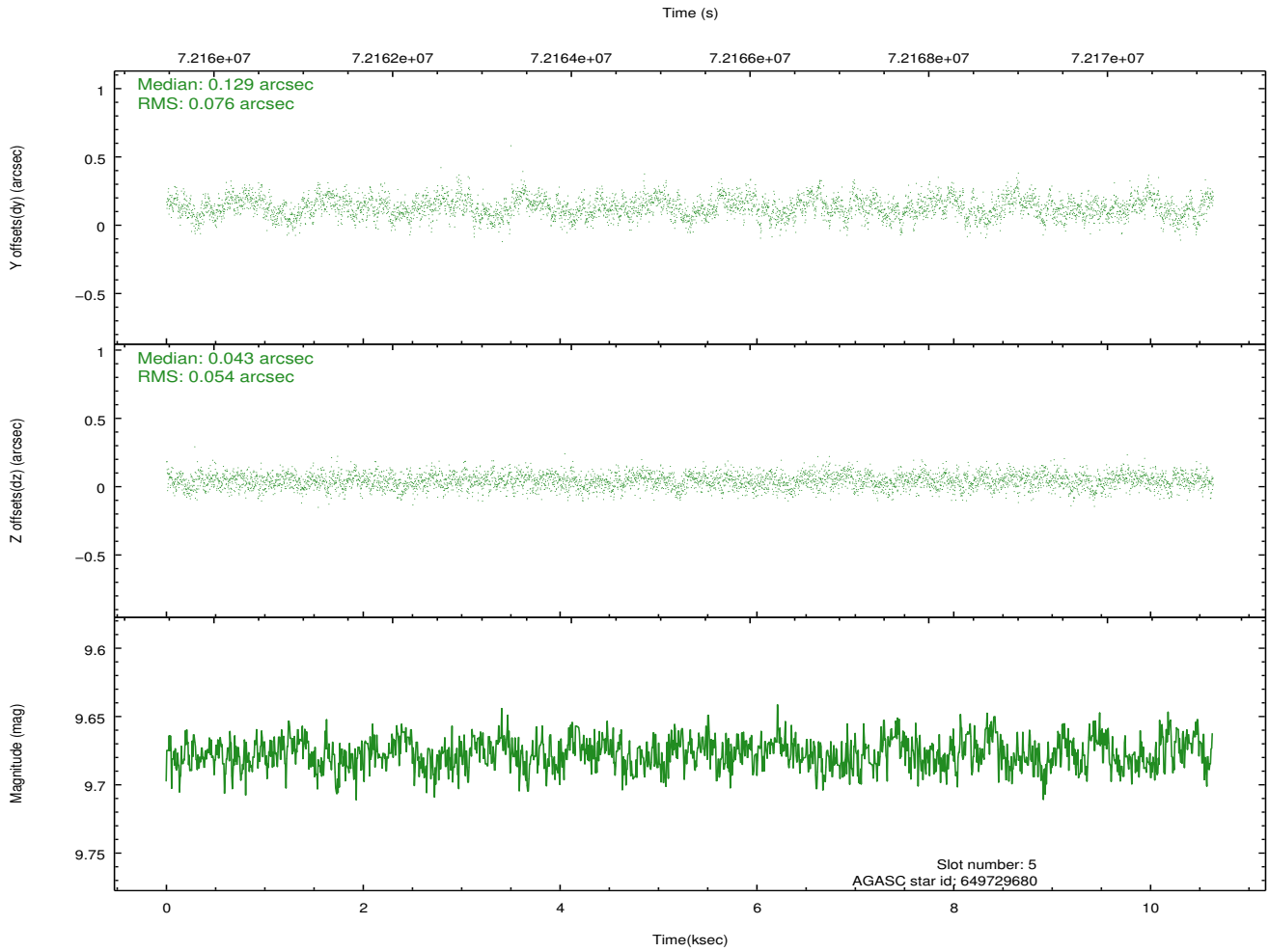
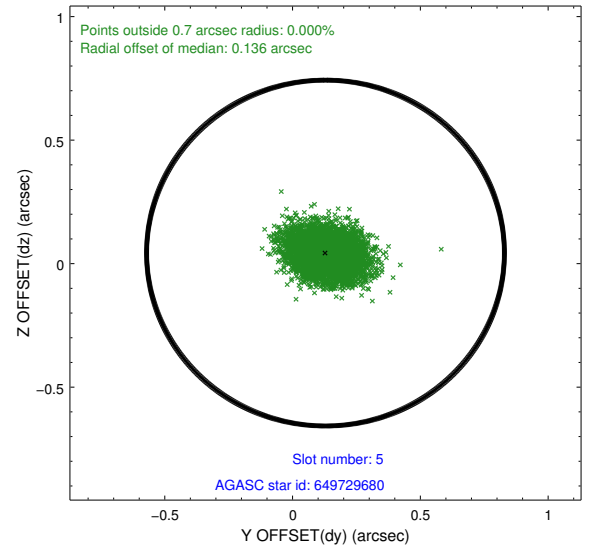
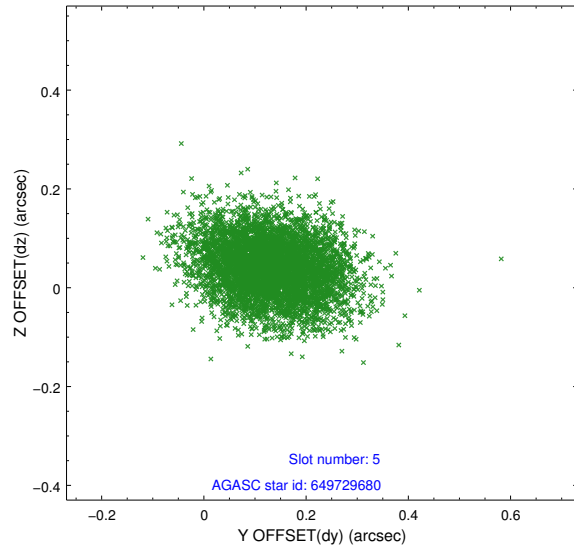
2.4.1 Slot 3



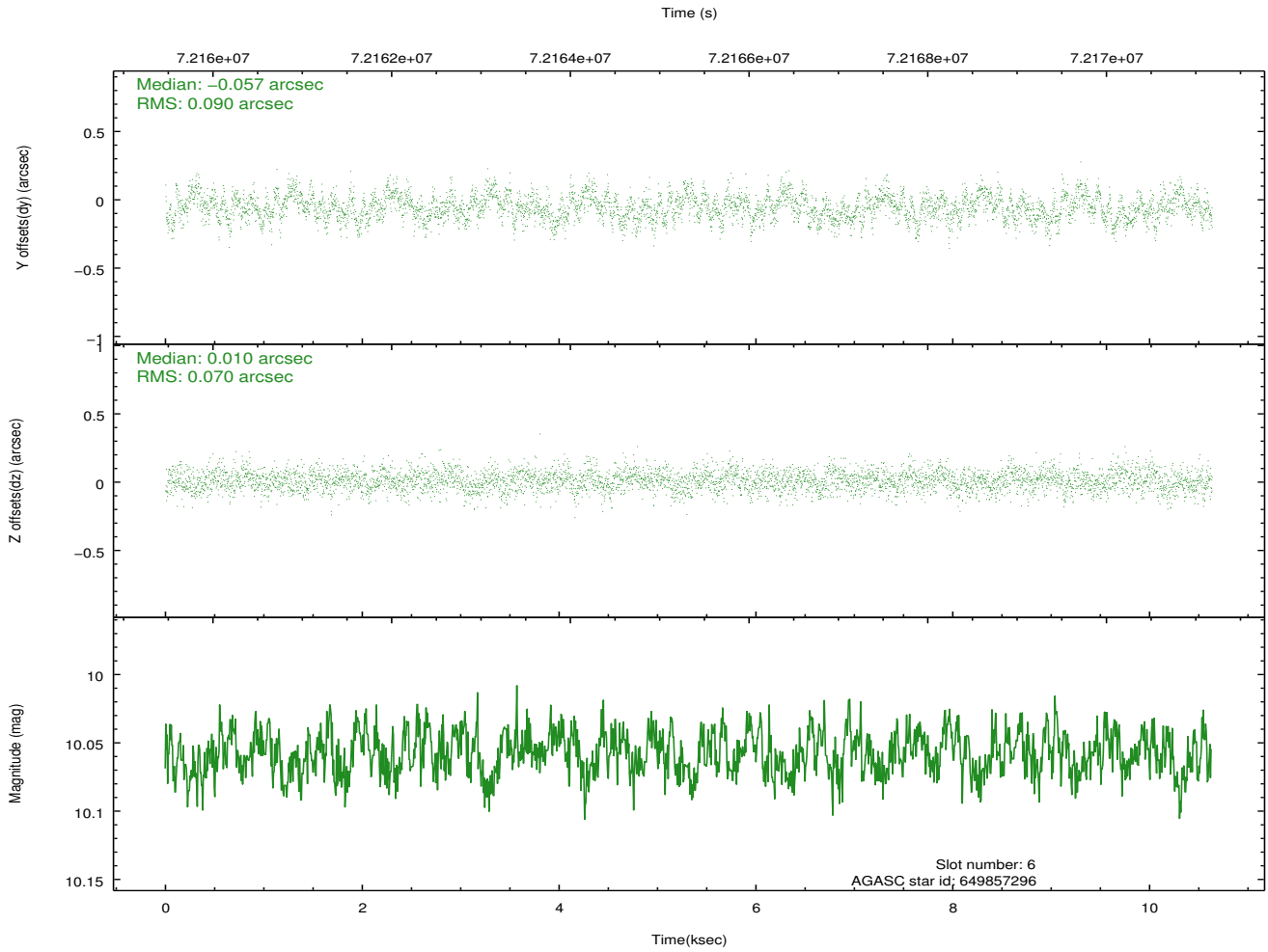
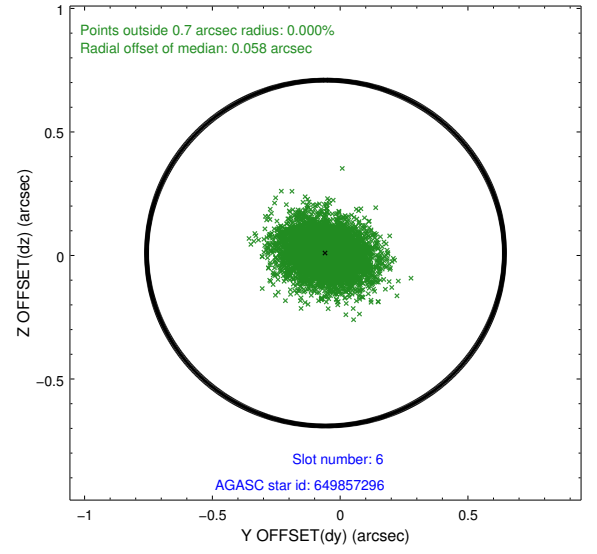
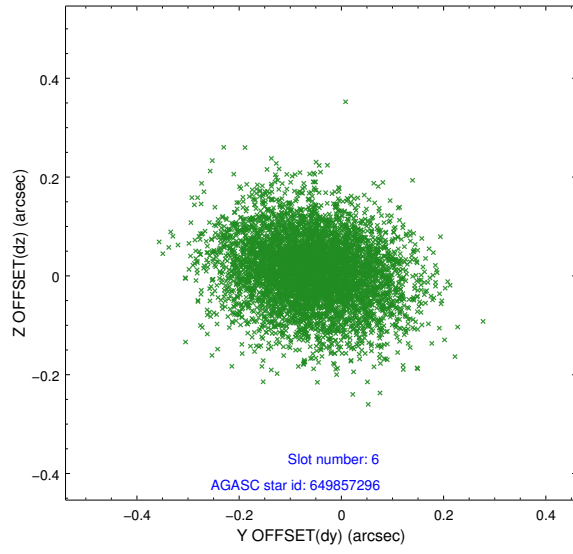
2.4.2 Slot 4



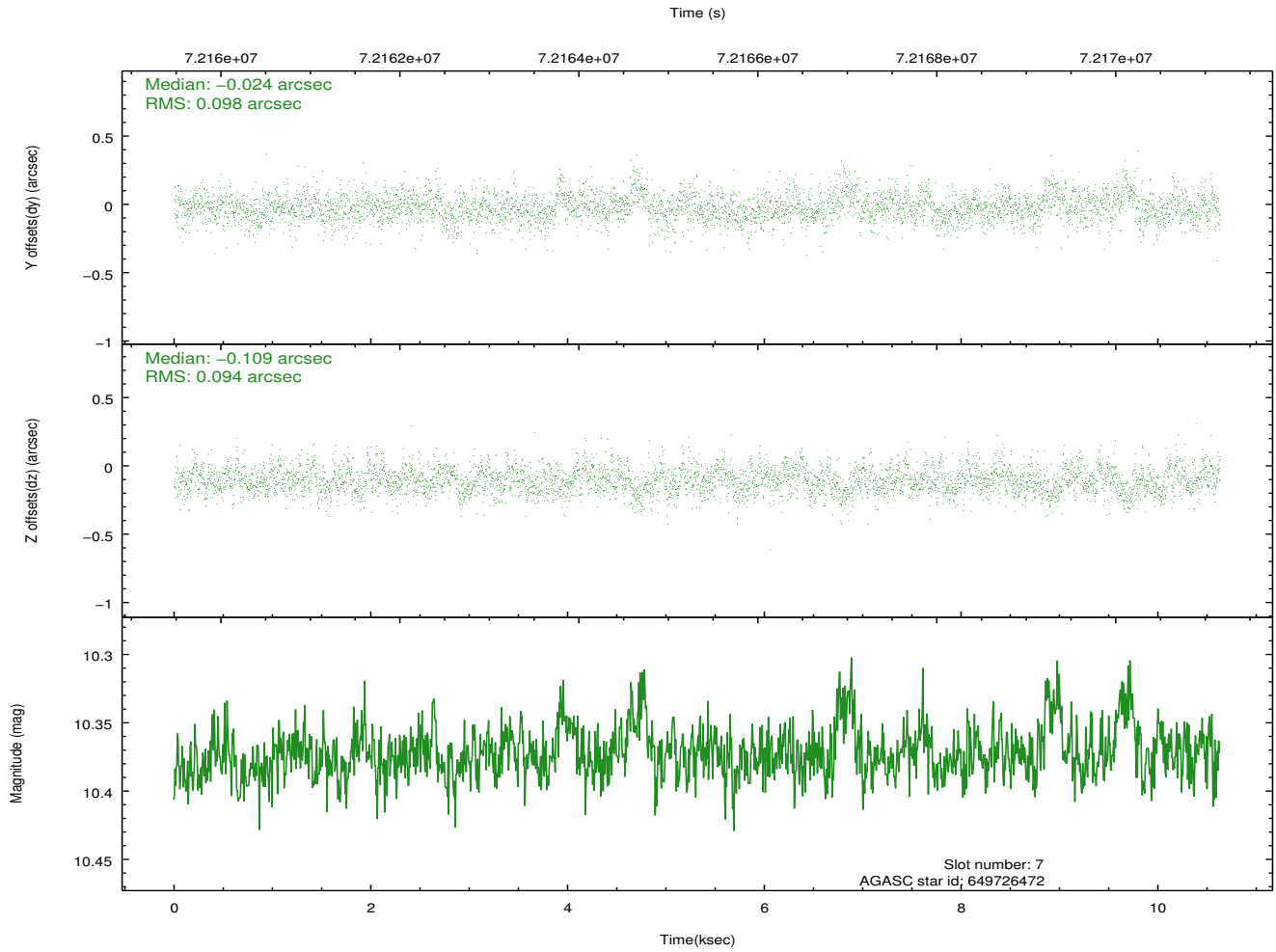
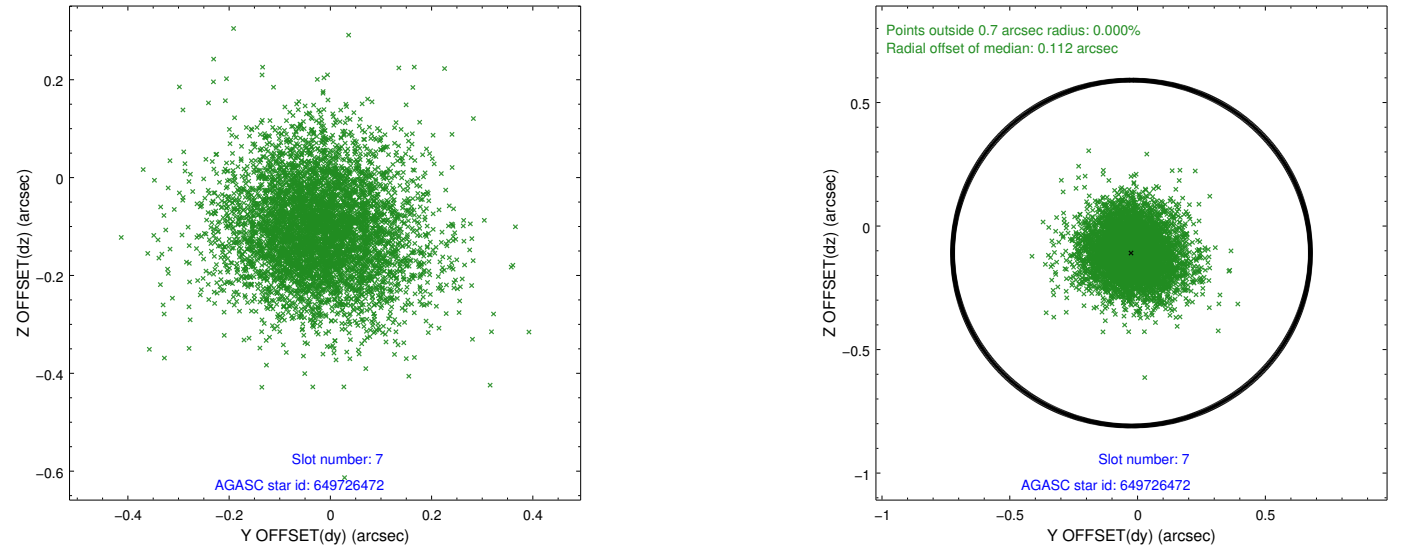
2.4.3 Slot 5



2.4.4 Slot 6

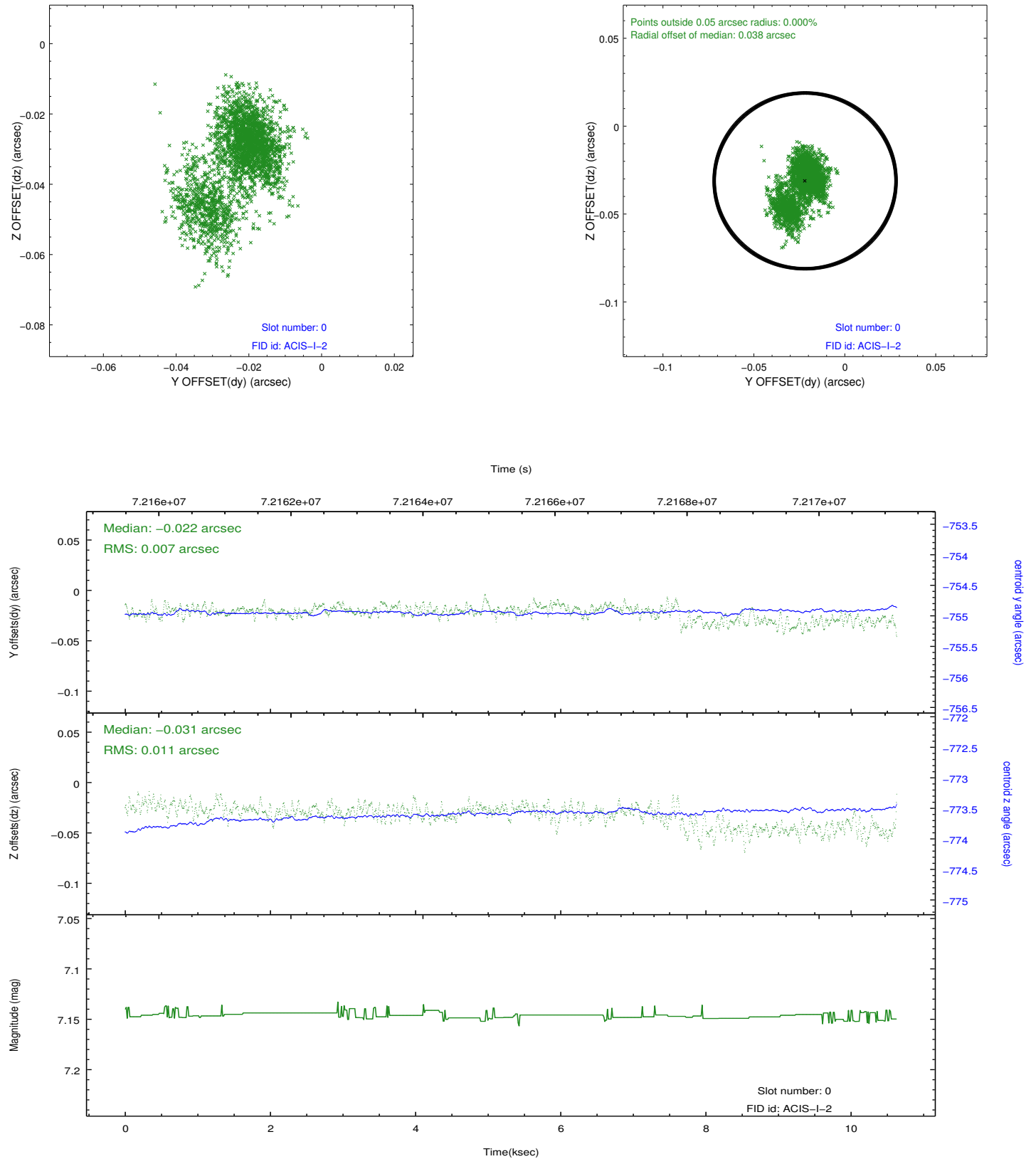


2.4.5 Slot 7

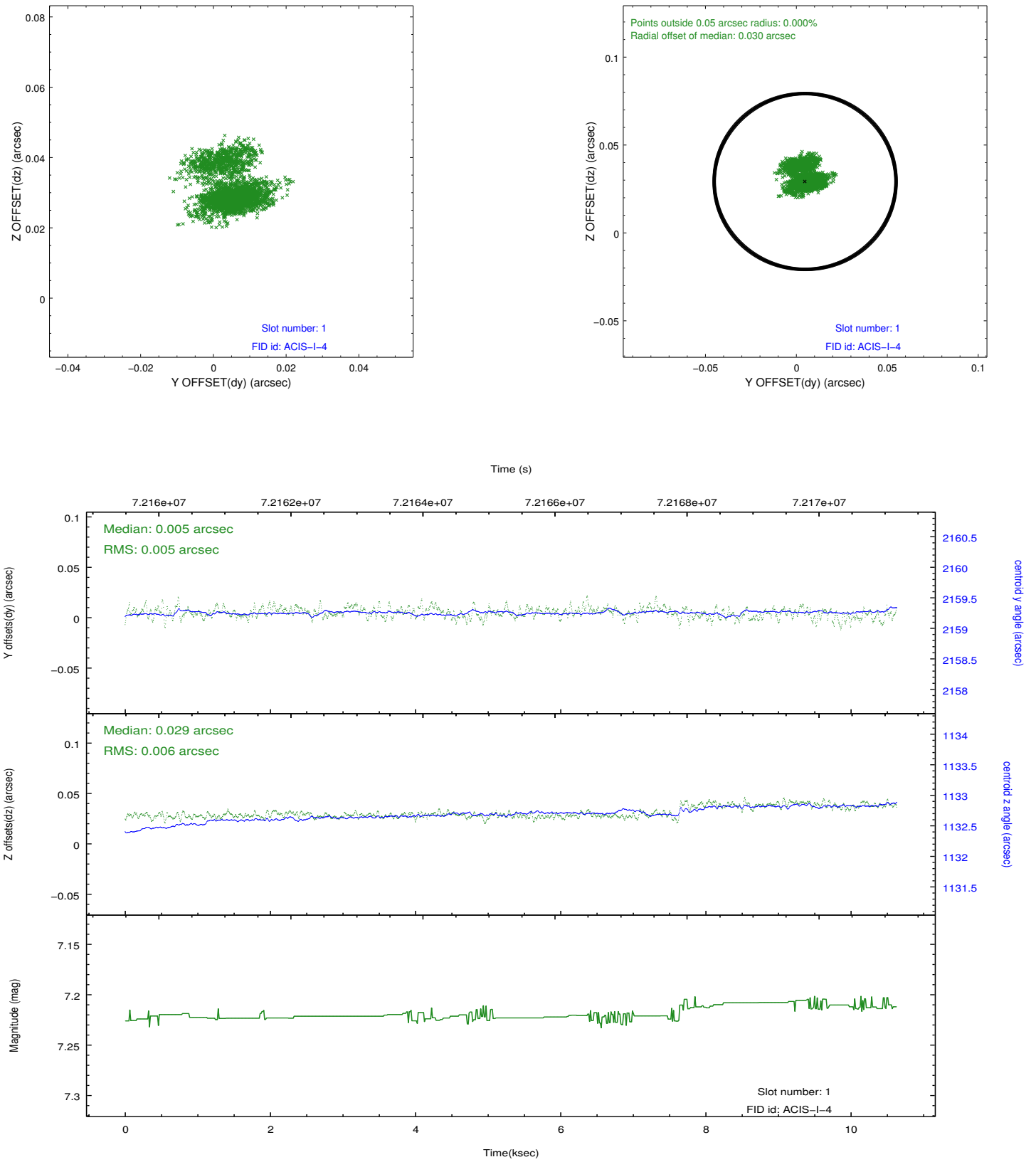


2.5 FID Slots

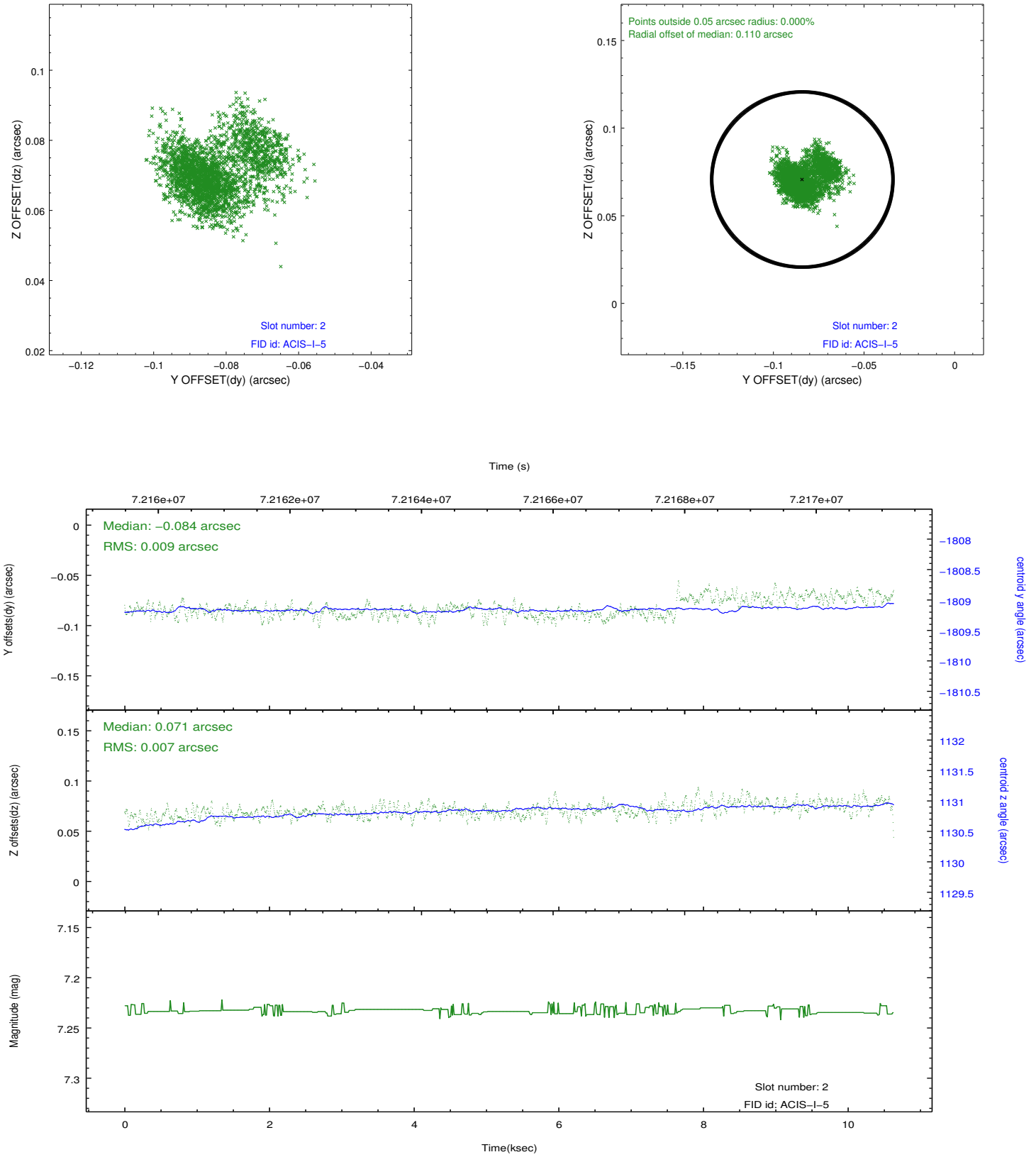
2.5.1 Slot 0



2.5.2 Slot 1



2.5.3 Slot 2



A Summary

A.1 Status

V&V Scientist	Jen Lauer
V&V Date (YYYY-MM-DD)	2012.08.28
V&V Edition	1
V&V Disposition and Status	OK
V&V Charge Time	10.451

A.2 Comments

Window constraint met.